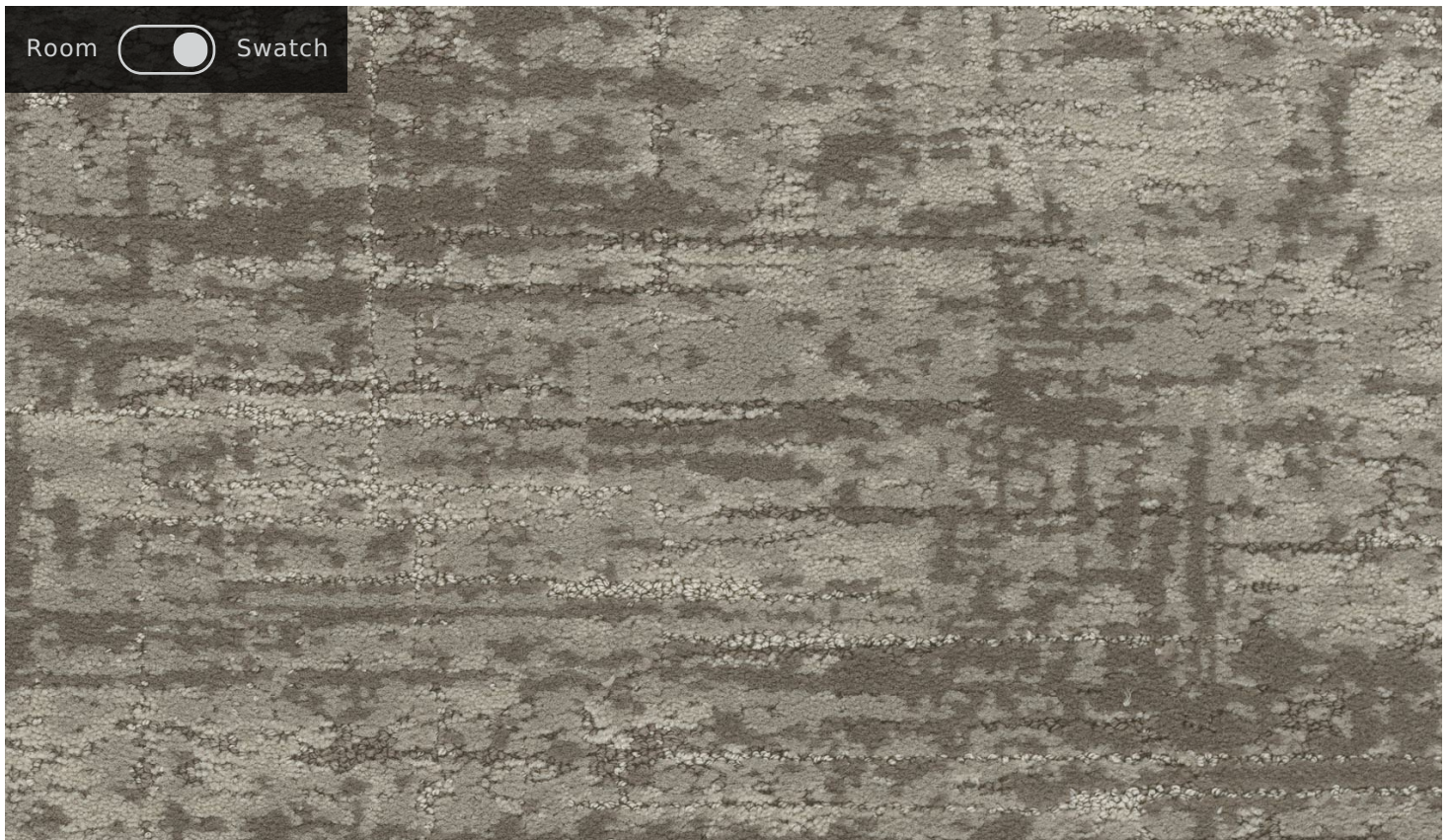


Aperture II

9770

Also available in: **Modular 24" x 24"**

ADD SAMPLE



Rooms

Downloads

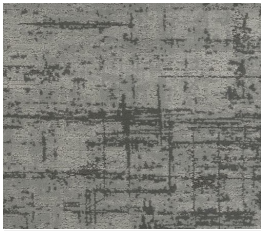




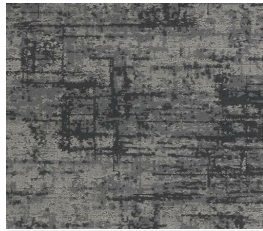
Warm
Toned
2255



Diffuse
2258



Haze Grey
2261



Neutral
Density
2262

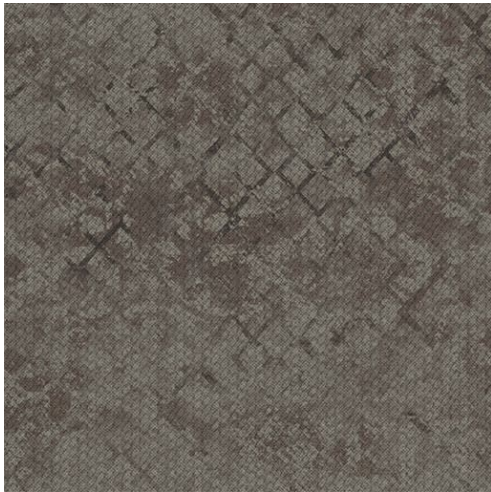


Grayscale
2265



N
3

coordinating products



BROOKSTONE 1846
Plank 18" x 36"
Courtyard 2922
KINETEX



TWILL WEAVE 7586
Modular 24" x 24"
Mills 2874
CARPET



**AGAINST THE GRAIN
DEMI-PLANK 18**
Plank 12" x 48"
Millet 2825
KINETEX

PRODUCT DETAILS

[VIEW](#)

PRODUCT SPECS

ENVIRONMENTAL

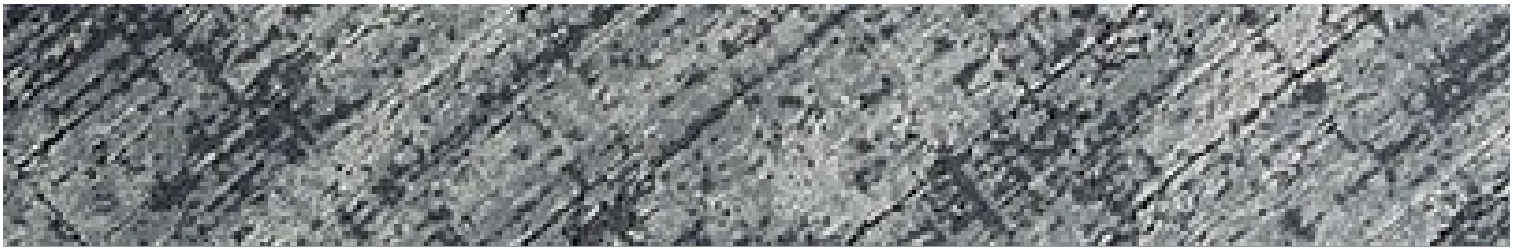
TESTING

WARRANTIES

SPEC TOOL

PRODUCT GALLERY





aperture ii

PRODUCT BROCHURE





aperture ii brochure

Product specifications are based on averages derived from the manufacturing processes and within normal industry tolerances. Components may be changed without notice due to raw material shortages and/or technological advances. Such variances are typical to a manufacturing process and may impact performance.

CONTACT NEWS REP LOCATOR				Q
PRODUCTS	TECHNICAL	SEGMENTS	COMPANY	SUSTAINABILITY
All Products	Warranties	Corporate	Careers	Overview
Broadloom	Installation & Maintenance	Education	About Us	Certifications
Modular	Adhesives	Healthcare	Contact	Transparency
Kinetex	Technologies	Senior Living	Customer Programs	R4 Sample Request
LVT	Backings	Retail	News	Flooring Reclamation
Rugs	Fiber	Public Space	Accolades	
Walk-Off	Moisture	Civic		
Quick Ship	White Papers	Hospitality		
Inventory	Technical Briefs			
Designer Palettes	Cost Calculator			
GSA				
USAF				