

Propel II Demi-Plank

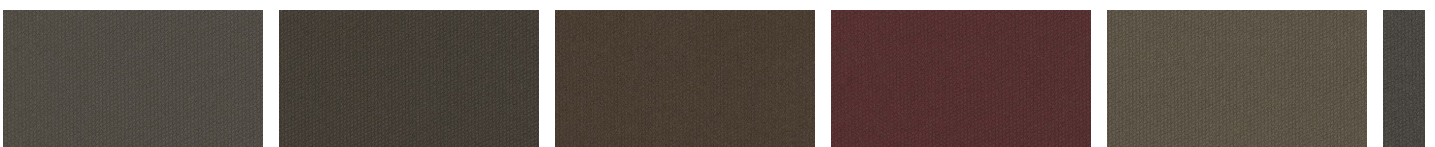
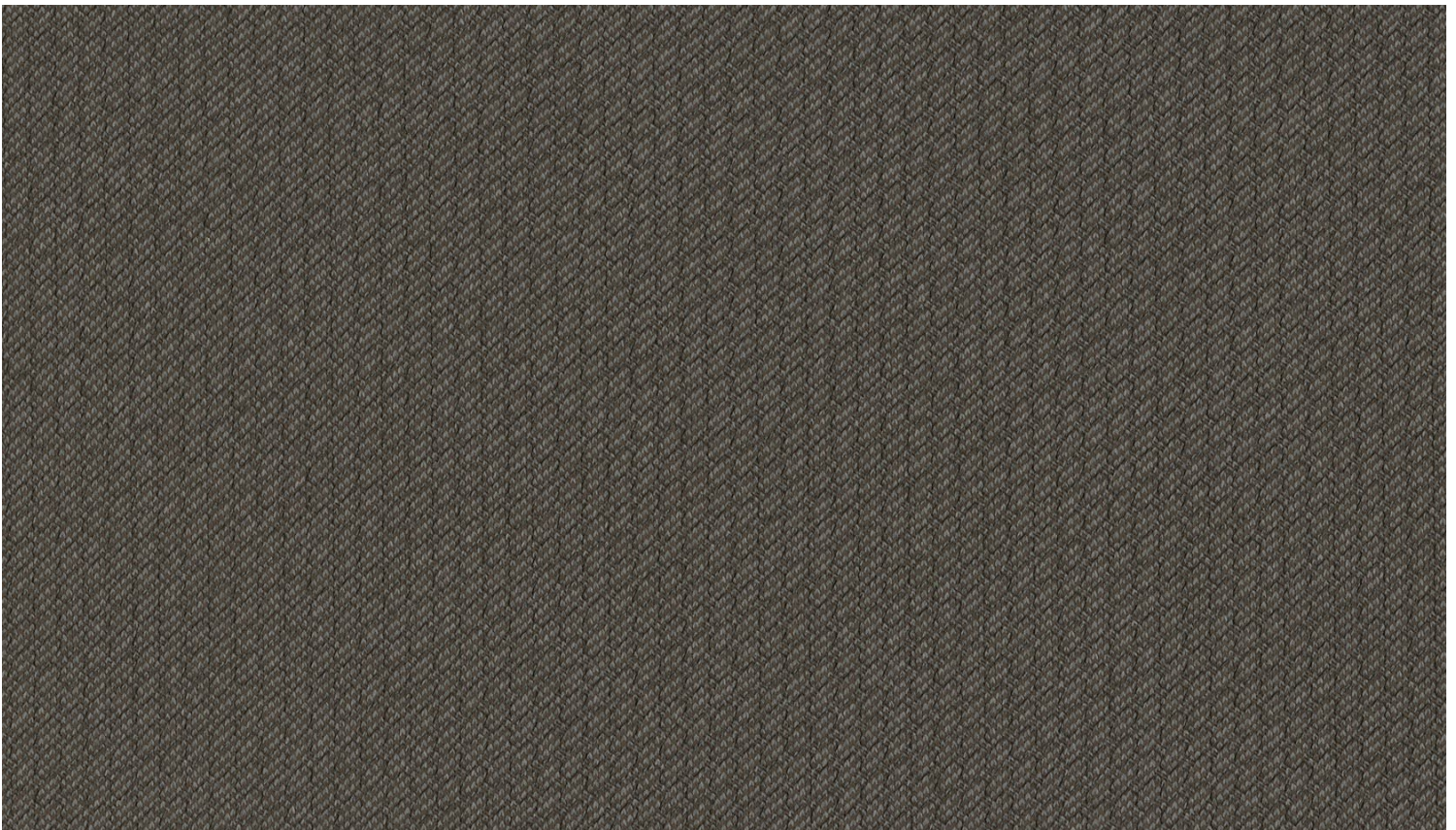
1817

What is Kinetex?

Also available in: **Plank 18" x 36"**, **Modular 24" x 24"**

ADD SAMPLE

Plank dimensions (12"x 48" or 18" x 36") for this Kinetex style are not intended for installation and are limited to accents only. (This product is only sampled in 24"x 24" modules)





Guide
1702

Roll
1703

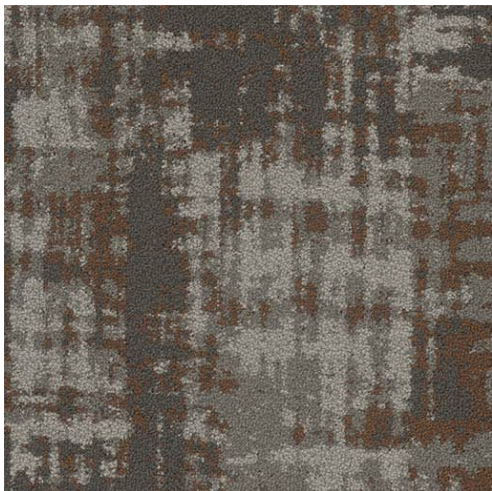
Shunt
1704

Nudge
1705

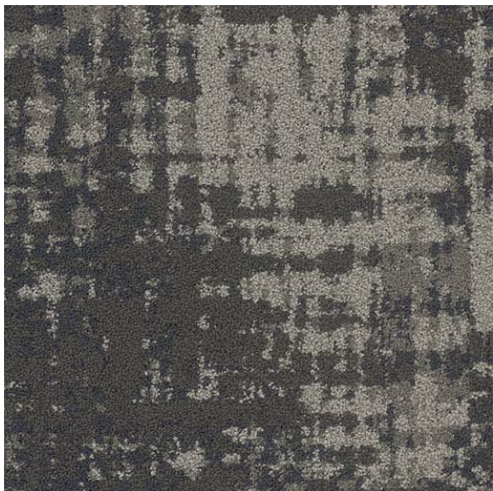
Forge
1706

A
1

coordinating products



TABBY 7802
Plank 18" x 36"
Claystone 3624
CARPET



TABBY 7802
Plank 18" x 36"
Twilight 3626
CARPET



REED 7800
Plank 18" x 36"
Claystone 3624
CARPET

PRODUCT DETAILS

Propel II is a solid, sophisticated tweed-like visual is achieved with moresque colored

VIEW

PRODUCT SPECS

ENVIRONMENTAL

TESTING

PACKAGING

WARRANTIES

SPEC TOOL

PRODUCT GALLERY





counterbalance collection

PRODUCT BROCHURE





propel ii brochure

Product specifications are based on averages derived from the manufacturing processes and are within normal industry tolerances. Components may be changed without notice due to raw material shortages and/or technological advances. Such variances are typical to a manufacturing process and may impact performance.

[CONTACT](#) | [NEWS](#) | [REP LOCATOR](#)



PRODUCTS	TECHNICAL	SEGMENTS	COMPANY	SUSTAINABILITY
All Products	Warranties	Corporate	Careers	Overview
Broadloom	Installation & Maintenance	Education	About Us	Certifications
Modular	Adhesives	Healthcare	Contact	Transparency
Kinetex	Technologies	Senior Living	Customer Programs	R4 Sample Request
LVT	Backings	Retail	News	Flooring Recalls
Rugs	Fiber	Public Space	Accolades	
Walk-Off	Moisture	Civic		
Quick Ship	White Papers	Hospitality		
Inventory	Technical Briefs			
Designer Palettes	Cost Calculator			
GSA				
USAF				

