

RELATIVITY



J+J FLOORING GROUP

From our establishment in 1957, we have become one of the oldest exclusive manufacturers of *commercial flooring* in the United States. As one of the largest privately held mills, our FAMILY-OWNERSHIP provides a *heritage* of proven performance and expansive industry knowledge. Most importantly, our focus has always been on *people*... ensuring them that our products deliver the highest levels of BEAUTY, PERFORMANCE and DEPENDABILITY.

INVISION kinetex LVT

[cover] Relativity Cosmos, brick.
[right] Relativity Connection, quarter turn.





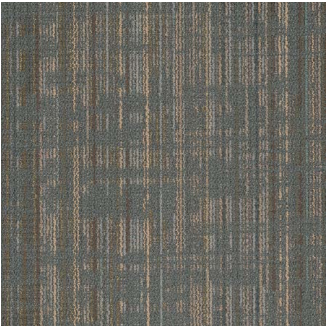
relativity 7059



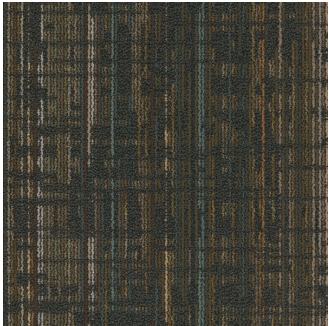
style 7059
2218
connection



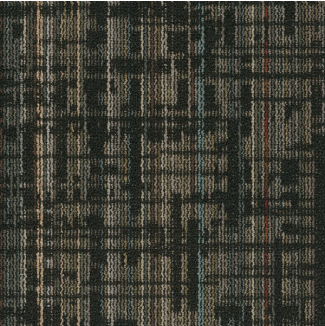
style 7059
2219
expansion



style 7059
2220
zoom



style 7059
2221
magnetic



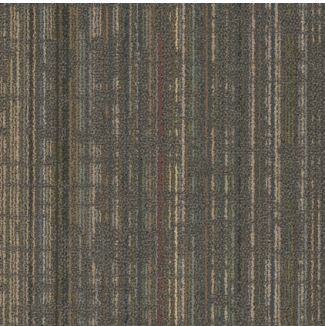
style 7059
2222
cosmos



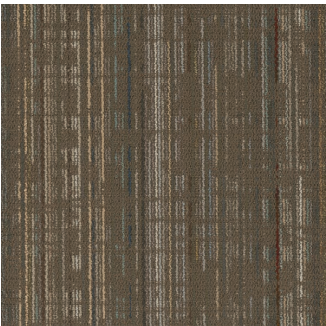
style 7059
2223
uniformity



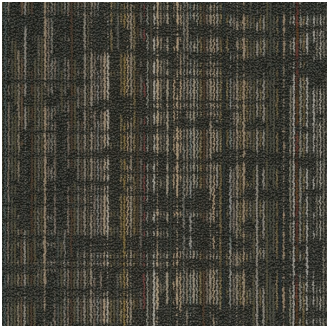
style 7059
2224
lightspeed



style 7059
2225
in motion



style 7059
2226
interval



style 7059
2227
gravity



style 7059
2228
free fall

product details

FIBER

Encore® RE Nylon with recycled content
Encore RE nylon is a beautiful blend of various colors and dye levels. Combining first quality yarns, we are able to maximize potential usage of materials.

Since no two tiles feature the same Encore® RE yarns, dye lot merges are obsolete. The multitude of yarn colors allow the tiles from one production run to easily merge with tiles from another production run. The inherent colorway flexibility allows for easy modular replacement and thus no need for matching dye lots.

BACKINGS

Nexus® Modular
Nexus modular products can be installed in a variety of ways and are performance engineered to be visually appealing. In addition, they are designed to accommodate your long-term flooring budget.

- Manufactured in an ISO 14001 certified facility
- Contains pre-consumer recycled content and contributes to LEED
- Recyclable through the J+J Flooring Group's R4 Carpet Reclamation Program

OPTIONAL:
Nexus® Cushion

ADHESIVES

Commercialon® Premium Modular Adhesive
A high strength acrylic latex-based carpet adhesive specifically formulated for bonding modular PVC backed carpet to the floor. This premium adhesive is for use with all Invision Nexus Modular Tile products. This adhesive is guaranteed for the life of the installation when used in accordance with the J+J Flooring Group Carpet Installation Handbook. Commercialon Premium Modular Adhesive meets the CRI Low-VOC Emission Criteria, CRI ID# PSA-425402. Commercialon Premium Modular Adhesive is non toxic, has ultra-low odor and is antimicrobial in the dry state.

OPTIONAL:
TileTabs - High Tack Adhesive Tabs (modular only)

TECHNOLOGIES

ProTex® Soil Release
ProTex is a proprietary fluorochemical technology that is applied and bonded to the pile fiber to impede soiling and to improve cleanability. It is standard on all J+J Flooring Group products.

OPTIONAL:
ProSept® Antimicrobial
Sentir® Advanced Odor-Blocking Technology

corporate programs



Green Circle - Zero Waste to Landfill Operations Certification
We are proudly certified as a Zero Waste to Landfill manufacturer by GreenCircle Certified, LLC., a prominent third-party certifier of environmental claims. We are the first commercial flooring manufacturer in the United States to achieve this landfill free status and the first company in the industry to have its waste diversion efforts audited and verified by a recognized, third-party certifier.

To learn more about zero waste or our other initiatives see our sustainability progress report online at jjflooringgroup.com/sustainability



We're on it.
The J+J Flooring Group Premium Customer Experience.

Our Premium Customer Experience is a carefully crafted process by which we guarantee that our customers will get the products, services and the reliability they expect from us.

To learn more visit jjflooringgroup.com/about/cx

©2017 J&J Flooring Group, LLC - This unique design is protected under the U.S. Copyright Act of 1976. Any unauthorized copying or duplication of this design constitutes copyright infringement in violation of federal law.

Due to the unique visual characteristics of modular carpets, pattern repeats and pattern run-off seams may appear more noticeable than in broadloom carpets. Such visual characteristics do not constitute a manufacturing defect, and as such, should be considered when selecting moduar carpet and its installation.

These photographs are representations of the installation for this modular product. Your modular installation may look different than these photos depending upon individual tile placement, lighting, and overall space layout, including furnishings. Final tile placement and the resulting visual is thus the customer's, and not J+J Flooring Group's responsibility.

style	relativity 7059 modular
construction	textured loop
fiber type	100% Encore® RE nylon
dye method	solution / yarn dyed
ounce weight	19 oz/sy (644 grams/m²)
gauge	1/12 (4.72 rows/cm)
backing	Nexus® modular
size	24" x 24" (61 cm x 61 cm)
pattern repeat	n/a
total thickness (nominal average)	.25 inches (0.635 cm)
special technology	ProTex® fluorochemical
optional special technologies	ProSept® antimicrobial Sentir® advanced odor blocking treatment
physical testing	flooring radiant panel (class 1) pill test – (passes) smoke density (less than 450 flaming) static generation -(less than 3.5 kv) ADA compliance (compliant for accessible routes)
warranties	lifetime fiber performance for wear lifetime fiber performance for static lifetime stain removal lifetime colorfastness to light and atmospheric contaminants lifetime for tuft bind strength (edge ravel, yarn pulls, zippering) lifetime against delamination lifetime dimensional stability

modular installation methods



ashlar



brick



monolithic



quarter turn



FLOORING GROUP

jjflooringgroup.com

P.O. Box 1287
Dalton, GA 30722
p 800 241 4586
f 706 275 4433

INVISION **kinetex** LVT

A Division of **Engineered
FLOORS**