

PHOTON



J+J FLOORING GROUP

From our establishment in 1957, we have become one of the oldest exclusive manufacturers of *commercial flooring* in the United States. As one of the largest privately held mills, our **FAMILY-OWNERSHIP** provides a *heritage* of proven performance and expansive industry knowledge. Most importantly, our focus has always been on *people...* ensuring them that our products deliver the highest levels of **BEAUTY, PERFORMANCE** and **DEPENDABILITY**.

carpet | lvt | **kinetex**

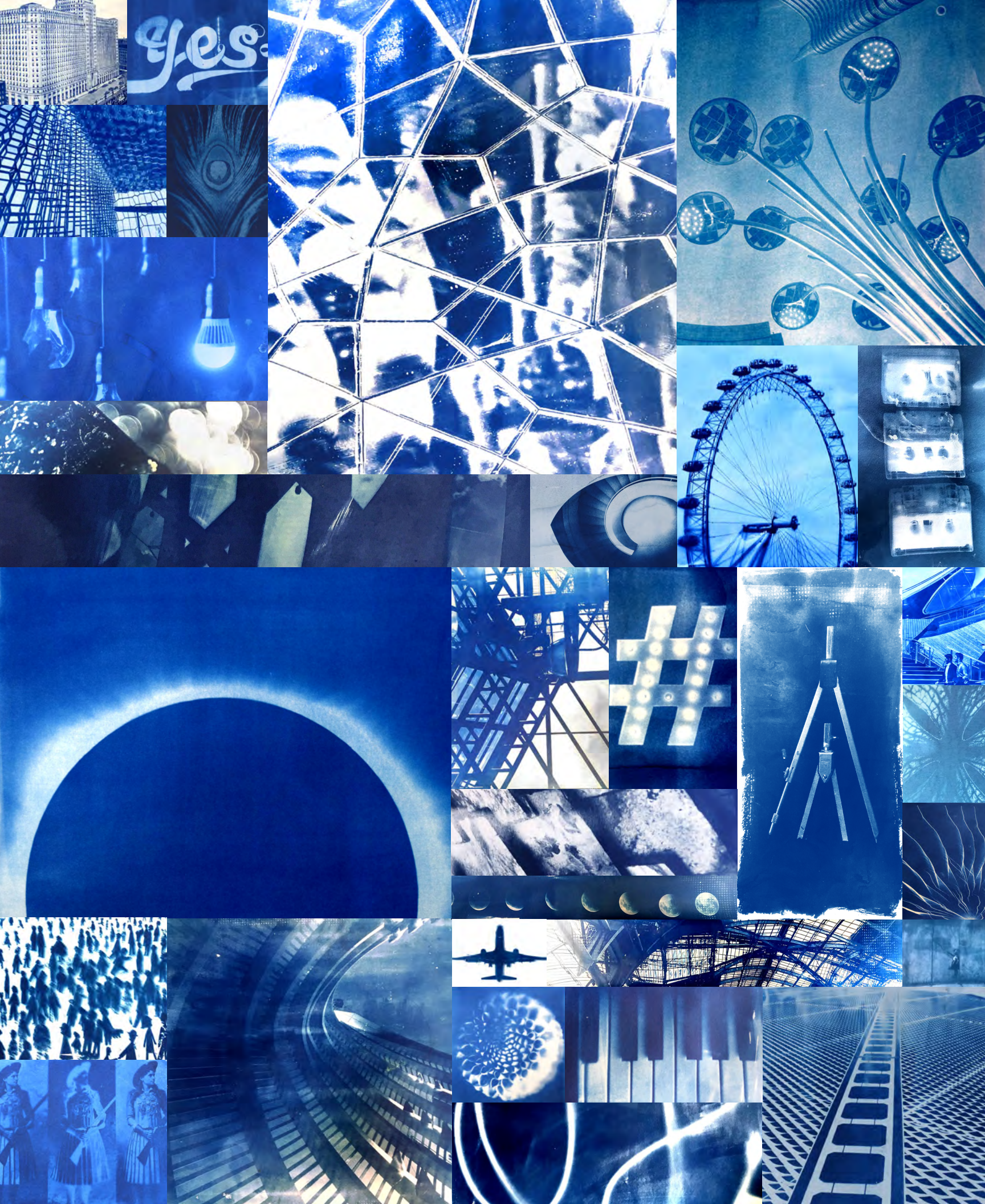
(cover) Photon Energy, Equinox, Turbine, ashlar
(right) Photon, Equinox, Turbine, herringbone

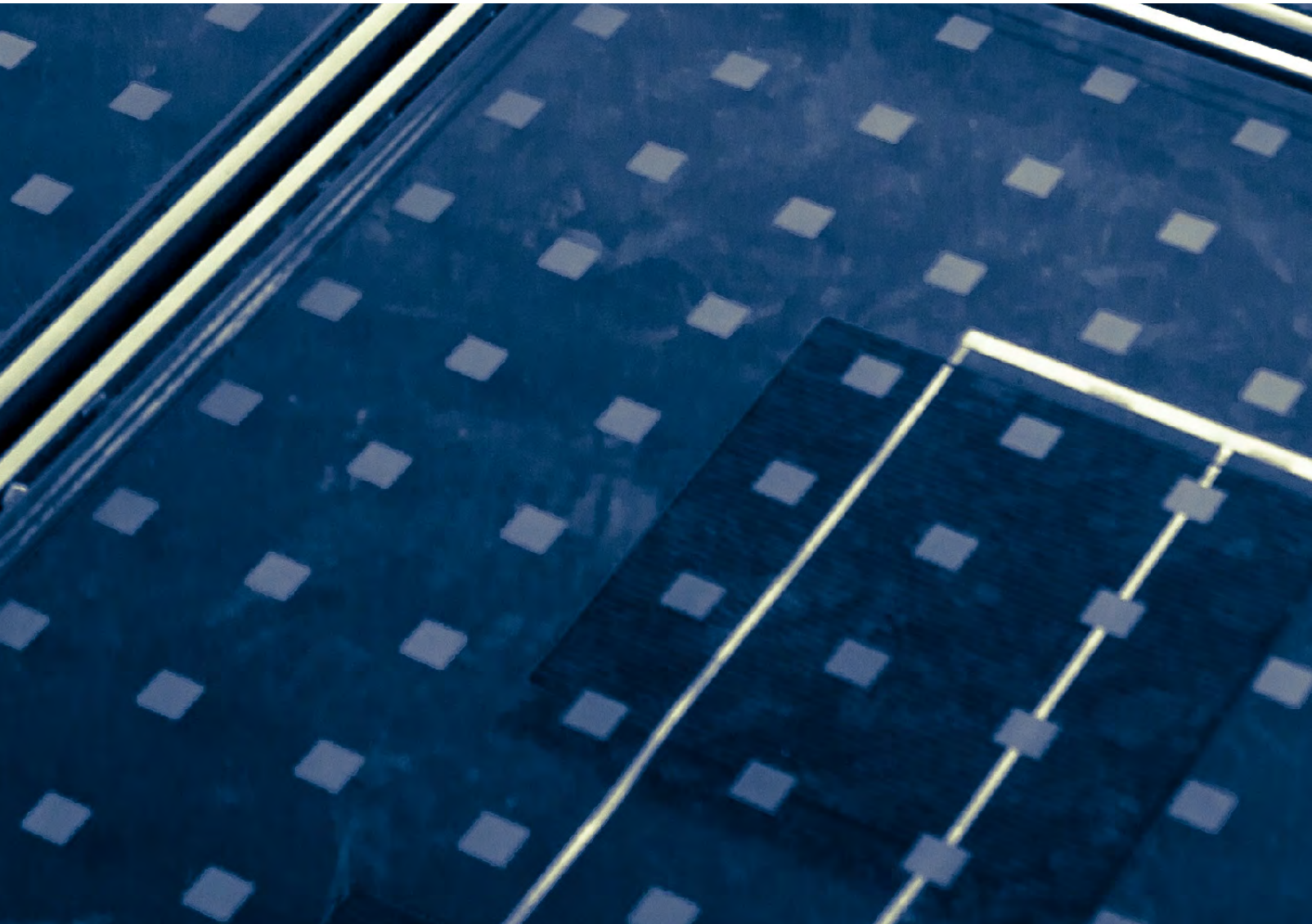


THE SOLAR STUDY

FOR THE LAST 4.5 BILLION YEARS, THE SUN HAS BEEN A CONSTANT RESOURCE THAT NOT ONLY SUSTAINS US, BUT ALSO INSPIRES US. IN MORE RECENT YEARS, THE SUN AND ITS RENEWABLE POWER HAVE ALLOWED US TO EXPLORE AND EXPAND ITS VALUE AND USES. THROUGH THE SOLAR STUDY, J+J'S DESIGN STUDIO EXAMINES HOW THE BUILT ENVIRONMENT REFLECTS THE IDEA OF UTILIZING THE SUN TO NOT ONLY BRIGHTEN OUR DAYS, BUT TO ALSO ILLUMINATE OUR NIGHTS.

THE GROWING INFLUENCE OF SOLAR POWER INSPIRES OUR NEWEST FLOORING COLLECTION. THE SOLAR STUDY (AZIMUTH, PHOTON, ZENITH) – THREE BEAUTIFUL INTERPRETATIONS OF PHOTOVOLTAIC ARCHITECTURE, DESIGNED TO WORK INDIVIDUALLY OR TOGETHER.

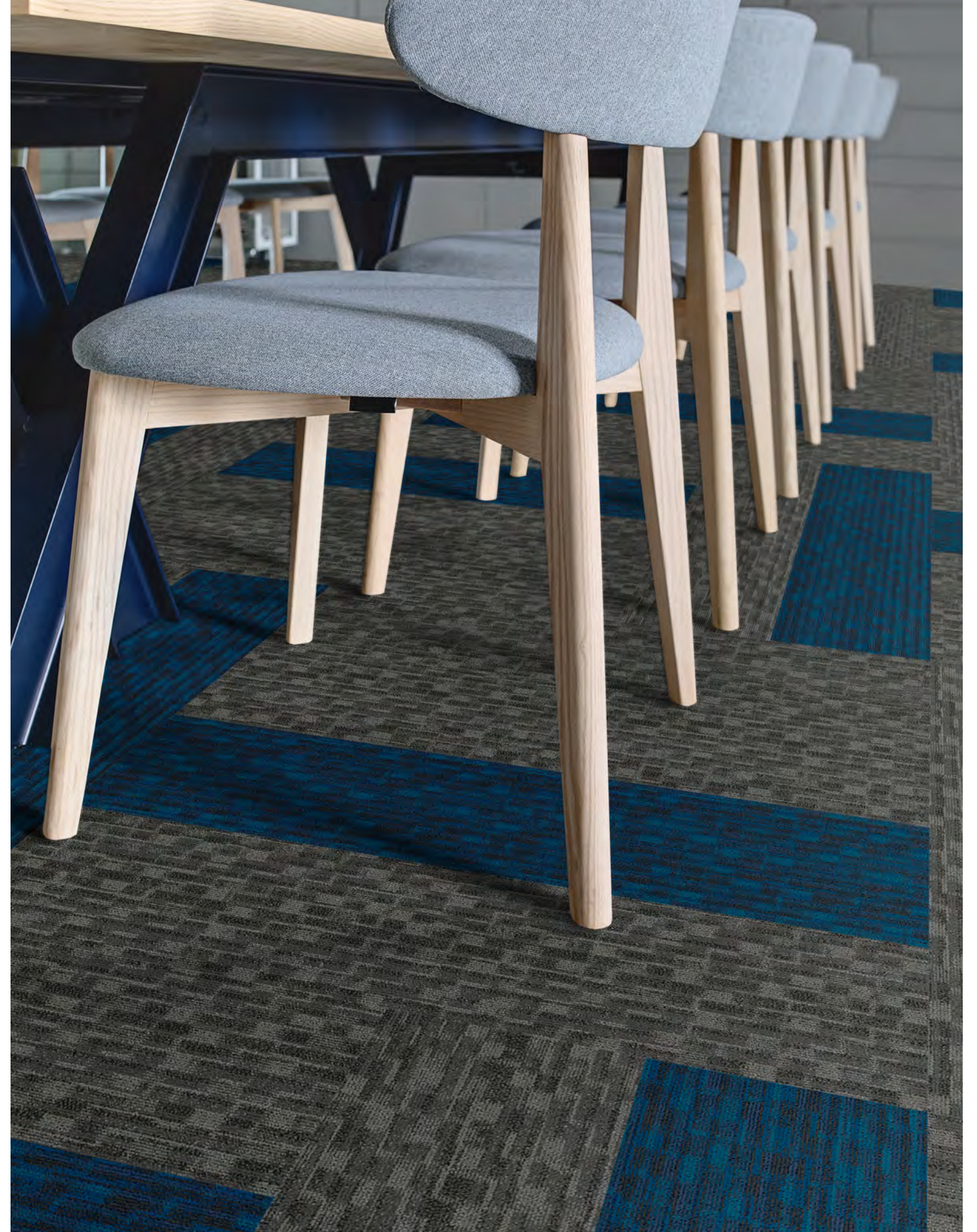




PHOTON

PHOTON MIMICS THE INTERNAL CELLULAR STRUCTURE OF SOLAR PANELS. WITH ITS ALL-LOOP CONSTRUCTION AND SUBTLE STRUCTURE, PHOTON IS A CLASSIC FOUNDATION PIECE.

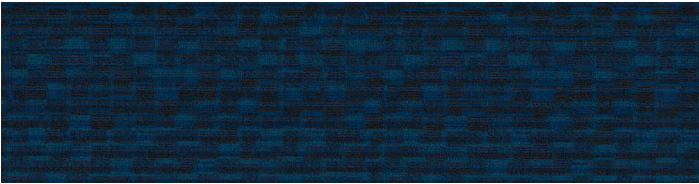
(right) Photon Energy, Turbine, basketweave.





SPECIFICATION

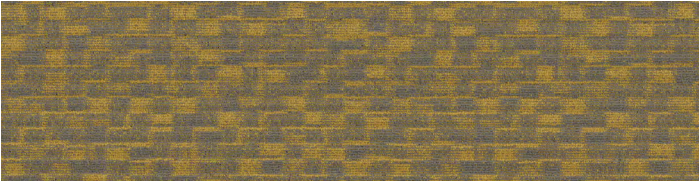
style	photon 7584 modular
construction	patterned loop
fiber type	100% Encore® SD Ultima Nylon with recycled content
dye method	solution
ounce weight	18 oz/sq yd (610 grams/m²)
gauge	1/12 gauge (4.72 rows/cm)
total thickness (nominal average)	0.25 inches (0.635 cm)
backing	Nexus® modular
size	12” x 48” (30.48 cm x 122 cm)



style 7584
color 2568
energy



style 7584
color 2570
radiate



style 7584
color 2572
eclipse



style 7584
color 2574
light



style 7584
color 2576
ion



style 7584
color 2569
crystalline



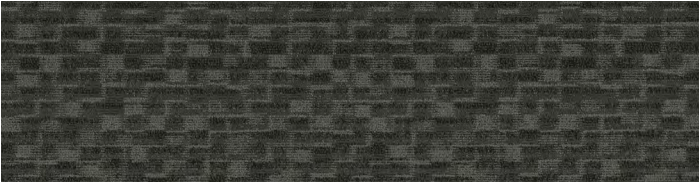
style 7584
color 2571
grid



style 7584
color 2573
magnetic

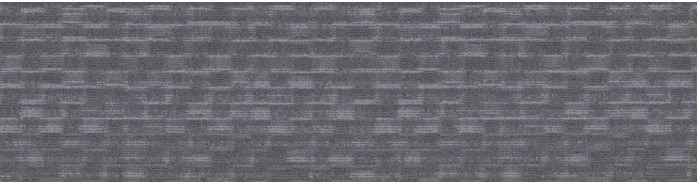


style 7584
color 2575
electron



style 7584
color 2577
turbine

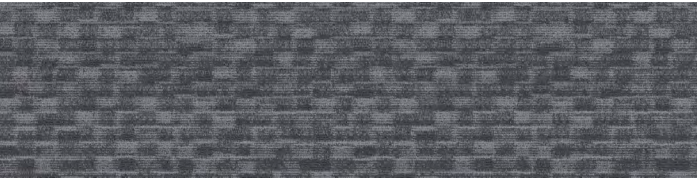
photon 7584



style 7584
color 2578
sun



style 7584
color 2580
equinox



style 7584
color 2579
acceptor

installation methods



ashlar



basketweave



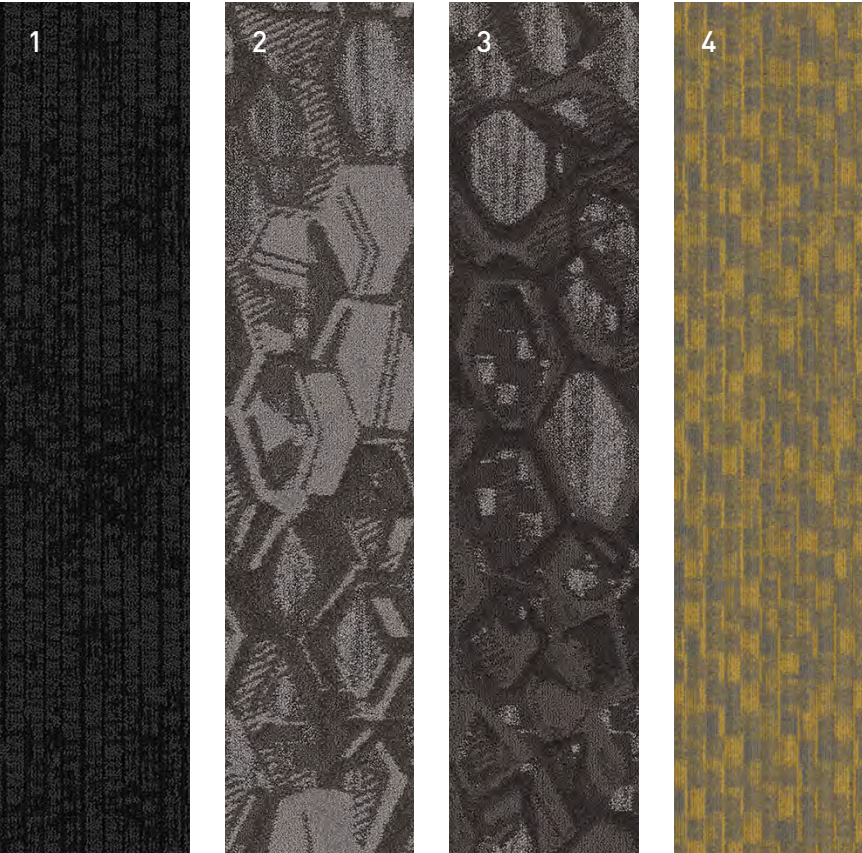
herringbone



parquet

the solar study (azimuth, photon, zenith) coordinating palette

The Solar Study is comprised of three patterns: *Azimuth*, *Photon* and *Zenith*. Each style has its own unique color palette that ranges from elegant neutrals to saturated hues. Although the three products are not direct color crossovers, the styles were designed to complement and work harmoniously within the collection’s color line (as shown on pg 14 and 16).



1	Azimuth	7583	#2539 Voltaic	Modular
2	Zenith	7716	#2558 Hybrid	Modular
3	Zenith	7716	#2567 Axis	Modular
4	Photon	7584	#2572 Eclipse	Modular



Photon, Equinox, ashlar
Zenith, Power, ashlar
Azimuth, Ohm, ashlar



product details

FIBER

Encore® SD Ultima®

Encore® SD Ultima® (with recycled content) is specifically engineered to maximize appearance retention with exceptional color, performance, sustainability and practicality.

BACKINGS

Nexus® Modular

Nexus modular products can be installed in a variety of ways and are performance engineered to be visually appealing. In addition, they are designed to accommodate your long-term flooring budget.

- Manufactured in an ISO 14001 certified facility
- Contains pre-consumer recycled content and contributes to LEED
- Recyclable through the J+J Flooring Group’s R4 Carpet

ADHESIVE

Commercialon® Premium Modular Adhesive

A high strength acrylic latex-based carpet adhesive specifically formulated for bonding modular PVC backed carpet to the floor. This premium adhesive is for use with all Nexus Modular Tile products. This adhesive is guaranteed for the life of the installation when used in accordance with the J+J Flooring Group Carpet Installation Handbook. Commercialon Premium Modular Adhesive meets the CRI Low-VOC Emission Criteria, CRI ID# PSA-425402. CommercialonPremium Modular Adhesive is non toxic, has ultra-low odor and is antimicrobial in the dry state.

OPTIONAL:
TileTabs®

TECHNOLOGIES

ProTex® Anti-Soil Treatment

ProTex is a proprietary chemical technology that is applied and bonded to the pile fiber to impede soiling and to improve cleanability. It is standard on all J+J Flooring Group products. ProTex works similarly to the technology used in nonstick cookware by lowering the surface energy of the fibers which increases soil release properties. Very small soil particles cause carpet to appear dull. Thanks to ProTex, small soil particles are effectively removed by vacuuming or wet cleaning.

OPTIONAL:
ProSept® Antimicrobial
Sentir® Advanced Odor-Blocking Technology

corporate programs



Green Circle - Zero Waste to Land-fill Operations Certification
We are proudly certified as a Zero Waste to Landfill manufacturer by GreenCircle Certified, LLC., a prominent third-party certifier of environmental claims. We are the first commercial flooring manufacturer in the United States to achieve this landfill free status and the first company in the industry to have its waste diversion efforts audited and verified by a recognized, third-party certifier.

To learn more about zero waste or our other initiatives see our sustainability progress report online at jjflooring.com/sustainability



We're on it.
The J+J Flooring Group Premium Customer Experience.

Our Premium Customer Experience is a carefully crafted process by which we guarantee that our customers will get the products, services and the reliability they expect from us.

To learn more visit:
jjflooring.com/customer-experience/

©2018 J&J Flooring Group, LLC - This unique design is protected under the U.S. Copyright Act of 1976. Any unauthorized copying or duplication of this design constitutes copyright infringement in violation of federal law. Due to the unique visual characteristics of modular carpets, pattern repeats and pattern run-off seams may appear more noticeable than in broadloom carpets. Such visual characteristics do not constitute a manufacturing defect, and as such, should be considered when selecting modular carpet and its installation.

These photographs are representations of the installation for this modular product. Your modular installation may look different than these photos depending upon individual tile placement, lighting, and overall space layout, including furnishings. Final tile placement and the resulting visual is thus the customer’s, and not J+J Flooring Group’s responsibility.



specifications

style	photon 7584 modular
construction	patterned loop
fiber type	100% EncoreSD Ultima Nylon with recycled content
dye method	solution
ounce weight	18 oz/sq yd (610 grams/m²)
gauge	1/12 gauge (4.72 rows/cm)
backing	Nexus® modular
size	12" x 48" (30.48 cm x 122 cm)
pattern repeat	n/a
total thickness (nominal average)	0.25 inches (0.635 cm)
special technology	ProTex® anti-soil treatment
optional special technologies	ProSept® antimicrobial Sentir® advanced odor blocking treatment
physical testing	flooring radiant panel (class 1) pill test – (passes) smoke density (less than 450 flaming) static generation –(less than 3.0 kv) ADA compliance (compliant for accessible routes)
warranties	lifetime fiber performance for wear lifetime fiber performance for static lifetime stain removal lifetime colorfastness to light and atmospheric contaminants lifetime for tuft bind strength (edge ravel, yarn pulls, zippering) lifetime against delamination lifetime dimensional stability

modular installation methods



ashlar



basketweave



herringbone



parquet



FLOORING GROUP

A DIVISION OF ENGINEERED FLOORS

jjflooring.com

P.O. Box 1287
Dalton, GA 30722
p 800 241 4586
f 706 275 4433

carpet | lvt | **kinetex**