



INVISION



FLOORING GROUP

# STUDENT UNION









TRADITION

# STUDENT UNION

Invision's Student Union Collection makes it easy to incorporate your school colors from the ground up. With a selection of 15 top school and university colors, simply mix-and-match to create your school's customized carpet. Our four modular pattern options offer the opportunity to be as **loud** or simply stated as your space desires. From student centers and athletic facilities to orientation areas, classrooms and student housing, you can be sure your pride is shown.



## WHAT'S YOUR SCHOOL'S STORY?

A well-executed brand strategy is becoming more and more important in attracting and retaining today's well-informed student. Capitalizing on the school's brand is an opportunity to reinforce the student's connection with the school and can have tremendous effects on student recruitment, student retention and financial implications.

By selecting interiors that are branding-focused, you are able to bring the school's energy to life throughout the campus while offering a memorable experience for future alumni.







SCHOLAR



TRADITION

STUDENT UNION 3



## CREATE YOUR CUSTOM STUDENT UNION DESIGN

### CREATIVITY MEETS SIMPLICITY

Our Student Union Collection is composed of four modular carpet designs. Three of the designs allow you to easily incorporate your school's identity by selecting from our palette of 15 top collegiate colors. We also offer a tonal pattern that provides the flexibility to coordinate the products throughout a facility.

## Step

# 1

### Select Your Pattern:



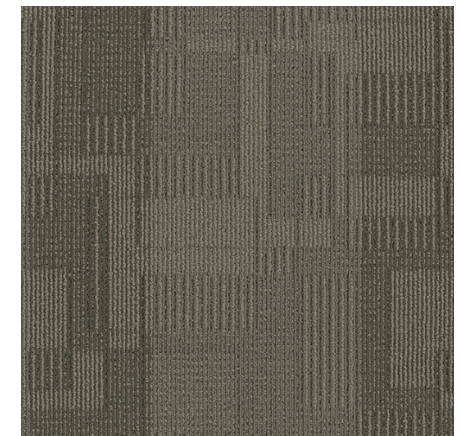
Tradition



Legend



Scholar



Champion (Coordinating tonal option)



# Step 2

Select Your School Colors:



20065  
Gold Rush



20056  
Pure Yellow



20068  
Sunburst Orange



20059  
True Gray



20066  
Gold



20063  
Orange



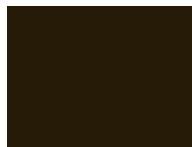
20057  
Iron Gray



20064  
Code Red



20069  
Red



20019  
Black



20060  
Midnight Sky



20058  
Royal Purple



20061  
Dark Pine



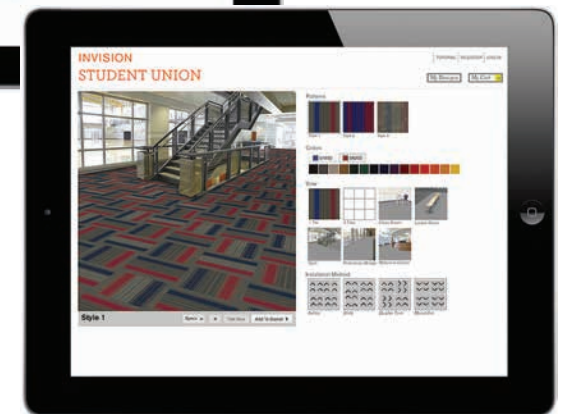
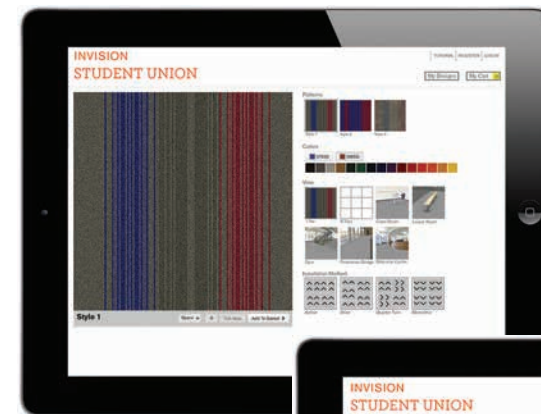
20062  
Deep Emerald



20067  
Royal Blue

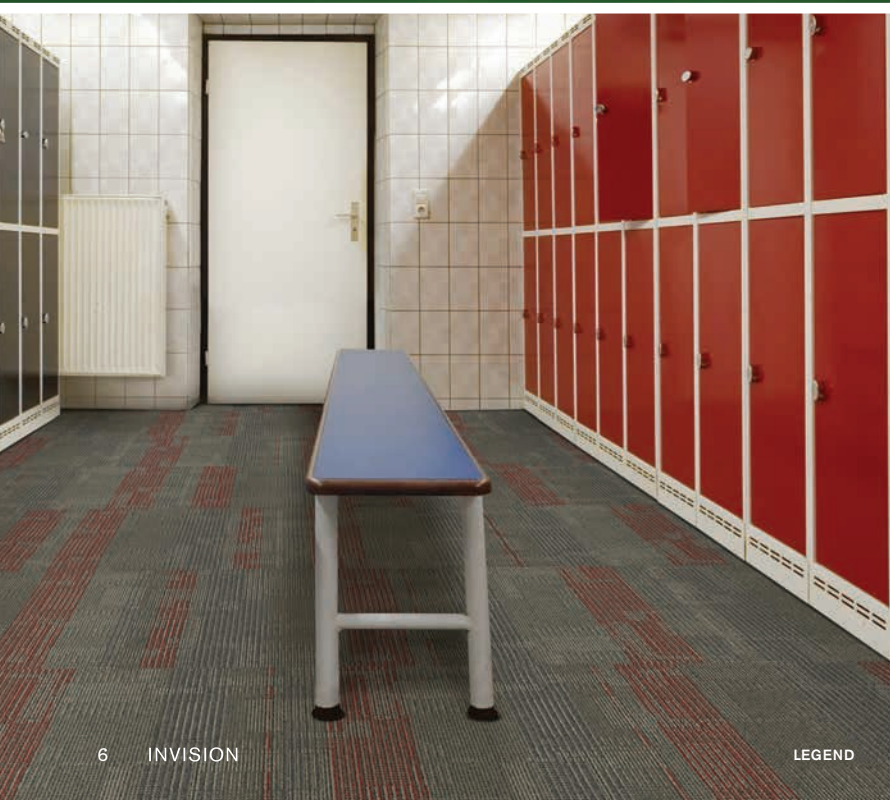
# Step 3

Contact Your J+J Flooring Group Sales Representative To Order Your Custom Sample.



Visit our Student Union design tool at [www.jj-invision.com/studentunion](http://www.jj-invision.com/studentunion) to see your custom branded carpet simulated in a student-focused space.









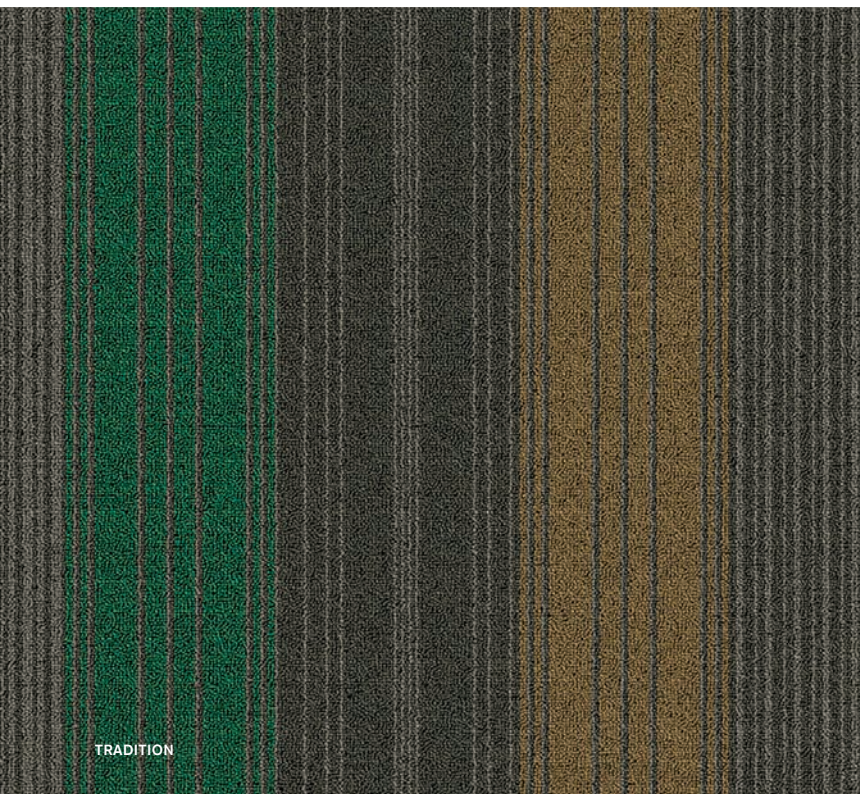








CHAMPION



TRADITION



Each Student Union product is manufactured using 100% J+J Encore® SD Ultima® solution dyed nylon, offering the highest aesthetic and performance standards. Our fiber is specifically engineered to maximize visual retention and is backed by our lifetime performance warranties:

- Lifetime Fiber Performance for Wear
- Lifetime Fiber Performance for Static
- Lifetime Colorfastness to Atmospheric Contaminants
- Lifetime Stain Removal
- Lifetime Colorfastness to Light



Peel



Place



Press

## Easy In, Easy Out With TileTabs™

Installing and replacing our Student Union carpet tiles are easy with TileTabs. Just peel, place and press. These press-and-stick tabs offer a glue-free solution for nonpermanent installations. You're free to explore color and design combinations that fit each learning space and when you're ready for a change, swapping out tiles is easy and quick. TileTabs eliminates drying time and enables immediate occupancy.



Each school has a story  
and our Student Union  
Collection allows you the  
ability to incorporate your  
time-honored heritage  
throughout your campus.

# INVISION

J+J FLOORING GROUP

[jj-invision.com/studentunion](http://jj-invision.com/studentunion)

PO Box 1287  
Dalton, Georgia 30722  
800 241 4586



LEGEND

