

# stellar



FLOORING GROUP

INVISION kinetex

NeoCon 2016





In our quest for creative inspiration, J+J explores the natural world, the vast canvas of a desert landscape carved by wind and water, stretched beneath a canopy of blue where the light of day gives way to a night full of stars.

Taking cues from the ingenuity of nature, J+J introduces Stellar, a new collection that evokes the colors, patterns and forms of earth and sky, shaped by weather, time and light.

At J+J, the pursuit of beauty is infinite.

 FLOORING GROUP

INVISION **kinetex**









# stellar

The idea behind our trip to Death Valley was to create a collection that was texturally rich with a sophisticated tonally based color palette. We wanted to create an environment based on a moment in time and what better way to achieve this then immersing our design team in an environment that offered somany opportunities through physical location and moments within a 24 hour time span.

There is a presence in Death Valley that is palpable and our goal was to capture that by breaking away from digital development tools and embracing our intuitive aesthetic sensibilities through the use of sketching and painting. Each designer captured this presence through various forms of media i.e. photography, pencil sketches and watercolor paintings.

In the end our hope is that when you come into a space with one of the Stellar patterns you feel at least in some small way a sense of “Time & Space” hence the name Stellar.

*David Fuehrer – Director of Product*









# *Leave the makeup behind, and let's go camping!*

*[This expedition was more like glamping than camping- but what an adventure!]*

Our J+J design team packed into an SUV hauling an Airstream and made our way into Death Valley National Park. What an amazing couple of days in one of the most beautiful places on earth! So many stunning landscapes and picturesque views in a 5,270 square mile area. Spending this time with our work family allowed us to share some spectacular moments. Laughing until we cried. Telling stories around the campfire. Hoping we did not run into a snake (which, thankfully, we avoided). Some of us conquering our fear of heights as we climbed within the beautiful landscapes. Sitting in silence as the sun rose over the dunes and mountains.

We were inspired by the sheer beauty that surrounded us. The colors overflowed from the mountains and tiniest of rocks. We hiked to breathtaking places we could not have dreamed of.

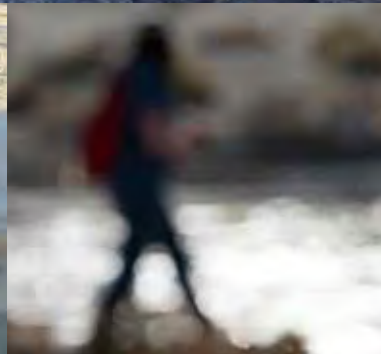
This opportunity to be inspired was such a blessing, and we will each remember this excursion for the rest of our lives. Our entire team hopes to have the opportunity to one day return to Death Valley and absorb even more of its beauty and tranquility.

*Laura Holzer – Senior Designer*















A black and white photograph of a vast, rocky landscape. The foreground is filled with numerous dark, irregularly shaped rocks and boulders of various sizes. In the background, a range of dark, silhouetted mountains stretches across the horizon under a pale, overcast sky. The overall mood is desolate and expansive.

# STELLAR COLLECTION





2007  
salt creek



2008  
golden cayon



2009  
jubilee pass



2010  
furnace creek



2011  
panamint



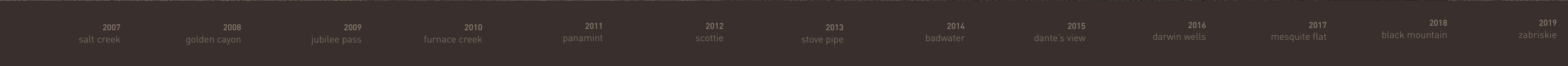
2012  
scottie



2013  
stove pipe



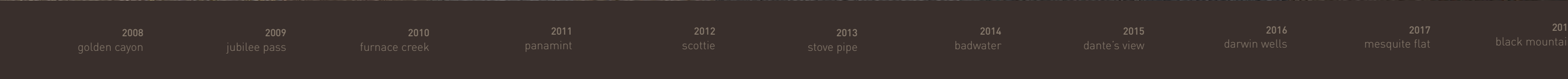
2014  
badwater



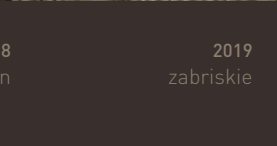
2015  
dante's view



2016  
darwin wells



2017  
mesquite flat



2018  
black mountain



2019  
zabriskie





TERRA FIRMA



## terra firma

From the exposed desert landscape carved by wind, water and time comes the inspiration for Terra Firma. This design, created to emulate the natural beauty of cracked earth, forms a balanced interpretation of the etched landscape with the use of sophisticated texture and patterning that effortlessly traverse throughout the 24" x 24" tiles.

terra firma *mesquite flat*







terra firma *furnace creek*



terra firma *zabriskie*





*terra firma black mountain*



*terra firma zabriskie*



A black and white photograph of sand dunes. The dunes are rolling and covered in sand, with some areas appearing darker due to shadows. The word "DUNE" is written in large, white, sans-serif capital letters on the right side of the image, positioned over the sand dunes.

DUNE



## dune

Dune explores the shadow rippled mounds and graceful curves of the Death Valley desert. The smooth motion of the pattern creates a soft aesthetic with intriguing depth.

milky way *mesquite flat*







dune zabirskie





dune black mountain



dune zabriskie





MILKY WAY



## milky way

The Milky Way pattern captures the beauty of multiple layers of stars throughout the deep night sky. The concentration of light comes and goes across the horizon as does the different tones and colors that glide through the 24" x 24" tiles of this organic pattern.

*milky way mesquite flat*







*milky way black mountain*

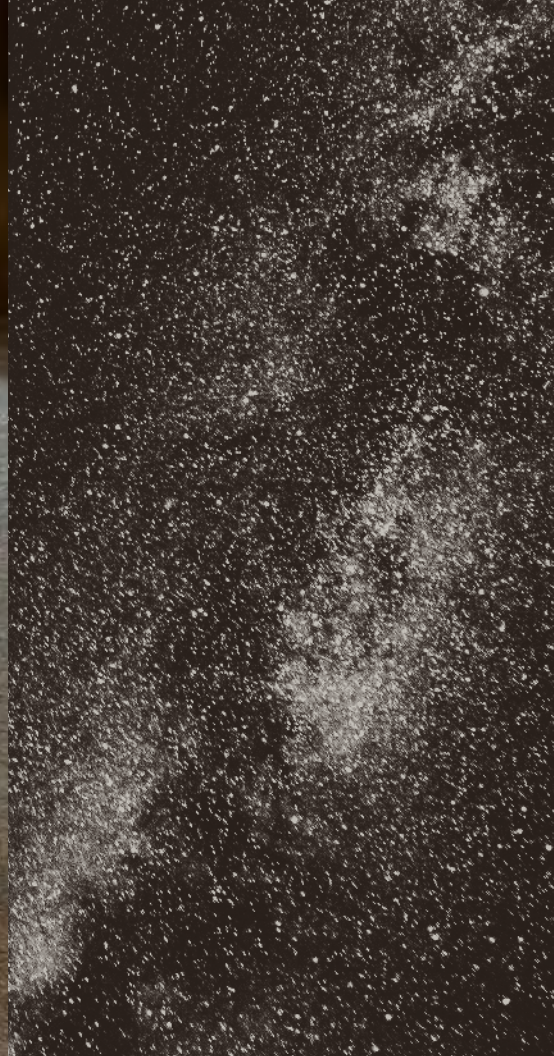


*milky way mesquite flat*





milky way *furnace creek*



milky way *zabriskie*



milky way *furnace creek and zabriskie*



A long-exposure photograph of a starry night sky, showing numerous curved white lines (star trails) against a dark background. The trails are most prominent in the upper right quadrant, where they form concentric arcs. The lower portion of the image is dominated by a solid black silhouette of a landscape, likely mountains or hills, which provides a stark contrast to the light trails above.

**TIME LAPSE**



## time lapse

Time Lapse elegantly reflects the vastness and serenity of millions of stars formed against the Death Valley night sky. The subtle, circular migration of stars in celestial movement begins to take shape as 24" x 24" tiles are paired together and the beauty of the organic motion appears.

time lapse *mesquite flat*



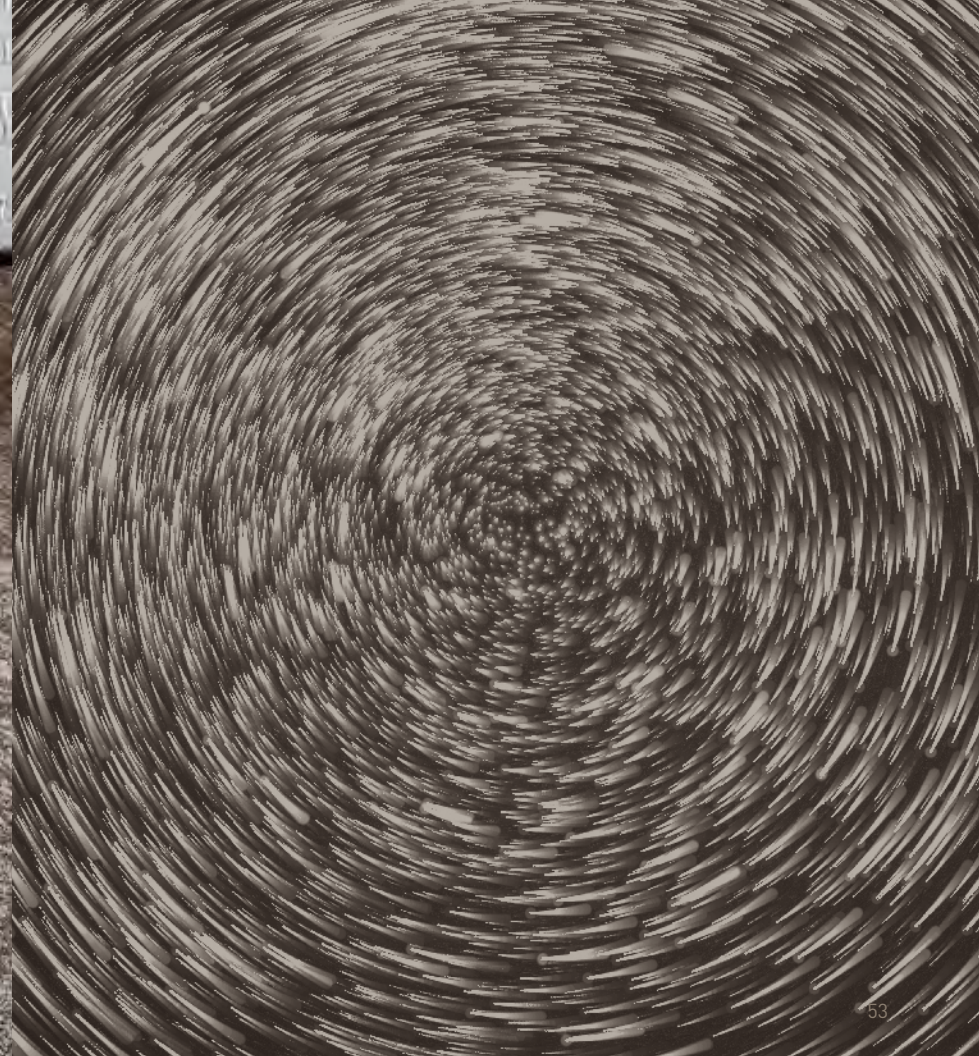




time lapse *black mountain*



time lapse *zabriske*







time lapse *zabriskie*



time lapse *black mountain*







STRATA



## strata

Inspired by the delicate, fibrous patterning formed deep within the layers of our planet's sedimentary rock, Strata unearths a softer side of hard surface. The 18" x 36" planks cleverly allude to the shape of stone slabs to not only support the visual of classic hard surface installs, but also provide the flexibility to create a more unique and modern aesthetic.

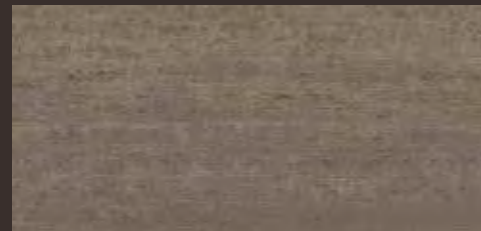
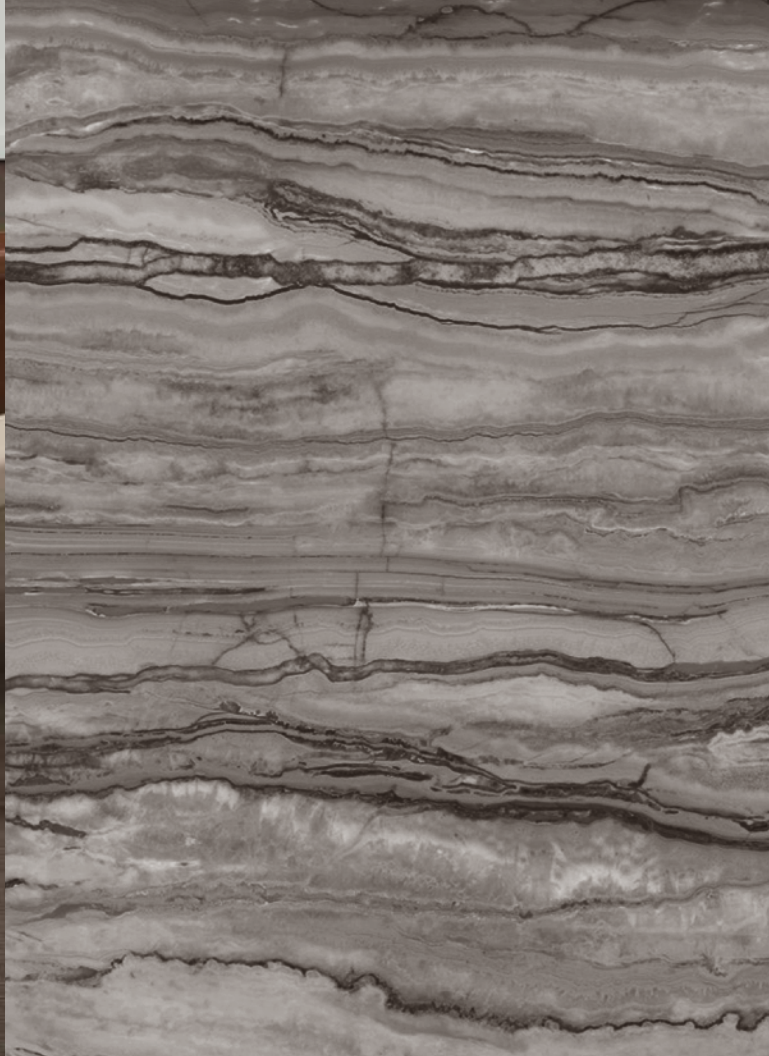
strata *geologic*



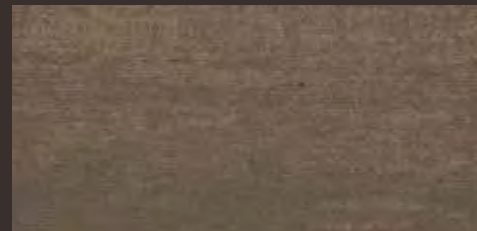




strata *lithic*



1846  
jasper



1847  
clastic



1848  
feldspar



1849  
lithic



1850  
formation



1851  
geologic



1852  
sediment



1853  
volcanic



1854  
silt





strata *silt*



strata *volcanic*





TIMBER



## timber

Inspired by the unexpected use of wood within multiple aspects of interior spaces, Timber goes against the grain by offering a departure from the literal and often expected translation of wood patterning. The 12" x 48" plank format allows for traditional wood-like installations as well as multiple unconventional layouts that create a modern aesthetic that effortlessly supports any additional wood grains or colours.

timber *hemlock*







timber *catalpa*



1928  
hemlock

1920  
ironwood

1925  
cypress

1921  
sassafras

1923  
aspen

1922  
spruce

1924  
catalpa

1926  
buckthorn

1927  
sequoia





timber *catalpa* and *transit pass*



timber *ironwood*











