

TERRA COLORIS





FLOORING GROUP

From our establishment in 1957, we have become one of the oldest exclusive manufacturers of *commercial flooring* in the United States. As one of the largest privately held mills, our **FAMILY-OWNERSHIP** provides a *heritage* of proven performance and expansive industry knowledge. Most importantly, our focus has always been on *people...* ensuring them that our products deliver the highest levels of **BEAUTY, PERFORMANCE** and **DEPENDABILITY.**

carpet | lvt | kinetex

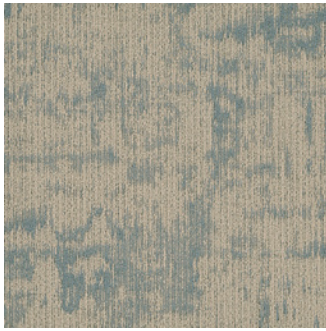
[cover] Terra Coloris *Malachite*, monolithic.

[right] Terra Firma *Salt Creek*, ashlar, Terra Coloris *Chromium* and *Lazurite*, accent.

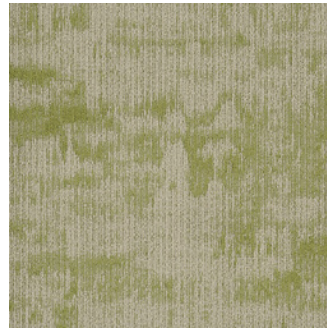




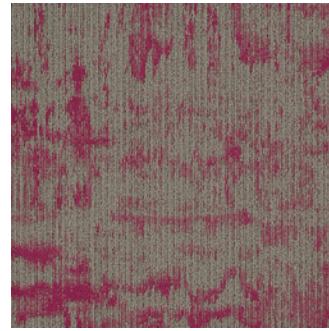
terra coloris 7058



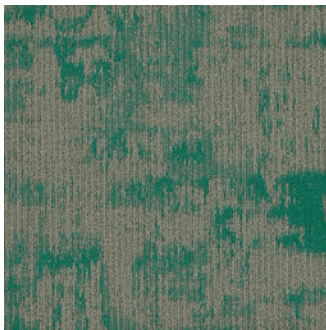
style 7058
2300
lazurite



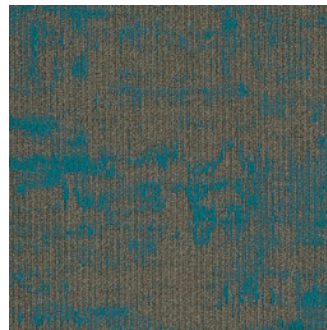
style 7058
2301
chromium



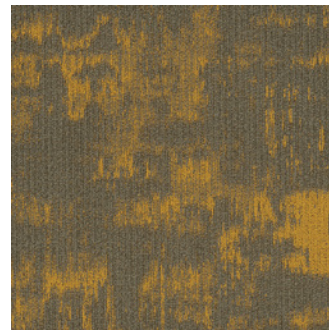
style 7058
2302
rose madder



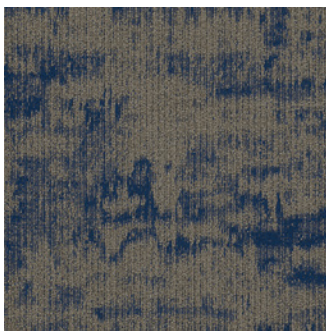
style 7058
2303
malachite



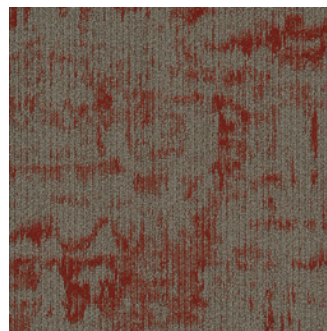
style 7058
2304
azurite



style 7058
2305
cadmium



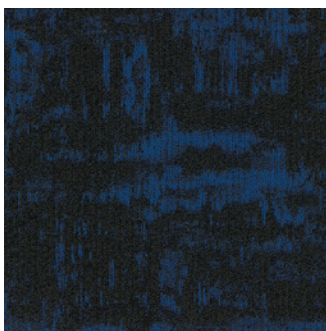
style 7058
2306
lapis



style 7058
2307
vermilion



style 7058
2308
manganese



style 7058
2309
indigo



style 7058
2310
diopside

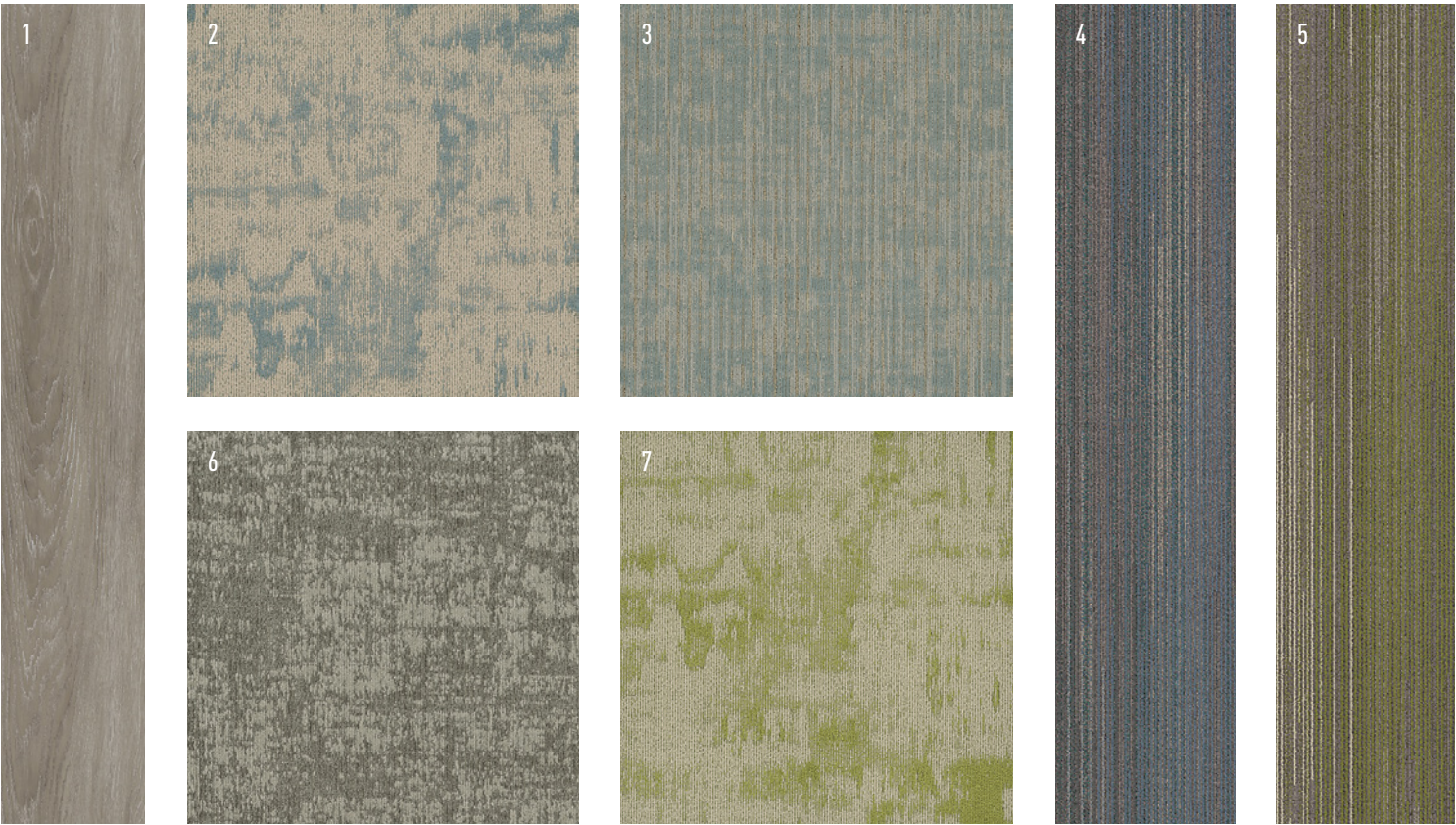


style 7058
2311
hematite









Beyond the beauty of individual products, our flooring coordinates effortlessly with each other. This offering enables you to blend a range of designs with tonal simplicity to create palettes that reflect the demands of each unique space.

1	Framework	V5001	#1015 Beam	LVT
2	Terra Coloris	7058	#2300 Lazurite	Modular
3	Meadow	7097	#2089 Tranquil	Modular
4	Index	7009	#1831 Table	Modular
5	Index	7009	#1829 Chapter	Modular
6	Craftwork	7099	#2200 Potter	Modular
7	Terra Coloris	7058	#2301 Chromium	Modular

(left) Terra Coloris *Vermilion*, monolithic, and Index *Catalog, Publication* and *Reference* ashlar.

product details

FIBER

Encore® SD (with recycled content) Encore SD is specifically engineered to maximize appearance retention with exceptional color, performance, sustainability and practicality.

BACKINGS

Nexus® Modular

Nexus modular products can be installed in a variety of ways and are performance engineered to be visually appealing. In addition, they are designed to accommodate your long-term flooring budget.

- Manufactured in an ISO 14001 certified facility
- Contains pre-consumer recycled content and contributes to LEED
- Recyclable through the J+J Flooring Group's R4 Carpet Reclamation Program

OPTIONAL:

Nexus Cushion

ADHESIVES

Commercialon® Premium Modular Adhesive

A high strength acrylic latex-based carpet adhesive specifically formulated for bonding modular PVC backed carpet to the floor. This premium adhesive is for use with all Nexus Modular Tile products. This adhesive is guaranteed for the life of the installation when used in accordance with the J+J Flooring Group Carpet Installation Handbook. Commercialon Premium Modular Adhesive meets the CRI Low-VOC Emission Criteria, CRI ID# PSA-425402. Commercialon Premium Modular Adhesive is non toxic, has ultra-low odor and is antimicrobial in the dry state.

OPTIONAL:

TileTabs® - High Tack Adhesive Tabs (modular only)

TECHNOLOGIES

ProTex® Soil Release

ProTex is a proprietary fluorochemical technology that is applied and bonded to the pile fiber to impede soiling and to improve cleanability. It is standard on all J+J Flooring Group products.

OPTIONAL:

ProSept® Antimicrobial

Sentir® Advanced Odor-Blocking Technology



Green Circle - Zero Waste to Landfill Operations Certification

We are proudly certified as a Zero Waste to Landfill manufacturer by GreenCircle Certified, LLC., a prominent third-party certifier of environmental claims. We are the first commercial flooring manufacturer in the United States to achieve this landfill free status and the first company in the industry to have its waste diversion efforts audited and verified by a recognized, third-party certifier.

To learn more about zero waste or our other initiatives see our sustainability progress report online at jjflooringgroup.com/sustainability



We're on it.

The J+J Flooring Group Premium Customer Experience.

Our Premium Customer Experience is a carefully crafted process by which we guarantee that our customers will get the products, services and the reliability they expect from us.

To learn more visit jjflooringgroup.com/about/cx

©2017 J&J Flooring Group, LLC - This unique design is protected under the U.S. Copyright Act of 1976. Any unauthorized copying or duplication of this design constitutes copyright infringement in violation of federal law.

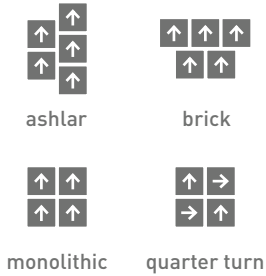
Due to the unique visual characteristics of modular carpets, pattern repeats and pattern run-off seams may appear more noticeable than in broadloom carpets. Such visual characteristics do not constitute a manufacturing defect, and as such, should be considered when selecting modular carpet and its installation.

These photographs are representations of the installation for this modular product. Your modular installation may look different than these photos depending upon individual tile placement, lighting, and overall space layout, including furnishings. Final tile placement and the resulting visual is thus the customer's, and not J+J Flooring Group's responsibility.



style	terra coloris 7058 modular
construction	patterned loop
fiber type	100% Encore® SD nylon
dye method	solution
ounce weight	22.0 oz/sy (746 grams/m²)
gauge	1/12 (4.72 rows/cm)
backing	Nexus® modular
size	24" x 24" (61 cm x 61 cm)
pattern repeat	n/a
total thickness (nominal average)	.25 inches (0.635 cm)
special technology	ProTex® fluorochemical
optional special technologies	ProSept® antimicrobial Sentir® advanced odor blocking treatment
physical testing	flooring radiant panel (class 1) pill test – (passes) smoke density (less than 450 flaming) static generation –(less than 3.5 kv) ADA compliance (compliant for accessible routes)
warranties	lifetime fiber performance for wear lifetime fiber performance for static lifetime stain removal lifetime colorfastness to light and atmospheric contaminants lifetime for tuft bind strength (edge ravel, yarn pulls, zippering) lifetime against delamination lifetime dimensional stability

modular installation methods





jjflooringgroup.com

P.O. Box 1287
Dalton, GA 30722
p 800 241 4586
f 706 275 4433

carpet | lvt | kinetex

A Division of **Engineered
FLOORS**