

# ZENITH



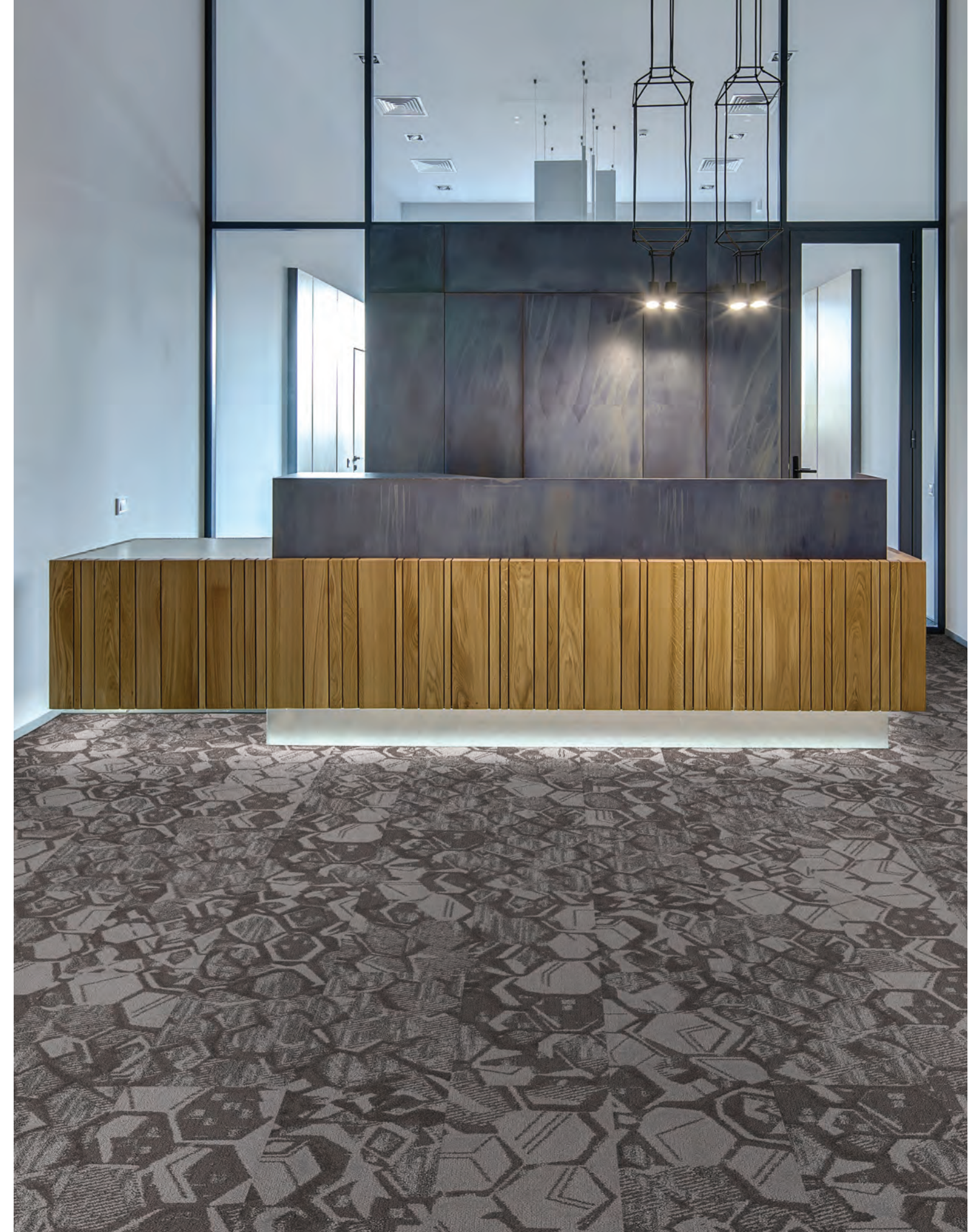


**J+J FLOORING GROUP**

From our establishment in 1957, we have become one of the oldest exclusive manufacturers of *commercial flooring* in the United States. As one of the largest privately held mills, our FAMILY-OWNERSHIP provides a *heritage* of proven performance and expansive industry knowledge. Most importantly, our focus has always been on *people...* ensuring them that our products deliver the highest levels of **BEAUTY, PERFORMANCE and DEPENDABILITY.**

**carpet | lvt | kinetex**

[cover] Zenith, Power, ashlar  
[right] Zenith, Hybrid, ashlar





# THE SOLAR STUDY

FOR THE LAST 4.5 BILLION YEARS, THE SUN HAS  
BEEN A CONSTANT RESOURCE THAT NOT ONLY  
SUSTAINS US, BUT ALSO INSPIRES US. IN MORE  
RECENT YEARS, THE SUN AND ITS RENEWABLE  
POWER HAVE ALLOWED US TO EXPLORE AND  
EXPAND ITS VALUE AND USES. THROUGH THE  
SOLAR STUDY, J+J'S DESIGN STUDIO EXAMINES  
HOW THE BUILT ENVIRONMENT REFLECTS THE  
IDEA OF UTILIZING THE SUN TO NOT ONLY  
BRIGHTEN OUR DAYS, BUT TO ALSO ILLUMINATE  
OUR NIGHTS.

THE GROWING INFLUENCE OF SOLAR POWER  
INSPIRES OUR NEWEST FLOORING COLLECTION  
THE SOLAR STUDY (AZIMUTH, PHOTON, ZENITH)  
- THREE BEAUTIFUL INTERPRETATIONS OF  
PHOTOVOLTAIC ARCHITECTURE, DESIGNED TO  
WORK INDIVIDUALLY OR TOGETHER.







## ZENITH

A DIRECT INTERPRETATION OF SOLAR CELLS IN PHOTOVOLTAIC ARCHITECTURE, ZENITH RE-IMAGINES THE SOLAR GRID THROUGH LAYERS OF GEOMETRIC PATTERNING.

(right) *Zenith, Power*, ashlar







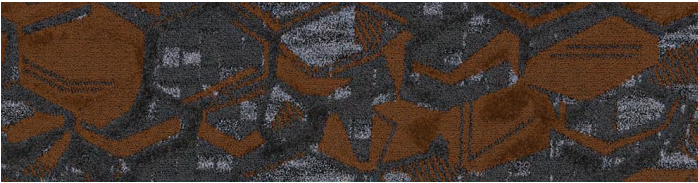
Zenith, Hybrid, basketweave



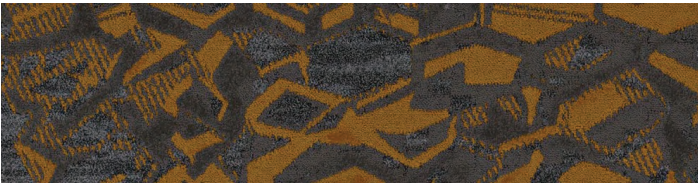


SPECIFICATION

style	zenith 7716 modular
construction	multi-level tip sheared loop
fiber type	100% Encore® SD Ultima® Nylon with recycled content
dye method	solution
ounce weight	36.0 oz/sq yd (1220.60 grams/m²)
gauge	1/10 (3.94 rows/cm)
pattern repeat	n/a
total thickness (nominal average)	0.312 inches (0.79 cm)
backing	Nexus® modular
size	12” x 48” (30.48 cm x 122 cm)



style 7716  
color 2554  
waveform



style 7716  
color 2555  
peak



style 7716  
color 2556  
particle



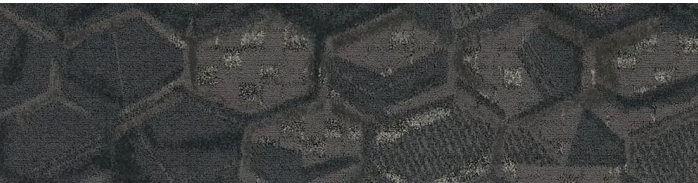
style 7716  
color 2557  
module



style 7716  
color 2558  
hybrid



style 7716  
color 2559  
conductor



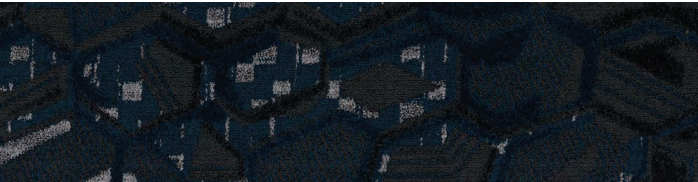
style 7716  
color 2560  
converter



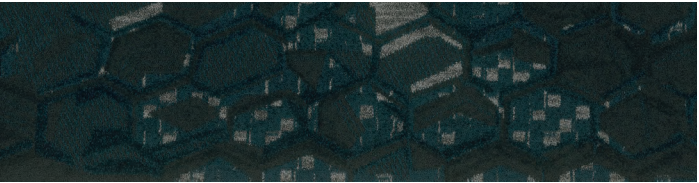
style 7716  
color 2561  
cell



style 7716  
color 2563  
spectrum



style 7716  
color 2564  
amp



style 7716  
color 2565  
volt



style 7716  
color 2566  
power



style 7716  
color 2567  
axis

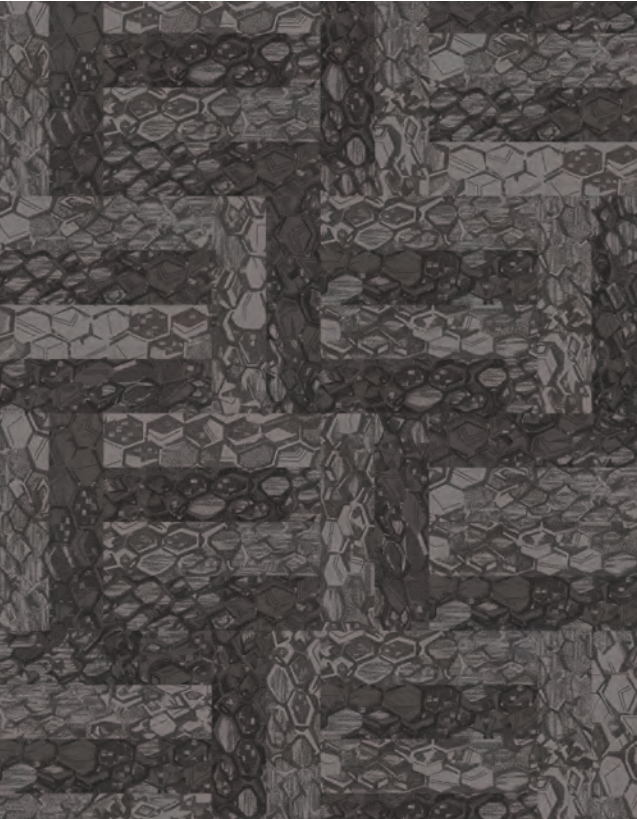
zenith 7716



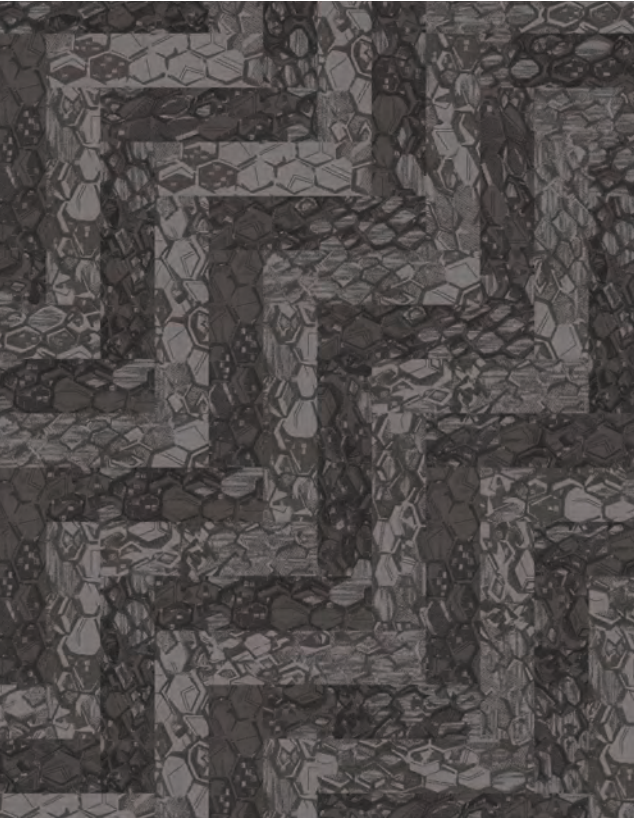
installation methods



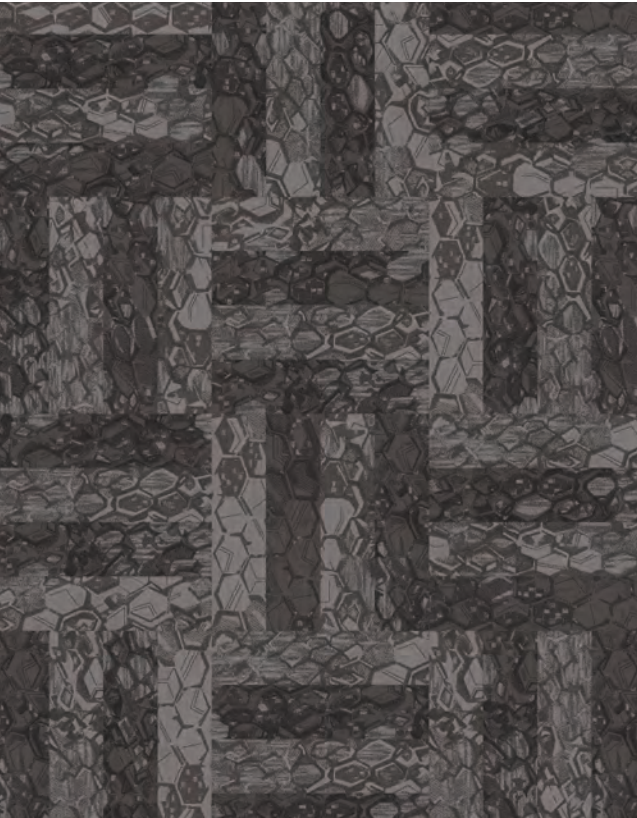
ashlar



basketweave



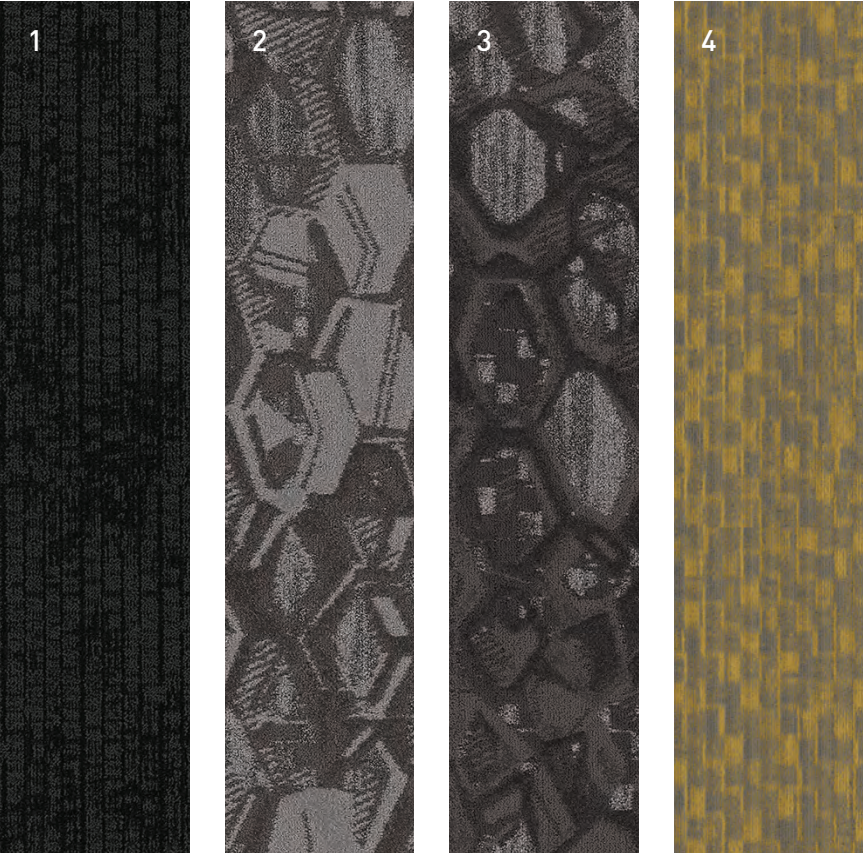
herringbone



parquet

the solar study (azimuth, photon, zenith) coordinating palette

The Solar Study is comprised of three patterns: *Azimuth*, *Photon* and *Zenith*. Each style has its own unique color palette that ranges from elegant neutrals to saturated hues. Although the three products are not direct color crossovers, the styles were designed to complement and work harmoniously within the collection's color line (as shown on pg 14 and 16).



1	Azimuth	7583	#2539 Voltaic	Modular
2	Zenith	7716	#2558 Hybrid	Modular
3	Zenith	7716	#2567 Axis	Modular
4	Photon	7584	#2572 Eclipse	Modular





Zenith, Hyrid, basketweave  
Azimuth, Ohm, Voltaic, ashlar  
Photon, Acceptor, ashlar





Zenith, Axis, Power, herringbone  
Azimuth, Voltair, herringbone



product details

FIBER

Encore® SD Ultima®

Encore® SD Ultima® (with recycled content) is specifically engineered to maximize appearance retention with exceptional color, performance, sustainability and practicality.

BACKINGS

Nexus® Modular

Nexus modular products can be installed in a variety of ways and are performance engineered to be visually appealing. In addition, they are designed to accommodate your long-term flooring budget.

- Manufactured in an ISO 14001 certified facility
- Contains pre-consumer recycled content and contributes to LEED
- Recyclable through the J+J Flooring Group's R4 Carpet

ADHESIVE

Commercialon® Premium Modular Adhesive

A high strength acrylic latex-based carpet adhesive specifically formulated for bonding modular PVC backed carpet to the floor. This premium adhesive is for use with all Nexus Modular Tile products. This adhesive is guaranteed for the life of the installation when used in accordance with the J+J Flooring Group Carpet Installation Handbook. Commercialon Premium Modular Adhesive meets the CRI Low-VOC Emission Criteria, CRI ID# PSA-425402. Commercialon Premium Modular Adhesive is non toxic, has ultra-low odor and is antimicrobial in the dry state.

OPTIONAL:  
TileTabs®

TECHNOLOGIES

ProTex® Anti-Soil Treatment

ProTex is a proprietary chemical technology that is applied and bonded to the pile fiber to impede soiling and to improve cleanability. It is standard on all J+J Flooring Group products. ProTex works similarly to the technology used in nonstick cookware by lowering the surface energy of the fibers which increases soil release properties. Very small soil particles cause carpet to appear dull. Thanks to ProTex, small soil particles are effectively removed by vacuuming or wet cleaning.

OPTIONAL:  
ProSept® Antimicrobial  
Sentir® Advanced Odor-Blocking Technology

corporate programs



Green Circle - Zero Waste to Land-fill Operations Certification

We are proudly certified as a Zero Waste to Landfill manufacturer by GreenCircle Certified, LLC., a prominent third-party certifier of environmental claims. We are the first commercial flooring manufacturer in the United States to achieve this landfill free status and the first company in the industry to have its waste diversion efforts audited and verified by a recognized, third-party certifier.

To learn more about zero waste or our other initiatives see our sustainability progress report online at [jjfloors.com/sustainability](http://jjfloors.com/sustainability)



We're on it.  
The J+J Flooring Group Premium Customer Experience.

Our Premium Customer Experience is a carefully crafted process by which we guarantee that our customers will get the products, services and the reliability they expect from us.

To learn more visit:  
[jjfloors.com/customer-experience/](http://jjfloors.com/customer-experience/)

©2018 J&J Flooring Group, LLC - This unique design is protected under the U.S. Copyright Act of 1976. Any unauthorized copying or duplication of this design constitutes copyright infringement in violation of federal law. Due to the unique visual characteristics of modular carpets, pattern repeats and pattern run-off seams may appear more noticeable than in broadloom carpets. Such visual characteristics do not constitute a manufacturing defect, and as such, should be considered when selecting modular carpet and its installation.

These photographs are representations of the installation for this modular product. Your modular installation may look different than these photos depending upon individual tile placement, lighting, and overall space layout, including furnishings. Final tile placement and the resulting visual is thus the customer's, and not J+J Flooring Group's responsibility.



specifications

style	zenith 7716 modular
construction	multi-level tip sheared loop
fiber type	100% Encore® SD Ultima® Nylon with recycled content
dye method	solution
ounce weight	36 oz/sq yd (1220.60 grams/m²)
gauge	1/10 (3.94 rows/cm)
backing	Nexus® modular
size	12" x 48" (30.48 cm x 122 cm)
pattern repeat	n/a
total thickness (nominal average)	0.312 inches (0.79 cm)
special technology	ProTex® anti-soil treatment
optional special technologies	ProSept® antimicrobial Sentir® advanced odor blocking treatment
physical testing	flooring radiant panel (class 1) pill test – (passes) smoke density (less than 450 flaming) static generation –(less than 3.0 kv) ADA compliance (compliant for accessible routes)
warranties	lifetime fiber performance for wear lifetime fiber performance for static lifetime stain removal lifetime colorfastness to light and atmospheric contaminants lifetime for tuft bind strength (edge ravel, yarn pulls, zippering) lifetime against delamination lifetime dimensional stability

modular installation methods



ashlar



basketweave



herringbone



parquet





## FLOORING GROUP

A DIVISION OF ENGINEERED FLOORS

[jjflooring.com](http://jjflooring.com)

P.O. Box 1287  
Dalton, GA 30722  
p 800 241 4586  
f 706 275 4433

carpet | lvt | **kinetex**