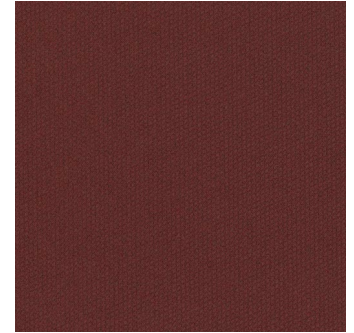


## Propel II Plank | 1817 on Polyester Felt Cushion

Propel II is a solid, sophisticated tweed-like visual is achieved with moresque colored yarns.

Manufacturer/Brand	J+J Flooring Group
MasterFormat Number	09 68 13 Tile Carpeting



### Product Attributes

Pre-consumer Recycled Content	0%
Post-consumer Recycled Content	45%
Total Recycled Content	45%
No Added Urea Formaldehyde	(NAUF compliant)
Recyclable	100%
PFC Free	
Low-Emitting Materials	

### Certifications & Documentation

CDPH v1.1-2010 Compliant	Yes
Flooring	<a href="#">CRI Green Label Plus GLP2690</a>
Kinetex	<a href="#">EPD Kinetex</a>
Health Product Declaration	<a href="#">Kinetex HPD</a>
Declare Certification	<a href="#">Kinetex DECLARE Label</a>
Declare Flyer	<a href="#">Kinetex Declare Flyer</a>
Annual Sustainability Report	<a href="#">Sustainability Report 2018</a>

Manufactured in an ISO 14001:2015 certified facility.