



Installation Methods: Parquet, Herringbone, Basketweave, Brick, Monolithic, Ashlar

Product Specifications

Construction	Multi-Level Tip Sheared Loop
Backing	Nexus® Modular
Dye Method	Solution Dyed
Fiber Type	Encore® SD Ultima® (with recycled content)
Face Weight	28 oz./sy (949 grams/m2)
Pile Density	12873 oz./y3 (477.34 kg/m3)
Pattern Repeat	N/A
Gauge	1/10 (3.94 rows/cm)
Stitches Per Inch	10 stitches/in (3.94 stitches/cm)
Standard Size	18" x 36" approx. (45.72cm x 91.44cm)
Standard Adhesive	Commercialon Premium Modular Adhesive
Optional Adhesive	TileTabs, Nexus Cushion Modular Adhesive, Advance Modular Carpet Cushion Adhesive
Standard Warranties	Nexus Modular Commercialon Adhesive for Modular Carpet & LVT Encore® SD Ultima Fiber
Optional Warranties	Nexus Cushion Modular Nexus FC Cushion Advance Modular Backing Tile Tabs Nexus Cushion Adhesive Advance Modular Adhesive Encore® 100 Fiber

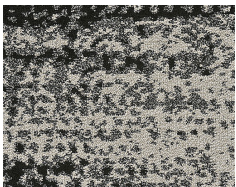
Special Technologies

ProSept® Antimicrobial	Optional
ProTex® Soil Release	Standard
Sentir® Odor-Blocker	Optional

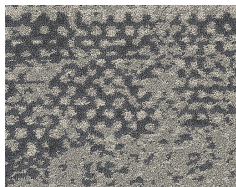
Environmental Specifications & Tests

NSF 140:	Gold Certified
Indoor Air Quality	GLP9716
Total Recycled Content	43.6%
Radiant Panel	Class 1
Smoke Density	Less than 450 flaming (ASTM E 662)
Static Test	Less than 3 kv (AATCC-134)
ADA Compliance	Compliant For Accessible Routes
Pill Test	Yes
Lightfastness	Yes

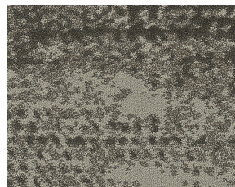
Colorways



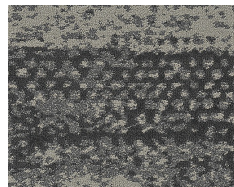
3758 Night Sha...



3759 Seaglass



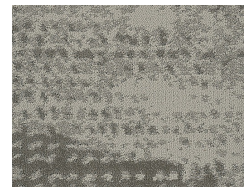
3760 Pecan



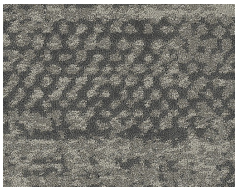
3761 Dark Sage



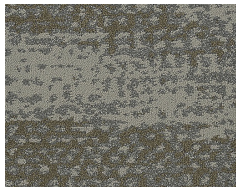
3762 Silver Lin...



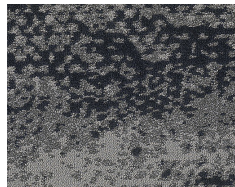
3763 Sand Dun...



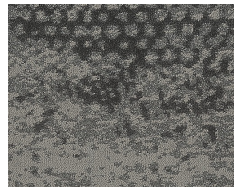
3764 Ashwood



3765 Desert Gl...



3766 Celestial ...



3767 Greystone