



Installation Methods: Parquet, Herringbone, Basketweave, Brick, Ashlar

Product Specifications

Construction	Patterned Loop
Backing	Nexus® Modular
Dye Method	Solution Dyed
Fiber Type	Encore® SD Ultima® (with recycled content)
Face Weight	23 oz./sy (780 grams/m2)
Pile Density	9196 oz./y3 (340.99 kg/m3)
Pattern Repeat	N/A
Gauge	1/10 (3.94 rows/cm)
Stitches Per Inch	10 stitches/in (3.94 stitches/cm)
Standard Size	18" x 36" approx. (45.72cm x 91.44cm)
Standard Adhesive	Commercial Premium Modular Adhesive
Optional Adhesive	TileTabs
Standard Warranties	Nexus Modular Commercial Adhesive for Modular Carpet & LVT Advance Modular Backing Encore® SD Ultima Fiber
Optional Warranties	Nexus Cushion Modular Tile Tabs Nexus Cushion Adhesive Commercial High Moisture Adhesive for Modular Carpet and LVT Nexus FC Cushion Encore® 100 Fiber

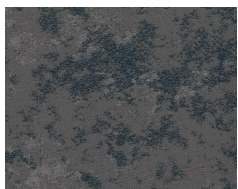
Special Technologies

ProSept® Antimicrobial	Optional
ProTex® Soil Release	Standard
Sentir® Odor-Blocker	Optional

Environmental Specifications & Tests

NSF 140:	Gold Certified
Indoor Air Quality	GLP9716
Total Recycled Content	44.6%
Radiant Panel	Class 1
Smoke Density	Less than 450 flaming (ASTM E 662)
Static Test	Less than 3 kv (AATCC-134)
ADA Compliance	Compliant For Accessible Routes
Pill Test	Yes
Lightfastness	Yes

Colorways



3524 Pisces



3525 Pegasus



3526 Virgo



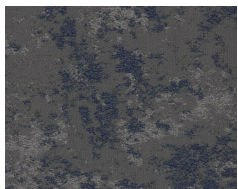
3527 Scorpio



3528 Leo



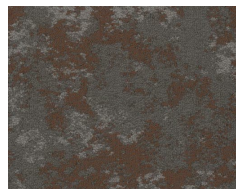
3529 Gemini



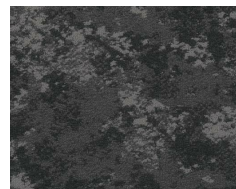
3530 Hydra



3531 Orion



3532 Aries



3533 Perseus