



Product Specifications

Construction	Textile Composite
Backing	Kinetex Felt Cushion
Dye Method	Solution Dyed
Wear Layer	Polyester - Applied Pattern
Pattern Repeat	N/A
Total Weight	4.5 oz - 5.2 oz/ square foot
Total Thickness	.205 inches
Dimensions:	18" x 36" modules
Standard Adhesive	Kinetex Adhesive
Packaging	16 modules per box (72 sq.ft)
Standard Warranties	Kinetex Adhesive Kinetex

Special Technologies

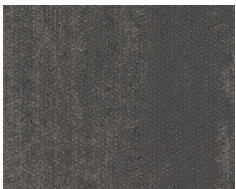
Kinetex ProTex®	Standard
------------------------	----------

Environmental Specifications & Tests

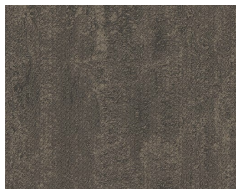
Carbon Footprint:	Carbon Neutral
Recyclability:	100% Closed-loop Recyclable
NSF 140:	Platinum Certified
Indoor Air Quality	GLP2690
Total Recycled Content:	47%
Radiant Panel	Class 1
Smoke Density	Less than 450 flaming (ASTM E 662)
Static Test	Less than 3 kv (AATCC-134)
ADA Compliance	Compliant For Accessible Routes
Pill Test	Yes
Lightfastness	Yes

Installation Methods: Parquet, Herringbone, Basketweave, Brick, Ashlar

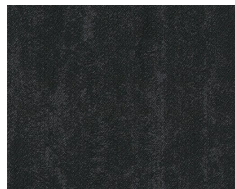
Colorways



3400 Confident



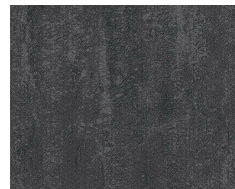
3401 Poised



3402 Smooth



3403 Composed



3405 Urbane