



**Installation Methods:** Brick, Ashlar, Quarter Turn

### Product Specifications

<b>Construction</b>	Patterned Loop
<b>Backing</b>	Nexus® Modular
<b>Dye Method</b>	Solution Dyed
<b>Fiber Type</b>	Encore® SD Ultima® (with recycled content)
<b>Face Weight</b>	23 oz./sy (780 grams/m2)
<b>Pile Density</b>	10992 oz./y3 (407.59 kg/m3)
<b>Pattern Repeat</b>	N/A
<b>Gauge</b>	1/12 (4.72 rows/cm)
<b>Stitches Per Inch</b>	10 stitches/in (3.94 stitches/cm)
<b>Standard Size</b>	24" x 24" approx. (60.96cm x 60.96cm)
<b>Standard Adhesive</b>	Commercial Premium Modular Adhesive
<b>Optional Adhesive</b>	TileTabs
<b>Standard Warranties</b>	<b>Nexus Modular Commercial Adhesive for Modular Carpet &amp; LVT Encore® SD Ultima Fiber</b>
<b>Optional Warranties</b>	<b>Nexus Cushion Modular Nexus FC Cushion Advance Modular Backing Tile Tabs Encore® 100 Fiber</b>

### Special Technologies

<b>ProSept® Antimicrobial</b>	Optional
<b>ProTex® Soil Release</b>	Standard
<b>Sentir® Odor-Blocker</b>	Optional

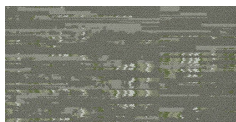
### Environmental Specifications & Tests

<b>NSF 140:</b>	Gold Certified
<b>Indoor Air Quality</b>	GLP9716
<b>Total Recycled Content</b>	44.6%
<b>Radiant Panel</b>	Class 1
<b>Smoke Density</b>	Less than 450 flaming (ASTM E 662)
<b>Static Test</b>	Less than 3 kv (AATCC-134)
<b>ADA Compliance</b>	Compliant For Accessible Routes
<b>Pill Test</b>	Yes
<b>Lightfastness</b>	Yes

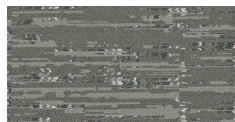
### Colorways



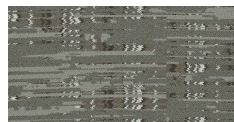
3768 Solstice



3769 Solstice G...



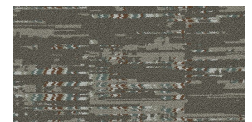
3770 Solstice V...



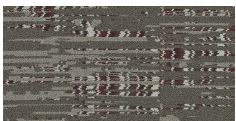
3771 Solstice A...



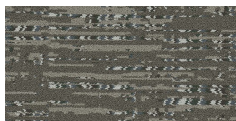
3772 Horizon



3773 Horizon M...



3774 Horizon D...



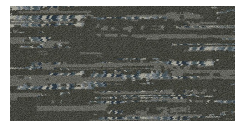
3775 Horizon V...



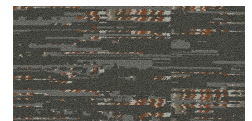
3776 Meridian



3777 Meridian ...



3778 Meridian ...



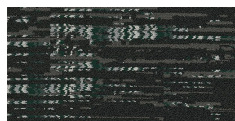
3779 Meridian ...



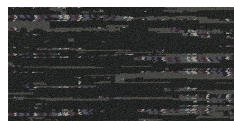
3780 Eclipse



3781 Eclipse C...



3782 Eclipse E...



3783 Eclipse P...