



Product Specifications

Construction	Tip Sheared Patterned Loop
Backing	PremierBac® Plus
Dye Method	Solution Dyed
Fiber Type	Encore® SD Ultima® (with recycled content)
Face Weight	26 oz./sy (882 grams/m2)
Pile Density	7650 oz./y3 (283.67 kg/m3)
Pattern Repeat	72.00" (w) x 55.00" (l) approx. (182.88cm x 139.70cm)
Gauge	1/12 (4.72 rows/cm)
Stitches Per Inch	10.33 stitches/in (4.07 stitches/cm)
Standard Width	12 ft 3.66 m
Standard Adhesive	Commercialon Premium Carpet Adhesive
Standard Warranties	PremierBac Plus Commercialon Premium Broadloom Adhesive Encore® SD Ultima Fiber
Optional Warranties	Endure Plus TitanBac Plus Encore® 100 Fiber

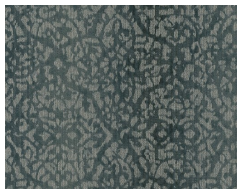
Special Technologies

ProSept® Antimicrobial	Standard
ProTex® Soil Release	Standard
Sentir® Odor-Blocker	Optional

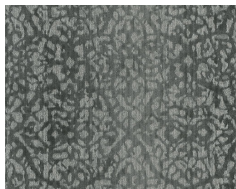
Environmental Specifications & Tests

NSF 140:	Gold Certified
Total Recycled Content	33.4%
Radiant Panel	Class 1
Smoke Density	Less than 450 flaming (ASTM E 662)
Static Test	Less than 3 kv (AATCC-134)
ADA Compliance	Compliant For Accessible Routes
Pill Test	Yes
Lightfastness	Yes

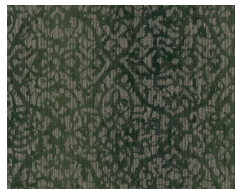
Colorways



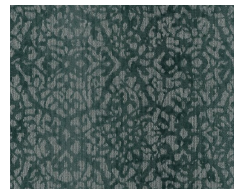
3228 Sky



3229 Soft Grey



3230 Pine



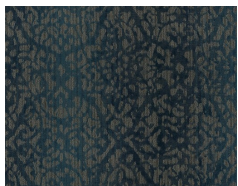
3231 Teal



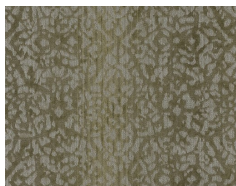
3232 Coffee



3233 Terra



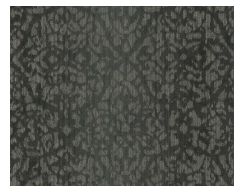
3234 Sailor



3235 Meadowla...



3236 Sandstone



3237 Smoke