



**Installation Methods:** Brick, Monolithic, Ashlar

Product Specifications

<b>Construction</b>	Tip Sheared Patterned Loop
<b>Backing</b>	Nexus® Modular
<b>Dye Method</b>	Solution Dyed
<b>Fiber Type</b>	Encore® SD Ultima® (with recycled content)
<b>Face Weight</b>	26 oz./sy (882 grams/m2)
<b>Pile Density</b>	7514 oz./y3 (278.62 kg/m3)
<b>Pattern Repeat</b>	N/A
<b>Gauge</b>	1/12 (4.72 rows/cm)
<b>Stitches Per Inch</b>	10.33 stitches/in (4.07 stitches/cm)
<b>Standard Size</b>	24" x 24" approx. (60.96cm x 60.96cm)
<b>Standard Adhesive</b>	Commercialon Premium Modular Adhesive
<b>Optional Adhesive</b>	TileTabs, Advance Modular Carpet   Cushion Adhesive, Nexus Cushion Modular Adhesive
<b>Standard Warranties</b>	<b>Nexus Modular Commercialon Adhesive for Modular Carpet &amp; LVT Encore® SD Ultima Fiber</b>
<b>Optional Warranties</b>	<b>Nexus Cushion Modular Nexus FC Cushion Advance Modular Backing Tile Tabs Nexus Cushion Adhesive Advance Modular Adhesive Encore® 100 Fiber</b>

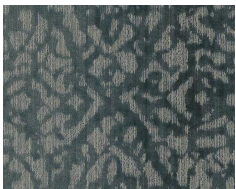
Special Technologies

<b>ProSept® Antimicrobial</b>	Standard
<b>ProTex® Soil Release</b>	Standard
<b>Sentir® Odor-Blocker</b>	Optional

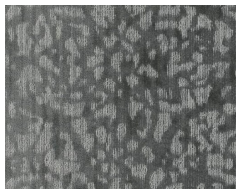
Environmental Specifications & Tests

<b>NSF 140:</b>	Gold Certified
<b>Indoor Air Quality</b>	GLP9716
<b>Total Recycled Content</b>	44%
<b>Radiant Panel</b>	Class 1
<b>Smoke Density</b>	Less than 450 flaming (ASTM E 662)
<b>Static Test</b>	Less than 3 kv (AATCC-134)
<b>ADA Compliance</b>	Compliant For Accessible Routes
<b>Pill Test</b>	Yes
<b>Lightfastness</b>	Yes

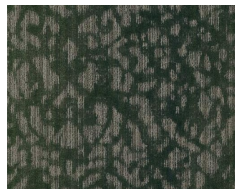
Colorways



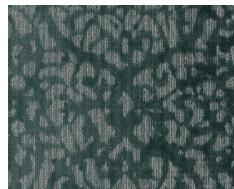
3228 Sky



3229 Soft Grey



3230 Pine



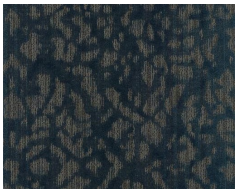
3231 Teal



3232 Coffee



3233 Terra



3234 Sailor



3235 Meadowla...



3236 Sandstone



3237 Smoke