



Installation Methods: Parquet, Herringbone, Basketweave, Ashlar

Product Specifications

Construction	Multi-Level Tip Sheared Loop
Backing	Nexus® Modular
Dye Method	Solution/Yarn Dyed
Fiber Type	Encore® BCF (with recycled content)
Face Weight	36 oz./sy (1221 grams/m2)
Pile Density	7081 oz./y3 (262.57 kg/m3)
Pattern Repeat	N/A
Gauge	1/10 (3.94 rows/cm)
Stitches Per Inch	12 stitches/in (4.72 stitches/cm)
Standard Size	12" x 48" approx. (30.48cm x 121.92cm)
Standard Adhesive	Commercialon Premium Modular Adhesive
Optional Adhesive	TileTabs, Advance Modular Carpet Cushion Adhesive, Nexus Cushion Modular Adhesive
Standard Warranties	Nexus Modular Commercialon Adhesive for Modular Carpet & LVT Encore® BCF (with ColorLoc Plus)
Optional Warranties	Nexus Cushion Modular Nexus FC Cushion Advance Modular Backing Tile Tabs Nexus Cushion Adhesive Advance Modular Adhesive Encore® 100 Fiber

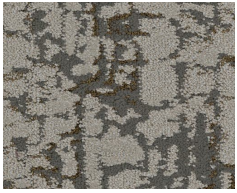
Special Technologies

ColorLoc® Plus	Standard
Colorloc® Plus	Standard
ProSept® Antimicrobial	Optional
ProTex® Soil Release	Standard
Sentir® Odor-Blocker	Optional

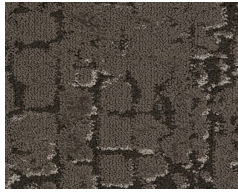
Environmental Specifications & Tests

NSF 140:	Gold Certified
Indoor Air Quality	GLP9716
Total Recycled Content	42.2%
Radiant Panel	Class 1
Smoke Density	Less than 450 flaming (ASTM E 662)
Static Test	Less than 3 kv (AATCC-134)
ADA Compliance	Compliant For Accessible Routes
Pill Test	Yes
Lightfastness	Yes

Colorways



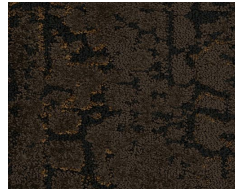
2480 Ash



2481 Fume



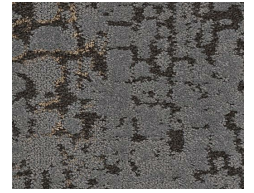
2482 Kindle



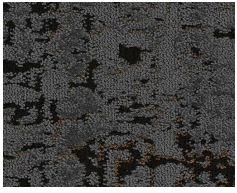
2483 Combust



2484 Cinder



2485 Smoke



2486 Blaze



2487 Torch



2488 Ignite



2489 Ember

www.jjflooringgroup.com