



Product Specifications

<b>Construction</b>	Textured Patterned Loop
<b>Backing</b>	PremierBac® Plus (A)
<b>Dye Method</b>	Solution Dyed
<b>Fiber Type</b>	Encore® SD Ultima® (with recycled content)
<b>Face Weight</b>	16 oz./sy (543 grams/m2)
<b>Pile Density</b>	5612 oz./y3 (208.10 kg/m3)
<b>Pattern Repeat</b>	36.00" (w) x 21.00" (l) approx. (91.44cm x 53.34cm)
<b>Gauge</b>	1/12 (4.72 rows/cm)
<b>Stitches Per Inch</b>	10 stitches/in (3.94 stitches/cm)
<b>Standard Width</b>	12 ft 3.66 m
<b>Standard Adhesive</b>	Commercialon Premium Carpet Adhesive
<b>Standard Warranties</b>	<b>PremierBac Plus</b> <b>Encore® SD Ultima Fiber</b>
<b>Optional Warranties</b>	<b>Endure Plus</b> <b>TitanBac Plus</b> <b>Encore® 100 Fiber</b>

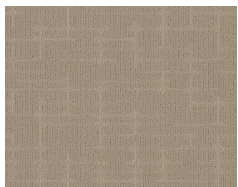
Special Technologies

<b>ProSept® Antimicrobial</b>	Optional
<b>ProTex® Soil Release</b>	Standard
<b>Sentir® Odor-Blocker</b>	Optional

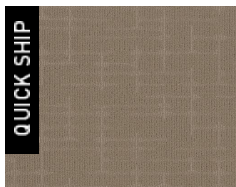
Environmental Specifications & Tests

<b>NSF 140:</b>	Gold Certified
<b>Indoor Air Quality</b>	GLP5055
<b>Total Recycled Content</b>	34.85%
<b>Radiant Panel</b>	Class 1
<b>Smoke Density</b>	Less than 450 flaming (ASTM E 662)
<b>Static Test</b>	Less than 3 kv (AATCC-134)
<b>ADA Compliance</b>	Compliant For Accessible Routes
<b>Pill Test</b>	Yes
<b>Lightfastness</b>	Yes

Colorways



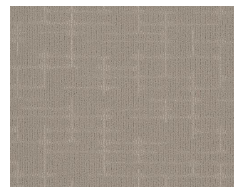
1751 Rhythm



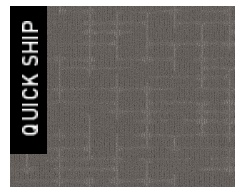
1752 Pitch



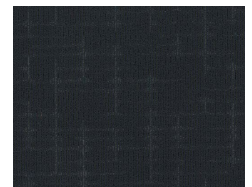
1753 Key



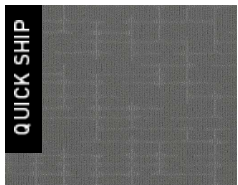
1754 Chord



1755 Duet



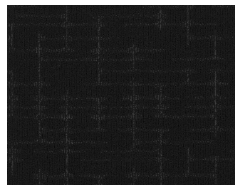
1756 Prelude



1757 Minuet



1758 Finale



1759 Major