



Product Specifications

Construction	Direct Digital Print & Emboss SPC
Backing	DLVT Attached Cushion
Wear Layer	Equivalent to 20 mil
Attached Pad	1.0 mm XPO
Locking Mechanism	One2Click®
Thickness	5mm
Finish / Coating	Evertuff Clearcoat®
Pattern	35 Unique Planks
Dimensions:	7" x 48" approx. (17.78cm x 121.92cm)
Backing Class	Commercial Grade
Commercial Traffic	Light Commercial
Standard Warranties	Rigid Core

Packaging

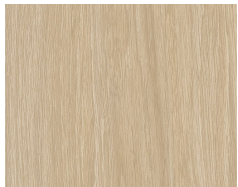
Sq.ft. per piece / carton	2.22 / 22.17
Weight per piece / carton	3.75 (lbs) / 37.51 (lbs)
Pieces per box	10
Boxes per pallet	50

Special Technologies

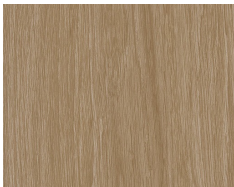
Environmental Specifications & Tests

Indoor Air Quality	FloorScore® Certified
LEED v4	Contributes to IAQ: Low Emitting Materials
End of Life	100% Recyclable
Radiant Panel	Class 1
ADA Compliance	Compliant For Accessible Routes
ASTM F2055 (Size and Tolerance)	Passes
ASTM F386 (Thickness)	Passes
ASTM F1914 (Residual Indentation)	Passes
ASTM F137 (Flexibility)	Passes
ASTM F2199 (Dimensional Stability)	Passes
ASTM F925 (Chemical Resistance)	Passes
ASTM F1514 (Resistance to Heat)	Passes
ASTM F1515 (Resistance to Light)	Passes
ASTM E648 (Critical Radiant Flux)	Passes
ASTM E662 (Optical Smoke Density)	Passes
ASTM C1028 (Slip Resistance)	Passes
ASTM F970 (Static Load)	Passes

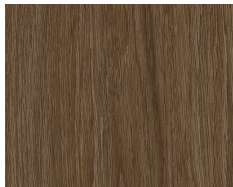
Colorways



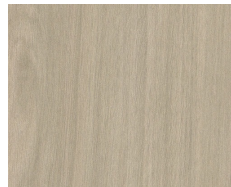
1151 Inspire



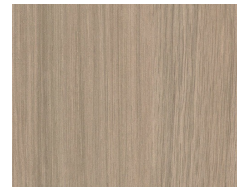
1152 Transition



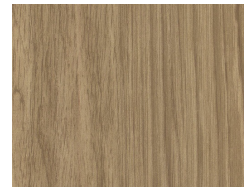
1153 Community



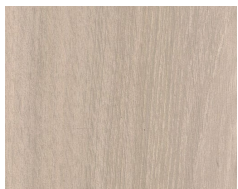
1154 Mix



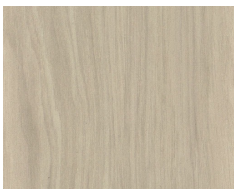
1155 Merge



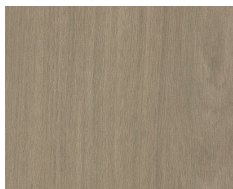
1156 Combine



1157 Network



1158 Culture



1159 Fuse