



Product Specifications

Construction	Patterned Loop
Backing	Nexus® Modular
Dye Method	Solution Dyed
Fiber Type	Encore® SD Ultima® (with recycled content)
Face Weight	20 oz./sy (678 grams/m2)
Pile Density	8160 oz./y3 (302.58 kg/m3)
Pattern Repeat	N/A
Gauge	1/12 (4.72 rows/cm)
Stitches Per Inch	10.66 stitches/in (4.20 stitches/cm)
Standard Size	18" x 36" approx. (45.72cm x 91.44cm)
Standard Adhesive	Commercial Premium Modular Adhesive
Optional Adhesive	TileTabs
Standard Warranties	Nexus Modular Commercial Adhesive for Modular Carpet & LVT Encore® SD Ultima Fiber
Optional Warranties	Nexus Cushion Modular Nexus FC Cushion Advance Modular Backing Tile Tabs Encore® 100 Fiber

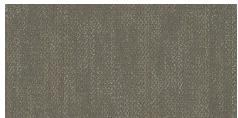
Special Technologies

Environmental Specifications & Tests

NSF 140:	Gold Certified
Indoor Air Quality	GLP9716
Total Recycled Content	45.3%
Radiant Panel	Class 1
Smoke Density	Less than 450 flaming (ASTM E 662)
Static Test	Less than 3 kv (AATCC-134)
ADA Compliance	Compliant For Accessible Routes
Pill Test	Yes
Lightfastness	Yes

Installation Methods: Parquet, Herringbone, Brick, Ashlar

Colorways



3797 Beige Acc...



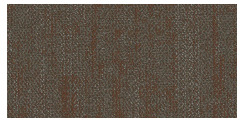
3798 Dark Taup...



3799 Indigo Ac...



3800 Teal Acce...



3801 Rust Acce..



3802 Black Acc...



3803 Almond A...



3804 Green Ac...



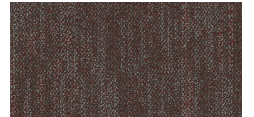
3805 Dark Grey ...



3806 Light Grey...



3807 Bright Blue ...



3808 Wine Acc...



3809 Ember Ac...