



Product Specifications

<b>Construction</b>	Tip Sheared Patterned Loop
<b>Backing</b>	PremierBac® Plus
<b>Dye Method</b>	Solution Dyed
<b>Fiber Type</b>	Encore® SD Ultima® (with recycled content)
<b>Face Weight</b>	27 oz./sy (915 grams/m2)
<b>Pile Density</b>	8124 oz./y3 (301.24 kg/m3)
<b>Pattern Repeat</b>	72.00" (w) x 59.00" (l) approx. (182.88cm x 149.86cm)
<b>Gauge</b>	1/12 (4.72 rows/cm)
<b>Stitches Per Inch</b>	10.67 stitches/in (4.20 stitches/cm)
<b>Standard Width</b>	12 ft 3.66 m
<b>Standard Warranties</b>	<b>PremierBac Plus</b> <b>Encore® SD Ultima Fiber</b>
<b>Optional Warranties</b>	<b>Endure Plus</b> <b>TitanBac Plus</b> <b>Encore® 100 Fiber</b>

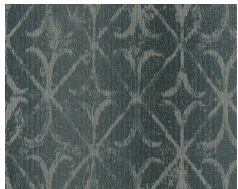
Special Technologies

<b>ProSept® Antimicrobial</b>	Standard
<b>ProTex® Soil Release</b>	Standard
<b>Sentir® Odor-Blocker</b>	Optional

Environmental Specifications & Tests

<b>NSF 140:</b>	Gold Certified
<b>Indoor Air Quality</b>	
<b>Total Recycled Content</b>	48.9%
<b>Radiant Panel</b>	Class 1
<b>Smoke Density</b>	Less than 450 flaming (ASTM E 662)
<b>Static Test</b>	Less than 3 kv (AATCC-134)
<b>ADA Compliance</b>	Compliant For Accessible Routes
<b>Pill Test</b>	Yes
<b>Lightfastness</b>	Yes

Colorways



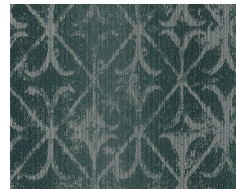
3228 Sky



3229 Soft Grey



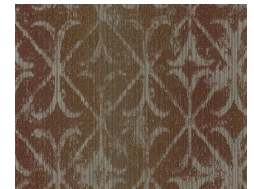
3230 Pine



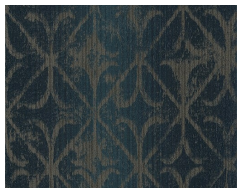
3231 Teal



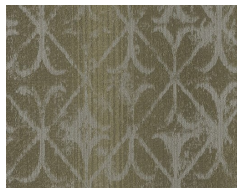
3232 Coffee



3233 Terra



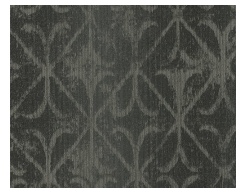
3234 Sailor



3235 Meadowla...



3236 Sandstone



3237 Smoke