

form function imagination

ENHANCING THE EDUCATIONAL EXPERIENCE



(cover) Fletcher Library KINETEX | STRATA
Milliken University MODULAR CARPET | FICTION



an educated approach

For more than 60 years, J+J Flooring has manufactured intelligently crafted and beautifully designed commercial flooring. Our rich legacy informs our approach — creating a suite of products to meet the unique challenges of education environments.

All three of our flooring categories — carpet, LVT and Kinetex — are engineered with a steadfast commitment to design, quality, service, integrity and sustainability.





most likely to succeed

Your flooring is one of the largest investments in your space. It enhances the learning environment, contributing directly to the safety, comfort, and academic achievement of the students and staff who learn, work, and play daily on your campus. At J+J Flooring, we will partner with you and provide a flooring solution that will make the grade.

- ☑ CARPET
- ☑ LVT
- ☑ KINETEX



MADE FOR
THE RIGORS
OF LEARNING



carpet lvt kinetex

Whether it's soft surface, hard surface or Kinetex, J+J offers the most comprehensive suite of flooring solutions tailored for education spaces.

carpet

DESIGN

From broadloom to plank formats, whatever the desired aesthetic, J+J Flooring offers maximum design flexibility.

ACOUSTICS + COMFORT

Compared to typical hard surface, carpet will significantly reduce noise and glare and provides optimal anti-fatigue properties to support teachers who are constantly on their feet.

VALUE

With the lowest life cycle cost of any surface, multiple coordinating collections to hit any budget, and a lifetime warranty, J+J Flooring carpet passes the test!



kinetex

DURABILITY

Exceptional durability (4.0-4.5 TARR Rating)

ACOUSTICS

Stellar ratings in both the Noise Reduction Coefficient (NRC: .30) and Impact Insulation Classification (IIC: 64)

SAFETY

The only wall-to-wall textile floor covering certified by the National Floor Safety Institute (NFSI) as a high traction surface



lvt

WARRANTY

Our comprehensive warranty includes both product performance and non-prorated labor coverage for replacement.

INSTALLATION

Glueless and transition-free installation options are available.

DURABILITY

3 features enhance the durability of our LVT products:

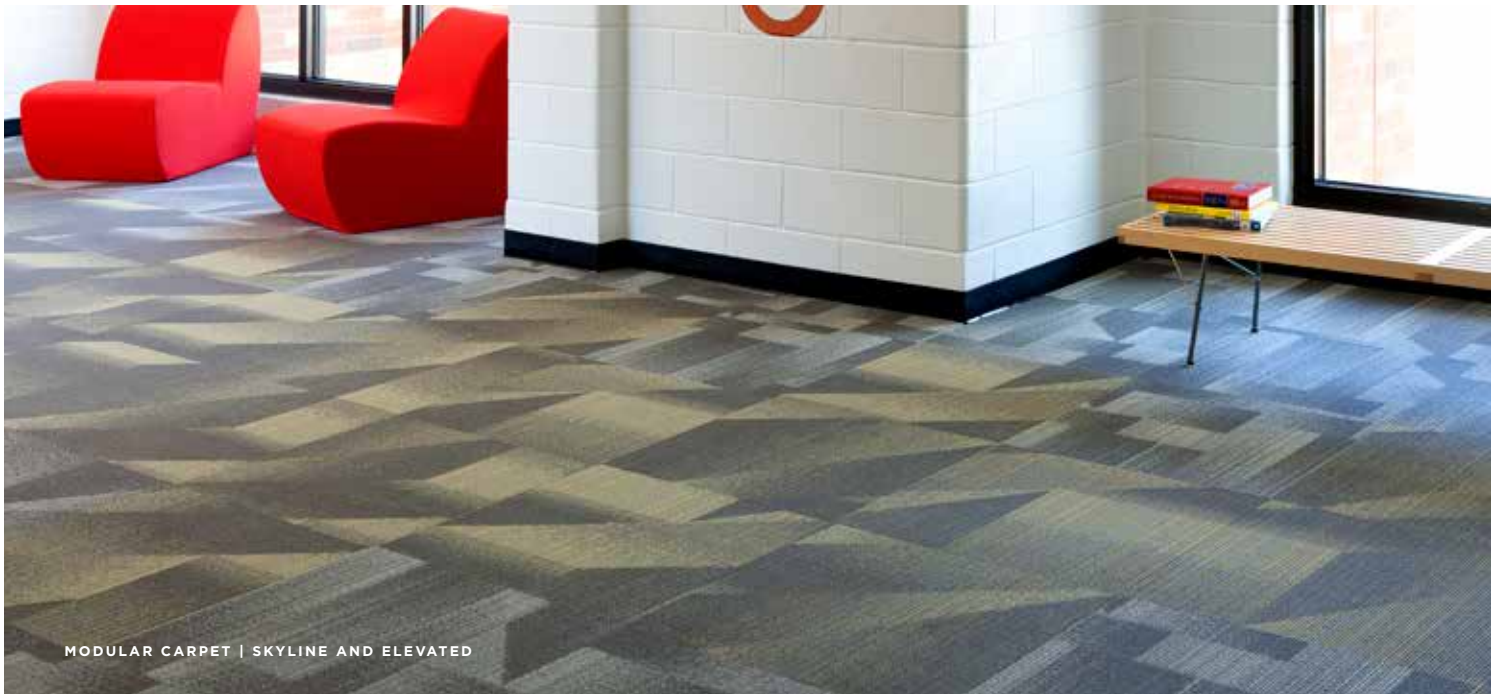
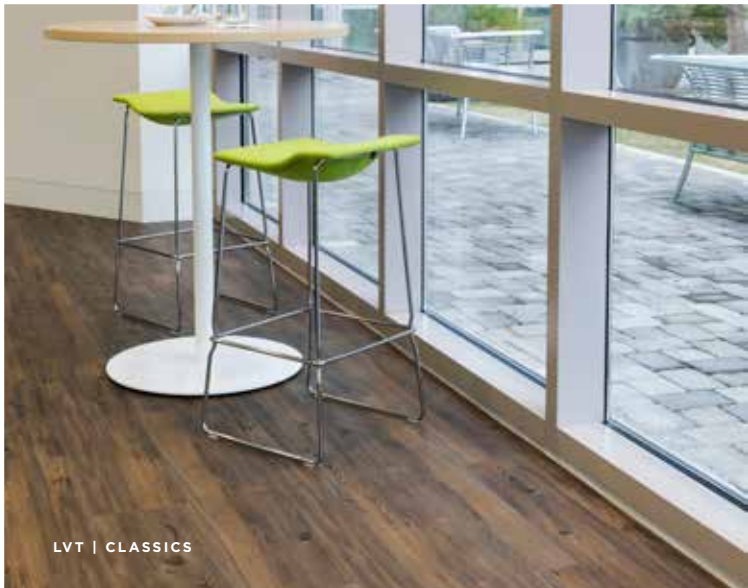
- High vinyl content provides protection against cracking and breakage.
- High-immersion Ceramic Bead UV-cured urethane topcoat provides optimal wear protection in high traffic areas.
- ZPT Antimicrobial adds protection against degradation and discoloration.



solving the equation

Our product solutions and designs are informed by research and data. This Evidence-Based Design approach is the foundation for how our products function in your space. The performance attributes of J+J Flooring products solve the equation — meeting the varied functional needs of each area in the education environment.

- ✓ ACOUSTICS
- ✓ DURABILITY
- ✓ HEALTH
- ✓ COMFORT
- ✓ SAFETY
- ✓ MAINTENANCE
- ✓ TOTAL COST OF OWNERSHIP
- ✓ INSTALLATION



carpet + kinetex

Creating a vibrant and safe community that supports active learning is key in modern education settings. Our carpet and Kinetex products are crafted with this end in mind. With a broad range of colors, patterns and formats to select from, each collection is designed with performance attributes that enhance learning.

made
for the
rigors of
learning

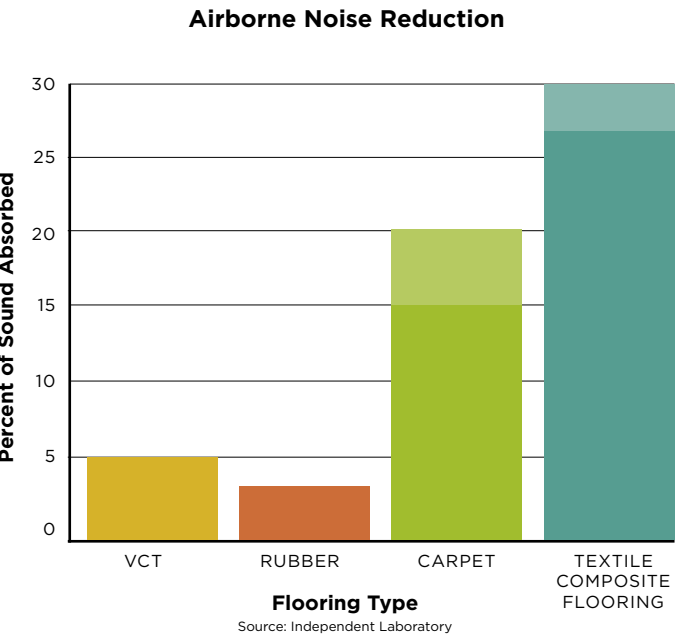
carpet + kinetex



Dalton State College KINETEX | UMBRA II AND UMBRA STRIPE II

ACOUSTICS

The selection of carpet and Kinetex contributes to optimum acoustic performance. Our carpet is engineered to absorb 4 times more sound than hard surface. Kinetex offers one of the highest Noise Reduction Coefficients (NRC: .30) and Impact Insulation Classifications (IIC: 64) of any commercial flooring product. This unparalleled acoustic performance results in dramatic reductions in both airborne and structure borne noise. Its high acoustic properties also effectively promote improved perception and voice recognition, making a school environment more conducive to learning.



DID YOU KNOW?
RESEARCH LINKS GOOD ACOUSTICS TO STUDENT LEARNING AND ACHIEVEMENT. STUDENTS IN CLASSROOMS WITH CARPET SCORE HIGHER ON TESTS.

97.9% OF PRINCIPALS:
Acoustics influence student achievement

81% OF TEACHERS:
A quiet environment with good acoustics has a very strong or somewhat strong impact on student performance

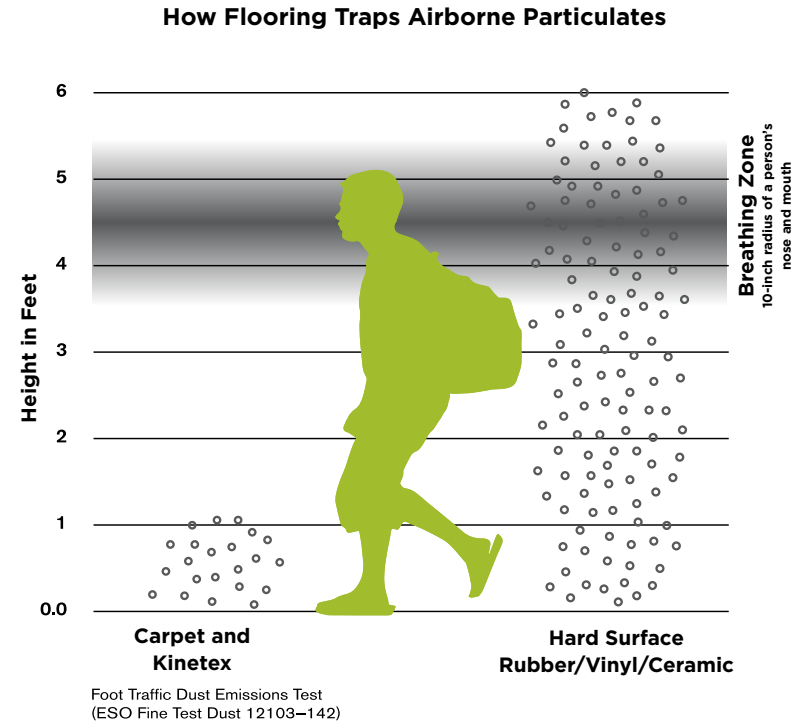
DURABILITY

Kinetex is one of the most thoroughly tested products ever developed. It has withstood over 5 million foot traffic events with minimal wear at a popular Florida-based entertainment venue. **This equates to 52 years of wear in an average classroom.**



HEALTH

Carpet and Kinetex minimize airborne air particulates that trigger allergies and cause infection. It easily surpasses California’s 01350 requirements — the most popular U.S. standard for evaluating and restricting VOC emissions indoors. It’s also easily sanitized and quick to dry, so cleaning Kinetex is quick and easy.



KINETEX | PUT A CORK IN IT



MODULAR CARPET | GENERATION AND INLINE

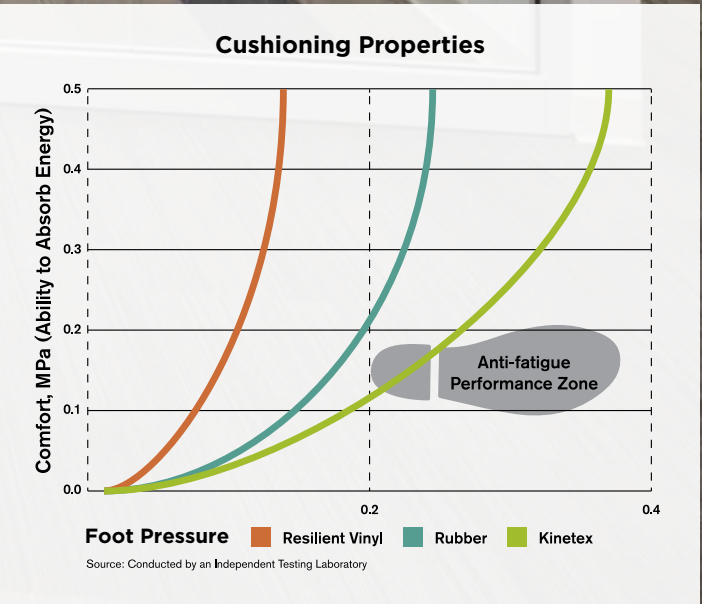
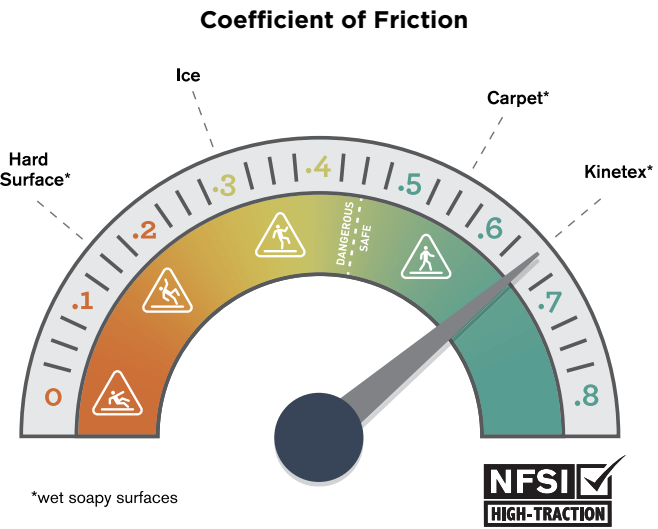
COMFORT

Education communities promote movement. Students and staff are working, walking, playing and standing throughout the space. Carpet and Kinetex have greater potential to absorb energy and reduce repetitive foot stress injuries and other injuries when compared to hard surface. This also creates a more comfortable space for faculty who stand for long periods of time. With its thermal insulation properties, Kinetex also provides a warmer indoor environment.

SAFETY

Carpet and Kinetex provide a secure foundation for all of the occupants of your education facility by improving traction to prevent injuries from slips, trips or falls.

Kinetex’s unique construction creates one of the most slip-resistant flooring surfaces ever tested, wet or dry. In fact, it is the only wall-to-wall floor covering certified as a high-traction surface by the National Floor Safety Institute.



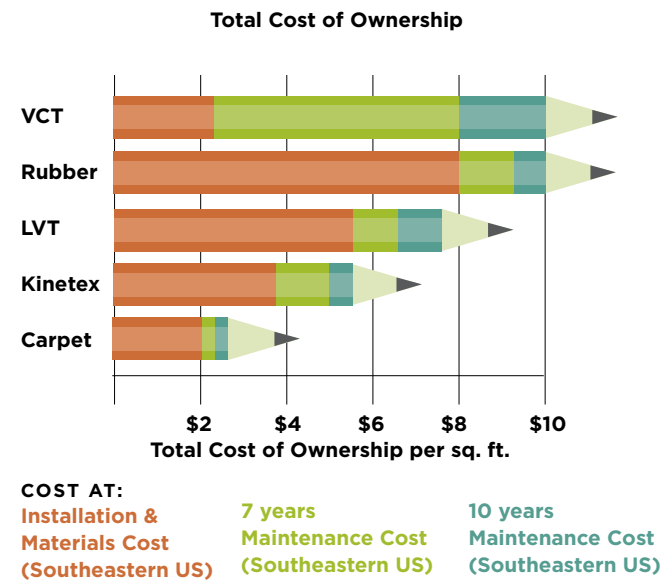
MAINTENANCE

The flooring in your education environment is an investment that contributes directly to the well-being of your students and staff. We partner with you to keep that investment looking good for years to come by understanding the unique challenges and requirements of your facility. We work with you to identify the products that will be the most effective in the space and to provide a detailed maintenance plan — ensuring that your flooring performs at the highest level for years to come.

We have developed proprietary technologies that meet the demands of your space. These enhancements are designed to help your flooring resist stains and soiling and improve cleanability.

TOTAL COST OF OWNERSHIP

Modular carpet and Kinetex have significant cost advantages over hard surface floors, a critical factor at a time when schools are operating on greatly reduced budgets. The life cycle cost of ownership — defined as the cost of flooring materials, installation and maintenance over a seven to 10-year period — is significantly less for both Kinetex and carpet than hard surface flooring.



INSTALLATION SOLUTIONS

TileTabs® (modular carpet)

Our high-tack TileTabs for modular carpet allow installation and replacement of flooring without the use of spread adhesives. With our TileTabs, simply peel, place and press. They are odorless, glue-VOC-free, and eliminate drying time, making your space available for immediate traffic and occupancy.



PEEL



PLACE



PRESS

Kinetex Adhesive

Kinetex Adhesive is formulated for Kinetex textile composite flooring products and is built to bond the textile composite to the properly prepared substrates for the life of the installation. Products with Kinetex Adhesive will perform in elevated RH slabs up to 100%.

PreFix® (Peel + Stick)

PreFix includes a release liner that easily peels away to reveal pre-applied adhesive that securely anchors the Kinetex module in place. Products with PreFix will perform in elevated RH slabs up to 100%, allowing the flooring to be installed without costly moisture mitigation. PreFix offers a quick installation system and can be added to any Kinetex product as an optional adhesive.



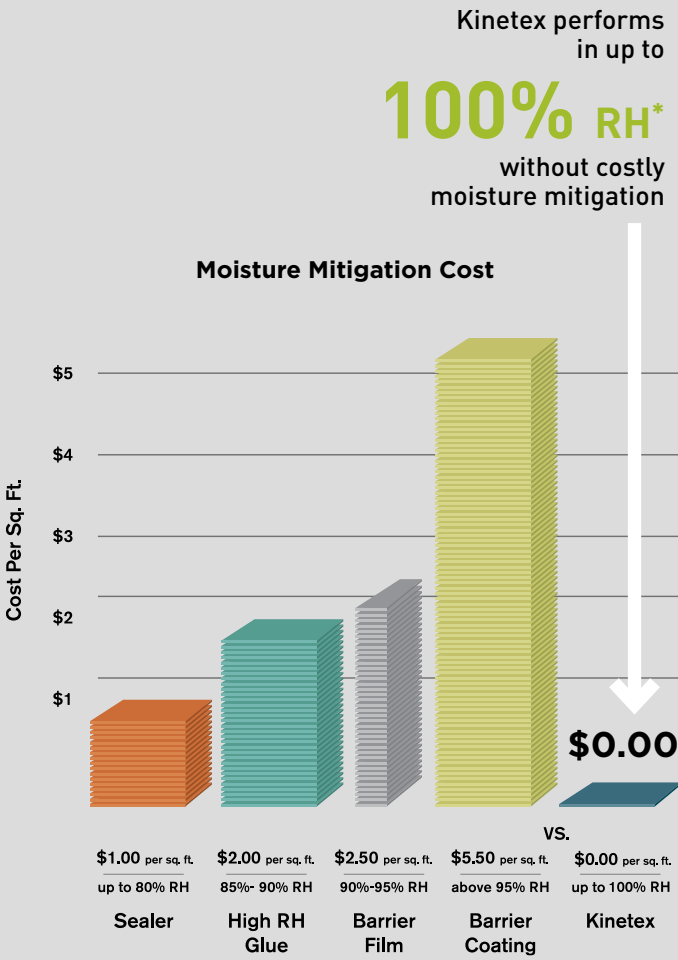
PEEL



STICK

KINETEX® MOISTURE TOLERANCE

Concrete substrates can release excessive moisture and destroy floor covering systems. Costly moisture mitigation isn't necessary with Kinetex. Its breathable nature allows moisture to pass through its backing, instead of trapping it underneath. This allows for quick drying, minimizing downtime from wet extraction cleaning and spills. Kinetex will perform in elevated RH slabs up to 100%.



**Must be installed per manufacturer-approved instructions.*



Fletcher Library KINETEX | STRATA



lvt

Luxury Vinyl Tile (LVT) is one of the most practical and durable flooring choices in the market. It provides a wide range of aesthetics, ease of installation and maintenance and a low overall total cost of ownership.

J+J Flooring LVT is offered in a variety of formats and aesthetics, from the traditional to modern, for maximum design flexibility. Designed to coordinate seamlessly with our carpet and Kinetex®, our LVT is available in 3mm and 5mm constructions.

DURABILITY

When it comes to performance, J+J LVT delivers with true, 20-mil commercial wear layer products and a full 10-year commercial warranty, which includes labor.

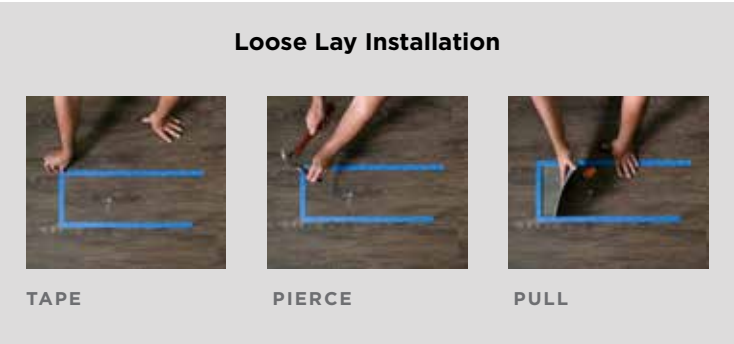
Long-term appearance retention and ease of maintenance are key considerations in LVT selection. Our LVT includes a ceramic bead which is added to the ultraviolet cured urethane clear coat for optimum scratch and scuff resistance. Simple routine sweeping and mopping is all that is needed for maintenance, versus the labor intensive and costly waxing and polishing needed for VCT and other hard surface flooring.



EASE OF INSTALLATION

When installing J+J LVT with carpet, there is no need to worry about multiple adhesives. We have formulated one adhesive to provide a strong and dependable installation for both. For heavy rolling traffic, J+J LVT features the option to wet-set the installation, allowing for a strong and stable adherence and eliminating the need for two-part epoxy.

In addition to offering styles with a 3mm thickness, J+J offers products with a 5mm thickness which transition to carpet and Kinetex without the need of a transition strip. Our 5mm products also have a loose lay installation option with perimeter glue. Benefits of this type of installation are a quick installation that allows for immediate occupancy in the space and ease of replacement.







imagination will take you everywhere

Our portfolio of products is designed for 21st century learning environments. We identify and incorporate the emerging trends influencing today's education communities, resulting in a broad range of patterns, textures and color palettes. These styles can be used in combination to express your school identity and spirit.

Design interweaves art and science, combining creativity with technology to address both aesthetic and practical needs. A well-researched selection of materials address the critical performance needs in demanding education spaces, while promoting a sense of comfort that is essential for thoughtful learning.

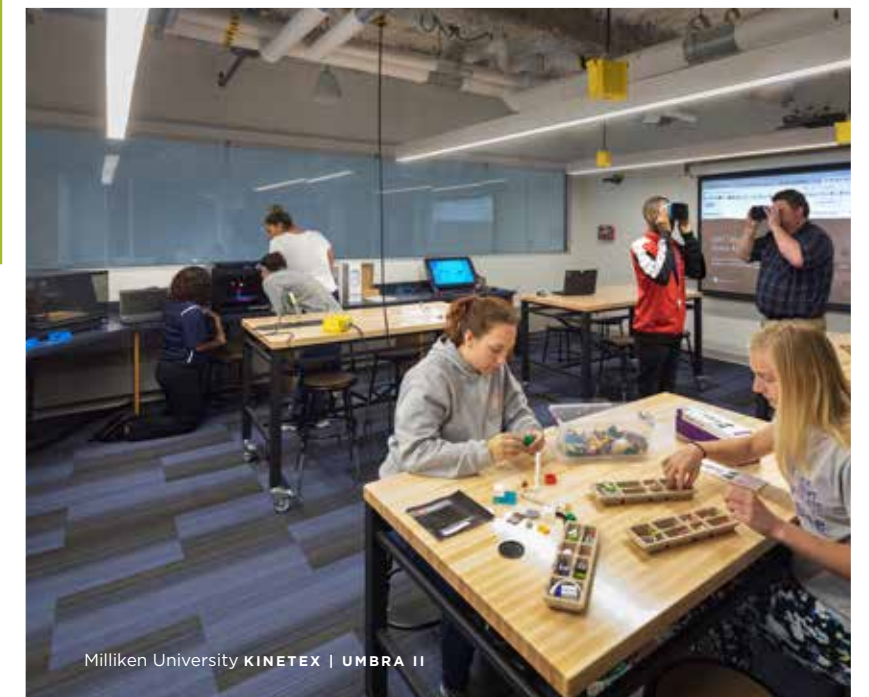


92%

OF TEACHERS THINK CLASSROOM
DESIGN STRONGLY IMPACTS
ACHIEVEMENT

**Environmental factors
of a learning space
can influence...**

- ☑ **ACADEMIC PERFORMANCE**
- ☑ **FACULTY RETENTION**
- ☑ **TEACHING EFFECTIVENESS**
- ☑ **STUDENT ATTENDANCE**
- ☑ **DISCIPLINARY PROBLEMS**
- ☑ **SAFETY AND ERGONOMICS**



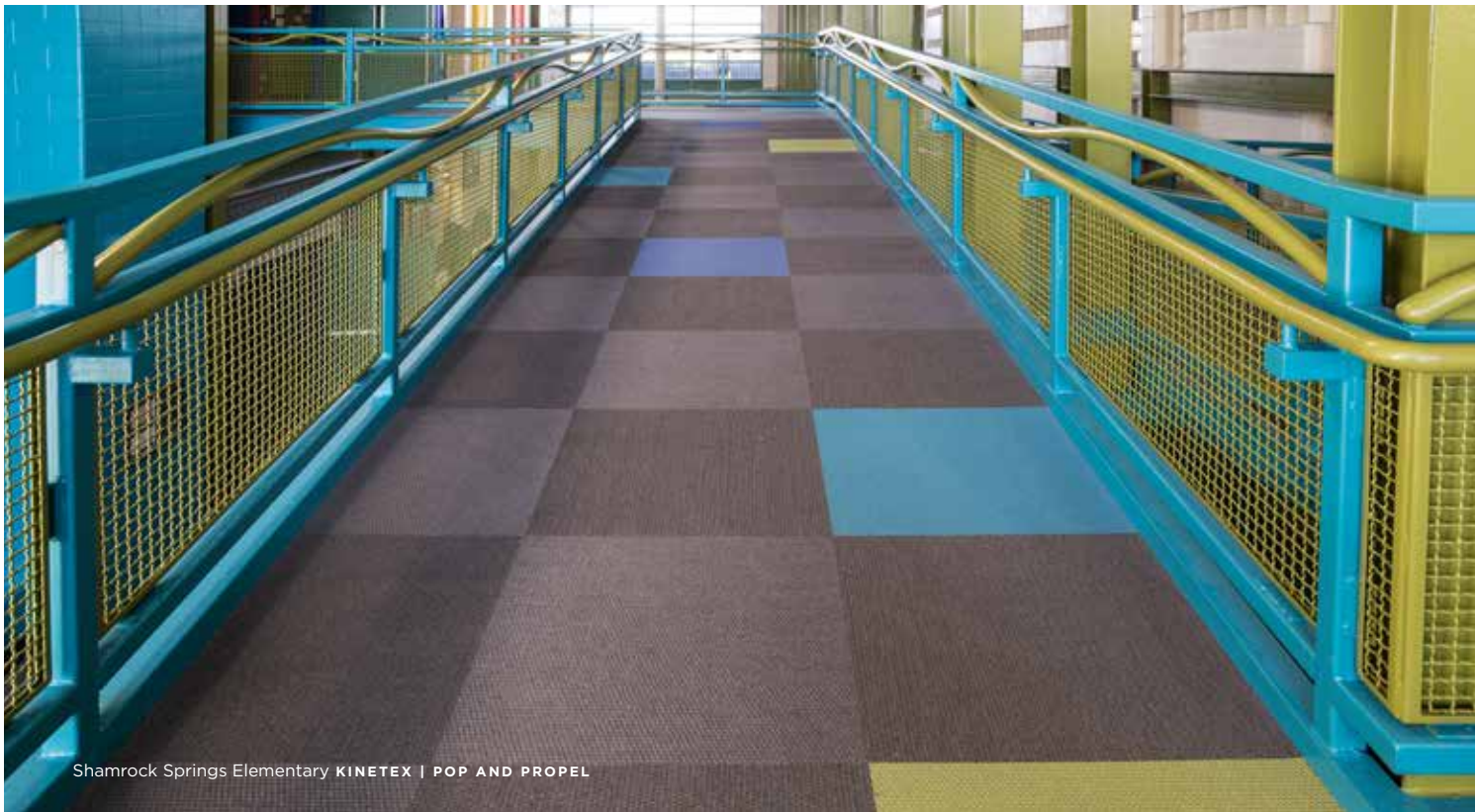




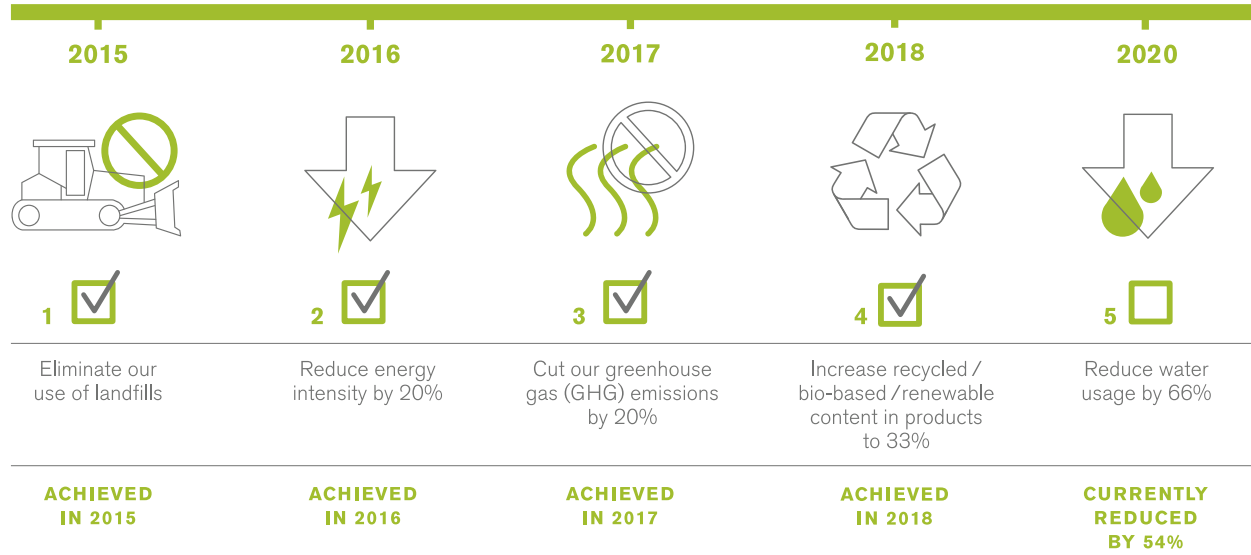
investing for the next generation

J+J Flooring Group is invested in sustainable practices and products, keeping these priorities simple and transparent. Conserve the resources we use, responsibly source the materials we need, and minimize the social and environmental impacts of our products — these are the hallmarks of our sustainability platform. With a vision for the future, J+J has established a set of key environmental performance goals to achieve by 2020. Called our 20/20 Vision, there are six critical targets we are committed to reach.

- + OUR STEADFAST COMMITMENT IN THE PURSUIT OF ZERO WASTE TO LANDFILL HAS EARNED US THE INDUSTRY-LEADING LEVEL OF 95% WASTE DIVERSION CERTIFICATION BY A THIRD-PARTY CERTIFIER.
- + FOCUSED ON TRANSPARENCY WITH EPDS AND HPDS AVAILABLE
- + NSF 140 CERTIFIED PRODUCTS
- + MANUFACTURED IN ISO 14001:2015 CERTIFIED FACILITIES
- + 3RD PARTY VERIFIED DECLARE LABEL FOR ALL KINETEX AND NEXUS PRODUCTS: RED LIST FREE FOR KINETEX PRODUCTS
- + PFAS FREE
- + PHTHALATE FREE



20/20 VISION





jjflooring.com
P.O. Box 2207
Dalton, GA 30722
p 800 241 4586
f 706 275 4433

carpet | lvt | kinetex