

FORM + FINISH

AMORPHOUS / ATMOSPHERIC EMULSION / ORGANIC RAKU





J+J FLOORING GROUP

From our establishment in 1957, we have become one of the oldest exclusive manufacturers of *commercial flooring* in the United States. As one of the largest privately held mills, our **FAMILY-OWNERSHIP** provides a *heritage* of proven performance and expansive industry knowledge. Most importantly, our focus has always been on *people...* ensuring them that our products deliver the highest levels of **BEAUTY**, **PERFORMANCE** and **DEPENDABILITY**.

carpet | lvt | kinetex

[cover] **Amorphous Oxide** and **Blue Kashi**, **Atmospheric Blue Kashi**, monolithic.

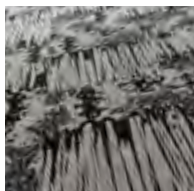
contents



8
AMORPHOUS



16
ATMOSPHERIC



24
EMULSION



32
ORGANIC RAKU



COLORLINE OVERVIEW	40
PRODUCT DETAILS	41
PRODUCT SPECIFICATIONS	42

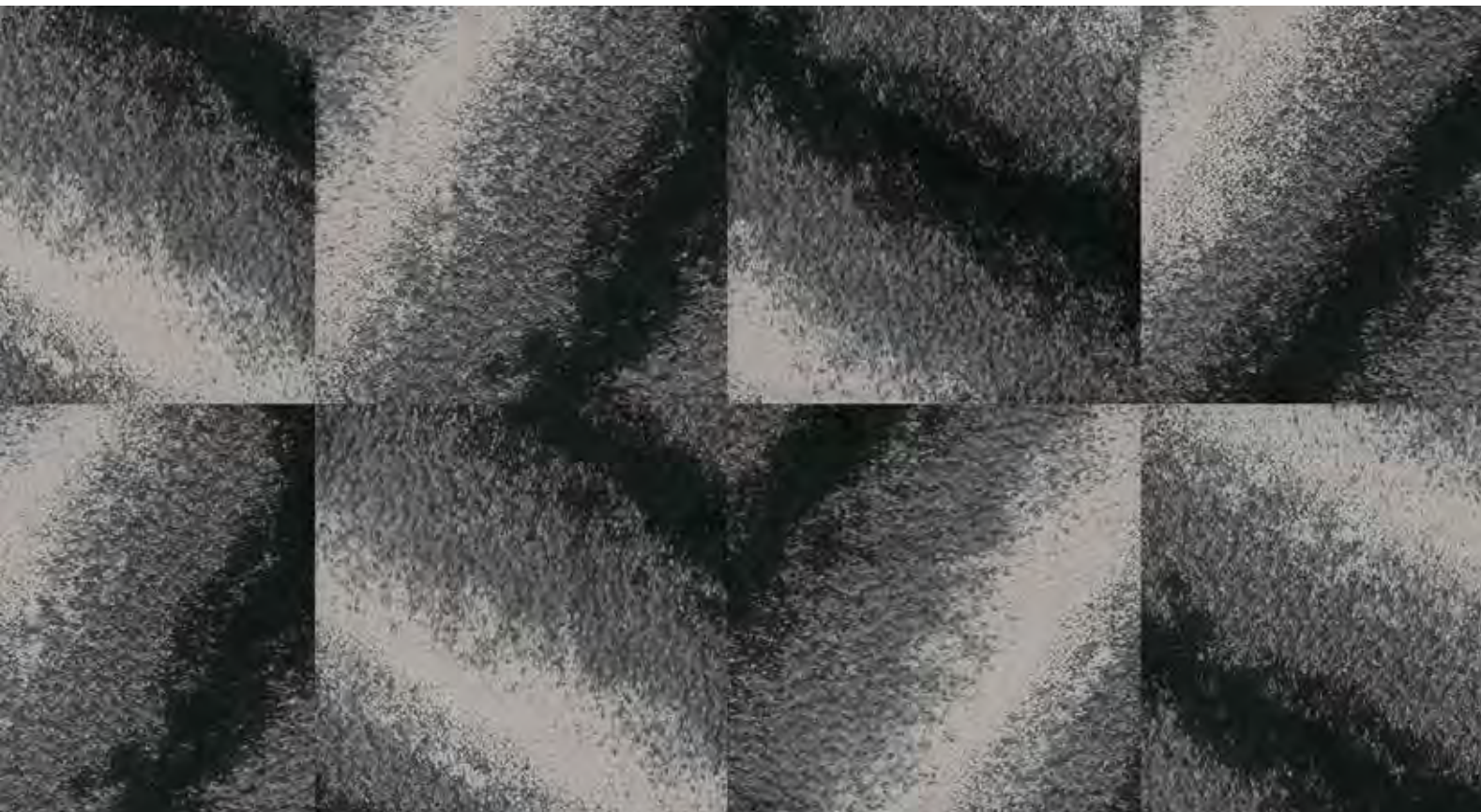
FORM + FINISH

For more than a century, a small studio in Detroit has made clay into ceramic. With careful hands and lightest touch, Pewabic pottery is shaped, thrown and fired. Changing, and then changing again.

But it's the finish that defines the work: an iconic, iridescent glaze that infuses every piece with striking movement and beautiful fluidity, perfect in its imperfections.

Earlier this year, we traveled to the studio, where we became part of the process. Intrigued and inspired, we returned home, asking, can a finish become the start of something new?





amorphous

Drawing on the fluid nature of glaze, Amorphous transitions from neutrals to bolds and back. The graphic pattern imparts a sense of movement that is visually striking and allows for endless installation variations.

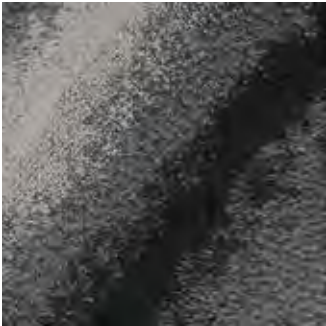
(right) Amorphous *Alkaline*, quarter turn.





SPECIFICATION

style	amorphous 7711 modular
construction	multi-level tip sheared loop
fiber type	Encore® BCF nylon w / ColorLoc® Plus
dye method	solution / yarn dyed
ounce weight	35 oz (1186.7 grams)
gauge	1/10 (3.94 rows/cm)
backing	Nexus® Modular
size	24" x 24" (61 cm x 61 cm)



style 7711
color 2312
glazed



style 7711
color 2313
iron



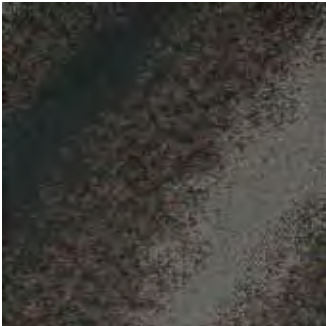
style 7711
color 2314
obsidian



style 7711
color 2315
bisque



style 7711
color 2316
clay



style 7711
color 2317
oxide



style 7711
color 2318
alumina



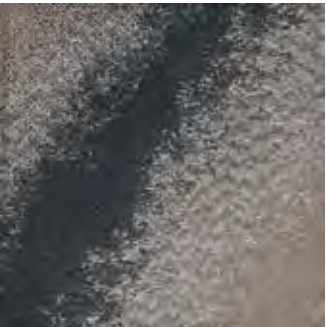
style 7711
color 2319
vitreous



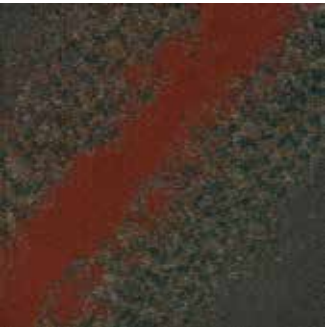
style 7711
color 2320
tarnish



style 7711
color 2321
fresco



style 7711
color 2322
alkaline



style 7711
color 2323
molten

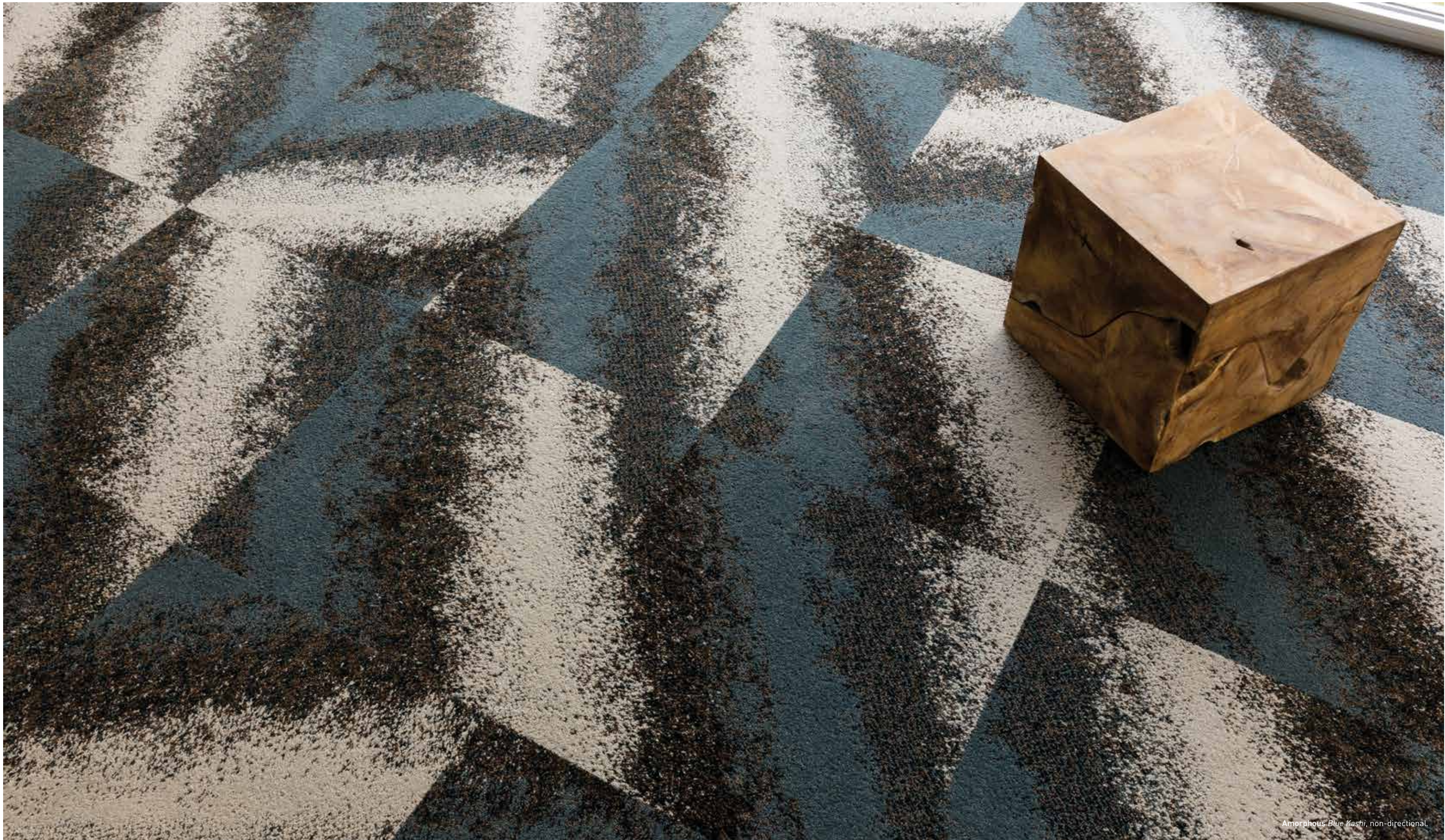


style 7711
color 2324
blue kashi



(above) *Amorphous Oxide* and *Blue Kashi*, *Atmospheric Blue Kashi*, monolithic. (left) *Amorphous Alkaline* and *Fresco*, quarter turn. (below) *Amorphous Glazed*, quarter turn.





Amorphous Blue Kashii, non-directional.



atmospheric

Firing and glazing establish inseparable bonds, shifting from disparity to singularity over time. Atmospheric represents the coalescence of elements that join in harmony to establish a striking aesthetic of textured surface and colored glaze.

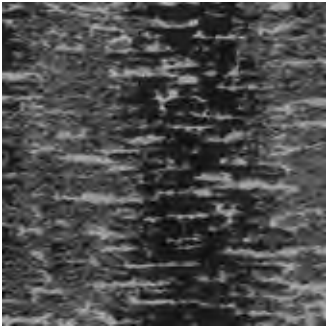
[right] Atmospheric and Amorphous *Fresco*, monolithic.





SPECIFICATION

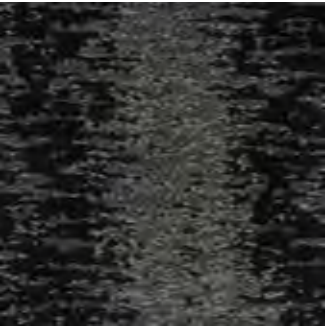
style	atmospheric 7713 modular
construction	multi-level tip sheared loop
fiber type	Encore® BCF nylon w / ColorLoc® Plus
dye method	solution / yarn dyed
ounce weight	35 oz (1186.7 grams)
gauge	1/10 (3.94 rows/cm)
backing	Nexus® Modular
size	24" x 24" {61 cm x 61 cm}



style 7113
color 2312
glazed



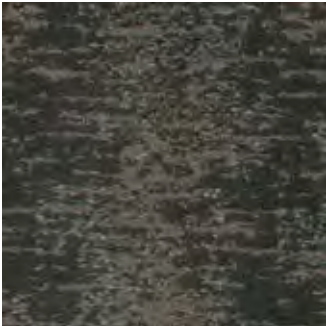
style 7113
color 2313
iron



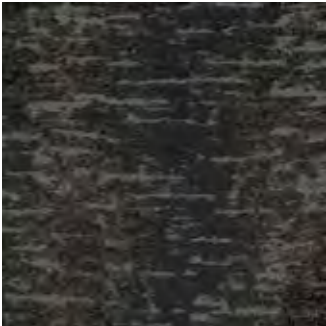
style 7113
color 2314
obsidian



style 7113
color 2315
bisque



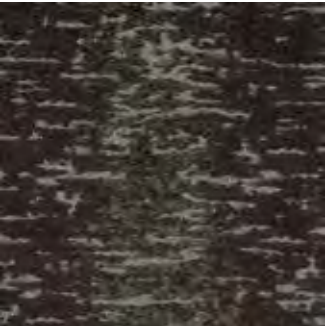
style 7113
color 2316
clay



style 7113
color 2317
oxide



style 7113
color 2318
alumina



style 7113
color 2319
vitreous



style 7113
color 2320
tarnish



style 7113
color 2321
fresco



style 7113
color 2322
alkaline



style 7113
color 2323
molten



style 7113
color 2324
blue kashi



[above] Atmospheric *Fresco*, Emulsion *Alkaline* monolithic, Framework *Anchor*, lvt. [page 21] Atmospheric *Blue Kashi*, monolithic.





Atmospheric *Fresco*, Emulsion *Fresco*, monolithic, Framework *Partition*, lvt.



emulsion

Drips, pulls, and flows create free-form glazing effects. Emulsion renders pattern from the unpredictable nature of movement of glaze.

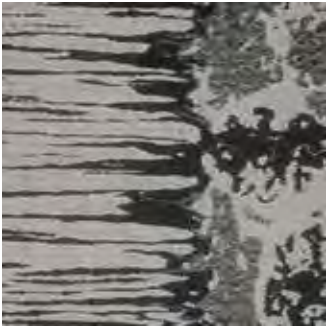
[right] Emulsion *Alkaline*, brick.



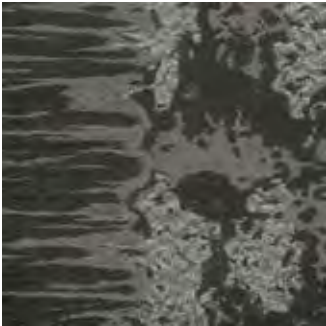


SPECIFICATION

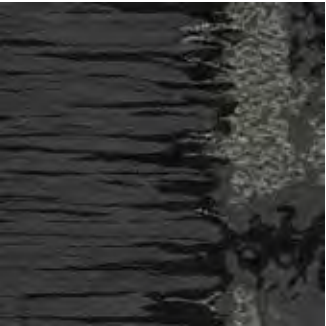
style	emulsion 7712 modular
construction	multi-level tip sheared loop
fiber type	Encore® BCF nylon w / ColorLoc® Plus
dye method	solution / yarn dyed
ounce weight	35 oz (1186.7 grams)
gauge	1/10 (3.94 rows/cm)
backing	Nexus® Modular
size	24" x 24" (61 cm x 61 cm)



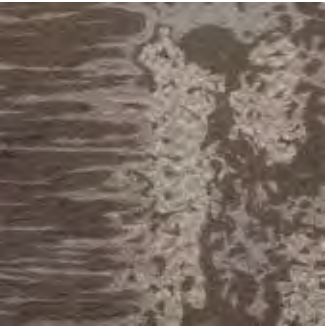
style 7712
color 2312
glazed



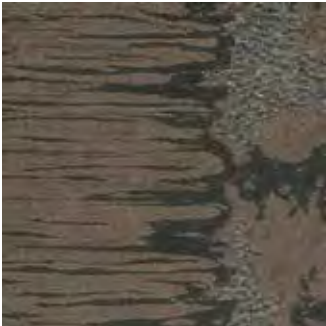
style 7712
color 2313
iron



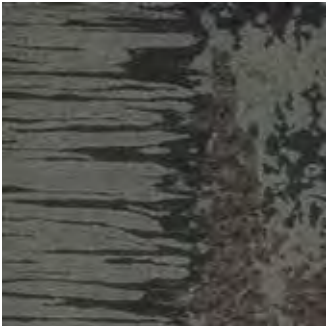
style 7712
color 2314
obsidian



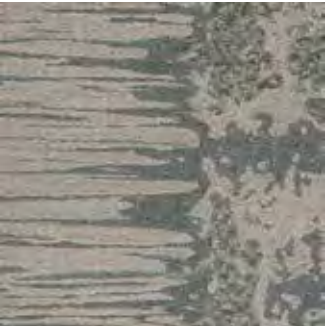
style 7712
color 2315
bisque



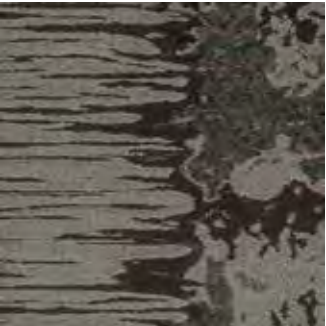
style 7712
color 2316
clay



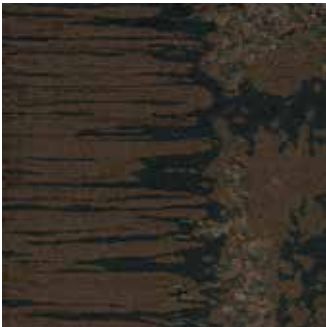
style 7712
color 2317
oxide



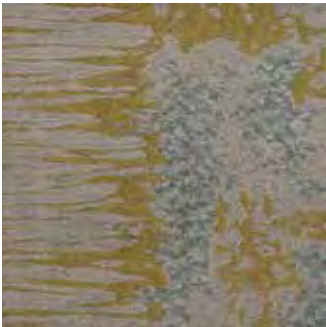
style 7712
color 2318
alumina



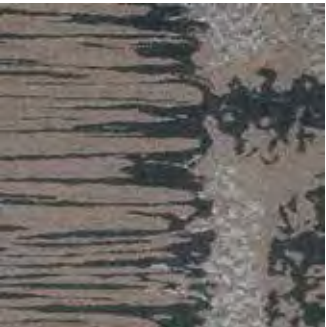
style 7712
color 2319
vitreous



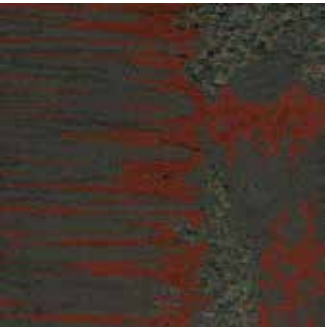
style 7712
color 2320
tarnish



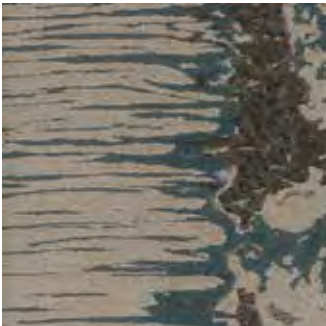
style 7712
color 2321
fresco



style 7712
color 2322
alkaline



style 7712
color 2323
molten

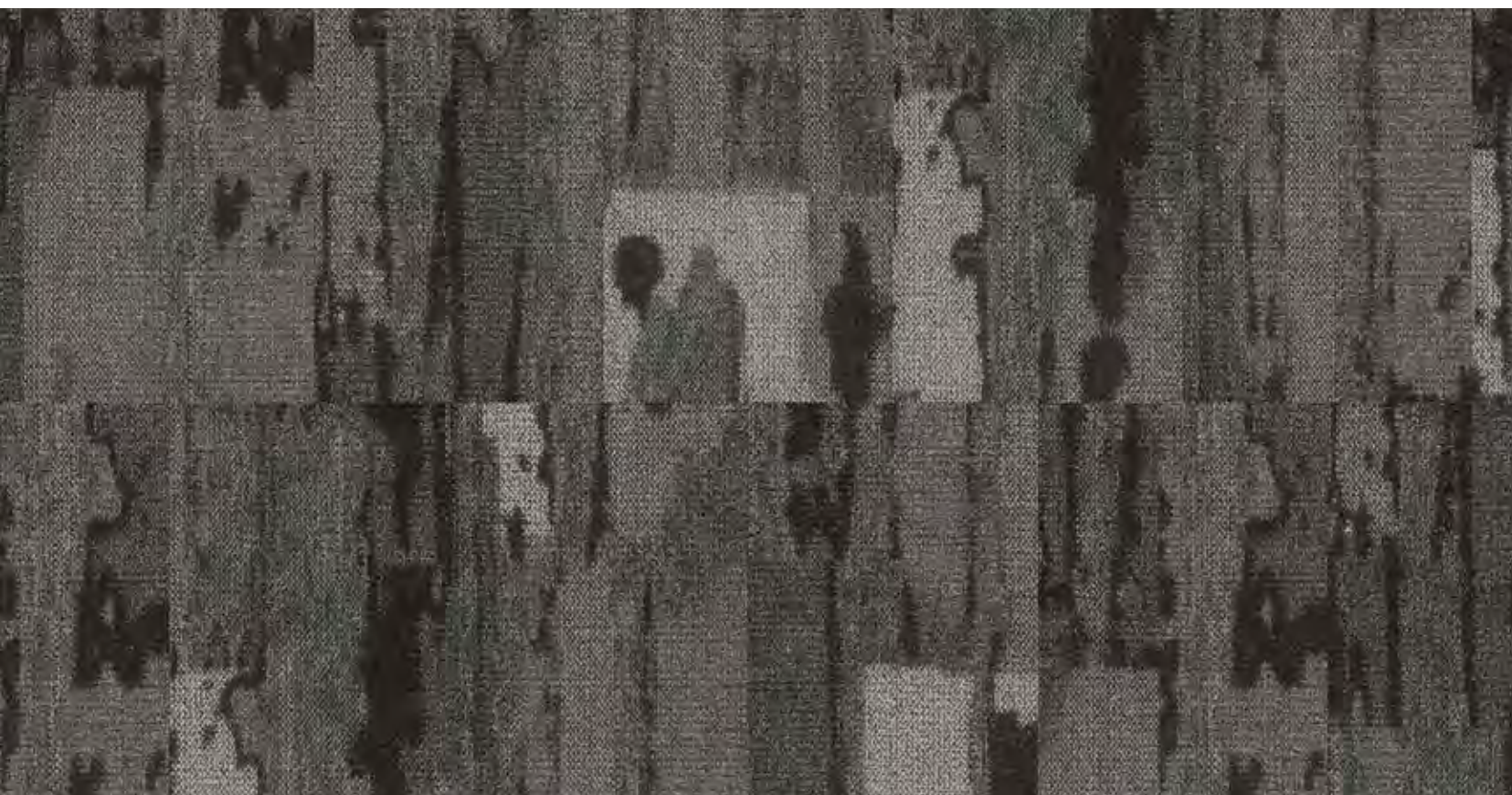


style 7712
color 2324
blue kashi



(left) Emulsion Glazed, custom install. (above) Emulsion Blue Kashi, quarter turn and Atmospheric Blue Kashi, monolithic.



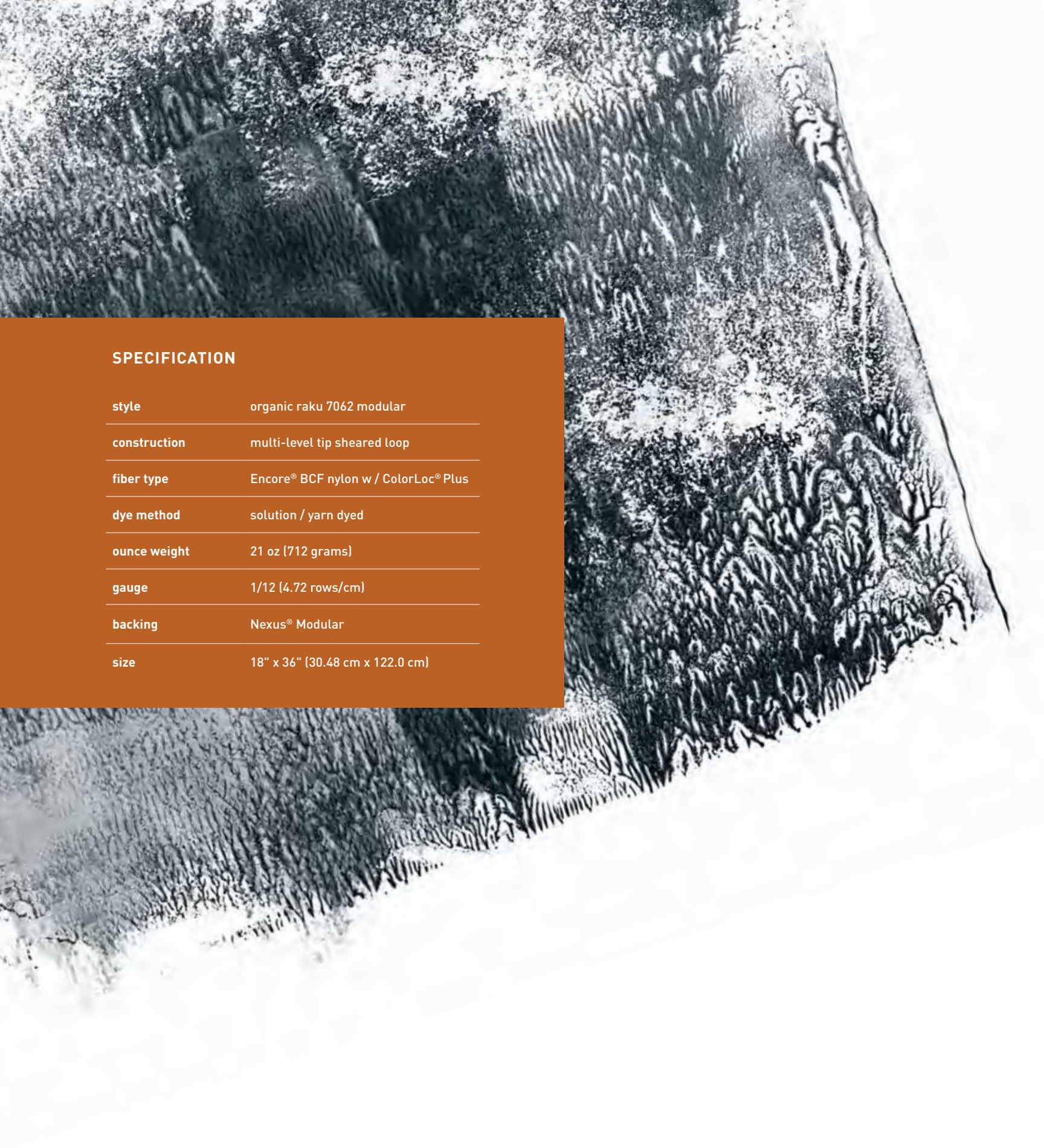


organic raku

Raku literally translates to “happiness in the accident.” Inspired by the unpredictable yet beautiful results of this quick-fire method, Organic Raku yields saturated colors, eye-catching flares, and brilliant luster in tufted form.

[right] Organic Raku *Kiln*, monolithic.





SPECIFICATION

style	organic raku 7062 modular
construction	multi-level tip sheared loop
fiber type	Encore® BCF nylon w / ColorLoc® Plus
dye method	solution / yarn dyed
ounce weight	21 oz (712 grams)
gauge	1/12 (4.72 rows/cm)
backing	Nexus® Modular
size	18" x 36" (30.48 cm x 122.0 cm)



style 7062
color 2344
silica



style 7062
color 2345
kiln



style 7062
color 2348
flint



style 7062
color 2349
carbon



style 7062
color 2350
high fire



style 7062
color 2351
burnished



style 7062
color 2353
iridescent



style 7062
color 2354
adobe



style 7062
color 2355
frits



(left) Organic Raku Kiln, basketweave. (above) Organic Raku Frits, herringbone.



Organic Raku K17n, ashlar.

colorline overview

amorphous 7711



2312
glazed



2313
iron



2314
obsidian



2315
bisque



2316
clay



2317
oxide



2318
alumina



2319
vitreous



2320
tarnish



2321
fresco



2322
alkaline

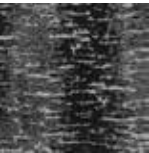


2323
molten




2324
blue kashi


atmospheric 7713




2312
glazed




2313
iron



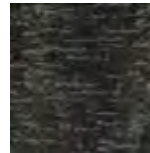
2314
obsidian



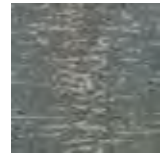
2315
bisque




2316
clay



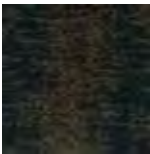
2317
oxide




2318
alumina




2319
vitreous




2320
tarnish



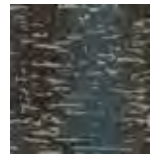
2321
fresco



2322
alkaline




2323
molten

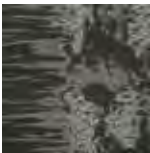


2324
blue kashi


emulsion 7712




2312
glazed



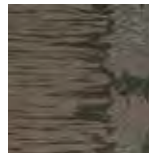
2313
iron



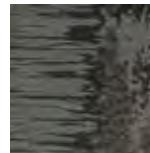
2314
obsidian



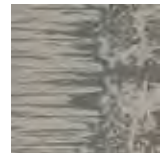
2315
bisque




2316
clay




2317
oxide




2318
alumina



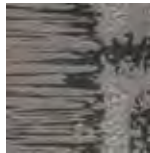
2319
vitreous




2320
tarnish



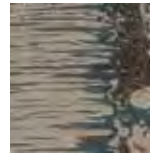
2321
fresco



2322
alkaline




2323
molten




2324
blue kashi


organic raku 7062




2344
silica




2345
kiln




2348
flint



2349
carbon



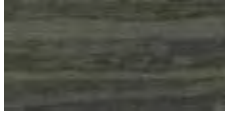
2350
high fire



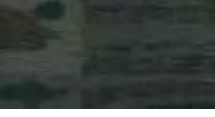
2351
burnished



2353
iridescent



2354
adobe



2355
frits

TECHNOLOGIES

ProTex® Soil Release
ProTex is a proprietary fluorochemical technology that impedes soiling and improves cleanability. It is standard on all J+J Flooring Group products.

OPTIONAL:
ProSept® Antimicrobial
Sentir® Advanced Odor-Blocking Technology

product details

FIBER

Encore® BCF Nylon with ColorLoc® Plus
Encore BCF nylon with ColorLoc Plus is manufactured to offer exceptional color, performance and appearance retention. Carpet using Encore BCF nylon with ColorLoc Plus - our patented stain resistant technology - is engineered to resist permanent staining and is backed by Lifetime Performance Warranties for stain resistance, colorfastness, color transfer, water bleed, bleach resistance and wear.

BACKINGS

Nexus® Modular
Nexus modular products can be installed in a variety of ways and are performance engineered to be visually appealing. In addition, they are designed to accommodate your long-term flooring budget.

- Manufactured in an ISO 14001 certified facility
- Contains pre-consumer recycled content and contributes to LEED
- Recyclable through the J+J Flooring Group's R4 Carpet Reclamation Program

ADHESIVES

Commercialon® Premium Modular Adhesive
A high strength acrylic latex-based carpet adhesive specifically formulated for bonding modular PVC backed carpet to the floor. This premium adhesive is for use with all Nexus Modular Tile products. This adhesive is guaranteed for the life of the installation when used in accordance with the J+J Flooring Group Carpet Installation Handbook. Commercialon Premium Modular Adhesive meets the CRI Low-VOC Emission Criteria, CRI ID# PSA-425402. Commercialon Premium Modular Adhesive is non toxic, has ultra-low odor and is antimicrobial in the dry state.

OPTIONAL:
TileTabs - High Tack Adhesive Tabs (modular only)

corporate programs



Green Circle - Zero Waste to Landfill Operations Certification
We are proudly certified as a Zero Waste to Landfill manufacturer by GreenCircle Certified, LLC., a prominent third-party certifier of environmental claims. We are the first commercial flooring manufacturer in the United States to achieve this landfill free status and the first company in the industry to have its waste diversion efforts audited and verified by a recognized, third-party certifier.

To learn more about zero waste or our other initiatives see our sustainability progress report online at jjflooringgroup.com/sustainability



We're on it.
The J+J Flooring Group Premium Customer Experience.

Our Premium Customer Experience is a carefully crafted process by which we guarantee that our customers will get the products, services and the reliability they expect from us.

To learn more visit jjflooringgroup.com/about/cx

©2017 J&J Flooring Group, LLC - This unique design is protected under the U.S. Copyright Act of 1976. Any unauthorized copying or duplication of this design constitutes copyright infringement in violation of federal law.

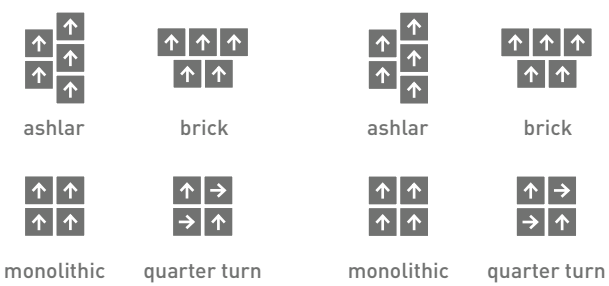
Due to the unique visual characteristics of modular carpets, pattern repeats and pattern run-off seams may appear more noticeable than in broadloom carpets. Such visual characteristics do not constitute a manufacturing defect, and as such, should be considered when selecting modular carpet and its installation.

These photographs are representations of the installation for this modular product. Your modular installation may look different than these photos depending upon individual tile placement, lighting, and overall space layout, including furnishings. Final tile placement and the resulting visual is thus the customer's, and not J+J Flooring Group's responsibility.



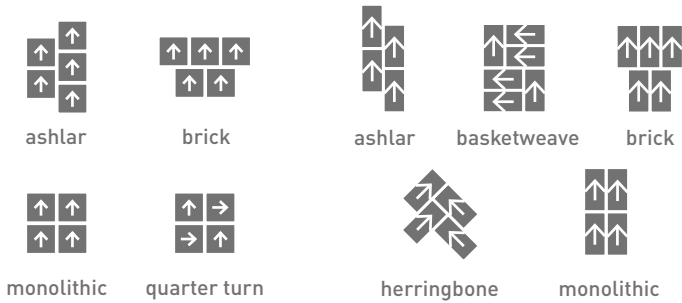
style	amorphous 7711 modular	atmospheric 7713 modular
construction	multi-level tip sheared loop	multi-level tip sheared loop
fiber type	Encore® BCF Nylon w/ ColorLoc® Plus	Encore® BCF Nylon w/ ColorLoc® Plus
dye method	solution / yard dyed	solution / yard dyed
ounce weight	35.0 oz/sy (1186.7 grams/m²)	35.0 oz/sy (1186.7 grams/m²)
gauge	1/10 (3.94 rows/cm)	1/10 (3.94 rows/cm)
backing	Nexus® modular	Nexus® modular
size	24" x 24" (61 cm x 61 cm)	24" x 24" (61 cm x 61 cm)
pattern repeat	n/a	n/a
total thickness (nominal average)	.375 inches (0.95 cm)	.375 inches (0.95 cm)
special technology	ProTex® fluorochemical	ProTex® fluorochemical
optional special technologies	ProSept® antimicrobial Sentir® advanced odor blocking treatment	ProSept® antimicrobial Sentir® advanced odor blocking treatment
physical testing	flooring radiant panel (class 1) pill test – (passes) smoke density (less than 450 flaming) static generation -(less than 3.5 kv) ADA compliance (compliant for accessible routes)	flooring radiant panel (class 1) pill test – (passes) smoke density (less than 450 flaming) static generation -(less than 3.5 kv) ADA compliance (compliant for accessible routes)
warranties	lifetime fiber performance for wear lifetime fiber performance for static lifetime stain removal lifetime colorfastness to light and atmospheric contaminants lifetime for tuft bind strength (edge ravel, yarn pulls, zippering) lifetime against delamination lifetime dimensional stability	lifetime fiber performance for wear lifetime fiber performance for static lifetime stain removal lifetime colorfastness to light and atmospheric contaminants lifetime for tuft bind strength (edge ravel, yarn pulls, zippering) lifetime against delamination lifetime dimensional stability

modular installation methods



style	emulsion 7712 modular	organic raku 7062 modular
construction	multi-level tip sheared loop	multi-level tip sheared loop
fiber type	Encore® BCF Nylon w/ ColorLoc® Plus	Encore® BCF Nylon w/ ColorLoc® Plus
dye method	solution / yard dyed	solution / yard dyed
ounce weight	35.0 oz/sy (1186.7 grams/m²)	21.0 oz/sy (712 grams/m²)
gauge	1/10 (3.94 rows/cm)	1/12 (4.72 rows/cm)
backing	Nexus® modular	Nexus® modular
size	24" x 24" (61 cm x 61 cm)	18" x 36" (30.48 cm x 122.0 cm)
pattern repeat	n/a	n/a
total thickness (nominal average)	.375 inches (0.95 cm)	.281 inches (0.714 cm)
special technology	ProTex® fluorochemical	ProTex® fluorochemical
optional special technologies	ProSept® antimicrobial Sentir® advanced odor blocking treatment	ProSept® antimicrobial Sentir® advanced odor blocking treatment
physical testing	flooring radiant panel (class 1) pill test – (passes) smoke density (less than 450 flaming) static generation -(less than 3.5 kv) ADA compliance (compliant for accessible routes)	flooring radiant panel (class 1) pill test – (passes) smoke density (less than 450 flaming) static generation -(less than 3.5 kv) ADA compliance (compliant for accessible routes)
warranties	lifetime fiber performance for wear lifetime fiber performance for static lifetime stain removal lifetime colorfastness to light and atmospheric contaminants lifetime for tuft bind strength (edge ravel, yarn pulls, zippering) lifetime against delamination lifetime dimensional stability	lifetime fiber performance for wear lifetime fiber performance for static lifetime stain removal lifetime colorfastness to light and atmospheric contaminants lifetime for tuft bind strength (edge ravel, yarn pulls, zippering) lifetime against delamination lifetime dimensional stability

modular installation methods





jjflooringgroup.com

P.O. Box 1287
Dalton, GA 30722
p 800 241 4586
f 706 275 4433

carpet | lvt | kinetex

A Division of **Engineered
FLOORS**