

# City Blocks III



FLOORING



# City Blocks III



## INSPIRATION

City Blocks III is an artful nod to lithographs that give a bird's eye view of the byways and intersecting thoroughfares of cities and town squares. An overlay of abstract grids provide a mosaic of varying shades that complement a solid neutral base. The collection features three new energized colorways, along with the four most popular original colors that will bring a refreshing aesthetic to contemporary spaces.



(cover) CITY BLOCKS III // JACKSON SQUARE // ashlar  
(right) CITY BLOCKS III // GRAND SQUARE // monolithic





CITY BLOCKS III // TOWER SQUARE // bnck





CITY BLOCKS III // GRAND SQUARE // broadloom  
LEGEND // FICTION // ashlar



COORDINATES

- 1. DOWNTOWN // 1850 // #3155 Fifth // Kinetex
- 2. FRAMEWORK // V5001 // #1014 Partition // LVT
- 3. INTRINSIC // 7096 // #2719 Essential // Modular
- 4. STRATA // 1826 // #1848 Feldspar // Kinetex
- 5. SMOLDER // 7715 // #2481 Fume // Modular
- 6. STACKED II // 7581 // #2231 Monument // Modular
- 7. CITY BLOCKS III // 7202 & 6202 // #3341 Grand Square // Modular + Broadloom
- 8. NETWORK // 1842 // #2854 Modem // Kinetex
- 9. IMPROMPTU // 7071 & 6471 // #2383 On A Whim // Modular + Broadloom





# City Blocks III

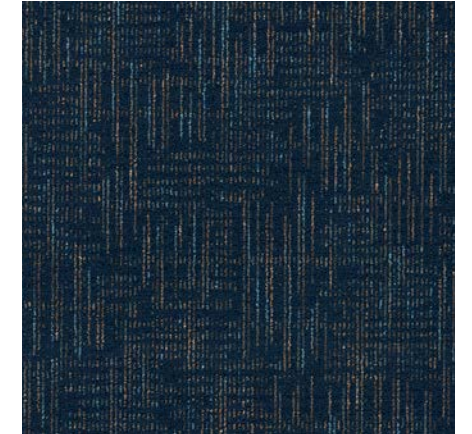
24"x24" MODULAR + BROADLOOM



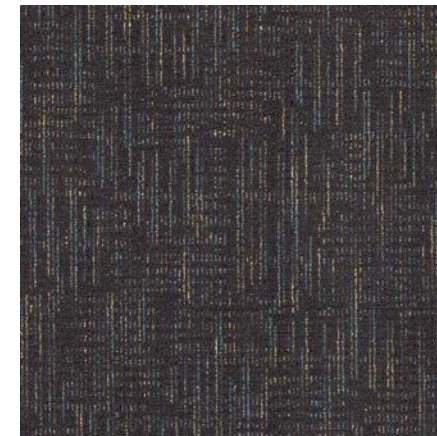
**COLOR 1315**  
jackson square



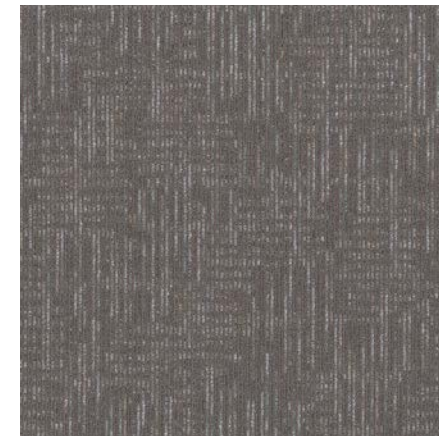
**COLOR 2103**  
freedom square



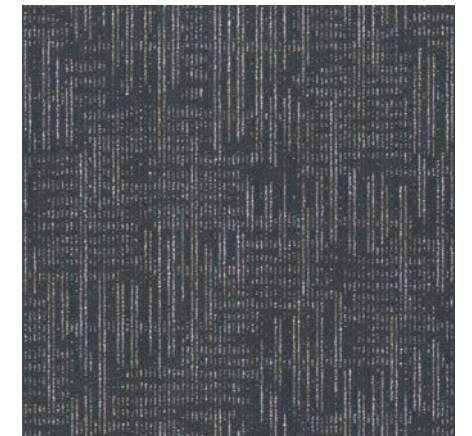
**COLOR 2104**  
celebration square



**COLOR 2105**  
university square



**COLOR 3341**  
grand square



**COLOR 3342**  
tower square



**COLOR 3343**  
market square



FIBER

**Encore® SD Nylon** (with recycled content) is specifically engineered to maximize appearance retention with exceptional color, performance, sustainability and practicality.

**Encore® Nylon with ColorLoc® Plus** is manufactured to offer exceptional color, performance and appearance retention. Carpet using Encore nylon with ColorLoc Plus - our patented stain resistant technology - is engineered to resist permanent staining and is backed by Lifetime Performance Warranties for stain resistance, colorfastness, color transfer,water bleed, bleach resistance and wear.

MOISTURE

Are high levels of moisture in your concrete slab causing issues with your project’s floor covering? We can help.

- » Nexus® Modular Carpet with TileTabs – 99% RH
- » Cost-efficient
- » Long-term performance
- » Straightforward, easy-to-understand warranty
- » Requires no special floor preparation

BACKINGS

**Nexus® Modular** products can be installed in a variety of ways and are performance engineered to be visually appealing. In addition, they are designed to accommodate your long-term flooring budget.

- » Manufactured in an ISO 14001 certified facility
- » Contains pre-consumer recycled content and contributes to LEED
- » Recyclable through the J+J Flooring’s R4 Carpet Reclamation Program

**PremierBac® Plus** is standard on broadloom products and provides superior construction to ensure solid dimensional stability for broadloom carpets.

- » Stretch-in or glue-down installation
- » Manufactured in an ISO 14001 certified facility
- » Contains pre-consumer recycled content and contributes to LEED
- » Recyclable through the J+J Flooring R4 Carpet Reclamation Program

TECHNOLOGIES

**ProTex® Anti-Soil Treatment**  
ProTex is a proprietary anti-soil treatment technology that is applied and bonded to the pile fiber to impede soiling and to improve cleanability. It is standard on all J+J Flooring products.

OPTIONAL:  
**ProSept® Antimicrobial**  
**Sentir® Advanced Odor-Blocking Technology**

ADHESIVE

**Commercialon® Premium Carpet Adhesive** is formulated for the most demanding interior carpet installations. It forms a powerful bond with stiff and heavy backed commercial carpets directly over approved substrates. It is quick setting, features antimicrobial protection and can be removed easily. This solvent free adhesive is also low in odor, meeting the low VOC emission criteria of the CRI Green Label Plus Indoor Air Quality. Commercialon Premium Adhesive is for use with broadloom PremierBac Plus, TitanBac® Plus and Endure Plus backings systems.

**Commercialon® Premium Modular Adhesive** is a high strength acrylic latex-based carpet adhesive specifically formulated for bonding modular PVC backed carpet to the floor. This premium adhesive is for use with all Nexus Modular Tile products. This adhesive is guaranteed for the lifetime of the installation when used in accordance with the J+J Flooring installation instructions. Commercialon® Premium Modular Adhesive meets the CRI Low-VOC Emission Criteria, CRI ID# PSA-425402. Commercialon® PremiumModular Adhesive is non toxic, has ultra-low odor and is antimicrobial in the dry state.

OPTIONAL:  
**TileTabs - High Tack Adhesive Tabs** (modular only)

STYLE	city blocks III 7202 modular	city blocks III 6202 broadloom
CONSTRUCTION	patterned loop	patterned loop
FIBER TYPE	Encore® SD Nylon & Encore® Nylon with ColorLoc® Plus	Encore® SD Nylon & Encore® Nylon with ColorLoc® Plus
DYE METHOD	solution / yarn dyed	solution / yarn dyed
OUNCE WEIGHT	18.0 oz./sy (610 grams/m²)	18.0 oz./sy (610 grams/m²)
GAUGE	1/12 (4.72 rows/cm)	1/12 (4.72 rows/cm)
BACKING	Nexus® Modular	PremierBac® Plus
SIZE	24” x 24” (61.0 cm X 61.0 cm)	12 feet (3.66 m)
PATTERN REPEAT	n/a	24” x 24” (61.0 cm X 61.0 cm)
TOTAL THICKNESS (nominal average)	0.25 inches (0.635 cm)	0.25 inches (0.635 cm)
SPECIAL TECHNOLOGY	ProTex® anti-soil treatment	ProTex® anti-soil treatment
OPTIONAL SPECIAL TECHNOLOGIES	ProSept® antimicrobial Sentir® advanced odor blocking treatment	ProSept® antimicrobial Sentir® advanced odor blocking treatment
PHYSICAL TESTING	flooring radiant panel (class 1) pill test – (passes) smoke density (less than 450 flaming) static generation -(less than 3.5 kv) ADA compliance (compliant for accessible routes)	flooring radiant panel (class 1) pill test – (passes) smoke density (less than 450 flaming) static generation -(less than 3.5 kv) ADA compliance (compliant for accessible routes)
FIBER WARRANTY	lifetime fiber performance for wear lifetime fiber performance for static lifetime stain removal lifetime colorfastness to light and atmospheric contaminants	lifetime fiber performance for wear lifetime fiber performance for static lifetime stain removal lifetime colorfastness to light and atmospheric contaminants
BACKING WARRANTY	lifetime for tuft bind strength (edge ravel, yarn pulls, zippering) lifetime against delamination lifetime dimensional stability	10 year tuft bind strength (edge ravel, yarn pulls, zippering) 10 year against delamination

MODULAR INSTALLATION METHODS



©2021 J+J Flooring Group, LLC - This unique design is protected under the U.S. Copyright Act of 1976. Any unauthorized copying or duplication of this design constitutes copyright infringement in violation of federal law. Due to the unique visual characteristics of modular carpets, pattern repeats and pattern run-off seams may appear more noticeable than in broadloom carpets. Such visual characteristics do not constitute a manufacturing defect, and as such, should be considered when selecting modular carpet and its installation.

These photographs are representations of the installation for this modular product. Your modular installation may look different than these photos depending upon individual tile placement, lighting, and overall space layout, including furnishings. Final tile placement and the resulting visual is thus the customer’s, and not J+J Flooring’s responsibility.

STRAIGHT-FORWARD WARRANTIES				
Warranty: Installed with TileTabs	Warranty: Installed with Commercialon® Premium Adhesive (non-prorated)	Warranty: Installed with any other adhesive	Max RH, pH: Installed without Commercialon® Premium Sealer	Max RH, pH: Installed with Commercialon® Premium Sealer
Lifetime	Lifetime	1 Year	90% RH, pH 9	99% RH, pH 11 (Tiletabs) 97% RH, pH 11 (Commercialon® Adhesive)



P.O. BOX 2207  
DALTON, GA 30722  
P 800 241 4586  
F 706 275 4433  
JJFLOORING.COM

carpet | lvt | kinetex