

Journey

MODULAR

QUICK SHIP



FLOORING

Journey



INSPIRATION

It is said that the journey of a thousand miles begins with one step. A runner takes that step, adds adrenaline, pacing and perseverance and gains a sense of accomplishment and empowerment - a reset of mind and body. Our new Quick Ship modular tile, Journey, celebrates that energy of acceleration and momentum with graphic patterning and flashes of color that echo the tempo and stride of the avid runner. Available in an 18" x 36" tile, Journey offers two neutrals and six accents.



{cover} JOURNEY // PACE, BLUE PACE // ashlar
{right} JOURNEY // LEAD, GREEN LEAD // brick



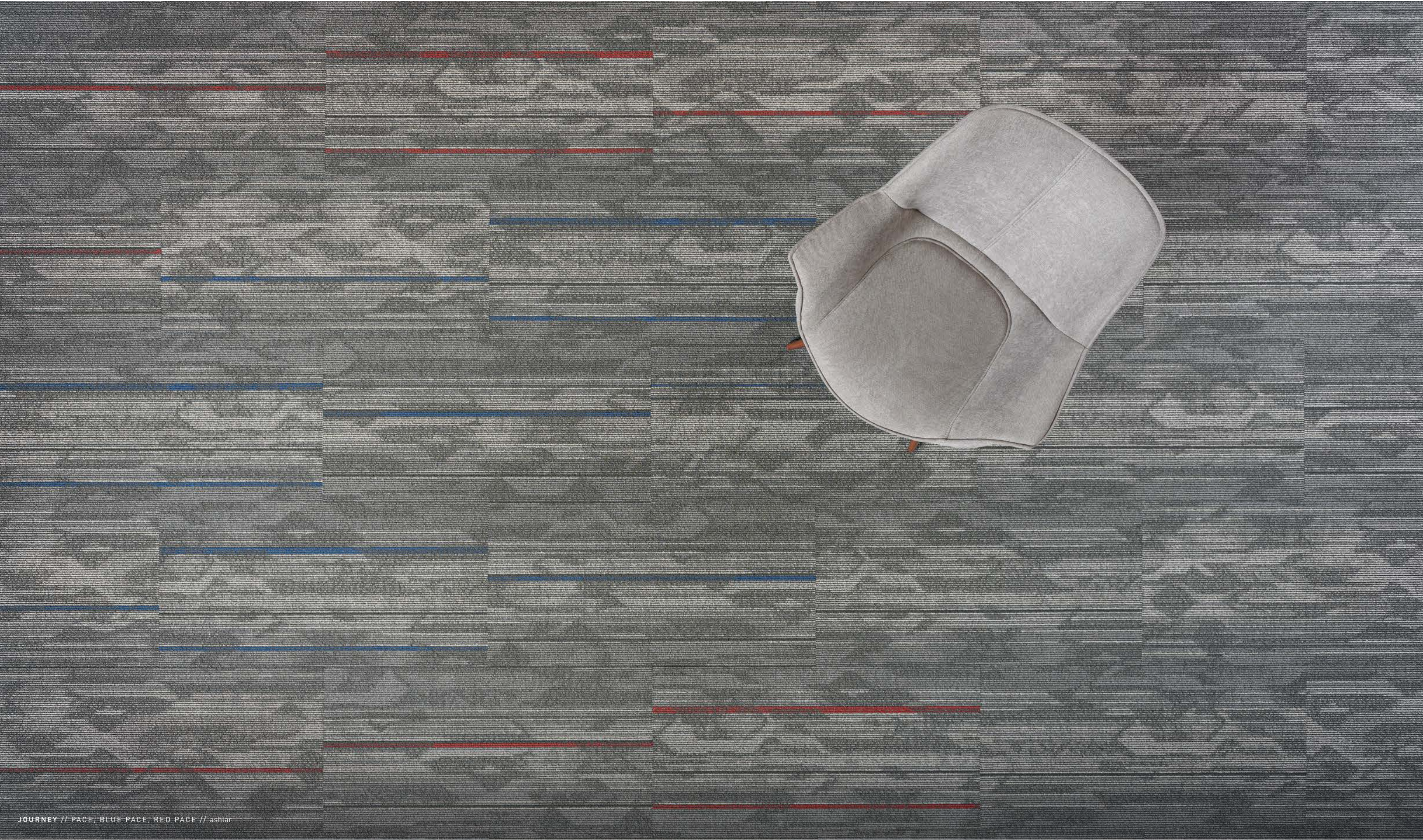
JOURNEY // PACE // basketweave



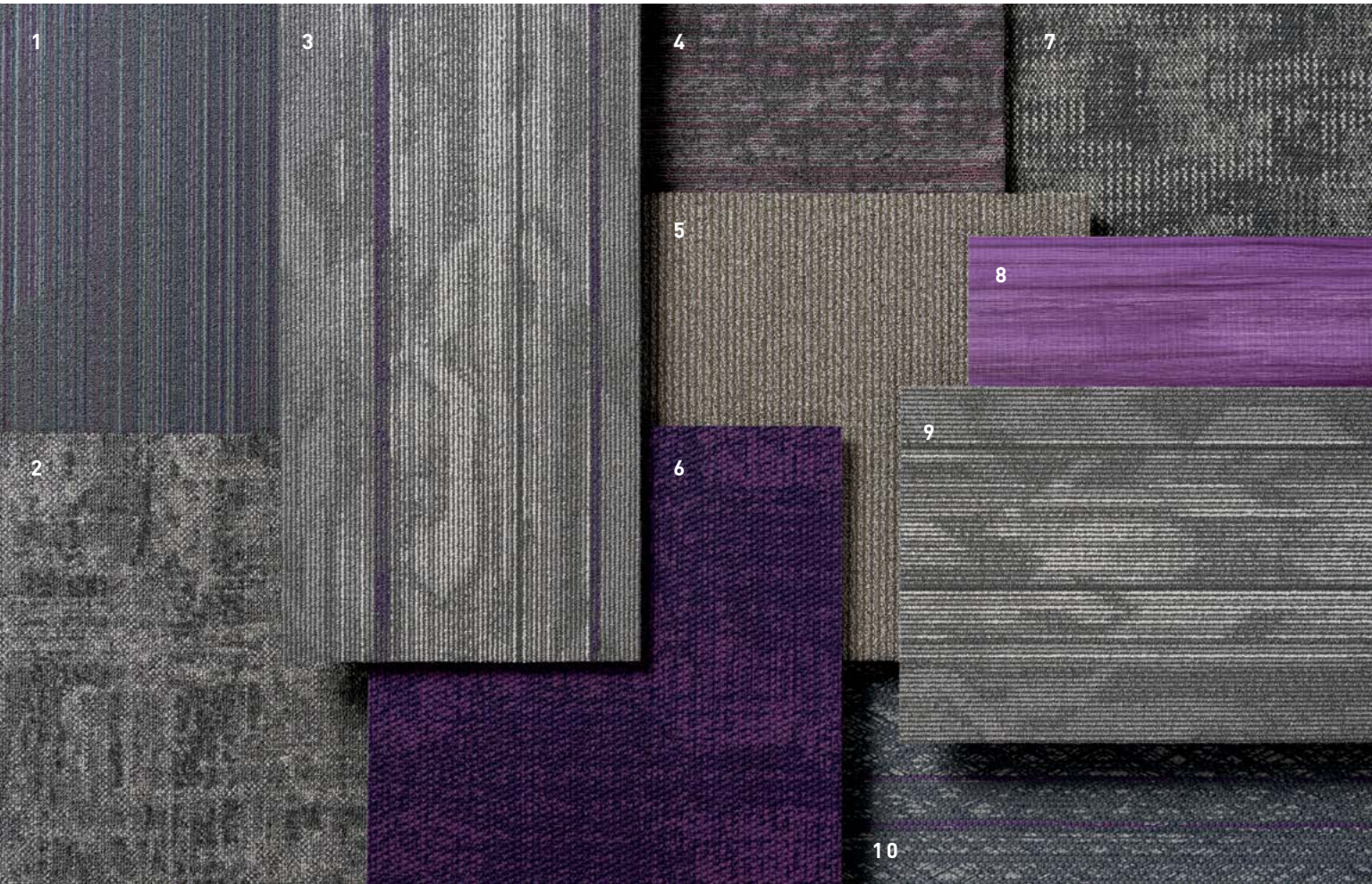
JOURNEY // PACE, BLUE PACE, RED PACE // ashlar



JOURNEY // GREEN LEAD, GOLD LEAD // herringbone



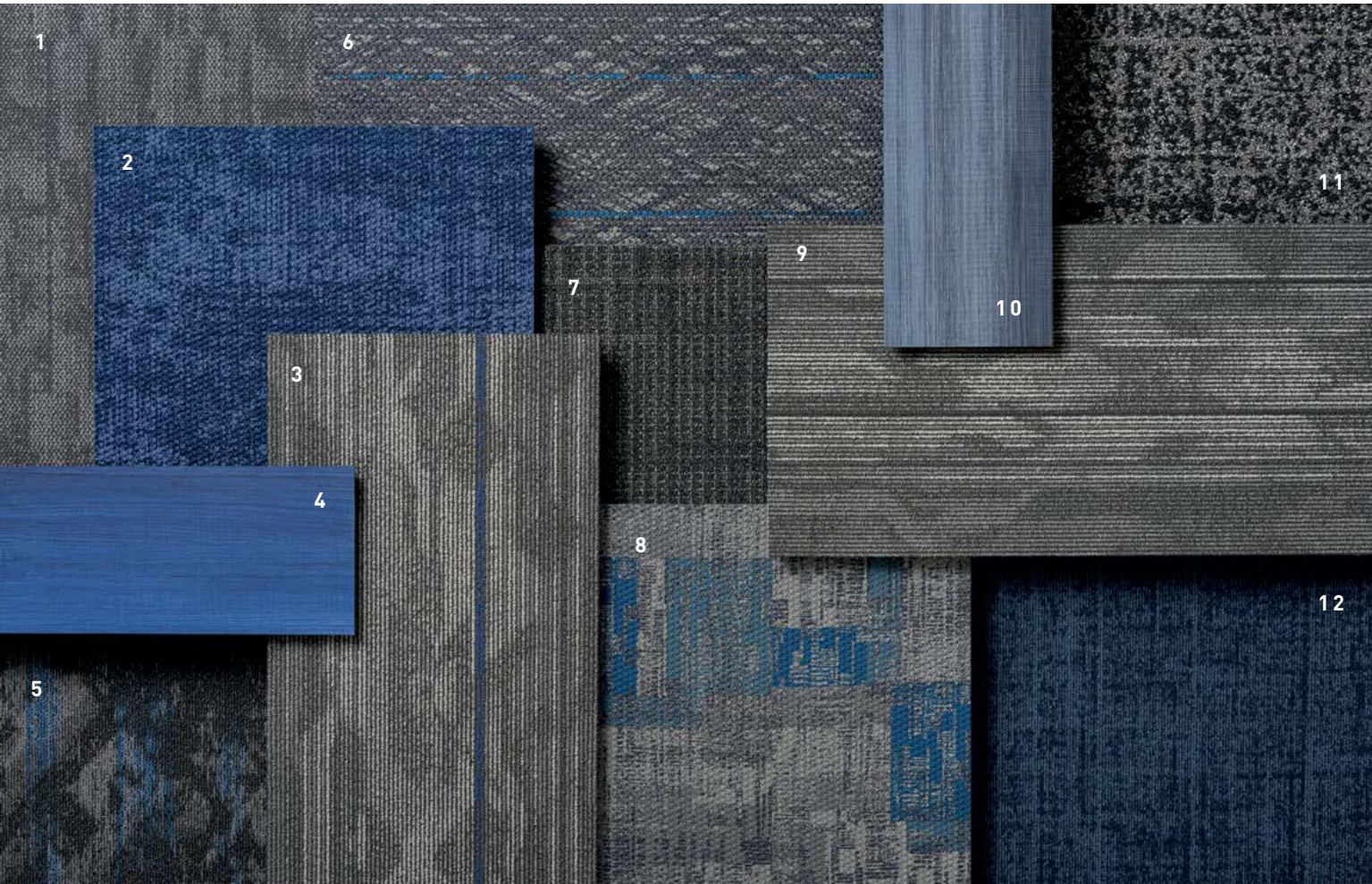
JOURNEY // PACE, BLUE PACE, RED PACE // ashtar



COORDINATES

Beyond the beauty of individual products, our flooring coordinates effortlessly across all of our product platforms - modular carpet tile, broadloom, LVT and Kinetex textile composite flooring. This offering enables you to blend a range of designs with tonal simplicity to create palettes that reflect the demands of each unique space.

- 1. ELEVATED // 7074 // #2065 Empire // Modular
- 2. FRACTURED PLAID // 7587 // #2884 Plush // Modular
- 3. JOURNEY // 7621 // #3350 Purple Pace // Modular
- 4. ADJUST // 7601 // #3276 Plum Path // Modular
- 5. MINERAL // 7027 // #1796 Granite // Modular
- 6. NETWORK // 1842 // #2911 Crisscross // Kinetex
- 7. INTRINSIC // 7096 // #2720 Fundamental // Modular
- 8. MAKE YOUR MARK // V5012 & V5013 // #1071 Iris // LVT
- 9. JOURNEY // 7621 // #3347 Pace // Modular
- 10. Z FACTOR // 1844 // #2870 Data // Kinetex



COORDINATES

- 1. OXFORD // 7063 // #2401 Jersey // Modular
- 2. NETWORK // 1842 // #2910 Maze // Kinetex
- 3. JOURNEY // 7621 // #3349 Blue Pace // Modular
- 4. MAKE YOUR MARK // V5012 & V5013 // #1067 Cobalt // LVT
- 5. ADVANCE // 7600 // #3275 Royal Path // Modular
- 6. Z FACTOR // 1844 // #2862 Dimension // Kinetex
- 7. ONE GOOD TURN // 7075 // #2467 Turn of Events // Modular
- 8. CATALYST // 1841 // #2845 Phase // Kinetex
- 9. JOURNEY // 7621 // #3347 Pace // Modular
- 10. MAKE YOUR MARK // V5012 & V5013 // #1068 Denim // LVT
- 11. METAMORPHIC // 7717 // #2961 Soapstone // Modular
- 12. ELEMENTAL // 7683 // #2630 Tailor // Modular

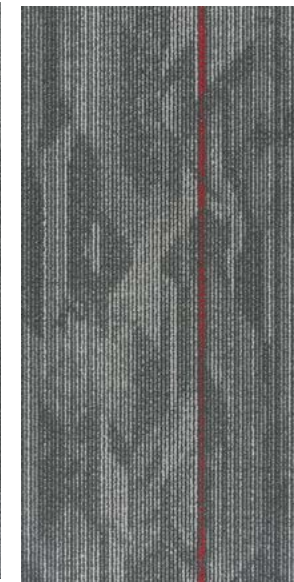


Journey

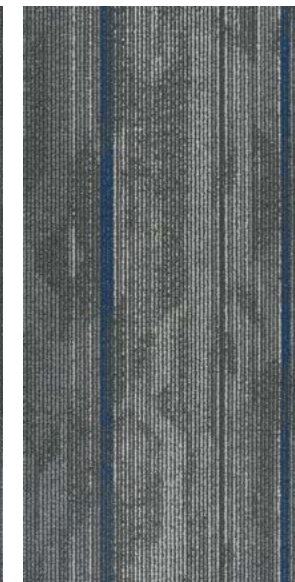
18"x36" MODULAR



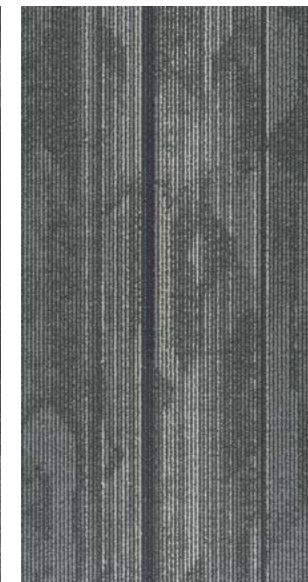
QUICK SHIP
COLOR 3347
pace



QUICK SHIP
COLOR 3348
red pace



QUICK SHIP
COLOR 3349
blue pace



QUICK SHIP
COLOR 3350
purple pace



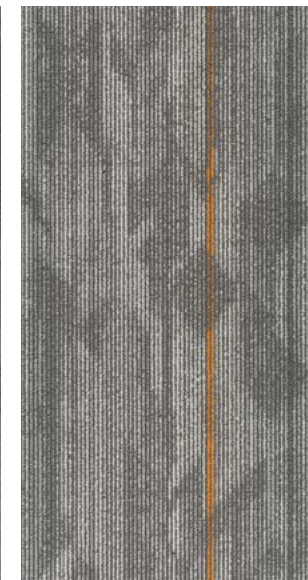
QUICK SHIP
COLOR 3351
lead



QUICK SHIP
COLOR 3352
green lead



QUICK SHIP
COLOR 3353
gold lead



QUICK SHIP
COLOR 3354
orange lead

JOURNEY // PURPLE PACE // ashlar
[back cover] JOURNEY // ORANGE LEAD // brick

ALL COLORS ARE AVAILABLE AS QUICK SHIP. Orders up to 1,500 square yards (13,500 sq. ft.) ship within 10 days.

MODULAR

QUICK SHIP



P.O. BOX 2207

DALTON, GA 30722

P 800 241 4586

F 706 275 4433

JJFLOORING.COM

JX5621M07

carpet | lvt | kinetex



FLOORING
A DIVISION OF ENGINEERED FLOORS