

MODULAR

QUICK SHIP OPTIONS

Elemental Reveal



FLOORING

Elemental Reveal



INSPIRATION

The peels of time from layers of paint on wood and masonry hint at a history concealed beneath. Embracing these weathered and contrasting imperfections, Elemental and Reveal unveil their own unrefined beauty of distressed patterning and texture. Elemental is a softly etched motif of muted tone-on-tones. Reveal mimics fragmented shards of pigment, scraped away, revealing layers of shades and texture just beneath the surface. Elemental and Reveal create a new dynamic for work spaces with a perfect balance of subdued and earthy colorways in 24"x24" tiles.



[cover] ELEMENTAL // FACET // REVEAL // FACET // monolithic
[right] REVEAL // FACET // monolithic



ELEMENTAL // DRAFTSMAN // brick



ELEMENTAL // RAW // ashtar



REVEAL // DRAFTSMAN // brick



REVEAL // RAW // ashlar



ELEMENTAL // STEEL // monolithic
REVEAL // STEEL // quarter-turn



COORDINATES

Beyond the beauty of individual products, our flooring coordinates effortlessly across all of our product platforms - modular carpet tile, broadloom, LVT and Kinetex textile composite flooring. This offering enables you to blend a range of designs with tonal simplicity to create palettes that reflect the demands of each unique space.

| | |
|---|--|
| 1. NETWORK // 1842 // #2853 Cyber // Kinetex | 6. REVEAL // 7685 // #2638 Steel // Modular |
| 2. FRAMEWORK // V5001 // #1014 Partition // LVT | 7. ADVANCE // 7600 // #3273 Light Beam // Modular |
| 3. STRIA // 7585 // #2743 Knit // Modular | 8. ELEMENTAL // 7683 // #2638 Steel // Modular |
| 4. REVERIE // 7684 // #2616 Chalk // Modular | 9. ADJUST // 7601 // #3273 Light Beam // Modular |
| 5. CRAFTWORK // 7099 + 6599 // #2204 Painter // Modular + Broadloom | 10. TRI-PLEX II // 1852 // #2295 Musketeers // Kinetex |



ELEMENTAL // COMPONENT // monolithic

Elemental 24"x24" MODULAR



COLOR 2635
raw



QUICK SHIP
COLOR 2638
steel



COLOR 2755
component



COLOR 2627
weathered



COLOR 2632
heritage



QUICK SHIP
COLOR 2636
pipes



QUICK SHIP
COLOR 2756
facet



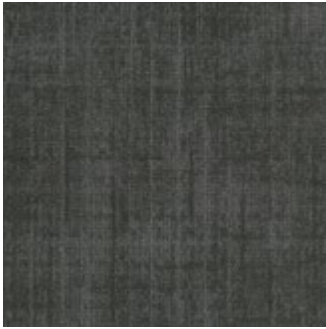
COLOR 2629
beam



COLOR 2753
composite



COLOR 2754
aspect



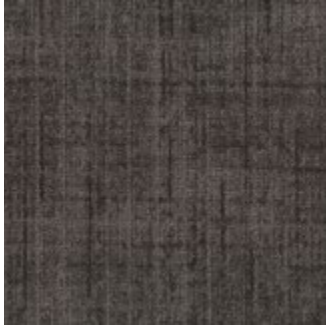
COLOR 2757
castor



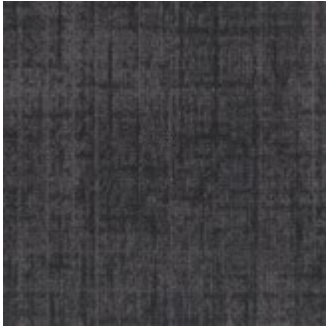
COLOR 2630
tailor



COLOR 2634
hutch



QUICK SHIP
COLOR 2639
galvanized



COLOR 2758
draftsman



COLOR 2640
hardware

Reveal 24"x24" MODULAR



COLOR 2635
raw



QUICK SHIP
COLOR 2638
steel



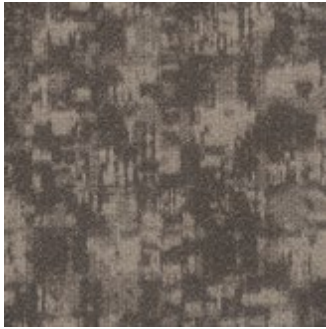
COLOR 2755
component



COLOR 2627
weathered



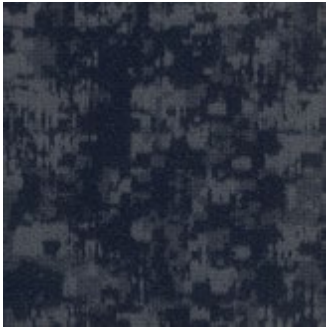
COLOR 2632
heritage



QUICK SHIP
COLOR 2636
pipes



QUICK SHIP
COLOR 2756
facet



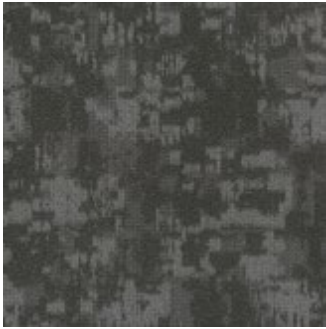
COLOR 2629
beam



COLOR 2753
composite



COLOR 2754
aspect



COLOR 2757
castor



COLOR 2630
tailor



COLOR 2634
hutch



QUICK SHIP
COLOR 2639
galvanized



COLOR 2758
draftsman



COLOR 2640
hardware



FIBER

Encore® SD Ultima® Nylon
(with recycled content) is specifically engineered to maximize appearance retention with exceptional color, performance, sustainability, and practicality.

BACKINGS

Nexus® Modular products can be installed in a variety of ways and are performance engineered to be visually appealing. In addition, they are designed to accommodate your long-term flooring budget.

- » Manufactured in an ISO 14001 certified facility
- » Contains pre-consumer recycled content and contributes to LEED
- » Recyclable through the J+J Flooring’s R4 Carpet Reclamation Program

ADHESIVE

Commercialon® Premium Modular Adhesive
A high strength acrylic latex-based carpet adhesive specifically formulated for bonding modular PVC backed carpet to the floor. This premium adhesive is for use with all Nexus Modular Tile products. This adhesive is guaranteed for the life of the installation when used in accordance with the J+J Flooring Carpet Installation Handbook. Commercialon Premium Modular Adhesive meets the CRI Low-VOC Emission Criteria, CRI ID# PSA-425402. Commercialon Premium Modular Adhesive is non toxic, has ultra-low odor and is antimicrobial in the dry state.

OPTIONAL:
TileTabs - High Tack Adhesive Tabs (modular only)

MOISTURE

Are high levels of moisture in your concrete slab causing issues with your project’s floor covering? We can help.

- » Nexus® Modular Carpet with TileTabs – 99% RH
- » Cost-efficient
- » Long-term performance
- » Straightforward, easy-to-understand warranty
- » Requires no special floor preparation

TECHNOLOGIES

ProTex® Anti-Soil Treatment
ProTex is a proprietary anti-soil treatment technology that is applied and bonded to the pile fiber to impede soiling and to improve cleanability. It is standard on all J+J Flooring products.

OPTIONAL:
ProSept® Antimicrobial
Sentir® Advanced Odor-Blocking Technology

STYLE

elemental 7683 modular

reveal 7685 modular

CONSTRUCTION

tip sheared patterned loop

patterned loop

FIBER TYPE

100% Encore® SD Ultima® nylon

100% Encore® SD Ultima® nylon

DYE METHOD

solution dyed

solution dyed

OUNCE WEIGHT

18.0 oz./sy (610 grams/m²)

19.0 oz./sy (644 grams/m²)

GAUGE

1/12 (4.72 rows/cm)

1/12 (4.72 rows/cm)

BACKING

Nexus® Modular

Nexus® Modular

SIZE

24” x 24” (61.0 cm X 61.0 cm)

24” x 24” (61.0 cm X 61.0 cm)

PATTERN REPEAT

n/a

n/a

TOTAL THICKNESS (nominal average)

0.25 inches (0.635 cm)

0.22 inches (0.56 cm)

SPECIAL TECHNOLOGY

ProTex® anti-soil treatment

ProTex® anti-soil treatment

OPTIONAL SPECIAL TECHNOLOGIES

ProSept® antimicrobial
Sentir® advanced odor blocking treatment

ProSept® antimicrobial
Sentir® advanced odor blocking treatment

PHYSICAL TESTING

flooring radiant panel (class 1)
pill test – (passes)
smoke density
(less than 450 flaming)
static generation -(less than 3.5 kv)
ADA compliance
(compliant for accessible routes)

flooring radiant panel (class 1)
pill test – (passes)
smoke density
(less than 450 flaming)
static generation -(less than 3.5 kv)
ADA compliance
(compliant for accessible routes)

FIBER WARRANTY

lifetime fiber performance for wear
lifetime fiber performance for static
lifetime stain removal
lifetime colorfastness to light and atmospheric contaminants

lifetime fiber performance for wear
lifetime fiber performance for static
lifetime stain removal
lifetime colorfastness to light and atmospheric contaminants

BACKING WARRANTY

lifetime for tuft bind strength (edge ravel, yarn pulls, zippering)
lifetime against delamination
lifetime dimensional stability

lifetime for tuft bind strength (edge ravel, yarn pulls, zippering)
lifetime against delamination
lifetime dimensional stability

MODULAR INSTALLATION METHODS



ashlar



brick



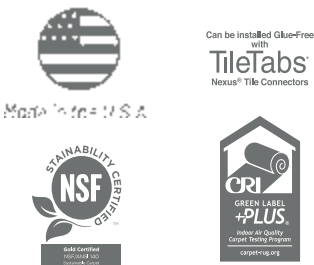
monolithic



quarter turn

STRAIGHT-FORWARD WARRANTIES

| Warranty: Installed with TileTabs | Warranty: Installed with Commercialon® Premium Adhesive (non-prorated) | Warranty: Installed with any other adhesive | Max RH, pH: Installed without Commercialon® Premium Sealer | Max RH, pH: Installed with Commercialon® Premium Sealer |
|---|--|---|---|--|
| Lifetime | Lifetime | 1 Year | 90% RH, pH 9 | 99% RH, pH 11 (Tiletabs) 97% RH, pH 11 (Commercialon® Adhesive) |



©2022 J+J Flooring Group, LLC - This unique design is protected under the U.S. Copyright Act of 1976. Any unauthorized copying or duplication of this design constitutes copyright infringement in violation of federal law. Due to the unique visual characteristics of modular carpets, pattern repeats and pattern run-off seams may appear more noticeable than in broadloom carpets. Such visual characteristics do not constitute a manufacturing defect, and as such, should be considered when selecting modular carpet and its installation.

These photographs are representations of the installation for this modular product. Your modular installation may look different than these photos depending upon individual tile placement, lighting, and overall space layout, including furnishings. Final tile placement and the resulting visual is thus the customer’s, and not J+J Flooring’s responsibility.

MODULAR

QUICK SHIP OPTIONS



P.O. BOX 2207
DALTON, GA 30722
P 800 241 4586
F 706 275 4433
JJFLOORING.COM
JX2221M07

carpet | lvt | kinetex



FLOORING
A DIVISION OF ENGINEERED FLOORS