

MODULAR + BROADLOOM

QUICK SHIP OPTIONS

STITCHING COLLECTION

Bouclé II



FLOORING

STITCHING COLLECTION

Bouclé II



INSPIRATION

Blending mid-century modern with a cozy, organic feel, Bouclé II weaves a pattern of soft nubby striations - adding a textured touch that creates an on-the-floor dimensionality that is soothingly subtle. Relaxed neutrals with contrasting flecks of neutrals balance out the color palette. Bouclé II is available in modular and broadloom with quick ship options



[cover] **BOUCLÉ II** // KNOT // ashtar
[right] **BOUCLÉ II** // FACING // herringbone





BOUCLÉ II // LINING // broadloom



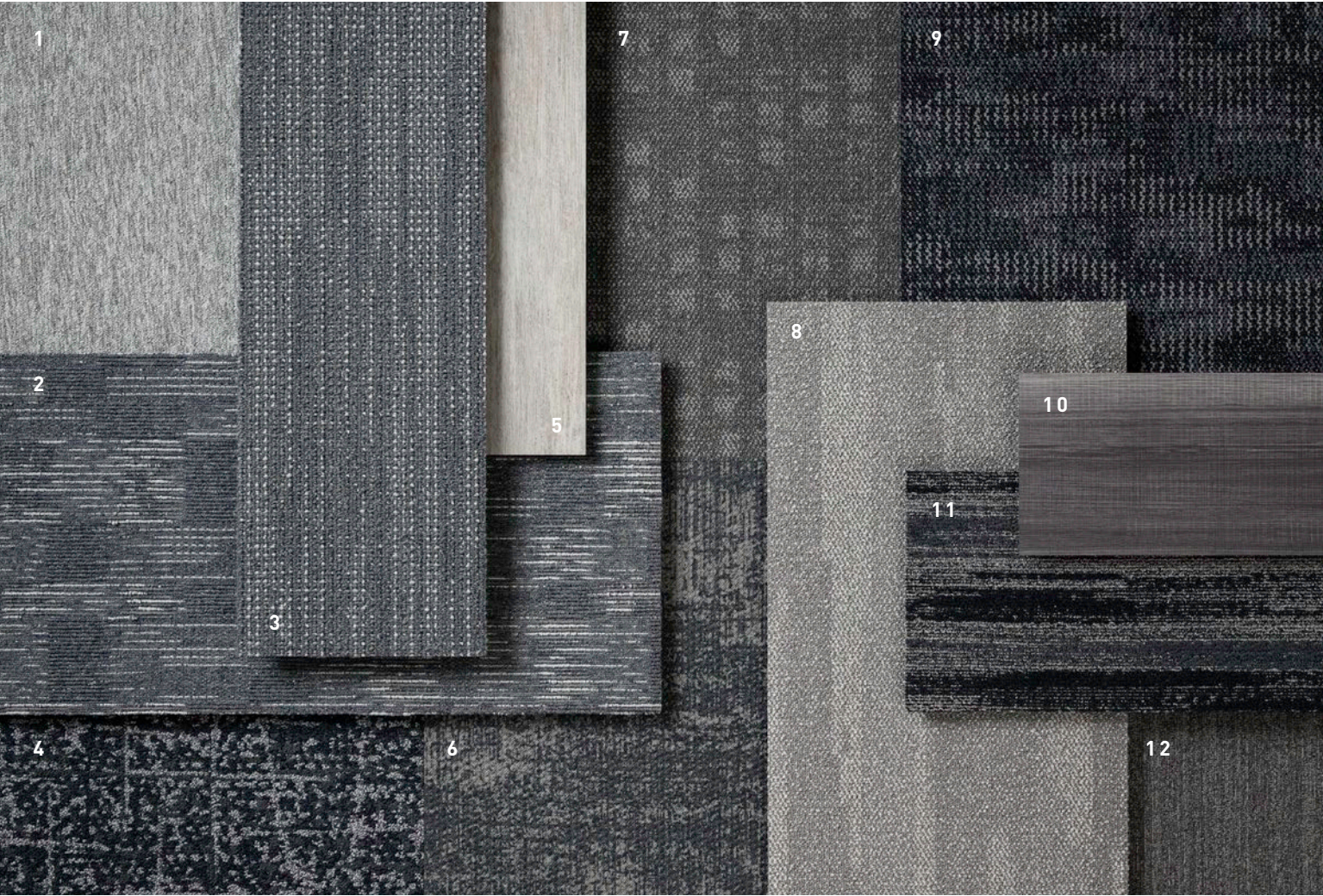
BOUCLÉ II // LINING // ashlar
TWEED // MEASURE // parquet



COORDINATES

Beyond the beauty of individual products, our flooring coordinates effortlessly across all of our product platforms - modular carpet tile, broadloom, LVT and Kinetex textile composite flooring. This offering enables you to blend a range of designs with tonal simplicity to create palettes that reflect the demands of each unique space.

- 1. COLOR ZONE // 7479 // #3222 Carbon // Modular
- 2. BOUCLÉ II // 7081 + 3081 // #3651 Lining // Modular + Broadloom
- 3. CRAFTWORK // 7099 + 6599 // #2198 Mason // Modular + Broadloom
- 4. TABBY // 7802 // #3628 Truffle // Modular
- 5. CONVERGENT // 7925 + 3925 // #3061 Coincide // Modular + Broadloom
- 6. METAMORPHIC // 7717 // #2960 Feldspar // Modular
- 7. QUILL // 7801 // #3628 Truffle // Modular
- 8. NETWORK // 1842 // #2853 Cyber // Kinetex
- 9. TWEED // 7083 // #2986 Measure // Modular
- 10. TIMELESS // V5011 // #1061 Gift // LVT
- 11. METAMORPHIC // 7717 // #2969 Sandstone // Modular



COORDINATES

Beyond the beauty of individual products, our flooring coordinates effortlessly across all of our product platforms - modular carpet tile, broadloom, LVT and Kinetex textile composite flooring. This offering enables you to blend a range of designs with tonal simplicity to create palettes that reflect the demands of each unique space.

- 1. VERTEX // 7438 + 2439 // #SRD52 Peak // Modular + Broadloom
- 2. CARDIGAN // 7591 // #3340 Knot Stitch // Modular
- 3. BOUCLÉ II // 7081 + 3081 // #2712 Knot // Modular + Broadloom
- 4. METAMORPHIC // 7717 // #2962 Gneiss // Modular
- 5. POWER PLAY // V5019 + V5020 // #1086 Influence // LVT
- 6. NETWORK // 1842 // #2856 Router // Kinetex
- 7. OXFORD // 7063 // #2401 Jersey // Modular
- 8. FUNCTION // 7410 // #3398 Portico // Modular
- 9. INTRINSIC // 7096 + 6096 // #2726 Inherent // Modular + Broadloom
- 10. MAKE YOUR MARK // V5013 + V5012 // #1063 Shadow // Modular
- 11. VARIANT // 7926 // #3072 Unify // Modular
- 12. COLOR ZONE // 7479 // #3226 Anchor // Modular



BOUCLÉ II // KNOT // ashlar
CARDIGAN // KNOT STITCH // monolithic

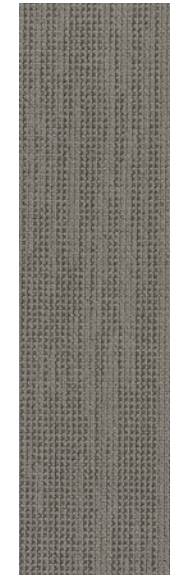


Bouclé II

MODULAR + BROADLOOM



QUICK SHIP
COLOR 2703
texture



COLOR 3650
facing



QUICK SHIP
COLOR 2706
strand



COLOR 2704
variegated



COLOR 2707
fiber



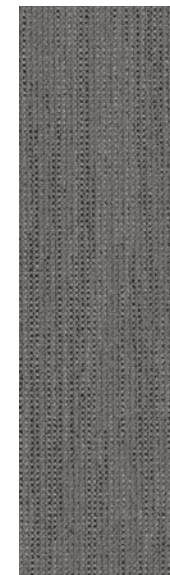
COLOR 3651
lining



COLOR 3652
notions



COLOR 2709
character



QUICK SHIP
COLOR 2708
warp



COLOR 2710
tweed



QUICK SHIP
COLOR 2711
knit



COLOR 3654
pressing



COLOR 2714
nubby



QUICK SHIP
COLOR 2712
knot

FIBER

Encore® SD Ultima® Nylon (with recycled content) is specifically engineered to maximize appearance retention with exceptional color, performance, sustainability, and practicality.

BACKINGS

Nexus® Modular products can be installed in a variety of ways and are performance engineered to be visually appealing. In addition, they are designed to accommodate your long-term flooring budget.

- » Manufactured in an ISO 14001 certified facility
- » Contains pre-consumer recycled content and contributes to LEED
- » Recyclable through the J+J Flooring’s R4 Carpet Reclamation Program

PremierBac® Plus is standard on broadloom products and provides superior construction to ensure solid dimensional stability for broadloom carpets.

- » Stretch-in or glue-down installation
- » Manufactured in an ISO 14001 certified facility
- » Contains pre-consumer recycled content and contributes to LEED
- » Recyclable through the J+J Flooring R4 Carpet Reclamation Program

ADHESIVE

Commercialon® Premium Carpet Adhesive is formulated for the most demanding interior carpet installations. It forms a powerful bond with stiff and heavy backed commercial carpets directly over approved substrates. It is quick setting, features antimicrobial protection and can be removed easily. This solvent free adhesive is also low in odor, meeting the low VOC emission criteria of the CRI Green Label Plus Indoor Air Quality. Commercialon Premium Adhesive is for use with broadloom PremierBac Plus, TitanBac® Plus and Endure Plus backings systems.

Commercialon® Premium Modular Adhesive A high strength acrylic latex-based carpet adhesive specifically formulated for bonding modular PVC backed carpet to the floor. This premium adhesive is for use with all Nexus Modular Tile products. This adhesive is guaranteed for the life of the installation when used in accordance with the J+J Flooring Carpet Installation Handbook. Commercialon Premium Modular Adhesive meets the CRI Low-VOC Emission Criteria, CRI ID# PSA-425402. Commercialon Premium Modular Adhesive is non toxic, has ultra-low odor and is antimicrobial in the dry state.

OPTIONAL:
TileTabs - High Tack Adhesive Tabs (modular only)

MOISTURE

Are high levels of moisture in your concrete slab causing issues with your project’s floor covering? We can help.

- » Nexus® Modular Carpet with TileTabs – 99% RH
- » Cost-efficient
- » Long-term performance
- » Straightforward, easy-to-understand warranty
- » Requires no special floor preparation

TECHNOLOGIES

ProTex® Anti-Soil Treatment
ProTex is a proprietary anti-soil treatment technology that is applied and bonded to the pile fiber to impede soiling and to improve cleanability. It is standard on all J+J Flooring products.

OPTIONAL:
ProSept® Antimicrobial
Sentir® Advanced Odor-Blocking Technology

STYLE	Bouclé II 7081 modular	Bouclé II 3081 broadloom
CONSTRUCTION	textured loop	textured loop
FIBER TYPE	100% Encore® SD Ultima® Nylon	100% Encore® SD Ultima® Nylon
DYE METHOD	solution dyed	solution dyed
OUNCE WEIGHT	25.0 oz/sy (848 grams/m2)	25.0 oz/sy (848 grams/m2)
GAUGE	1/10 (3.94 rows/cm)	1/10 (3.94 rows/cm)
BACKING	Nexus® modular	PremierBac® Plus
SIZE	12” x 48” (30.5 cm x 122.0 cm)	12 feet (3.66 m)
PATTERN REPEAT	n/a	n/a
TOTAL THICKNESS (nominal average)	0.25 inches (0.635 cm)	0.25 inches (0.635 cm)
SPECIAL TECHNOLOGY	ProTex® anti-soil treatment	ProTex® anti-soil treatment
OPTIONAL SPECIAL TECHNOLOGIES	ProSept® antimicrobial Sentir® advanced odor blocking treatment	ProSept® antimicrobial Sentir® advanced odor blocking treatment
PHYSICAL TESTING	flooring radiant panel (class 1) pill test – (passes) smoke density (less than 450 flaming) static generation – (less than 3.5 kv) ADA compliance (compliant for accessible routes)	flooring radiant panel (class 1) pill test – (passes) smoke density (less than 450 flaming) static generation -(less than 3.5 kv) ADA compliance (compliant for accessible routes)
FIBER WARRANTY	lifetime fiber performance for wear lifetime fiber performance for static lifetime stain removal lifetime colorfastness to light and atmospheric contaminants	lifetime fiber performance for wear lifetime fiber performance for static lifetime stain removal lifetime colorfastness to light and atmospheric contaminants
BACKING WARRANTY	lifetime for tuft bind strength (edge ravel, yarn pulls, zippering) lifetime against delamination lifetime dimensional stability	10 year for tuft bind strength (edge ravel, yarn pulls, zippering) 10 year against delamination

MODULAR INSTALLATION METHODS



ashlar



basketweave



herringbone



parquet

STRAIGHT-FORWARD WARRANTIES				
Warranty: Installed with TileTabs	Warranty: Installed with Commercialon® Premium Adhesive (non-prorated)	Warranty: Installed with any other adhesive	Max RH, pH: Installed without Commercialon® Premium Sealer	Max RH, pH: Installed with Commercialon® Premium Sealer
Lifetime	Lifetime	1 Year	90% RH, pH 9	99% RH, pH 11 (Tiletabs) 97% RH, pH 11 (Commercialon® Adhesive)

Made in the U.S.A.

Can be installed Glue-Free with

Nexus® Tile Connectors

NSF SUSTAINABILITY CERTIFIED

CRI GREEN LABEL PLUS

©2024 J+J Flooring Group, LLC - This unique design is protected under the U.S. Copyright Act of 1976. Any unauthorized copying or duplication of this design constitutes copyright infringement in violation of federal law. Due to the unique visual characteristics of modular carpets, pattern repeats and pattern run-off seams may appear more noticeable than in broadloom carpets. Such visual characteristics do not constitute a manufacturing defect, and as such, should be considered when selecting modular carpet and its installation.

These photographs are representations of the installation for this modular product. Your modular installation may look different than these photos depending upon individual tile placement, lighting, and overall space layout, including furnishings. Final tile placement and the resulting visual is thus the customer’s, and not J+J Flooring’s responsibility.

MODULAR + BROADLOOM

QUICK SHIP OPTIONS



P.O. BOX 2207

DALTON, GA 30722

P 800 241 4586

F 706 275 4433

JJFLOORING.COM

JX4324M07

carpet | lvt | kinetex



FLOORING
A DIVISION OF ENGINEERED FLOORS