

MODULAR

QUICK SHIP

Bouclé Tweed Cardigan



FLOORING

Bouclé, Tweed, Cardigan



INSPIRATION

Inspired by timeless bouclé fabrics, the loop texture and striation of color in Bouclé creates a non-repetitive pattern that is very organic and fluid on the floor. The rugged texture and earthy colors make Tweed a classic, yet fresh and essential backdrop. Cardigan puts a contemporary spin on traditional craft with random, shifting striations and shadows of a subtle geometric. These select colorways coordinate beautifully and are now available as Quick Ship options.



[cover] CARDIGAN // TEXTURE STITCH // TWEED // STITCH // ashlar
[right] TWEED // PLEAT // herringbone // BOUCLÉ // KNOT // ashlar



BOUCLÉ // KNIT // herringbone



TWEED // PLEAT // herringbone



CARDIGAN // WARP STITCH // herringbone



CARDIGAN // KNIT STITCH // brick



(top right) TWEED // PLEAT // ashlar
(bottom right) BOUCLÉ // KNIT // ashtar



Bouclé

12"x48" MODULAR



QUICK SHIP
COLOR 2703
texture



QUICK SHIP
COLOR 2708
warp



QUICK SHIP
COLOR 2706
strand



QUICK SHIP
COLOR 2711
knit



QUICK SHIP
COLOR 2712
knot

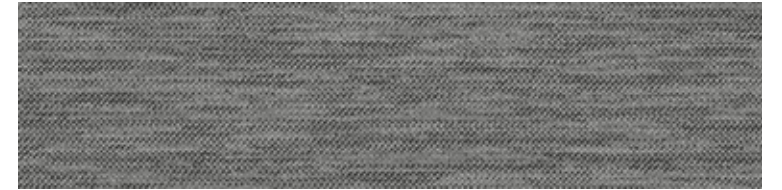


Tweed

12"x48" MODULAR



QUICK SHIP
COLOR 2978
stitch



QUICK SHIP
COLOR 2984
weft



QUICK SHIP
COLOR 2985
woolen



QUICK SHIP
COLOR 2983
serge



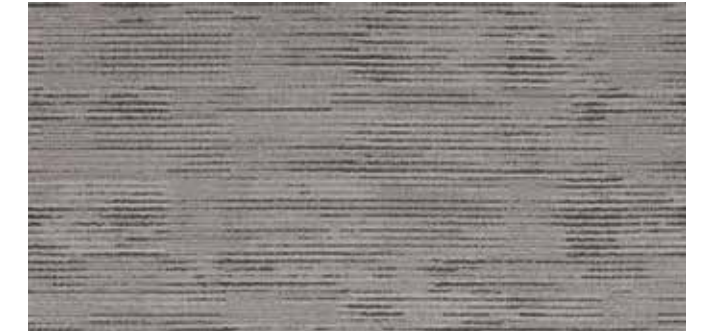
QUICK SHIP
COLOR 2979
pleat



Cardigan 18"x36" MODULAR



QUICK SHIP
COLOR 3337
texture stitch



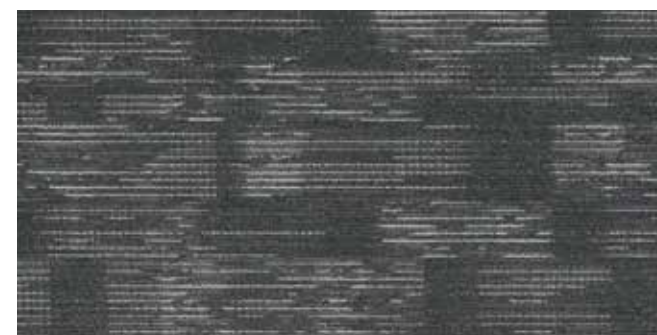
QUICK SHIP
COLOR 3339
warp stitch



QUICK SHIP
COLOR 3335
strand stitch



QUICK SHIP
COLOR 3333
knit stitch



QUICK SHIP
COLOR 3340
knot stitch

CARDIGAN // KNOT STITCH // ashlar
(back cover) TWEED // PLEAT // ashlar

THESE COLORS ARE AVAILABLE AS QUICK SHIP. Orders up to 1,500 square yards (13,500 sq. ft.) ship within 10 days.

FIBER

Encore® SD Ultima® Nylon (with recycled content) is specifically engineered to maximize appearance retention with exceptional color, performance, sustainability and practicality.

BACKINGS

Nexus® Modular products can be installed in a variety of ways and are performance engineered to be visually appealing. In addition, they are designed to accommodate your long-term flooring budget.

- » Manufactured in an ISO 14001 certified facility
- » Contains pre-consumer recycled content and contributes to LEED
- » Recyclable through the J+J Flooring’s R4 Carpet Reclamation Program

ADHESIVE

Commercialon® Premium Modular Adhesive
A high strength acrylic latex-based carpet adhesive specifically formulated for bonding modular PVC backed carpet to the floor. This premium adhesive is for use with all Nexus Modular Tile products. This adhesive is guaranteed for the lifetime of the installation when used in accordance with the J+J Flooring installation instructions. Commercialon® Premium Modular Adhesive meets the CRI Low-VOC Emission Criteria, CRI ID# PSA-425402. Commercialon® Premium Modular Adhesive is non toxic, has ultra-low odor and is antimicrobial in the dry state.

OPTIONAL:
TileTabs - High Tack Adhesive Tabs (modular only)

MOISTURE

Are high levels of moisture in your concrete slab causing issues with your project’s floor covering? We can help.

- » Nexus® Modular Carpet with TileTabs – 99% RH
- » Cost-efficient
- » Long-term performance
- » Straightforward, easy-to-understand warranty
- » Requires no special floor preparation

TECHNOLOGIES

ProTex® Anti-Soil Treatment
ProTex is a proprietary anti-soil treatment technology that is applied and bonded to the pile fiber to impede soiling and to improve cleanability. It is standard on all J+J Flooring products.

OPTIONAL:
ProSept® Antimicrobial
Sentir® Advanced Odor-Blocking Technology

STYLE	bouclé 7081 modular	tweed 7083 modular	cardigan 7591 modular
CONSTRUCTION	textured loop	textured loop	patterned loop
FIBER TYPE	100% Encore® SD Ultima® Nylon	100% Encore® SD Ultima® Nylon	100% Encore® SD Ultima® Nylon
DYE METHOD	solution dyed	solution dyed	solution dyed
OUNCE WEIGHT	25.0 oz/sy (848 grams/m2)	25.0 oz/sy (848 grams/m²)	26.0 oz./sy (882 grams/m²)
GAUGE	1/10 (3.94 rows/cm)	1/10 (3.94 rows/cm)	1/10 (3.94 rows/cm)
BACKING	Nexus® modular	Nexus® modular	Nexus® modular
SIZE	12” x 48” (30.5 cm x 122.0 cm)	12” x 48” (30.5 cm x 122.0 cm)	18” x 36” (45.72 cm x 91.44 cm)
PATTERN REPEAT	n/a	n/a	n/a
TOTAL THICKNESS (nominal average)	0.25 inches (0.635 cm)	0.25 inches (0.635 cm)	0.25 inches (0.635 cm)
SPECIAL TECHNOLOGY	ProTex® anti-soil treatment	ProTex® anti-soil treatment	ProTex® anti-soil treatment
OPTIONAL SPECIAL TECHNOLOGIES	ProSept® antimicrobial Sentir® advanced odor blocking treatment	ProSept® antimicrobial Sentir® advanced odor blocking treatment	ProSept® antimicrobial Sentir® advanced odor blocking treatment
PHYSICAL TESTING	flooring radiant panel (class 1) pill test – (passes) smoke density (less than 450 flaming) static generation – (less than 3.5 kv) ADA compliance (compliant for accessible routes)	flooring radiant panel (class 1) pill test – (passes) smoke density (less than 450 flaming) static generation – (less than 3.5 kv) ADA compliance (compliant for accessible routes)	flooring radiant panel (class 1) pill test – (passes) smoke density (less than 450 flaming) static generation – (less than 3.5 kv) ADA compliance (compliant for accessible routes)
FIBER WARRANTY	lifetime fiber performance for wear lifetime fiber performance for static lifetime stain removal lifetime colorfastness to light and atmospheric contaminants	lifetime fiber performance for wear lifetime fiber performance for static lifetime stain removal lifetime colorfastness to light and atmospheric contaminants	lifetime fiber performance for wear lifetime fiber performance for static lifetime stain removal lifetime colorfastness to light and atmospheric contaminants
BACKING WARRANTY	lifetime for tuft bind strength (edge ravel, yarn pulls, zippering) lifetime against delamination lifetime dimensional stability	lifetime for tuft bind strength (edge ravel, yarn pulls, zippering) lifetime against delamination lifetime dimensional stability	lifetime for tuft bind strength (edge ravel, yarn pulls, zippering) lifetime against delamination lifetime dimensional stability



©2021 J+J Flooring Group, LLC - This unique design is protected under the U.S. Copyright Act of 1976. Any unauthorized copying or duplication of this design constitutes copyright infringement in violation of federal law. Due to the unique visual characteristics of modular carpets, pattern repeats and pattern run-off seams may appear more noticeable than in broadloom carpets. Such visual characteristics do not constitute a manufacturing defect, and as such, should be considered when selecting modular carpet and its installation.

These photographs are representations of the installation for this modular product. Your modular installation may look different than these photos depending upon individual tile placement, lighting, and overall space layout, including furnishings. Final tile placement and the resulting visual is thus the customer’s, and not J+J Flooring’s responsibility.

MODULAR INSTALLATION METHODS



ashlar



basketweave



herringbone



parquet



parquet



basketweave



ashlar



herringbone



brick



monolithic



MODULAR

QUICK SHIP

P.O. BOX 2207
DALTON, GA 30722
P 800 241 4586
F 706 275 4433
JJFLOORING.COM
MX4121M05

carpet | lvt | kinetex



FLOORING
A DIVISION OF ENGINEERED FLOORS