

BROADLOOM

QUICK SHIP

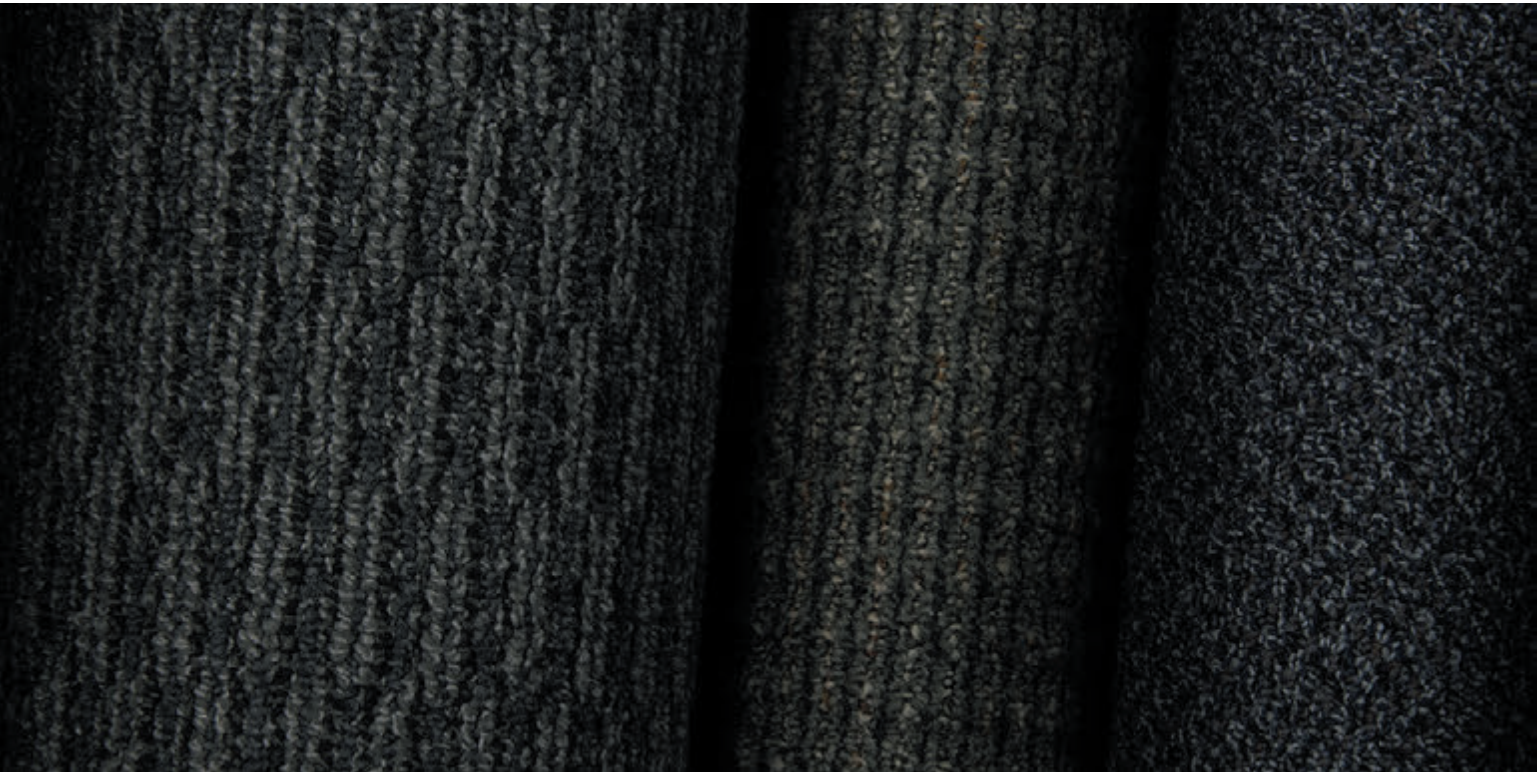
Fuse III  
Impulse III  
Merge III  
Mix III  
Structure  
Tone



FLOORING



Fuse III, Impulse III, Merge III,  
Mix III, Structure, Tone



**QUICK SHIP BROADLOOM**  
Sometimes schedules drive everything.  
For those times we offer a Quick Ship  
broadloom program. This program ensures  
that some of our most popular broadloom  
styles and colors will ship within 10 days for  
orders up to 1,500 sq. yrd. (13,500 sq. ft.).



[cover] **MERGE III** // **LINK** // broadloom  
[right] **MIX III** // **CONNECT** // broadloom

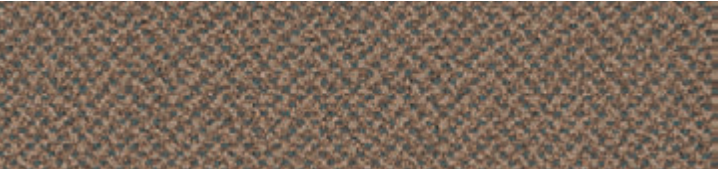




FUSE III // BLEND // broadloom

# Fuse III

BROADLOOM



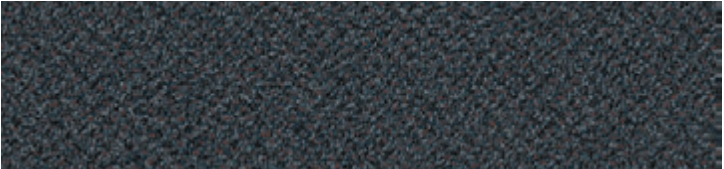
QUICK SHIP | COLOR 1452 | blend



QUICK SHIP | COLOR 1944 | link



QUICK SHIP | COLOR 1945 | integrate



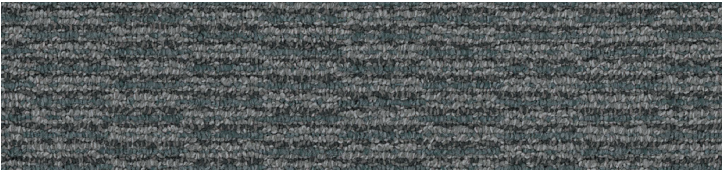
QUICK SHIP | COLOR 1947 | connect

# Merge III

BROADLOOM



QUICK SHIP | COLOR 1452 | blend



QUICK SHIP | COLOR 1944 | link



QUICK SHIP | COLOR 1945 | integrate



QUICK SHIP | COLOR 1947 | connect

# Mix III

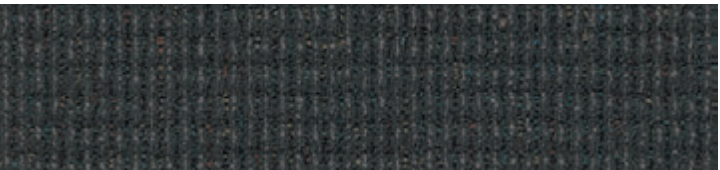
BROADLOOM



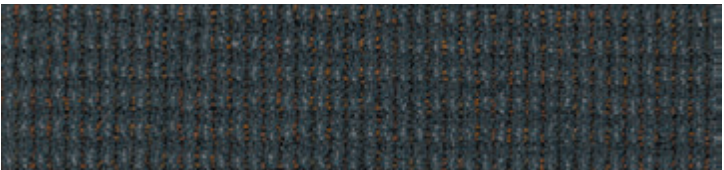
QUICK SHIP | COLOR 1452 | blend



QUICK SHIP | COLOR 1944 | link



QUICK SHIP | COLOR 1945 | integrate



QUICK SHIP | COLOR 1947 | connect



# Impulse III

BROADLOOM



QUICK SHIP | COLOR 1432 | give it a whirl



QUICK SHIP | COLOR 1808 | make a move



QUICK SHIP | COLOR 1811 | tell a tale



QUICK SHIP | COLOR 7412 | speak your mind

# Structure

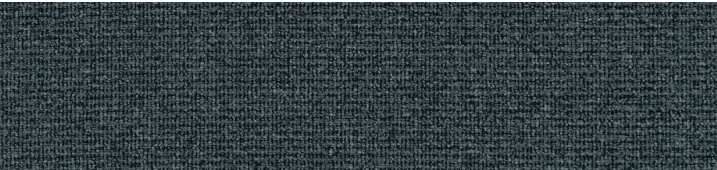
BROADLOOM



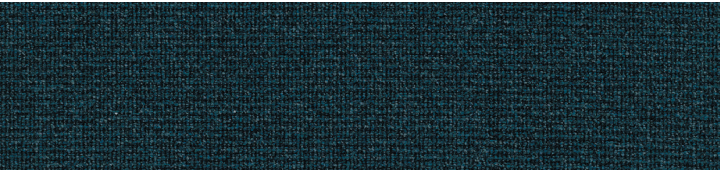
QUICK SHIP | COLOR 1800 | camber



QUICK SHIP | COLOR 1801 | pilaster



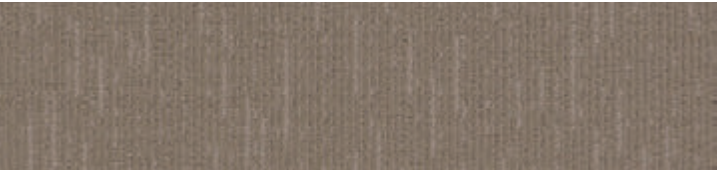
QUICK SHIP | COLOR 1804 | truss



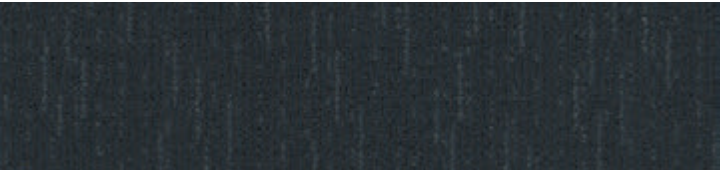
QUICK SHIP | COLOR 1806 | spandrel

# Tone

BROADLOOM



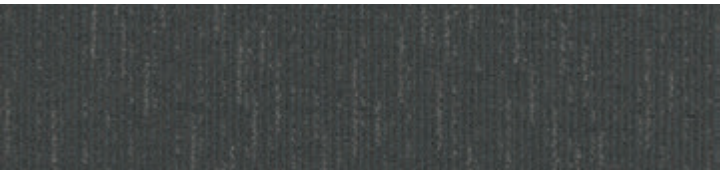
QUICK SHIP | COLOR 1752 | pitch



QUICK SHIP | COLOR 1756 | prelude



QUICK SHIP | COLOR 1757 | minuet



QUICK SHIP | COLOR 1758 | finale



TONE // PITCH // broadloom



IMPULSE III // SPEAK YOUR MIND // broadloom

STRUCTURE// PILASTER // broadloom  
[back cover] MIX III // LINK // broadloom



# Broadloom Quick Ship Color Combinations

mix III 3512



1452  
blend

merge III 3522



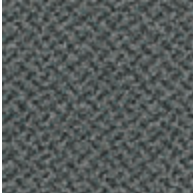
1452  
blend

fuse III 3532




1452  
blend

mix III 3512




1944  
link

merge III 3522



1944  
link

fuse III 3532



1944  
link

impulse III 2433



1432  
give it a whirl

structure 20100




1800  
camber

tone 2024




1752  
pitch

impulse III 2433




1808  
make a move

structure 20100



1801  
pilaster

tone 2024



1757  
minuet

mix III 3512



1947  
connect

merge III 3522



1947  
connect

fuse III 3532



1947  
connect

mix III 3512



1945  
integrate

merge III 3522



1945  
integrate

fuse III 3532



1945  
integrate

impulse III 2433



1811  
tell a tale

structure 20100



1806  
spandrel

tone 2024



1756  
prelude

impulse III 2433



7412  
speak your mind

structure 20100



1804  
truss

tone 2024



1758  
finale

FIBER

**Encore® BCF Nylon with ColorLoc® Plus** is manufactured to offer exceptional color, performance and appearance retention. Carpet using Encore BCF nylon with ColorLoc Plus - our patented stain resistant technology - is engineered to resist permanent staining and is backed by Lifetime Performance Warranties for stain resistance, colorfastness, color transfer, water bleed, bleach resistance and wear.

**Encore® SD Ultima® (with recycled content)** is specifically engineered to maximize appearance retention with exceptional color, performance, sustainability and practicality.

BACKINGS

**PremierBac® Plus** is standard on broadloom products and provides superior construction to ensure solid dimensional stability for broadloom carpets.

- » Stretch-in or glue-down installation
- » Manufactured in an ISO 14001 certified facility
- » Contains pre-consumer recycled content and contributes to LEED
- » Recyclable through the J+J Flooring's R4 Carpet
- » Reclamation Program

ADHESIVE

**Commercialon® Premium Carpet Adhesive** is formulated for the most demanding interior carpet installations. It forms a powerful bond with stiff and heavy backed commercial carpets directly over approved substrates. It is quick setting, features antimicrobial protection and can be removed easily. This solvent free adhesive is also low in odor, meeting the low VOC emission criteria of the CRI Green Label Plus Indoor Air Quality. Commercialon Premium Adhesive is for use with broadloom PremierBac® Plus and Endure® Plus backing systems.

TECHNOLOGIES

**ProTex® Anti-Soil Treatment**  
ProTex is a proprietary anti-soil treatment technology that is applied and bonded to the pile fiber to impede soiling and to improve cleanability. It is standard on all J+J Flooring products.

OPTIONAL:  
**ProSept® Antimicrobial**  
**Sentir® Advanced Odor-Blocking Technology**

STYLE	fuse III 3532 broadloom	impulse III 2433 broadloom	merge III 3522 broadloom
CONSTRUCTION	patterned loop	patterned loop	patterned loop
FIBER TYPE	100% Encore® SD Ultima® nylon	100% Encore® BCF nylon with ColorLoc® Plus	100% Encore® SD Ultima® nylon
DYE METHOD	solution dyed	solution/yarn dyed	solution dyed
OUNCE WEIGHT	19.0 oz./sy (644 grams/m2)	20.0 oz./sy (678 grams/m2)	19.0 oz./sy (644 grams/m2)
GAUGE	1/10 (3.94 rows/cm)	1/10 (3.94 rows/cm)	1/10 (3.94 rows/cm)
PATTERN REPEAT	3/4" W x 2" L (1.90 cm W x 5.08 cm L)	N/A	7/8" W x 3.75" L (2.22 cm W x 9.53 cm L)
TOTAL THICKNESS (nominal average)	0.28 inches (0.71 cm)	0.25 inches (0.635 cm)	0.28 inches (0.71 cm)
BACKING	PremierBac® Plus	PremierBac® Plus	PremierBac® Plus
SPECIAL TECHNOLOGY	ProTex® anti-soil treatment	ProTex® anti-soil treatment	ProTex® anti-soil treatment
SIZE	12 feet (3.66 m)	12 feet (3.66 m)	12 feet (3.66 m)
PHYSICAL TESTING	flooring radiant panel (class 1) pill test – (passes) smoke density (less than 450 flaming) static generation -(less than 3.5 kv) ADA compliance (compliant for accessible routes)	flooring radiant panel (class 1) pill test – (passes) smoke density (less than 450 flaming) static generation -(less than 3.5 kv) ADA compliance (compliant for accessible routes)	flooring radiant panel (class 1) pill test – (passes) smoke density (less than 450 flaming) static generation -(less than 3.5 kv) ADA compliance (compliant for accessible routes)
FIBER WARRANTY	lifetime fiber performance for wear lifetime fiber performance for static lifetime stain removal lifetime colorfastness to light and atmospheric contaminants	lifetime fiber performance for wear lifetime fiber performance for static lifetime stain removal lifetime colorfastness to light and atmospheric contaminants	lifetime fiber performance for wear lifetime fiber performance for static lifetime stain removal lifetime colorfastness to light and atmospheric contaminants
BACKING WARRANTY	10 year for tuft bind strength (edge ravel, yarn pulls, zippering) 10 year against delamination	10 year for tuft bind strength (edge ravel, yarn pulls, zippering) 10 year against delamination	10 year for tuft bind strength (edge ravel, yarn pulls, zippering) 10 year against delamination

STYLE	mix III 3512 broadloom	structure 20100 broadloom	tone 2024 broadloom
CONSTRUCTION	patterned loop	textured loop	textured loop
FIBER TYPE	100% Encore® BCF nylon	100% Encore® SD Ultima® nylon	100% Encore® SD Ultima® nylon
DYE METHOD	solution/yarn dyed	solution dyed	solution dyed
OUNCE WEIGHT	19.0 oz./sy (644 grams/m2)	20.0 oz./sy (678 grams/m2)	16.0 oz./sy (543 grams/m2)
GAUGE	1/10 (3.94 rows/cm)	1/10 (3.94 rows/cm)	1/12 (4.72 rows/cm)
PATTERN REPEAT	1/2" W x 3/4" L (1.27 cm W x 1.90 cm L)	1/4" W x 1/4" L approx. (.635 cm W x .635 cm L)	36" W x 21.625" L (91.44 cm W x 54.92 cm L)
TOTAL THICKNESS (nominal average)	0.28 inches (0.71 cm)	0.28 inches (0.71 cm)	0.218 inches (0.55 cm)
BACKING	PremierBac® Plus	PremierBac® Plus	PremierBac® Plus
SPECIAL TECHNOLOGY	ProTex® anti-soil treatment	ProTex® anti-soil treatment	ProTex® anti-soil treatment
SIZE	12 feet (3.66 m)	12 feet (3.66 m)	12 feet (3.66 m)
PHYSICAL TESTING	flooring radiant panel (class 1) pill test – (passes) smoke density (less than 450 flaming) static generation -(less than 3.5 kv) ADA compliance (compliant for accessible routes)	flooring radiant panel (class 1) pill test – (passes) smoke density (less than 450 flaming) static generation -(less than 3.5 kv) ADA compliance (compliant for accessible routes)	flooring radiant panel (class 1) pill test – (passes) smoke density (less than 450 flaming) static generation -(less than 3.5 kv) ADA compliance (compliant for accessible routes)
FIBER WARRANTY	lifetime fiber performance for wear lifetime fiber performance for static lifetime stain removal lifetime colorfastness to light and atmospheric contaminants	lifetime fiber performance for wear lifetime fiber performance for static lifetime stain removal lifetime colorfastness to light and atmospheric contaminants	lifetime fiber performance for wear lifetime fiber performance for static lifetime stain removal lifetime colorfastness to light and atmospheric contaminants
BACKING WARRANTY	10 year for tuft bind strength (edge ravel, yarn pulls, zippering) 10 year against delamination	10 year for tuft bind strength (edge ravel, yarn pulls, zippering) 10 year against delamination	10 year for tuft bind strength (edge ravel, yarn pulls, zippering) 10 year against delamination

©2016 J+J Flooring Group, LLC - This unique design is protected under the U.S. Copyright Act of 1976. Any unauthorized copying or duplication of this design constitutes copyright infringement in violation of federal law. Due to the unique visual characteristics of modular carpets, pattern repeats and pattern run-off seams may appear more noticeable than in broadloom carpets. Such visual characteristics do not constitute a manufacturing defect, and as such, should be considered when selecting modular carpet and its installation.

These photographs are representations of the installation for this modular product. Your modular installation may look different than these photos depending upon individual tile placement, lighting, and overall space layout, including furnishings. Final tile placement and the resulting visual is thus the customer's, and not J+J Flooring's responsibility.





BROADLOOM

QUICK SHIP



P.O. BOX 2207

DALTON, GA 30722

P 800 241 4586

F 706 275 4433

JJFLOORING.COM

carpet | lvt | kinetex



**FLOORING**  
A DIVISION OF ENGINEERED FLOORS