

Cameo II



FLOORING

Cameo II



INSPIRATION

With its intriguingly soft grid layered over saturated neutrals, Cameo II sets the stage for a flawlessly choreographed interior. Eleven colorways in 24" x 24" carpet tiles feature a variety of yarn constructions - some with subtle sheen, others with delicate wool-like twists. This plush, modern texture doesn't overpower a room, but provides the perfect backdrop of depth and color.



(cover) CAMEO II // BUELLER // monolithic
(right) CAMEO II // NORMAN // monolithic



Cameo II

24" X 24" MODULAR + BROADLOOM



COLOR 1995
norman



COLOR 1996
bourne



COLOR 1997
skywalker



COLOR 1998
stella



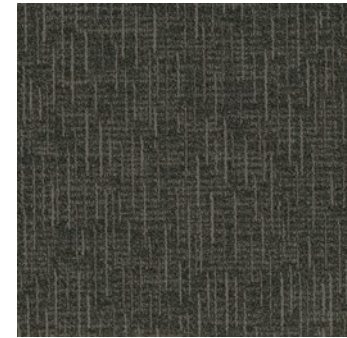
COLOR 1999
atticus



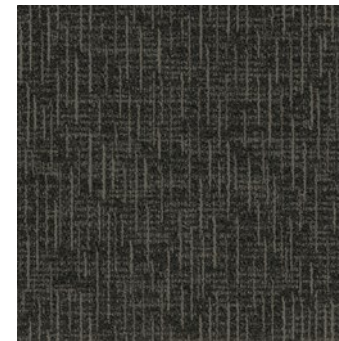
COLOR 2000
powers



COLOR 2001
katniss



COLOR 2002
scout



COLOR 2003
bueller



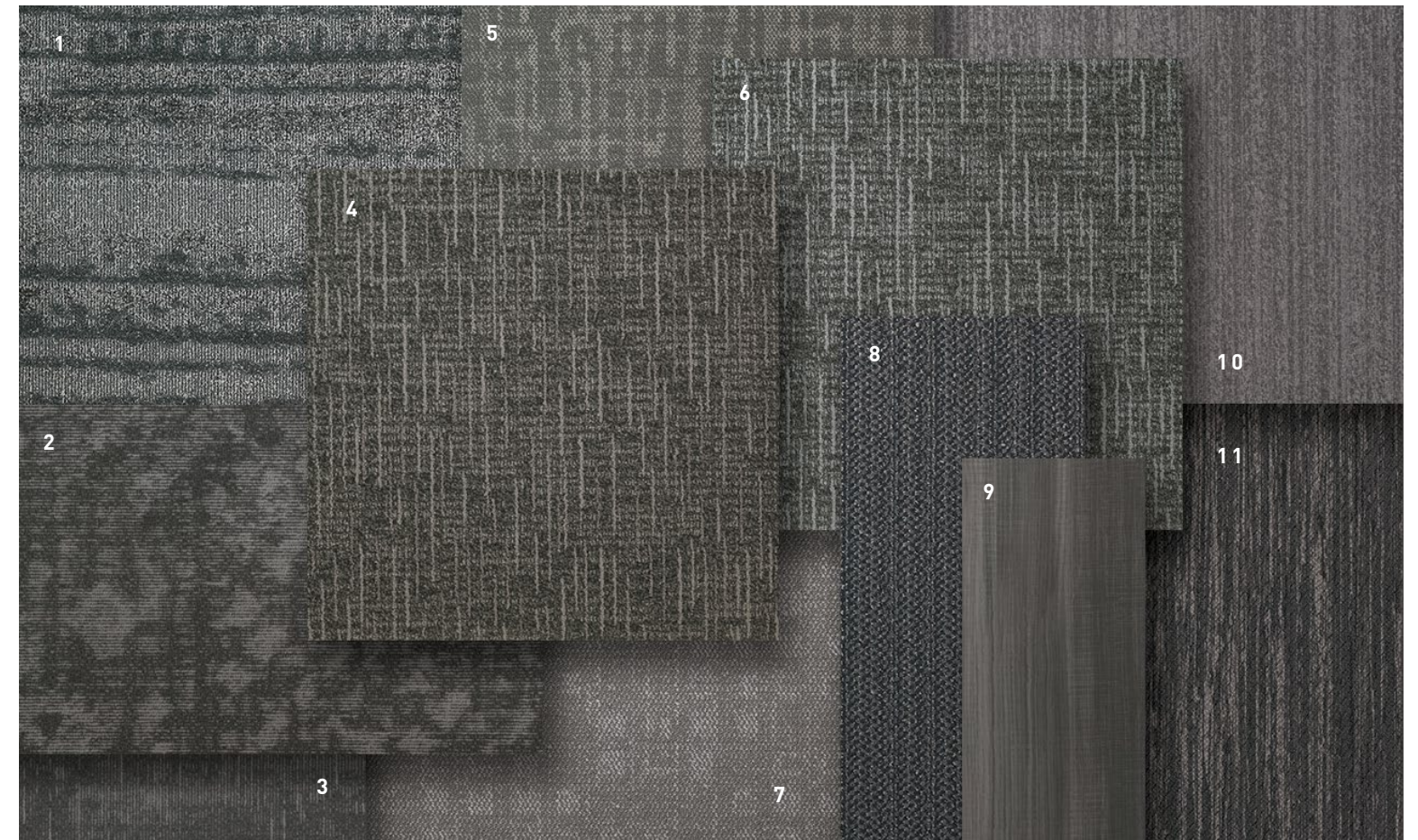
COLOR 2005
shaft



COLOR 2006
vader



CAMEO II // BUELLER // NORMAN (INSET) /// monolithic



COORDINATES

Beyond the beauty of individual products, our flooring coordinates effortlessly across all of our product platforms - modular carpet tile, broadloom, LVT and Kinetex textile composite flooring. This offering enables you to blend a range of designs with tonal simplicity to create palettes that reflect the demands of each unique space.

- | |
|--|
| 1. STACKED II // 7581 // 2233 Arches // Modular |
| 2. ADJUST // 7601 // 3274 Carbon Path // Modular |
| 3. ADAPT // 7602 // 3274 Carbon Path // Modular |
| 4. CAMEO II // 7949 + 9349 // 2000 Powers // Modular + Broadloom |
| 5. NATURALIST // 7572 // 3237 Smoke // Modular |
| 6. CAMEO II // 7949 + 9349 // 2005 Shaft // Modular + Broadloom |
| 7. OXFORD // 7063 // 2400 Flocked // Modular |
| 8. JACK // 7914 // 3430 Fitting // Modular |
| 9. MAKE YOUR MARK // V5102 + V5103 // 1064 Smoke // LVT |
| 10. COLOR ZONE // 7479 // 3225 Pepper // Modular |
| 11. AGAINST THE GRAIN // 1840 // 2824 Milo // Kinetex |



CAMEO II // SHAFT // broadloom
[back cover] CAMEO II // BUELLER // modular

FIBER

Encore® SD Nylon (with recycled content) is specifically engineered to maximize appearance retention with exceptional color, performance, sustainability and practicality.

Encore® Nylon with ColorLoc® Plus is manufactured to offer exceptional color, performance and appearance retention. Carpet using Encore nylon with ColorLoc Plus - our patented stain resistant technology - is engineered to resist permanent staining and is backed by Lifetime Performance Warranties for stain resistance, colorfastness, color transfer,water bleed, bleach resistance and wear.

MOISTURE

Are high levels of moisture in your concrete slab causing issues with your project’s floor covering? We can help.

- » Nexus® Modular Carpet with TileTabs – 99% RH
- » Cost-efficient
- » Long-term performance
- » Straightforward, easy-to-understand warranty
- » Requires no special floor preparation

BACKINGS

Nexus® Modular products can be installed in a variety of ways and are performance engineered to be visually appealing. In addition, they are designed to accommodate your long-term flooring budget.

- » Manufactured in an ISO 14001 certified facility
- » Contains pre-consumer recycled content and contributes to LEED
- » Recyclable through the J+J Flooring’s R4 Carpet Reclamation Program

PremierBac® Plus is standard on broadloom products and provides superior construction to ensure solid dimensional stability for broadloom carpets.

- » Stretch-in or glue-down installation
- » Manufactured in an ISO 14001 certified facility
- » Contains pre-consumer recycled content and contributes to LEED
- » Recyclable through the J+J Flooring R4 Carpet Reclamation Program

TECHNOLOGIES

ProTex® Anti-Soil Treatment
ProTex is a proprietary anti-soil treatment technology that is applied and bonded to the pile fiber to impede soiling and to improve cleanability. It is standard on all J+J Flooring products.

OPTIONAL:
ProSept® Antimicrobial
Sentir® Advanced Odor-Blocking Technology

ADHESIVE

Commercialon® Premium Carpet Adhesive is formulated for the most demanding interior carpet installations. It forms a powerful bond with stiff and heavy backed commercial carpets directly over approved substrates. It is quick setting, features antimicrobial protection and can be removed easily. This solvent free adhesive is also low in odor, meeting the low VOC emission criteria of the CRI Green Label Plus Indoor Air Quality. Commercialon Premium Adhesive is for use with broadloom PremierBac Plus, TitanBac® Plus and Endure Plus backings systems.

Commercialon® Premium Modular Adhesive is a high strength acrylic latex-based carpet adhesive specifically formulated for bonding modular PVC backed carpet to the floor. This premium adhesive is for use with all Nexus Modular Tile products. This adhesive is guaranteed for the lifetime of the installation when used in accordance with the J+J Flooring installation instructions. Commercialon® Premium Modular Adhesive meets the CRI Low-VOC Emission Criteria, CRI ID# PSA-425402. Commercialon® PremiumModular Adhesive is non toxic, has ultra-low odor and is antimicrobial in the dry state.

OPTIONAL:
Commercialon® High Moisture Adhesive
TileTabs - High Tack Adhesive Tabs (modular only)

STYLE	cameo II 7949 modular	cameo II 9349 broadloom
CONSTRUCTION	textured patterned loop	textured patterned loop
FIBER TYPE	Encore® SD Nylon & Encore® Nylon with ColorLoc® Plus	Encore® SD Nylon & Encore® Nylon with ColorLoc® Plus
DYE METHOD	solution / yarn dyed	solution / yarn dyed
OUNCE WEIGHT	28.0 oz./sy (949 grams/m2)	28.0 oz./sy (949 grams/m2)
GAUGE	1/12 (4.72 rows/cm)	1/12 (4.72 rows/cm)
BACKING	Nexus® modular	PremierBac® Plus
SIZE	24” x 24” (61 cm x 61 cm)	12 feet (3.66 m)
PATTERN REPEAT	n/a	24” W x 24” L
TOTAL THICKNESS (nominal average)	0.28 inches (0.71 cm)	0.28 inches (0.71 cm)
SPECIAL TECHNOLOGY	ProTex® anti-soil treatment	ProTex® anti-soil treatment
OPTIONAL SPECIAL TECHNOLOGIES	ProSept® antimicrobial	ProSept® antimicrobial
	Sentir® advanced odor blocking treatment	Sentir® advanced odor blocking treatment
PHYSICAL TESTING	flooring radiant panel (class 1)	flooring radiant panel (class 1)
	pill test – (passes)	pill test – (passes)
	smoke density (less than 450 flaming)	smoke density (less than 450 flaming)
	static generation (less than 3.5 kv)	static generation (less than 3.5 kv)
	ADA compliance (compliant for accessible routes)	ADA compliance (compliant for accessible routes)
FIBER WARRANTIES	lifetime fiber performance for wear	lifetime fiber performance for wear
	lifetime fiber performance for static	lifetime fiber performance for static
	lifetime stain removal	lifetime stain removal
	colorfastness to light and atmospheric contaminants	colorfastness to light and atmospheric contaminants
BACKING WARRANTIES	lifetime for tuft bind strength (edge ravel, yarn pulls, zippering)	lifetime for tuft bind strength (edge ravel, yarn pulls, zippering)
	lifetime against delamination	lifetime against delamination
	lifetime dimensional stability	lifetime dimensional stability

MODULAR INSTALLATION METHODS



ashlar



brick



monolithic



quarter turn



©2023 J+J Flooring Group, LLC - This unique design is protected under the U.S. Copyright Act of 1976. Any unauthorized copying or duplication of this design constitutes copyright infringement in violation of federal law. Due to the unique visual characteristics of modular carpets, pattern repeats and pattern run-off seams may appear more noticeable than in broadloom carpets. Such visual characteristics do not constitute a manufacturing defect, and as such, should be considered when selecting modular carpet and its installation.

These photographs are representations of the installation for this modular product. Your modular installation may look different than these photos depending upon individual tile placement, lighting, and overall space layout, including furnishings. Final tile placement and the resulting visual is thus the customer’s, and not J+J Flooring’s responsibility.



P.O. BOX 2207
DALTON, GA 30722
P 800 241 4586
F 706 275 4433
JJFLOORING.COM

carpet | lvt | kinetex