

COLOR WASH COLLECTION

Brushlight Tintwave



COLOR WASH COLLECTION

Brushlight Tintwave



INSPIRATION

Inspired by the natural flow of color as it blends, drifts, and settles, Color Wash captures the quiet beauty of pigment in motion.

The collection is available in two styles—**Brushlight** and **Tintwave**, each offered in **18" x 36" tiles**. Soft transitions and layered tones create a sense of organic movement, bringing calm energy and subtle visual interest to thoughtfully designed commercial spaces.



[cover] BRUSHLIGHT // DARK TAUPE // ashlar
TINTWAVE // DARK TAUPE ACCENT // ashlar
[right] TINTWAVE // DARK TAUPE ACCENT // ashlar



TINTWAVE // DARK TAUPE ACCENT // ashlar
BRUSHLIGHT // RUST // ashlar



BRUSHLIGHT // INDIGO // brick



BRUSHLIGHT // INDIGO // brick



TINTWAVE // INDIGO ACCENT // brick



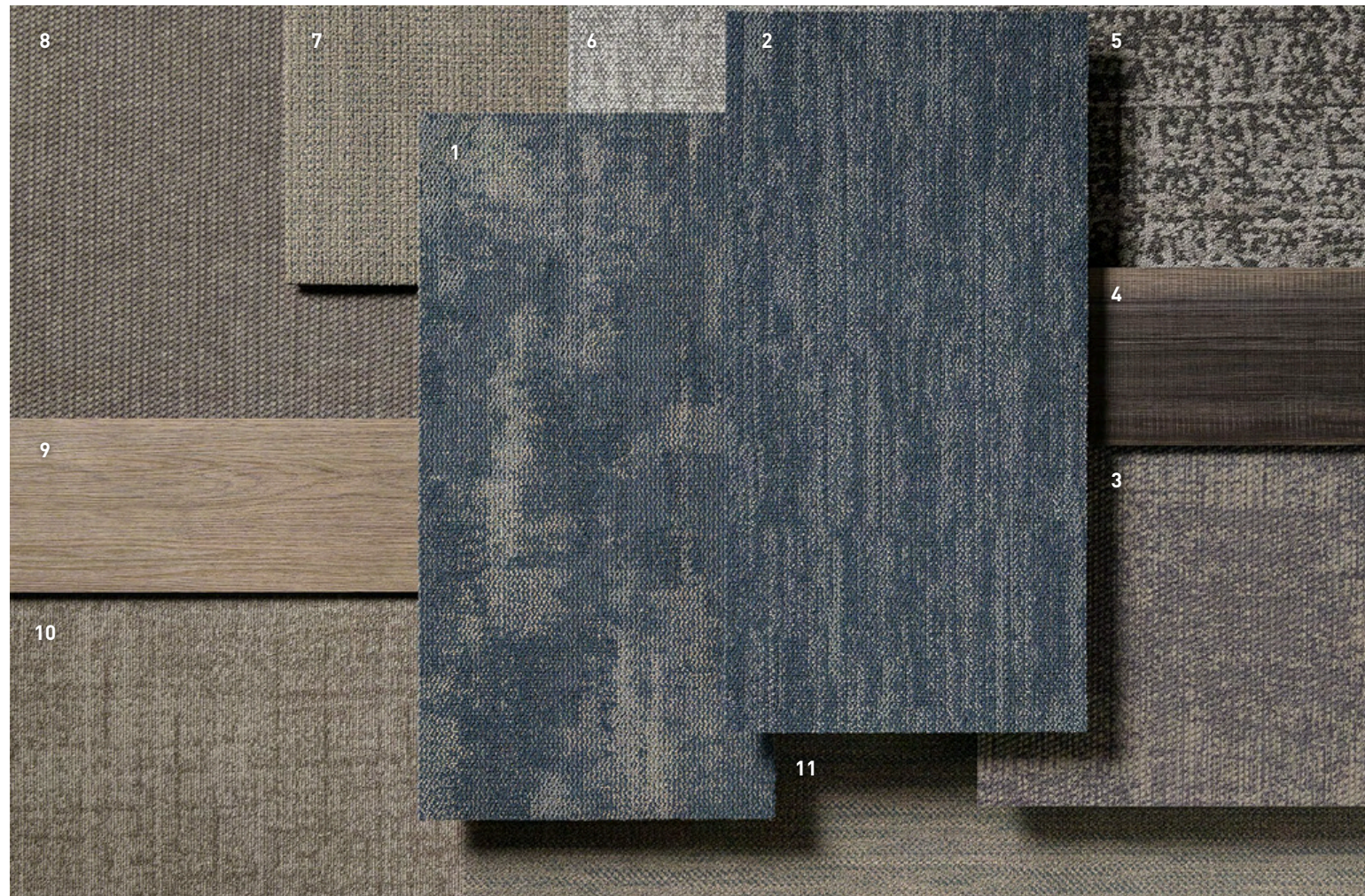
TINTWAVE // INDIGO ACCENT // brick



COORDINATES

Beyond the beauty of individual products, our flooring coordinates effortlessly across all of our product platforms - modular carpet tile, broadloom, LVT and Kinetex textile composite flooring. This offering enables you to blend a range of designs with tonal simplicity to create palettes that reflect the demands of each unique space.

- | | |
|--|---|
| 1. BRUSHLIGHT // 7515 // #3784 Beige // Modular | 7. AGAINST THE GRAIN // 1840 // #2825 Millet // Kinetex |
| 2. TINTWAVE // 7516 // #3797 Beige Accent // Modular | 8. CURATE // 7508 // #3689 Driftwood // Modular |
| 3. CURATE // 7508 // #3687 Morning Light // Modular | 9. RETREAT // V5056 + V5057 // #1194 Cultural // LVT |
| 4. REED // 7800 // #3623 Fawn // Modular | 10. TECHNIQUE // 7804 // #3676 Sand // Modular |
| 5. PROVISION // 1831 // #2277 Procurement // Kinetex | 11. METAMORPHIC // 7717 // #2960 Feldspar // Modular |
| 6. COLOR ZONE // 7479 // #3222 Carbon // Modular | |



COORDINATES

Beyond the beauty of individual products, our flooring coordinates effortlessly across all of our product platforms - modular carpet tile, broadloom, LVT and Kinetex textile composite flooring. This offering enables you to blend a range of designs with tonal simplicity to create palettes that reflect the demands of each unique space.

1. BRUSHLIGHT // 7515 // #3787 Teal // Modular

2. TINTWAVE // 7516 // #3800 Teal Accent // Modular

3. NETWORK // 1842 // #2853 Cyber // Kinetex

4. FUSION // V5006 // #1051 Blend // LVT

5. METAMORPHIC // 7717 // #2967 Shale // Modular

6. CURATE // 7508 // #3693 August Evening // Modular

7. BOUCLÉ II // 3081 + 7081 // #2704 Variegated // Broadloom + Modular

8. PROVISION // 1831 // #2277 Procurement // Kinetex

9. SIGNATURE II // V5028 // #1107 Principle // LVT

10. ELEMENTAL // 7683 // #2635 Raw // Modular

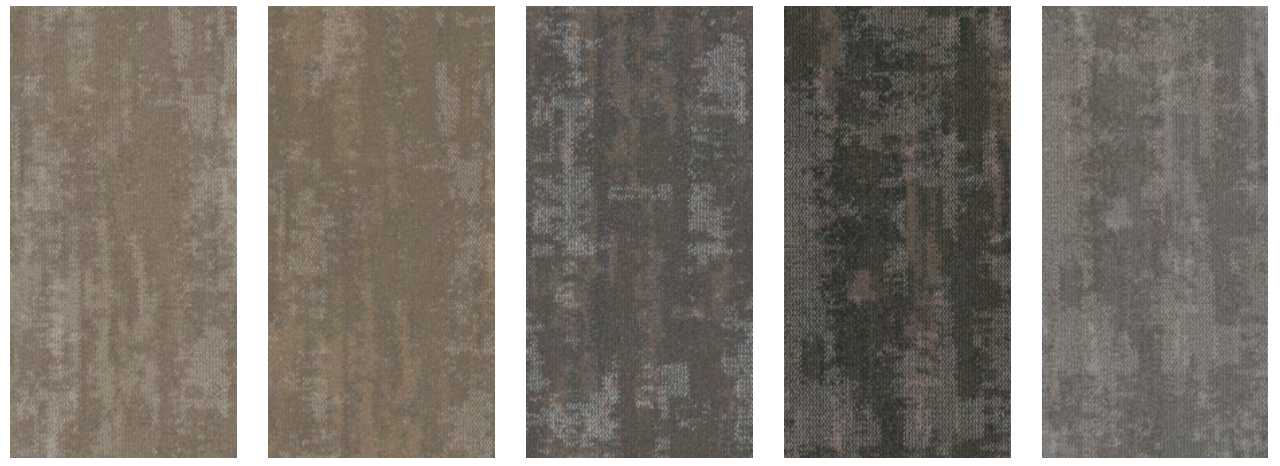
11. TWEED // 7083 // #2986 Measure // Modular



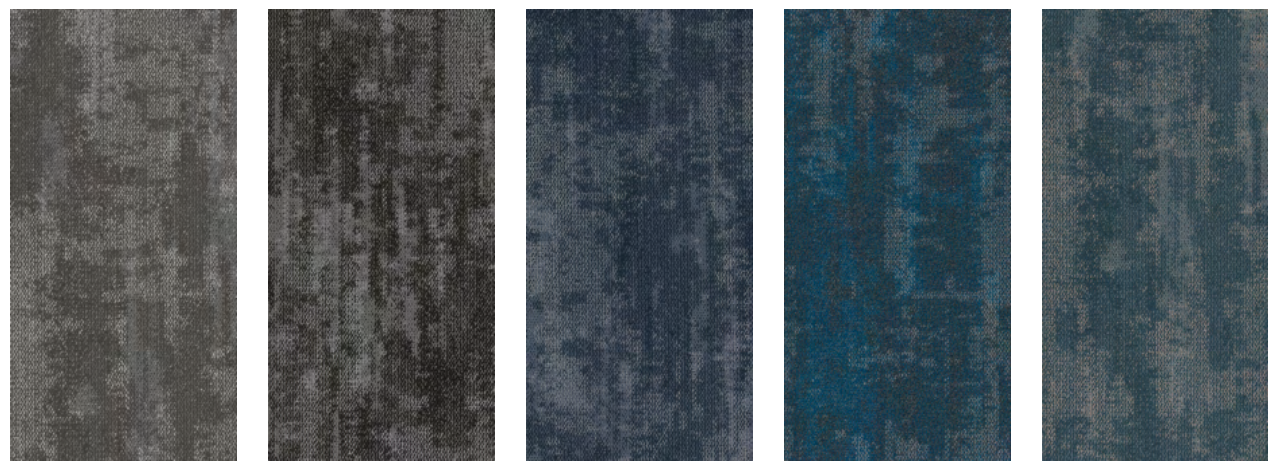
BRUSHLIGHT // TEAL // ashlar
NETWORK // CYBER // ashlar



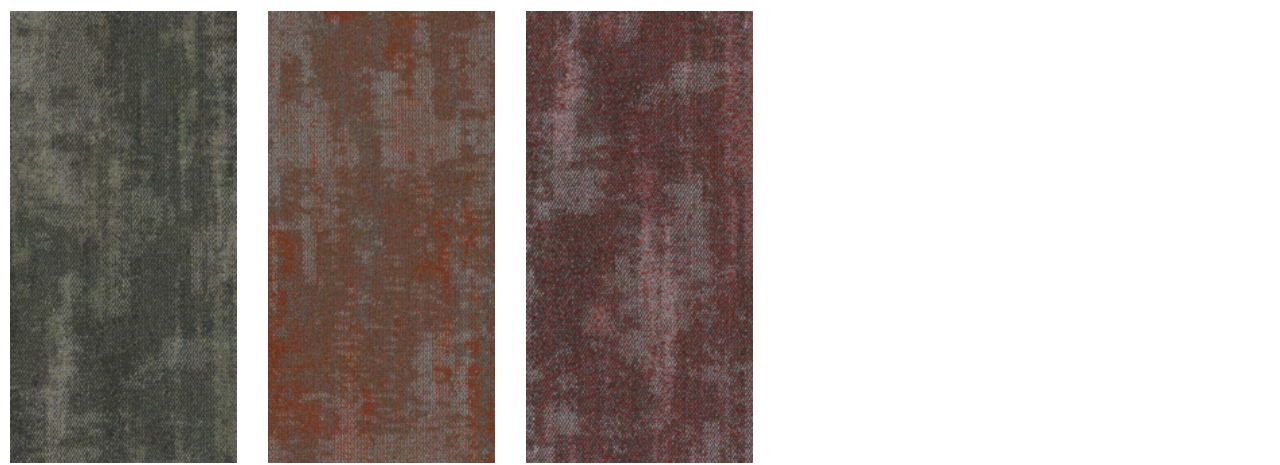
Brushlight 18" X 36" MODULAR



COLOR 3790 almond
 COLOR 3784 beige
 COLOR 3785 dark taupe
 COLOR 3796 ember
 COLOR 3793 light grey



COLOR 3792 dark grey
 COLOR 3789 black
 COLOR 3786 indigo
 COLOR 3794 bright blue
 COLOR 3787 teal

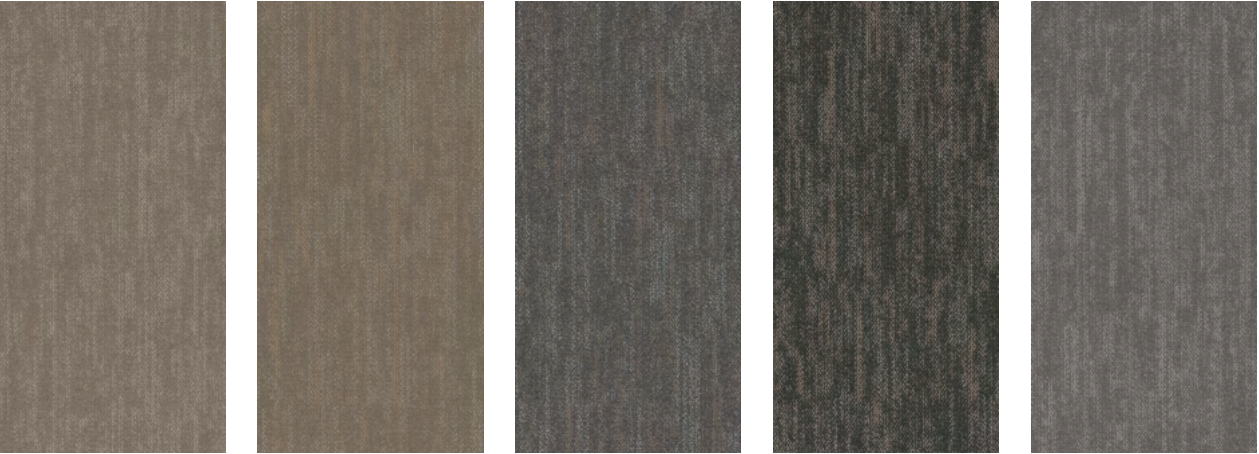


COLOR 3791 green
 COLOR 3788 rust
 COLOR 3795 wine

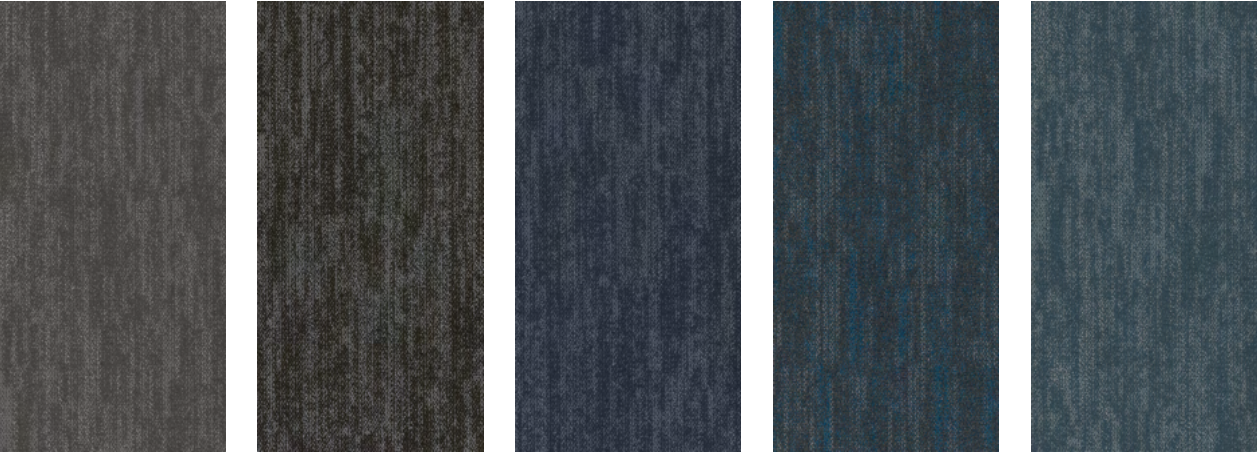


BRUSHLIGHT // RUST // ashlar
TINTWAVE // RUST ACCENT // ashlar

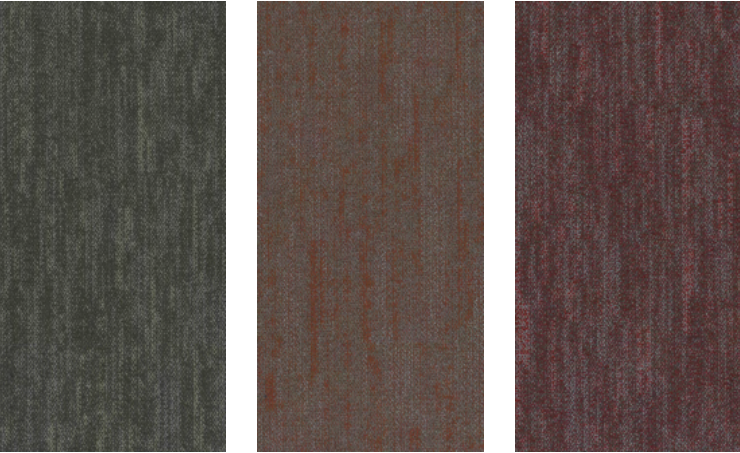
Tintwave 18" X 36" MODULAR



COLOR 3803 almond accent
 COLOR 3797 beige accent
 COLOR 3798 dark taupe accent
 COLOR 3809 ember accent
 COLOR 3806 light grey accent



COLOR 3805 dark grey accent
 COLOR 3802 black accent
 COLOR 3799 indigo accent
 COLOR 3807 bright blue accent
 COLOR 3800 teal accent



COLOR 3804 green accent
 COLOR 3801 rust accent
 COLOR 3808 wine accent





BRUSHLIGHT // DARK TAUPE // ashlar
TINTWAVE // DARK TAUPE ACCENT // ashlar
(back cover) BRUSHLIGHT // TEAL // ashlar
TINTWAVE // TEAL ACCENT // ashlar

FIBER

Encore® SD Ultima® Nylon (with recycled content) is specifically engineered to maximize appearance retention with exceptional color, performance, sustainability, and practicality.

FIBER OPTION

Encore® 100
The high recycled content incorporated into Encore 100 nylon provides a reduced environmental impact without compromising quality or color clarity.

- » 100% post-industrial (pre-consumer) recycled content
- » Full inclusion into the J+J Flooring Reclamation Program
- » Lifetime warranty for stain removal, colorfastness, wear and static
- » See sales rep for for availability and price

MOISTURE

Are high levels of moisture in your concrete slab causing issues with your project’s floor covering? We can help.

- » Nexus® Modular Carpet with TileTabs – 99% RH
- » Cost-efficient
- » Long-term performance
- » Straightforward, easy-to-understand warranty
- » Requires no special floor preparation

STANDARD BACKING

Nexus® Modular products can be installed in a variety of ways and are performance engineered to be visually appealing. In addition, they are designed to accommodate your long-term flooring budget.

» Manufactured in an ISO 14001 certified facility

» Contains pre-consumer recycled content and contributes to LEED and other sustainable building standards

» Eligible for landfill diversion through the J+J Flooring Reclamation Program

OPTIONAL BACKING:
Advance Modular Carpet Backing™ is engineered to provide outstanding performance, protection and stability that is required of modular carpet systems.

» PVC-Free

» Contains recycled content and contributes to LEED

» Eligible for landfill diversion through the J+J Flooring Reclamation Program

OTHER BACKING OPTIONS:

- Nexus® Cushion**
- Nexus® FC Cushion**



Scan QR Code for backing details

TECHNOLOGIES

ProTex® Anti-Soil Treatment
ProTex is a proprietary anti-soil treatment technology that is applied and bonded to the pile fiber to impede soiling and to improve cleanability. It is standard on all J+J Flooring products.

OPTIONAL:
ProSept® Antimicrobial
Sentir® Advanced Odor-Blocking Technology

ADHESIVE

Commercialon® Premium Modular Adhesive
A high strength acrylic latex-based carpet adhesive specifically formulated for bonding modular PVC backed carpet to the floor. This premium adhesive is for use with all Nexus Modular Tile products. This adhesive is guaranteed for the life of the installation when used in accordance with the J+J Flooring Carpet Installation Handbook.

Commercialon® Premium Modular Adhesive meets the CRI Low-VOC Emission Criteria, CRI ID# PSA425402. Commercialon® Premium Modular Adhesive is non toxic, has ultra-low odor and is antimicrobial in the dry state.

OPTIONAL:
TileTabs - High Tack Adhesive Tabs (modular only)

STYLE

STYLE	brushlight 7515 modular	tintwave 7516 modular
CONSTRUCTION	patterned loop	patterned loop
FIBER TYPE	100% Encore® SD Ultima® Nylon	100% Encore® SD Ultima® Nylon
FIBER OPTION	Encore® 100	Encore® 100
DYE METHOD	solution dyed	solution dyed
OUNCE WEIGHT	20.0 oz./sy (678 grams/m ²)	20.0 oz./sy (678 grams/m ²)
GAUGE	1/12 (4.72 rows/cm)	1/12 (4.72 rows/cm)
STANDARD BACKING	Nexus® Modular	Nexus® Modular
OPTIONAL BACKING	Advance Modular	Advance Modular
SIZE	18" x 36" (45.72 cm x 91.44 cm)	18" x 36" (45.72 cm x 91.44 cm)
TOTAL THICKNESS (nomial average)	.218 inches (.55cm)	.218 inches (.55cm)

SPECIAL TECHNOLOGY

SPECIAL TECHNOLOGY	ProTex® anti-soil treatment	ProTex® anti-soil treatment
OPTIONAL SPECIAL TECHNOLOGIES	ProSept® antimicrobial	ProSept® antimicrobial
	Sentir® advanced odor blocking treatment	Sentir® advanced odor blocking treatment

PHYSICAL TESTING

PHYSICAL TESTING	flooring radiant panel (class 1)	flooring radiant panel (class 1)
	pill test – (passes)	pill test – (passes)
	smoke density (less than 450 flaming)	smoke density (less than 450 flaming)
	static generation – (less than 3.5 kv)	static generation – (less than 3.5 kv)
	ADA compliance (compliant for accessible routes)	ADA compliance (compliant for accessible routes)

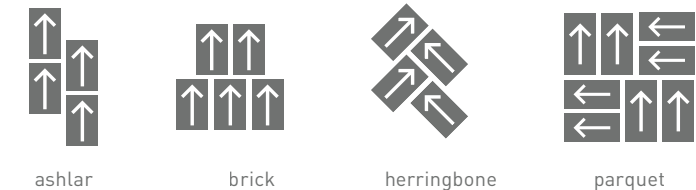
FIBER WARRANTY

FIBER WARRANTY	lifetime fiber performance for wear	lifetime fiber performance for wear
	lifetime fiber performance for static	lifetime fiber performance for static
	lifetime stain removal	lifetime stain removal
	lifetime colorfastness to light and atmospheric contaminants	lifetime colorfastness to light and atmospheric contaminants

BACKING WARRANTY

BACKING WARRANTY	lifetime for tuft bind strength (edge ravel, yarn pulls, zippering)	lifetime for tuft bind strength (edge ravel, yarn pulls, zippering)
	lifetime against delamination	lifetime against delamination
	lifetime dimensional stability	lifetime dimensional stability

MODULAR INSTALLATION METHODS



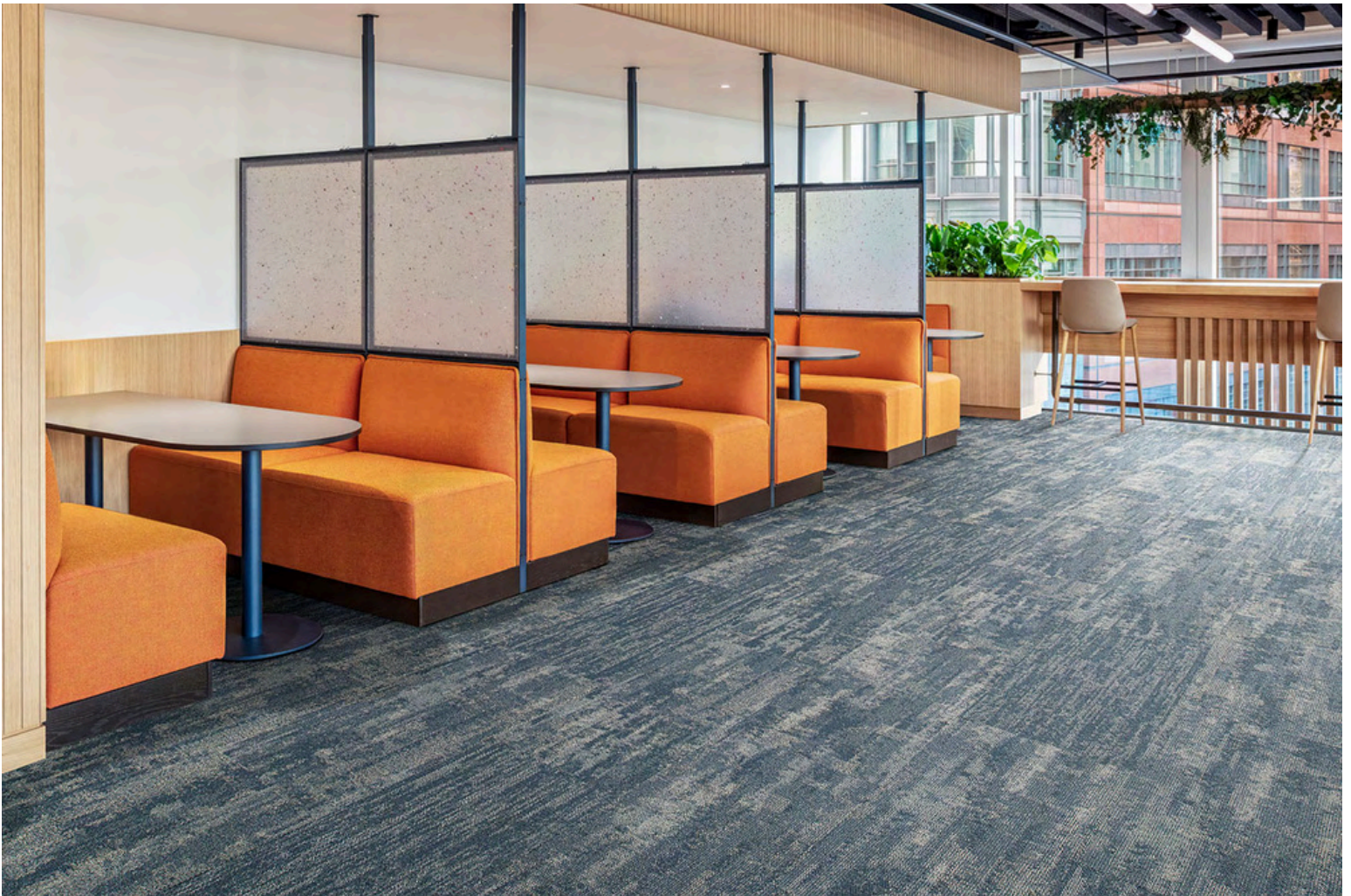
STRAIGHT-FORWARD WARRANTIES

Warranty: Installed with TileTabs	Warranty: Installed with Commercialon® Premium Adhesive (non-prorated)	Warranty: Installed with any other adhesive	Max RH, ph: Installed without Commercialon® Premium Sealer	Max RH, ph: Installed with Commercialon® Premium Sealer
Lifetime	Lifetime	1 Year	90% RH, ph 9 (Nexus Modular & LVT Adhesive) 95% RH, ph 11 (Advance Modular / RH+ Adhesive)	99% RH, ph 11 (Tile Tabs) 97% RH, ph 11 (Commercialon® Adhesive)



©2026 J+J Flooring Group, LLC - This unique design is protected under the U.S. Copyright Act of 1976. Any unauthorized copying or duplication of this design constitutes copyright infringement in violation of federal law. Due to the unique visual characteristics of modular carpets, pattern repeats and pattern run-off seams may appear more noticeable than in broadloom carpets. Such visual characteristics do not constitute a manufacturing defect, and as such, should be considered when selecting modular carpet and its installation.

These photographs are representations of the installation for this modular product. Your modular installation may look different than these photos depending upon individual tile placement, lighting, and overall space layout, including furnishings. Final tile placement and the resulting visual is thus the customer’s, and not J+J Flooring’s responsibility.



P.O. BOX 2207

DALTON, GA 30722

P 800 241 4586

F 706 275 4433

JJFLOORING.COM

AX5726M04

carpet | lvt | kinetex