

MODULAR

Cosmos Galaxy



Cosmos Galaxy



INSPIRATION

Gazing into the illuminated canopy of the night sky, with its cascade of stardust and moonlit celestial spaces, offered the stellar inspiration for Cosmos and Galaxy. Organic silhouettes are reflected with subtle colorations with nuances of warm and cool neutrals that flow across 18" x 36" tiles. Cosmos and Galaxy are the perfect light, airy coordinates to many other products within our portfolio.



[cover] COSMOS // VIRGO // monolithic // GALAXY // VIRGO // monolithic
[right] GALAXY // VIRGO // monolithic





COSMOS // PEGASUS // ashtar



GALAXY // PEGASUS // ashtar



GALAXY // PEGASUS // ashlar



COSMOS // SCORPIO // ashlar
GALAXY // SCORPIO // ashlar



COORDINATES

Beyond the beauty of individual products, our flooring coordinates effortlessly across all of our product platforms - modular carpet tile, broadloom, LVT and Kinetex textile composite flooring. This offering enables you to blend a range of designs with tonal simplicity to create palettes that reflect the demands of each unique space.

1. TEMPEST // 7481 // 3503 Hail Natural // Modular

2. GALAXY // 7719 // 3527 Scorpio // Modular

3. BOUCLÉ // 3081 + 7081 // 2706 Strand // Broadloom + Modular

4. STRIA // 7585 // 2744 Dimity // Modular

5. CUMULUS // 7480 // 3489 Strato Natural // Modular

6. COSMOS // 7720 // 3527 Scorpio // Modular

7. MAJOR METRO // 1853 // 3405 Urbane // Kinetex

8. AGAINST THE GRAIN // 1840 // 2820 Rye // Kinetex

9. MAKE YOUR MARK // V5012 + V5013 // 1063 Shadow // LVT

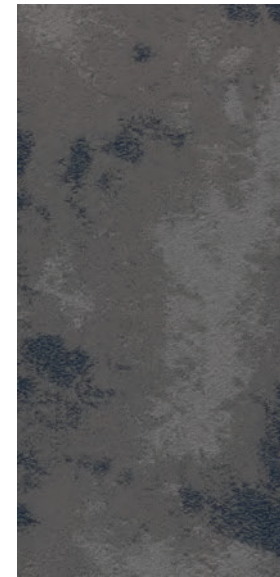
10. OBSIDIAN // 7718 // 2959 Limestone // Modular

11. JACK // 7914 // 3431 Suit // Modular

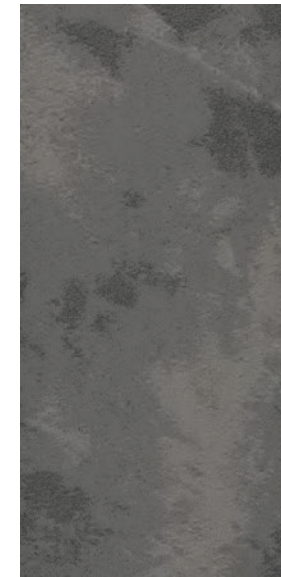


Cosmos

18"x36" MODULAR



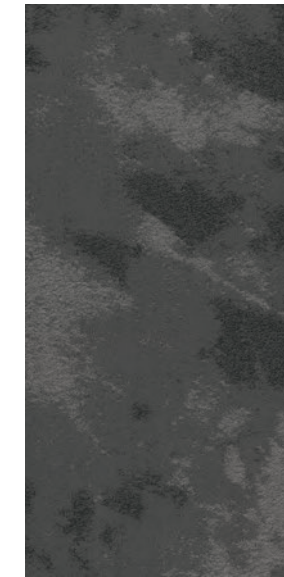
COLOR 3524
pisces



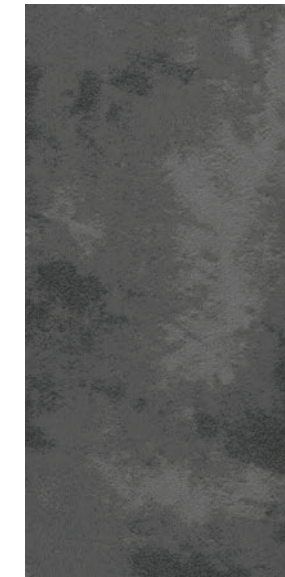
COLOR 3525
pegasus



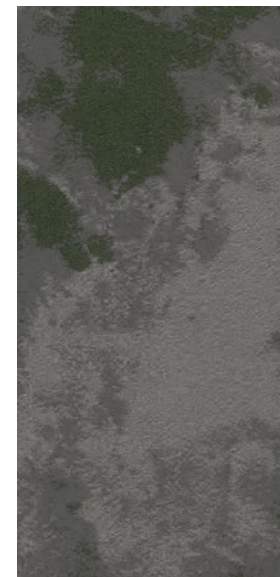
COLOR 3526
virgo



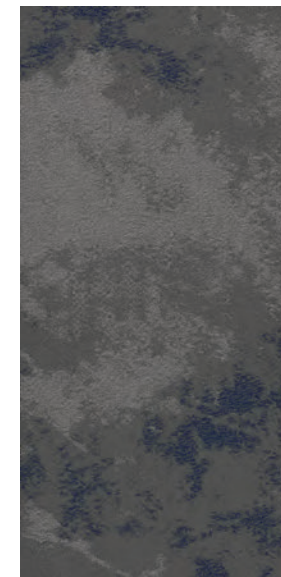
COLOR 3527
scorpio



COLOR 3528
leo



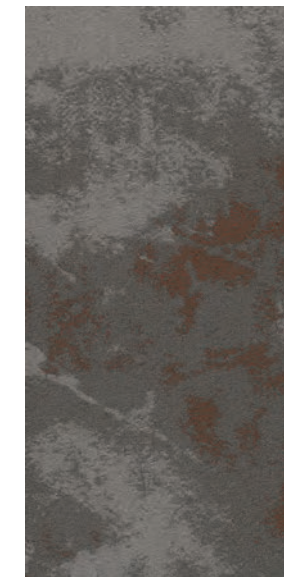
COLOR 3529
gemini



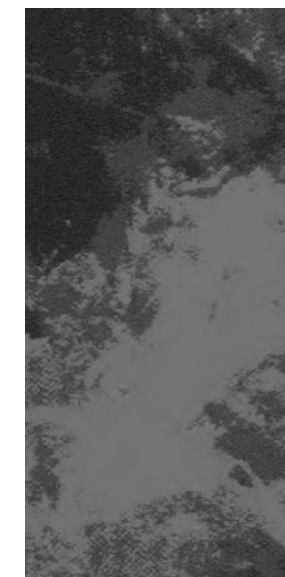
COLOR 3530
hydra



COLOR 3531
orion



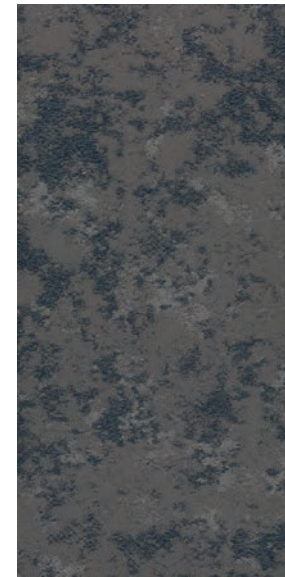
COLOR 3532
aries



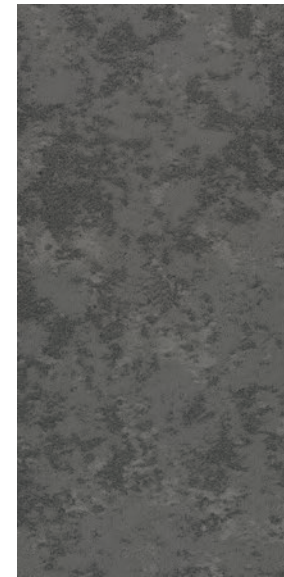
COLOR 3533
perseus



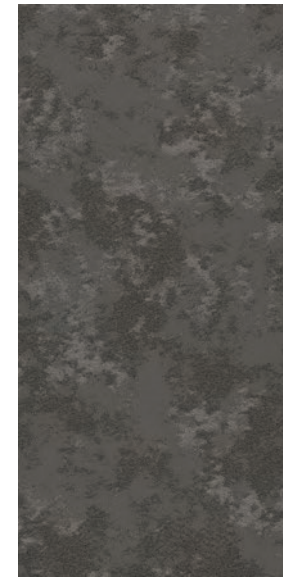
Galaxy 18"x36" MODULAR



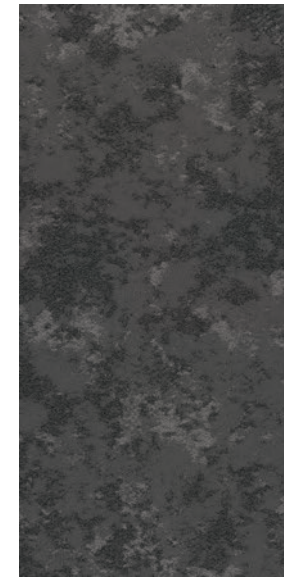
COLOR 3524
pisces



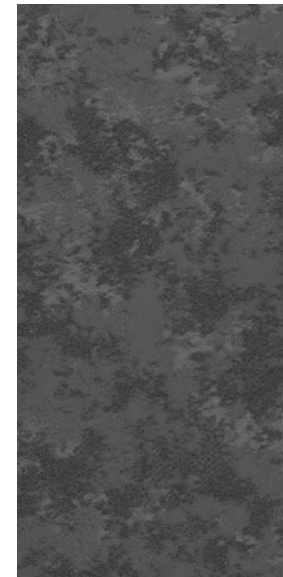
COLOR 3525
pegasus



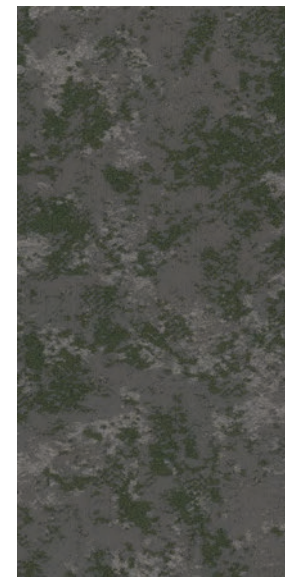
COLOR 3526
virgo



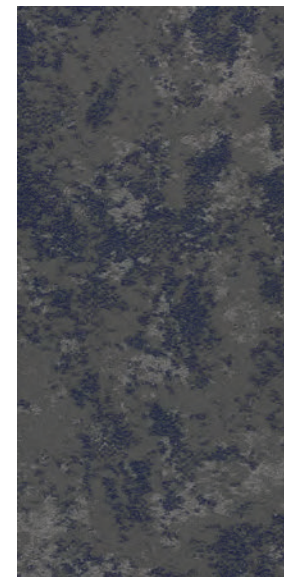
COLOR 3527
scorpio



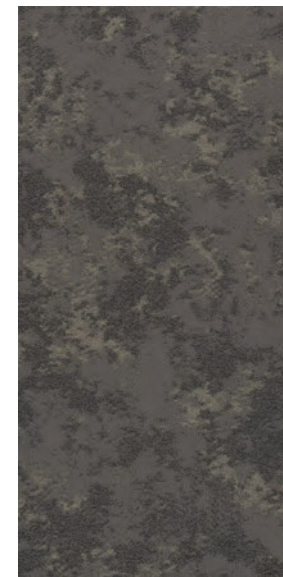
COLOR 3528
leo



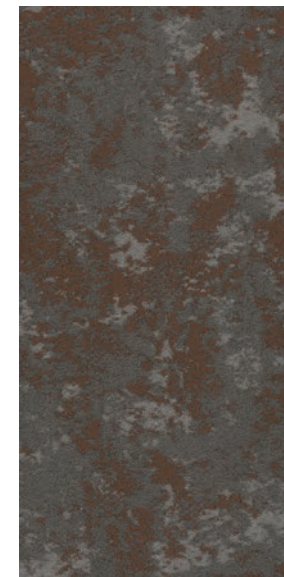
COLOR 3529
gemini



COLOR 3530
hydra



COLOR 3531
orion



COLOR 3532
aries



COLOR 3533
perseus

FIBER

Encore® SD Ultima® Nylon
(with recycled content) is specifically engineered to maximize appearance retention with exceptional color, performance, sustainability, and practicality.

BACKINGS

Nexus® Modular products can be installed in a variety of ways and are performance engineered to be visually appealing. In addition, they are designed to accommodate your long-term flooring budget.

- » Manufactured in an ISO 14001 certified facility
- » Contains pre-consumer recycled content and contributes to LEED
- » Recyclable through the J+J Flooring’s R4 Carpet Reclamation Program

ADHESIVE

Commercialon® Premium Modular Adhesive
A high strength acrylic latex-based carpet adhesive specifically formulated for bonding modular PVC backed carpet to the floor. This premium adhesive is for use with all Nexus Modular Tile products. This adhesive is guaranteed for the life of the installation when used in accordance with the J+J Flooring Carpet Installation Handbook. Commercialon Premium Modular Adhesive meets the CRI Low-VOC Emission Criteria, CRI ID# PSA-425402. Commercialon Premium Modular Adhesive is non toxic, has ultra-low odor and is antimicrobial in the dry state.

OPTIONAL:

Commercialon® High Moisture Adhesive TileTabs - High Tack Adhesive Tabs (modular only)

MOISTURE

Are high levels of moisture in your concrete slab causing issues with your project’s floor covering? We can help.

- » Nexus® Modular Carpet with TileTabs – 99% RH
- » Cost-efficient
- » Long-term performance
- » Straightforward, easy-to-understand warranty
- » Requires no special floor preparation

TECHNOLOGIES

ProTex® Anti-Soil Treatment
ProTex is a proprietary anti-soil treatment technology that is applied and bonded to the pile fiber to impede soiling and to improve cleanability. It is standard on all J+J Flooring products.

OPTIONAL:

ProSept® Antimicrobial

STYLE

cosmos 7720 modular

galaxy 7719 modular

CONSTRUCTION

patterned loop

patterned loop

FIBER TYPE

100% Encore® SD Ultima® nylon

100% Encore® SD Ultima® nylon

DYE METHOD

solution dyed

solution dyed

OUNCE WEIGHT

24.0 oz./sy (814 grams/m²)

23.0 oz./sy (780 grams/m²)

GAUGE

1/10 (3.94 rows/cm)

1/10 (3.94 rows/cm)

BACKING

Nexus® Modular

Nexus® Modular

SIZE

18” x 36” (45.72 cm X 91.44 cm)

18” x 36” (45.72 cm X 91.44 cm)

PATTERN REPEAT

n/a

n/a

TOTAL THICKNESS (nominal average)

0.250 inches (0.66 cm)

0.250 inches (0.66 cm)

SPECIAL TECHNOLOGY

ProTex® anti-soil treatment

ProTex® anti-soil treatment

OPTIONAL SPECIAL TECHNOLOGIES

ProSept® antimicrobial
Sentir® advanced odor blocking treatment

ProSept® antimicrobial
Sentir® advanced odor blocking treatment

PHYSICAL TESTING

flooring radiant panel (class 1)
pill test – (passes)
smoke density (less than 450 flaming)
static generation -(less than 3.5 kv)
ADA compliance (compliant for accessible routes)

flooring radiant panel (class 1)
pill test – (passes)
smoke density (less than 450 flaming)
static generation -(less than 3.5 kv)
ADA compliance (compliant for accessible routes)

FIBER WARRANTY

lifetime fiber performance for wear
lifetime fiber performance for static
lifetime stain removal
lifetime colorfastness to light and atmospheric contaminants

lifetime fiber performance for wear
lifetime fiber performance for static
lifetime stain removal
lifetime colorfastness to light and atmospheric contaminants

BACKING WARRANTY

lifetime for tuft bind strength (edge ravel, yarn pulls, zippering)
lifetime against delamination
lifetime dimensional stability

lifetime for tuft bind strength (edge ravel, yarn pulls, zippering)
lifetime against delamination
lifetime dimensional stability

MODULAR INSTALLATION METHODS



STRAIGHT-FORWARD WARRANTIES					
Warranty: Installed with TileTabs	Warranty: Installed with Commercialon® Premium Adhesive and Commercialon® High Moisture Adhesive (non-prorated)	Warranty: Installed with any other adhesive	Max RH, pH: Installed without Commercialon® Premium Sealer	Max RH, pH: Installed with Commercialon® Premium Sealer	Max RH, pH: Installed with Commercialon® High Moisture Adhesive
Lifetime	Lifetime	1 Year	90% RH, pH 9	99% RH, pH 11 (TileTabs) 97% RH, pH 11 (Commercialon® Adhesive)	99% RH, pH12



©2023 J+J Flooring Group, LLC - This unique design is protected under the U.S. Copyright Act of 1976. Any unauthorized copying or duplication of this design constitutes copyright infringement in violation of federal law. Due to the unique visual characteristics of modular carpets, pattern repeats and pattern run-off seams may appear more noticeable than in broadloom carpets. Such visual characteristics do not constitute a manufacturing defect, and as such, should be considered when selecting modular carpet and its installation.

These photographs are representations of the installation for this modular product. Your modular installation may look different than these photos depending upon individual tile placement, lighting, and overall space layout, including furnishings. Final tile placement and the resulting visual is thus the customer’s, and not J+J Flooring’s responsibility.



P.O. BOX 2207

DALTON, GA 30722

P 800 241 4586

F 706 275 4433

JJFLOORING.COM

MX0623M03

carpet | lvt | kinetex