

Digital

kinetex

24"x24" MODULAR



FLOORING

# Digital



## INSPIRATION

Infusing technology with the creative design process, Kinetex offers Digital - an algorithm of fractal patterning- an artwork of filtered pixelation. Colorful infusions of organic geometrics bring a balance of form and function across 24"x24" tiles. Kinetex's High-Def Color Technology™ offers a vibrant pattern and dimensional design in a crisp color palette of 13 contemporary colorways designed to energize and uplift any workspace.

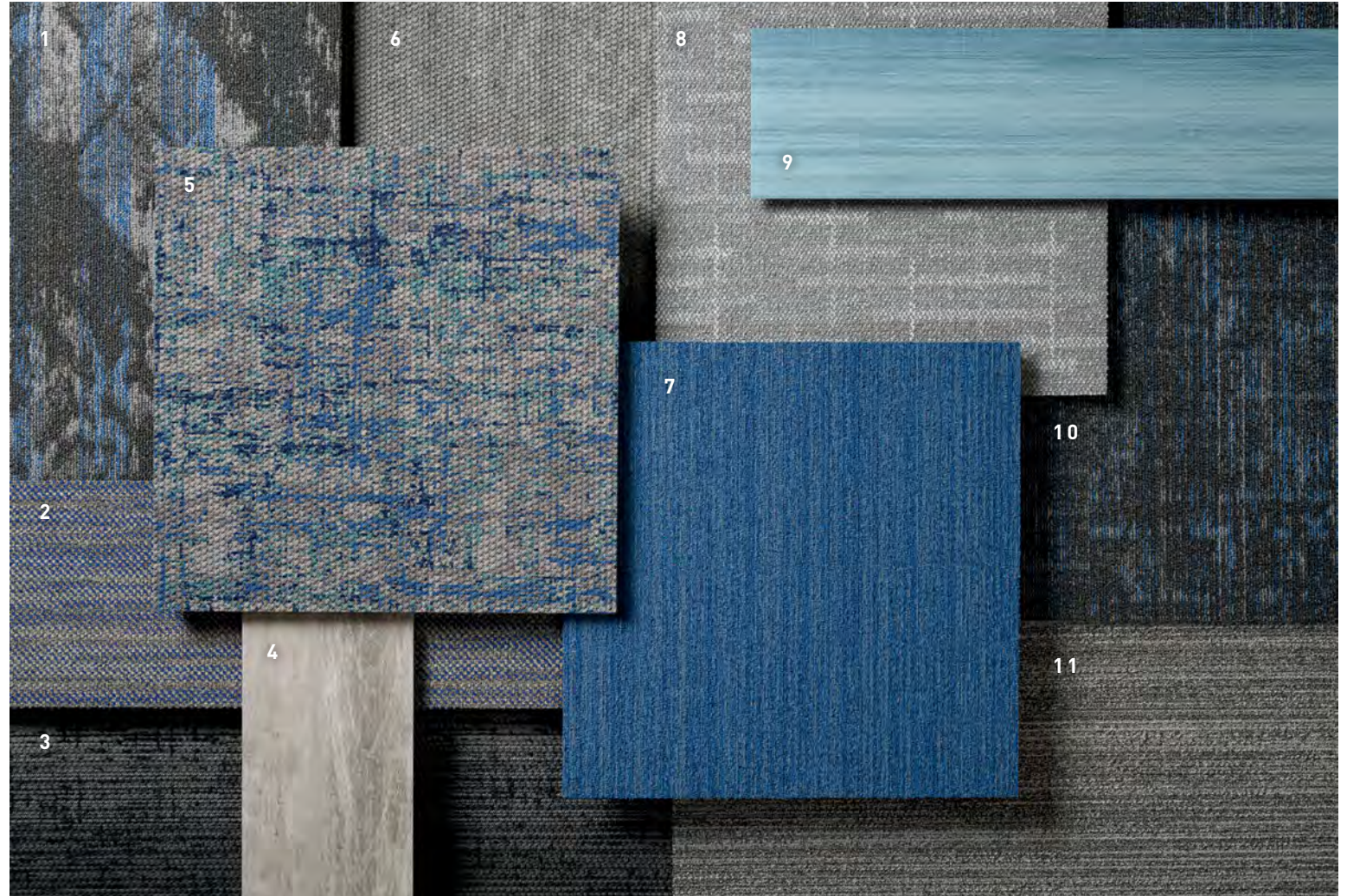


[cover] DIGITAL // MAINFRAME // ashlar  
[right] DIGITAL // ORBIT // ashlar









**COORDINATES**

Beyond the beauty of individual products, our flooring coordinates effortlessly across all of our product platforms - modular carpet tile, broadloom, LVT and Kinetex textile composite flooring. This offering enables you to blend a range of designs with tonal simplicity to create palettes that reflect the demands of each unique space.

- |  |   |
|--|---|
| 1. <b>ADVANCE</b> // 7600 // 3275 Royal Path // Modular        | 7. <b>COLOR ZONE</b> // 7479 // 3370 Cobalt // Modular            |
| 2. <b>TWEED</b> // 7083 // 2987 Selvage // Modular             | 8. <b>MADRAS</b> // 7065 // 2400 Flocked // Modular               |
| 3. <b>SOUNDTRACK</b> // 1847 // 3019 Music // Kinetex          | 9. <b>MAKE YOUR MARK</b> // V5012 + V5013 // 1066 Sapphire // LVT |
| 4. <b>POWER PLAY</b> // V5019 + V5020 // 1086 Influence // LVT | 10. <b>ADAPT</b> // 7602 // 3275 Royal Path // Modular            |
| 5. <b>DIGITAL</b> // 1859 // 3573 Zone // Kinetex              | 11. <b>ZEPHYR</b> // 7478 // 3366 Planetary // Modular            |
| 6. <b>STRATA</b> // 1826 // 1854 Silt // Kinetex               |   |



**COORDINATES**

Beyond the beauty of individual products, our flooring coordinates effortlessly across all of our product platforms - modular carpet tile, broadloom, LVT and Kinetex textile composite flooring. This offering enables you to blend a range of designs with tonal simplicity to create palettes that reflect the demands of each unique space.

1. PROPEL II // 1817 // 1707 Advance // Kinetex

2. ADVANCE // 7600 // 3273 Light Beam // Modular

3. DIGITAL // 1859 // 3577 Tour // Kinetex

4. ALLOY // V5008 // 1050 Union // LVT

5. METAMORPHIC // 7717 // 2960 Feldspar // Modular

6. ADAPT // 7602 // 3270 Warm Beam // Modular

7. TIMELESS // V5011 // 1009 Heritage // LVT

8. TWILL WEAVE // 7586 // 2874 Mills // Modular

9. LEGEND // V5009 + V5010 // 1059 Fiction // LVT

10. UMBRA II // 1819 // 1764 Shadow // Kinetex

11. TRANQUIL // 6593 + 7593 // 3236 Sandstone // Modular + Broadloom



DIGITAL // TOUR // brick  
 LEGEND // FICTION // 1/2 drop  
 [back cover] DIGITAL // JOURNEY // brick

# Digital 24"x24" MODULAR



COLOR 3579  
orbit



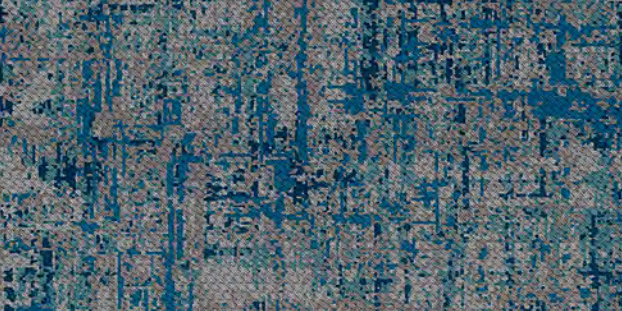
COLOR 3577  
tour



COLOR 3580  
range



COLOR 3575  
turning



COLOR 3573  
zone



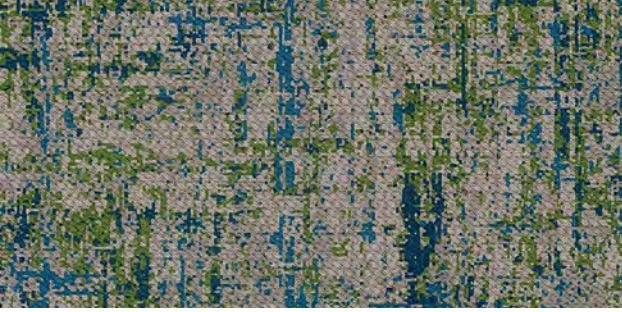
COLOR 3578  
field



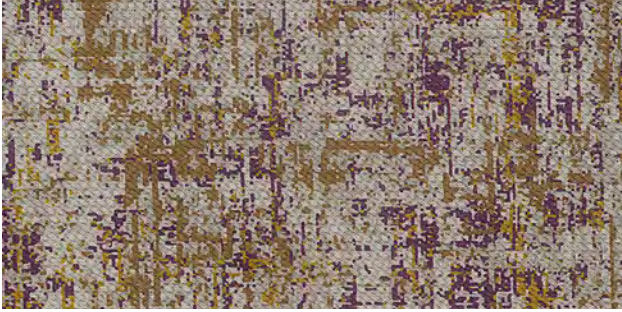
COLOR 3581  
chain



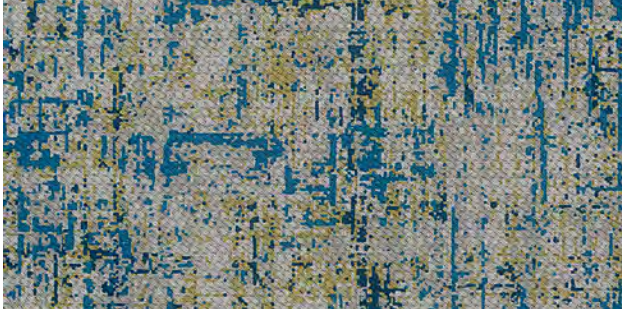
COLOR 3585  
boundary



COLOR 3574  
bounds



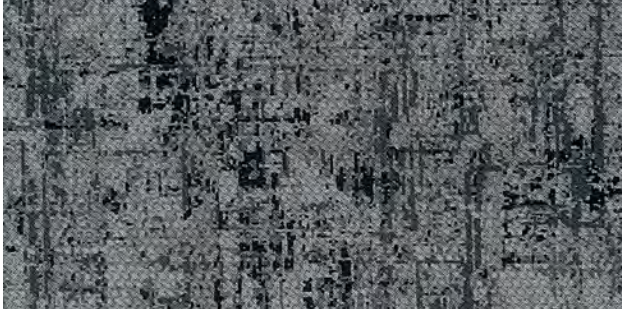
COLOR 3576  
journey



COLOR 3582  
compass



COLOR 3584  
region

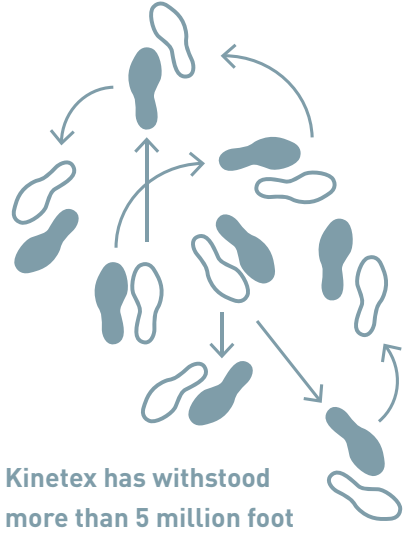


COLOR 3571  
mainframe



1. DURABILITY

Kinetex delivers enduring performance, year after year. One of the most thoroughly tested flooring products on the market, it has outstanding dimensional stability and unparalleled crush resistance.

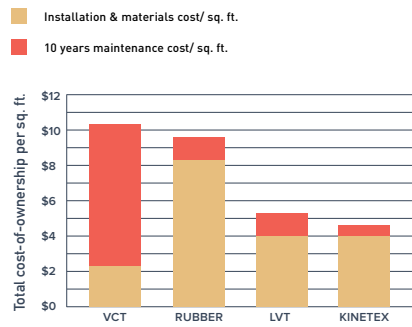


Kinetex has withstood more than 5 million foot traffic events.

2. MAINTENANCE

Tough to wear out, easy to maintain. With vacuuming and encapsulation cleaning, Kinetex looks like new, year after year. Thanks to a lightweight face construction, Kinetex retains less water than carpet and dries faster. It is easily sanitized and resists the most challenging staining agents.

Life Cycle Costs: INSTALLATION AND MAINTENANCE



3. MOISTURE TOLERANCE

The most common subfloor, concrete, can release excessive moisture and destroy floor covering systems—unless costly precautions are taken before installation. But moisture mitigation isn't necessary with Kinetex; its breathable nature allows moisture to pass through its backing, instead of trapping it underneath. Kinetex textile composite flooring will perform in elevated RH slabs up to 100%.

100% RH TOLERANCE

NO VAPOR BARRIER REQUIRED—regardless if the slab is new or old, regardless of hydrostatic pressure

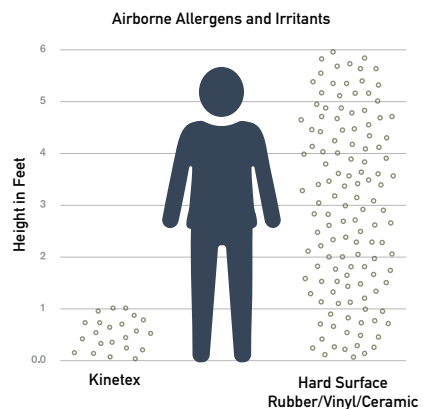
BREATHABLE No trapped moisture. 3rd party tested and verified.

Thousands of installations worldwide since 2012. NO MOISTURE-RELATED CLAIMS.

4. HEALTH

Kinetex minimizes air particulates that trigger allergies and cause infection. It easily surpasses California's 01350 requirements—the most popular U.S. standard for evaluating and restricting VOC emissions indoors.

Easy Breathing

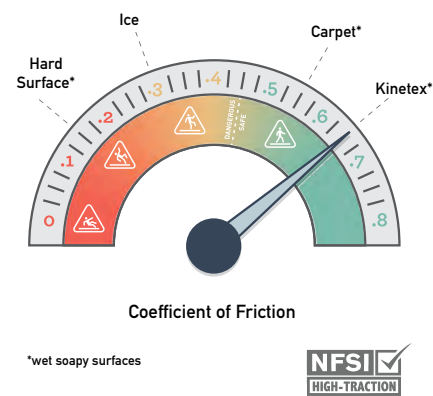


Foot Traffic Dust Emissions Test (ESO Fine Test Dust 12103-142)

5. SAFETY

Kinetex is the only wall-to-wall textile floor covering certified as High-Traction by the National Floor Safety Institute. Its innovative construction creates one of the most slip-resistant flooring surfaces ever tested—wet or dry—to prevent falls before they happen.

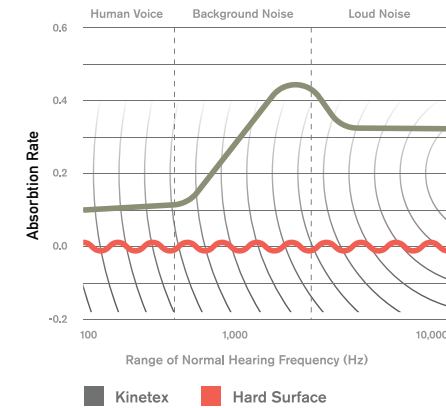
Gaining Traction



6. ACOUSTICS

Kinetex delivers unparalleled acoustic performance, with one of the highest Noise Reduction Coefficients (NRC) and Impact Insulation Classifications (IIC) ratings of any commercial flooring product.

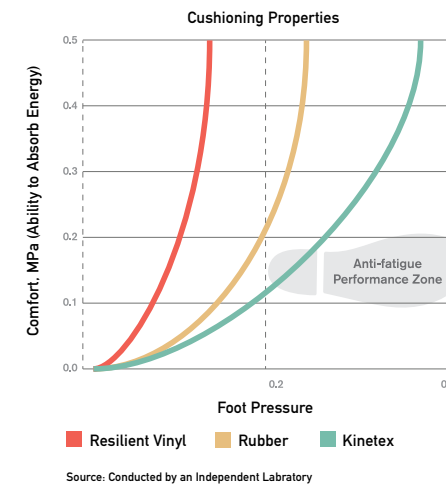
Keeping Quiet



7. COMFORT

Kinetex, a soft textile surface with a high-density backing, has exceptional anti-fatigue properties and minimal rolling resistance. Because it can absorb energy, Kinetex has the potential to reduce repetitive foot stress injuries and other injuries related to standing and frequent movement from place to place.

Step-by-Step Support

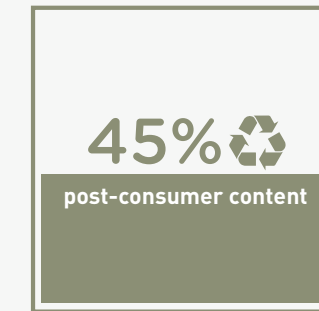


Source: Conducted by an Independent Laboratory

8. SUSTAINABILITY

Made with 45% post-consumer recycled content, each Kinetex tile contains the equivalent of 27 used water bottles. This dematerialized flooring product and its longer life mean that Kinetex has a much smaller environmental footprint than other commercial flooring options. Kinetex is NSF/ANSI-140 Platinum certified (the industry-leading standard for sustainability) and has a Red List Free DECLARE label. Furthermore, Kinetex has been verified as a Carbon Neutral product.

Second Chances



Each Kinetex tile contains the equivalent of 27 plastic water bottles.

KINETEX INSTALLATION

Although Kinetex is a modular tile, it does not install like traditional modular carpet. Installers should carefully read the full Kinetex installation instructions. Special attention should be applied until installers gain experience with module placement. Installers should perform site and material conditioning and surface preparation, and there should be no condensation or standing water at the time of installation. Kinetex material is lightweight and is easy to cut, which reduces installation time. Kinetex uses J+J Flooring's proven adhesive system with a lifetime performance warranty.

Kinetex Adhesive

Kinetex Adhesive is formulated for Kinetex textile composite flooring products and is built to bond the textile composite to the properly prepared substrates for the life of the installation. Products with Kinetex Adhesive will perform in elevated RH slabs up to 100%.

Please see the Kinetex installation instructions for full installation details.

TECHNOLOGIES

**High-Def Color Technology**

J+J Flooring achieves next-generation innovation with the development of High-Def Color Technology. This latest engineering capability provides Kinetex products with crisp color, vibrant patterns and dimensional design that rivals that of soft surface flooring.



WARRANTIES

We stand behind every aspect of Kinetex and extend certain lifetime warranties. Each warranty is covered for the useful life of the product, provided that installation and maintenance is in accordance with J+J Flooring’s Kinetex Installation instructions.

**Wear Layer Warranties**

Product Performance	Colorfastness to Light & Crocking	Stain Removal	Static Protection
<b>Lifetime</b>	<b>Lifetime</b>	<b>Lifetime</b>	<b>Lifetime</b>

**Backing Warranties**

Protection from Edge Ravel	Protection from Delamination Failure	Dimensional Stability
<b>Lifetime</b>	<b>Lifetime</b>	<b>Lifetime</b>



©2023 J+J Flooring Group, LLC - This unique design is protected under the U.S. Copyright Act of 1976. Any unauthorized copying or duplication of this design constitutes copyright infringement in violation of federal law. Due to the unique visual characteristics of modular carpets, pattern repeats and pattern run-off seams may appear more noticeable than in broadloom carpets. Such visual characteristics do not constitute a manufacturing defect, and as such, should be considered when selecting modular carpet and its installation.

These photographs are representations of the installation for this modular product. Your modular installation may look different than these photos depending upon individual tile placement, lighting, and overall space layout, including furnishings. Final tile placement and the resulting visual is thus the customer’s, and not J+J Flooring’s responsibility.

\*NRC rating is a measure of the effectiveness of a material in absorbing sound. The higher the NRC rating, the greater the ability of the flooring product to absorb airborne noise. Independent laboratory testing of Kinetex has shown an average NRC rating of 0.30 (bare concrete flooring will typically provide a NRC Rating of 0.015).

\*\*IIC is a rating of the insulation from impact noise. The higher the IIC rating, the greater the sound insulation. Independent laboratory testing of Kinetex has shown an average IIC Rating of .64 (bare concrete flooring will typically provide an IIC Rating of 34) NOTE: Test results and testing laboratory will vary, and the above information is not guaranteed.

STYLE

Digital 1859 modular

WEAR LAYER

solution dyed polyester - applied pattern (produced with High-Def Color Technology™)

BACKING

polyester felt cushion

TOTAL WEIGHT (nominal average)

4.5 oz - 5.2 oz/square foot

TOTAL THICKNESS (nominal average)

0.205 inches

DIMENSIONS

24 x 24 inch modules

PACKAGING

18 modules per box – 72 square feet

ENVIRONMENTAL ATTRIBUTES

CARBON FOOTPRINT

carbon neutral

RED LIST FREE

DECLARE label

RECYCLED CONTENT

45% (post consumer)

LEED SCORECARD

IEQ 4.1 and IEQ 4.3

NSF/ANSI 140 CERTIFICATION

platinum

TESTING

FLOORING RADIANT PANEL

class 1

SMOKE DENSITY

less than 450 (flaming & non-flaming)

ELECTROSTATIC PROPENSITY

less than 3.0 kv

COLORFASTNESS TO LIGHT

rating of 4.0 or greater

COLORFASTNESS TO CROCKING

rating of 4.0 or greater

WATER REPELLENCY

rating of 4.0 or greater

APPEARANCE RETENTION

4.0 or greater

SLIP RESISTANCE

Complies with ADA Guidelines for level surface  
NFSI Certified High-Traction

THERMAL INSULATION

0.73

NOISE REDUCTION COEFFICIENT

NRC Rating: 0.30\*

IMPACT INSULATION CLASSIFICATION

IIC Rating: 64\*\*

STAIN RESISTANCE

resists most challenging stains

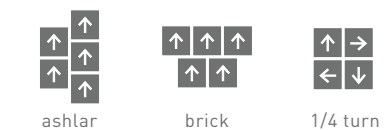
INDOOR AIR QUALITY CERTIFICATION

CRI Green Label Plus™

ADHESIVE

Kinetex adhesive (full-spread pressure-sensitive)

INSTALLATION METHODS



kinetex

24" x 24" MODULAR



P.O. BOX 2207

DALTON, GA 30722

P 800 241 4586

F 706 275 4433

JJFLOORING.COM

JX3223M06

carpet | lvt | kinetex



FLOORING  
A DIVISION OF ENGINEERED FLOORS