

kinetex

24"x24" MODULAR

Downtown

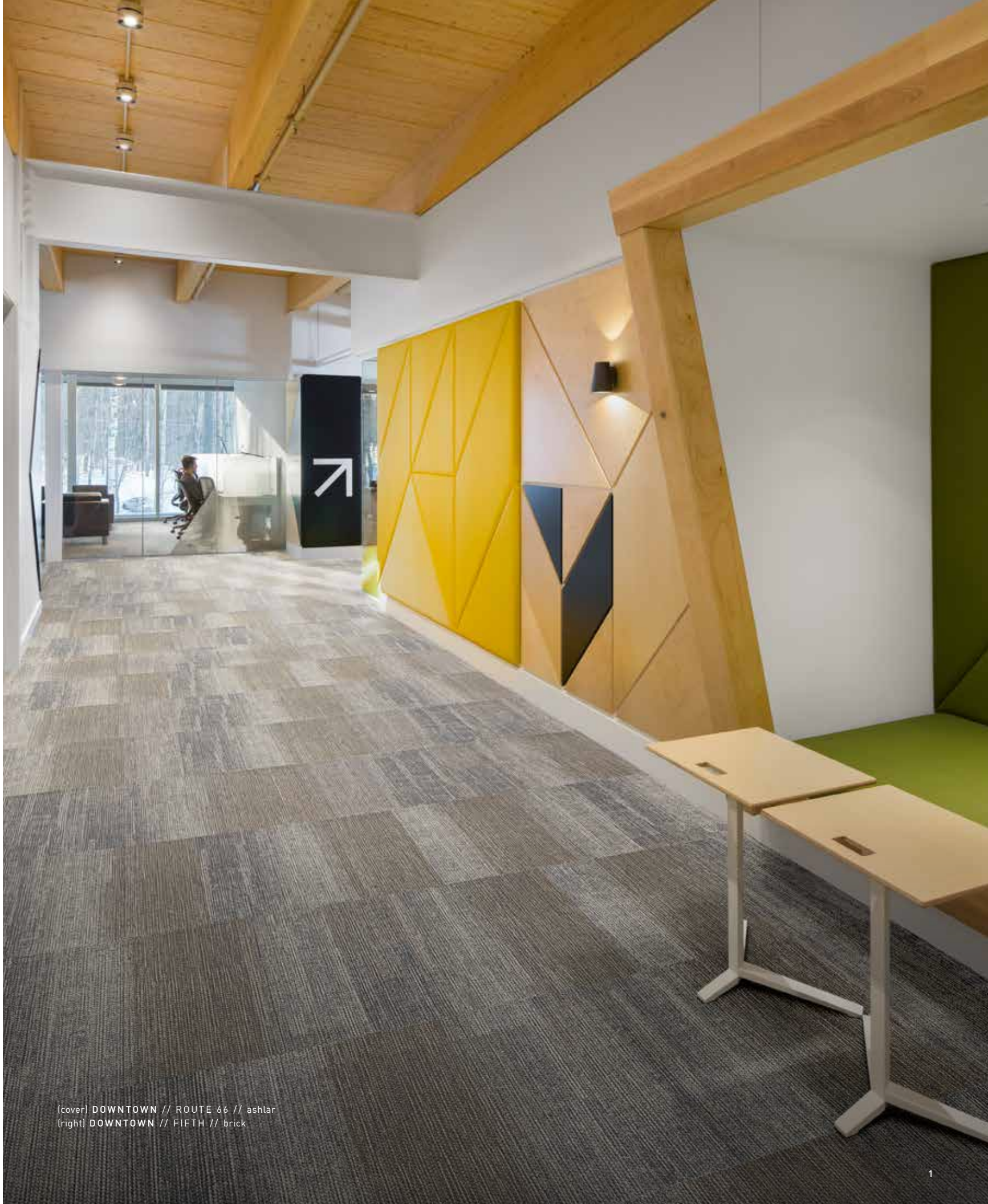


FLOORING

Downtown



INSPIRATION
The essence of Downtown is articulated through a layered linear texture and subtle pattern striations that mimic the silhouette of architecture in the heart of a city. The blended linear motif paired with eye-catching color movement create a seamless installation across the room.



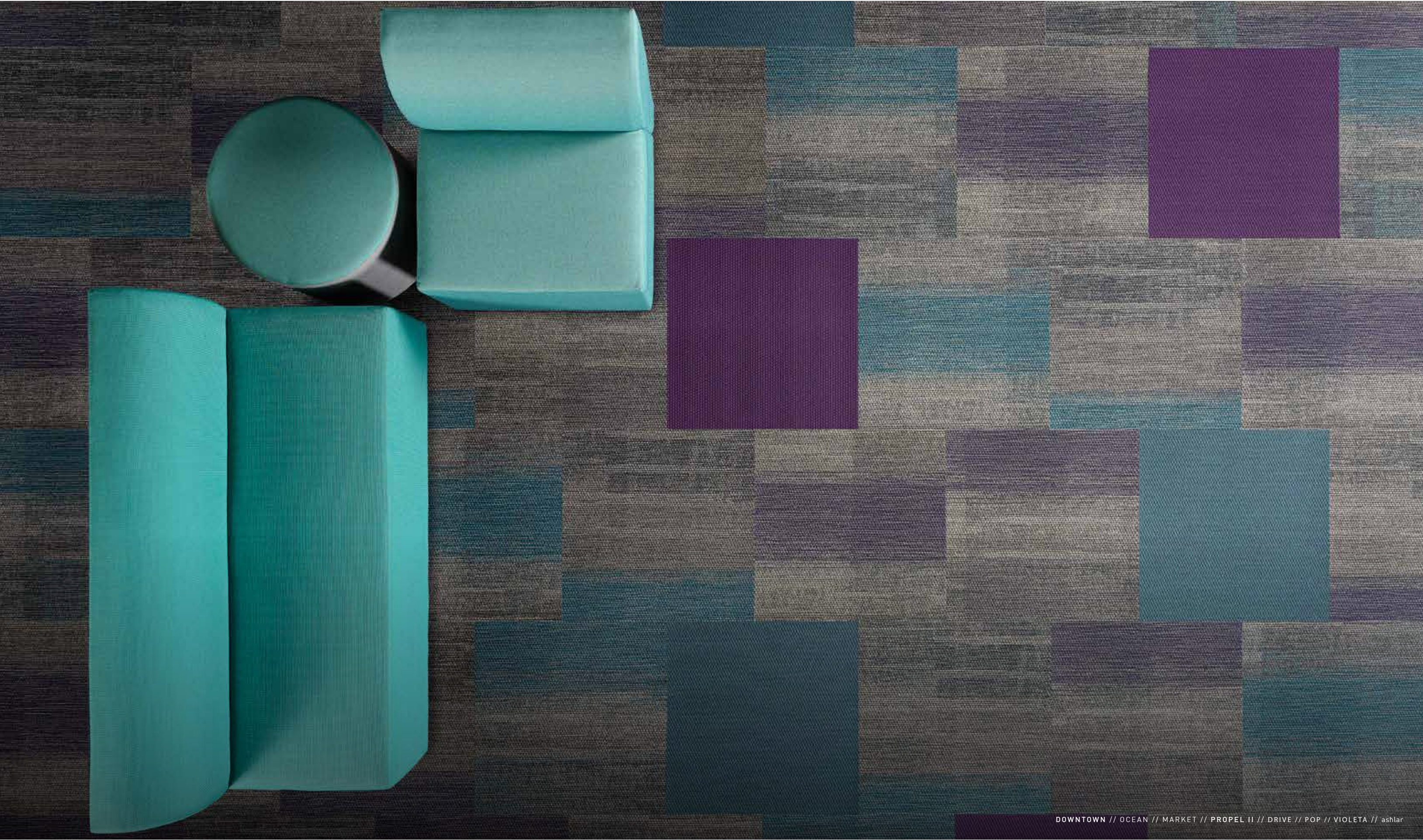
(cover) DOWNTOWN // ROUTE 66 // ashlar
(right) DOWNTOWN // FIFTH // brick



DOWNTOWN // ROUTE 66 // ashlar



DOWNTOWN // SUNSET // ashlar



DOWNTOWN // OCEAN // MARKET // PROPEL II // DRIVE // POP // VIOLETA // ashlar





DOWNTOWN // BOURBON // quarter turn
[back cover] DOWNTOWN // PACIFIC COAST // ashlar



COORDINATES

Beyond the beauty of individual products, our flooring coordinates effortlessly across all of our product platforms - modular carpet tile, broadloom, LVT and Kinetex textile composite flooring. This offering enables you to blend a range of designs with tonal simplicity to create palettes that reflect the demands of each unique space.

- 1. **ANALOG MONO** // 1822 // #1554 Associate // Kinetex
- 2. **NETWORK** // 1842 // #2854 Modem // Kinetex
- 3. **DOWNTOWN** // 1850 // #3153 Route 66 // Kinetex
- 4. **PASSAGES** // 3036 // #1013 Avenue // Broadloom & Modular
- 5. **DOWNTOWN** // 1850 // #3153 Route 66 // Kinetex
- 6. **POWER PLAY** // V5020 // #1080 Knowledge // LVT
- 7. **STRATA** // 1826 // #1851 Geologic // Kinetex
- 8. **NETWORK** // 1842 // #2854 Modem // Kinetex
- 9. **ANALOG MONO** // 1822 // #1554 Associate // Kinetex

- 1. **TIMBER** // 1825 // #1924 Catalpa // Kinetex
- 2. **DOWNTOWN** // 1850 // #3151 Wall // Kinetex
- 3. **NETWORK** // 1842 // #2908 Wiring // Kinetex
- 4. **LEGEND** // V5009 // #1058 Fable // LVT
- 5. **DOWNTOWN** // 1850 // #3161 Ocean // Kinetex
- 6. **INDEX** // 7008 // #1833 Album // Modular
- 7. **DOWNTOWN** // 1850 // #3161 Ocean // Kinetex

Downtown

24"x24" MODULAR



COLOR 3159
rodeo



COLOR 3153
route 66, a neutral that shares the
same base with colors indicated with *



COLOR 3150
broadway



COLOR 3154
lombard



COLOR 3151
wall



COLOR 3155
fifth*



COLOR 3152
pacific coast



COLOR 3156
bourbon



COLOR 3162
hollywood*



COLOR 3161
ocean*



COLOR 2060
peachtree*



COLOR 3157
market*



COLOR 3158
sunset*



COLOR 3163
blue ridge*



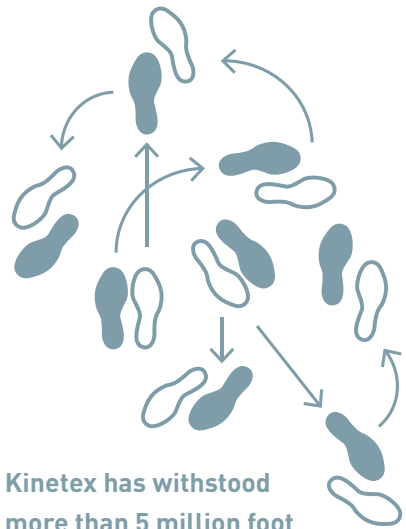
COLOR 3159
pennsylvania*



COLOR 3164
river*

1. DURABILITY

Kinetex delivers enduring performance, year after year. One of the most thoroughly tested flooring products on the market, it has outstanding dimensional stability and unparalleled crush resistance.

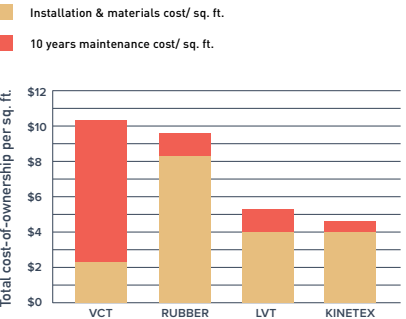


Kinetex has withstood more than 5 million foot traffic events.

2. MAINTENANCE

Tough to wear out, easy to maintain. With vacuuming and encapsulation cleaning, Kinetex looks like new, year after year. Thanks to a lightweight face construction, Kinetex retains less water than carpet and dries faster. It is easily sanitized and resists the most challenging staining agents.

Life Cycle Costs:
INSTALLATION AND MAINTENANCE



3. MOISTURE TOLERANCE

The most common subfloor, concrete, can release excessive moisture and destroy floor covering systems—unless costly precautions are taken before installation. But moisture mitigation isn’t necessary with Kinetex; its breathable nature allows moisture to pass through its backing, instead of trapping it underneath. Kinetex textile composite flooring will perform in elevated RH slabs up to 100%.

100%
RH TOLERANCE

BREATHABLE
No trapped moisture.
3rd party tested
and verified.

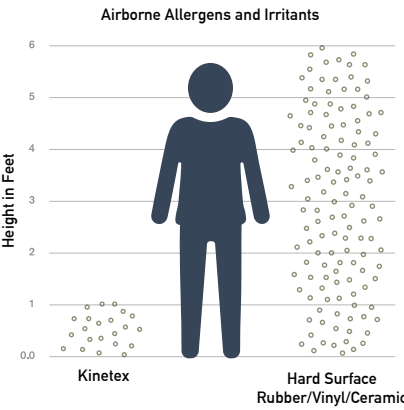
**NO VAPOR BARRIER
REQUIRED-**
regardless if the slab is new
or old, regardless of
hydrostatic pressure

**Thousands of installations
worldwide since 2012.**
NO MOISTURE-RELATED
CLAIMS.

4. HEALTH

Kinetex minimizes air particulates that trigger allergies and cause infection. It easily surpasses California’s 01350 requirements— the most popular U.S. standard for evaluating and restricting VOC emissions indoors.

Easy Breathing

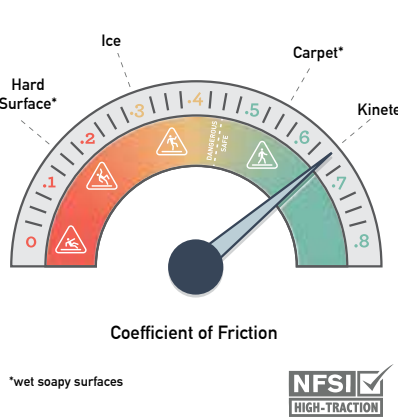


Foot Traffic Dust Emissions Test
(ESO Fine Test Dust 12103–142)

5. SAFETY

Kinetex is the only wall-to-wall textile floor covering certified as High-Traction by the National Floor Safety Institute. Its innovative construction creates one of the most slip-resistant flooring surfaces ever tested—wet or dry—to prevent falls before they happen.

Gaining Traction



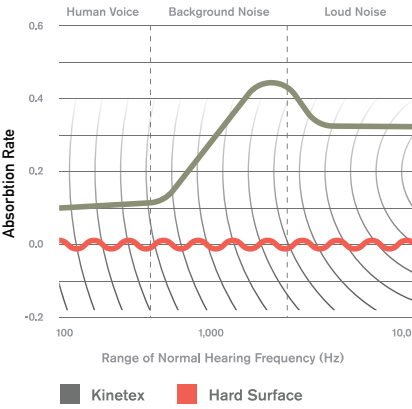
*wet soapy surfaces



6. ACOUSTICS

Kinetex delivers unparalleled acoustic performance, with one of the highest Noise Reduction Coefficients (NRC) and Impact Insulation Classifications (IIC) ratings of any commercial flooring product.

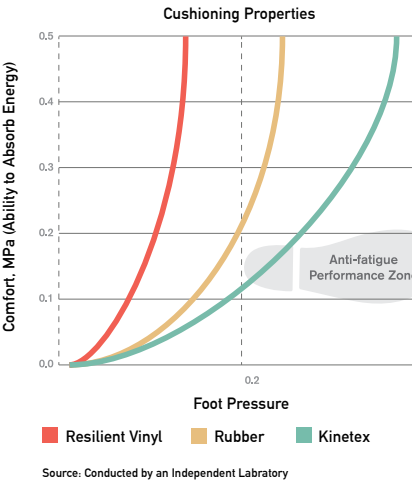
Keeping Quiet



7. COMFORT

Kinetex, a soft textile surface with a high-density backing, has exceptional anti-fatigue properties and minimal rolling resistance. Because it can absorb energy, Kinetex has the potential to reduce repetitive foot stress injuries and other injuries related to standing and frequent movement from place to place.

Step-by-Step Support



Source: Conducted by an Independent Laboratory

8. SUSTAINABILITY

Made with 45% post-consumer recycled content, each Kinetex tile contains the equivalent of 27 used water bottles. This dematerialized flooring product and its longer life mean that Kinetex has a much smaller environmental footprint than other commercial flooring options. Furthermore, Kinetex is NSF/ANSI-140 Platinum certified (the industry-leading standard for sustainability) and has a Red List Free DECLARE label.

Second Chances



Each Kinetex tile contains the equivalent of 27 plastic water bottles.

KINETEX INSTALLATION

Installing Kinetex is as easy as traditional modular carpet, however special attention should be applied until installers gain experience with module placement. Installers should perform site and material conditioning, surface preparation, and concrete pH and moisture testing as if they were installing J+J Flooring carpet modules. Because it is such a lightweight material the modules cut very easily, reducing installation time. Kinetex uses J+J Flooring’s proven adhesive systems with lifetime performance warranties.

Kinetex Adhesive

Kinetex Adhesive is formulated for Kinetex textile composite flooring products and is built to bond the textile composite to the properly prepared substrates for the life of the installation. Products with Kinetex Adhesive will perform in elevated RH slabs up to 100%.

PreFix® (optional)

PreFix includes a release liner that easily peels away to reveal pre-applied adhesive that securely anchors the Kinetex module in place. Products with PreFix will perform in elevated RH slabs up to 100%, allowing the flooring to be installed without costly moisture mitigation. PreFix offers a quick installation system and it can be added to all Kinetex products as an optional adhesive.

Please see the Kinetex installation instructions for full installation details.

TECHNOLOGIES

High-Def Color Technology
J+J Flooring achieves next-generation innovation with the development of High-Def Color Technology. This latest engineering capability provides Kinetex products with crisp color, vibrant patterns and dimensional design that rivals that of soft surface flooring.



WARRANTIES

We stand behind every aspect of Kinetex and extend certain lifetime warranties. Each warranty is covered for the useful life of the product, provided that installation and maintenance is in accordance with J+J Flooring’s Kinetex Installation instructions.

Wear Layer Warranties

Product Performance	Colorfastness to Light & Crocking	Stain Removal	Static Protection
Lifetime	Lifetime	Lifetime	Lifetime

Backing Warranties

Protection from Edge Ravel	Protection from Delamination Failure	Dimensional Stability
Lifetime	Lifetime	Lifetime



©2020 J+J Flooring Group, LLC - This unique design is protected under the U.S. Copyright Act of 1976. Any unauthorized copying or duplication of this design constitutes copyright infringement in violation of federal law. Due to the unique visual characteristics of modular carpets, pattern repeats and pattern run-off seams may appear more noticeable than in broadloom carpets. Such visual characteristics do not constitute a manufacturing defect, and as such, should be considered when selecting modular carpet and its installation.

These photographs are representations of the installation for this modular product. Your modular installation may look different than these photos depending upon individual tile placement, lighting, and overall space layout, including furnishings. Final tile placement and the resulting visual is thus the customer’s, and not J+J Flooring’s responsibility.

*NRC rating is a measure of the effectiveness of a material in absorbing sound. The higher the NRC rating, the greater the ability of the flooring product to absorb airborne noise. Independent laboratory testing of Kinetex has shown an average NRC rating of 0.30 (bare concrete flooring will typically provide a NRC Rating of 0.015).

**IIC is a rating of the insulation from impact noise. The higher the IIC rating, the greater the sound insulation. Independent laboratory testing of Kinetex has shown an average IIC Rating of .64 (bare concrete flooring will typically provide an IIC Rating of 34) NOTE: Test results and testing laboratory will vary, and the above information is not guaranteed.

STYLE

downtown 1850 modular

PHYSICAL CHARACTERISTICS

WEAR LAYER	polyester-applied pattern (produced with High-Def Color Technology)
BACKING	polyester felt cushion
TOTAL WEIGHT (nominal average)	4.5 oz - 5.2 oz/square foot
TOTAL THICKNESS (nominal average)	0.205 inches
DIMENSIONS	24 x 24 inch modules
PACKAGING	18 modules per box – 72 square feet

ENVIRONMENTAL ATTRIBUTES

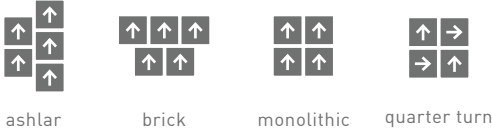
RECYCLED CONTENT	45% post-consumer
LEED SCORECARD	IEQ 4.1 and IEQ 4.3
NSF/ANSI 140 CERTIFICATION	platinum

TESTING

FLOORING RADIANT PANEL	class 1
SMOKE DENSITY	less than 450 (flaming & non-flaming)
ELECTROSTATIC PROPENSITY	less than 3.0 kv
COLORFASTNESS TO LIGHT	rating of 4.0 or greater
COLORFASTNESS TO CROCKING	rating of 4.0 or greater
WATER REPELLENCY	rating of 4.0 or greater
APPEARANCE RETENTION	4.0 or greater
SLIP RESISTANCE	Complies with ADA Guidelines for level surface NFSI Certified High-Traction
THERMAL INSULATION	0.73
NOISE REDUCTION COEFFICIENT	NRC Rating: 0.30*
IMPACT INSULATION CLASSIFICATION	IIC Rating: 64**
STAIN RESISTANCE	resists most challenging stains
INDOOR AIR QUALITY CERTIFICATION	CRI Green Label Plus™

ADHESIVE	Kinetex adhesive (full-spread pressure-sensitive) (optional) PreFix® pre-applied releasable adhesive
----------	---

INSTALLATION METHODS



kinetex

24"x24" MODULAR



P.O. BOX 2207

DALTON, GA 30722

P 800 241 4586

F 706 275 4433

JJFLOORING.COM

carpet | lvt | kinetex



FLOORING
A DIVISION OF ENGINEERED FLOORS