

INVISION
ETCHED



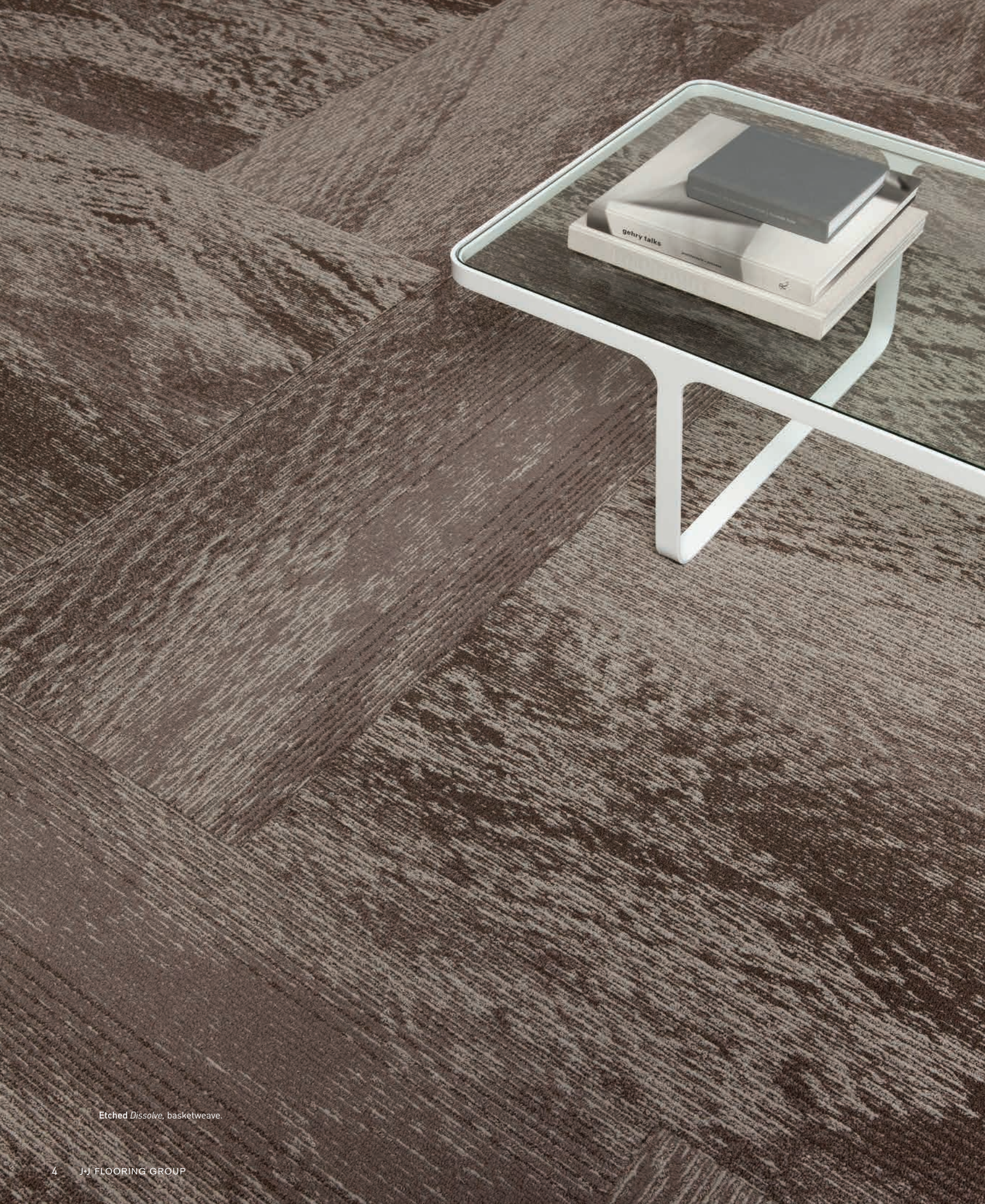
J+J FLOORING GROUP

From our establishment in 1957, we have become one of the oldest exclusive manufacturers of *commercial flooring* in the United States. As one of the largest privately held mills, our **FAMILY-OWNERSHIP** provides a *heritage* of proven performance and expansive industry knowledge. Most importantly, our focus has always been on *people...* ensuring them that our products deliver the highest levels of **BEAUTY**, **PERFORMANCE** and **DEPENDABILITY**.

INVISION **kinetex**

[cover] Etched *Dissolve* and *Stipple*, parquet.
[right] Etched *Chisel*, herringbone.



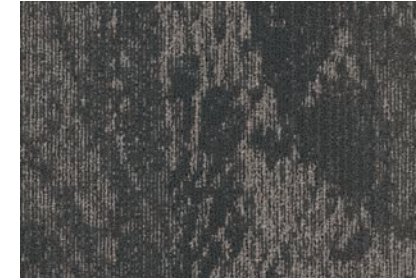


Etched Dissolve, basketweave.

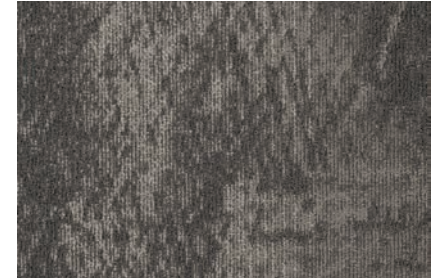
etched 7030



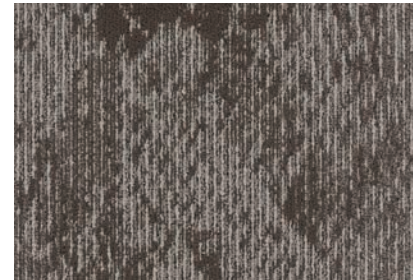
style 7030
color 1983
impression



style 7030
color 1984
engrave



style 7030
color 1985
inscribe



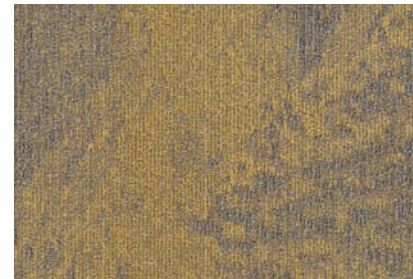
style 7030
color 1986
dissolve



style 7030
color 1987
mordant



style 7030
color 1988
stipple



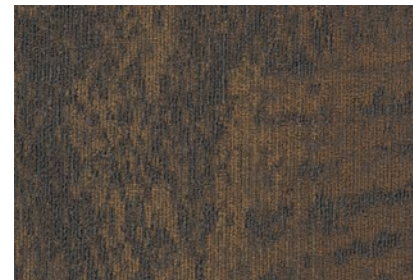
style 7030
color 1989
oxidize



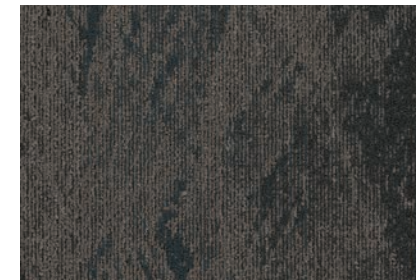
style 7030
color 1990
emulsion



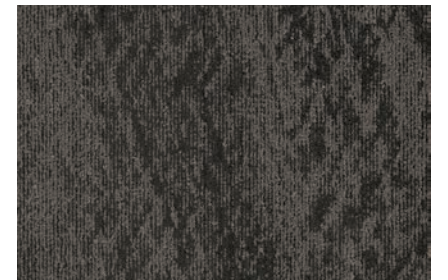
style 7030
color 1991
erode



style 7030
color 1992
chisel



style 7930
color 1993
ingrain



style 7030
color 1994
stamp

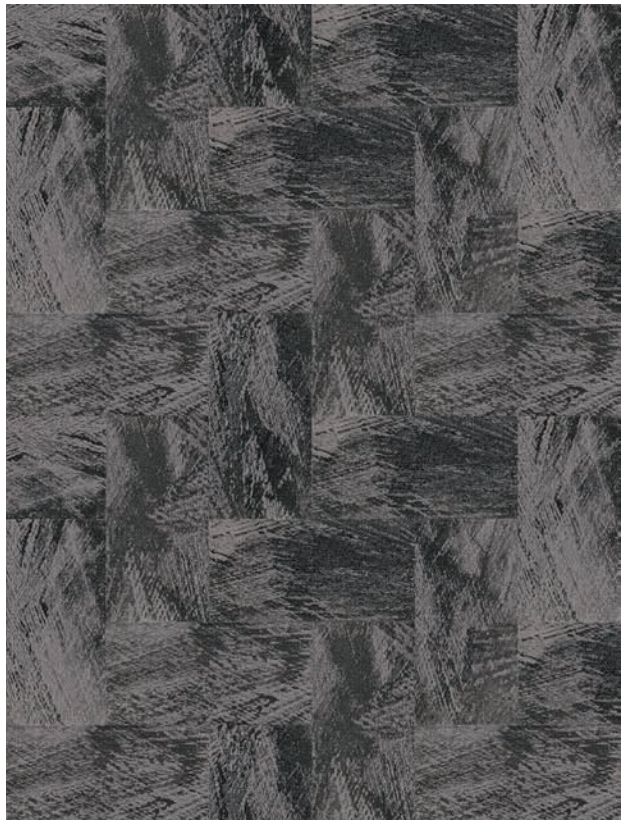
installation methods



ashlar



basketweave



herringbone



parquet



Etched Stamp, ashlar.



(top) Etched Stamp, ashlar. (above) Etched Dissolve, basketweave. (right) Etched Chisel, herringbone.

colorline overview

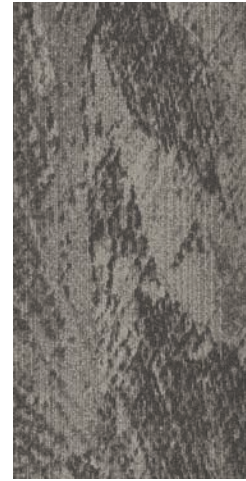
etched 7030



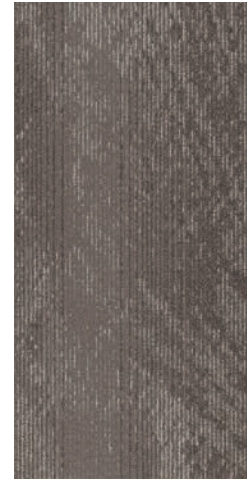
1983
impression



1984
engrave



1985
inscribe



1986
dissolve



1987
mordant



1988
stipple



1989
oxidize



1990
emulsion



1991
erode



1992
chisel

Multiple tiles may be required in order to view the complete range of colors within a single coloration.



1993
ingrain



1994
stamp

product details

FIBER

Encore® BCF Nylon with ColorLoc® Plus
Encore BCF nylon with ColorLoc Plus is manufactured to offer exceptional color, performance and appearance retention. Carpet using Encore BCF nylon with ColorLoc Plus - our patented stain resistant technology - is engineered to resist permanent staining and is backed by Lifetime Performance Warranties for stain resistance, colorfastness, color transfer, water bleed, bleach resistance and wear.

BACKINGS

Nexus® Modular
Nexus modular products can be installed in a variety of ways and are performance engineered to be visually appealing. In addition, they are designed to accommodate your long-term flooring budget.

- Manufactured in an ISO 14001 certified facility
- Contains pre-consumer recycled content and contributes to LEED
- Recyclable through the J+J Flooring Group's R4 Carpet Reclamation Program

OPTIONAL:
Nexus® Cushion

ADHESIVES

Commercialon® Premium Modular Adhesive
A high strength acrylic latex-based carpet adhesive specifically formulated for bonding modular PVC backed carpet to the floor. This premium adhesive is for use with all Invision Nexus Modular Tile products. This adhesive is guaranteed for the life of the installation when used in accordance with the J+J Flooring Group Carpet Installation Handbook. Commercialon Premium Modular Adhesive meets the CRI Low-VOC Emission Criteria, CRI ID# PSA-425402. Commercialon Premium Modular Adhesive is non toxic, has ultra-low odor and is antimicrobial in the dry state.

OPTIONAL:
TileTabs® - High Tack Adhesive Tabs

TECHNOLOGIES

ProTex® Soil Release
ProTex is a proprietary fluorochemical technology that is applied and bonded to the pile fiber to impede soiling and to improve cleanability. It is standard on all J+J Flooring Group products.

ProTex works similarly to the technology used in nonstick cookware by lowering the surface energy of the fibers which increases soil release properties. Very small soil particles cause carpet to appear dull. Thanks to ProTex, small soil particles are effectively removed by vacuuming or wet cleaning.

OPTIONAL:
ProSept® Antimicrobial
Sentir® Advanced Odor-Blocking Technology

corporate programs



Green Circle - Zero Waste to Landfill Operations Certification
We are proudly certified as a Zero Waste to Landfill manufacturer by GreenCircle Certified, LLC., a prominent third-party certifier of environmental claims. We are the first commercial flooring manufacturer in the United States to achieve this landfill free status and the first company in the industry to have its waste diversion efforts audited and verified by a recognized, third-party certifier.

To learn more about zero waste or our other initiatives see our sustainability progress report online at jjflooringgroup.com/sustainability



We're on it.
The J+J Flooring Group Premium Customer Experience.

Our Premium Customer Experience is a carefully crafted process by which we guarantee that our customers will get the products, services and the reliability they expect from us.

To learn more visit jjflooringgroup.com/about/cx

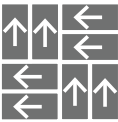
©2016 J&J Industries - This unique design is protected under the U.S. Copyright Act of 1976. Any unauthorized copying or duplication of this design constitutes copyright infringement in violation of federal law.

Due to the unique visual characteristics of modular carpets, pattern repeats and pattern run-off seams may appear more noticeable than in broadloom carpets. Such visual characteristics do not constitute a manufacturing defect, and as such, should be considered when selecting modular carpet and its installation.

These photographs are representations of the installation for this modular product. Your modular installation may look different than these photos depending upon individual tile placement, lighting, and overall space layout, including furnishings. Final tile placement and the resulting visual is thus the customer's, and not J+J Flooring Group's responsibility.

style	etched 7030 modular
construction	textured patterned loop
fiber type	100% Encore® BCF nylon with ColorLoc® Plus
dye method	solution / yarn dyed
ounce weight	24 oz/sy (814 grams/m²)
gauge	1/12 (4.72 rows/cm)
backing	Nexus® modular
size	18" x 36"
pattern repeat	N/A
total thickness (nominal average)	.25 inches (0.64 cm)
special technology	ProTex® fluorochemical
optional special technologies	ProSept® antimicrobial Sentir® advanced odor blocking treatment
physical testing	flooring radiant panel – (class 1) pill test – (passes) smoke density – (less than 450 flaming) static generation – (less than 3.5 kv) ADA compliance – (compliant for accessible routes)
warranties	lifetime fiber performance for wear lifetime fiber performance for static lifetime stain removal lifetime colorfastness to light and atmospheric contaminants lifetime for tuft bind strength (edge ravel, yarn pulls, zippering) lifetime against delamination

installation methods



Parquet



Basketweave



Herringbone



Ashlar



jjflooringgroup.com

P.O. Box 1287
Dalton, GA 30722
p 800 241 4586
f 706 275 4433

INVISION **kinetex**
