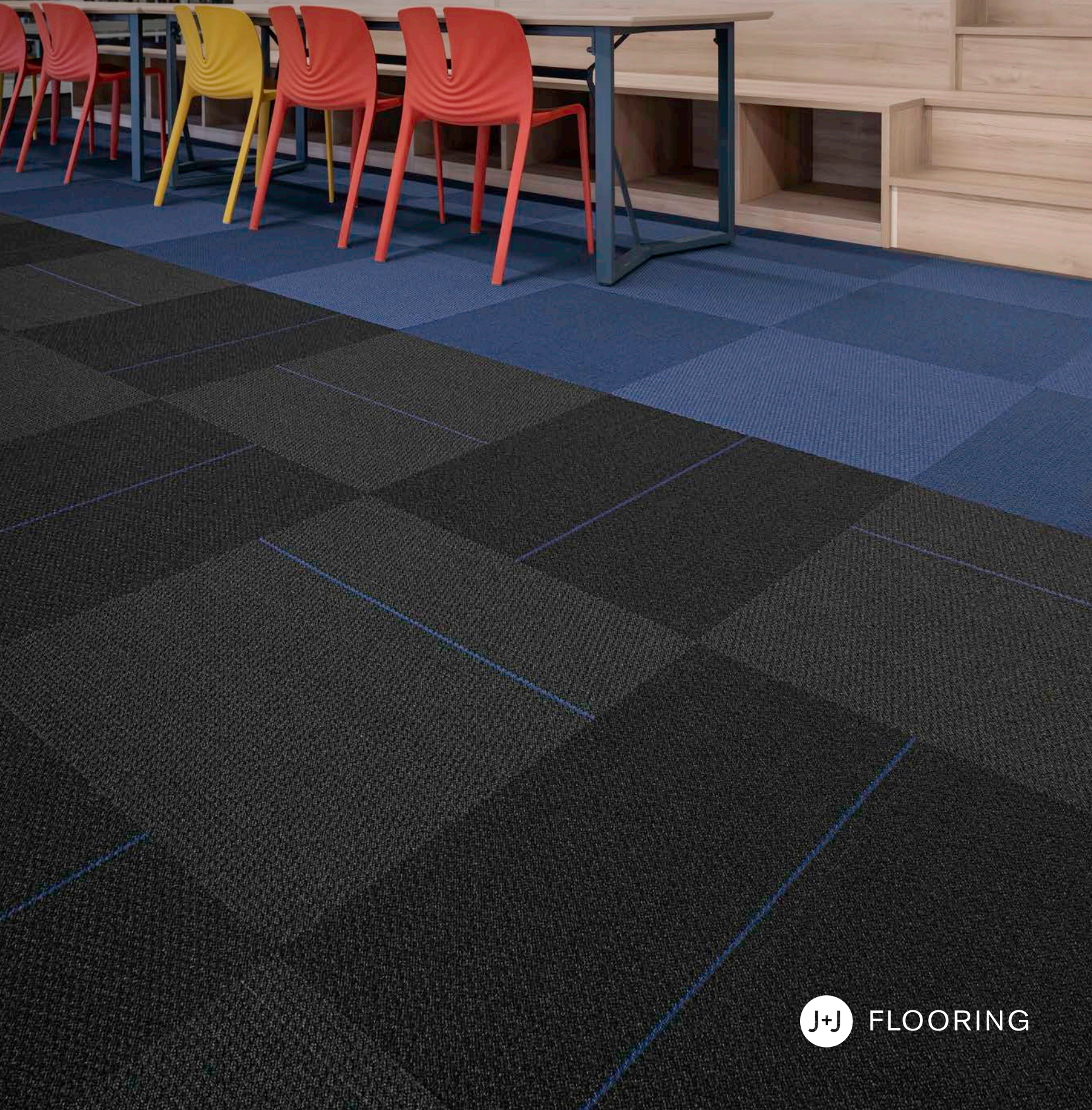


kinetex

24" x 24" MODULAR

Flash Pop



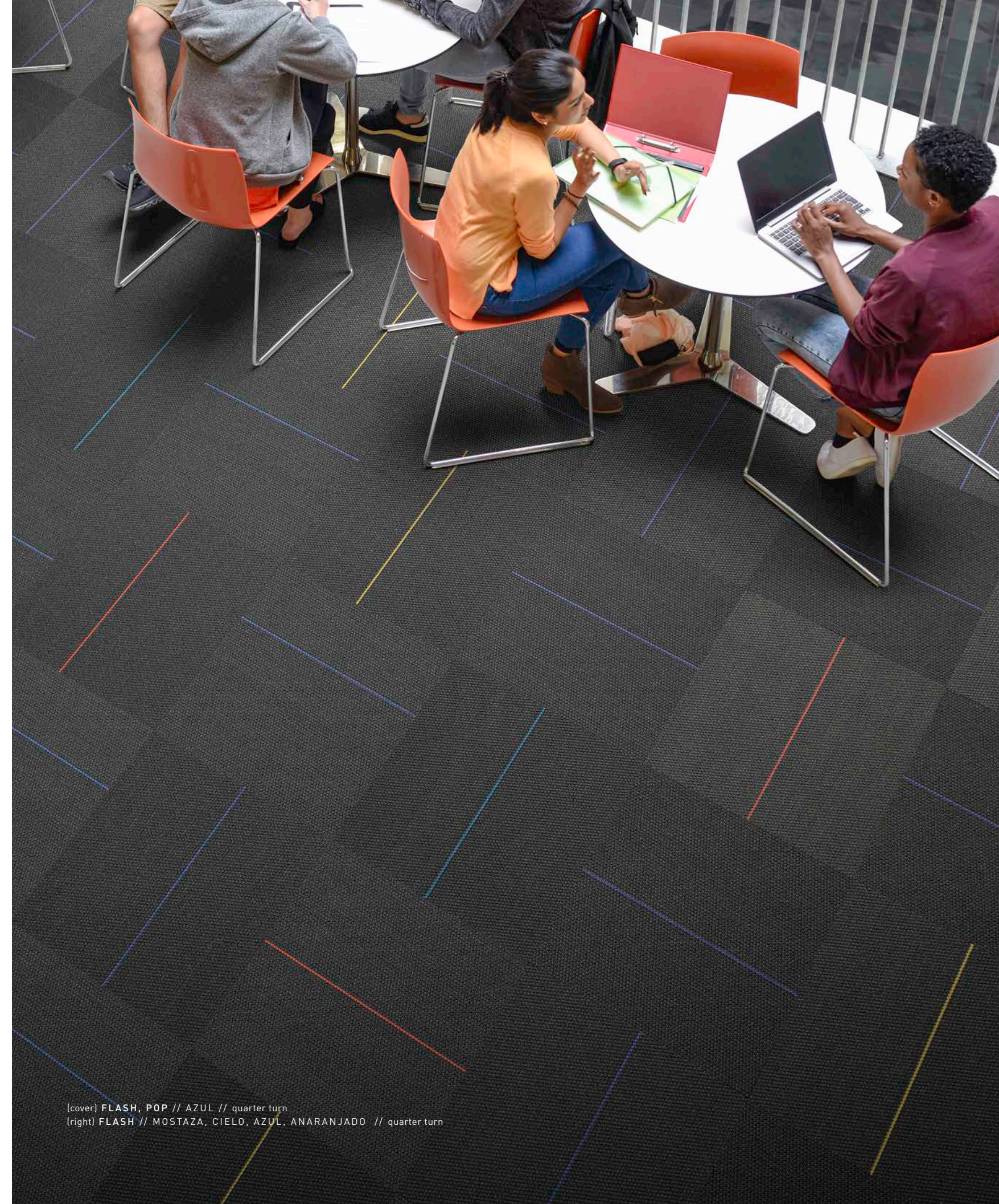
Flash Pop



INSPIRATION

With a solitary streak of color against a solid background of enhanced texture, **Flash** is the ideal product to provide subtle, unexpected accents in those spaces that need just a hint of a non-neutral hue. Each colorway of Flash can stand alone or multiple colorways can be used in tandem to effortlessly blaze through large projects and tie together a multitude of palettes and finishes.

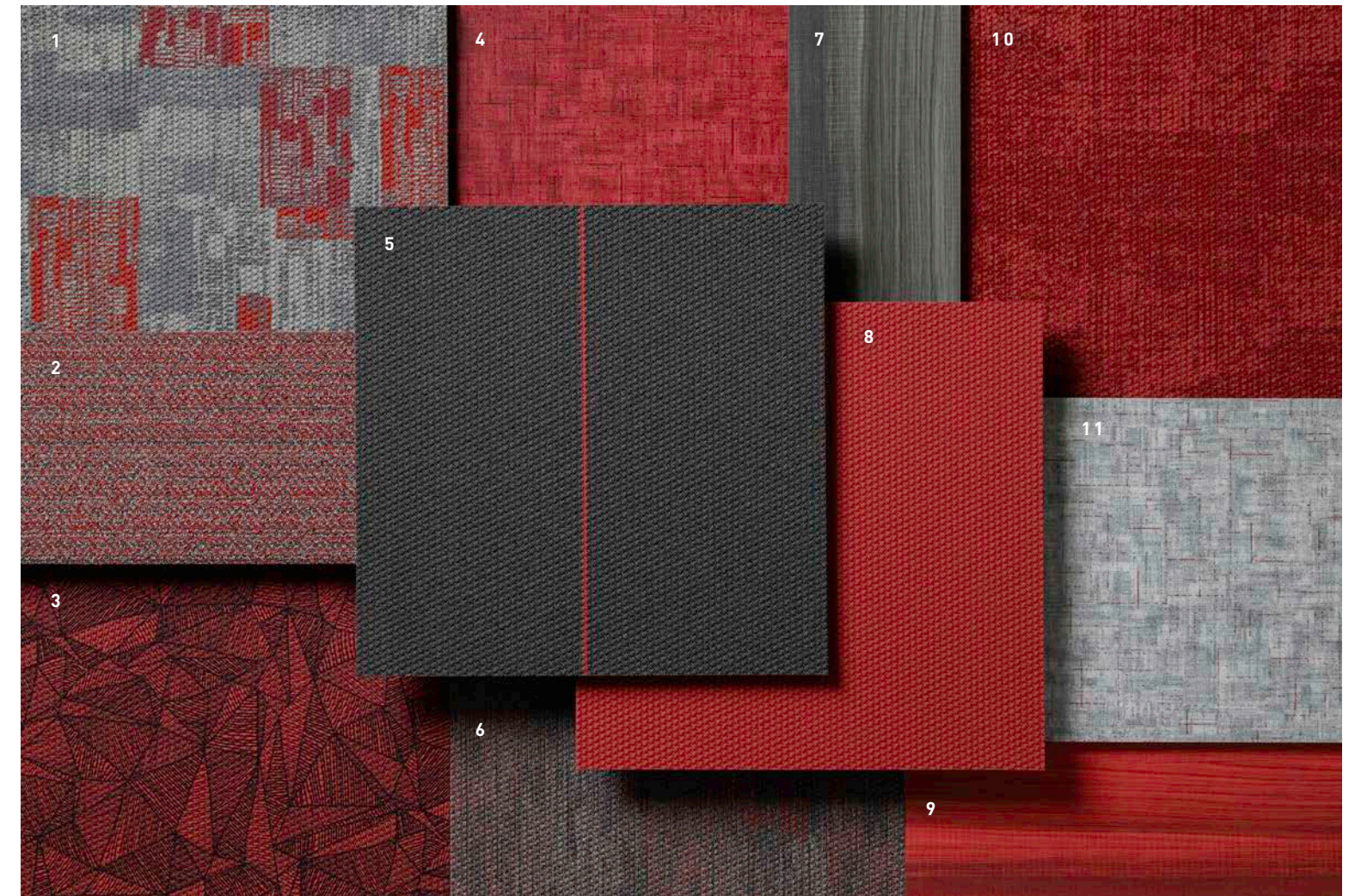
And if just a flash of color isn't enough to make your space memorable, the addition of its companion product, **Pop**, easily takes the space to a higher level of intensity. Both products are available in 24" x 24" square modules and 12 distinct colors that coordinate across the entire Kinetex line.



(cover) FLASH, POP // AZUL // quarter turn
(right) FLASH // MOSTAZA, CIELO, AZUL, ANARANJADO // quarter turn



FLASH // ROJO // quarter turn
 POP // ROJO // accent
 STEP BY STEP // IRON GARNET // ashlar



COORDINATES

Beyond the beauty of individual products, our flooring coordinates effortlessly across all of our product platforms—modular carpet tile, broadloom, LVT and Kinetex textile composite flooring. This offering enables you to blend a range of designs with tonal simplicity to create palettes that reflect the demands of each unique space.

1. CATALYST // 1841 // 2850 Impulse // Kinetex

2. JACK // 7914 // 3428 Sleeve // Modular

3. TRI-PLEX II // 1852 // 2597 Degrees // Kinetex

4. STEP BY STEP // V5043 + V5044 // 1126 Garnet // LVT

5. FLASH // 1818 // 1723 Rojo // Kinetex

6. GAME CHANGER // 1851 // 3436 Critical // Kinetex

7. MAKE YOUR MARK // V5012 + V5013 // 1064 Smoke // LVT

8. POP // 1816 // 1712 Rojo // Kinetex

9. MAKE YOUR MARK // V5012 + V5013 // 1074 Candy // LVT

10. NETWORK // 1842 // 2907 System // Kinetex

11. STEP BY STEP // V5043 + V5044 // 1125 Iron Garnet // LVT



FLASH, POP // VERDE // quarter turn
MAKE YOUR MARK // LIME // ashlar



COORDINATES

Beyond the beauty of individual products, our flooring coordinates effortlessly across all of our product platforms—modular carpet tile, broadloom, LVT and Kinetex textile composite flooring. This offering enables you to blend a range of designs with tonal simplicity to create palettes that reflect the demands of each unique space.

1. **COLOR ZONE** // 7479 // 3221 Ash // Modular

2. **DIGITAL** // 1859 // 3571 Mainframe // Kinetex

3. **Z-FACTOR** // 1844 // 2863 Probability // Kinetex

4. **MAKE YOUR MARK** // V5012 + V5013 // 1066 Sapphire // LVT

5. **POP** // 1816 // 1717 Cielo // Kinetex

6. **FLASH** // 1818 // 1726 Cielo // Kinetex

7. **COMPOSITE** // V5041 + V5042 // 1115 Suitable // LVT

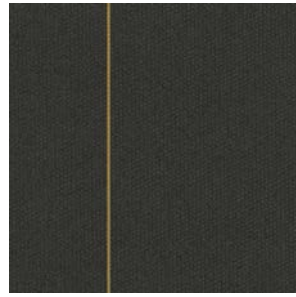
8. **NETWORK** // 1842 // 2856 Router // Kinetex

9. **NETWORK** // 1842 // 2908 Wiring // Kinetex

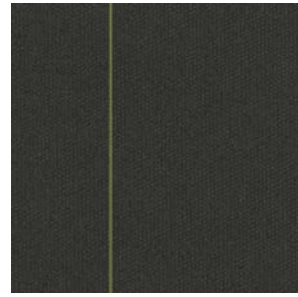
10. **MAKE YOUR MARK** // V5012 + V5013 // 1063 Shadow // LVT

11. **NON-FICTION II** // 7026 // 3001 Glossary // Modular

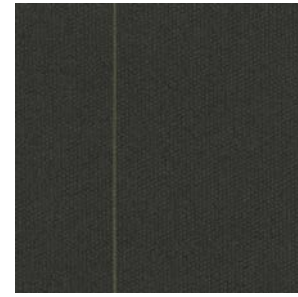
Flash 24"x24" MODULAR



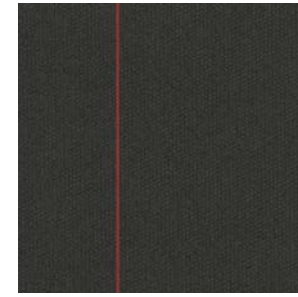
COLOR 1720
mostaza



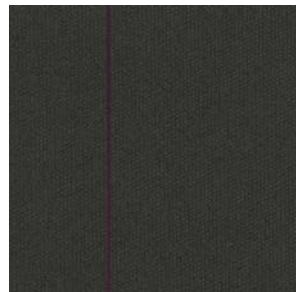
COLOR 1721
verde



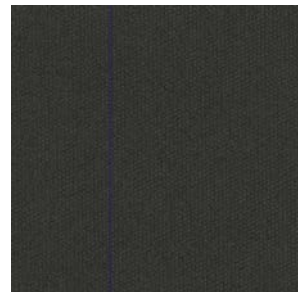
COLOR 1722
esmeralda



COLOR 1723
rojo



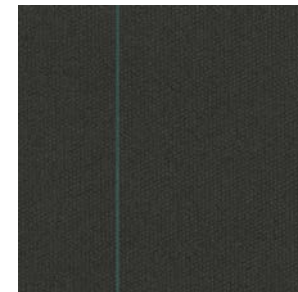
COLOR 1724
violeta



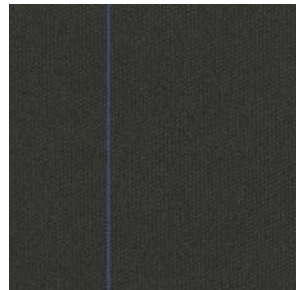
COLOR 1725
morado



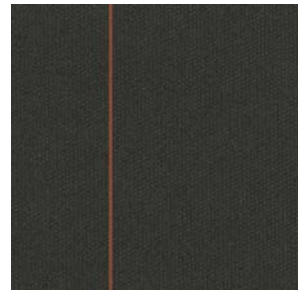
COLOR 1726
cielo



COLOR 1727
turquesa

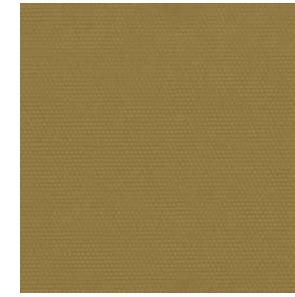


COLOR 1728
azul



COLOR 1729
anaranjado

Pop 24"x24" MODULAR



COLOR 1710
mostaza



COLOR 1715
verde



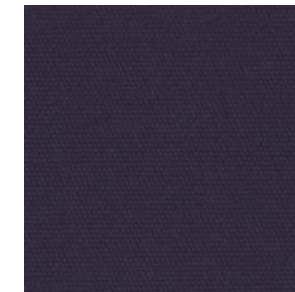
COLOR 1716
esmeralda



COLOR 1712
rojo



COLOR 1713
violeta



COLOR 1714
morado



COLOR 1717
cielo



COLOR 1718
turquesa



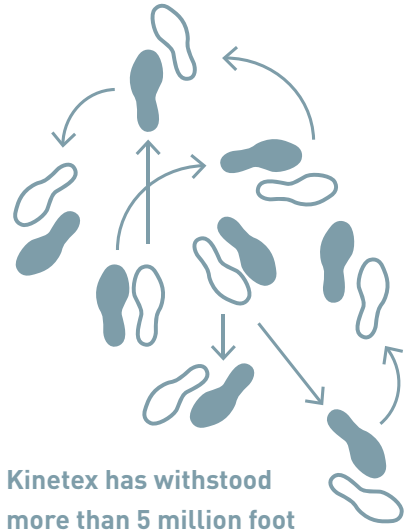
COLOR 1719
azul



COLOR 1711
anaranjado

1. DURABILITY

Kinetex delivers enduring performance, year after year. One of the most thoroughly tested flooring products on the market, it has outstanding dimensional stability and unparalleled crush resistance.

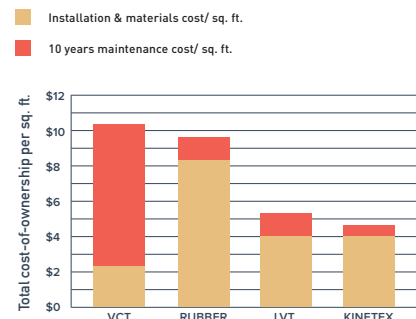


Kinetex has withstood more than 5 million foot traffic events.

2. MAINTENANCE

Tough to wear out, easy to maintain. With vacuuming and encapsulation cleaning, Kinetex looks like new, year after year. Thanks to a lightweight face construction, Kinetex retains less water than carpet and dries faster. It is easily sanitized and resists the most challenging staining agents.

Life Cycle Costs: INSTALLATION AND MAINTENANCE



3. MOISTURE TOLERANCE

The most common subfloor, concrete, can release excessive moisture and destroy floor covering systems—unless costly precautions are taken before installation. But moisture mitigation isn't necessary with Kinetex; its breathable nature allows moisture to pass through its backing, instead of trapping it underneath. Kinetex textile composite flooring will perform in elevated RH slabs up to 100%.

100% RH TOLERANCE

NO VAPOR BARRIER REQUIRED—regardless if the slab is new or old, regardless of hydrostatic pressure

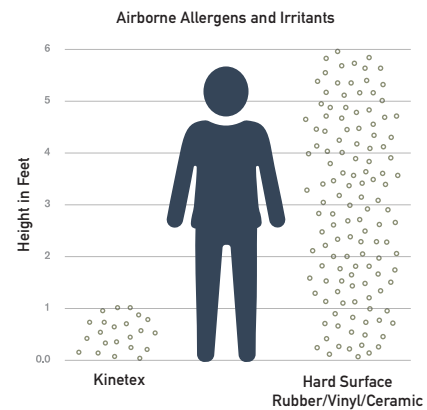
BREATHABLE No trapped moisture. 3rd party tested and verified.

Thousands of installations worldwide since 2012. NO MOISTURE-RELATED CLAIMS.

4. HEALTH

Kinetex minimizes air particulates that trigger allergies and cause infection. It easily surpasses California's 01350 requirements—the most popular U.S. standard for evaluating and restricting VOC emissions indoors.

Easy Breathing

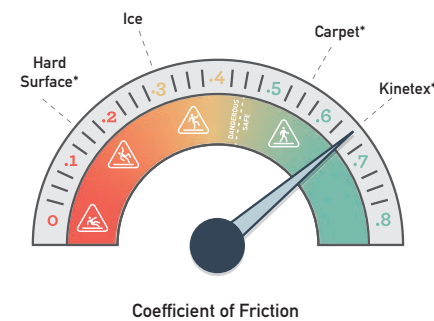


Foot Traffic Dust Emissions Test (ESO Fine Test Dust 12103-142)

5. SAFETY

Kinetex is the only wall-to-wall textile floor covering certified as High-Traction by the National Floor Safety Institute. Its innovative construction creates one of the most slip-resistant flooring surfaces ever tested—wet or dry—to prevent falls before they happen.

Gaining Traction

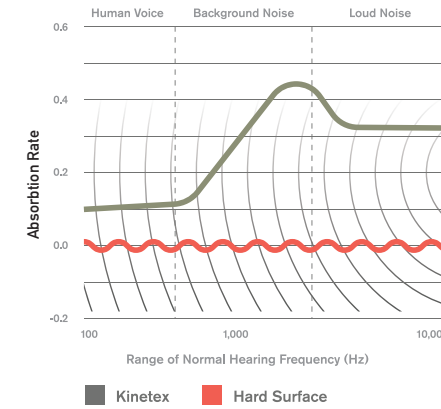


*wet soapy surfaces NFSI HIGH-TRACTION

6. ACOUSTICS

Kinetex delivers unparalleled acoustic performance, with one of the highest Noise Reduction Coefficients (NRC) and Impact Insulation Classifications (IIC) ratings of any commercial flooring product.

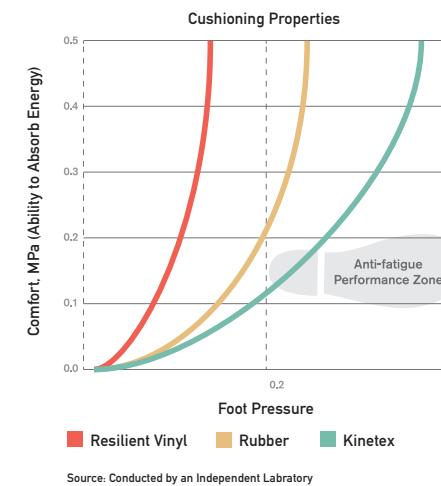
Keeping Quiet



7. COMFORT

Kinetex, a soft textile surface with a high-density backing, has exceptional anti-fatigue properties and minimal rolling resistance. Because it can absorb energy, Kinetex has the potential to reduce repetitive foot stress injuries and other injuries related to standing and frequent movement from place to place.

Step-by-Step Support



Source: Conducted by an Independent Laboratory

8. SUSTAINABILITY

Made with 45% post-consumer recycled content, each Kinetex tile contains the equivalent of 27 used water bottles. This dematerialized flooring product and its longer life mean that Kinetex has a much smaller environmental footprint than other commercial flooring options. Kinetex is NSF/ANSI-140 Platinum certified (the industry-leading standard for sustainability) and has a Red List Free DECLARE label. Furthermore, Kinetex has been verified as a Carbon Neutral product.

Second Chances

45% post-consumer content



Each Kinetex tile contains the equivalent of 27 plastic water bottles.

KINETEX INSTALLATION

Although Kinetex is a modular tile, it does not install like traditional modular carpet. Installers should carefully read the full Kinetex installation instructions. Special attention should be applied until installers gain experience with module placement. Installers should perform site and material conditioning and surface preparation, and there should be no condensation or standing water at the time of installation. Kinetex material is lightweight and is easy to cut, which reduces installation time. Kinetex uses J+J Flooring's proven adhesive system with a lifetime performance warranty.

Kinetex Adhesive

Kinetex Adhesive is formulated for Kinetex textile composite flooring products and is built to bond the textile composite to the properly prepared substrates for the life of the installation. Products with Kinetex Adhesive will perform in elevated RH slabs up to 100%.

Please see the Kinetex installation instructions for full installation details.

WARRANTIES

We stand behind every aspect of Kinetex and extend certain lifetime warranties. Each warranty is covered for the useful life of the product, provided that installation and maintenance is in accordance with J+J Flooring’s Kinetex Installation instructions.

Wear Layer Warranties

Product Performance	Colorfastness to Light & Crocking	Stain Removal	Static Protection
Lifetime	Lifetime	Lifetime	Lifetime

Backing Warranties

Protection from Edge Ravel	Protection from Delamination Failure	Dimensional Stability
Lifetime	Lifetime	Lifetime



©2025 J+J Flooring Group, LLC - This unique design is protected under the U.S. Copyright Act of 1976. Any unauthorized copying or duplication of this design constitutes copyright infringement in violation of federal law. Due to the unique visual characteristics of modular carpets, pattern repeats and pattern run-off seams may appear more noticeable than in broadloom carpets. Such visual characteristics do not constitute a manufacturing defect, and as such, should be considered when selecting modular carpet and its installation.

These photographs are representations of the installation for this modular product. Your modular installation may look different than these photos depending upon individual tile placement, lighting, and overall space layout, including furnishings. Final tile placement and the resulting visual is thus the customer’s, and not J+J Flooring’s responsibility.

*NRC rating is a measure of the effectiveness of a material in absorbing sound. The higher the NRC rating, the greater the ability of the flooring product to absorb airborne noise. Independent laboratory testing of Kinetex has shown an average NRC rating of 0.30 (bare concrete flooring will typically provide a NRC Rating of 0.015).

**IIC is a rating of the insulation from impact noise. The higher the IIC rating, the greater the sound insulation. Independent laboratory testing of Kinetex has shown an average IIC Rating of .64 (bare concrete flooring will typically provide an IIC Rating of 34) NOTE: Test results and testing laboratory will vary, and the above information is not guaranteed.

STYLE	Flash 1818 modular	Pop 1816 modular
WEAR LAYER	solution dyed polyester	solution dyed polyester
BACKING	polyester felt cushion	polyester felt cushion
TOTAL WEIGHT (nominal average)	4.5 oz - 5.2 oz/square foot	4.5 oz - 5.2 oz/square foot
TOTAL THICKNESS (nominal average)	0.205 inches	0.205 inches
DIMENSIONS	24 x 24 inch modules	24 x 24 inch modules
PACKAGING	18 modules per box – 72 square feet	18 modules per box – 72 square feet


ENVIRONMENTAL ATTRIBUTES

CARBON FOOTPRINT	carbon neutral	carbon neutral
RED LIST FREE	DECLARE label	DECLARE label
RECYCLED CONTENT	45% (post consumer)	45% (post consumer)
LEED SCORECARD	IEQ 4.1 and IEQ 4.3	IEQ 4.1 and IEQ 4.3
NSF/ANSI 140 CERTIFICATION	platinum	platinum

TESTING

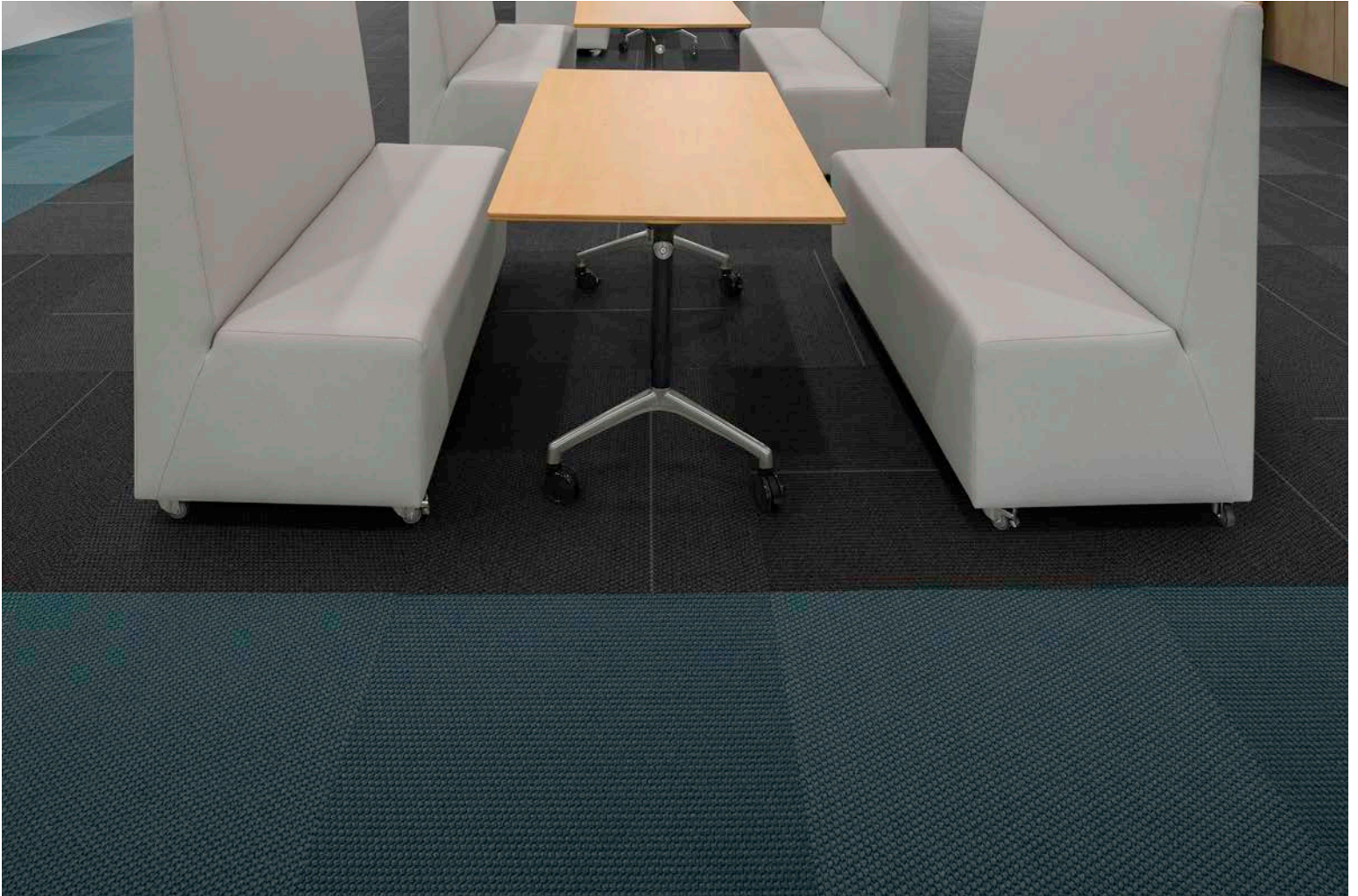
FLOORING RADIANT PANEL	class 1	class 1
SMOKE DENSITY	less than 450 (flaming & non-flaming)	less than 450 (flaming & non-flaming)
ELECTROSTATIC PROPENSITY	less than 3.0 kv	less than 3.0 kv
COLORFASTNESS TO LIGHT	rating of 4.0 or greater	rating of 4.0 or greater
COLORFASTNESS TO CROCKING	rating of 4.0 or greater	rating of 4.0 or greater
WATER REPELLENCY	rating of 4.0 or greater	rating of 4.0 or greater
APPEARANCE RETENTION	4.0 or greater	4.0 or greater
SLIP RESISTANCE	Complies with ADA Guidelines for level surface NFSI Certified High-Traction	Complies with ADA Guidelines for level surface NFSI Certified High-Traction
THERMAL INSULATION	0.73	0.73
NOISE REDUCTION COEFFICIENT	NRC Rating: 0.30*	NRC Rating: 0.30*
IMPACT INSULATION CLASSIFICATION	IIC Rating: 64**	IIC Rating: 64**
STAIN RESISTANCE	resists most challenging stains	resists most challenging stains
INDOOR AIR QUALITY CERTIFICATION	CRI Green Label Plus™	CRI Green Label Plus™

ADHESIVE	Kinetex adhesive (full-spread pressure-sensitive)	Kinetex adhesive (full-spread pressure-sensitive)
-----------------	---	---

INSTALLATION METHODS	 1/4 turn	 1/4 turn
-----------------------------	---	---

kinetex

24" x 24" MODULAR



P.O. BOX 2207

DALTON, GA 30722

P 800 241 4586

F 706 275 4433

JJFLOORING.COM

JX3223M06

carpet | lvt | kinetex

 **FLOORING**
A DIVISION OF ENGINEERED FLOORS