

# FRACTURED PLAID / TWILL WEAVE







From our establishment in 1957, we have become one of the oldest exclusive manufacturers of *commercial flooring* in the United States. As one of the largest privately held mills, our **FAMILY-OWNERSHIP** provides a *heritage* of proven performance and expansive industry knowledge. Most importantly, our focus has always been on *people...* ensuring them that our products deliver the highest levels of **BEAUTY**, **PERFORMANCE** and **DEPENDABILITY**.

carpet | lvt | **kinetex**

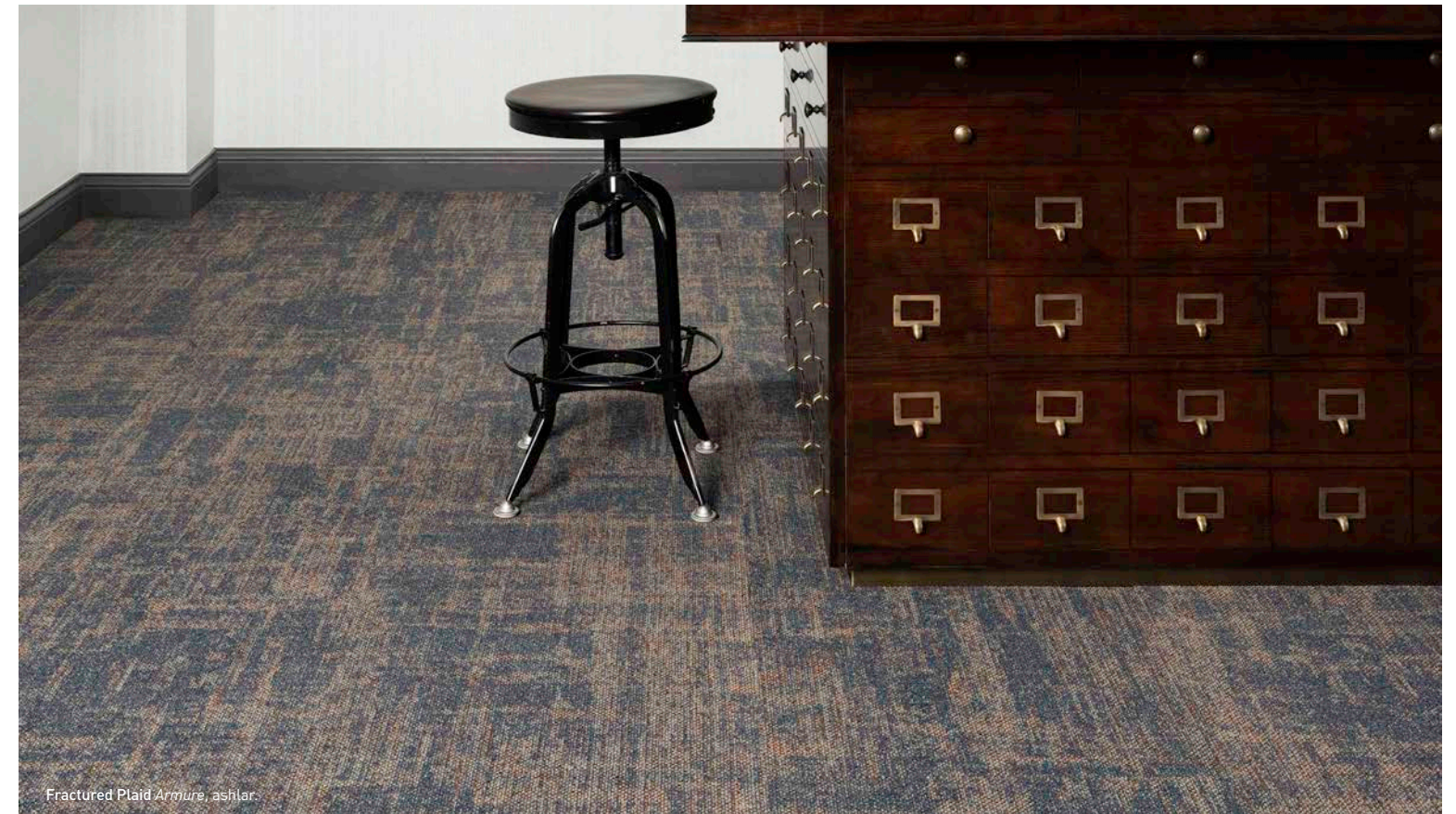
(cover) Twill Weave *Fleck*, monolithic with Fractured Plaid, *Fleck* inset.  
(right) Fractured Plaid *Fleck*, ashlar with Twill Weave, *Fleck* inset.







Fractured Plaid *Cloth*, monolithic



Fractured Plaid *Armure*, ashlar



Fractured Plaid *Armure*, brick





Fractured Plaid *Fleck*, aşılar

## fractured plaid 7587



style 7587  
color 2871  
fleck



style 7587  
color 2872  
ticking



style 7587  
color 2873  
calico



style 7587  
color 2874  
mills



style 7587  
color 2875  
eyelet



style 7587  
color 2876  
gauze



style 7587  
color 2877  
felt



style 7587  
color 2878  
cloth



style 7587  
color 2879  
percale



style 7587  
color 2880  
armure



style 7587  
color 2881  
brocade



style 7587  
color 2882  
chintz



style 7587  
color 2883  
corded



style 7587  
color 2884  
plush





Twill Weave Cloth, monolithic.



Twill Weave Cloth, brick.



Twill Weave Armure, ashlar.





## twill weave 7586



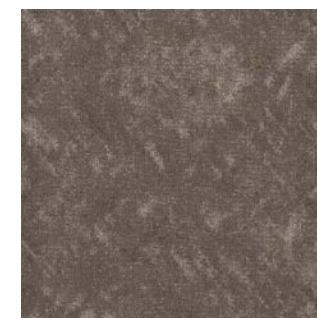
style 7586  
color 2871  
fleck



style 7586  
color 2872  
ticking



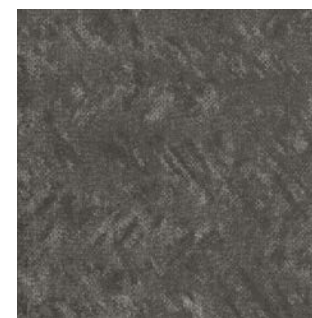
style 7586  
color 2873  
calico



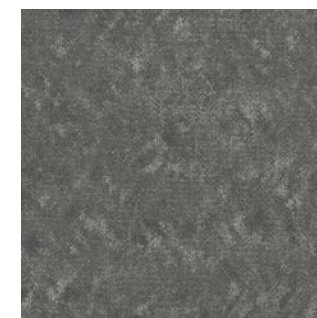
style 7586  
color 2874  
mills



style 7586  
color 2875  
eyelet



style 7586  
color 2876  
gauze



style 7586  
color 2877  
felt



style 7586  
color 2878  
cloth



style 7586  
color 2879  
percale



style 7586  
color 2880  
armure



style 7586  
color 2881  
brocade



style 7586  
color 2882  
chintz



style 7586  
color 2883  
corded



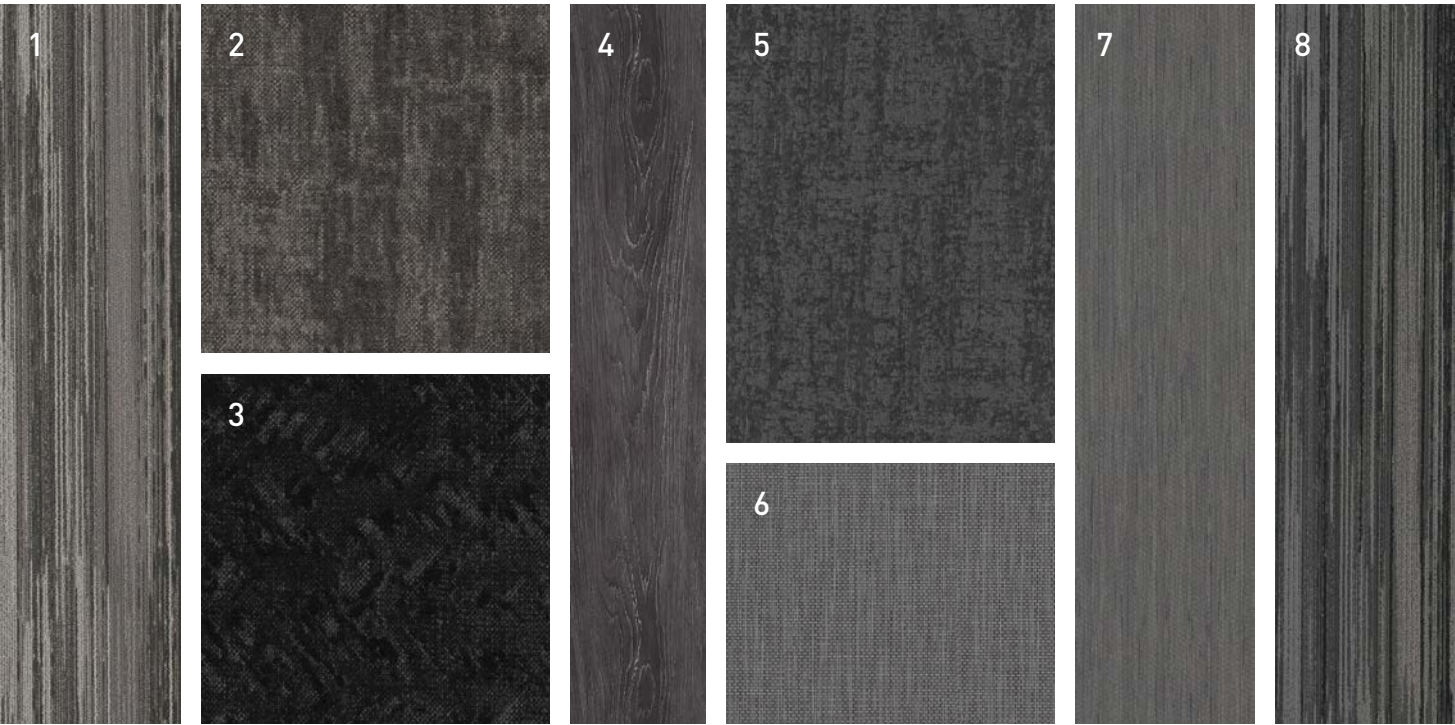
style 7586  
color 2884  
plush

Twill Weave Fleck, monolithic.





coordinating palette



Beyond the beauty of individual products, our flooring coordinates effortlessly with each other. This offering enables you to blend a range of designs with tonal simplicity to create palettes that reflect the demands of each unique space.

1	Stria	7585	#2752 Poplin	Modular
2	Fractured Plaid	7587	#2884 Plush	Modular
3	Twill Weave	7586	#2872 Ticking	Modular
4	Framework	V5001	#1014 Partition	LVT
5	Craftwork	6599	#2207 Tailor	Broadloom
6	Tatami	V5003	#1019 Edo	LVT
7	Against the Grain	1840	#2820 Rye	Kinetex
8	Stria	7585	#2740 Blend	Modular

Fractured Plaid *Fleck*, ashlar and Twill Weave *Fleck*, ashlar



product details

FIBER

Encore® BCF Nylon with ColorLoc® Plus

Encore BCF nylon with ColorLoc Plus is manufactured to offer exceptional color, performance and appearance retention. Carpet using Encore BCF nylon with ColorLoc Plus - our patented stain resistant technology - is engineered to resist permanent staining and is backed by Lifetime Performance Warranties for stain resistance, colorfastness, color transfer, water bleed, bleach resistance and wear.

BACKINGS

Nexus® Modular

Nexus modular products can be installed in a variety of ways and are performance engineered to be visually appealing. In addition, they are designed to accommodate your long-term flooring budget.

- Manufactured in an ISO 14001 certified facility
- Contains pre-consumer recycled content and contributes to LEED
- Recyclable through the J+J Flooring Group's R4 Carpet Reclamation Program

MOISTURE

Are high levels of moisture in your concrete slab causing issues with your project's floor covering? We can help.

- Nexus® Modular Carpet with TileTabs – 99% RH
- Cost-efficient
- Long-term performance
- Straightforward, easy-to-understand Lifetime warranty
- Requires no special floor preparation

Warranty: Installed with TileTabs	Warranty: Installed with Commercialon® Premium Adhesive (non-prorated)	Warranty: Installed with any other Adhesive	Max RH, pH: Installed without Commercialon® Premium Sealer	Max RH, pH: Installed with Commercialon® Premium Adhesive
lifetime	lifetime	1 year	90% RH, pH 9	99% RH, pH 11 (Tiletabs) -- 97% RH, pH 11 (Commercialon)

Adhesive

Commercialon® Premium Modular Adhesive

A high strength acrylic latex-based carpet adhesive specifically formulated for bonding modular PVC backed carpet to the floor. This premium adhesive is for use with all Nexus Modular Tile products. This adhesive is guaranteed for the life of the installation when used in accordance with the J+J Flooring Group Carpet Installation Handbook. Commercialon Premium Modular Adhesive meets the CRI Low-VOC Emission Criteria, CRI ID# PSA-425402. Commercialon Premium Modular Adhesive is non toxic, has ultra-low odor and is antimicrobial in the dry state.

OPTIONAL:

TileTabs – High Tack Adhesive Tabs (modular only)

TECHNOLOGIES

ProTex® Anti-Soil Treatment

ProTex is a proprietary anti-soil treatment technology that is applied and bonded to the pile fiber to impede soiling and to improve cleanability. It is standard on all J+J Flooring Group products.

OPTIONAL:

ProSept® Antimicrobial

Sentir® Advanced Odor-Blocking Technology

corporate programs



Green Circle - Zero Waste to Landfill Operations Certification

We are proudly certified as a Zero Waste to Landfill manufacturer by GreenCircle Certified, LLC., a prominent third-party certifier of environmental claims. We are the first commercial flooring manufacturer in the United States to achieve this landfill free status and the first company in the industry to have its waste diversion efforts audited and verified by a recognized, third-party certifier.

To learn more about zero waste or our other initiatives see our sustainability progress report online at [jjflooring.com/sustainability](http://jjflooring.com/sustainability)



We're on it.  
The J+J Flooring Group Premium Customer Experience.

Our Premium Customer Experience is a carefully crafted process by which we guarantee that our customers will get the products, services and the reliability they expect from us.

To learn more visit:  
[jjflooring.com/customer-experience/](http://jjflooring.com/customer-experience/)

©2019 J+J Flooring Group, LLC - This unique design is protected under the U.S. Copyright Act of 1976. Any unauthorized copying or duplication of this design constitutes copyright infringement in violation of federal law.

Due to the unique visual characteristics of modular carpets, pattern repeats and pattern run-off seams may appear more noticeable than in broadloom carpets. Such visual characteristics do not constitute a manufacturing defect, and as such, should be considered when selecting modular carpet and its installation.

These photographs are representations of the installation for this modular product. Your modular installation may look different than these photos depending upon individual tile placement, lighting, and overall space layout, including furnishings. Final tile placement and the resulting visual is thus the customer's, and not J+J Flooring Group's responsibility.



style	fractured plaid 7587 modular	twill weave 7586 modular
construction	tip-sheared patterned loop	tip-sheared patterned loop
fiber type	Encore® BCF nylon with ColorLoc® Plus	Encore® BCF nylon with ColorLoc® Plus
dye method	solution/yarn dyed	solution/yarn dyed
ounce weight	23.0 oz/sy (780 grams/m²)	23.0 oz/sy (780 grams/m²)
gauge	1/12 (4.72 rows/cm)	1/12 (4.72 rows/cm)
backing	Nexus® modular	Nexus® modular
size	24" x 24" (61 cm x 61 cm)	24" x 24" (61 cm x 61 cm)
pattern repeat	n/a	n/a
total thickness (nominal average)	.25 inches (0.635 cm)	.25 inches (0.635 cm)
special technology	ProTex® anti-soil treatment	ProTex® anti-soil treatment
optional special technologies	ProSept® antimicrobial Sentir® advanced odor blocking treatment	ProSept® antimicrobial Sentir® advanced odor blocking treatment
physical testing	flooring radiant panel (class 1) pill test – (passes) smoke density (less than 450 flaming) static generation -(less than 3.5 kv) ADA compliance (compliant for accessible routes)	flooring radiant panel (class 1) pill test – (passes) smoke density (less than 450 flaming) static generation -(less than 3.5 kv) ADA compliance (compliant for accessible routes)
warranties	lifetime fiber performance for wear lifetime fiber performance for static lifetime stain removal lifetime colorfastness to light and atmospheric contaminants lifetime for tuft bind strength (edge ravel, yarn pulls, zippering) lifetime against delamination lifetime dimensional stability	lifetime fiber performance for wear lifetime fiber performance for static lifetime stain removal lifetime colorfastness to light and atmospheric contaminants lifetime for tuft bind strength (edge ravel, yarn pulls, zippering) lifetime against delamination lifetime dimensional stability

modular installation methods



ashlar



brick



monolithic



quarter turn





## FLOORING GROUP

A DIVISION OF ENGINEERED FLOORS

[jjflooring.com](http://jjflooring.com)

P.O. Box 1287  
Dalton, GA 30722  
p 800 241 4586  
f 706 275 4433

carpet | lvt | kinetex

---