

INVISION
INCOGNITO / ALTER EGO



J+J FLOORING GROUP

From our establishment in 1957, we have become one of the oldest exclusive manufacturers of *commercial flooring* in the United States. As one of the largest privately held mills, our **FAMILY-OWNERSHIP** provides a *heritage* of proven performance and expansive industry knowledge. Most importantly, our focus has always been on *people*... ensuring them that our products deliver the highest levels of **BEAUTY, PERFORMANCE** and **DEPENDABILITY**.

INVISION **kinetex**

[cover] Alter Ego *Operative*, monolithic.
[right] Incognito and Alter Ego *Operative*, monolithic.





Incognito *Espionage*, monolithic.

incognito 7069



style 7069
color 1837
operative



style 7069
color 1838
espionage



style 7069
color 1839
classified



style 7069
color 1840
code word



style 7069
color 1841
intelligence



style 7069
color 1842
infiltrate



style 7069
color 1843
wiretap

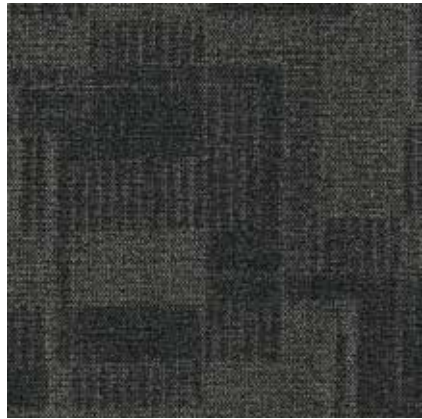


style 7069
color 1844
sleeper



style 7069
color 1845
cryptic

alter ego 7070



style 7070
color 1837
operative



style 7070
color 1838
espionage



style 7070
color 1839
classified



style 7070
color 1840
code word



style 7070
color 1841
intelligence



style 7070
color 1842
infiltrate



style 7070
color 1843
wiretap



style 7070
color 1844
sleeper



style 7070
color 1845
cryptic

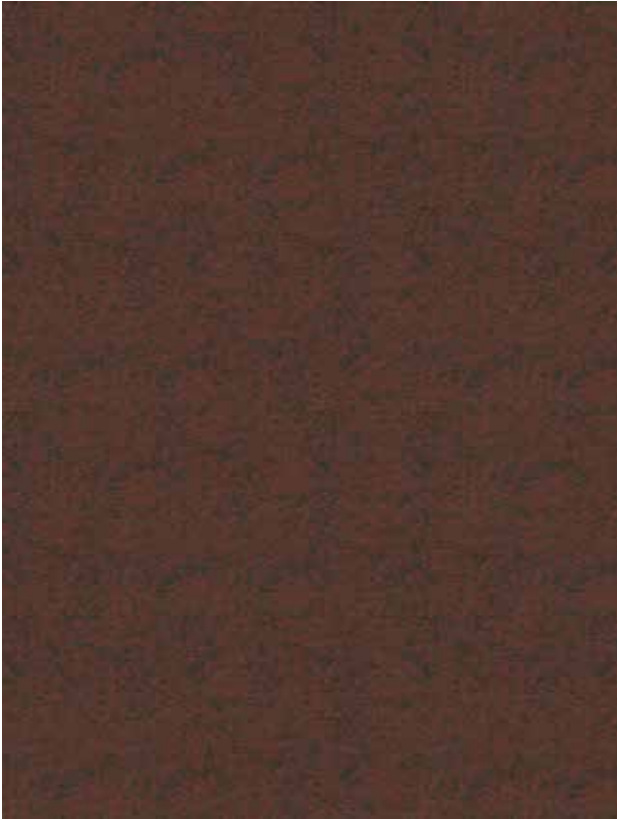


Alter Ego *Classified*, monolithic.

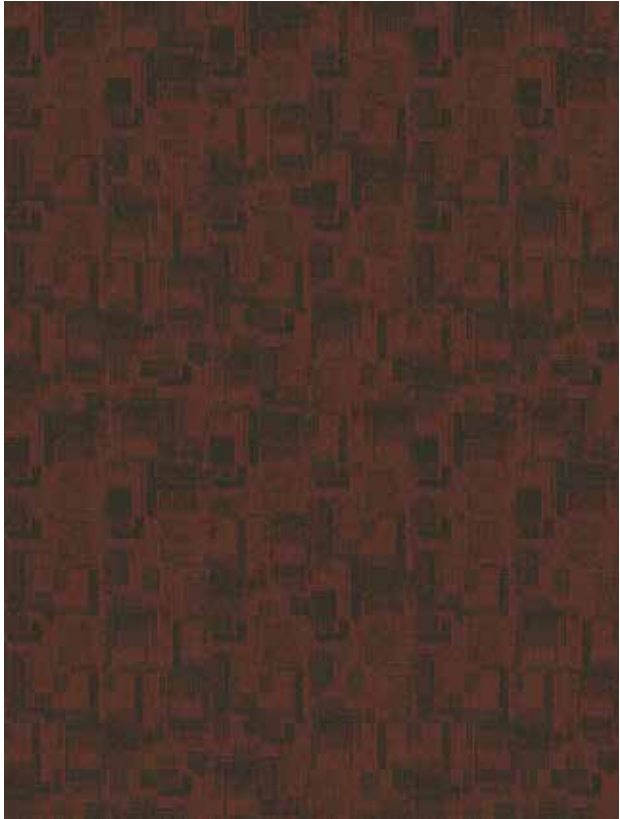
installation methods



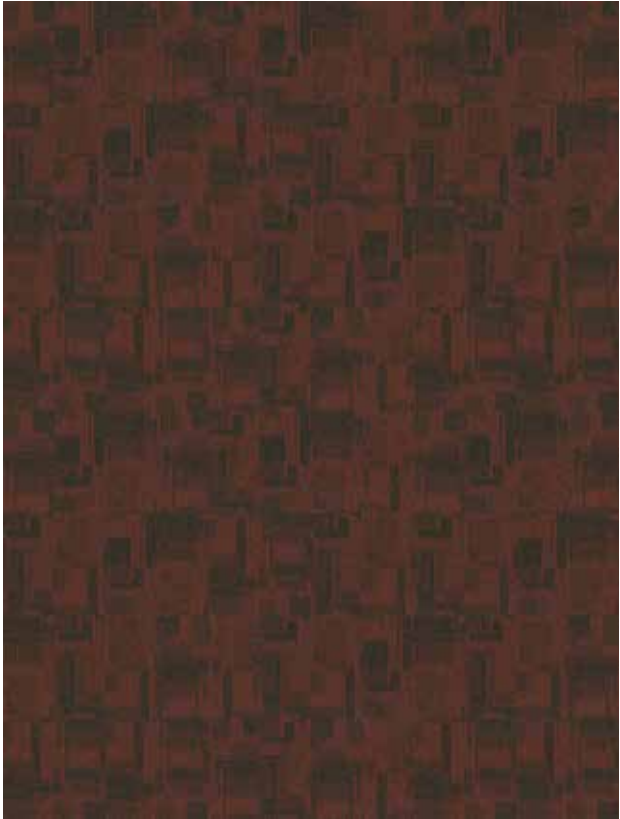
ashlar



brick



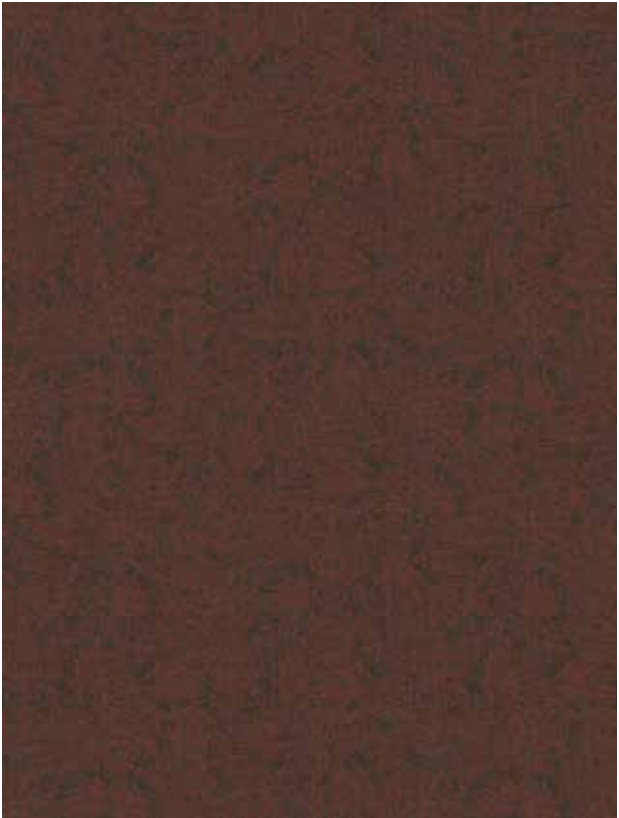
ashlar



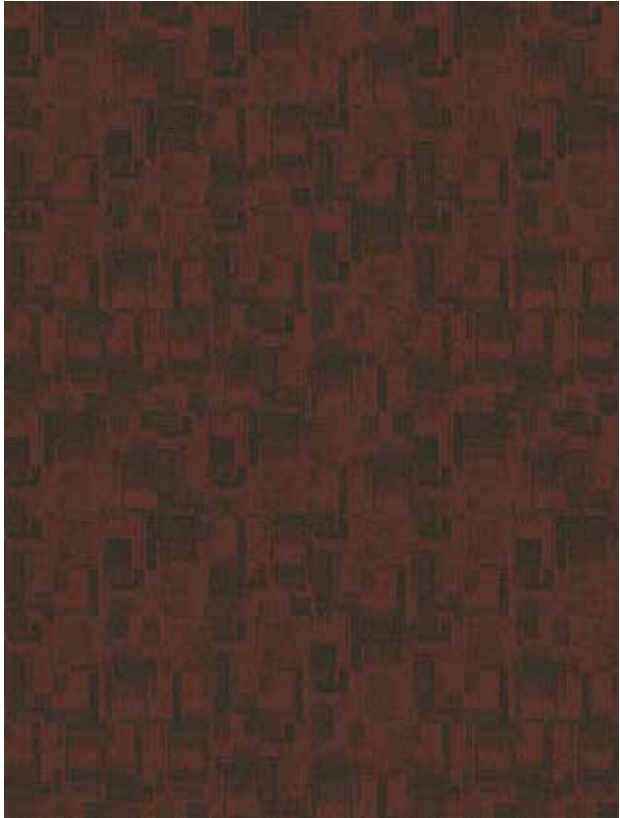
brick



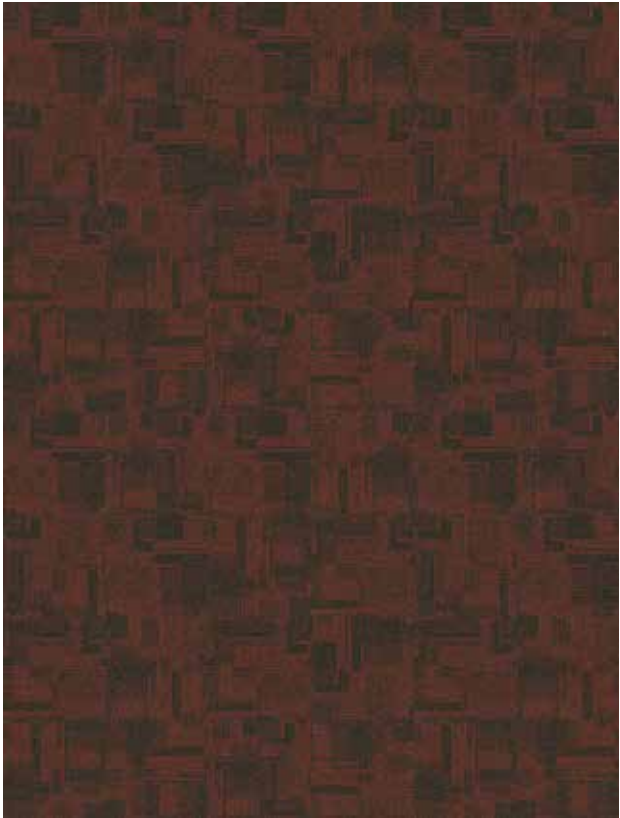
monolithic



quarter turn



monolithic



quarter turn

installation methods

product details

FIBER

Encore® SD Nylon (with recycled content)
Encore SD is specifically engineered to maximize appearance retention with exceptional color, performance, sustainability and practicality.

BACKINGS

Nexus® Modular

Nexus modular products can be installed in a variety of ways and are performance engineered to be visually appealing. In addition, they are designed to accommodate your long-term flooring budget.

- Manufactured in an ISO 14001 certified facility
- Contains pre-consumer recycled content and contributes to LEED
- Recyclable through the J+J Flooring Group's R4 Carpet Reclamation Program

ADHESIVES

Commercialon® Premium Modular Adhesive

A high strength acrylic latex-based carpet adhesive specifically formulated for bonding modular PVC backed carpet to the floor. This premium adhesive is for use with all Invision Nexus Modular Tile products. This adhesive is guaranteed for the life of the installation when used in accordance with the J+J Flooring Group Carpet Installation Handbook. Commercialon Premium Modular Adhesive meets the CRI Low-VOC Emission Criteria, CRI ID# PSA-425402. Commercialon Premium Modular Adhesive is non toxic, has ultra-low odor and is antimicrobial in the dry state.

OPTIONAL:

TileTabs - High Tack Adhesive Tabs

TECHNOLOGIES

ProTex® Soil Release

ProTex is a proprietary fluorochemical technology that is applied and bonded to the pile fiber to impede soiling and to improve cleanability. It is standard on all J+J Flooring Group products.

ProTex works similarly to the technology used in nonstick cookware by lowering the surface energy of the fibers which increases soil release properties. Very small soil particles cause carpet to appear dull. Thanks to ProTex, small soil particles are effectively removed by vacuuming or wet cleaning.

OPTIONAL:

ProSept® Antimicrobial

Sentir® Advanced Odor-Blocking Technology

corporate programs



Green Circle - Zero Waste to Landfill Operations Certification

We are proudly certified as a Zero Waste to Landfill manufacturer by GreenCircle Certified, LLC., a prominent third-party certifier of environmental claims. We are the first commercial flooring manufacturer in the United States to achieve this landfill free status and the first company in the industry to have its waste diversion efforts audited and verified by a recognized, third-party certifier.

To learn more about zero waste or our other initiatives see our sustainability progress report online at jjflooringgroup.com/sustainability



We're on it.

The J+J Flooring Group Premium Customer Experience.

Our Premium Customer Experience is a carefully crafted process by which we guarantee that our customers will get the products, services and the reliability they expect from us.

To learn more visit jjflooringgroup.com/about/cx

©2016 J&J Industries - This unique design is protected under the U.S. Copyright Act of 1976. Any unauthorized copying or duplication of this design constitutes copyright infringement in violation of federal law.

Due to the unique visual characteristics of modular carpets, pattern repeats and pattern run-off seams may appear more noticeable than in broadloom carpets. Such visual characteristics do not constitute a manufacturing defect, and as such, should be considered when selecting modular carpet and its installation.

These photographs are representations of the installation for this modular product. Your modular installation may look different than these photos depending upon individual tile placement, lighting, and overall space layout, including furnishings. Final tile placement and the resulting visual is thus the customer's, and not J+J Flooring Group's responsibility.



style	incognito 7069 modular	alter ego 7070 modular
construction	textured patterned loop	textured patterned loop
fiber type	Encore® SD nylon	Encore® SD nylon
dye method	solution dyed	solution dyed
ounce weight	29 oz/sy (983 grams/m ²)	29 oz/sy (983 grams/m ²)
gauge	1/12 (4.72 rows/cm)	1/12 (4.72 rows/cm)
backing	Nexus® modular	Nexus® modular
size	24" x 24" (61 cm x 61 cm)	24" x 24" (61 cm x 61 cm)
pattern repeat	n/a	n/a
total thickness (nominal average)	.28 inches (0.71 cm)	.28 inches (0.71 cm)
special technology	ProTex® fluorochemical	ProTex® fluorochemical
optional special technologies	ProSept® antimicrobial Sentir® advanced odor blocking treatment	ProSept® antimicrobial Sentir® advanced odor blocking treatment
physical testing	flooring radiant panel (class 1) pill test - (passes) smoke density (less than 450 flaming) static generation -(less than 3.5 kv) ADA compliance (compliant for accessible routes)	flooring radiant panel (class 1) pill test - (passes) smoke density (less than 450 flaming) static generation -(less than 3.5 kv) ADA compliance (compliant for accessible routes)
warranties	lifetime fiber performance for wear lifetime fiber performance for static lifetime stain removal lifetime colorfastness to light and atmospheric contaminants lifetime for tuft bind strength (edge ravel, yarn pulls, zippering) lifetime against delamination lifetime dimensional stability	lifetime fiber performance for wear lifetime fiber performance for static lifetime stain removal lifetime colorfastness to light and atmospheric contaminants lifetime for tuft bind strength (edge ravel, yarn pulls, zippering) lifetime against delamination lifetime dimensional stability

modular installation methods



ashlar



brick



monolithic



quarter turn



FLOORING GROUP

jjflooringgroup.com

P.O. Box 1287
Dalton, GA 30722
p 800 241 4586
f 706 275 4433

INVISION **kinetex**
