



# Impulse III Impromptu

MODULAR + BROADLOOM

QUICK SHIP OPTIONS



FLOORING

# Impulse III

## Impromptu



### INSPIRATION

Like a pointillist painting, Impulse III reflects a kaleidoscope of mixed color on its canvas. Dynamic pigmented yarns blend into each other creating a prism of spirited variation - the eye perceiving a range of color- scattered and dispersed. Impulse III offers seven colorways in 24"x24" modular and broadloom and is versatile enough to be used with a broad spectrum of interior finishes.

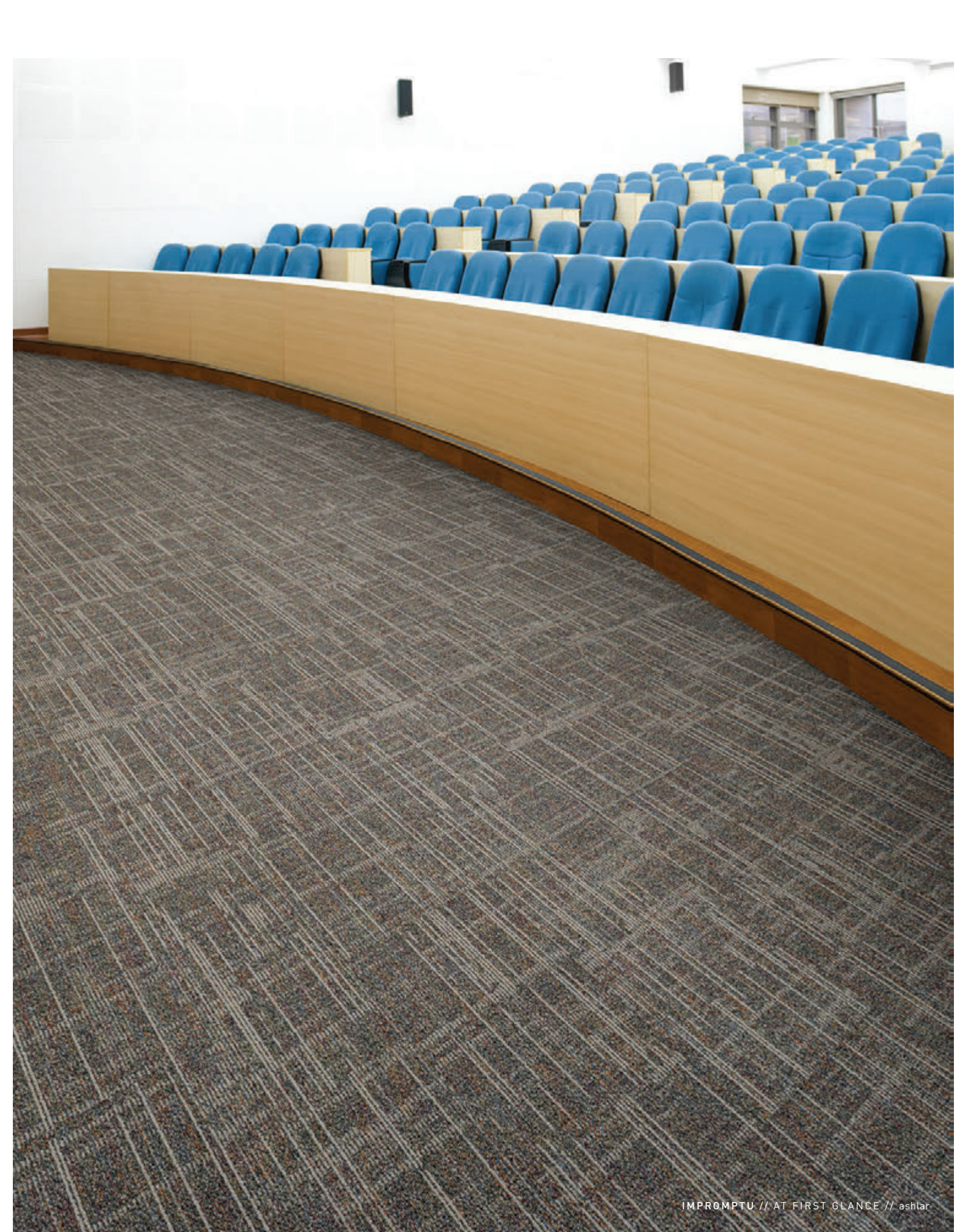
Taking a spontaneous cue from a proven classic, Impromptu thoughtfully layers a modern geometric atop the multi-colored base of Impulse III, bringing a little spatial edge to create a duo of products that allows for endless creative installation combinations. Available in 12"x48" planks, the eight care-free colorways of Impromptu pair well with Impulse III, or on its own to create fresh workplace environments.



(cover) IMPROMPTU // ON THE SPOT // ASHLAR // IMPULSE III // TELL A TALE // BROADLOOM



IMPULSE III // SPEAK YOUR MIND // monolithic



IMPROMPTU // AT FIRST GLANCE // ashlar



IMPROMPTU // IMPETUOUS // ashlar // IMPULSE III // TELL A TALE // monolithic  
(back cover) IMPROMPTU // IMPETUOUS // ashlar



## COORDINATES

Beyond the beauty of individual products, our flooring coordinates effortlessly across all of our product platforms - modular carpet tile, broadloom, LVT and Kinetex textile composite flooring. This offering enables you to blend a range of designs with tonal simplicity to create palettes that reflect the demands of each unique space.

1. **CUMULUS** // 7480 // 3486 Nimbus Color // Modular

2. **DOWNTOWN** // 1850 // 3153 Route 66 // Kinetex

3. **FRAMEWORK** // V5001 // 1014 Partition // LVT

4. **IMPROMPTU** // 7071 // 2390 On The Spot // Modular

5. **JACK** // 7914 // 3420 Blazer // Modular

6. **AGAINST THE GRAIN** // 1840 // 2824 Milo // Kinetex

7. **IMPULSE III** // 2433 + 7246 // 1811 Tell a Tale // Broadloom + Modular

8. **ZEPHYR** // 7478 // 3364 Trade // Modular

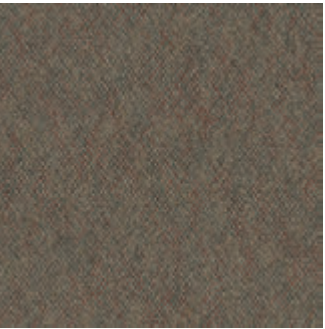
9. **WELL VERSED II** // 7072 // 2025 Whitman // Modular

10. **IMPROMPTU** // 7071 // 2389 Impetous // Modular

11. **LEGEND** // V5009 + V5010 // 1057 Tale // LVT

# Impulse III

24"x 24" MODULAR AND BROADLOOM



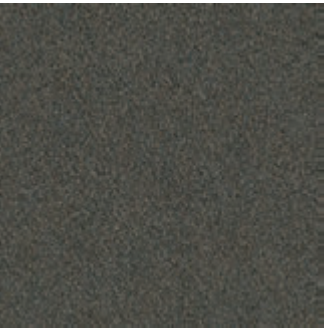
COLOR 8403  
take a dare



QUICK SHIP -  
COLOR 1807  
jump right in



QUICK SHIP  
COLOR 8400  
take a trip



QUICK SHIP  
COLOR 1808  
make a move



QUICK SHIP  
COLOR 7412  
speak your mind



COLOR 3408  
call an old flame



QUICK SHIP  
COLOR 1811  
tell a tale

# Impromptu

12"x 48" MODULAR



COLOR 2377  
offhand



QUICK SHIP  
COLOR 2380  
unscripted



QUICK SHIP  
COLOR 2385  
free spirit



COLOR 2383  
on a whim



QUICK SHIP  
COLOR 2384  
at first glance



COLOR 2388  
out of the blue



QUICK SHIP  
COLOR 2389  
impetuous



QUICK SHIP  
COLOR 2390  
on the spot

FIBER

**Encore® SD Nylon** (with recycled content) is specifically engineered to maximize appearance retention with exceptional color, performance, sustainability and practicality.

**Encore® Nylon with ColorLoc® Plus** is manufactured to offer exceptional color, performance and appearance retention. Carpet using Encore nylon with ColorLoc Plus - our patented stain resistant technology - is engineered to resist permanent staining and is backed by Lifetime Performance Warranties for stain resistance, colorfastness, color transfer, water bleed, bleach resistance and wear.

BACKINGS

**Nexus® Modular** products can be installed in a variety of ways and are performance engineered to be visually appealing. In addition, they are designed to accommodate your long-term flooring budget.

- » Manufactured in an ISO 14001 certified facility
- » Contains pre-consumer recycled content and contributes to LEED
- » Recyclable through the J+J Flooring’s R4 Carpet Reclamation Program

**PremierBac® Plus** is standard on broadloom products and provides superior construction to ensure solid dimensional stability for broadloom carpets.

- » Stretch-in or glue-down installation
- » Manufactured in an ISO 14001 certified facility
- » Contains pre-consumer recycled content and contributes to LEED
- » Recyclable through the J+J Flooring’s R4 Carpet Reclamation Program

MOISTURE

Are high levels of moisture in your concrete slab causing issues with your project’s floor covering? We can help.

- » Nexus® Modular Carpet with TileTabs – 99% RH
- » Cost-efficient
- » Long-term performance
- » Straightforward, easy-to-understand warranty
- » Requires no special floor preparation

ADHESIVE

**Commercialon® Premium Carpet Adhesive** is formulated for the most demanding interior carpet installations. It forms a powerful bond with stiff and heavy backed commercial carpets directly over approved substrates. It is quick setting, features antimicrobial protection and can be removed easily. This solvent free adhesive is also low in odor, meeting the low VOC emission criteria of the CRI Green Label Plus Indoor Air Quality. Commercialon Premium Adhesive is for use with broadloom PremierBac Plus, TitanBac® Plus and Endure Plus backings systems.

**Commercialon® Premium Modular Adhesive**  
A high strength acrylic latex-based carpet adhesive specifically formulated for bonding modular PVC backed carpet to the floor. This premium adhesive is for use with all Nexus Modular Tile products. This adhesive is guaranteed for the lifetime of the installation when used in accordance with the J+J Flooring installation instructions. Commercialon® Premium Modular Adhesive meets the CRI Low-VOC Emission Criteria, CRI ID# PSA-425402. Commercialon® Premium Modular Adhesive is non toxic, has ultra-low odor and is antimicrobial in the dry state.

OPTIONAL:  
**Commercialon® High Moisture Adhesive TileTabs** - High Tack Adhesive Tabs (modular only)

TECHNOLOGIES

**ProTex® Anti-Soil Treatment**  
ProTex is a proprietary anti-soil treatment technology that is applied and bonded to the pile fiber to impede soiling and to improve cleanability. It is standard on all J+J Flooring products.

OPTIONAL:  
**ProSept® Antimicrobial**  
**Sentir® Advanced Odor-Blocking Technology**

STYLE	impulse III 7246 modular	impulse III 2433 broadloom	impromptu 7071 modular
CONSTRUCTION	level loop	level loop	textured patterned loop
FIBER TYPE	Encore® SD Nylon and Encore® Nylon with ColorLoc Plus	Encore® SD Nylon and Encore® Nylon with ColorLoc Plus	Encore® SD Nylon and Encore® Nylon with ColorLoc Plus
DYE METHOD	solution dyed / yarn dyed	solution dyed / yarn dyed	solution dyed / yarn dyed
OUNCE WEIGHT	20.0 oz./sy (678 grams/m²)	20.0 oz./sy (678 grams/m²)	22.0 oz./sy (746 grams/m²)
GAUGE	1/10 (3.94 rows/cm)	1/10 (3.94 rows/cm)	1/12 (4.72 rows/cm)
BACKING	Nexus® Modular	PremierBac® Plus	Nexus® Modular
SIZE	24” x 24” (61.0 cm X 61.0 cm)	12 feet (3.66 M)	12” x 48” (31.0 cm x 122.0 cm)
PATTERN REPEAT	n/a	n/a	n/a
TOTAL THICKNESS (nominal average)	0.25 inches (0.635 cm)	0.25 inches (0.635 cm)	0.219 inches (0.556 cm)
SPECIAL TECHNOLOGY	ProTex® anti-soil treatment	ProTex® anti-soil treatment	ProTex® anti-soil treatment
OPTIONAL SPECIAL TECHNOLOGIES	ProSept® antimicrobial Sentir® advanced odor blocking treatment	ProSept® antimicrobial Sentir® advanced odor blocking treatment	ProSept® antimicrobial Sentir® advanced odor blocking treatment
PHYSICAL TESTING	flooring radiant panel (class 1) pill test – (passes) smoke density (less than 450 flaming) static generation -(less than 3.5 kv) ADA compliance (compliant for accessible routes)	flooring radiant panel (class 1) pill test – (passes) smoke density (less than 450 flaming) static generation -(less than 3.5 kv) ADA compliance (compliant for accessible routes)	flooring radiant panel (class 1) pill test – (passes) smoke density (less than 450 flaming) static generation -(less than 3.5 kv) ADA compliance (compliant for accessible routes)
FIBER WARRANTY	lifetime fiber performance for wear lifetime fiber performance for static lifetime stain removal lifetime colorfastness to light and atmospheric contaminants	lifetime fiber performance for wear lifetime fiber performance for static lifetime stain removal lifetime colorfastness to light and atmospheric contaminants	lifetime fiber performance for wear lifetime fiber performance for static lifetime stain removal lifetime colorfastness to light and atmospheric contaminants
BACKING WARRANTY	lifetime for tuft bind strength (edge ravel, yarn pulls, zippering) lifetime against delamination lifetime dimensional stability	10 year for tuft bind strength (edge ravel, yarn pulls, zippering) 10 year against delamination	lifetime for tuft bind strength (edge ravel, yarn pulls, zippering) lifetime against delamination lifetime dimensional stability

MODULAR INSTALLATION METHODS

  
ashlar

  
brick

  
monolithic

  
quarter turn

  
ashlar

  
basketweave

  
herringbone

  
parquet

  
monolithic

©2023 J+J Flooring Group, LLC - This unique design is protected under the U.S. Copyright Act of 1976. Any unauthorized copying or duplication of this design constitutes copyright infringement in violation of federal law. Due to the unique visual characteristics of modular carpets, pattern repeats and pattern run-off seams may appear more noticeable than in broadloom carpets. Such visual characteristics do not constitute a manufacturing defect, and as such, should be considered when selecting modular carpet and its installation.

These photographs are representations of the installation for this modular product. Your modular installation may look different than these photos depending upon individual tile placement, lighting, and overall space layout, including furnishings. Final tile placement and the resulting visual is thus the customer’s, and not J+J Flooring’s responsibility.

MODULAR + BROADLOOM

QUICK SHIP OPTIONS



P.O. BOX 2207

DALTON, GA 30722

P 800 241 4586

F 706 275 4433

JJFLOORING.COM

MX6423M05

carpet | lvt | kinetex



FLOORING

A DIVISION OF ENGINEERED FLOORS