



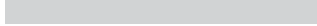




# Flooring Catalog



# Table of Contents

<b>ABOUT US</b>		2
<b>ORGANIC SMALL</b>		4
<b>ORGANIC MEDIUM</b>		12
<b>ORGANIC LARGE</b>		20
<b>ORGANIC RANDOM</b>		32
<b>ORGANIC ROLLS</b>		44
<b>GEOMETRIC SMALL</b>		50
<b>GEOMETRIC MEDIUM</b>		58
<b>GEOMETRIC LARGE</b>		66
<b>GEOMETRIC RANDOM</b>		74
<b>GEOMETRIC ROLLS</b>		84
<b>COORDINATE</b>		86
<b>ADHESIVES</b>		92
<b>PRICING</b>		96



## J+J FLOORING

In 1985, the flooring company bearing the name of brothers Robert and Bud Shaw became the first carpet manufacturer to break into the Fortune 500. Mr. Shaw retired from that company in 2006, but in 2009 he decided to come out of retirement and founded Engineered Floors, LLC. Instead of using his past success as a model for growth, Mr. Shaw knew that thriving flooring companies only get that way by doing what others haven't done or what they have deemed impossible. He began fresh with Engineered Floors, building from the ground up under the company promise of "Innovation Reinvented." Mr. Shaw instilled a drive to identify and implement new technologies, streamline production, integrate operations under one roof, and guided the development of Engineered Floors' product and market strategies. Today, under Mr. Shaw's leadership, Engineered Floors has quickly grown to be the third largest carpet manufacturer in the United States and the fastest-growing flooring company in the world.

**"ENGINEERED FLOORS HAS QUICKLY GROWN TO BE THE THIRD LARGEST CARPET MANUFACTURER IN THE UNITED STATES AND THE FASTEST-GROWING FLOORING COMPANY IN THE WORLD."**

J+J Flooring opened its doors in 1957 and was acquired by Engineered Floors in 2016. As a commercial flooring division of Engineered Floors, we are poised to continue delivering on our goal to shape inspiring commercial spaces through resources, technology and product selections. With modular carpet, broadloom, LVT (luxury vinyl tile) and Kinetex, a textile composite flooring – we provide a range of product solutions to meet the needs of our customers.



FRACTURED PLAID | 7587 | 24" X 24" MODULAR



COLOR 2871  
fleck



COLOR 2872  
ticking



COLOR 2873  
calico



COLOR 2874  
mills



COLOR 2875  
eyelet



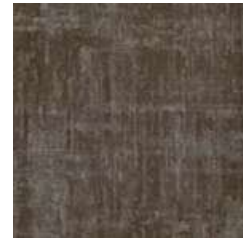
COLOR 2876  
gauze



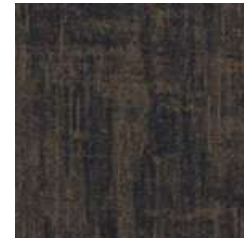
COLOR 2877  
felt



COLOR 2878  
cloth



COLOR 2879  
percale



COLOR 2880  
armure



COLOR 2881  
brocade



COLOR 2882  
chintz



COLOR 2883  
corded



COLOR 2884  
plush

**Construction** Textured Patterned Loop

**Pile Density** 14308 oz./y<sup>3</sup>  
[530.55 kg/m<sup>3</sup>]

**Standard Adhesive** Commercialon Premium Modular Adhesive

**Backing** Nexus® Modular

**Pattern Repeat** N/A

**Optional Adhesive** TileTabs

**Dye Method** Solution Dyed

**Gauge** 1/10 [3.94 rows/cm]

**Standard Warranties** Encore SD Ultima Lifetime Fiber  
Nexus Modular Lifetime  
Commercialon Adhesive for  
Modular Carpet & LVT Lifetime

**Fiber Type** Encore® SD Ultima®  
(with recycled content)

**Stitches Per Inch** 10 stitches/in  
[3.94 stitches/cm]

**Optional Warranties** Nexus Cushion Modular Lifetime  
Tile Tabs  
Nexus Cushion Adhesive

**Face Weight** 32 oz./sy [1085 grams/  
m<sup>2</sup>]

**Standard Size** 24" x 24" approx.  
[60.96cm x 60.96cm]

MODULAR  
INSTALLATION  
METHODS



ashlar



brick

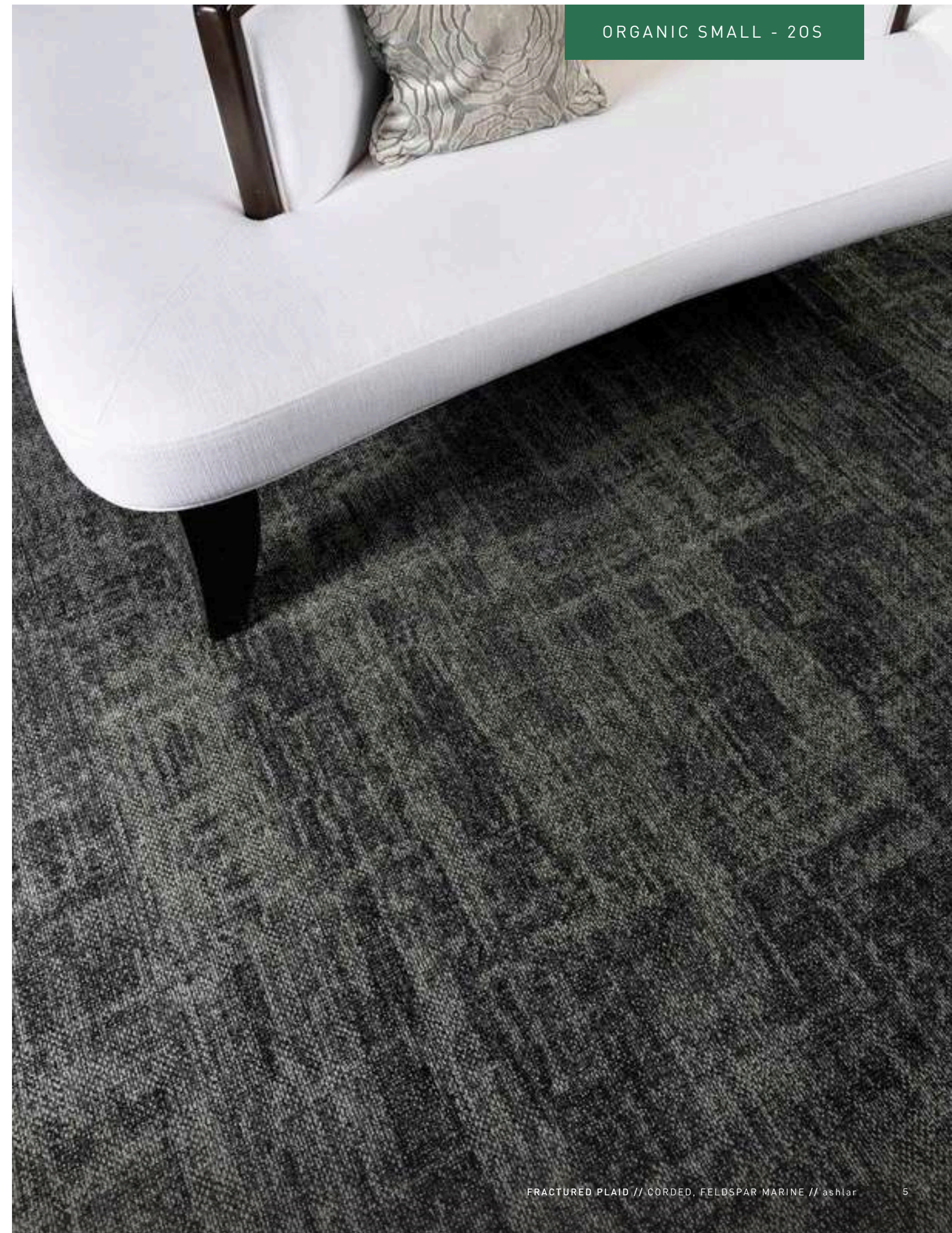


monolithic



quarter turn

CLASSIFICATION:  
SEVERE



OBSIDIAN | 7718 | 24" X 24" MODULAR



COLOR 2959  
limestone



COLOR 2960  
feldspar



COLOR 2961  
soapstone



COLOR 2965  
quartz



COLOR 2966  
marble



COLOR 2967  
shale



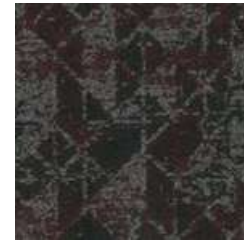
COLOR 2969  
sandstone



COLOR 3278  
limestone moss



COLOR 3279  
feldspar marine



COLOR 3280  
soapstone maroon



COLOR 3281  
sandstone copper



COLOR 3282  
quartz jade



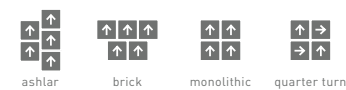
COLOR 3283  
marble gold



COLOR 3284  
shale ice

<b>Construction</b>	Textured Patterned Loop	<b>Pile Density</b>	14308 oz./y <sup>3</sup> [530.55 kg/m <sup>3</sup> ]	<b>Standard Adhesive</b>	Commercial Premium Modular Adhesive
<b>Backing</b>	Nexus® Modular	<b>Pattern</b>	N/A	<b>Optional Adhesive</b>	TileTabs
<b>Dye Method</b>	Solution Dyed	<b>Repeat Gauge</b>	1/10 [3.94 rows/cm]	<b>Standard Warranties</b>	Encore SD Ultima Lifetime Fiber Nexus Modular Lifetime Commercial Adhesive for Modular Carpet & LVT Lifetime
<b>Fiber Type</b>	Encore® SD Ultima® [with recycled content]	<b>Stitches Per Inch</b>	10 stitches/in [3.94 stitches/cm]	<b>Optional Warranties</b>	Nexus Cushion Modular Lifetime Tile Tabs Nexus Cushion Adhesive
<b>Face Weight</b>	32 oz./sy [1085 grams/ m <sup>2</sup> ]	<b>Standard Size</b>	24" x 24" approx. [60.96cm x 60.96cm]		

MODULAR  
INSTALLATION  
METHODS



CLASSIFICATION:  
SEVERE



ADAPT | 7602 | 18" X 36" MODULAR



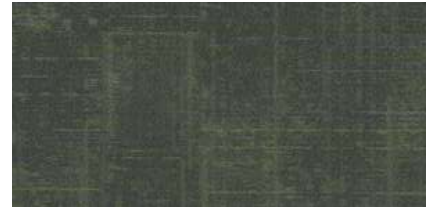
**COLOR 3266**  
cool oasis



**COLOR 3267**  
citrus oasis



**COLOR 3268**  
crystal oasis



**COLOR 3269**  
lime oasis



**COLOR 3270**  
warm beam



**COLOR 3271**  
gold beam



**COLOR 3272**  
azure beam



**COLOR 3273**  
light beam



**COLOR 3274**  
carbon path



**COLOR 3275**  
royal path



**COLOR 3276**  
plum path



**COLOR 3277**  
brick path

<b>Construction</b>	Patterned Loop
<b>Backing</b>	Nexus® Modular
<b>Dye Method</b>	Solution Dyed
<b>Fiber Type</b>	Encore® SD Ultima® (with recycled content)
<b>Face Weight</b>	21oz/sy [712 grams/m2]

<b>Pile Density</b>	9351 oz/y3 [346.74 kg/m3]
<b>Pattern Repeat</b>	N/A
<b>Gauge</b>	1/12 (4.72 rows/cm)
<b>Stitches Per Inch</b>	10 stitches/in [3.94 stitches/cm]
<b>Standard Size</b>	18" x 36" approx. [45.72cm x 91.44cm]

<b>Standard Adhesive</b>	Commercialon Premium Modular Adhesive
<b>Optional Adhesive</b>	TileTabs
<b>Standard Warranties</b>	Encore SD Ultima Lifetime Fiber Nexus Modular Lifetime Commercialon Adhesive for Modular Carpet & LVT Lifetime
<b>Optional Warranties</b>	Nexus Cushion Modular Lifetime

MODULAR  
INSTALLATION  
METHODS



parquet



basketweave



ashlar

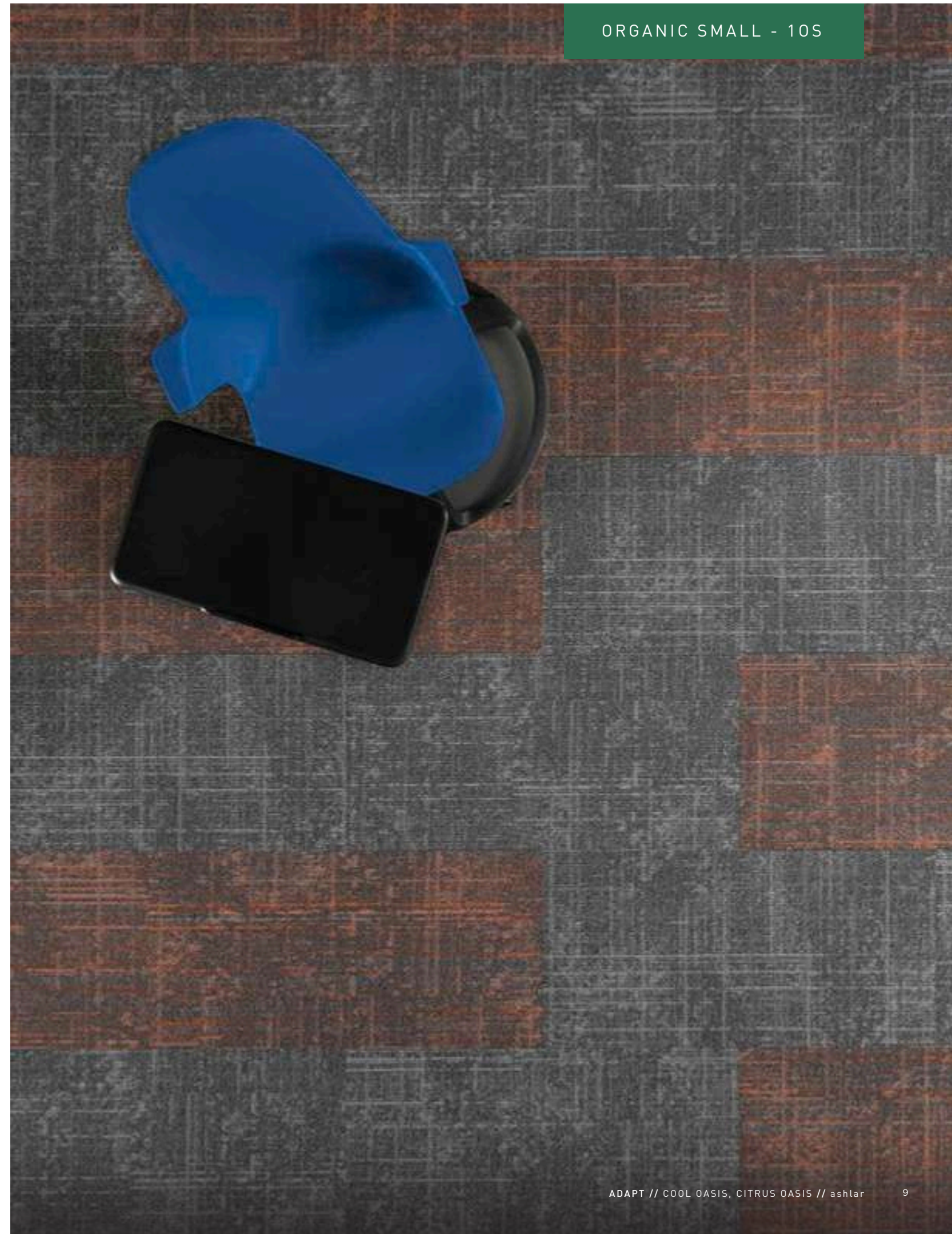


herringbone

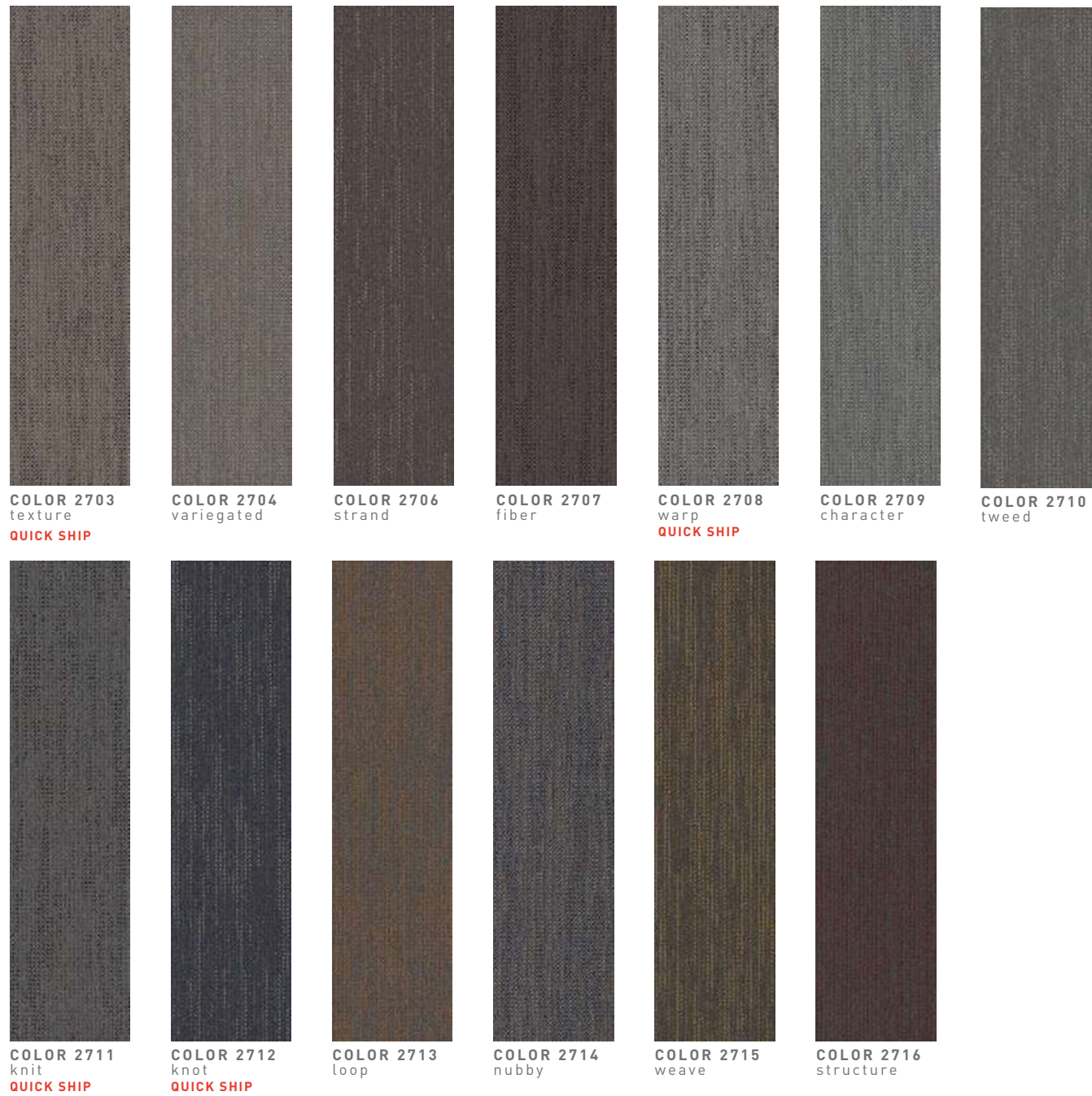


brick

CLASSIFICATION:  
HEAVY



BOUCLÉ | 7081 | 12" X 48" MODULAR



<b>Construction</b>	Textured Loop	<b>Pile Density</b>	7451 oz./y3 (276.29 kg/m3)	<b>Standard Adhesive</b>	Commercial Premium Modular Adhesive
<b>Backing</b>	Nexus® Modular	<b>Pattern Repeat</b>	N/A	<b>Optional Adhesive</b>	TileTabs
<b>Dye Method</b>	Solution Dyed	<b>Gauge</b>	1/10 (3.94 rows/cm)	<b>Standard Warranties</b>	Encore SD Ultima Lifetime Fiber Nexus Modular Lifetime Commercial Adhesive for Modular Carpet & LVT Lifetime
<b>Fiber Type</b>	Encore® SD Ultima® (with recycled content)	<b>Stitches Per Inch</b>	9 stitches/in (3.54 stitches/cm)	<b>Optional Warranties</b>	Nexus Cushion Modular Lifetime Tile Tabs Nexus Cushion Adhesive
<b>Face Weight</b>	25 oz./sy (848 grams/ m2l)	<b>Standard Size</b>	12" x 48" approx. (30.48cm x 121.92cm)		

MODULAR  
INSTALLATION  
METHODS



CLASSIFICATION:  
SEVERE



INTRINSIC | 7096 | 24" X 24" MODULAR



COLOR 2717  
authentic



COLOR 2718  
central



COLOR 2719  
2719



COLOR 2720  
fundamental



COLOR 2722  
innate



COLOR 2723  
key



COLOR 2726  
inherent



COLOR 2728  
true



COLOR 2729  
vital

<b>Construction</b>	Textured Patterned Loop	<b>Pile Density</b>	5925 oz./y3 [219.70 kg/m3]	<b>Standard Adhesive</b>	Commercialon Premium Modular Adhesive
<b>Backing</b>	Nexus® Modular	<b>Pattern Repeat</b>	N/A	<b>Optional Adhesive</b>	TileTabs
<b>Dye Method</b>	Solution Dyed	<b>Gauge</b>	1/12 (4.72 rows/cm)	<b>Standard Warranties</b>	Encore SD Ultima Lifetime Fiber Nexus Modular Lifetime Commercialon Adhesive for Modular Carpet & LVT Lifetime
<b>Fiber Type</b>	Encore® SD Ultima® (with recycled content)	<b>Stitches Per Inch</b>	9.3 stitches/in (3.66 stitches/cm)	<b>Optional Warranties</b>	Nexus Cushion Modular Lifetime Tile Tabs Nexus Cushion Adhesive
<b>Face Weight</b>	16 oz./sy [543 grams/m2]	<b>Standard Size</b>	24" x 24" approx. (60.96cm x 60.96cm)		

MODULAR  
INSTALLATION  
METHODS



ashlar



brick



monolithic

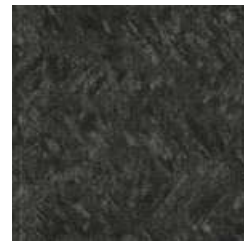


quarter turn

CLASSIFICATION:  
SEVERE



TWILL WEAVE | 7586 | 24" X 24" MODULAR



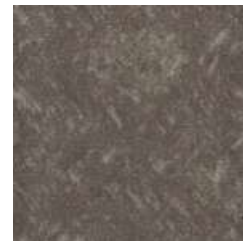
COLOR 2871  
fleck



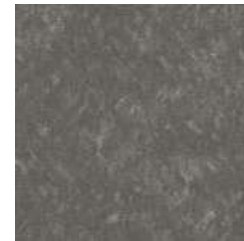
COLOR 2872  
ticking



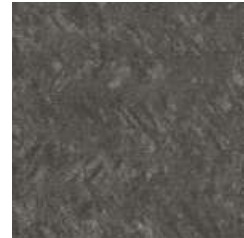
COLOR 2873  
calico



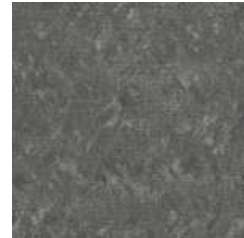
COLOR 2874  
mills



COLOR 2875  
eyelet



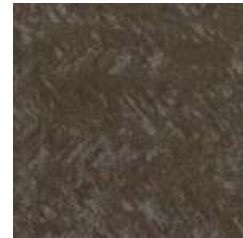
COLOR 2876  
gauze



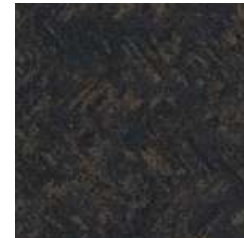
COLOR 2877  
felt



COLOR 2878  
cloth



COLOR 2879  
percale



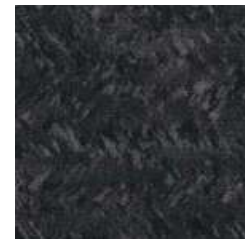
COLOR 2880  
armure



COLOR 2881  
brocade



COLOR 2882  
chintz



COLOR 2883  
corded



COLOR 2884  
plush

**Construction** Textured Patterned Loop

**Backing** Nexus® Modular

**Dye Method** Solution Dyed

**Fiber Type** Encore® SD Ultima®  
(with recycled content)

**Face Weight** 32 oz./sy [1085 grams/  
m2]

**Pile Density** 14308 oz./y3  
[530.55 kg/m3]

**Pattern Repeat** N/A

**Gauge** 1/10 [3.94 rows/cm]

**Stitches Per Inch** 10 stitches/in  
[3.94 stitches/cm]

**Standard Size** 24" x 24" approx.  
[60.96cm x 60.96cm]

**Standard Adhesive** Commercial Premium Modular  
Adhesive

**Optional Adhesive** TileTabs

**Standard Warranties** Encore SD Ultima Lifetime Fiber  
Nexus Modular Lifetime  
Commercial Adhesive for  
Modular Carpet & LVT Lifetime

**Optional Warranties** Nexus Cushion Modular Lifetime  
Tile Tabs  
Nexus Cushion Adhesive

MODULAR  
INSTALLATION  
METHODS



ashlar



brick



monolithic



quarter turn

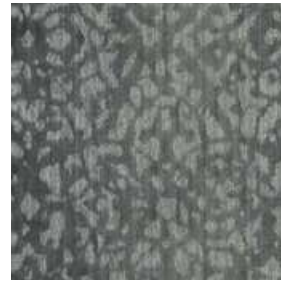
CLASSIFICATION:  
SEVERE



SERENE | 7592 | 24" X 24" MODULAR



**COLOR 3228**  
sky



**COLOR 3229**  
soft grey



**COLOR 3230**  
pine



**COLOR 3231**  
teal



**COLOR 3232**  
coffee



**COLOR 3233**  
terra



**COLOR 3234**  
sailor



**COLOR 3235**  
meadowlark



**COLOR 3236**  
sandstone



**COLOR 3237**  
smoke

<b>Construction</b>	Patterned Loop
<b>Backing</b>	Nexus® Modular
<b>Dye Method</b>	Solution/Yarn Dyed
<b>Fiber Type</b>	100% Encore® SD Ultima® nylon
<b>Face Weight</b>	27 oz./sy (915 grams/m2)

<b>Pile Density</b>	8040 oz./y3 (298.13 kg/m3)
<b>Pattern Repeat</b>	N/A
<b>Gauge</b>	1/10 [3.94 rows/cm]
<b>Stitches Per Inch</b>	12.7 stitches/in (5.00 stitches/cm)
<b>Standard Size</b>	24" x 24" approx. [60.96cm x 60.96cm]

<b>Standard Adhesive</b>	Commercialon Premium Modular Adhesive
<b>Optional Adhesive</b>	Tile Tabs
<b>Standard Warranties</b>	Encore BCF (with ColorLoc Plus) Lifetime Nexus Modular Lifetime Commercialon Adhesive for Modular Carpet & LVT Lifetime
<b>Optional Warranties</b>	Nexus Cushion Modular Lifetime Tile Tabs Nexus Cushion Adhesive

MODULAR  
INSTALLATION  
METHODS



ashlar



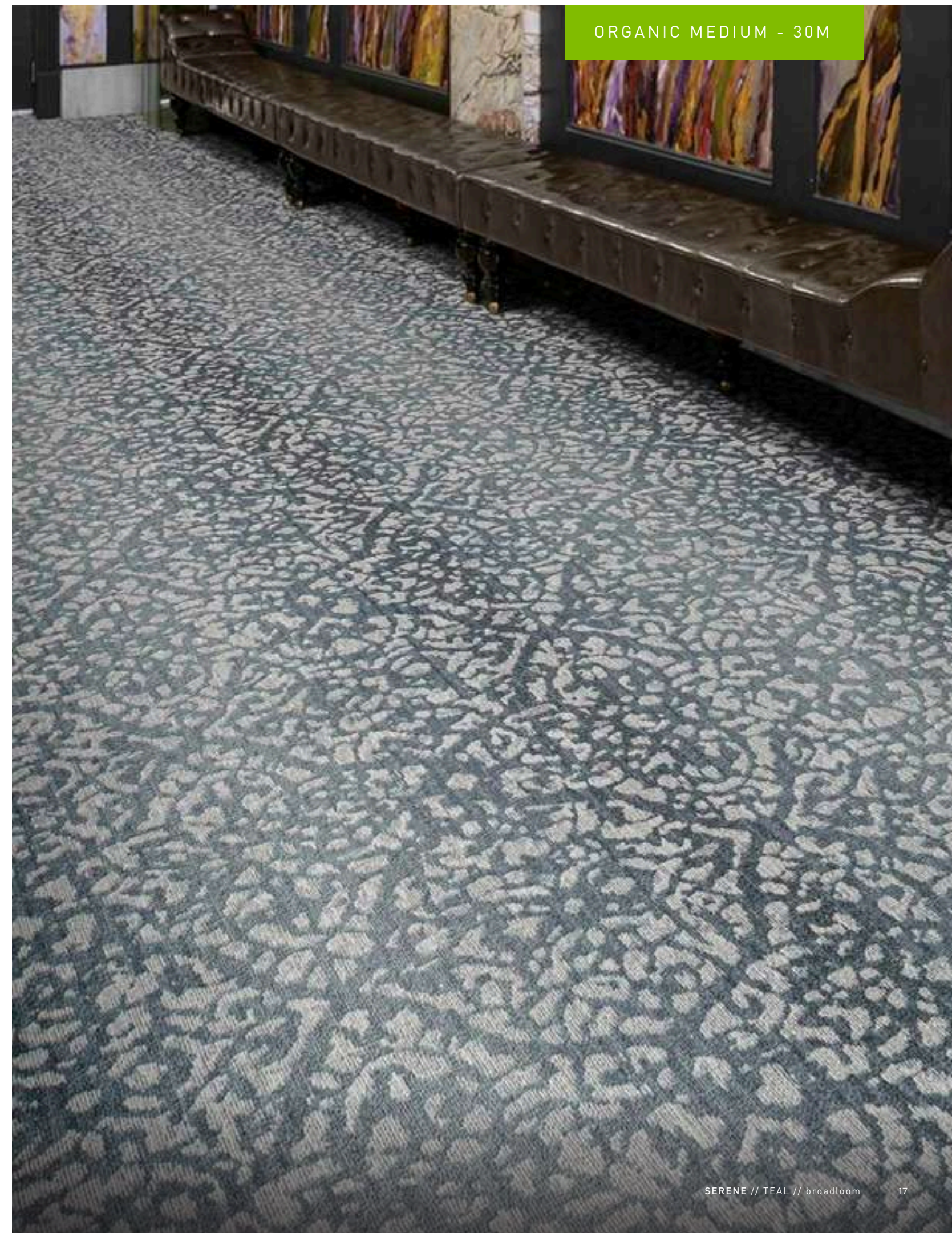
brick



monolithic

CLASSIFICATION:  
SEVERE

ORGANIC MEDIUM - 30M



ETCHED | 7030 | 18" X 36" MODULAR



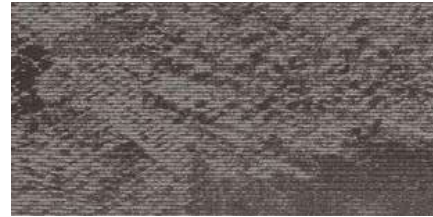
**COLOR 1983**  
impression



**COLOR 1984**  
engrave



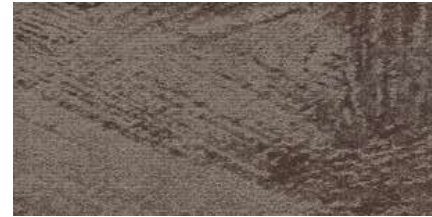
**COLOR 1985**  
inscribe



**COLOR 1986**  
dissolve



**COLOR 1987**  
mordant



**COLOR 1988**  
stipple



**COLOR 1989**  
oxidize



**COLOR 1990**  
emulsion



**COLOR 1991**  
erode



**COLOR 1992**  
chisel



**COLOR 1993**  
ingrain



**COLOR 1994**  
stamp

<b>Construction</b>	Patterned Loop	<b>Pile Density</b>	7391 oz./y3 (274.06 kg/m3)	<b>Standard Adhesive</b>	Commercial Premium Modular Adhesive
<b>Backing</b>	Nexus® Modular	<b>Pattern Repeat</b>	N/A	<b>Optional Adhesive</b>	TileTabs
<b>Dye Method</b>	Solution Dyed	<b>Gauge</b>	1/12 (4.72 rows/cm)	<b>Standard Warranties</b>	Encore SD Ultima Lifetime Fiber Nexus Modular Lifetime Commercial Adhesive for Modular Carpet & LVT Lifetime
<b>Fiber Type</b>	Encore® SD Ultima® (with recycled content)	<b>Stitches Per Inch</b>	10 stitches/in (3.94 stitches/cm)	<b>Optional Warranties</b>	Nexus Cushion Modular Lifetime Tile Tabs Nexus Cushion Adhesive
<b>Face Weight</b>	20 oz./sy (678 grams/m2)	<b>Standard Size</b>	18" x 36" approx. (45.72cm x 91.44cm)		

MODULAR  
INSTALLATION  
METHODS



CLASSIFICATION:  
HEAVY



REVEAL | 7685 | 24" X 24" MODULAR



**COLOR 2753**  
composite



**COLOR 2754**  
Aspect



**COLOR 2755**  
component



**COLOR 2627**  
weathered



**COLOR 2756**  
facet



**COLOR 2629**  
beam



**COLOR 2630**  
tailor



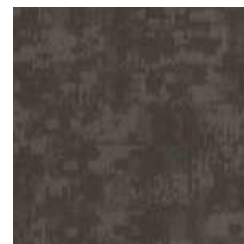
**COLOR 2757**  
castor



**COLOR 2632**  
heritage



**COLOR 2758**  
draftsman



**COLOR 2634**  
hutch



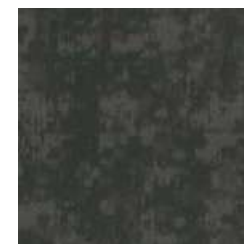
**COLOR 2635**  
raw



**COLOR 2636**  
pipes



**COLOR 2638**  
steel



**COLOR 2639**  
galvanized



**COLOR 2640**  
hardware

<b>Construction</b>	Patterned Loop	<b>Pile Density</b>	6701 oz./y3 (248.48 kg/m3l)	<b>Standard Adhesive</b>	Commercial Premium Modular Adhesive
<b>Backing</b>	Nexus® Modular	<b>Pattern Repeat</b>	N/A	<b>Optional Adhesive</b>	TileTabs
<b>Dye Method</b>	Solution Dyed	<b>Gauge</b>	1/12 (4.72 rows/cm)	<b>Standard Warranties</b>	Encore SD Ultima Lifetime Fiber Nexus Modular Lifetime Commercialon Adhesive for Modular Carpet & LVT Lifetime
<b>Fiber Type</b>	Encore® SD Ultima® (with recycled content)	<b>Standard Size</b>	24" x 24" approx. (60.96cm x 60.96cm)	<b>Optional Warranties</b>	Nexus Cushion Modular Lifetime Tile Tabs Nexus Cushion Adhesive
<b>Face Weight</b>	19 oz./sy (644 grams/m2)				

MODULAR  
INSTALLATION  
METHODS



CLASSIFICATION:  
SEVERE



HERBALIST | 7571 | 24" X 24" MODULAR



COLOR 3228  
sky



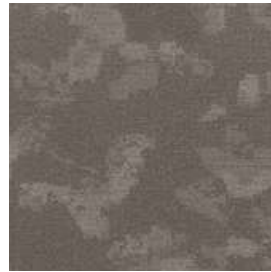
COLOR 3230  
pine



COLOR 3232  
coffee



COLOR 3234  
sailor



COLOR 3236  
sandstone



COLOR 3229  
soft grey



COLOR 3231  
teal



COLOR 3233  
terra



COLOR 3235  
meadowlark



COLOR 3237  
smoke

<b>Construction</b>	Patterned Loop
<b>Backing</b>	Nexus® Modular
<b>Dye Method</b>	Solution/Yarn Dyed
<b>Fiber Type</b>	Encore® RE Nylon [recycled content!]
<b>Face Weight</b>	20 oz./sy [678 grams/m2]

<b>Pile Density</b>	8040 oz./y3 [298.13 kg/m3]
<b>Pattern Repeat</b>	N/A
<b>Gauge</b>	1/10 [3.94 rows/cm]
<b>Stitches Per Inch</b>	12.7 stitches/in [5.00 stitches/cm]
<b>Standard Size</b>	24" x 24" approx. [60.96cm x 60.96cm]

<b>Standard Adhesive</b>	Commercialon Premium Modular Adhesive
<b>Optional Adhesive</b>	Tile Tabs
<b>Standard Warranties</b>	Encore BCF (with ColorLoc Plus) Lifetime Nexus Modular Lifetime Commercialon Adhesive for Modular Carpet & LVT Lifetime
<b>Optional Warranties</b>	Nexus Cushion Modular Lifetime Tile Tabs Nexus Cushion Adhesive

MODULAR  
INSTALLATION  
METHODS



brick



quarter turn

CLASSIFICATION:  
SEVERE

ORGANIC LARGE - 20L



TRANQUIL | 7593 | 24" X 24" MODULAR



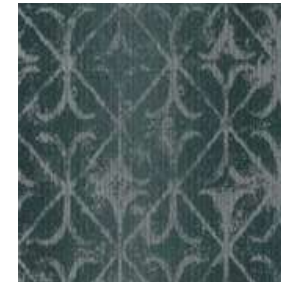
COLOR 3228  
sky



COLOR 3229  
soft grey



COLOR 3230  
pine



COLOR 3231  
teal



COLOR 3232  
coffee



COLOR 3233  
terra



COLOR 3234  
sailor



COLOR 3235  
meadowlark



COLOR 3236  
sandstone



COLOR 3237  
smoke

<b>Construction</b>	Patterned Loop
<b>Backing</b>	Nexus® Modular
<b>Dye Method</b>	Solution/Yarn Dyed
<b>Fiber Type</b>	100% Encore® SD Ultima® nylon
<b>Face Weight</b>	27 oz./sy (915 grams/m2)

<b>Pile Density</b>	8040 oz./y3 (298.13 kg/m3)
<b>Pattern Repeat</b>	N/A
<b>Gauge</b>	1/10 [3.94 rows/cm]
<b>Stitches Per Inch</b>	12.7 stitches/in (5.00 stitches/cm)
<b>Standard Size</b>	24" x 24" approx. [60.96cm x 60.96cm]

<b>Standard Adhesive</b>	Commercialon Premium Modular Adhesive
<b>Optional Adhesive</b>	Tile Tabs
<b>Standard Warranties</b>	Encore BCF (with ColorLoc Plus) Lifetime Nexus Modular Lifetime Commercialon Adhesive for Modular Carpet & LVT Lifetime
<b>Optional Warranties</b>	Nexus Cushion Modular Lifetime Tile Tabs Nexus Cushion Adhesive

MODULAR  
INSTALLATION  
METHODS



ashlar



brick



monolithic

CLASSIFICATION:  
SEVERE

ORGANIC LARGE - 30L



TWEED | 7083 | 12" X 48" MODULAR



**COLOR 2978**  
stitch  
**QUICK SHIP**



**COLOR 2984**  
weft  
**QUICK SHIP**



**COLOR 2985**  
woolen  
**QUICK SHIP**



**COLOR 2983**  
serge  
**QUICK SHIP**



**COLOR 2979**  
pleat  
**QUICK SHIP**

<b>Construction</b>	Patterned Loop	<b>Pile Density</b>	7063 oz./y3 [261.90 kg/m3]	<b>Standard Adhesive</b>	Commercialon Premium Modular Adhesive
<b>Backing</b>	Nexus® Modular	<b>Pattern Repeat</b>	N/A	<b>Optional Adhesive</b>	Tile Tabs
<b>Dye Method</b>	Solution Dyed	<b>Gauge</b>	1/12 [4.72 rows/cm]	<b>Standard Warranties</b>	Encore SD Ultima Lifetime Fiber Nexus Modular Lifetime Commercialon Adhesive for Modular Carpet & LVT Lifetime
<b>Fiber Type</b>	Encore® SD Ultima® [with recycled content]	<b>Standard Size</b>	12" x 48" approx. [30.48cm x 121.92cm]	<b>Optional Warranties</b>	Nexus Cushion Modular Lifetime Tile Tabs Nexus Cushion Adhesive
<b>Face Weight</b>	22 oz./sy [746 grams/m2]				

MODULAR  
INSTALLATION  
METHODS



ashlar



basketweave



herringbone

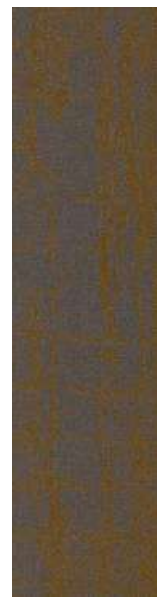


parquet

CLASSIFICATION:  
SEVERE



REVERIE | 7684 | 12" X 48" MODULAR



COLOR 2612  
rustic



COLOR 2613  
function



COLOR 2614  
loft



COLOR 2615  
factory



COLOR 2616  
chalk



COLOR 2617  
preserve



COLOR 2618  
wonder



COLOR 2619  
parlor



COLOR 2620  
mill

<b>Construction</b>	Patterned Loop	<b>Pile Density</b>	7063 oz./y3 [261.90 kg/m3]	<b>Standard Adhesive</b>	Commercial Premium Modular Adhesive
<b>Backing</b>	Nexus® Modular	<b>Pattern Repeat</b>	N/A	<b>Optional Adhesive</b>	Tile Tabs
<b>Dye Method</b>	Solution Dyed	<b>Gauge</b>	1/12 [4.72 rows/cm]	<b>Standard Warranties</b>	Encore SD Ultima Lifetime Fiber Nexus Modular Lifetime Commercialon Adhesive for Modular Carpet & LVT Lifetime
<b>Fiber Type</b>	Encore® SD Ultima® [with recycled content]	<b>Standard Size</b>	12" x 48" approx. [30.48cm x 121.92cm]	<b>Optional Warranties</b>	Nexus Cushion Modular Lifetime Tile Tabs Nexus Cushion Adhesive
<b>Face Weight</b>	22 oz./sy [746 grams/m2]				

MODULAR  
INSTALLATION  
METHODS



ashlar



basketweave



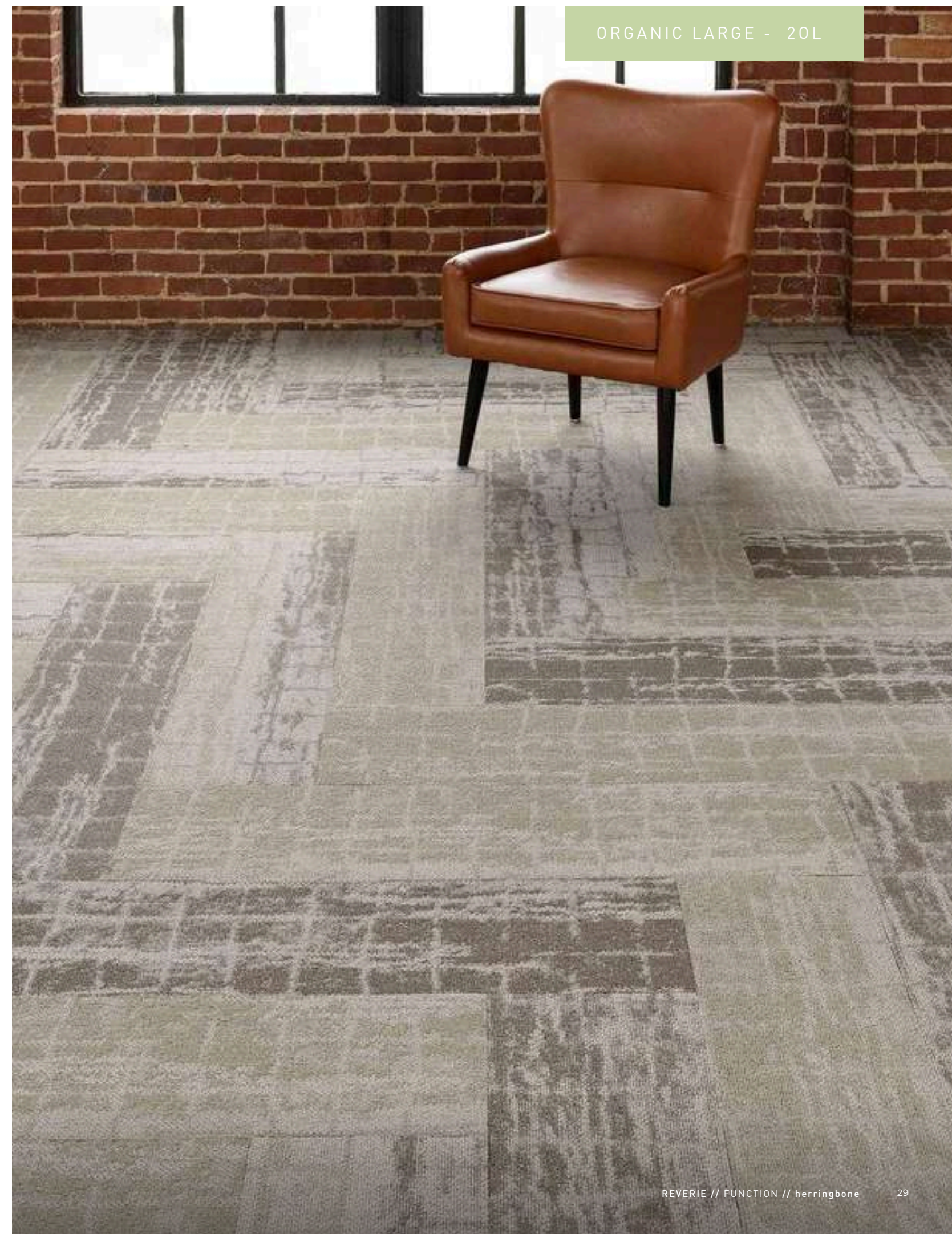
herringbone



parquet

CLASSIFICATION:  
SEVERE

ORGANIC LARGE - 20L



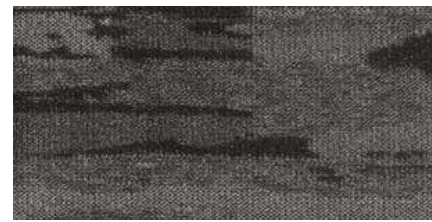
ORGANIC RAKU | 7062 | 18" X 36" MODULAR



**COLOR 2354**  
Adobe



**COLOR 2351**  
burnished



**COLOR 2348**  
flint



**COLOR 2355**  
frits



**COLOR 2350**  
high fire



**COLOR 2353**  
iridescent



**COLOR 2345**  
kiln



**COLOR 2344**  
silica

<b>Construction</b>	Textured Patterned Loop	<b>Pile Density</b>	6845 oz./y3 [253.82 kg/m3]	<b>Standard Adhesive</b>	Commercial Premium Modular Adhesive
<b>Backing</b>	Nexus® Modular	<b>Pattern Repeat</b>	N/A	<b>Optional Adhesive</b>	TileTabs
<b>Dye Method</b>	Solution/Yarn Dyed	<b>Gauge</b>	1/12 [4.72 rows/cm]	<b>Standard Warranties</b>	Encore BCF (with ColorLoc Plus) Lifetime Nexus Modular Lifetime Commercial Adhesive for Modular Carpet & LVT Lifetime
<b>Fiber Type</b>	Encore SD Nylon and Encore Nylon with ColorLoc Plus	<b>Stitches Per Inch</b>	12 stitches/in [4.72 stitches/cm]	<b>Optional Warranties</b>	Nexus Cushion Modular Lifetime Tile Tabs Nexus Cushion Adhesive
<b>Face Weight</b>	24 oz./sy [814 grams/m2]	<b>Standard Size</b>	18" x 36" approx. [45.72cm x 91.44cm]		

MODULAR INSTALLATION METHODS



parquet



basketweave



ashlar



herringbone



CLASSIFICATION:  
SEVERE



IMPULSE III | 7246 | 24" X 24" MODULAR



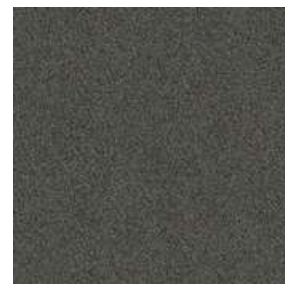
**COLOR 1431**  
roll the dice



**COLOR 1432**  
give it a whirl  
**QUICK SHIP**



**COLOR 1807**  
jump right in  
**QUICK SHIP**



**COLOR 1808**  
make a move  
**QUICK SHIP**



**COLOR 1809**  
let it go



**COLOR 1810**  
work it out



**COLOR 1811**  
tell a tale  
**QUICK SHIP**



**COLOR 3408**  
call an old flame



**COLOR 7412**  
speak your mind  
**QUICK SHIP**



**COLOR 8400**  
take a trip  
**QUICK SHIP**



**COLOR 8401**  
bend a rule



**COLOR 8403**  
take a dare

<b>Construction</b>	Level Loop	<b>Pile Density</b>	7061 oz./y3 [261.83 kg/m3l]	<b>Standard Adhesive</b>	Commercial Premium Modular Adhesive
<b>Backing</b>	Nexus® Modular	<b>Pattern Repeat</b>	N/A	<b>Optional Adhesive</b>	TileTabs
<b>Dye Method</b>	Solution/Yarn Dyed	<b>Gauge</b>	1/10 [3.94 rows/cm]	<b>Standard Warranties</b>	Encore BCF (with ColorLoc Plus) Lifetime Nexus Modular Lifetime Commercialon Adhesive for Modular Carpet & LVT Lifetime
<b>Fiber Type</b>	Encore SD Nylon and Encore Nylon with Color-Loc Plus	<b>Stitches Per Inch</b>	8.5 stitches/in [3.35 stitches/cm]	<b>Optional Warranties</b>	Nexus Cushion Modular Lifetime Tile Tabs Nexus Cushion Adhesive
<b>Face Weight</b>	20 oz./sy [678 grams/m2l]	<b>Standard Size</b>	24" x 24" approx. (60.96cm x 60.96cm)		

MODULAR INSTALLATION METHODS

ashlar brick monolithic quarter turn

CLASSIFICATION:  
SEVERE



PASSAGES MODULAR | 3037 | 24" X 24" MODULAR



**COLOR 2040**  
avenue  
vestibule  
**QUICK SHIP**



**COLOR 2041**  
vestibule  
**QUICK SHIP**



**COLOR 2042**  
corridor  
**QUICK SHIP**



**COLOR 2043**  
access  
**QUICK SHIP**



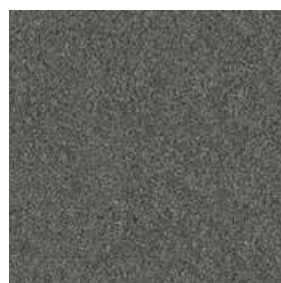
**COLOR 2044**  
aisle  
**QUICK SHIP**



**COLOR 2045**  
lane  
**QUICK SHIP**



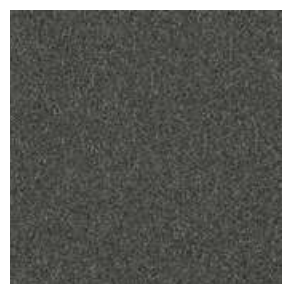
**COLOR 2046**  
channel  
**QUICK SHIP**



**COLOR 2047**  
route  
**QUICK SHIP**



**COLOR 2048**  
course  
**QUICK SHIP**



**COLOR 2049**  
alley  
**QUICK SHIP**



**COLOR 2050**  
pathway  
**QUICK SHIP**



**COLOR 2051**  
trail  
**QUICK SHIP**

<b>Construction</b>	Textured Loop	<b>Pile Density</b>	7452 oz./y3 [276.32 kg/m3]	<b>Standard Adhesive</b>	Commercial Premium Carpet Adhesive
<b>Backing</b>	Nexus® Modular	<b>Pattern Repeat</b>	N/A	<b>Standard Warranties</b>	Encore SD Ultima Lifetime Fiber PremierBac Plus Commercial Premium Broadloom Adhesive Lifetime
<b>Dye Method</b>	Solution Dyed	<b>Gauge</b>	1/10 [3.94 rows/cm]	<b>Optional Warranties</b>	Edure Plus Lifetime TitanBac Plus Lifetime
<b>Fiber Type</b>	Encore® SD Ultima® [with recycled content]	<b>Stitches Per Inch</b>	8 stitches/in [3.15 stitches/cm]		
<b>Face Weight</b>	20 oz./sy [678 grams/m2]	<b>Standard Width</b>	24" x 24" approx. [60.96cm x 60.96cm]		

CLASSIFICATION:  
SEVERE



CRAFTWORK | 7099 | 24" X 24" MODULAR



COLOR 2198  
mason



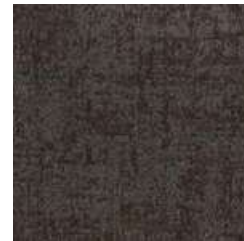
COLOR 3316  
jeweler



COLOR 2200  
potter  
**QUICK SHIP**



COLOR 2201  
weaver  
**QUICK SHIP**



COLOR 2202  
woodworker



COLOR 3317  
carver



COLOR 2204  
painter  
**QUICK SHIP**



COLOR 2205  
quilter



COLOR 2206  
glassblower



COLOR 2207  
tailor  
**QUICK SHIP**



COLOR 3318  
metalsmith  
**QUICK SHIP**



COLOR 2210  
blacksmith

<b>Construction</b>	Textured Patterned Loop	<b>Pile Density</b>	8254 oz./y3 (306.06 kg/m3)	<b>Standard Adhesive</b>	Commercial Premium Modular Adhesive
<b>Backing</b>	Nexus® Modular	<b>Pattern Repeat</b>	N/A	<b>Optional Adhesive</b>	TileTabs
<b>Dye Method</b>	Solution Dyed	<b>Gauge</b>	1/12 (4.72 rows/cm)	<b>Standard Warranties</b>	Encore SD Ultima Lifetime Fiber Nexus Modular Lifetime Commercial Adhesive for Modular Carpet & LVT Lifetime
<b>Fiber Type</b>	Encore® SD Ultima® (with recycled content)	<b>Stitches Per Inch</b>	12.3 stitches/in (4.84 stitches/cm)	<b>Optional Warranties</b>	Nexus Cushion Modular Lifetime Tile Tabs Nexus Cushion Adhesive
<b>Face Weight</b>	30 oz./sy (1017 grams/m2)	<b>Standard Size</b>	24" x 24" approx. (60.96cm x 60.96cm)		

MODULAR  
INSTALLATION  
METHODS



ashlar



brick



monolithic



quarter turn

CLASSIFICATION:  
SEVERE



ADVANCE | 7600 | 18" X 36" MODULAR



**COLOR 3266**  
cool oasis



**COLOR 3267**  
citrus oasis



**COLOR 3268**  
crystal oasis



**COLOR 3269**  
lime oasis



**COLOR 3270**  
warm beam



**COLOR 3271**  
gold beam



**COLOR 3272**  
azure beam



**COLOR 3273**  
light beam



**COLOR 3274**  
carbon path



**COLOR 3275**  
royal path



**COLOR 3276**  
plum path



**COLOR 3277**  
brick path

<b>Construction</b>	Patterned Loop	<b>Pile Density</b>	7391 oz./y3 (274.06 kg/m3)	<b>Standard Adhesive</b>	Commercialon Premium Modular Adhesive
<b>Backing</b>	Nexus® Modular	<b>Pattern Repeat</b>	N/A	<b>Optional Adhesive</b>	TileTabs
<b>Dye Method</b>	Solution Dyed	<b>Gauge</b>	1/12 (4.72 rows/cm)	<b>Standard Warranties</b>	Encore SD Ultima Lifetime Fiber Nexus Modular Lifetime Commercialon Adhesive for Modular Carpet & LVT Lifetime
<b>Fiber Type</b>	Encore® SD Ultima® (with recycled content)	<b>Stitches Per Inch</b>	10 stitches/in (3.94 stitches/cm)	<b>Optional Warranties</b>	Nexus Cushion Modular Lifetime Tile Tabs Nexus Cushion Adhesive
<b>Face Weight</b>	20 oz./sy (678 grams/m2)	<b>Standard Size</b>	18" x 36" approx. (45.72cm x 91.44cm)		

MODULAR INSTALLATION METHODS



CLASSIFICATION:  
HEAVY



CUMLUS | 7480 | 18" X 36" MODULAR



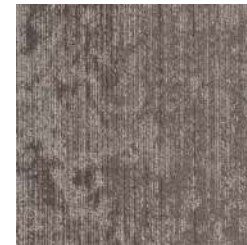
COLOR 3480  
stratus color



COLOR 3481  
stratus natural



COLOR 3482  
cirro color



COLOR 3483  
cirro natural



COLOR 3484  
alto color



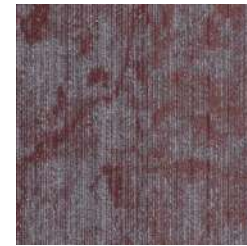
COLOR 3485  
alto natural



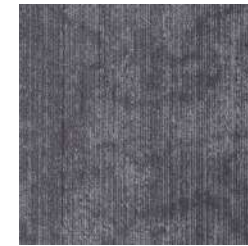
COLOR 3486  
nimbus color



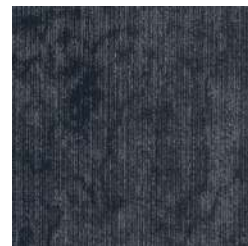
COLOR 3487  
nimbus natural



COLOR 3488  
strato color



COLOR 3489  
strato natural



COLOR 3490  
cumulo color



COLOR 3491  
cumulo natural



COLOR 3492  
cirrus color



COLOR 3493  
cirrus natural

<b>Construction</b>	Patterned Loop	<b>Pile Density</b>	8100 oz./y3 (300.35 kg/m3)	<b>Standard Adhesive</b>	Commercialon Premium Modular Adhesive
<b>Backing</b>	Nexus® Modular	<b>Pattern Repeat</b>	N/A	<b>Optional Adhesive</b>	TileTabs
<b>Dye Method</b>	Solution Dyed	<b>Gauge</b>	1/12 (4.72 rows/cm)	<b>Standard Warranties</b>	Encore SD Ultima Lifetime Fiber Nexus Modular Lifetime Commercialon Adhesive for Modular Carpet & LVT Lifetime
<b>Fiber Type</b>	Encore® SD Ultima® (with recycled content)	<b>Stitches Per Inch</b>	10 stitches/in (3.94 stitches/cm)	<b>Optional Warranties</b>	Nexus Cushion Modular Lifetime Tile Tabs Nexus Cushion Adhesive
<b>Face Weight</b>	22 oz./sy (746 grams/m2)	<b>Standard Size</b>	18" x 36" approx. (45.72cm x 91.44cm)		

MODULAR INSTALLATION METHODS



parquet



basketweave



ashlar



herringbone



brick



monolithic

CLASSIFICATION:  
HEAVY



COLOR ZONE | 7479 | 18"x36" & 24" X 24" MODULAR



<b>Construction</b>	Textured Patterned Loop	<b>Pile Density</b>	5925 oz./y3 [219.70 kg/m3]	<b>Standard Adhesive</b>	Commercialon Premium Modular Adhesive
<b>Backing</b>	Nexus® Modular	<b>Pattern Repeat</b>	N/A	<b>Optional Adhesive</b>	TileTabs
<b>Dye Method</b>	Solution Dyed	<b>Gauge</b>	1/12 (4.72 rows/cm)	<b>Standard Warranties</b>	Encore SD Ultima Lifetime Fiber Nexus Modular Lifetime Commercialon Adhesive for Modular Carpet & LVT Lifetime
<b>Fiber Type</b>	Encore® SD Ultima® (with recycled content)	<b>Stitches Per Inch</b>	9.3 stitches/in [3.66 stitches/cm]	<b>Optional Warranties</b>	Nexus Cushion Modular Lifetime Tile Tabs Nexus Cushion Adhesive
<b>Face Weight</b>	16 oz./sy [543 grams/m2]	<b>Standard Size</b>	24" x 24" approx. [60.96cm x 60.96cm]		



CLASSIFICATION: SEVERE



IMPULSE III | 2433 | BROADLOOM



**COLOR 1431**  
roll the dice



**COLOR 1432**  
give it a whirl  
**QUICK SHIP**



**COLOR 1807**  
jump right in  
**QUICK SHIP**



**COLOR 1808**  
make a move  
**QUICK SHIP**



**COLOR 1809**  
let it go



**COLOR 1810**  
work it out



**COLOR 1811**  
tell a tale  
**QUICK SHIP**



**COLOR 3408**  
call an old flame



**COLOR 7412**  
speak your mind  
**QUICK SHIP**



**COLOR 8400**  
take a trip  
**QUICK SHIP**



**COLOR 8401**  
bend a rule



**COLOR 8403**  
take a dare

<b>Construction</b>	Level Loop
<b>Backing</b>	PremierBac® Plus [standard backing]
<b>Dye Method</b>	Solution/Yarn Dyed
<b>Fiber Type</b>	Encore SD Nylon and Encore Nylon with ColorLoc Plus
<b>Face Weight</b>	20 oz./sy [678 grams/m2]

<b>Pile Density</b>	7452 oz./y3 [276.32 kg/m3]
<b>Pattern Repeat</b>	N/A
<b>Gauge</b>	1/10 [3.94 rows/cm]
<b>Stitches Per Inch</b>	7.83 stitches/in [3.08 stitches/cm]
<b>Standard Size</b>	12 ft 3.66 m

<b>Standard Adhesive</b>	Commercialon Premium Carpet Adhesive
<b>Standard Warranties</b>	Encore BCF (with Colorloc Plus) Lifetime PremierBac Plus Commercialon Premium Broadloom Adhesive Lifetime
<b>Optional Warranties</b>	Endure Plus Lifetime TitanBac Plus Lifetime

CLASSIFICATION:  
HEAVY

ORGANIC ROLLS - R-SMALL



BOUCLÉ | 3081 | BROADLOOM



COLOR 2703  
texture



COLOR 2704  
variegated



COLOR 2706  
strand



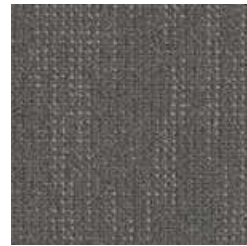
COLOR 2707  
fiber



COLOR 2708  
warp



COLOR 2709  
character



COLOR 2710  
tweed



COLOR 2711  
knit



COLOR 2712  
knot



COLOR 2713  
loop



COLOR 2714  
nubby



COLOR 2715  
weave



COLOR 2716  
structure

<b>Construction</b>	Textured Loop	<b>Pile Density</b>	7795 oz./y3 [289.04 kg/m3]	<b>Standard Adhesive</b>	Commercialon Premium Carpet Adhesive
<b>Backing</b>	PremierBac® Plus [standard backing]	<b>Pattern Repeat</b>	.50" [w] x .00" [l] approx. [1.27cm x .00cm]	<b>Standard Warranties</b>	Encore SD Ultima Lifetime Fiber PremierBac Plus Commercialon Premium Broadloom Adhesive Lifetime
<b>Dye Method</b>	Solution Dyed	<b>Gauge</b>	1/10 [3.94 rows/cm]	<b>Optional Warranties</b>	Endure Plus Lifetime TitanBac Plus Lifetime
<b>Fiber Type</b>	Encore® SD Ultima® [with recycled content]	<b>Stitches Per Inch</b>	9 stitches/in [3.54 stitches/cm]		
<b>Face Weight</b>	25 oz./sy [848 grams/m2]	<b>Standard Size</b>	12 ft 3.66 m		

CLASSIFICATION:  
SEVERE



PASSAGES 26 | 3037 | BROADLOOM



**COLOR 2040**  
avenue  
**QUICK SHIP**



**COLOR 2041**  
vestibule  
**QUICK SHIP**



**COLOR 2042**  
corridor  
**QUICK SHIP**



**COLOR 2043**  
access  
**QUICK SHIP**



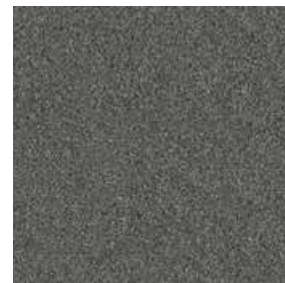
**COLOR 2044**  
aisle  
**QUICK SHIP**



**COLOR 2045**  
lane  
**QUICK SHIP**



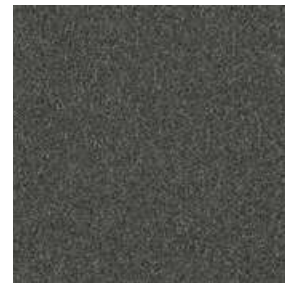
**COLOR 2046**  
channel  
**QUICK SHIP**



**COLOR 2047**  
route  
**QUICK SHIP**



**COLOR 2048**  
course  
**QUICK SHIP**



**COLOR 2049**  
alley  
**QUICK SHIP**



**COLOR 2050**  
pathway  
**QUICK SHIP**



**COLOR 2051**  
trail  
**QUICK SHIP**

<b>Construction</b>	Level Loop	<b>Pile Density</b>	7172 oz./y3 [265.94 kg/m3]	<b>Standard Adhesive</b>	Commercial Premium Carpet Adhesive
<b>Backing</b>	PremierBac® Plus [standard backing]	<b>Pattern Repeat</b>	N/A	<b>Standard Warranties</b>	Encore SD Ultima Lifetime Fiber PremierBac Plus Commercial Premium Broadloom Adhesive Lifetime
<b>Dye Method</b>	Solution Dyed	<b>Gauge</b>	1/10 [3.94 rows/cm]	<b>Optional Warranties</b>	Edure Plus Lifetime TitanBac Plus Lifetime
<b>Fiber Type</b>	Encore® SD Ultima® [with recycled content]	<b>Stitches Per Inch</b>	9.8 stitches/in [3.86 stitches/cm]		
<b>Face Weight</b>	26 oz./sy [882 grams/m2]	<b>Standard Width</b>	12 ft 3.66 m		

CLASSIFICATION:  
SEVERE



FICTION II | 7025 | 24" X 24" MODULAR



COLOR 1772  
fantasy



COLOR 1773  
conflict  
**QUICK SHIP**



COLOR 1774  
parody



COLOR 1775  
irony  
**QUICK SHIP**



COLOR 1785  
dialogue  
**QUICK SHIP**



COLOR 3344  
subtitle  
**QUICK SHIP**



COLOR 3345  
spine



COLOR 3346  
lexicon  
**QUICK SHIP**

<b>Construction</b>	Textured Patterned Loop	<b>Pile Density</b>	5925 oz./y3 (219.70 kg/m3)	<b>Standard Adhesive</b>	Commercialon Premium Modular Adhesive
<b>Backing</b>	Nexus® Modular	<b>Pattern Repeat</b>	N/A	<b>Optional Adhesive</b>	Tile Tabs
<b>Dye Method</b>	Solution Dyed	<b>Gauge</b>	1/12 (4.72 rows/cm)	<b>Standard Warranties</b>	Encore SD Ultima Lifetime Fiber Nexus Modular Lifetime Commercialon Adhesive for Modular Carpet & LVT Lifetime
<b>Fiber Type</b>	Encore® SD Ultima® (with recycled content)	<b>Stitches Per Inch</b>	10 stitches/in (3.94 stitches/cm)	<b>Optional Warranties</b>	Nexus Cushion Modular Lifetime Tile Tabs Nexus Cushion Adhesive
<b>Face Weight</b>	19 oz./sy (644 grams/m2)	<b>Standard Size</b>	24" x 24" approx. 160.96cm x 60.96cm		

MODULAR  
INSTALLATION  
METHODS



CLASSIFICATION:  
HEAVY



CITY BLOCKS III | 7202 | 24" X 24" MODULAR



**COLOR 1315**  
jackson square



**COLOR 2103**  
freedom square



**COLOR 2104**  
celebration square



**COLOR 2105**  
university square



**COLOR 3341**  
grand square



**COLOR 3342**  
tower square



**COLOR 3343**  
market square

<b>Construction</b>	Textured Patterned Loop	<b>Pile Density</b>	6542 oz./y3 [242.58 kg/m3]	<b>Standard Adhesive</b>	Commercialon Premium Modular Adhesive
<b>Backing</b>	Nexus® Modular	<b>Pattern Repeat</b>	N/A	<b>Optional Adhesive</b>	Tile Tabs
<b>Dye Method</b>	Solution/Yarn Dyed	<b>Gauge</b>	1/12 (4.72 rows/cm)	<b>Standard Warranties</b>	Encore BCF (with ColorLoc Plus) Lifetime Nexus Modular Lifetime Commercialon Adhesive for Modular Carpet & LVT Lifetime
<b>Fiber Type</b>	Encore SD Nylon and Encore Nylon with ColorLoc Plus	<b>Stitches Per Inch</b>	9.5 stitches/in [3.74 stitches/cm]	<b>Optional Warranties</b>	Nexus Cushion Modular Lifetime Tile Tabs Nexus Cushion Adhesive
<b>Face Weight</b>	18 oz./sy [610 grams/m2]	<b>Standard Size</b>	24" x 24" approx. [60.96cm x 60.96cm]		

MODULAR  
INSTALLATION  
METHODS



CLASSIFICATION:  
SEVERE



NARRATIVE II | 7084 | 12" X 48" MODULAR



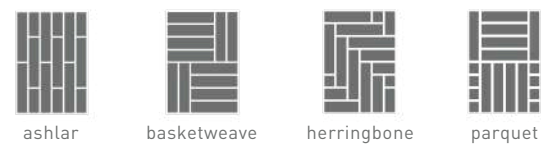
COLOR 1780 cliff-hanger    COLOR 1782 harmony    COLOR 1783 tribute    COLOR 2995 edition    COLOR 2996 forward    COLOR 3003 title    COLOR 3004 afterword



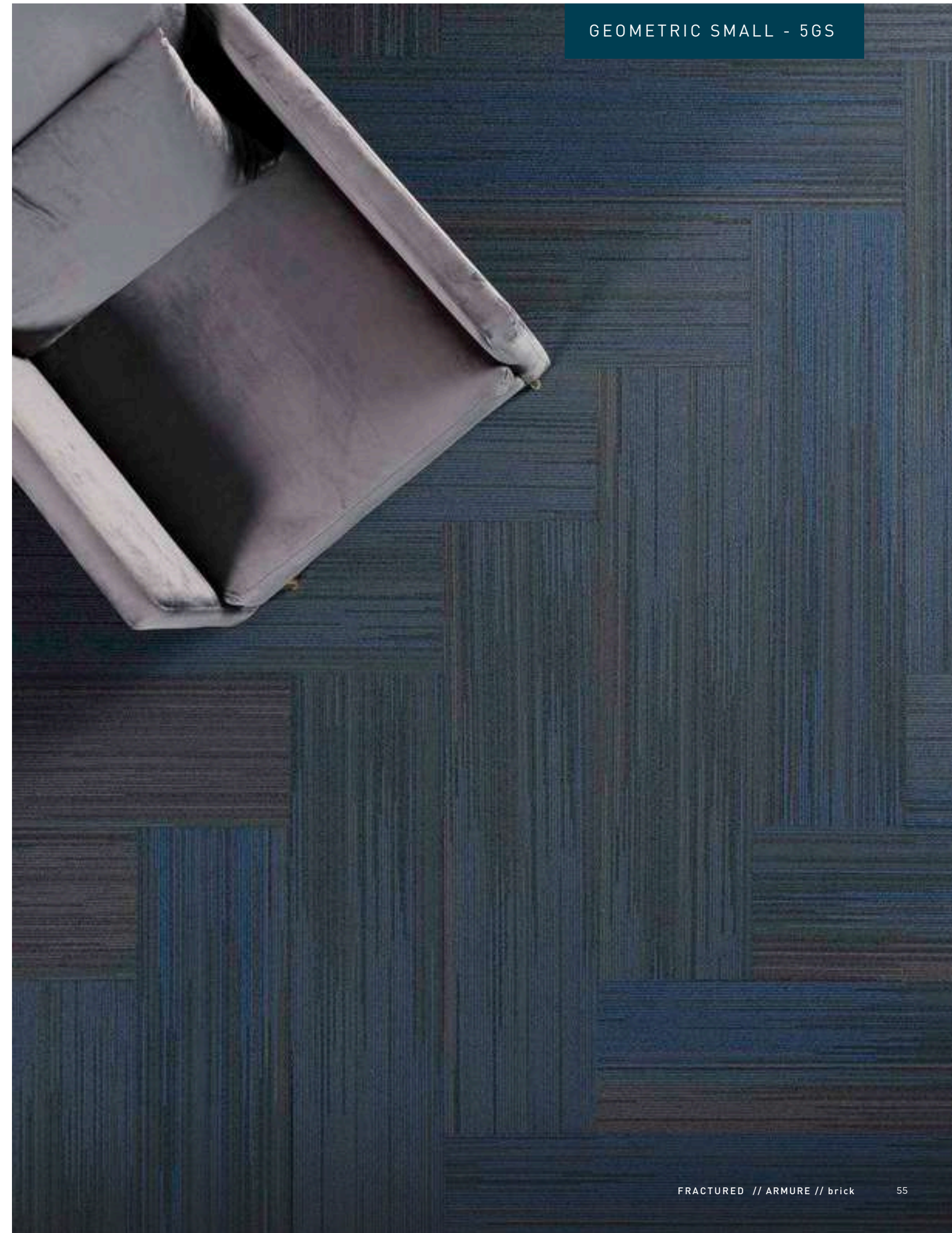
COLOR 2998 epilogue    COLOR 2999 prologue    COLOR 3000 folio    COLOR 3001 glossary    COLOR 3002 binding    COLOR 3073 haiku    COLOR 3074 myth

<b>Construction</b>	Textured Patterned Loop	<b>Pile Density</b>	5925 oz./y3 [219.70 kg/m3]	<b>Standard Adhesive</b>	Commercialon Premium Modular Adhesive
<b>Backing</b>	Nexus® Modular	<b>Pattern Repeat</b>	N/A	<b>Optional Adhesive</b>	TileTabs
<b>Dye Method</b>	Solution Dyed	<b>Gauge</b>	1/12 (4.72 rows/cm)	<b>Standard Warranties</b>	Encore SD Ultima Lifetime Fiber Nexus Modular Lifetime Commercialon Adhesive for Modular Carpet & LVT Lifetime
<b>Fiber Type</b>	Encore® SD Ultima® (with recycled content)	<b>Stitches Per Inch</b>	9.3 stitches/in [3.66 stitches/cm]	<b>Optional Warranties</b>	Nexus Cushion Modular Lifetime Tile Tabs Nexus Cushion Adhesive
<b>Face Weight</b>	16 oz./sy [543 grams/m2]	<b>Standard Size</b>	12" x 48" [30.5 cm x 122.0 cm]		

MODULAR INSTALLATION METHODS



CLASSIFICATION: SEVERE



ZEPHYR | 7478 | 18" X 36" MODULAR



COLOR 3361  
breeze



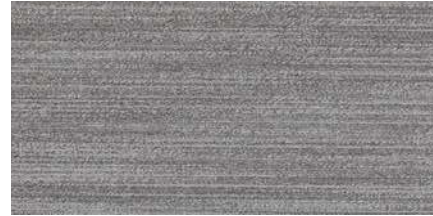
COLOR 3362  
westerlies



COLOR 3363  
local



COLOR 3364  
trade



COLOR 3365  
winds



COLOR 3366  
planetary



COLOR 3367  
monsoon

<b>Construction</b>	Patterned Loop	<b>Pile Density</b>	7391 oz./y3 (274.06 kg/m3)	<b>Standard Adhesive</b>	Commercialon Premium Modular Adhesive
<b>Backing</b>	Nexus® Modular	<b>Pattern Repeat</b>	N/A	<b>Optional Adhesive</b>	TileTabs
<b>Dye Method</b>	Solution Dyed	<b>Gauge</b>	1/12 (4.72 rows/cm)	<b>Standard Warranties</b>	Encore SD Ultima Lifetime Fiber Nexus Modular Lifetime Commercialon Adhesive for Modular Carpet & LVT Lifetime
<b>Fiber Type</b>	Encore® SD Ultima® (with recycled content)	<b>Stitches Per Inch</b>	10 stitches/in (3.94 stitches/cm)	<b>Optional Warranties</b>	Nexus Cushion Modular Lifetime Tile Tabs Nexus Cushion Adhesive
<b>Face Weight</b>	20 oz./sy (678 grams/m2)	<b>Standard Size</b>	18" x 36" approx. (45.72cm x 91.44cm)		

MODULAR  
INSTALLATION  
METHODS



parquet



basketweave



ashlar



herringbone



brick

CLASSIFICATION:  
HEAVY



MERIDIAN | 7579 | 24" X 24" MODULAR



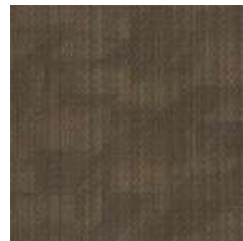
**COLOR 2052**  
vista  
**QUICK SHIP**



**COLOR 2053**  
zenith  
**QUICK SHIP**



**COLOR 2054**  
highrise  
**QUICK SHIP**



**COLOR 2055**  
beacon



**COLOR 2056**  
backdrop



**COLOR 2057**  
aerial  
**QUICK SHIP**



**COLOR 2058**  
overlook



**COLOR 2062**  
sight line



**COLOR 2064**  
view  
**QUICK SHIP**



**COLOR 2065**  
empire



**COLOR 2066**  
silhouette



**COLOR 2069**  
terrace



**COLOR 2070**  
vanishing point  
**QUICK SHIP**



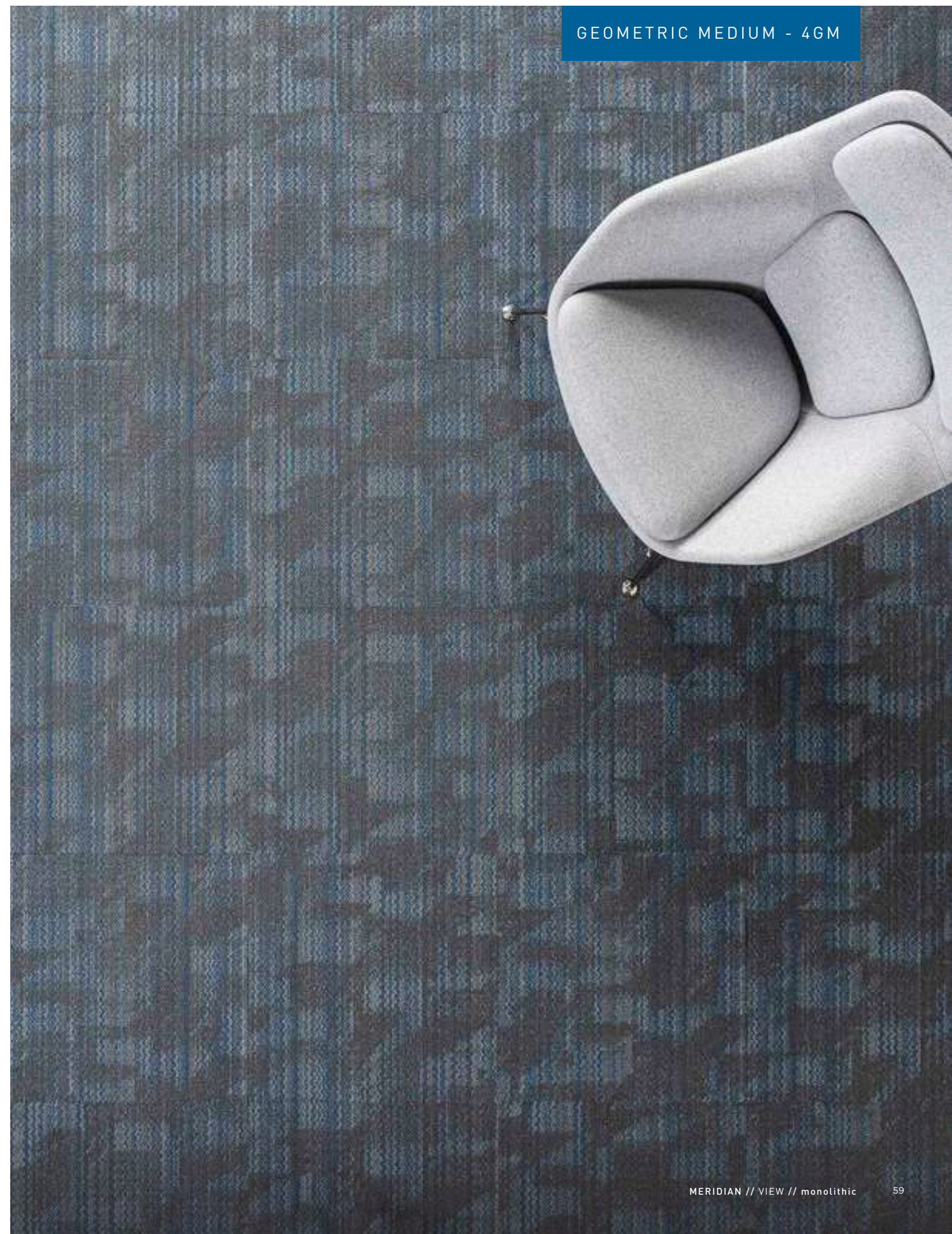
**COLOR 2071**  
panorama

<b>Construction</b>	Patterned Loop	<b>Pile Density</b>	5925 oz./y3 [219.70 kg/m3]	<b>Standard Adhesive</b>	Commercialon Premium Modular Adhesive
<b>Backing</b>	Nexus® Modular	<b>Pattern Repeat</b>	N/A	<b>Optional Adhesive</b>	TileTabs
<b>Dye Method</b>	Solution Dyed	<b>Gauge</b>	1/12 (4.72 rows/cm)	<b>Standard Warranties</b>	Encore SD Ultima Lifetime Fiber Nexus Modular Lifetime Commercialon Adhesive for Modular Carpet & LVT Lifetime
<b>Fiber Type</b>	Encore® SD Ultima® [with recycled content]	<b>Stitches Per Inch</b>	9.3 stitches/in [3.66 stitches/cm]	<b>Optional Warranties</b>	Nexus Cushion Modular Lifetime Tile Tabs Nexus Cushion Adhesive
<b>Face Weight</b>	16 oz./sy [543 grams/m2]	<b>Standard Size</b>	24" x 24" approx. [60.96cm x 60.96cm]		

MODULAR INSTALLATION METHODS



CLASSIFICATION:  
HEAVY



NATURALIST | 7572 | 24" X 24" MODULAR



COLOR 3228  
sky



COLOR 3230  
pine



COLOR 3232  
coffee



COLOR 3234  
sailor



COLOR 3236  
sandstone



COLOR 3229  
soft grey



COLOR 3231  
teal



COLOR 3233  
terra



COLOR 3235  
meadowlark



COLOR 3237  
smoke

<b>Construction</b>	Patterned Loop	<b>Pile Density</b>	8040 oz./y3 (298.13 kg/m3)	<b>Standard Adhesive</b>	Commercialon Premium Modular Adhesive
<b>Backing</b>	Nexus® Modular	<b>Pattern Repeat</b>	N/A	<b>Optional Adhesive</b>	Tile Tabs
<b>Dye Method</b>	Solution/Yarn Dyed	<b>Gauge</b>	1/10 [3.94 rows/cm]	<b>Standard Warranties</b>	Encore BCF (with ColorLoc Plus) Lifetime Nexus Modular Lifetime Commercialon Adhesive for Modular Carpet & LVT Lifetime
<b>Fiber Type</b>	Encore® RE Nylon [recycled content]	<b>Stitches Per Inch</b>	12.7 stitches/in [5.00 stitches/cm]	<b>Optional Warranties</b>	Nexus Cushion Modular Lifetime Tile Tabs Nexus Cushion Adhesive
<b>Face Weight</b>	20 oz./sy [678 grams/m2]	<b>Standard Size</b>	24" x 24" approx. [60.96cm x 60.96cm]		



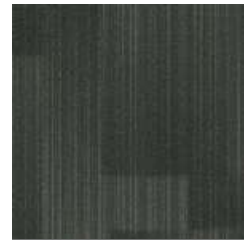
CLASSIFICATION:  
SEVERE



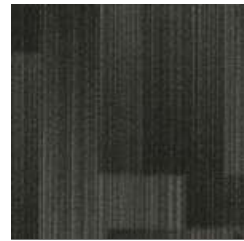
SKYLINE | 7073 | 24" X 24" MODULAR



**COLOR 2052**  
vista  
**QUICK SHIP**



**COLOR 2053**  
zenith  
**QUICK SHIP**



**COLOR 2054**  
highrise  
**QUICK SHIP**



**COLOR 2055**  
beacon



**COLOR 2056**  
backdrop



**COLOR 2057**  
aerial  
**QUICK SHIP**



**COLOR 2058**  
overlook



**COLOR 2062**  
sight line



**COLOR 2064**  
view  
**QUICK SHIP**



**COLOR 2065**  
empire



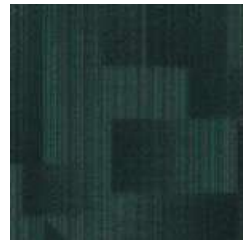
**COLOR 2066**  
silhouette



**COLOR 2069**  
terrace



**COLOR 2070**  
vanishing point  
**QUICK SHIP**



**COLOR 2071**  
panorama

<b>Construction</b>	Textured Patterned Loop
<b>Backing</b>	Nexus® Modular
<b>Dye Method</b>	Solution Dyed
<b>Fiber Type</b>	Encore® SD Ultima® [with recycled content]
<b>Face Weight</b>	16 oz./sy [543 grams/m2]

<b>Pile Density</b>	5672 oz./y3 [219.70 kg/m3]
<b>Pattern Repeat</b>	N/A
<b>Gauge</b>	1/12 (4.72 rows/cm)
<b>Stitches Per Inch</b>	10 stitches/in (3.94 stitches/cm)
<b>Standard Size</b>	24" x 24" approx. (60.96cm x 60.96cm)

<b>Standard Adhesive</b>	Commercialon Premium Modular Adhesive
<b>Optional Adhesive</b>	TileTabs
<b>Standard Warranties</b>	Encore SD Ultima Lifetime Fiber Nexus Modular Lifetime Commercialon Adhesive for Modular Carpet & LVT Lifetime
<b>Optional Warranties</b>	Nexus Cushion Modular Lifetime Tile Tabs Nexus Cushion Adhesive

MODULAR  
INSTALLATION  
METHODS



CLASSIFICATION:  
SEVERE



STRIA | 7585 | 12" X 48" MODULAR



COLOR 2739 vinyl  
 COLOR 2740 blend  
 COLOR 2741 merino  
 COLOR 2742 pima  
 COLOR 2743 knit  
 COLOR 2744 2744  
 COLOR 2745 fleece



COLOR 2746 viscose  
 COLOR 2747 kashmir  
 COLOR 2748 crewel  
 COLOR 2749 rib knit  
 COLOR 2750 terry  
 COLOR 2751 cable  
 COLOR 2752 poplin

<b>Construction</b>	Textured Patterned Loop	<b>Pile Density</b>	5657 oz./y3 [209.77 kg/m3]	<b>Standard Adhesive</b>	Commercial Premium Modular Adhesive
<b>Backing</b>	Nexus® Modular	<b>Pattern Repeat</b>	N/A	<b>Optional Warranties</b>	Tile Tabs
<b>Dye Method</b>	Solution/Yarn Dyed	<b>Gauge</b>	1/12 [4.72 rows/cm]	<b>Standard Warranties</b>	Encore BCF (with ColorLoc Plus) Lifetime Nexus Modular Lifetime Commercial Adhesive for Modular Carpet & LVT Lifetime
<b>Fiber Type</b>	Encore SD Nylon and Encore Nylon with ColorLoc Plus	<b>Stitches Per Inch</b>	11 stitches/in [4.33 stitches/cm]	<b>Optional Warranties</b>	Nexus Cushion Modular Lifetime Tile Tabs Nexus Cushion Adhesive
<b>Face Weight</b>	22 oz./sy [746 grams/m2]	<b>Standard Size</b>	12" x 48" approx. [30.48cm x 121.92cm]		

MODULAR INSTALLATION METHODS



CLASSIFICATION: SEVERE



WELL VERSED MODULAR | 7072 | 24" X 24" MODULAR



**QUICK SHIP**  
COLOR 3522  
lewis



**QUICK SHIP**  
COLOR 2027  
blake



**QUICK SHIP**  
COLOR 2026  
plath



**QUICK SHIP**  
COLOR 3520  
austen



**QUICK SHIP**  
COLOR 2024  
wilde



**QUICK SHIP**  
COLOR 2025  
whitman



**QUICK SHIP**  
COLOR 3521  
woolf



**QUICK SHIP**  
COLOR 3523  
king



**QUICK SHIP**  
COLOR 2022  
frost



**QUICK SHIP**  
COLOR 2023  
hughes

<b>Construction</b>	Textured Patterned Loop	<b>Pile Density</b>	5330 oz./y3 [197.64 kg/m3]	<b>Standard Adhesive</b>	Commercial Premium Modular Adhesive
<b>Backing</b>	Nexus® Modular	<b>Pattern Repeat</b>	N/A	<b>Optional Adhesive</b>	Tile Tabs
<b>Dye Method</b>	Solution Dyed	<b>Gauge</b>	1/12 (4.72 rows/cm)	<b>Standard Warranties</b>	Encore SD Ultima Lifetime Fiber Nexus Modular Lifetime Commercial Adhesive for Modular Carpet & LVT Lifetime
<b>Fiber Type</b>	Encore® SD Ultima® [with recycled content]	<b>Stitches Per Inch</b>	9.6 stitches/in [3.78 stitches/cm]	<b>Optional Warranties</b>	Nexus Cushion Modular Lifetime Tile Tabs Nexus Cushion Adhesive
<b>Face Weight</b>	16 oz./sy [543 grams/m2]	<b>Standard Size</b>	24" x 24" approx. [60.96cm x 60.96cm]		

MODULAR  
INSTALLATION  
METHODS



CLASSIFICATION:  
HEAVY



ELEVATED | 7074 | 24" X 24" MODULAR



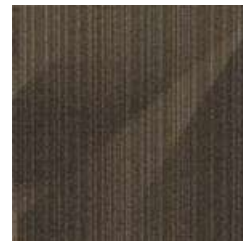
**COLOR 2052**  
vista  
**QUICK SHIP**



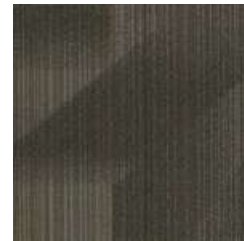
**COLOR 2053**  
zenith  
**QUICK SHIP**



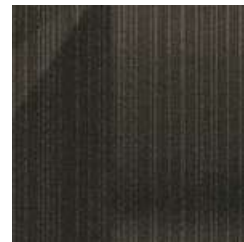
**COLOR 2054**  
highrise  
**QUICK SHIP**



**COLOR 2055**  
beacon



**COLOR 2056**  
backdrop



**COLOR 2057**  
aerial  
**QUICK SHIP**



**COLOR 2058**  
overlook



**COLOR 2062**  
sight line



**COLOR 2064**  
view  
**QUICK SHIP**



**COLOR 2065**  
empire



**COLOR 2066**  
silhouette



**COLOR 2069**  
terrace



**COLOR 2070**  
vanishing point  
**QUICK SHIP**



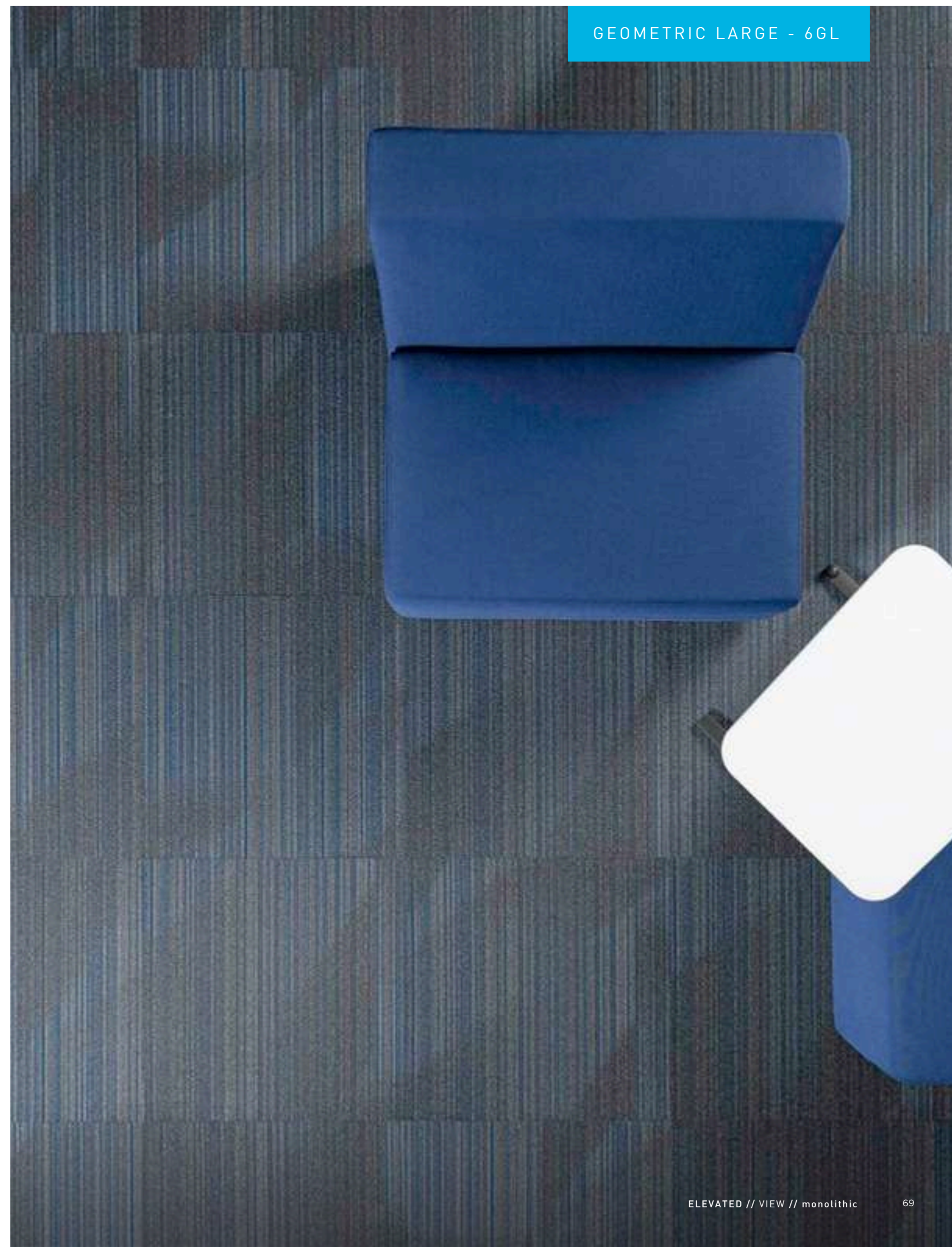
**COLOR 2071**  
panorama

<b>Construction</b>	Textured Patterned Loop	<b>Pile Density</b>	5925 oz./y3 [219.70 kg/m3]	<b>Standard Adhesive</b>	Commercialon Premium Modular Adhesive
<b>Backing</b>	Nexus® Modular	<b>Pattern Repeat</b>	N/A	<b>Optional Adhesive</b>	TileTabs
<b>Dye Method</b>	Solution Dyed	<b>Gauge</b>	1/12 (4.72 rows/cm)	<b>Standard Warranties</b>	Encore SD Ultima Lifetime Fiber Nexus Modular Lifetime Commercialon Adhesive for Modular Carpet & LVT Lifetime
<b>Fiber Type</b>	Encore® SD Ultima® (with recycled content)	<b>Stitches Per Inch</b>	9.3 stitches/in [3.66 stitches/cm]	<b>Optional Warranties</b>	Nexus Cushion Modular Lifetime Tile Tabs Nexus Cushion Adhesive
<b>Face Weight</b>	16 oz./sy [543 grams/m2]	<b>Standard Size</b>	24" x 24" approx. [60.96cm x 60.96cm]		

MODULAR INSTALLATION METHODS



CLASSIFICATION: SEVERE



JOURNEY | 7621 | 18" X 36" MODULAR



COLOR 3347  
pace  
QUICK SHIP



COLOR 3348  
red pace  
QUICK SHIP



COLOR 3349  
blue pace  
QUICK SHIP



COLOR 3350  
purple pace  
QUICK SHIP



COLOR 3351  
lead  
QUICK SHIP



COLOR 3352  
green lead  
QUICK SHIP



COLOR 3353  
gold lead  
QUICK SHIP



COLOR 3354  
orange lead  
QUICK SHIP

<b>Construction</b>	Patterned Loop
<b>Backing</b>	Nexus® Modular
<b>Dye Method</b>	Solution Dyed
<b>Fiber Type</b>	Encore® SD Ultima® (with recycled content)
<b>Face Weight</b>	20 oz./sy (678 grams/m2)

<b>Pile Density</b>	7391 oz./y3 (274.06 kg/m3)
<b>Pattern Repeat</b>	N/A
<b>Gauge</b>	1/12 (4.72 rows/cm)
<b>Stitches Per Inch</b>	10 stitches/in (3.94 stitches/cm)
<b>Standard Size</b>	18" x 36" approx. (45.72cm x 91.44cm)

<b>Standard Adhesive</b>	Commercialon Premium Modular Adhesive
<b>Optional Adhesive</b>	TileTabs
<b>Standard Warranties</b>	Encore SD Ultima Lifetime Fiber Nexus Modular Lifetime Commercialon Adhesive for Modular Carpet & LVT Lifetime
<b>Optional Warranties</b>	Nexus Cushion Modular Lifetime Tile Tabs Nexus Cushion Adhesive

MODULAR  
INSTALLATION  
METHODS



parquet



basketweave



ashlar



herringbone



brick

CLASSIFICATION:  
HEAVY



OUTFITTER | 7064 | 18" X 36" MODULAR



**COLOR 2391**  
muslin  
**QUICK SHIP**



**COLOR 2392**  
corduroy



**COLOR 2393**  
pincord



**COLOR 2394**  
jacquard



**COLOR 2395**  
tricot



**COLOR 2396**  
tweed  
**QUICK SHIP**



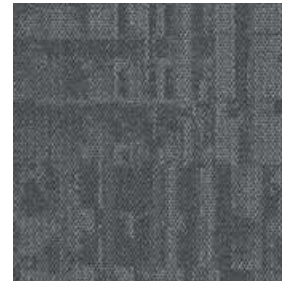
**COLOR 2397**  
seersucker



**COLOR 2398**  
duck  
**QUICK SHIP**



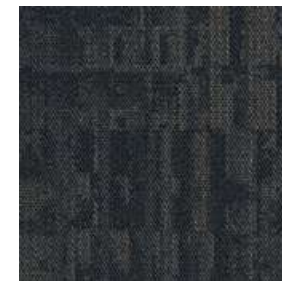
**COLOR 2399**  
oilcloth  
**QUICK SHIP**



**COLOR 2400**  
flocked



**COLOR 2401**  
jersey



**COLOR 2402**  
twill

<b>Construction</b>	Textured Patterned Loop	<b>Pile Density</b>	6726 oz./y3 (249.40 kg/m3l)	<b>Standard Adhesive</b>	Commercialon Premium Modular Adhesive
<b>Backing</b>	Nexus® Modular	<b>Pattern Repeat</b>	N/A	<b>Optional Adhesive</b>	Tile Tabs
<b>Dye Method</b>	Solution Dyed	<b>Gauge</b>	1/1214.72 rows/cm]	<b>Standard Warranties</b>	Encore SD Ultima Fiber Nexus Modular Commercialon Adhesive for Modular Carpet & LVT
<b>Fiber Type</b>	Encore® SD Ultima® [with recycled content]	<b>Stitches Per Inch</b>	10 stitches/in 13.94 stitches/cm]	<b>Optional Warranties</b>	Nexus Cushion Modular Tile Tabs Nexus Cushion Adhesive Commercialon High Moisture Adhesive for Modular Carpet and LVT
<b>Face Weight</b>	15 oz./sy 1509 grams/m2l	<b>Standard Width</b>	18" x 36" approx. [45.72cm x 91.44cm]		

CLASSIFICATION:  
HEAVY



VERTEX | 7438 | 24" X 24" MODULAR



**COLOR SRD13**  
crest  
**QUICK SHIP**



**COLOR SRD14**  
lofty  
**QUICK SHIP**



**COLOR SRD46**  
rocky  
**QUICK SHIP**



**COLOR SRD52**  
peak  
**QUICK SHIP**



**COLOR SRD53**  
spectral  
**QUICK SHIP**



**COLOR SRD54**  
glacial  
**QUICK SHIP**



**COLOR SRD56**  
rugged  
**QUICK SHIP**



**COLOR SRD58**  
apex  
**QUICK SHIP**



**COLOR SRD59**  
mighty  
**QUICK SHIP**



**COLOR SRD73**  
cliff  
**QUICK SHIP**



**COLOR SRD76**  
stony  
**QUICK SHIP**



**COLOR SRD77**  
brow  
**QUICK SHIP**

<b>Construction</b>	Textured Loop	<b>Pile Density</b>	5318 oz./y3 [197.19 kg/m3]	<b>Standard Adhesive</b>	Commercial Premium Modular Adhesive
<b>Backing</b>	Standard Back	<b>Pattern Repeat</b>	N/A	<b>Standard Warranties</b>	Encore SD Ultima Fiber Lifetime Standard Back
<b>Dye Method</b>	Solution Dyed	<b>Gauge</b>	1/10 [3.94 rows/cm]	<b>Optional Warranties</b>	Endure Plus Lifetime TitanBac Plus Lifetime
<b>Fiber Type</b>	Encore® SD Ultima® [with recycled content]	<b>Stitches Per Inch</b>	12.66 stitches/in [4.98 stitches/cm]		
<b>Face Weight</b>	26 oz./sy [882 grams/m2]	<b>Standard Width</b>	12 ft 3.66 m		

CLASSIFICATION:  
HEAVY



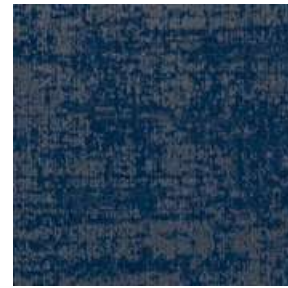
CHROMATICS | 7199 | 24" X 24" MODULAR



COLOR 3320  
arctic



COLOR 3323  
moss



COLOR 3324  
sapphire



COLOR 3319  
scarlet



COLOR 3321  
ink



COLOR 3322  
mulberry

<b>Construction</b>	Textured Patterned Loop	<b>Pile Density</b>	5925 oz./y3 [219.70 kg/m3]	<b>Standard Adhesive</b>	Commercialon Premium Modular Adhesive
<b>Backing</b>	Nexus® Modular	<b>Pattern Repeat</b>	N/A	<b>Optional Adhesive</b>	TileTabs
<b>Dye Method</b>	Solution Dyed	<b>Gauge</b>	1/12 (4.72 rows/cm)	<b>Standard Warranties</b>	Encore SD Ultima Lifetime Fiber Nexus Modular Lifetime Commercialon Adhesive for Modular Carpet & LVT Lifetime
<b>Fiber Type</b>	Encore® SD Ultima® (with recycled content)	<b>Stitches Per Inch</b>	9.3 stitches/in [3.66 stitches/cm]	<b>Optional Warranties</b>	Nexus Cushion Modular Lifetime Tile Tabs Nexus Cushion Adhesive
<b>Face Weight</b>	16 oz./sy [543 grams/m2]	<b>Standard Size</b>	24" x 24" approx. [60.96cm x 60.96cm]		

MODULAR  
INSTALLATION  
METHODS



ashlar



brick



monolithic

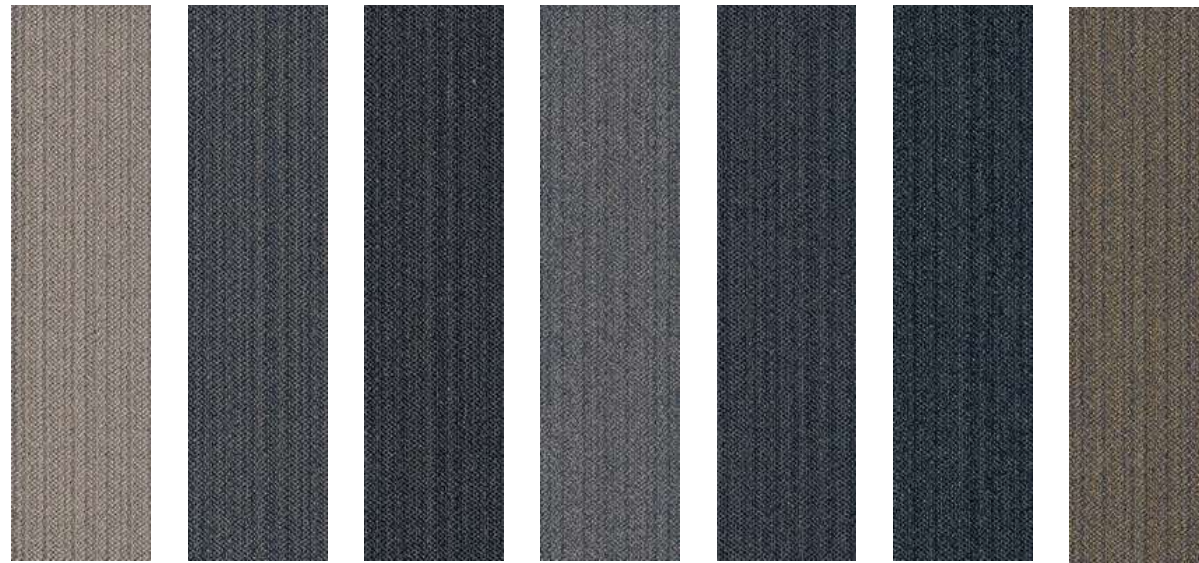


quarter turn

CLASSIFICATION:  
SEVERE



JACK | 7914 | 12" X 48" MODULAR



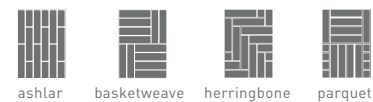
COLOR 3419 vest  
 COLOR 3420 blazer  
 COLOR 3421 lapel  
 COLOR 3422 tie **QUICK SHIP**  
 COLOR 3423 hem **QUICK SHIP**  
 COLOR 3424 facing  
 COLOR 3425 seam



COLOR 3427 notch  
 COLOR 3428 sleeve  
 COLOR 3429 garment **QUICK SHIP**  
 COLOR 3430 fitting  
 COLOR 3431 suit **QUICK SHIP**

<b>Construction</b>	Patterned Loop	<b>Pile Density</b>	7063 oz./y3 [261.90 kg/m3]	<b>Standard Adhesive</b>	Commercialon Premium Modular Adhesive
<b>Backing</b>	Nexus® Modular	<b>Pattern Repeat</b>	N/A	<b>Optional Adhesive</b>	Tile Tabs
<b>Dye Method</b>	Solution Dyed	<b>Gauge</b>	1/12 [4.72 rows/cm]	<b>Standard Warranties</b>	Encore SD Ultima Lifetime Fiber Nexus Modular Lifetime Commercialon Adhesive for Modular Carpet & LVT Lifetime
<b>Fiber Type</b>	Encore® SD Ultima® [with recycled content]	<b>Standard Size</b>	12" x 48" approx. [30.48cm x 121.92cm]	<b>Optional Warranties</b>	Nexus Cushion Modular Lifetime Tile Tabs Nexus Cushion Adhesive
<b>Face Weight</b>	22 oz./sy [746 grams/m2]				

MODULAR  
INSTALLATION  
METHODS



CLASSIFICATION:  
SEVERE



IMPROMPTU | 7071 | 12" X 48" MODULAR



COLOR 2377  
offhand



COLOR 2378  
improvise



COLOR 2380  
unscripted  
**QUICK SHIP**



COLOR 2383  
on a whim



COLOR 2384  
at first glance  
**QUICK SHIP**



COLOR 2385  
free spirit  
**QUICK SHIP**



COLOR 2387  
from the hip



COLOR 2388  
out of the blue



COLOR 2389  
impetuous  
**QUICK SHIP**



COLOR 2390  
on the spot  
**QUICK SHIP**

<b>Construction</b>	Textured Patterned Loop	<b>Pile Density</b>	7540 oz./y3 [279.59 kg/m3]	<b>Standard Adhesive</b>	Commercial Premium Modular Adhesive
<b>Backing</b>	Nexus® Modular	<b>Pattern Repeat</b>	N/A	<b>Optional Warranties</b>	Tile Tabs
<b>Dye Method</b>	Solution/Yarn Dyed	<b>Gauge</b>	1/12 [4.72 rows/cm]	<b>Standard Warranties</b>	Encore BCF (with ColorLoc Plus) Lifetime Nexus Modular Lifetime Commercial Adhesive for Modular Carpet & LVT Lifetime
<b>Fiber Type</b>	Encore SD Nylon and Encore Nylon with ColorLoc Plus	<b>Stitches Per Inch</b>	10 stitches/in [3.94 stitches/cm]	<b>Optional Warranties</b>	Nexus Cushion Modular Lifetime Tile Tabs Nexus Cushion Adhesive
<b>Face Weight</b>	22 oz./sy [746 grams/m2]	<b>Standard Size</b>	12" x 48" approx. [30.48cm x 121.92cm]		

MODULAR INSTALLATION METHODS



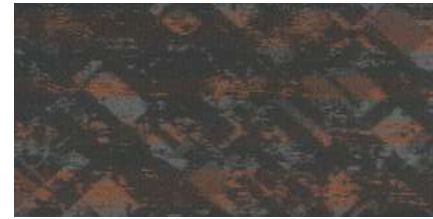
CLASSIFICATION:  
SEVERE



ADVANCE | 7600 | 18" X 36" MODULAR



**COLOR 3266**  
cool oasis



**COLOR 3267**  
citrus oasis



**COLOR 3268**  
crystal oasis



**COLOR 3269**  
lime oasis



**COLOR 3270**  
warm beam



**COLOR 3271**  
gold beam



**COLOR 3272**  
azure beam



**COLOR 3273**  
light beam



**COLOR 3274**  
carbon path



**COLOR 3275**  
royal path



**COLOR 3276**  
plum path



**COLOR 3277**  
brick path

<b>Construction</b>	Patterned Loop	<b>Pile Density</b>	7391 oz./y3 (274.06 kg/m3)	<b>Standard Adhesive</b>	Commercialon Premium Modular Adhesive
<b>Backing</b>	Nexus® Modular	<b>Pattern Repeat</b>	N/A	<b>Optional Adhesive</b>	TileTabs
<b>Dye Method</b>	Solution Dyed	<b>Gauge</b>	1/12 (4.72 rows/cm)	<b>Standard Warranties</b>	Encore SD Ultima Lifetime Fiber Nexus Modular Lifetime Commercialon Adhesive for Modular Carpet & LVT Lifetime
<b>Fiber Type</b>	Encore® SD Ultima® (with recycled content)	<b>Stitches Per Inch</b>	10 stitches/in (3.94 stitches/cm)	<b>Optional Warranties</b>	Nexus Cushion Modular Lifetime Tile Tabs Nexus Cushion Adhesive
<b>Face Weight</b>	20 oz./sy (678 grams/m2)	<b>Standard Size</b>	18" x 36" approx. (45.72cm x 91.44cm)		

MODULAR INSTALLATION METHODS



CLASSIFICATION: HEAVY



VERTEX 26 | 2439 | BROADLOOM



**COLOR SRD13**  
crest  
**QUICK SHIP**



**COLOR SRD14**  
lofty  
**QUICK SHIP**



**COLOR SRD46**  
rocky  
**QUICK SHIP**



**COLOR SRD52**  
peak  
**QUICK SHIP**



**COLOR SRD53**  
spectral  
**QUICK SHIP**



**COLOR SRD54**  
glacial  
**QUICK SHIP**



**COLOR SRD56**  
rugged  
**QUICK SHIP**



**COLOR SRD58**  
apex  
**QUICK SHIP**



**COLOR SRD59**  
mighty  
**QUICK SHIP**



**COLOR SRD73**  
cliff  
**QUICK SHIP**



**COLOR SRD76**  
stony  
**QUICK SHIP**



**COLOR SRD77**  
brow  
**QUICK SHIP**

<b>Construction</b>	Textured Loop	<b>Pile Density</b>	5318 oz./y3 [197.19 kg/m3]	<b>Standard Adhesive</b>	Commercial Premium Modular Adhesive
<b>Backing</b>	Standard Back	<b>Pattern Repeat</b>	N/A	<b>Standard Warranties</b>	Encore SD Ultima Fiber Lifetime Standard Back
<b>Dye Method</b>	Solution Dyed	<b>Gauge</b>	1/10 [3.94 rows/cm]	<b>Optional Warranties</b>	Endure Plus Lifetime TitanBac Plus Lifetime
<b>Fiber Type</b>	Encore® SD Ultima® [with recycled content]	<b>Stitches Per Inch</b>	12.66 stitches/in [4.98 stitches/cm]		
<b>Face Weight</b>	26 oz./sy [882 grams/m2]	<b>Standard Width</b>	12 ft 3.66 m		

CLASSIFICATION:  
HEAVY

GEOMETRIC ROLL - R-SMALL



PASSAGES MODULAR | 7037 | 24" X 24" MODULAR



**COLOR 2040**  
avenue  
vestibule  
**QUICK SHIP**



**COLOR 2041**  
vestibule  
**QUICK SHIP**



**COLOR 2042**  
corridor  
**QUICK SHIP**



**COLOR 2043**  
access  
**QUICK SHIP**



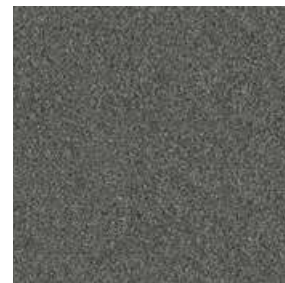
**COLOR 2044**  
aisle  
**QUICK SHIP**



**COLOR 2045**  
lane  
**QUICK SHIP**



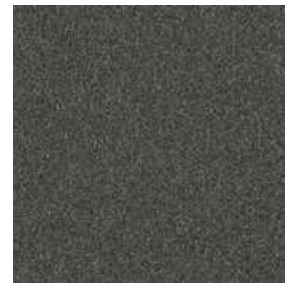
**COLOR 2046**  
channel  
**QUICK SHIP**



**COLOR 2047**  
route  
**QUICK SHIP**



**COLOR 2048**  
course  
**QUICK SHIP**



**COLOR 2049**  
alley  
**QUICK SHIP**



**COLOR 2050**  
pathway  
**QUICK SHIP**



**COLOR 2051**  
trail  
**QUICK SHIP**

<b>Construction</b>	Textured Loop	<b>Pile Density</b>	7452 oz./y3 [276.32 kg/m3]	<b>Standard Adhesive</b>	Commercial Premium Carpet Adhesive
<b>Backing</b>	Nexus® Modular	<b>Pattern Repeat</b>	N/A	<b>Standard Warranties</b>	Encore SD Ultima Lifetime Fiber PremierBac Plus Commercial Premium Broadloom Adhesive Lifetime
<b>Dye Method</b>	Solution Dyed	<b>Gauge</b>	1/10 [3.94 rows/cm]	<b>Optional Warranties</b>	Edure Plus Lifetime TitanBac Plus Lifetime
<b>Fiber Type</b>	Encore® SD Ultima® [with recycled content]	<b>Stitches Per Inch</b>	8 stitches/in [3.15 stitches/cm]		
<b>Face Weight</b>	20 oz./sy [678 grams/m2]	<b>Standard Width</b>	24" x 24" approx. [60.96cm x 60.96cm]		

CLASSIFICATION:  
SEVERE



INCOGNITO | 7069 | 24" X 24" MODULAR



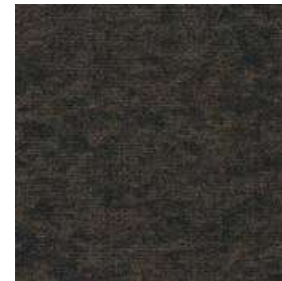
**COLOR 1837**  
operative



**COLOR 1838**  
espionage



**COLOR 1839**  
classified



**COLOR 1840**  
code word



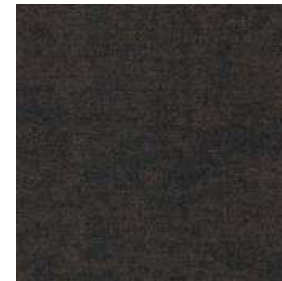
**COLOR 1841**  
intelligence



**COLOR 1842**  
infiltrate



**COLOR 1843**  
wiretap



**COLOR 1844**  
sleeper



**COLOR 1845**  
cryptic

<b>Construction</b>	Textured Patterned Loop
<b>Backing</b>	Nexus® Modular
<b>Dye Method</b>	Solution Dyed
<b>Fiber Type</b>	Encore® SD [with recycled content]
<b>Face Weight</b>	29 oz./sy [983 grams/m2]

<b>Pile Density</b>	8717 oz./y3 [323.23 kg/m3]
<b>Pattern Repeat</b>	N/A
<b>Gauge</b>	1/12 [4.72 rows/cm]
<b>Stitches Per Inch</b>	12 stitches/in [4.72 stitches/cm]
<b>Standard Width</b>	24" x 24" approx. [60.96cm x 60.96cm]

<b>Standard Adhesive</b>	Commercial Premium Modular Adhesive
<b>Optional Adhesive</b>	Tile Tabs
<b>Standard Warranties</b>	Encore SD Ultima Lifetime Fiber Nexus Modular Lifetime Commercial Adhesive for Modular Carpet & LVT Lifetime
<b>Optional Warranties</b>	Nexus Cushion Modular Lifetime Tile Tabs Nexus Cushion Adhesive

MODULAR  
INSTALLATION  
METHODS



ashlar



brick



monolithic



quarter turn

CLASSIFICATION:  
SEVERE



COMMERCIALON® PREMIUM CARPET ADHESIVE

- Minimal Odor
- Low VOC's
- Solvent-free
- Environmentally friendly

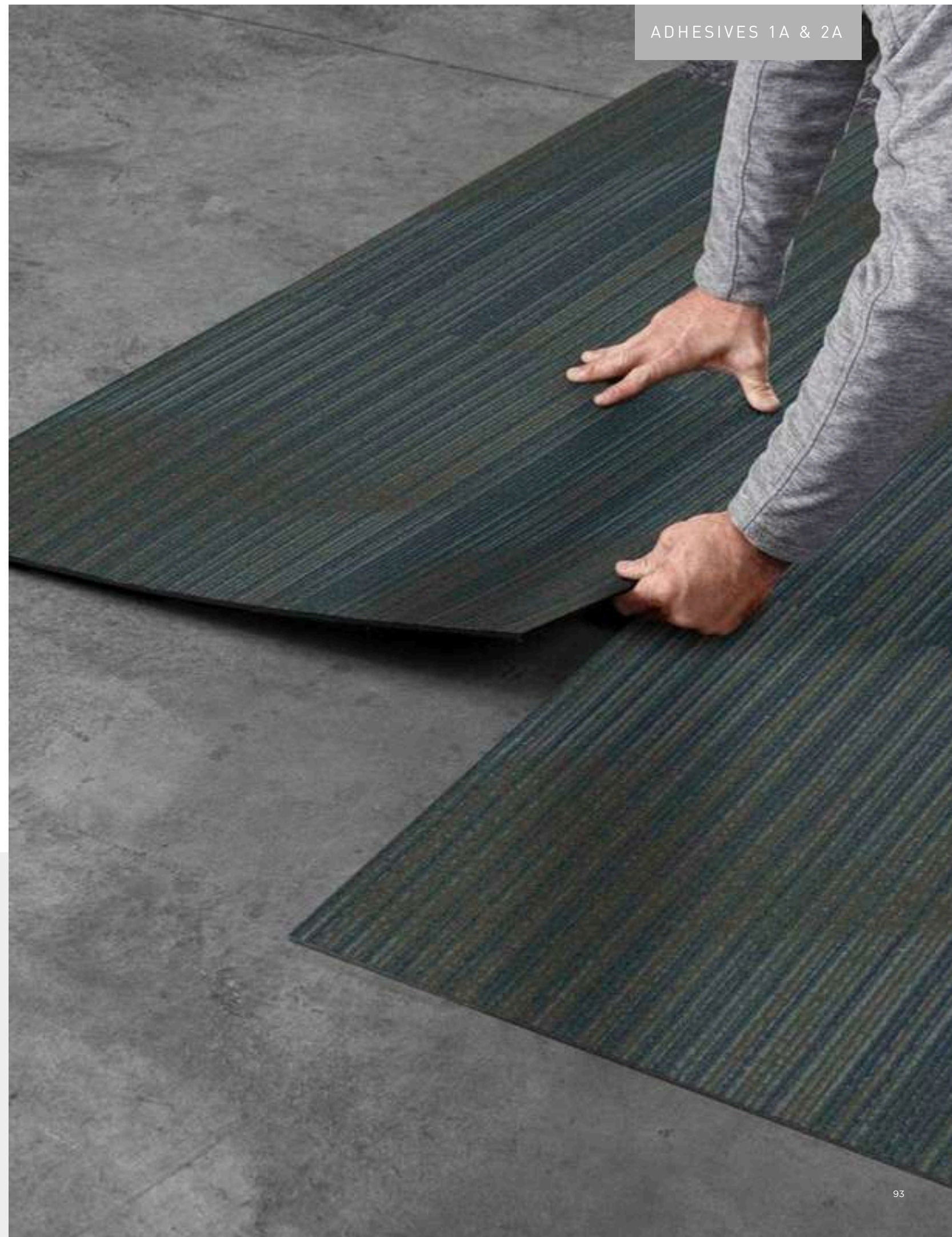
COMMERCIALON® PREMIUM MODULAR TILE AND LVT ADHESIVE

- Pressure Sensitive
- Solvent-free
- Environmentally friendly



PREMIUM BROADLOOM CARPET ADHESIVE // A2904 // 1A

NEXUS MODULAR ADHESIVE // A1334 // 2A



## TILETABS® MODULAR CARPET CONNECTORS | NTAB

J+J Flooring's high-tack TileTabs allow installation and replacement of flooring without the use of spread adhesives. With our TileTabs, simply peel, place and press. They are odorless, glue-VOC-free, and eliminate drying time, making your space available for immediate traffic and occupancy.

### STABILITY

TileTabs grip strips provide a low-tack, high-shear boundary layer designed specifically to stabilize the installation and prevent creep in high traffic areas. These are definitely valuable at entry points where TileTabs can be used on J+J Flooring's walk-off modular carpet to make walk-off mats that can be placed over hard surfaces like stone, tile and terrazzo.

### MOISTURE

TileTabs can be used on J+J Flooring's Nexus Modular and J+J Flooring's 5mm LVT. When used on our Nexus Modular or our 5mm LVT, with our Commercialon Premium Sealer, it will perform in elevated RH slabs up to 99% and a pH of 11.

### DESIGN & COLOR

TileTabs opens up a world of design possibilities like assembling carpet tiles into functional area rugs. With TileTabs, you're not locked into permanent wall-to-wall carpet solutions, but rather free to explore inspiring color and design combinations for a permanent or temporary new look.

### ENVIRONMENTAL

With J+J Flooring's TileTabs system less is more: less mess and less waste means a reduced environmental footprint. TileTabs eliminate the need for cumbersome materials and tools like wet adhesive spreads thus eliminating harmful VOCs from the installation process.



PRICING | AIR FORCE | CONTRACT #FA800323C0004 | 1/19/26 - 1/18/27

ORGANIC SMALL SCALE TILE & PLANK   1"-12"	STYLE #	STYLE NAME	DIMENSIONS	PRICE	CUSHION OPTION	TITANBAC
20S-T	7587	Fractured Plaid Modular Tile	24x24	\$31.77	\$37.27	-
30S-T	7718	Obsidian Modular Tile	24x24	\$37.83	\$43.33	-
10S-P	7602	Adapt Plank	18x36	\$25.76	\$31.26	-
20S-P	7081	Boucle Plank	12x48	\$27.11	\$32.61	-

ORGANIC MEDIUM SCALE TILE & PLANK   12"-18"	STYLE #	STYLE NAME	DIMENSIONS	PRICE	CUSHION OPTION	TITANBAC
10M-T	7096	Intrinsic Modular	24x24	\$16.20	\$21.70	-
20M-T	7586	Twill Weave Modular	24x24	\$31.77	\$37.27	-
30M-T	7592V	Serene Modular	24x24	\$29.25	\$34.75	-
30M-P	7030	Etched Plank	18x36	\$28.54	\$34.04	-

ORGANIC MEDIUM SCALE TILE & PLANK   18" +	STYLE #	STYLE NAME	DIMENSIONS	PRICE	CUSHION OPTION	TITANBAC
10L-T	7685	Reveal Modular	24x24	\$21.48	\$26.98	-
20L-T	7571	Herbalist Modular	24x24	\$22.79	\$28.29	-
30L-T	7593V	Tranquil Modular	24x24	\$29.25	\$34.75	-
10L-P	7083	Tweed Plank	12x48	\$27.11	\$32.61	-
20L-P	7684	Reverie Plank	12x48	\$26.02	\$31.52	-
30L-P	7062	Organic Raku Plank	18x36	\$29.26	\$34.76	-

RANDOM PATTERN TILE & PLANK	STYLE #	STYLE NAME	DIMENSIONS	PRICE	CUSHION OPTION	TITANBAC
10CR-T	7246	Impulse III Modular Tile	24x24	\$22.19	\$27.69	-
20CR-T	7037	Passages Modular Tile	24x24	\$18.22	\$23.72	-
30CR-T	7099	Craftwork Modular Tile	24x24	\$37.59	\$43.09	-
10CR-P	7600	Advance Plank	18x36	\$25.76	\$31.26	-
20CR-P	7480	Cumulus	18x36	\$26.14	\$31.64	-
30CR-P	7479	Color Zone	18x36	\$28.41	\$33.91	-

ORGANIC ROLL OPTION	STYLE #	STYLE NAME	DIMENSIONS	PRICE	CUSHION OPTION	TITANBAC
R-Small (OS)	2433	Impulse III Broadloom	12'	\$13.70	\$19.20	\$15.70
R-MED (OM)	3081	Boucle Broadloom	12'	\$20.10	\$25.60	\$22.10
R-LG (OL)	3037	Passages 26 Broadloom	12'	\$14.02	\$19.52	\$16.02

GEOMETRIC SMALL SCALE TILE & PLANK   1"-12"	STYLE #	STYLE NAME	DIMENSIONS	PRICE	CUSHION OPTION	TITANBAC
5GS-T	7025	Fiction Modular Tile	24x24	\$24.20	\$29.70	-
6GS-T	7202	City Blocks Modular Tile	24x24	\$22.07	\$27.57	-
5GS-P	7084	Narrative II Plank	12x48	\$24.57	\$30.07	-
6GS-P	7478	Zephyr Plank	18x36	\$26.14	\$31.64	-

GEOMETRIC MEDIUM SCALE TILE & PLANK   12"-18"	STYLE #	STYLE NAME	DIMENSIONS	PRICE	CUSHION OPTION	TITANBAC
5GS-T	7025	Fiction Modular Tile	24x24	\$24.20	\$29.70	-
6GS-T	7202	City Blocks Modular Tile	24x24	\$22.07	\$27.57	-
5GS-P	7084	Narrative II Plank	12x48	\$24.57	\$30.07	-
6GS-P	7478	Zephyr Plank	18x36	\$26.14	\$31.64	-

GEOMETRIC LARGE SCALE TILE & PLANK   18" +	STYLE #	STYLE NAME	DIMENSIONS	PRICE	CUSHION OPTION	TITANBAC
4GL-T	7072	Well Versed Modular Tile	24x24	\$20.02	\$25.52	-
6GL-T	7074	Elevated Modular Tile	24x24	\$21.66	\$27.16	-
4GL-P	7621	Journey Plank	18x36	\$20.02	\$25.52	-
6GL-P	7064	Outfitter Plank	18x36	\$16.20	\$21.70	-

RANDOM PATTERN TILE & PLANK	STYLE #	STYLE NAME	DIMENSIONS	PRICE	CUSHION OPTION	TITANBAC
4GCR-T	7438	Vertex Modular Tile	24x24	\$15.99	\$21.49	-
5GCR-T	7199	Chromatic Modular Tile	24x24	\$37.59	\$43.09	-
6GCR-T	7479	Color Zone Modular Tile	24x24	\$28.41	\$33.91	-
4GCR-P	7914	Jack Plank	12x48	\$20.18	\$25.68	-
5GCR-P	7071	Impromptu Plank	12x48	\$24.19	\$29.69	-
6GCR-P	7600	Advance Plank	18x36	\$25.76	\$31.26	-

GEOMETRIC ROLL OPTION	STYLE #	STYLE NAME	DIMENSIONS	PRICE	CUSHION OPTION	TITANBAC
R-Small (GS)	2439	Vertex 26 Broadloom	12'	\$11.91	\$17.41	\$13.91

COORDINATING PRODUCTS	STYLE #	STYLE NAME	DIMENSIONS	PRICE	CUSHION OPTION	TITANBAC
8CT/Heathered-Tweed	7037	Passages Modular	24x24	\$18.22	\$23.72	-
9CW/Walk-Off	7069/7070	Incognito	24x24	\$38.19	n/a	-

ADHESIVES	STYLE #	STYLE NAME	DIMENSIONS	PRICE	COVERAGE
1A	A2904	Premium Carpet Adhesive (Broadloom)	4-Gallon Pail	\$53.65	40 SY
2A	A1334	Nexus Modular Adhesive	4-Gallon Pail	\$145.80	120 SY
3A	NTAB	Tile Tabs Modular Carpet Connectors Nexus	Box	\$145.80	120 SY

All orders must be sent to [contract.team@engineeredfloors.com](mailto:contract.team@engineeredfloors.com). Must include: Ordering DoDAAC, Ship To DoDAAC, and Contract Number. (This information is found on the PO issued by the Air Force to the FC, unless GPC transaction, then need Base, GPC Holder name)



CONTRACT #FA800323C0004

CONTRACT TEAM

P: 800 241 4586

E: USAF@ENGINEEREDFLOORS.COM



P.O. BOX 2207  
DALTON, GA 30722  
P 800 241 4586  
JJFLOORING.COM