

Digital

kinetex

24"x24" MODULAR



FLOORING

Digital



INSPIRATION

Infusing technology with the creative design process, Kinetex offers Digital - an algorithm of fractal patterning- an artwork of filtered pixelation. Colorful infusions of organic geometrics bring a balance of form and function across 24"x24" tiles. Kinetex's High-Def Color Technology™ offers a vibrant pattern and dimensional design in a crisp color palette of 13 contemporary colorways designed to energize and uplift any workspace.

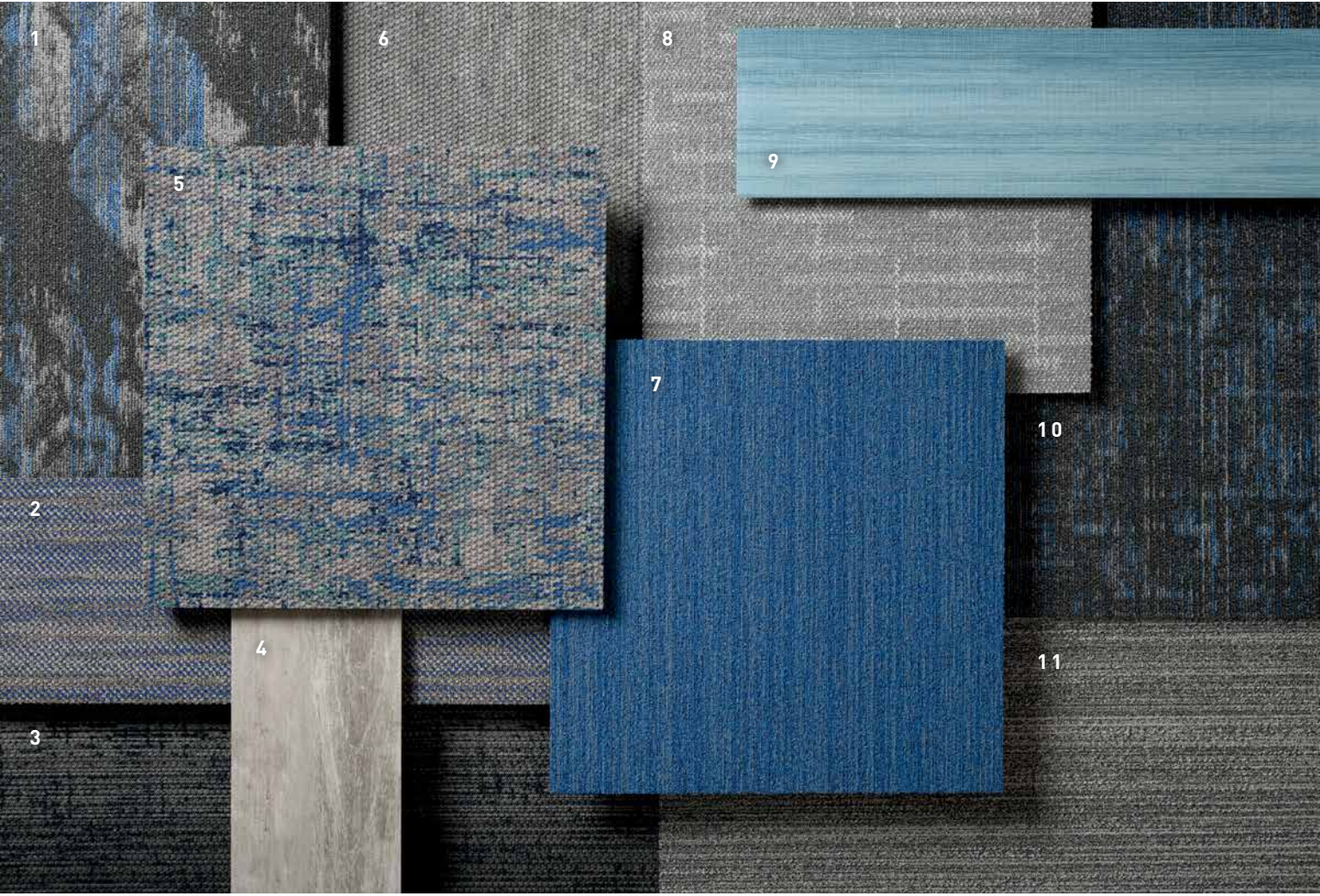


[cover] DIGITAL // MAINFRAME // ashlar
[right] DIGITAL // ORBIT // ashlar









COORDINATES

Beyond the beauty of individual products, our flooring coordinates effortlessly across all of our product platforms - modular carpet tile, broadloom, LVT and Kinetex textile composite flooring. This offering enables you to blend a range of designs with tonal simplicity to create palettes that reflect the demands of each unique space.

1. **ADVANCE** // 7600 // 3275 Royal Path // Modular

2. **TWEED** // 7083 // 2987 Selva // Modular

3. **SOUNDTRACK** // 1847 // 3019 Music // Kinetex

4. **POWER PLAY** // V5019 + V5020 // 1086 Influence // LVT

5. **DIGITAL** // 1859 // 3573 Zone // Kinetex

6. **STRATA** // 1826 // 1854 Silt // Kinetex

7. **COLOR ZONE** // 7479 // 3370 Cobalt // Modular

8. **MADRAS** // 7065 // 2400 Flocked // Modular

9. **MAKE YOUR MARK** // V5012 + V5013 // 1066 Sapphire // LVT

10. **ADAPT** // 7602 // 3275 Royal Path // Modular

11. **ZEPHYR** // 7478 // 3366 Planetary // Modular

DIGITAL // ZONE // brick
COLOR ZONE // COBALT // monolithic



COORDINATES

Beyond the beauty of individual products, our flooring coordinates effortlessly across all of our product platforms - modular carpet tile, broadloom, LVT and Kinetex textile composite flooring. This offering enables you to blend a range of designs with tonal simplicity to create palettes that reflect the demands of each unique space.

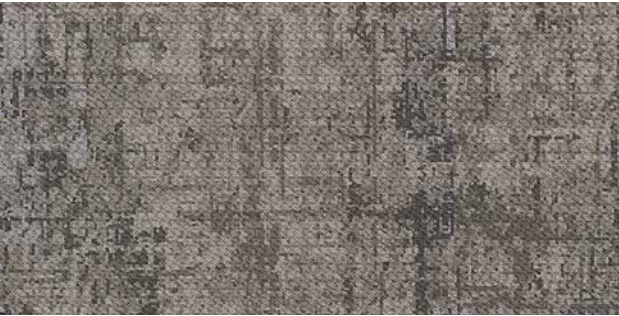
- 1. PROPEL II // 1817 // 1707 Advance // Kinetex
- 2. ADVANCE // 7600 // 3273 Light Beam // Modular
- 3. DIGITAL // 1859 //3577 Tour // Kinetex
- 4. ALLOY // V5008 // 1050 Union // LVT
- 5. METAMORPHIC // 7717 // 2960 Feldspar // Modular
- 6. ADAPT // 7602 // 3270 Warm Beam // Modular

- 7. TIMELESS // V5011 // 1009 Heritage // LVT
- 8. TWILL WEAVE // 7586 // 2874 Mills // Modular
- 9. LEGEND // V5009 + V5010 // 1059 Fiction // LVT
- 10. UMBRA II // 1819 // 1764 Shadow // Kinetex
- 11. TRANQUIL // 6593 + 7593 // 3236 Sandstone // Modular + Broadloom

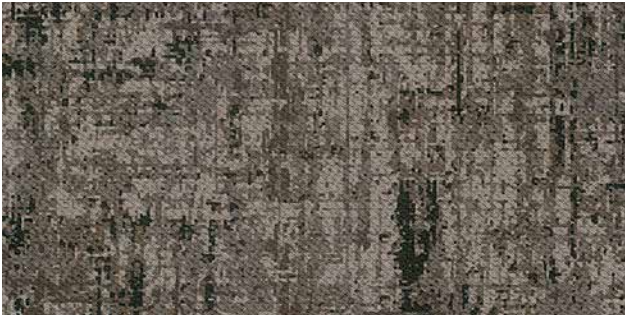


DIGITAL // TOUR // brick
LEGEND // FICTION // 1/2 drop
[back cover] DIGITAL // JOURNEY // brick

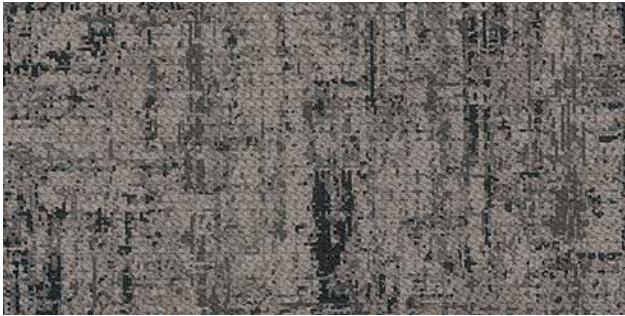
Digital 24"x24" MODULAR



COLOR 3579
orbit



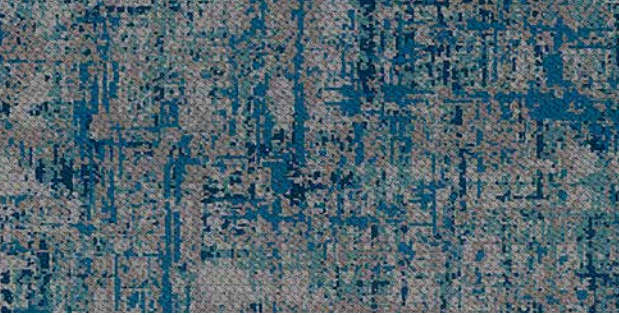
COLOR 3577
tour



COLOR 3580
range



COLOR 3575
turning



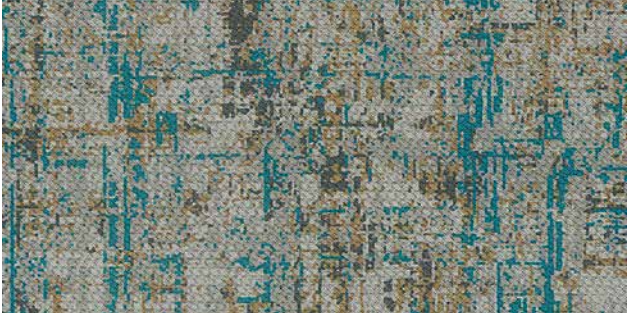
COLOR 3573
zone



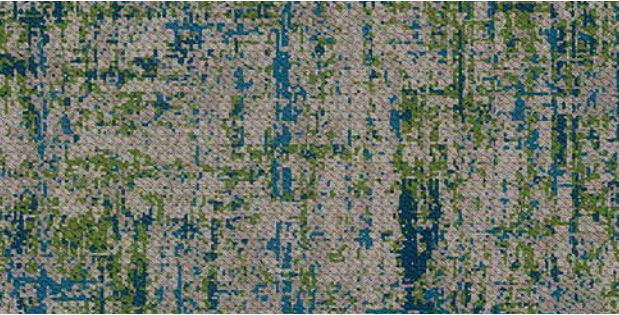
COLOR 3578
field



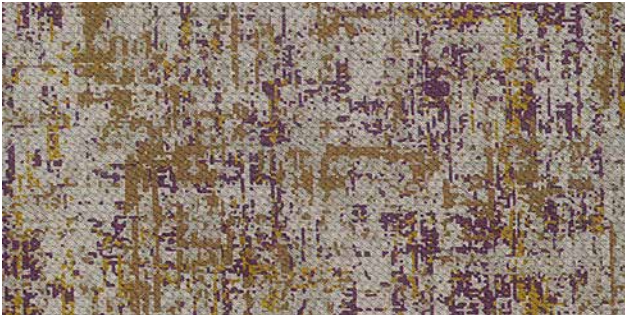
COLOR 3581
chain



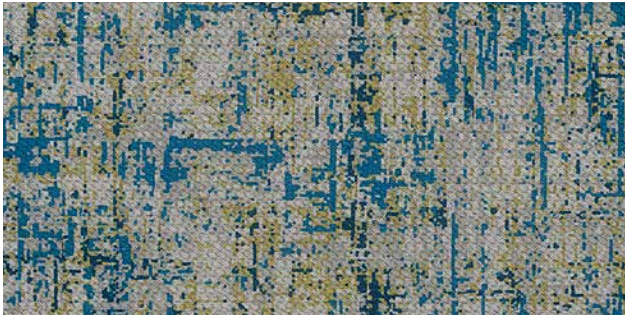
COLOR 3585
boundary



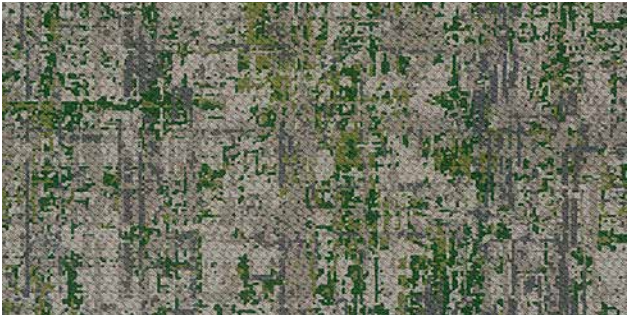
COLOR 3574
bounds



COLOR 3576
journey



COLOR 3582
compass



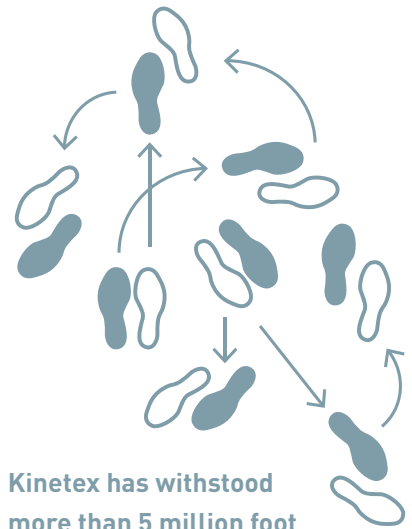
COLOR 3584
region



COLOR 3571
mainframe

1. DURABILITY

Kinetex delivers enduring performance, year after year. One of the most thoroughly tested flooring products on the market, it has outstanding dimensional stability and unparalleled crush resistance.

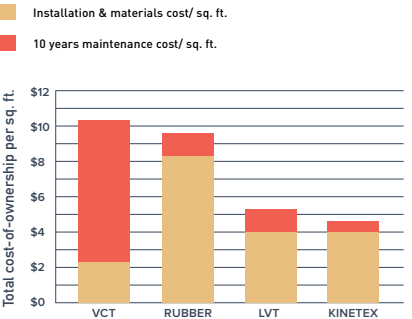


Kinetex has withstood more than 5 million foot traffic events.

2. MAINTENANCE

Tough to wear out, easy to maintain. With vacuuming and encapsulation cleaning, Kinetex looks like new, year after year. Thanks to a lightweight face construction, Kinetex retains less water than carpet and dries faster. It is easily sanitized and resists the most challenging staining agents.

Life Cycle Costs: INSTALLATION AND MAINTENANCE



3. MOISTURE TOLERANCE

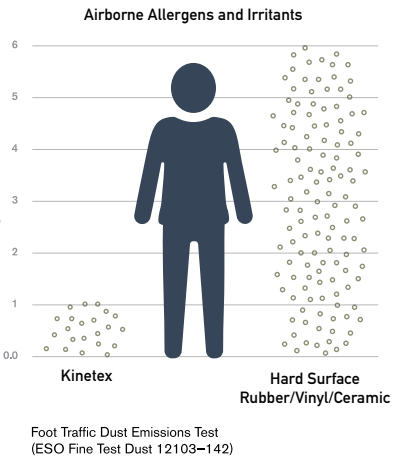
The most common subfloor, concrete, can release excessive moisture and destroy floor covering systems—unless costly precautions are taken before installation. But moisture mitigation isn’t necessary with Kinetex; its breathable nature allows moisture to pass through its backing, instead of trapping it underneath. Kinetex textile composite flooring will perform in elevated RH slabs up to 100%.



4. HEALTH

Kinetex minimizes air particulates that trigger allergies and cause infection. It easily surpasses California’s 01350 requirements— the most popular U.S. standard for evaluating and restricting VOC emissions indoors.

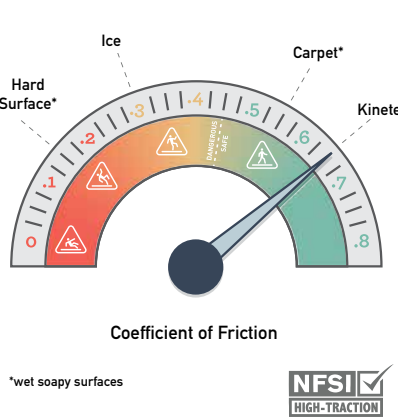
Easy Breathing



5. SAFETY

Kinetex is the only wall-to-wall textile floor covering certified as High-Traction by the National Floor Safety Institute. Its innovative construction creates one of the most slip-resistant flooring surfaces ever tested—wet or dry—to prevent falls before they happen.

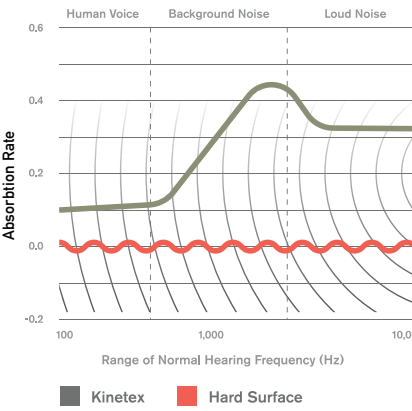
Gaining Traction



6. ACOUSTICS

Kinetex delivers unparalleled acoustic performance, with one of the highest Noise Reduction Coefficients (NRC) and Impact Insulation Classifications (IIC) ratings of any commercial flooring product.

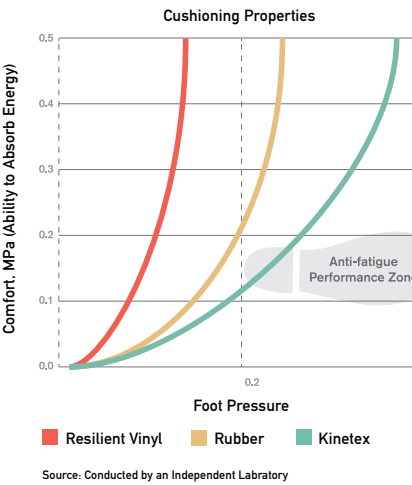
Keeping Quiet



7. COMFORT

Kinetex, a soft textile surface with a high-density backing, has exceptional anti-fatigue properties and minimal rolling resistance. Because it can absorb energy, Kinetex has the potential to reduce repetitive foot stress injuries and other injuries related to standing and frequent movement from place to place.

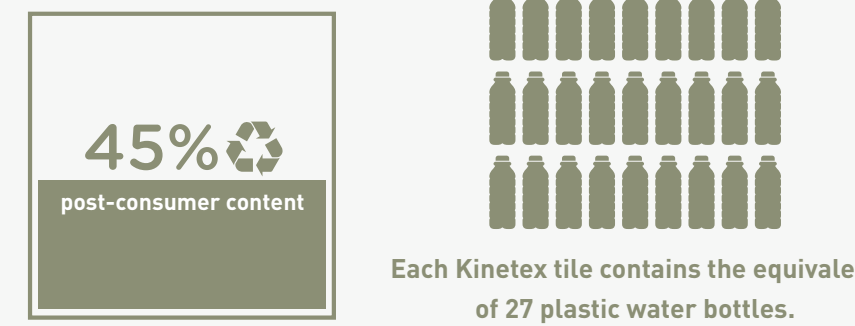
Step-by-Step Support



8. SUSTAINABILITY

Made with 45% post-consumer recycled content, each Kinetex tile contains the equivalent of 27 used water bottles. This dematerialized flooring product and its longer life mean that Kinetex has a much smaller environmental footprint than other commercial flooring options. Kinetex is NSF/ANSI-140 Platinum certified (the industry-leading standard for sustainability) and has a Red List Free DECLARE label. Furthermore, Kinetex has been verified as a Carbon Neutral product.

Second Chances



KINETEX INSTALLATION

Installing Kinetex is as easy as traditional modular carpet, however special attention should be applied until installers gain experience with module placement. Installers should perform site and material conditioning, surface preparation, and concrete pH and moisture testing as if they were installing J+J Flooring carpet modules. Because it is such a lightweight material the modules cut very easily, reducing installation time. Kinetex uses J+J Flooring’s proven adhesive systems with lifetime performance warranties.

Kinetex Adhesive

Kinetex Adhesive is formulated for Kinetex textile composite flooring products and is built to bond the textile composite to the properly prepared substrates for the life of the installation. Products with Kinetex Adhesive will perform in elevated RH slabs up to 100%.

PreFix® (optional)

PreFix includes a release liner that easily peels away to reveal pre-applied adhesive that securely anchors the Kinetex module in place. Products with PreFix will perform in elevated RH slabs up to 100%, allowing the flooring to be installed without costly moisture mitigation. PreFix offers a quick installation system and it can be added to all Kinetex products as an optional adhesive.

Please see the Kinetex installation instructions for full installation details.

TECHNOLOGIES

High-Def Color Technology
J+J Flooring achieves next-generation innovation with the development of High-Def Color Technology. This latest engineering capability provides Kinetex products with crisp color, vibrant patterns and dimensional design that rivals that of soft surface flooring.



WARRANTIES

We stand behind every aspect of Kinetex and extend certain lifetime warranties. Each warranty is covered for the useful life of the product, provided that installation and maintenance is in accordance with J+J Flooring’s Kinetex Installation instructions.

Wear Layer Warranties

Product Performance	Colorfastness to Light & Crocking	Stain Removal	Static Protection
Lifetime	Lifetime	Lifetime	Lifetime

Backing Warranties

Protection from Edge Ravel	Protection from Delamination Failure	Dimensional Stability
Lifetime	Lifetime	Lifetime



©2023 J+J Flooring Group, LLC - This unique design is protected under the U.S. Copyright Act of 1976. Any unauthorized copying or duplication of this design constitutes copyright infringement in violation of federal law. Due to the unique visual characteristics of modular carpets, pattern repeats and pattern run-off seams may appear more noticeable than in broadloom carpets. Such visual characteristics do not constitute a manufacturing defect, and as such, should be considered when selecting modular carpet and its installation.

These photographs are representations of the installation for this modular product. Your modular installation may look different than these photos depending upon individual tile placement, lighting, and overall space layout, including furnishings. Final tile placement and the resulting visual is thus the customer’s, and not J+J Flooring’s responsibility.

*NRC rating is a measure of the effectiveness of a material in absorbing sound. The higher the NRC rating, the greater the ability of the flooring product to absorb airborne noise. Independent laboratory testing of Kinetex has shown an average NRC rating of 0.30 (bare concrete flooring will typically provide a NRC Rating of 0.015).

**IIC is a rating of the insulation from impact noise. The higher the IIC rating, the greater the sound insulation. Independent laboratory testing of Kinetex has shown an average IIC Rating of .64 (bare concrete flooring will typically provide an IIC Rating of 34) NOTE: Test results and testing laboratory will vary, and the above information is not guaranteed.

STYLE	Digital 1859 modular
WEAR LAYER	solution dyed polyester - applied pattern (produced with High-Def Color Technology™)
BACKING	polyester felt cushion
TOTAL WEIGHT (nominal average)	4.5 oz - 5.2 oz/square foot
TOTAL THICKNESS (nominal average)	0.205 inches
DIMENSIONS	24 x 24 inch modules
PACKAGING	18 modules per box – 72 square feet
ENVIRONMENTAL ATTRIBUTES	
CARBON FOOTPRINT	carbon neutral
RED LIST FREE	DECLARE label
RECYCLED CONTENT	45% (post consumer)
LEED SCORECARD	IEQ 4.1 and IEQ 4.3
NSF/ANSI 140 CERTIFICATION	platinum
TESTING	
FLOORING RADIANT PANEL	class 1
SMOKE DENSITY	less than 450 (flaming & non-flaming)
ELECTROSTATIC PROPENSITY	less than 3.0 kv
COLORFASTNESS TO LIGHT	rating of 4.0 or greater
COLORFASTNESS TO CROCKING	rating of 4.0 or greater
WATER REPELLENCY	rating of 4.0 or greater
APPEARANCE RETENTION	4.0 or greater
SLIP RESISTANCE	Complies with ADA Guidelines for level surface NFSI Certified High-Traction
THERMAL INSULATION	0.73
NOISE REDUCTION COEFFICIENT	NRC Rating: 0.30*
IMPACT INSULATION CLASSIFICATION	IIC Rating: 64**
STAIN RESISTANCE	resists most challenging stains
INDOOR AIR QUALITY CERTIFICATION	CRI Green Label Plus™

ADHESIVE	Kinetex adhesive (full-spread pressure-sensitive) (optional) PreFix® pre-applied releasable adhesive
----------	---

INSTALLATION METHODS



kinetex

24"x24" MODULAR



P.O. BOX 2207
DALTON, GA 30722
P 800 241 4586
F 706 275 4433
JJFLOORING.COM
JX3223M06

carpet | lvt | kinetex



FLOORING
A DIVISION OF ENGINEERED FLOORS