

kinetex

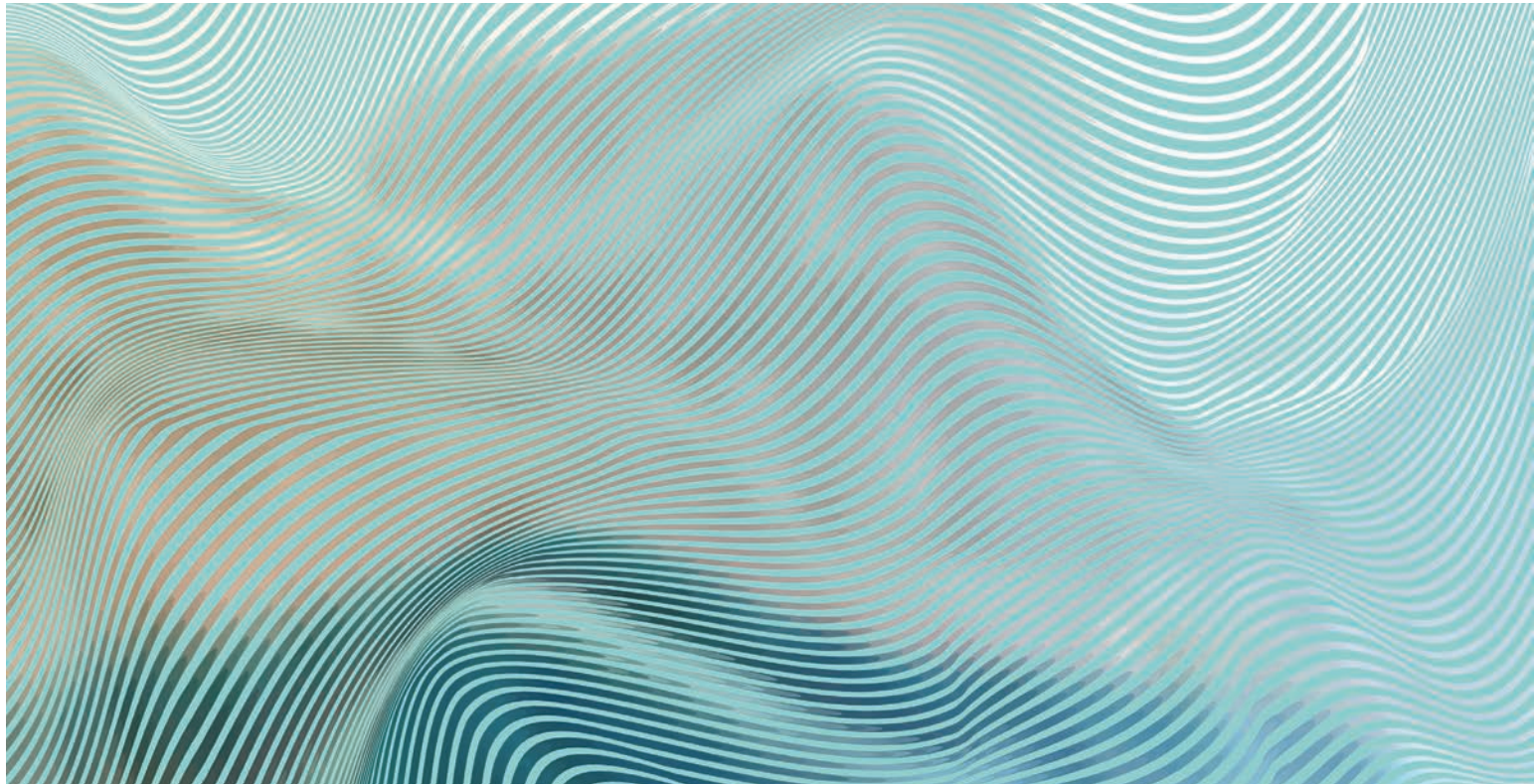
24" x 24" MODULAR

Moiré



FLOORING

Moiré



INSPIRATION

When patterns collide, an unexpected curiosity takes place – swirling bands of iridescent waves of pattern are revealed – a trick of light creating something new and prismatic.

The new Kinetex style, Moiré utilizes this effect to create a subtle wavy pattern in warm to cool tones that vary in its graphic from bold to delicate, with an accent line to complement this radial illusion. Available in 24 colorways in 24” x 24” tiles.



[front cover] MOIRÉ // PATTERN // stair step
MOIRÉ // PATTERN, TRANSPARENT // stair step



MOIRÉ // SUPERPOSING // quarter turn



MOIRÉ // SUPERPOSING // quarter turn



MOIRÉ // ART // quarter turn



MOIRÉ // ART // quarter turn



MOIRÉ // PATTERN, OBJECTS // quarter turn



MOIRÉ // BROADBAND // ashlar // RECHARGE // COMFORT // ashlar



COORDINATES

Beyond the beauty of individual products, our flooring coordinates effortlessly across all of our product platforms—modular carpet tile, broadloom, LVT and Kinetex textile composite flooring. This offering enables you to blend a range of designs with tonal simplicity to create palettes that reflect the demands of each unique space.

1. BOUCLÉ II // 7081 + 3081 // 3650 Facing // Modular + Broadloom

2. NARRATIVE II // 7084 // 1780 Cliff-Hanger // Modular

3. STRATA // 1826 // 1848 Feldspar // Kinetex

4. MOIRÉ // 1862 // 115 Broadband // Kinetex

5. RECHARGE // V5054 + V5055 // 1179 Comfort // LVT

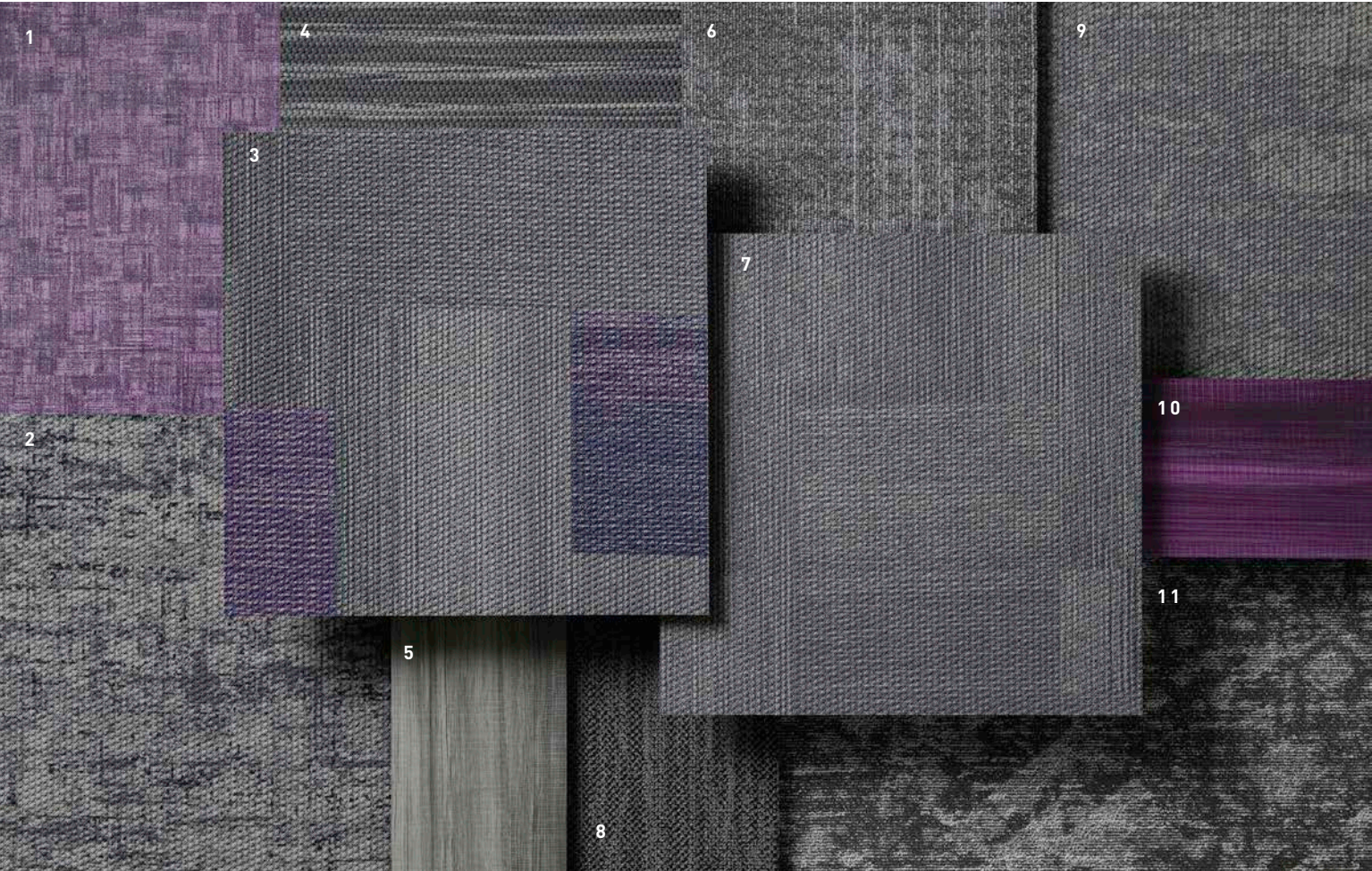
6. STRUCTURE // 20100 // 3397 Bracket // Broadloom

7. RETREAT // V5056 + V5057 // 1187 Sense // LVT

8. LEGEND // V5009 + V5010 // 1057 Tale // LVT

9. PROVISION // 1831 // 2277 Procurement // Kinetex

10. FUNCTION // 7410 // 3397 Bracket // Modular



COORDINATES

Beyond the beauty of individual products, our flooring coordinates effortlessly across all of our product platforms—modular carpet tile, broadloom, LVT and Kinetex textile composite flooring. This offering enables you to blend a range of designs with tonal simplicity to create palettes that reflect the demands of each unique space.

1. STEP BY STEP // V5043 + V5044 // 1124 Violet // LVT

2. DIGITAL // 1859 // 3571 Mainframe // Kinetex

3. MOIRÉ // 1862 // 117 Shape // Kinetex

4. TIMBER // 1825 // 1923 Aspen // Kinetex

5. MAKE YOUR MARK // V5012 + V5013 // 1063 Shadow // LVT

6. ADAPT // 7602 // 3266 Cool Oasis // Modular

7. MOIRÉ // 1862 // 100 Pattern // Kinetex

8. TWEED // 7083 // 2992 Flannel // Modular

9. NETWORK // 1842 // 2851 Database // Kinetex

10. MAKE YOUR MARK // V5012 + V5013 // 1071 Iris // LVT

11. ADJUST // 7601 // 3268 Crystal Oasis // Modular



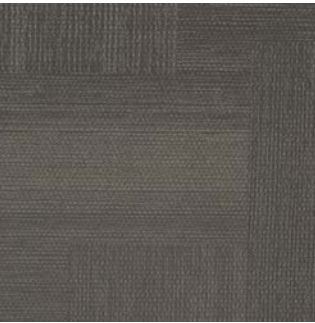
MOIRÉ // SHAPE // ashlar // MAKE YOUR MARK // IRIS // ashlar
(back cover) MOIRÉ // BLUR // stair step

Moiré

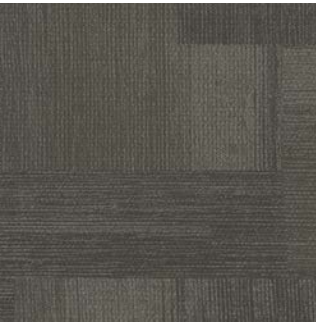
24" x 24" MODULAR



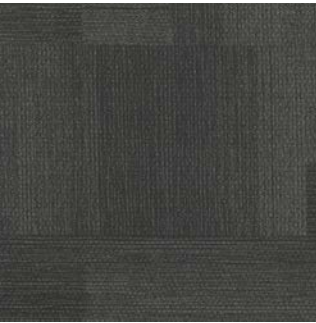
COLOR 100
pattern
a neutral that shares the same base with
the colors indicated with an *



COLOR 102
moving



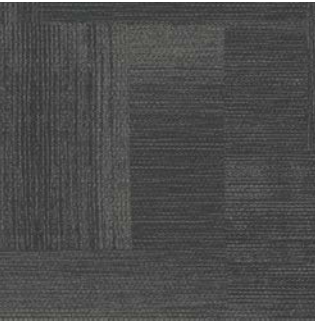
COLOR 103
optical



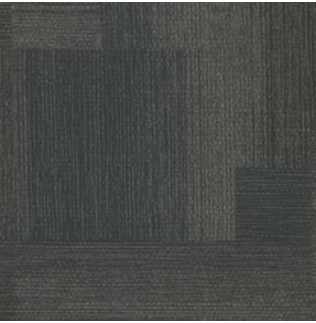
COLOR 104
physics



COLOR 105
motion



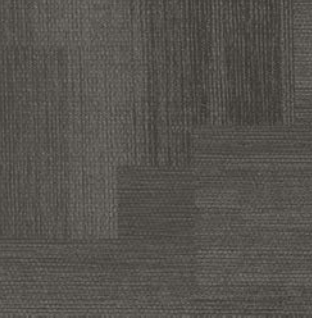
COLOR 106
blur



COLOR 107
slight



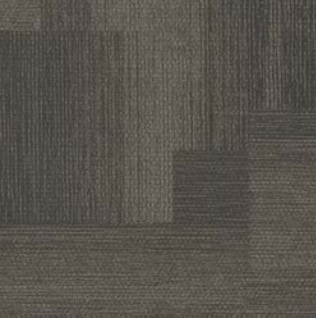
COLOR 108
superposing



COLOR 109
artifact



COLOR 110
mathematics



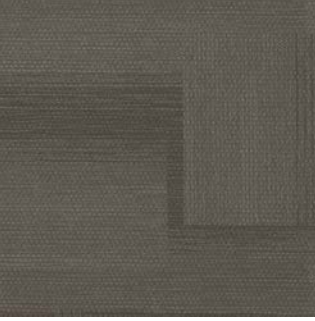
COLOR 111
halftone



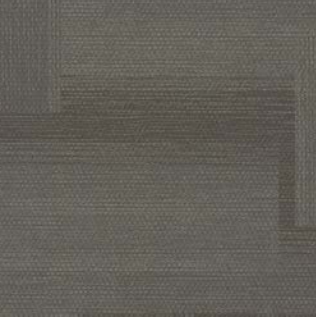
COLOR 112
speedup



COLOR 113
drawing



COLOR 114
scanning



COLOR 115
broadband



COLOR 124*
art



COLOR 118*
universal



COLOR 122*
transparent



COLOR 116*
layers



COLOR 117*
shape



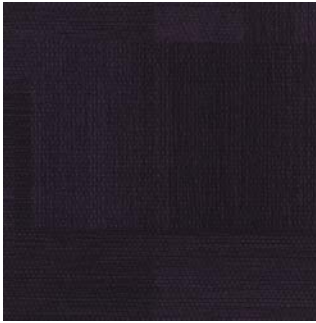
COLOR 126
objects



COLOR 125
phase



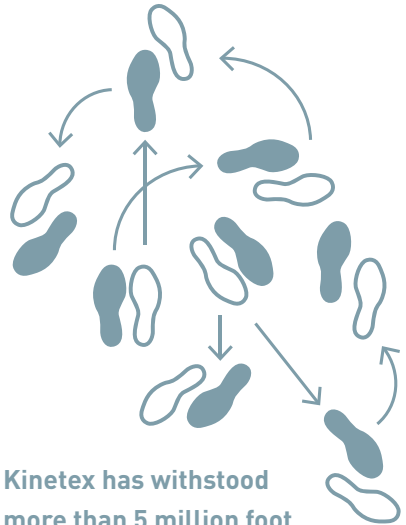
COLOR 119
hidden



COLOR 120
graphics

1. DURABILITY

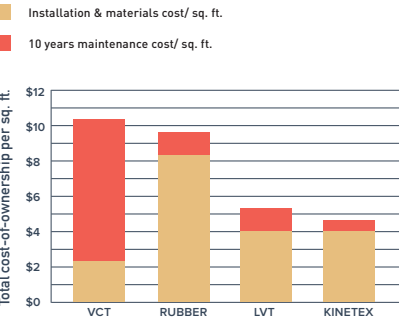
Kinetex delivers enduring performance, year after year. One of the most thoroughly tested flooring products on the market, it has outstanding dimensional stability and unparalleled crush resistance.



2. MAINTENANCE

Tough to wear out, easy to maintain. With vacuuming and encapsulation cleaning, Kinetex looks like new, year after year. Thanks to a lightweight face construction, Kinetex retains less water than carpet and dries faster. It is easily sanitized and resists the most challenging staining agents.

Life Cycle Costs:
INSTALLATION AND MAINTENANCE



3. MOISTURE TOLERANCE

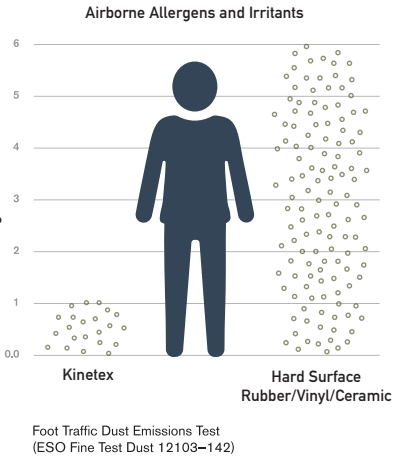
The most common subfloor, concrete, can release excessive moisture and destroy floor covering systems—unless costly precautions are taken before installation. But moisture mitigation isn't necessary with Kinetex; its breathable nature allows moisture to pass through its backing, instead of trapping it underneath. Kinetex textile composite flooring will perform in elevated RH slabs up to 100%.



4. HEALTH

Kinetex minimizes air particulates that trigger allergies and cause infection. It easily surpasses California's 01350 requirements— the most popular U.S. standard for evaluating and restricting VOC emissions indoors.

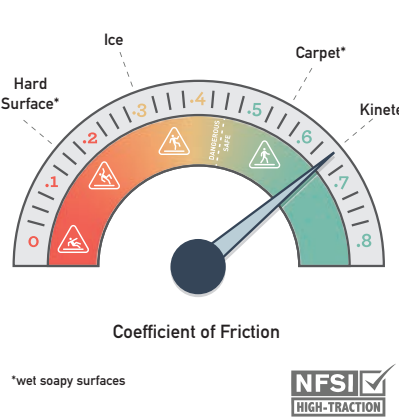
Easy Breathing



5. SAFETY

Kinetex is the only wall-to-wall textile floor covering certified as High-Traction by the National Floor Safety Institute. Its innovative construction creates one of the most slip-resistant flooring surfaces ever tested—wet or dry—to prevent falls before they happen.

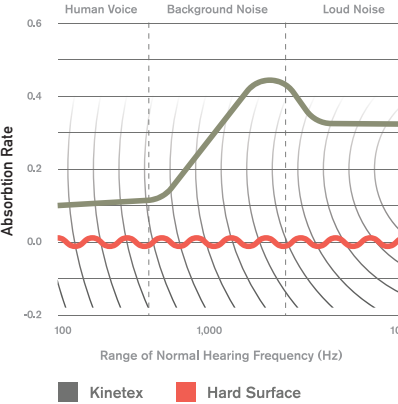
Gaining Traction



6. ACOUSTICS

Kinetex delivers unparalleled acoustic performance, with one of the highest Noise Reduction Coefficients (NRC) and Impact Insulation Classifications (IIC) ratings of any commercial flooring product.

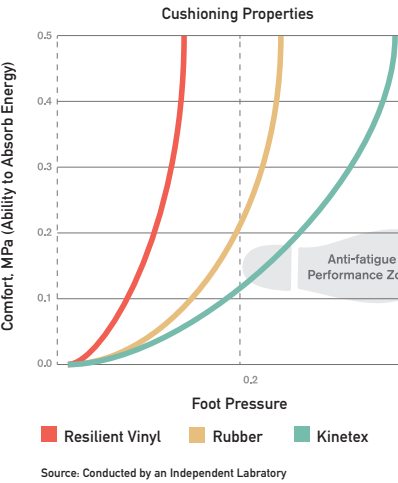
Keeping Quiet



7. COMFORT

Kinetex, a soft textile surface with a high-density backing, has exceptional anti-fatigue properties and minimal rolling resistance. Because it can absorb energy, Kinetex has the potential to reduce repetitive foot stress injuries and other injuries related to standing and frequent movement from place to place.

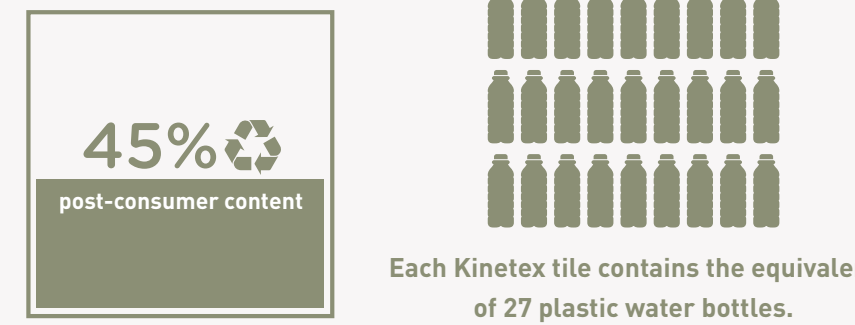
Step-by-Step Support



8. SUSTAINABILITY

Made with 45% post-consumer recycled content, each Kinetex tile contains the equivalent of 27 used water bottles. This dematerialized flooring product and its longer life mean that Kinetex has a much smaller environmental footprint than other commercial flooring options. Kinetex is NSF/ANSI-140 Platinum certified (the industry-leading standard for sustainability) and has a Red List Free DECLARE label. Furthermore, Kinetex has been verified as a Carbon Neutral product.

Second Chances



KINETEX INSTALLATION

Although Kinetex is a modular tile, it does not install like traditional modular carpet. Installers should carefully read the full Kinetex installation instructions. Special attention should be applied until installers gain experience with module placement. Installers should perform site and material conditioning and surface preparation, and there should be no condensation or standing water at the time of installation. Kinetex material is lightweight and is easy to cut, which reduces installation time. Kinetex uses J+J Flooring's proven adhesive system with a lifetime performance warranty.

Kinetex Adhesive

Kinetex Adhesive is formulated for Kinetex textile composite flooring products and is built to bond the textile composite to the properly prepared substrates for the life of the installation. Products with Kinetex Adhesive will perform in elevated RH slabs up to 100%.

Please see the Kinetex installation instructions for full installation details.

TECHNOLOGIES

High-Def Color Technology
J+J Flooring achieves next-generation innovation with the development of High-Def Color Technology. This latest engineering capability provides Kinetex products with crisp color, vibrant patterns and dimensional design that rivals that of soft surface flooring.



WARRANTIES

We stand behind every aspect of Kinetex and extend certain lifetime warranties. Each warranty is covered for the useful life of the product, provided that installation and maintenance is in accordance with J+J Flooring’s Kinetex Installation instructions.

Wear Layer Warranties

| | | | |
|---------------------|-----------------------------------|---------------|-------------------|
| Product Performance | Colorfastness to Light & Crocking | Stain Removal | Static Protection |
| Lifetime | Lifetime | Lifetime | Lifetime |

Backing Warranties

| | | |
|----------------------------|--------------------------------------|-----------------------|
| Protection from Edge Ravel | Protection from Delamination Failure | Dimensional Stability |
| Lifetime | Lifetime | Lifetime |



©2025 J+J Flooring Group, LLC - This unique design is protected under the U.S. Copyright Act of 1976. Any unauthorized copying or duplication of this design constitutes copyright infringement in violation of federal law. Due to the unique visual characteristics of modular carpets, pattern repeats and pattern run-off seams may appear more noticeable than in broadloom carpets. Such visual characteristics do not constitute a manufacturing defect, and as such, should be considered when selecting modular carpet and its installation.

These photographs are representations of the installation for this modular product. Your modular installation may look different than these photos depending upon individual tile placement, lighting, and overall space layout, including furnishings. Final tile placement and the resulting visual is thus the customer’s, and not J+J Flooring’s responsibility.

*NRC rating is a measure of the effectiveness of a material in absorbing sound. The higher the NRC rating, the greater the ability of the flooring product to absorb airborne noise. Independent laboratory testing of Kinetex has shown an average NRC rating of 0.30 (bare concrete flooring will typically provide a NRC Rating of 0.015).

**IIC is a rating of the insulation from impact noise. The higher the IIC rating, the greater the sound insulation. Independent laboratory testing of Kinetex has shown an average IIC Rating of .64 (bare concrete flooring will typically provide an IIC Rating of 34) NOTE: Test results and testing laboratory will vary, and the above information is not guaranteed.

| | |
|-----------------------------------|--|
| STYLE | Moiré 1862 modular |
| WEAR LAYER | solution dyed polyester - applied pattern (produced with High-Def Color Technology™) |
| BACKING | polyester felt cushion |
| TOTAL WEIGHT (nominal average) | 4.5 oz - 5.2 oz/square foot |
| TOTAL THICKNESS (nominal average) | 0.205 inches |
| DIMENSIONS | 24 x 24 inch modules |
| PACKAGING | 18 modules per box – 72 square feet |
| ENVIRONMENTAL ATTRIBUTES | |
| CARBON FOOTPRINT | carbon neutral |
| RED LIST FREE | DECLARE label |
| RECYCLED CONTENT | 45% (post consumer) |
| LEED SCORECARD | IEQ 4.1 and IEQ 4.3 |
| NSF/ANSI 140 CERTIFICATION | platinum |
| TESTING | |
| FLOORING RADIANT PANEL | class 1 |
| SMOKE DENSITY | less than 450 (flaming & non-flaming) |
| ELECTROSTATIC PROPENSITY | less than 3.0 kv |
| COLORFASTNESS TO LIGHT | rating of 4.0 or greater |
| COLORFASTNESS TO CROCKING | rating of 4.0 or greater |
| WATER REPELLENCY | rating of 4.0 or greater |
| APPEARANCE RETENTION | 4.0 or greater |
| SLIP RESISTANCE | Complies with ADA Guidelines for level surface NFSI Certified High-Traction |
| THERMAL INSULATION | 0.73 |
| NOISE REDUCTION COEFFICIENT | NRC Rating: 0.30* |
| IMPACT INSULATION CLASSIFICATION | IIC Rating: 64** |
| STAIN RESISTANCE | resists most challenging stains |
| INDOOR AIR QUALITY CERTIFICATION | CRI Green Label Plus™ |

| | |
|----------|---|
| ADHESIVE | Kinetex adhesive (full-spread pressure-sensitive) |
|----------|---|

INSTALLATION METHODS



kinetex

24" x 24" MODULAR



P.O. BOX 2207

DALTON, GA 30722

P 800 241 4586

F 706 275 4433

JJFLOORING.COM

MX7625M05

carpet | lvt | kinetex



FLOORING
A DIVISION OF ENGINEERED FLOORS