



Flooring Catalog



Table of Contents

ABOUT US		2
ORGANIC SMALL		4
ORGANIC MEDIUM		12
ORGANIC LARGE		20
ORGANIC RANDOM		32
ORGANIC ROLLS		44
GEOMETRIC SMALL		50
GEOMETRIC MEDIUM		58
GEOMETRIC LARGE		66
GEOMETRIC RANDOM		74
GEOMETRIC ROLLS		84
COORDINATE		86
ADHESIVES		92
PRICING		96



J+J FLOORING

In 1985, the flooring company bearing the name of brothers Robert and Bud Shaw became the first carpet manufacturer to break into the Fortune 500. Mr. Shaw retired from that company in 2006, but in 2009 he decided to come out of retirement and founded Engineered Floors, LLC. Instead of using his past success as a model for growth, Mr. Shaw knew that thriving flooring companies only get that way by doing what others haven't done or what they have deemed impossible. He began fresh with Engineered Floors, building from the ground up under the company promise of "Innovation Reinvented." Mr. Shaw instilled a drive to identify and implement new technologies, streamline production, integrate operations under one roof, and guided the development of Engineered Floors' product and market strategies. Today, under Mr. Shaw's leadership, Engineered Floors has quickly grown to be the third largest carpet manufacturer in the United States and the fastest-growing flooring company in the world.

"ENGINEERED FLOORS HAS QUICKLY GROWN TO BE THE THIRD LARGEST CARPET MANUFACTURER IN THE UNITED STATES AND THE FASTEST-GROWING FLOORING COMPANY IN THE WORLD."

J+J Flooring opened its doors in 1957 and was acquired by Engineered Floors in 2016. As a commercial flooring division of Engineered Floors, we are poised to continue delivering on our goal to shape inspiring commercial spaces through resources, technology and product selections. With modular carpet, broadloom, LVT (luxury vinyl tile) and Kinetex, a textile composite flooring – we provide a range of product solutions to meet the needs of our customers.



FRACTURED PLAID | 7587 | 24" X 24" MODULAR



COLOR 2871
fleck



COLOR 2872
ticking



COLOR 2873
calico



COLOR 2874
mills



COLOR 2875
eyelet



COLOR 2876
gauze



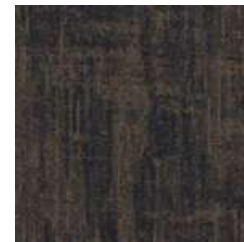
COLOR 2877
felt



COLOR 2878
cloth



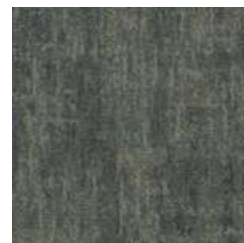
COLOR 2879
percale



COLOR 2880
armure



COLOR 2881
brocade



COLOR 2882
chintz



COLOR 2883
corded



COLOR 2884
plush

Construction	Textured Patterned Loop	Pile Density	14308 oz./y ³ [530.55 kg/m ³]	Standard Adhesive	Commercialon Premium Modular Adhesive
Backing	Nexus® Modular	Pattern Repeat	N/A	Optional Adhesive	TileTabs
Dye Method	Solution Dyed	Gauge	1/10 [3.94 rows/cm]	Standard Warranties	Encore SD Ultima Lifetime Fiber Nexus Modular Lifetime Commercialon Adhesive for Modular Carpet & LVT Lifetime
Fiber Type	Encore® SD Ultima® [with recycled content]	Stitches Per Inch	10 stitches/in [3.94 stitches/cm]	Optional Warranties	Nexus Cushion Modular Lifetime Tile Tabs Nexus Cushion Adhesive
Face Weight	32 oz./sy [1085 grams/ m ²]	Standard Size	24" x 24" approx. [60.96cm x 60.96cm]		

MODULAR
INSTALLATION
METHODS



ashlar



brick



monolithic



quarter turn

CLASSIFICATION:
SEVERE



OBSIDIAN | 7718 | 24" X 24" MODULAR



COLOR 2959
limestone



COLOR 2960
feldspar



COLOR 2961
soapstone



COLOR 2965
quartz



COLOR 2966
marble



COLOR 2967
shale



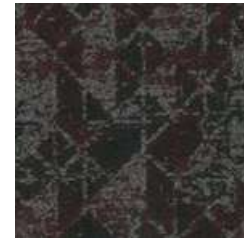
COLOR 2969
sandstone



COLOR 3278
limestone moss



COLOR 3279
feldspar marine



COLOR 3280
soapstone maroon



COLOR 3281
sandstone copper



COLOR 3282
quartz jade



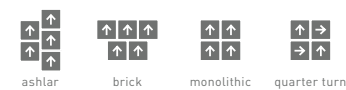
COLOR 3283
marble gold



COLOR 3284
shale ice

Construction	Textured Patterned Loop	Pile Density	14308 oz./y ³ [530.55 kg/m ³]	Standard Adhesive	Commercial Premium Modular Adhesive
Backing	Nexus® Modular	Pattern	N/A	Optional Adhesive	TileTabs
Dye Method	Solution Dyed	Repeat Gauge	1/10 [3.94 rows/cm]	Standard Warranties	Encore SD Ultima Lifetime Fiber Nexus Modular Lifetime Commercial Adhesive for Modular Carpet & LVT Lifetime
Fiber Type	Encore® SD Ultima® [with recycled content]	Stitches Per Inch	10 stitches/in [3.94 stitches/cm]	Optional Warranties	Nexus Cushion Modular Lifetime Tile Tabs Nexus Cushion Adhesive
Face Weight	32 oz./sy [1085 grams/ m ²]	Standard Size	24" x 24" approx. [60.96cm x 60.96cm]		

MODULAR
INSTALLATION
METHODS



CLASSIFICATION:
SEVERE



ADAPT | 7602 | 18" X 36" MODULAR



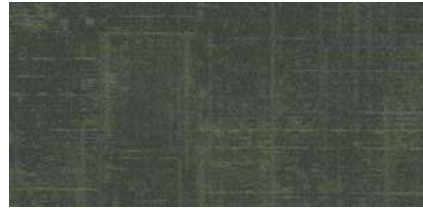
COLOR 3266
cool oasis



COLOR 3267
citrus oasis



COLOR 3268
crystal oasis



COLOR 3269
lime oasis



COLOR 3270
warm beam



COLOR 3271
gold beam



COLOR 3272
azure beam



COLOR 3273
light beam



COLOR 3274
carbon path



COLOR 3275
royal path



COLOR 3276
plum path



COLOR 3277
brick path

Construction	Patterned Loop	Pile Density	9351 oz/y3 (346.74 kg/m3)	Standard Adhesive	Commercial Premium Modular Adhesive
Backing	Nexus® Modular	Pattern Repeat	N/A	Optional Adhesive	TileTabs
Dye Method	Solution Dyed	Gauge	1/12 (4.72 rows/cm)	Standard Warranties	Encore SD Ultima Lifetime Fiber Nexus Modular Lifetime Commercial Adhesive for Modular Carpet & LVT Lifetime
Fiber Type	Encore® SD Ultima® (with recycled content)	Stitches Per Inch	10 stitches/in (3.94 stitches/cm)	Optional Warranties	Nexus Cushion Modular Lifetime
Face Weight	21oz/sy (712 grams/m2)	Standard Size	18" x 36" approx. (45.72cm x 91.44cm)		

MODULAR
INSTALLATION
METHODS



parquet



basketweave



ashlar

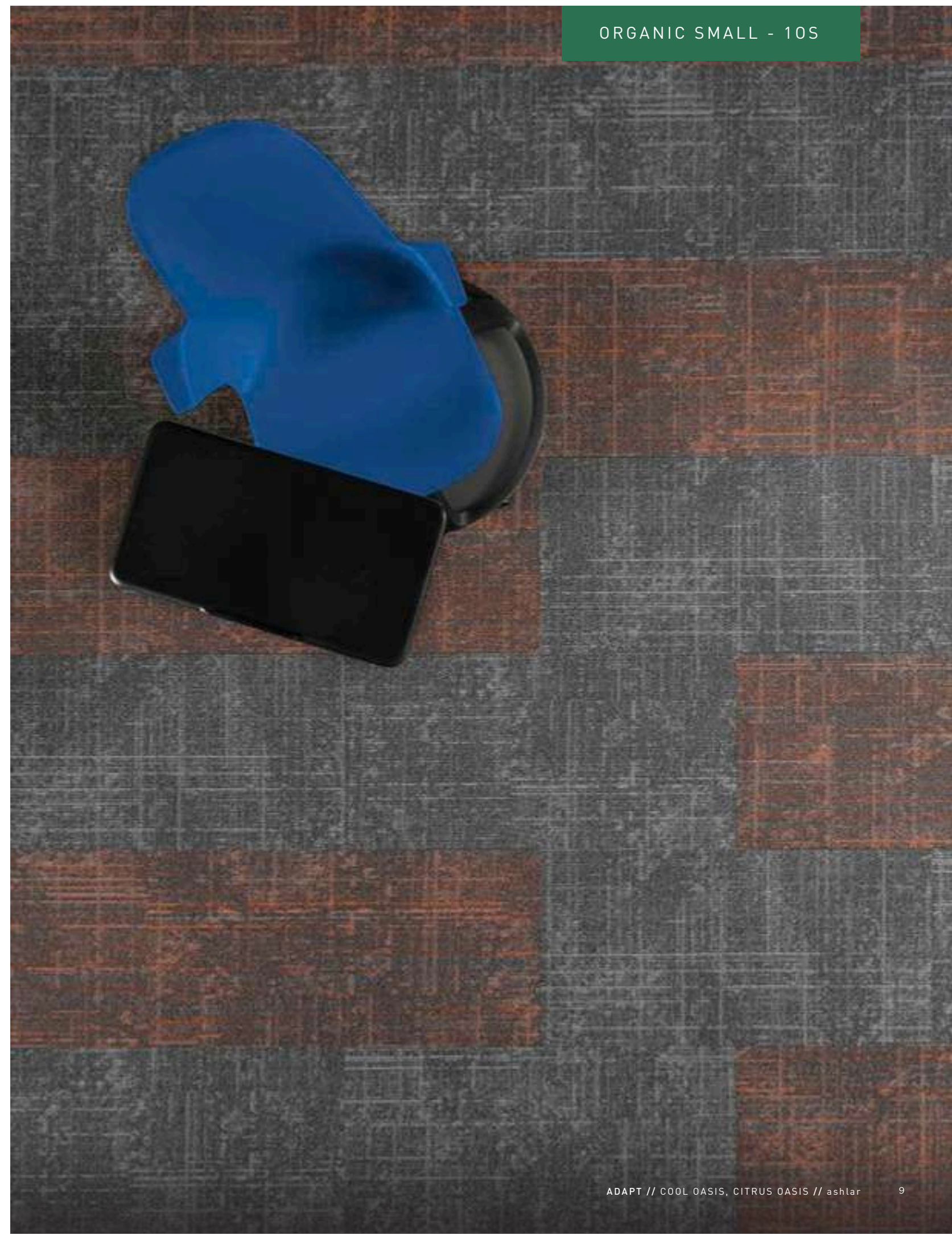


herringbone

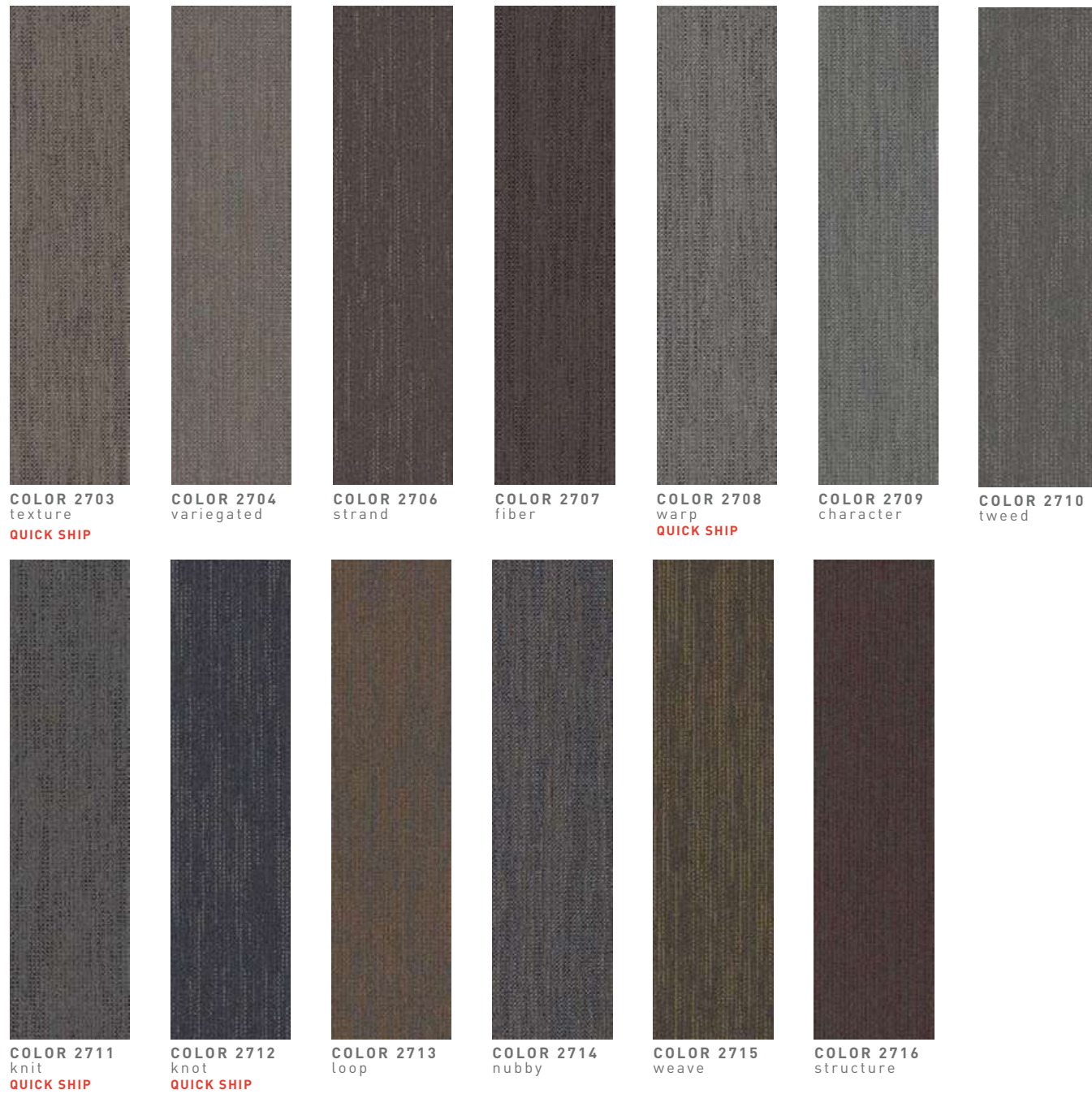


brick

CLASSIFICATION:
HEAVY



BOUCLÉ | 7081 | 12" X 48" MODULAR



Construction	Textured Loop	Pile Density	7451 oz./y3 (276.29 kg/m3)	Standard Adhesive	Commercial Premium Modular Adhesive
Backing	Nexus® Modular	Pattern Repeat	N/A	Optional Adhesive	TileTabs
Dye Method	Solution Dyed	Gauge	1/10 (3.94 rows/cm)	Standard Warranties	Encore SD Ultima Lifetime Fiber Nexus Modular Lifetime Commercial Adhesive for Modular Carpet & LVT Lifetime
Fiber Type	Encore® SD Ultima® (with recycled content)	Stitches Per Inch	9 stitches/in (3.54 stitches/cm)	Optional Warranties	Nexus Cushion Modular Lifetime Tile Tabs Nexus Cushion Adhesive
Face Weight	25 oz./sy (848 grams/m2)	Standard Size	12" x 48" approx. (30.48cm x 121.92cm)		

MODULAR
INSTALLATION
METHODS



CLASSIFICATION:
SEVERE



INTRINSIC | 7096 | 24" X 24" MODULAR



COLOR 2717
authentic



COLOR 2718
central



COLOR 2719
2719



COLOR 2720
fundamental



COLOR 2722
innate



COLOR 2723
key



COLOR 2726
inherent



COLOR 2728
true



COLOR 2729
vital

Construction	Textured Patterned Loop	Pile Density	5925 oz./y3 [219.70 kg/m3]	Standard Adhesive	Commercialon Premium Modular Adhesive
Backing	Nexus® Modular	Pattern Repeat	N/A	Optional Adhesive	TileTabs
Dye Method	Solution Dyed	Gauge	1/12 (4.72 rows/cm)	Standard Warranties	Encore SD Ultima Lifetime Fiber Nexus Modular Lifetime Commercialon Adhesive for Modular Carpet & LVT Lifetime
Fiber Type	Encore® SD Ultima® (with recycled content)	Stitches Per Inch	9.3 stitches/in [3.66 stitches/cm]	Optional Warranties	Nexus Cushion Modular Lifetime Tile Tabs Nexus Cushion Adhesive
Face Weight	16 oz./sy [543 grams/m2]	Standard Size	24" x 24" approx. (60.96cm x 60.96cm)		

MODULAR INSTALLATION METHODS



ashlar



brick



monolithic

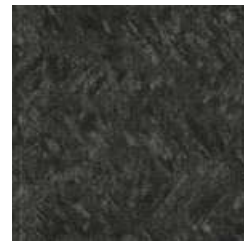


quarter turn

CLASSIFICATION:
SEVERE



TWILL WEAVE | 7586 | 24" X 24" MODULAR



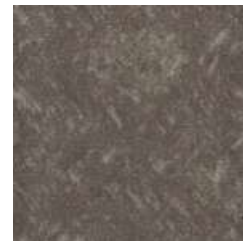
COLOR 2871
fleck



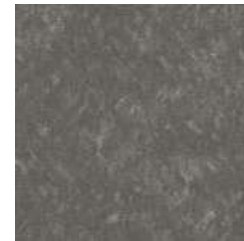
COLOR 2872
ticking



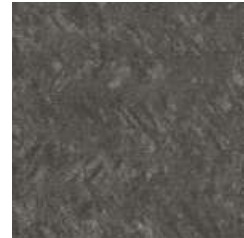
COLOR 2873
calico



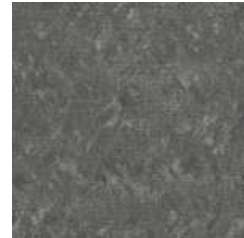
COLOR 2874
mills



COLOR 2875
eyelet



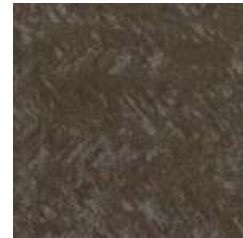
COLOR 2876
gauze



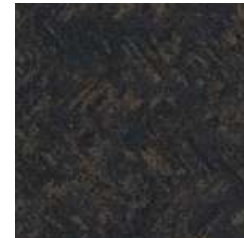
COLOR 2877
felt



COLOR 2878
cloth



COLOR 2879
percale



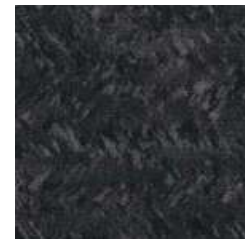
COLOR 2880
armure



COLOR 2881
brocade



COLOR 2882
chintz



COLOR 2883
corded



COLOR 2884
plush

Construction	Textured Patterned Loop	Pile Density	14308 oz./y ³ [530.55 kg/m ³]	Standard Adhesive	Commercial Premium Modular Adhesive
Backing	Nexus® Modular	Pattern Repeat	N/A	Optional Adhesive	TileTabs
Dye Method	Solution Dyed	Gauge	1/10 [3.94 rows/cm]	Standard Warranties	Encore SD Ultima Lifetime Fiber Nexus Modular Lifetime Commercial Adhesive for Modular Carpet & LVT Lifetime
Fiber Type	Encore® SD Ultima® [with recycled content]	Stitches Per Inch	10 stitches/in [3.94 stitches/cm]	Optional Warranties	Nexus Cushion Modular Lifetime Tile Tabs Nexus Cushion Adhesive
Face Weight	32 oz./sy [1085 grams/ m ²]	Standard Size	24" x 24" approx. [60.96cm x 60.96cm]		

MODULAR
INSTALLATION
METHODS



ashlar



brick



monolithic



quarter turn

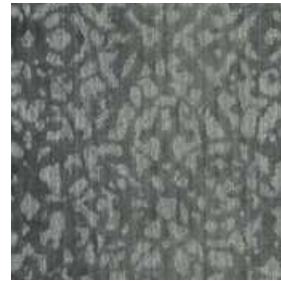
CLASSIFICATION:
SEVERE



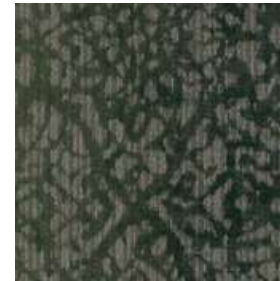
SERENE | 7592 | 24" X 24" MODULAR



COLOR 3228
sky



COLOR 3229
soft grey



COLOR 3230
pine



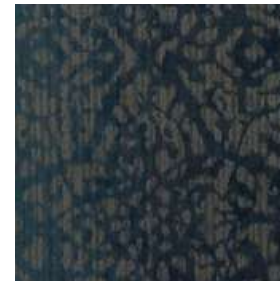
COLOR 3231
teal



COLOR 3232
coffee



COLOR 3233
terra



COLOR 3234
sailor



COLOR 3235
meadowlark



COLOR 3236
sandstone



COLOR 3237
smoke

Construction	Patterned Loop
Backing	Nexus® Modular
Dye Method	Solution/Yarn Dyed
Fiber Type	100% Encore® SD Ultima® nylon
Face Weight	27 oz./sy (915 grams/m2)

Pile Density	8040 oz./y3 (298.13 kg/m3)
Pattern Repeat	N/A
Gauge	1/10 [3.94 rows/cm]
Stitches Per Inch	12.7 stitches/in (5.00 stitches/cm)
Standard Size	24" x 24" approx. [60.96cm x 60.96cm]

Standard Adhesive	Commercialon Premium Modular Adhesive
Optional Adhesive	Tile Tabs
Standard Warranties	Encore BCF (with ColorLoc Plus) Lifetime Nexus Modular Lifetime Commercialon Adhesive for Modular Carpet & LVT Lifetime
Optional Warranties	Nexus Cushion Modular Lifetime Tile Tabs Nexus Cushion Adhesive

MODULAR
INSTALLATION
METHODS



ashlar



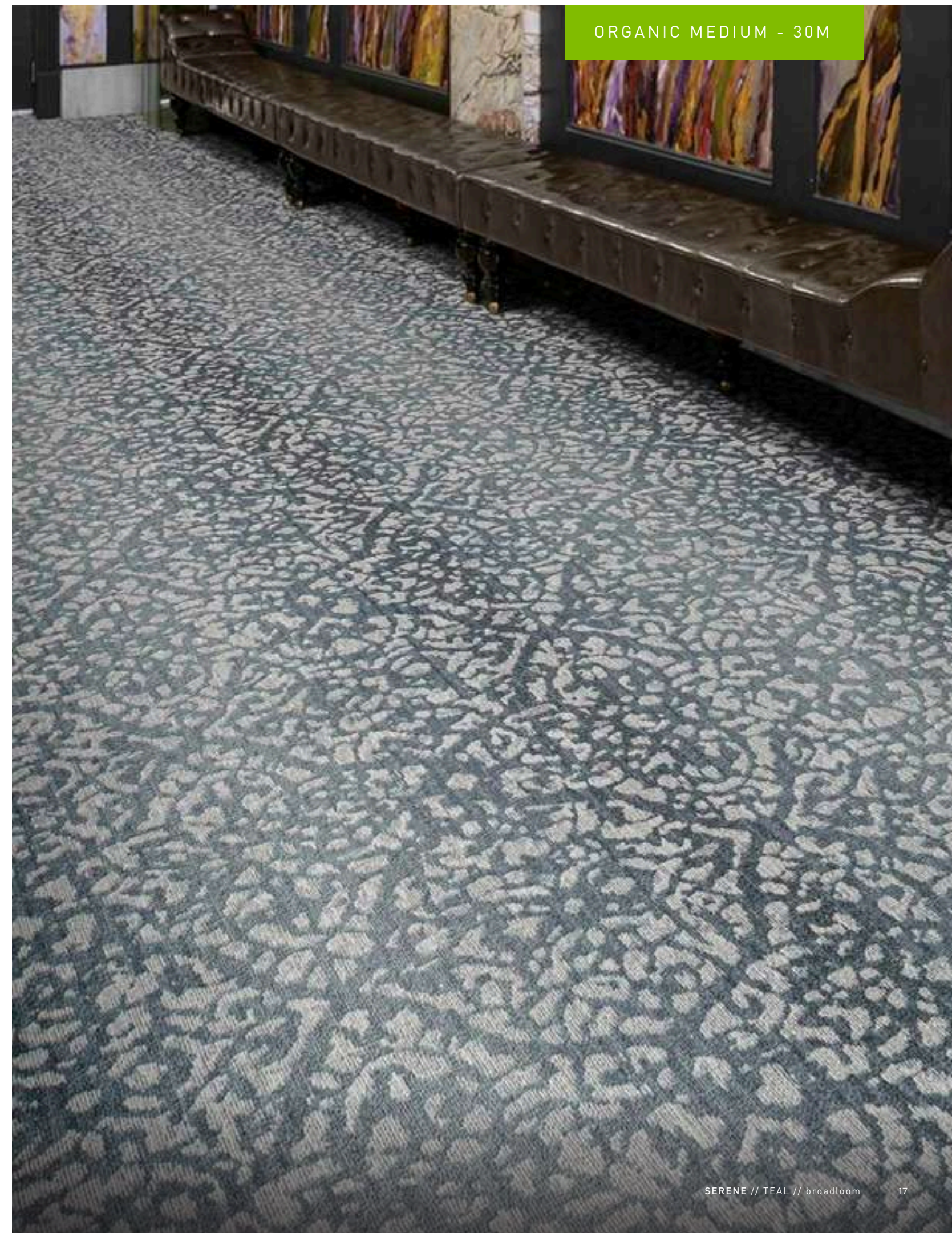
brick



monolithic

CLASSIFICATION:
SEVERE

ORGANIC MEDIUM - 30M



ETCHED | 7030 | 18" X 36" MODULAR



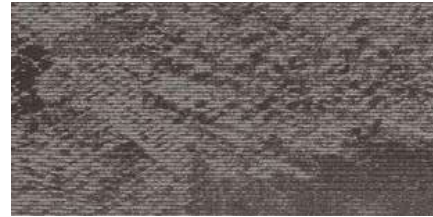
COLOR 1983
impression



COLOR 1984
engrave



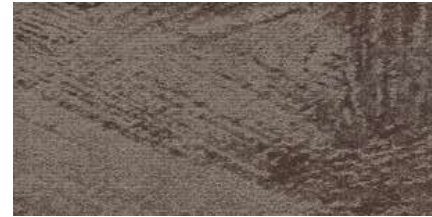
COLOR 1985
inscribe



COLOR 1986
dissolve



COLOR 1987
mordant



COLOR 1988
stipple



COLOR 1989
oxidize



COLOR 1990
emulsion



COLOR 1991
erode



COLOR 1992
chisel



COLOR 1993
ingrain



COLOR 1994
stamp

Construction	Patterned Loop	Pile Density	7391 oz./y3 (274.06 kg/m3)	Standard Adhesive	Commercial Premium Modular Adhesive
Backing	Nexus® Modular	Pattern Repeat	N/A	Optional Adhesive	TileTabs
Dye Method	Solution Dyed	Gauge	1/12 (4.72 rows/cm)	Standard Warranties	Encore SD Ultima Lifetime Fiber Nexus Modular Lifetime Commercial Adhesive for Modular Carpet & LVT Lifetime
Fiber Type	Encore® SD Ultima® (with recycled content)	Stitches Per Inch	10 stitches/in (3.94 stitches/cm)	Optional Warranties	Nexus Cushion Modular Lifetime Tile Tabs Nexus Cushion Adhesive
Face Weight	20 oz./sy (678 grams/m2)	Standard Size	18" x 36" approx. (45.72cm x 91.44cm)		

MODULAR
INSTALLATION
METHODS



CLASSIFICATION:
HEAVY



REVEAL | 7685 | 24" X 24" MODULAR



COLOR 2753
composite



COLOR 2754
Aspect



COLOR 2755
component



COLOR 2627
weathered



COLOR 2756
facet



COLOR 2629
beam



COLOR 2630
tailor



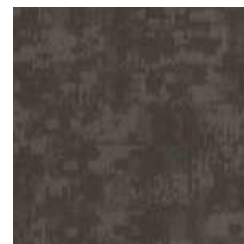
COLOR 2757
castor



COLOR 2632
heritage



COLOR 2758
draftsman



COLOR 2634
hutch



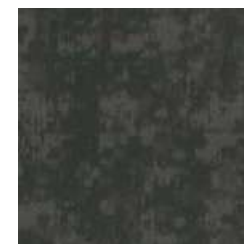
COLOR 2635
raw



COLOR 2636
pipes



COLOR 2638
steel



COLOR 2639
galvanized



COLOR 2640
hardware

Construction	Patterned Loop	Pile Density	6701 oz./y3 (248.48 kg/m3l)	Standard Adhesive	Commercialon Premium Modular Adhesive
Backing	Nexus® Modular	Pattern Repeat	N/A	Optional Adhesive	TileTabs
Dye Method	Solution Dyed	Gauge	1/12 (4.72 rows/cm)	Standard Warranties	Encore SD Ultima Lifetime Fiber Nexus Modular Lifetime Commercialon Adhesive for Modular Carpet & LVT Lifetime
Fiber Type	Encore® SD Ultima® (with recycled content)	Standard Size	24" x 24" approx. (60.96cm x 60.96cm)	Optional Warranties	Nexus Cushion Modular Lifetime Tile Tabs Nexus Cushion Adhesive
Face Weight	19 oz./sy (644 grams/m2)				

MODULAR
INSTALLATION
METHODS



CLASSIFICATION:
SEVERE



HERBALIST | 7571 | 24" X 24" MODULAR



COLOR 3228
sky



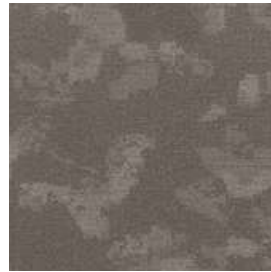
COLOR 3230
pine



COLOR 3232
coffee



COLOR 3234
sailor



COLOR 3236
sandstone



COLOR 3229
soft grey



COLOR 3231
teal



COLOR 3233
terra



COLOR 3235
meadowlark



COLOR 3237
smoke

Construction	Patterned Loop	Pile Density	8040 oz./y3 (298.13 kg/m3)	Standard Adhesive	Commercialon Premium Modular Adhesive
Backing	Nexus® Modular	Pattern Repeat	N/A	Optional Adhesive	Tile Tabs
Dye Method	Solution/Yarn Dyed	Gauge	1/10 [3.94 rows/cm]	Standard Warranties	Encore BCF (with ColorLoc Plus) Lifetime Nexus Modular Lifetime Commercialon Adhesive for Modular Carpet & LVT Lifetime
Fiber Type	Encore® RE Nylon [recycled content!]	Stitches Per Inch	12.7 stitches/in (5.00 stitches/cm)	Optional Warranties	Nexus Cushion Modular Lifetime Tile Tabs Nexus Cushion Adhesive
Face Weight	20 oz./sy [678 grams/m2]	Standard Size	24" x 24" approx. [60.96cm x 60.96cm]		

MODULAR
INSTALLATION
METHODS



brick



quarter turn

CLASSIFICATION:
SEVERE

ORGANIC LARGE - 20L



TRANQUIL | 7593 | 24" X 24" MODULAR



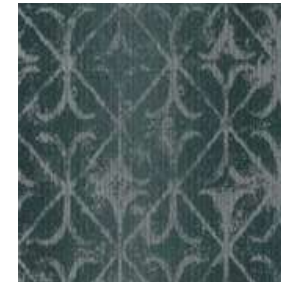
COLOR 3228
sky



COLOR 3229
soft grey



COLOR 3230
pine



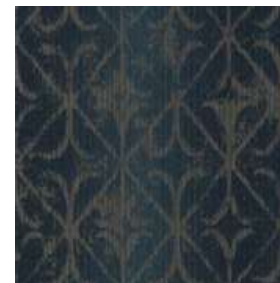
COLOR 3231
teal



COLOR 3232
coffee



COLOR 3233
terra



COLOR 3234
sailor



COLOR 3235
meadowlark



COLOR 3236
sandstone



COLOR 3237
smoke

Construction	Patterned Loop
Backing	Nexus® Modular
Dye Method	Solution/Yarn Dyed
Fiber Type	100% Encore® SD Ultima® nylon
Face Weight	27 oz./sy (915 grams/m2)

Pile Density	8040 oz./y3 (298.13 kg/m3)
Pattern Repeat	N/A
Gauge	1/10 [3.94 rows/cm]
Stitches Per Inch	12.7 stitches/in (5.00 stitches/cm)
Standard Size	24" x 24" approx. [60.96cm x 60.96cm]

Standard Adhesive	Commercialon Premium Modular Adhesive
Optional Adhesive	Tile Tabs
Standard Warranties	Encore BCF (with ColorLoc Plus) Lifetime Nexus Modular Lifetime Commercialon Adhesive for Modular Carpet & LVT Lifetime
Optional Warranties	Nexus Cushion Modular Lifetime Tile Tabs Nexus Cushion Adhesive

MODULAR
INSTALLATION
METHODS



ashlar



brick



monolithic

CLASSIFICATION:
SEVERE

ORGANIC LARGE - 30L



TWEED | 7083 | 12" X 48" MODULAR



COLOR 2978
stitch
QUICK SHIP



COLOR 2984
weft
QUICK SHIP



COLOR 2985
woolen
QUICK SHIP



COLOR 2983
serge
QUICK SHIP



COLOR 2979
pleat
QUICK SHIP

Construction	Patterned Loop	Pile Density	7063 oz./y3 [261.90 kg/m3]	Standard Adhesive	Commercialon Premium Modular Adhesive
Backing	Nexus® Modular	Pattern Repeat	N/A	Optional Adhesive	Tile Tabs
Dye Method	Solution Dyed	Gauge	1/12 [4.72 rows/cm]	Standard Warranties	Encore SD Ultima Lifetime Fiber Nexus Modular Lifetime Commercialon Adhesive for Modular Carpet & LVT Lifetime
Fiber Type	Encore® SD Ultima® [with recycled content]	Standard Size	12" x 48" approx. [30.48cm x 121.92cm]	Optional Warranties	Nexus Cushion Modular Lifetime Tile Tabs Nexus Cushion Adhesive
Face Weight	22 oz./sy [746 grams/m2]				

MODULAR
INSTALLATION
METHODS



ashlar



basketweave



herringbone

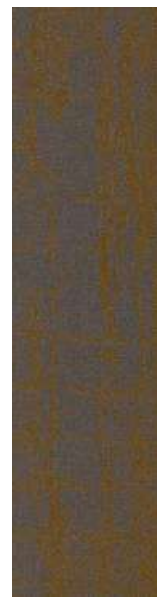


parquet

CLASSIFICATION:
SEVERE



REVERIE | 7684 | 12" X 48" MODULAR



COLOR 2612
rustic



COLOR 2613
function



COLOR 2614
loft



COLOR 2615
factory



COLOR 2616
chalk



COLOR 2617
preserve



COLOR 2618
wonder



COLOR 2619
parlor



COLOR 2620
mill

Construction	Patterned Loop	Pile Density	7063 oz./y3 [261.90 kg/m3]	Standard Adhesive	Commercial Premium Modular Adhesive
Backing	Nexus® Modular	Pattern Repeat	N/A	Optional Adhesive	Tile Tabs
Dye Method	Solution Dyed	Gauge	1/12 [4.72 rows/cm]	Standard Warranties	Encore SD Ultima Lifetime Fiber Nexus Modular Lifetime Commercial Adhesive for Modular Carpet & LVT Lifetime
Fiber Type	Encore® SD Ultima® [with recycled content]	Standard Size	12" x 48" approx. [30.48cm x 121.92cm]	Optional Warranties	Nexus Cushion Modular Lifetime Tile Tabs Nexus Cushion Adhesive
Face Weight	22 oz./sy [746 grams/m2]				

MODULAR
INSTALLATION
METHODS



ashlar



basketweave



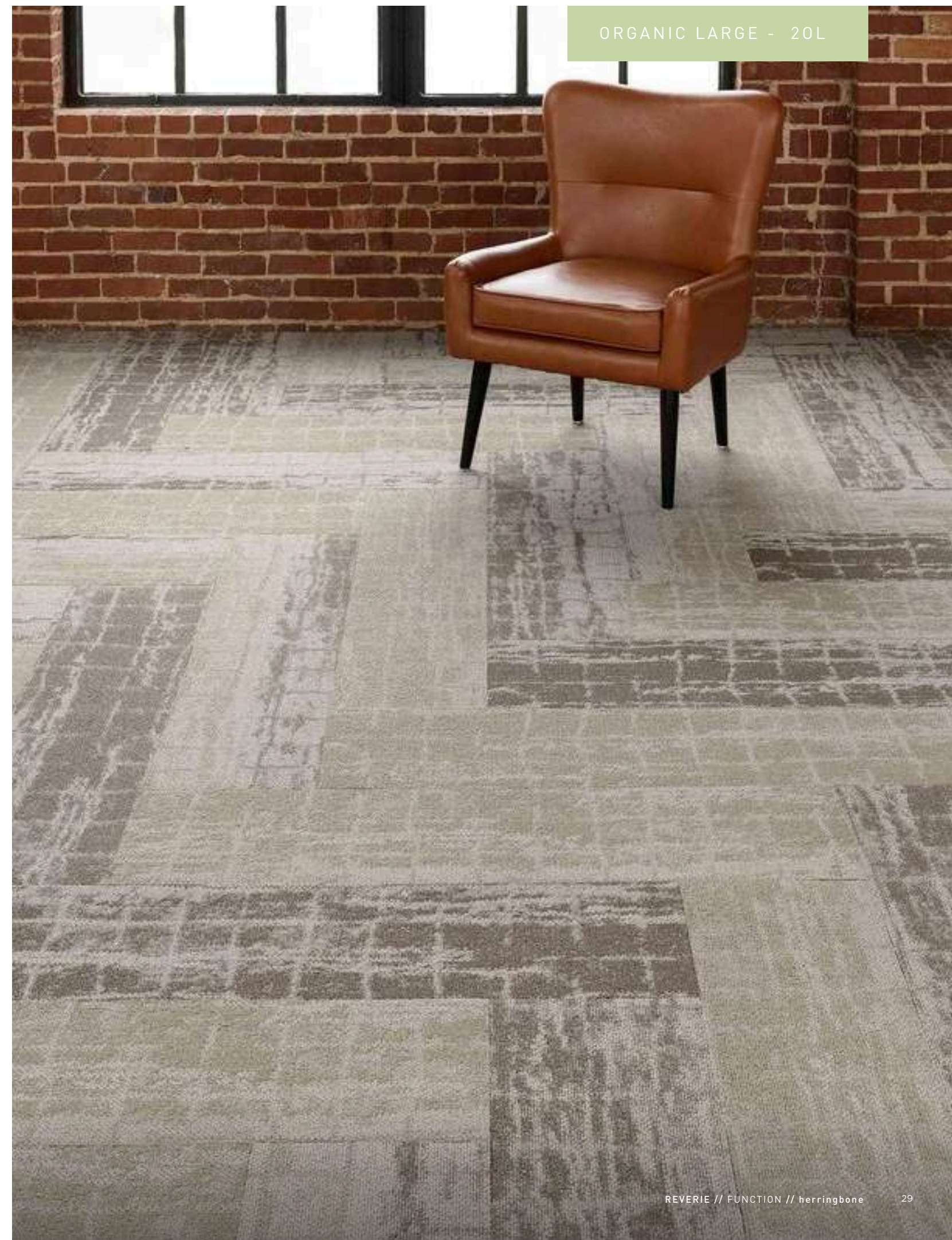
herringbone



parquet

CLASSIFICATION:
SEVERE

ORGANIC LARGE - 20L



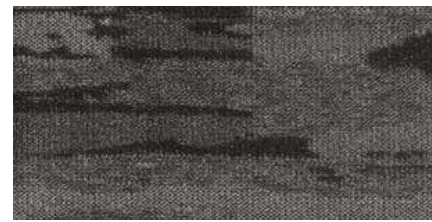
ORGANIC RAKU | 7062 | 18" X 36" MODULAR



COLOR 2354
Adobe



COLOR 2351
burnished



COLOR 2348
flint



COLOR 2355
frits



COLOR 2350
high fire



COLOR 2353
iridescent



COLOR 2345
kiln



COLOR 2344
silica

Construction	Textured Patterned Loop	Pile Density	6845 oz./y3 [253.82 kg/m3]	Standard Adhesive	Commercial Premium Modular Adhesive
Backing	Nexus® Modular	Pattern Repeat	N/A	Optional Adhesive	TileTabs
Dye Method	Solution/Yarn Dyed	Gauge	1/12 [4.72 rows/cm]	Standard Warranties	Encore BCF (with ColorLoc Plus) Lifetime Nexus Modular Lifetime Commercial Adhesive for Modular Carpet & LVT Lifetime
Fiber Type	Encore SD Nylon and Encore Nylon with ColorLoc Plus	Stitches Per Inch	12 stitches/in [4.72 stitches/cm]	Optional Warranties	Nexus Cushion Modular Lifetime Tile Tabs Nexus Cushion Adhesive
Face Weight	24 oz./sy [814 grams/m2]	Standard Size	18" x 36" approx. [45.72cm x 91.44cm]		

MODULAR
INSTALLATION
METHODS



CLASSIFICATION:
SEVERE



IMPULSE III | 7246 | 24" X 24" MODULAR



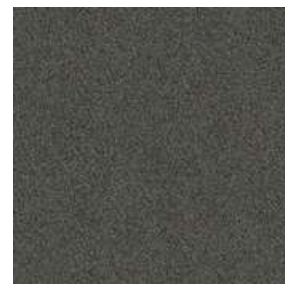
COLOR 1431
roll the dice



COLOR 1432
give it a whirl
QUICK SHIP



COLOR 1807
jump right in
QUICK SHIP



COLOR 1808
make a move
QUICK SHIP



COLOR 1809
let it go



COLOR 1810
work it out



COLOR 1811
tell a tale
QUICK SHIP



COLOR 3408
call an old flame



COLOR 7412
speak your mind
QUICK SHIP



COLOR 8400
take a trip
QUICK SHIP



COLOR 8401
bend a rule



COLOR 8403
take a dare

Construction	Level Loop	Pile Density	7061 oz./y3 [261.83 kg/m3l]	Standard Adhesive	Commercial Premium Modular Adhesive
Backing	Nexus® Modular	Pattern Repeat	N/A	Optional Adhesive	TileTabs
Dye Method	Solution/Yarn Dyed	Gauge	1/10 [3.94 rows/cm]	Standard Warranties	Encore BCF (with ColorLoc Plus) Lifetime Nexus Modular Lifetime Commercialon Adhesive for Modular Carpet & LVT Lifetime
Fiber Type	Encore SD Nylon and Encore Nylon with Color-Loc Plus	Stitches Per Inch	8.5 stitches/in [3.35 stitches/cm]	Optional Warranties	Nexus Cushion Modular Lifetime Tile Tabs Nexus Cushion Adhesive
Face Weight	20 oz./sy [678 grams/m2l]	Standard Size	24" x 24" approx. (60.96cm x 60.96cm)		

MODULAR INSTALLATION METHODS

ashlar brick monolithic quarter turn

CLASSIFICATION:
SEVERE



PASSAGES MODULAR | 3037 | 24" X 24" MODULAR



COLOR 2040
avenue
vestibule
QUICK SHIP



COLOR 2041
vestibule
QUICK SHIP



COLOR 2042
corridor
QUICK SHIP



COLOR 2043
access
QUICK SHIP



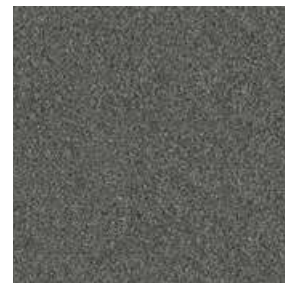
COLOR 2044
aisle
QUICK SHIP



COLOR 2045
lane
QUICK SHIP



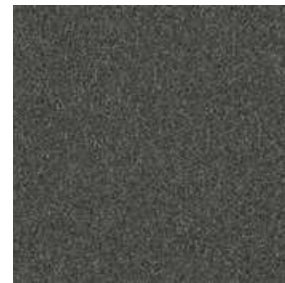
COLOR 2046
channel
QUICK SHIP



COLOR 2047
route
QUICK SHIP



COLOR 2048
course
QUICK SHIP



COLOR 2049
alley
QUICK SHIP



COLOR 2050
pathway
QUICK SHIP



COLOR 2051
trail
QUICK SHIP

Construction	Textured Loop	Pile Density	7452 oz./y3 [276.32 kg/m3]	Standard Adhesive	Commercial Premium Carpet Adhesive
Backing	Nexus® Modular	Pattern Repeat	N/A	Standard Warranties	Encore SD Ultima Lifetime Fiber PremierBac Plus Commercial Premium Broadloom Adhesive Lifetime
Dye Method	Solution Dyed	Gauge	1/10 [3.94 rows/cm]	Optional Warranties	Edure Plus Lifetime TitanBac Plus Lifetime
Fiber Type	Encore® SD Ultima® [with recycled content]	Stitches Per Inch	8 stitches/in [3.15 stitches/cm]		
Face Weight	20 oz./sy [678 grams/m2]	Standard Width	24" x 24" approx. [60.96cm x 60.96cm]		

CLASSIFICATION:
SEVERE



CRAFTWORK | 7099 | 24" X 24" MODULAR



COLOR 2198
mason



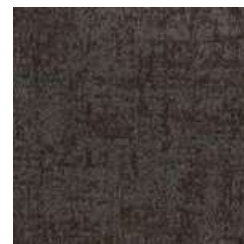
COLOR 3316
jeweler



COLOR 2200
potter
QUICK SHIP



COLOR 2201
weaver
QUICK SHIP



COLOR 2202
woodworker



COLOR 3317
carver



COLOR 2204
painter
QUICK SHIP



COLOR 2205
quilter



COLOR 2206
glassblower



COLOR 2207
tailor
QUICK SHIP



COLOR 3318
metalsmith
QUICK SHIP



COLOR 2210
blacksmith

Construction	Textured Patterned Loop	Pile Density	8254 oz./y3 (306.06 kg/m3)	Standard Adhesive	Commercial Premium Modular Adhesive
Backing	Nexus® Modular	Pattern Repeat	N/A	Optional Adhesive	TileTabs
Dye Method	Solution Dyed	Gauge	1/12 (4.72 rows/cm)	Standard Warranties	Encore SD Ultima Lifetime Fiber Nexus Modular Lifetime Commercial Adhesive for Modular Carpet & LVT Lifetime
Fiber Type	Encore® SD Ultima® (with recycled content)	Stitches Per Inch	12.3 stitches/in (4.84 stitches/cm)	Optional Warranties	Nexus Cushion Modular Lifetime Tile Tabs Nexus Cushion Adhesive
Face Weight	30 oz./sy (1017 grams/m2)	Standard Size	24" x 24" approx. (60.96cm x 60.96cm)		

MODULAR
INSTALLATION
METHODS



ashlar



brick



monolithic



quarter turn

CLASSIFICATION:
SEVERE



ADVANCE | 7600 | 18" X 36" MODULAR



COLOR 3266
cool oasis



COLOR 3267
citrus oasis



COLOR 3268
crystal oasis



COLOR 3269
lime oasis



COLOR 3270
warm beam



COLOR 3271
gold beam



COLOR 3272
azure beam



COLOR 3273
light beam



COLOR 3274
carbon path



COLOR 3275
royal path



COLOR 3276
plum path



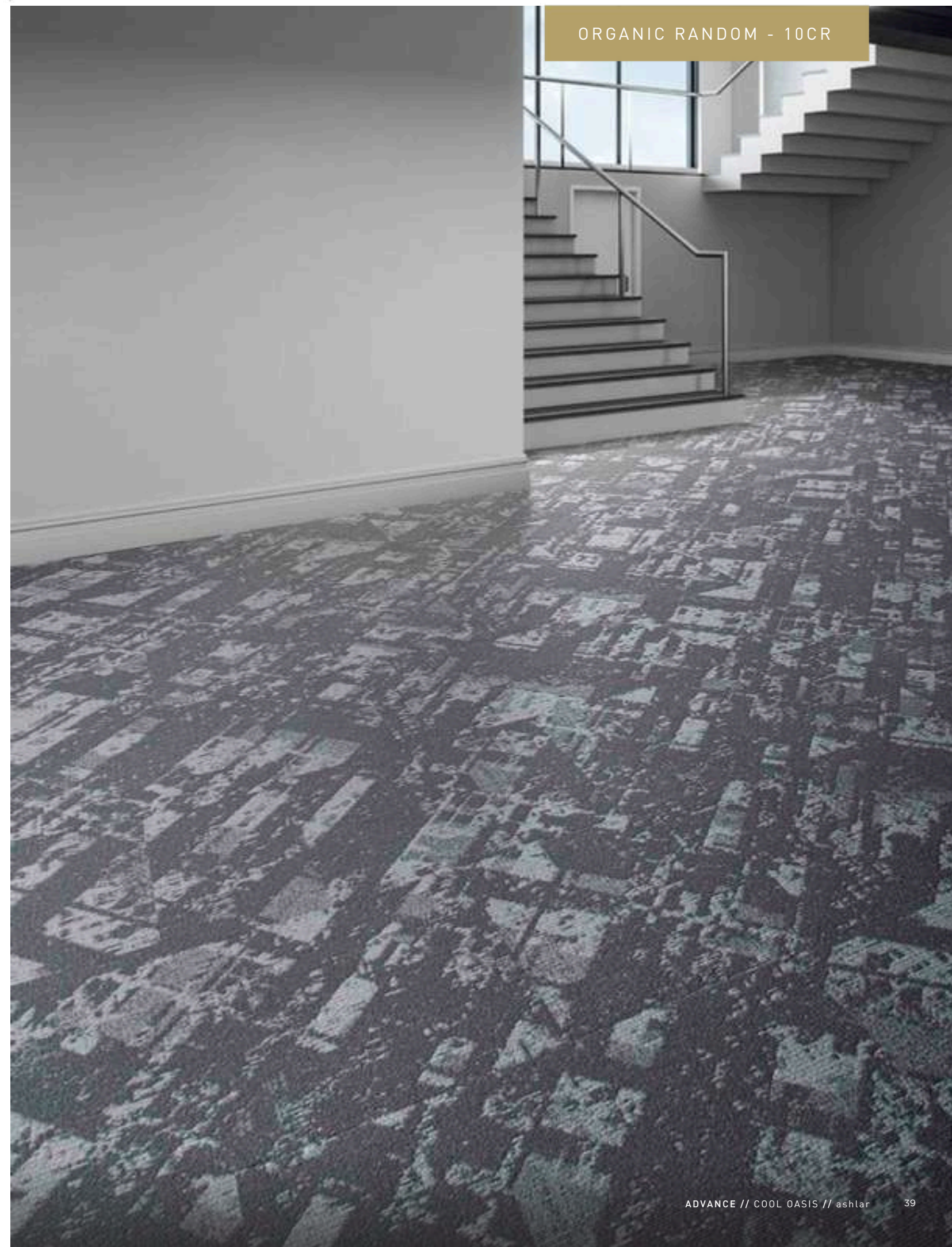
COLOR 3277
brick path

Construction	Patterned Loop	Pile Density	7391 oz./y3 (274.06 kg/m3)	Standard Adhesive	Commercialon Premium Modular Adhesive
Backing	Nexus® Modular	Pattern Repeat	N/A	Optional Adhesive	TileTabs
Dye Method	Solution Dyed	Gauge	1/12 (4.72 rows/cm)	Standard Warranties	Encore SD Ultima Lifetime Fiber Nexus Modular Lifetime Commercialon Adhesive for Modular Carpet & LVT Lifetime
Fiber Type	Encore® SD Ultima® (with recycled content)	Stitches Per Inch	10 stitches/in (3.94 stitches/cm)	Optional Warranties	Nexus Cushion Modular Lifetime Tile Tabs Nexus Cushion Adhesive
Face Weight	20 oz./sy (678 grams/m2)	Standard Size	18" x 36" approx. (45.72cm x 91.44cm)		

MODULAR INSTALLATION METHODS



CLASSIFICATION: HEAVY



CUMLUS | 7480 | 18" X 36" MODULAR



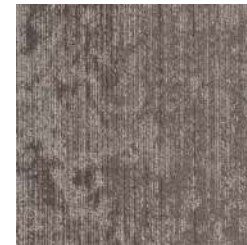
COLOR 3480
stratus color



COLOR 3481
stratus natural



COLOR 3482
cirro color



COLOR 3483
cirro natural



COLOR 3484
alto color



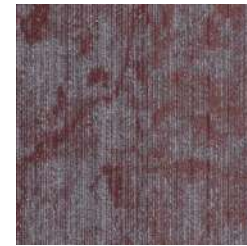
COLOR 3485
alto natural



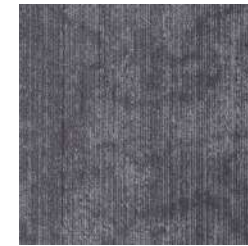
COLOR 3486
nimbus color



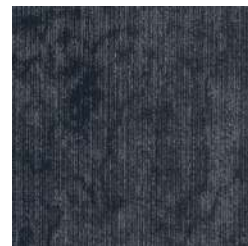
COLOR 3487
nimbus natural



COLOR 3488
strato color



COLOR 3489
strato natural



COLOR 3490
cumulo color



COLOR 3491
cumulo natural



COLOR 3492
cirrus color



COLOR 3493
cirrus natural

Construction	Patterned Loop	Pile Density	8100 oz./y3 (300.35 kg/m3)	Standard Adhesive	Commercialon Premium Modular Adhesive
Backing	Nexus® Modular	Pattern Repeat	N/A	Optional Adhesive	TileTabs
Dye Method	Solution Dyed	Gauge	1/12 (4.72 rows/cm)	Standard Warranties	Encore SD Ultima Lifetime Fiber Nexus Modular Lifetime Commercialon Adhesive for Modular Carpet & LVT Lifetime
Fiber Type	Encore® SD Ultima® (with recycled content)	Stitches Per Inch	10 stitches/in (3.94 stitches/cm)	Optional Warranties	Nexus Cushion Modular Lifetime Tile Tabs Nexus Cushion Adhesive
Face Weight	22 oz./sy (746 grams/m2)	Standard Size	18" x 36" approx. (45.72cm x 91.44cm)		

MODULAR INSTALLATION METHODS



parquet



basketweave



ashlar



herringbone



brick



monolithic

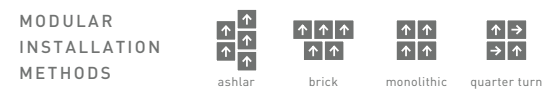
CLASSIFICATION:
HEAVY



COLOR ZONE | 7479 | 18"x36" & 24" X 24" MODULAR



Construction	Textured Patterned Loop	Pile Density	5925 oz./y3 [219.70 kg/m3]	Standard Adhesive	Commercialon Premium Modular Adhesive
Backing	Nexus® Modular	Pattern Repeat	N/A	Optional Adhesive	TileTabs
Dye Method	Solution Dyed	Gauge	1/12 (4.72 rows/cm)	Standard Warranties	Encore SD Ultima Lifetime Fiber Nexus Modular Lifetime Commercialon Adhesive for Modular Carpet & LVT Lifetime
Fiber Type	Encore® SD Ultima® (with recycled content)	Stitches Per Inch	9.3 stitches/in [3.66 stitches/cm]	Optional Warranties	Nexus Cushion Modular Lifetime Tile Tabs Nexus Cushion Adhesive
Face Weight	16 oz./sy [543 grams/m2]	Standard Size	24" x 24" approx. [60.96cm x 60.96cm]		



CLASSIFICATION: SEVERE



IMPULSE III | 2433 | BROADLOOM



COLOR 1431
roll the dice



COLOR 1432
give it a whirl
QUICK SHIP



COLOR 1807
jump right in
QUICK SHIP



COLOR 1808
make a move
QUICK SHIP



COLOR 1809
let it go



COLOR 1810
work it out



COLOR 1811
tell a tale
QUICK SHIP



COLOR 3408
call an old flame



COLOR 7412
speak your mind
QUICK SHIP



COLOR 8400
take a trip
QUICK SHIP



COLOR 8401
bend a rule



COLOR 8403
take a dare

Construction	Level Loop	Pile Density	7452 oz./y3 [276.32 kg/m3]	Standard Adhesive	Commercial Premium Carpet Adhesive
Backing	PremierBac® Plus [standard backing]	Pattern Repeat	N/A	Standard Warranties	Encore BCF (with Colorloc Plus) Lifetime PremierBac Plus Commercial Premium Broadloom Adhesive Lifetime
Dye Method	Solution/Yarn Dyed	Gauge	1/10 [3.94 rows/cm]	Optional Warranties	Endure Plus Lifetime TitanBac Plus Lifetime
Fiber Type	Encore SD Nylon and Encore Nylon with ColorLoc Plus	Stitches Per Inch	7.83 stitches/in [3.08 stitches/cm]		
Face Weight	20 oz./sy [678 grams/m2]	Standard Size	12 ft 3.66 m		

CLASSIFICATION:
HEAVY

ORGANIC ROLLS - R-SMALL



BOUCLÉ | 3081 | BROADLOOM



COLOR 2703
texture



COLOR 2704
variegated



COLOR 2706
strand



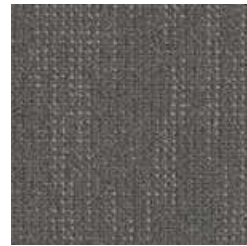
COLOR 2707
fiber



COLOR 2708
warp



COLOR 2709
character



COLOR 2710
tweed



COLOR 2711
knit



COLOR 2712
knot



COLOR 2713
loop



COLOR 2714
nubby



COLOR 2715
weave



COLOR 2716
structure

Construction	Textured Loop	Pile Density	7795 oz./y3 [289.04 kg/m3]	Standard Adhesive	Commercialon Premium Carpet Adhesive
Backing	PremierBac® Plus [standard backing]	Pattern Repeat	.50" [w] x .00" [l] approx. [1.27cm x .00cm]	Standard Warranties	Encore SD Ultima Lifetime Fiber PremierBac Plus Commercialon Premium Broadloom Adhesive Lifetime
Dye Method	Solution Dyed	Gauge	1/10 [3.94 rows/cm]	Optional Warranties	Endure Plus Lifetime TitanBac Plus Lifetime
Fiber Type	Encore® SD Ultima® [with recycled content]	Stitches Per Inch	9 stitches/in [3.54 stitches/cm]		
Face Weight	25 oz./sy [848 grams/m2]	Standard Size	12 ft 3.66 m		

CLASSIFICATION:
SEVERE



PASSAGES 26 | 3037 | BROADLOOM



COLOR 2040
avenue
QUICK SHIP



COLOR 2041
vestibule
QUICK SHIP



COLOR 2042
corridor
QUICK SHIP



COLOR 2043
access
QUICK SHIP



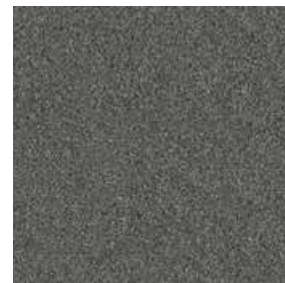
COLOR 2044
aisle
QUICK SHIP



COLOR 2045
lane
QUICK SHIP



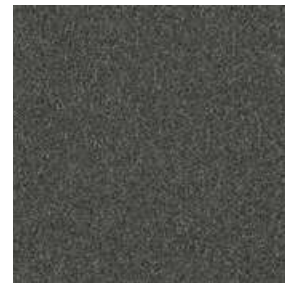
COLOR 2046
channel
QUICK SHIP



COLOR 2047
route
QUICK SHIP



COLOR 2048
course
QUICK SHIP



COLOR 2049
alley
QUICK SHIP



COLOR 2050
pathway
QUICK SHIP



COLOR 2051
trail
QUICK SHIP

Construction	Level Loop	Pile Density	7172 oz./y3 [265.94 kg/m3]	Standard Adhesive	Commercial Premium Carpet Adhesive
Backing	PremierBac® Plus [standard backing]	Pattern Repeat	N/A	Standard Warranties	Encore SD Ultima Lifetime Fiber PremierBac Plus Commercial Premium Broadloom Adhesive Lifetime
Dye Method	Solution Dyed	Gauge	1/10 [3.94 rows/cm]	Optional Warranties	Edure Plus Lifetime TitanBac Plus Lifetime
Fiber Type	Encore® SD Ultima® [with recycled content]	Stitches Per Inch	9.8 stitches/in [3.86 stitches/cm]		
Face Weight	26 oz./sy [882 grams/m2]	Standard Width	12 ft 3.66 m		

CLASSIFICATION:
SEVERE



FICTION II | 7025 | 24" X 24" MODULAR



COLOR 1772
fantasy



COLOR 1773
conflict
QUICK SHIP



COLOR 1774
parody



COLOR 1775
irony
QUICK SHIP



COLOR 1785
dialogue
QUICK SHIP



COLOR 3344
subtitle
QUICK SHIP



COLOR 3345
spine



COLOR 3346
lexicon
QUICK SHIP

Construction	Textured Patterned Loop	Pile Density	5925 oz./y3 (219.70 kg/m3)	Standard Adhesive	Commercialon Premium Modular Adhesive
Backing	Nexus® Modular	Pattern Repeat	N/A	Optional Adhesive	Tile Tabs
Dye Method	Solution Dyed	Gauge	1/12 (4.72 rows/cm)	Standard Warranties	Encore SD Ultima Lifetime Fiber Nexus Modular Lifetime Commercialon Adhesive for Modular Carpet & LVT Lifetime
Fiber Type	Encore® SD Ultima® (with recycled content)	Stitches Per Inch	10 stitches/in (3.94 stitches/cm)	Optional Warranties	Nexus Cushion Modular Lifetime Tile Tabs Nexus Cushion Adhesive
Face Weight	19 oz./sy (644 grams/m2)	Standard Size	24" x 24" approx. 160.96cm x 60.96cm		

MODULAR
INSTALLATION
METHODS



CLASSIFICATION:
HEAVY



CITY BLOCKS III | 7202 | 24" X 24" MODULAR



COLOR 1315
jackson square



COLOR 2103
freedom square



COLOR 2104
celebration square



COLOR 2105
university square



COLOR 3341
grand square



COLOR 3342
tower square



COLOR 3343
market square

Construction	Textured Patterned Loop
Backing	Nexus® Modular
Dye Method	Solution/Yarn Dyed
Fiber Type	Encore SD Nylon and Encore Nylon with ColorLoc Plus
Face Weight	18 oz./sy [610 grams/m2]

Pile Density	6542 oz./y3 [242.58 kg/m3]
Pattern Repeat	N/A
Gauge	1/12 (4.72 rows/cm)
Stitches Per Inch	9.5 stitches/in [3.74 stitches/cm]
Standard Size	24" x 24" approx. [60.96cm x 60.96cm]

Standard Adhesive	Commercialon Premium Modular Adhesive
Optional Adhesive	Tile Tabs
Standard Warranties	Encore BCF (with ColorLoc Plus) Lifetime Nexus Modular Lifetime Commercialon Adhesive for Modular Carpet & LVT Lifetime
Optional Warranties	Nexus Cushion Modular Lifetime Tile Tabs Nexus Cushion Adhesive

MODULAR INSTALLATION METHODS



CLASSIFICATION: SEVERE



NARRATIVE II | 7084 | 12" X 48" MODULAR



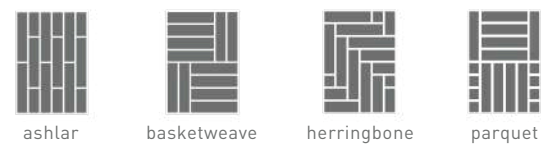
COLOR 1780 cliff-hanger COLOR 1782 harmony COLOR 1783 tribute COLOR 2995 edition COLOR 2996 forward COLOR 3003 title COLOR 3004 afterword



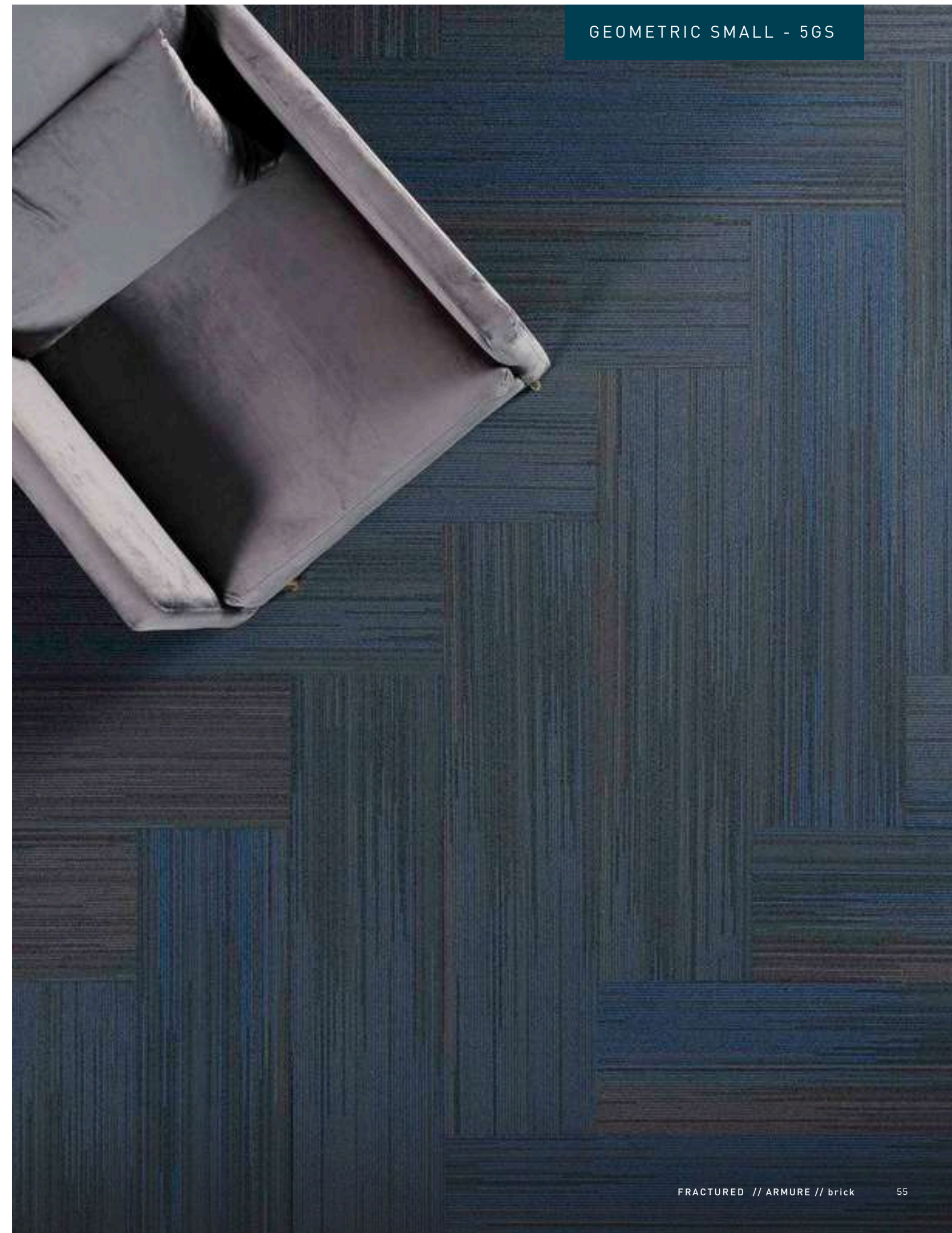
COLOR 2998 epilogue COLOR 2999 prologue COLOR 3000 folio COLOR 3001 glossary COLOR 3002 binding COLOR 3073 haiku COLOR 3074 myth

Construction	Textured Patterned Loop	Pile Density	5925 oz./y3 [219.70 kg/m3]	Standard Adhesive	Commercialon Premium Modular Adhesive
Backing	Nexus® Modular	Pattern Repeat	N/A	Optional Adhesive	TileTabs
Dye Method	Solution Dyed	Gauge	1/12 (4.72 rows/cm)	Standard Warranties	Encore SD Ultima Lifetime Fiber Nexus Modular Lifetime Commercialon Adhesive for Modular Carpet & LVT Lifetime
Fiber Type	Encore® SD Ultima® (with recycled content)	Stitches Per Inch	9.3 stitches/in [3.66 stitches/cm]	Optional Warranties	Nexus Cushion Modular Lifetime Tile Tabs Nexus Cushion Adhesive
Face Weight	16 oz./sy [543 grams/m2]	Standard Size	12" x 48" [30.5 cm x 122.0 cm]		

MODULAR INSTALLATION METHODS



CLASSIFICATION: SEVERE



ZEPHYR | 7478 | 18" X 36" MODULAR



COLOR 3361
breeze



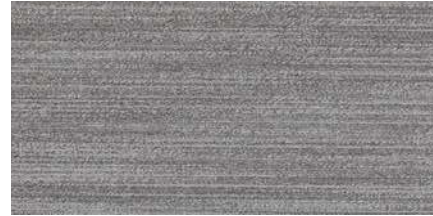
COLOR 3362
westerlies



COLOR 3363
local



COLOR 3364
trade



COLOR 3365
winds



COLOR 3366
planetary



COLOR 3367
monsoon

Construction	Patterned Loop	Pile Density	7391 oz./y3 (274.06 kg/m3)	Standard Adhesive	Commercialon Premium Modular Adhesive
Backing	Nexus® Modular	Pattern Repeat	N/A	Optional Adhesive	TileTabs
Dye Method	Solution Dyed	Gauge	1/12 (4.72 rows/cm)	Standard Warranties	Encore SD Ultima Lifetime Fiber Nexus Modular Lifetime Commercialon Adhesive for Modular Carpet & LVT Lifetime
Fiber Type	Encore® SD Ultima® (with recycled content)	Stitches Per Inch	10 stitches/in (3.94 stitches/cm)	Optional Warranties	Nexus Cushion Modular Lifetime Tile Tabs Nexus Cushion Adhesive
Face Weight	20 oz./sy (678 grams/m2)	Standard Size	18" x 36" approx. (45.72cm x 91.44cm)		

MODULAR
INSTALLATION
METHODS



CLASSIFICATION:
HEAVY



MERIDIAN | 7579 | 24" X 24" MODULAR



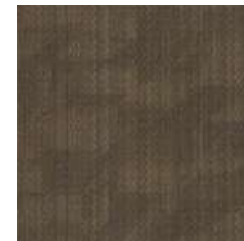
COLOR 2052
vista
QUICK SHIP



COLOR 2053
zenith
QUICK SHIP



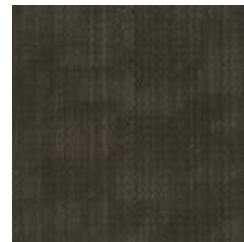
COLOR 2054
highrise
QUICK SHIP



COLOR 2055
beacon



COLOR 2056
backdrop



COLOR 2057
aerial
QUICK SHIP



COLOR 2058
overlook



COLOR 2062
sight line



COLOR 2064
view
QUICK SHIP



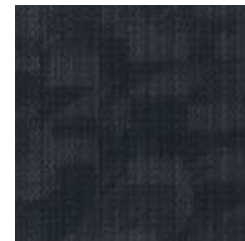
COLOR 2065
empire



COLOR 2066
silhouette



COLOR 2069
terrace



COLOR 2070
vanishing point
QUICK SHIP



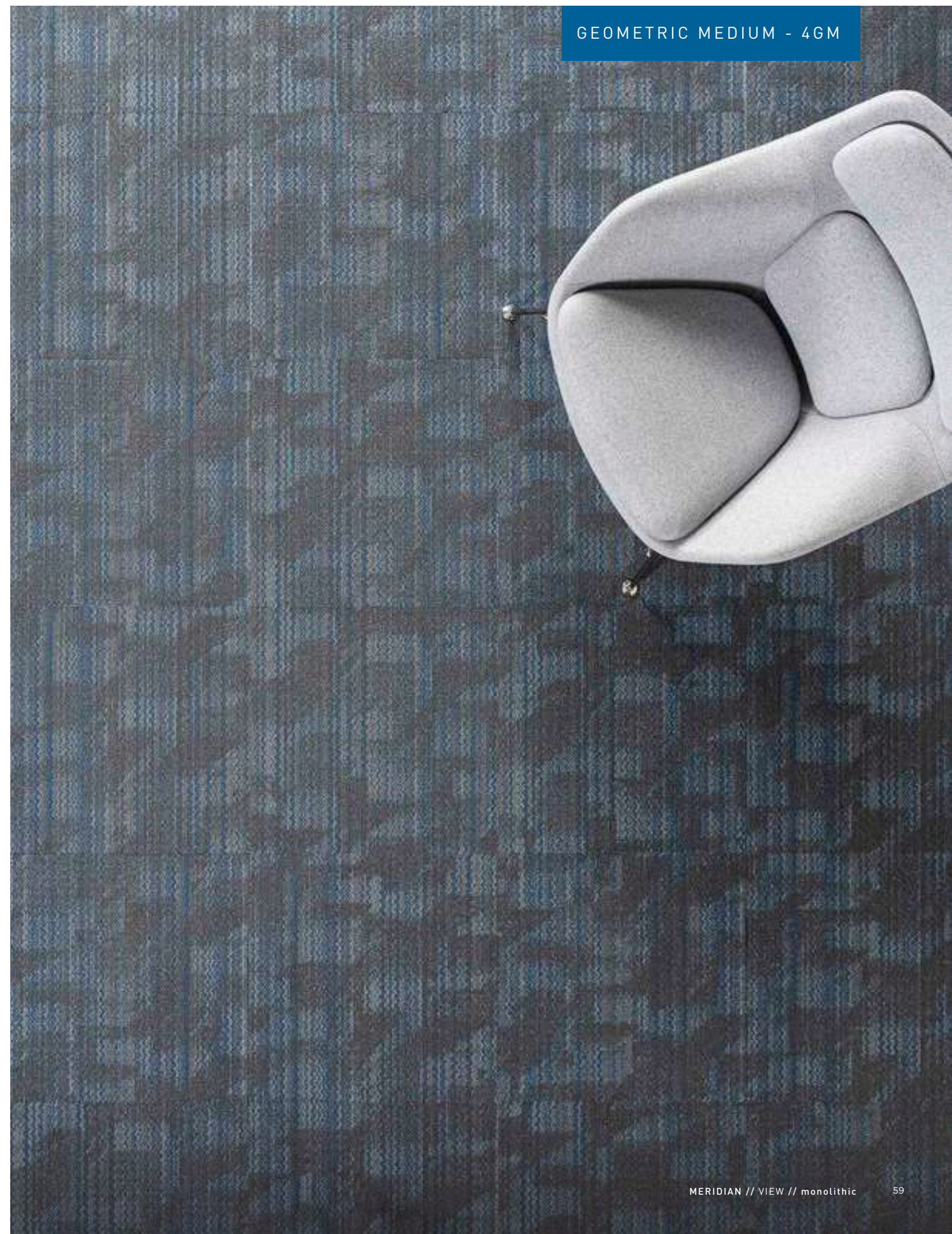
COLOR 2071
panorama

Construction	Patterned Loop	Pile Density	5925 oz./y3 [219.70 kg/m3]	Standard Adhesive	Commercialon Premium Modular Adhesive
Backing	Nexus® Modular	Pattern Repeat	N/A	Optional Adhesive	TileTabs
Dye Method	Solution Dyed	Gauge	1/12 (4.72 rows/cm)	Standard Warranties	Encore SD Ultima Lifetime Fiber Nexus Modular Lifetime Commercialon Adhesive for Modular Carpet & LVT Lifetime
Fiber Type	Encore® SD Ultima® [with recycled content]	Stitches Per Inch	9.3 stitches/in [3.66 stitches/cm]	Optional Warranties	Nexus Cushion Modular Lifetime Tile Tabs Nexus Cushion Adhesive
Face Weight	16 oz./sy [543 grams/m2]	Standard Size	24" x 24" approx. [60.96cm x 60.96cm]		

MODULAR
INSTALLATION
METHODS



CLASSIFICATION:
HEAVY



NATURALIST | 7572 | 24" X 24" MODULAR



COLOR 3228
sky



COLOR 3230
pine



COLOR 3232
coffee



COLOR 3234
sailor



COLOR 3236
sandstone



COLOR 3229
soft grey



COLOR 3231
teal



COLOR 3233
terra



COLOR 3235
meadowlark



COLOR 3237
smoke

Construction	Patterned Loop	Pile Density	8040 oz./y3 (298.13 kg/m3)	Standard Adhesive	Commercialon Premium Modular Adhesive
Backing	Nexus® Modular	Pattern Repeat	N/A	Optional Adhesive	Tile Tabs
Dye Method	Solution/Yarn Dyed	Gauge	1/10 [3.94 rows/cm]	Standard Warranties	Encore BCF (with ColorLoc Plus) Lifetime Nexus Modular Lifetime Commercialon Adhesive for Modular Carpet & LVT Lifetime
Fiber Type	Encore® RE Nylon [recycled content]	Stitches Per Inch	12.7 stitches/in [5.00 stitches/cm]	Optional Warranties	Nexus Cushion Modular Lifetime Tile Tabs Nexus Cushion Adhesive
Face Weight	20 oz./sy [678 grams/m2]	Standard Size	24" x 24" approx. [60.96cm x 60.96cm]		



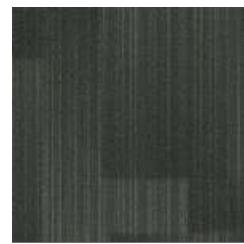
CLASSIFICATION:
SEVERE



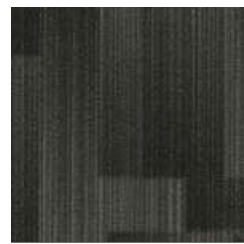
SKYLINE | 7073 | 24" X 24" MODULAR



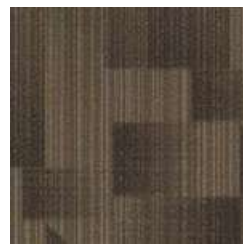
COLOR 2052
vista
QUICK SHIP



COLOR 2053
zenith
QUICK SHIP



COLOR 2054
highrise
QUICK SHIP



COLOR 2055
beacon



COLOR 2056
backdrop



COLOR 2057
aerial
QUICK SHIP



COLOR 2058
overlook



COLOR 2062
sight line



COLOR 2064
view
QUICK SHIP



COLOR 2065
empire



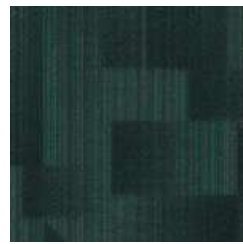
COLOR 2066
silhouette



COLOR 2069
terrace



COLOR 2070
vanishing point
QUICK SHIP



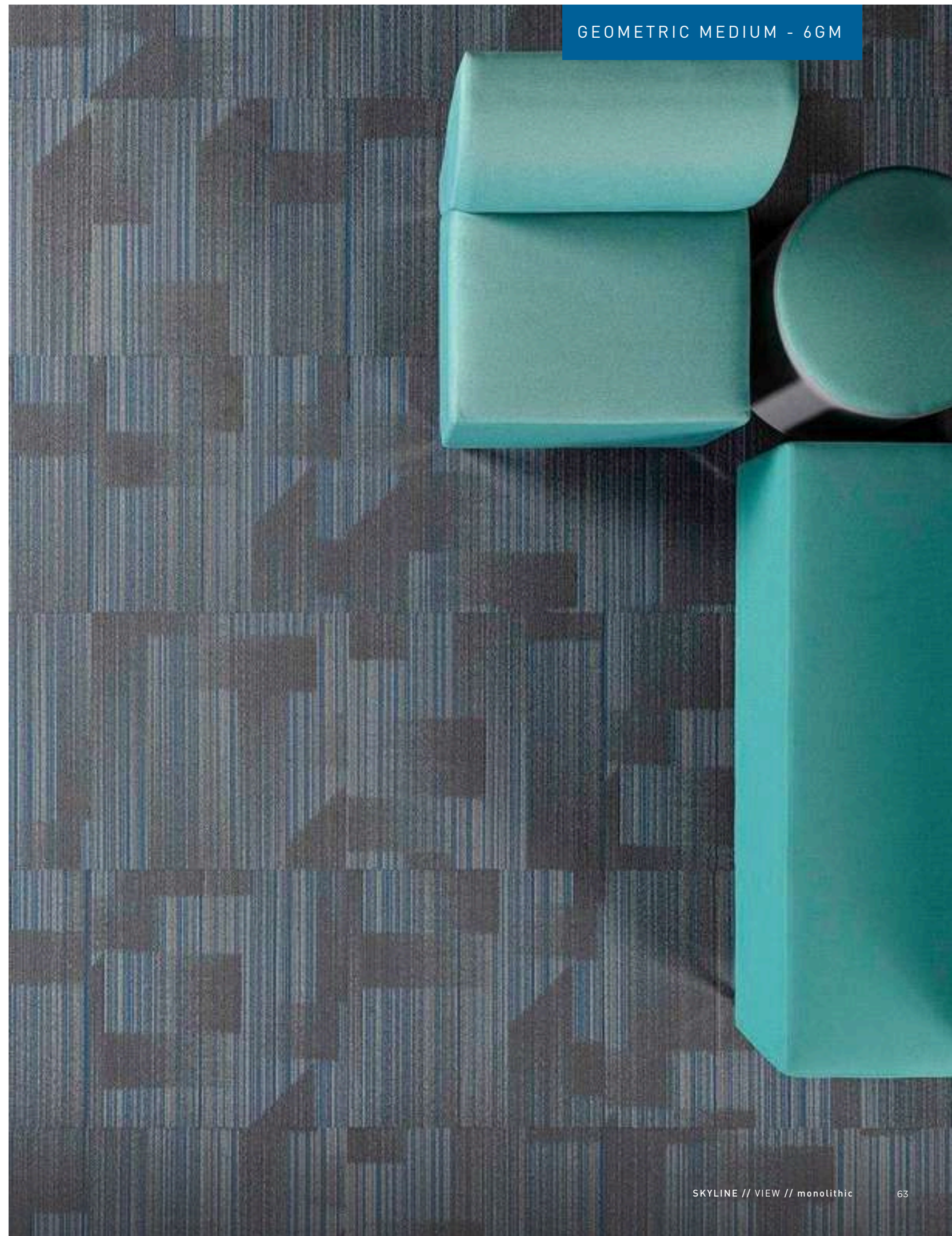
COLOR 2071
panorama

Construction	Textured Patterned Loop	Pile Density	5672 oz./y3 [219.70 kg/m3]	Standard Adhesive	Commercialon Premium Modular Adhesive
Backing	Nexus® Modular	Pattern Repeat	N/A	Optional Adhesive	TileTabs
Dye Method	Solution Dyed	Gauge	1/12 (4.72 rows/cm)	Standard Warranties	Encore SD Ultima Lifetime Fiber Nexus Modular Lifetime Commercialon Adhesive for Modular Carpet & LVT Lifetime
Fiber Type	Encore® SD Ultima® [with recycled content]	Stitches Per Inch	10 stitches/in (3.94 stitches/cm)	Optional Warranties	Nexus Cushion Modular Lifetime Tile Tabs Nexus Cushion Adhesive
Face Weight	16 oz./sy [543 grams/m2]	Standard Size	24" x 24" approx. (60.96cm x 60.96cm)		

MODULAR
INSTALLATION
METHODS



CLASSIFICATION:
SEVERE



STRIA | 7585 | 12" X 48" MODULAR



COLOR 2739 vinyl
 COLOR 2740 blend
 COLOR 2741 merino
 COLOR 2742 pima
 COLOR 2743 knit
 COLOR 2744 2744
 COLOR 2745 fleece



COLOR 2746 viscose
 COLOR 2747 kashmir
 COLOR 2748 crewel
 COLOR 2749 rib knit
 COLOR 2750 terry
 COLOR 2751 cable
 COLOR 2752 poplin

Construction	Textured Patterned Loop	Pile Density	5657 oz./y3 [209.77 kg/m3]	Standard Adhesive	Commercial Premium Modular Adhesive
Backing	Nexus® Modular	Pattern Repeat	N/A	Optional Warranties	Tile Tabs
Dye Method	Solution/Yarn Dyed	Gauge	1/12 [4.72 rows/cm]	Standard Warranties	Encore BCF (with ColorLoc Plus) Lifetime Nexus Modular Lifetime Commercial Adhesive for Modular Carpet & LVT Lifetime
Fiber Type	Encore SD Nylon and Encore Nylon with ColorLoc Plus	Stitches Per Inch	11 stitches/in [4.33 stitches/cm]	Optional Warranties	Nexus Cushion Modular Lifetime Tile Tabs Nexus Cushion Adhesive
Face Weight	22 oz./sy [746 grams/m2]	Standard Size	12" x 48" approx. [30.48cm x 121.92cm]		

MODULAR INSTALLATION METHODS



CLASSIFICATION: SEVERE



WELL VERSED MODULAR | 7072 | 24" X 24" MODULAR



QUICK SHIP
COLOR 3522
lewis



QUICK SHIP
COLOR 2027
blake



QUICK SHIP
COLOR 2026
plath



QUICK SHIP
COLOR 3520
austen



QUICK SHIP
COLOR 2024
wilde



QUICK SHIP
COLOR 2025
whitman



QUICK SHIP
COLOR 3521
woolf



QUICK SHIP
COLOR 3523
king



QUICK SHIP
COLOR 2022
frost



QUICK SHIP
COLOR 2023
hughes

Construction	Textured Patterned Loop	Pile Density	5330 oz./y3 [197.64 kg/m3]	Standard Adhesive	Commercial Premium Modular Adhesive
Backing	Nexus® Modular	Pattern Repeat	N/A	Optional Adhesive	Tile Tabs
Dye Method	Solution Dyed	Gauge	1/12 (4.72 rows/cm)	Standard Warranties	Encore SD Ultima Lifetime Fiber Nexus Modular Lifetime Commercial Adhesive for Modular Carpet & LVT Lifetime
Fiber Type	Encore® SD Ultima® [with recycled content]	Stitches Per Inch	9.6 stitches/in [3.78 stitches/cm]	Optional Warranties	Nexus Cushion Modular Lifetime Tile Tabs Nexus Cushion Adhesive
Face Weight	16 oz./sy [543 grams/m2]	Standard Size	24" x 24" approx. [60.96cm x 60.96cm]		

MODULAR
INSTALLATION
METHODS



CLASSIFICATION:
HEAVY



ELEVATED | 7074 | 24" X 24" MODULAR



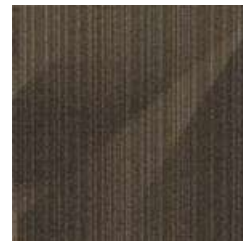
COLOR 2052
vista
QUICK SHIP



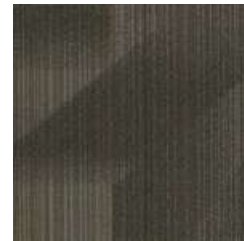
COLOR 2053
zenith
QUICK SHIP



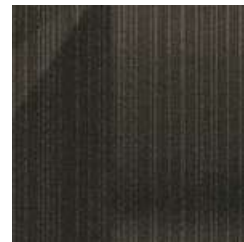
COLOR 2054
highrise
QUICK SHIP



COLOR 2055
beacon



COLOR 2056
backdrop



COLOR 2057
aerial
QUICK SHIP



COLOR 2058
overlook



COLOR 2062
sight line



COLOR 2064
view
QUICK SHIP



COLOR 2065
empire



COLOR 2066
silhouette



COLOR 2069
terrace



COLOR 2070
vanishing point
QUICK SHIP



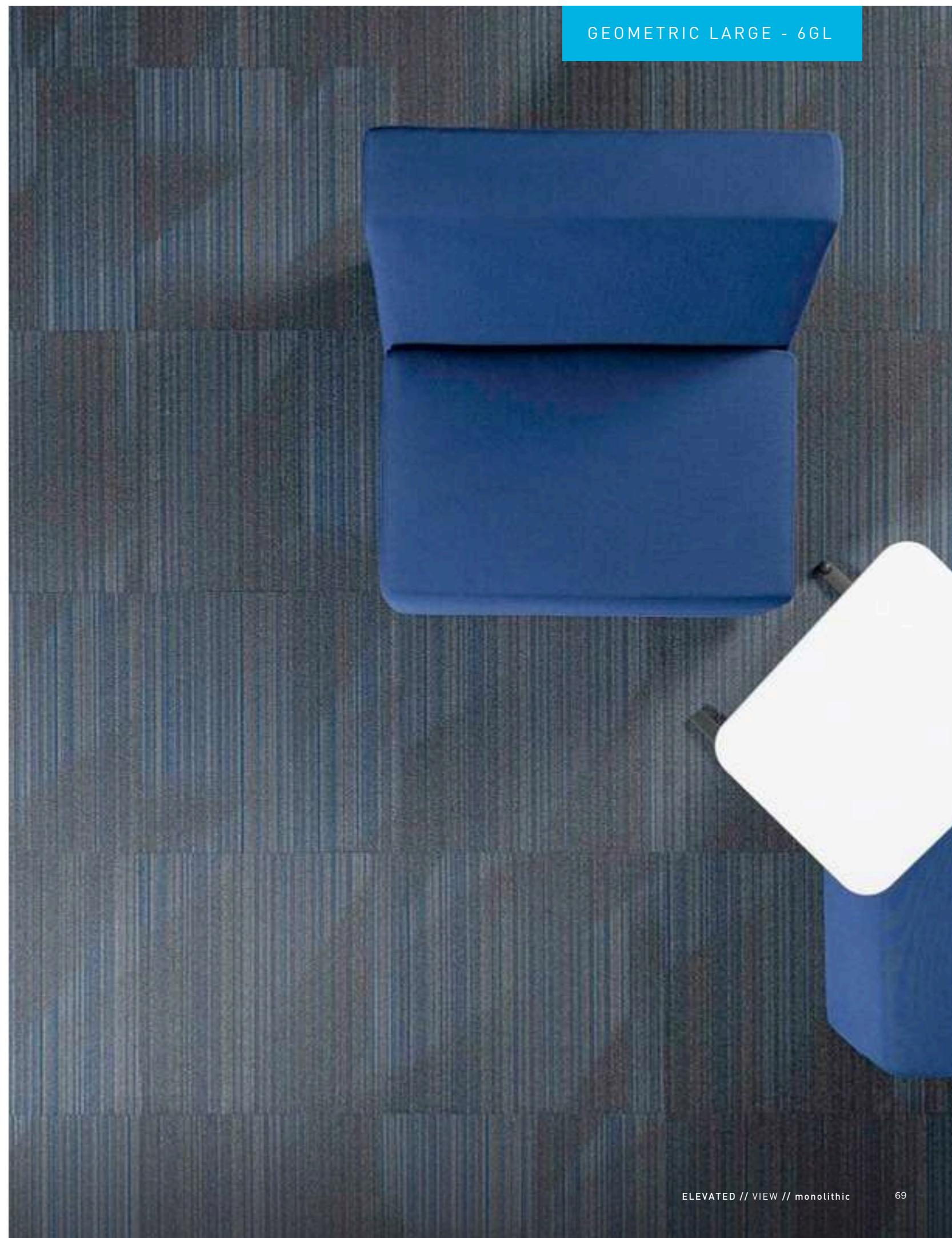
COLOR 2071
panorama

Construction	Textured Patterned Loop	Pile Density	5925 oz./y3 [219.70 kg/m3]	Standard Adhesive	Commercialon Premium Modular Adhesive
Backing	Nexus® Modular	Pattern Repeat	N/A	Optional Adhesive	TileTabs
Dye Method	Solution Dyed	Gauge	1/12 (4.72 rows/cm)	Standard Warranties	Encore SD Ultima Lifetime Fiber Nexus Modular Lifetime Commercialon Adhesive for Modular Carpet & LVT Lifetime
Fiber Type	Encore® SD Ultima® (with recycled content)	Stitches Per Inch	9.3 stitches/in [3.66 stitches/cm]	Optional Warranties	Nexus Cushion Modular Lifetime Tile Tabs Nexus Cushion Adhesive
Face Weight	16 oz./sy [543 grams/m2]	Standard Size	24" x 24" approx. [60.96cm x 60.96cm]		

MODULAR INSTALLATION METHODS



CLASSIFICATION: SEVERE



JOURNEY | 7621 | 18" X 36" MODULAR



COLOR 3347
pace
QUICK SHIP



COLOR 3348
red pace
QUICK SHIP



COLOR 3349
blue pace
QUICK SHIP



COLOR 3350
purple pace
QUICK SHIP



COLOR 3351
lead
QUICK SHIP



COLOR 3352
green lead
QUICK SHIP



COLOR 3353
gold lead
QUICK SHIP



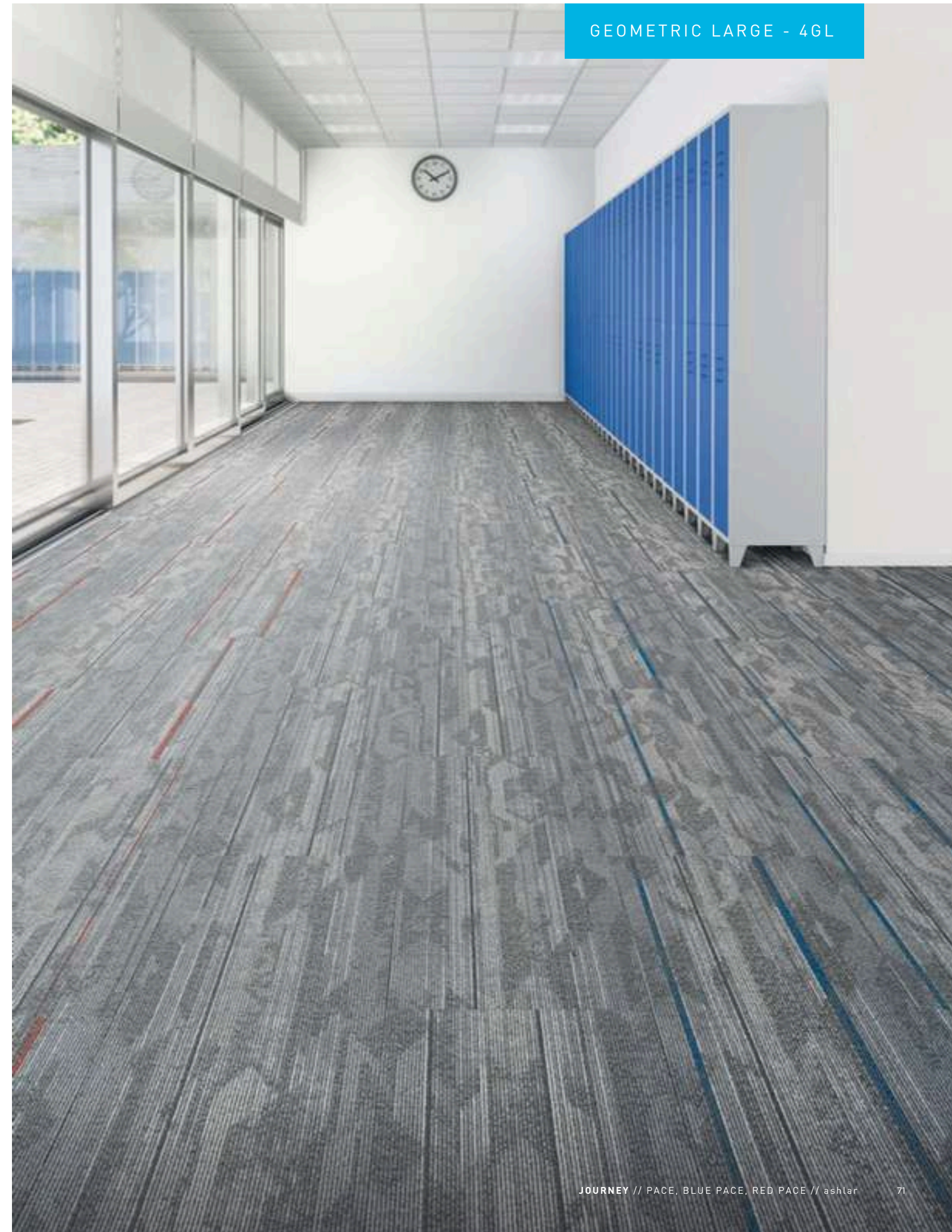
COLOR 3354
orange lead
QUICK SHIP

Construction	Patterned Loop	Pile Density	7391 oz./y3 (274.06 kg/m3)	Standard Adhesive	Commercialon Premium Modular Adhesive
Backing	Nexus® Modular	Pattern Repeat	N/A	Optional Adhesive	TileTabs
Dye Method	Solution Dyed	Gauge	1/12 (4.72 rows/cm)	Standard Warranties	Encore SD Ultima Lifetime Fiber Nexus Modular Lifetime Commercialon Adhesive for Modular Carpet & LVT Lifetime
Fiber Type	Encore® SD Ultima® (with recycled content)	Stitches Per Inch	10 stitches/in (3.94 stitches/cm)	Optional Warranties	Nexus Cushion Modular Lifetime Tile Tabs Nexus Cushion Adhesive
Face Weight	20 oz./sy (678 grams/m2)	Standard Size	18" x 36" approx. (45.72cm x 91.44cm)		

MODULAR INSTALLATION METHODS



CLASSIFICATION:
HEAVY



OUTFITTER | 7064 | 18" X 36" MODULAR



COLOR 2391
muslin
QUICK SHIP



COLOR 2392
corduroy



COLOR 2393
pincord



COLOR 2394
jacquard



COLOR 2395
tricot



COLOR 2396
tweed
QUICK SHIP



COLOR 2397
seersucker



COLOR 2398
duck
QUICK SHIP



COLOR 2399
oilcloth
QUICK SHIP



COLOR 2400
flocked



COLOR 2401
jersey



COLOR 2402
twill

Construction	Textured Patterned Loop	Pile Density	6726 oz./y3 (249.40 kg/m3l)	Standard Adhesive	Commercialon Premium Modular Adhesive
Backing	Nexus® Modular	Pattern Repeat	N/A	Optional Adhesive	Tile Tabs
Dye Method	Solution Dyed	Gauge	1/1214.72 rows/cm]	Standard Warranties	Encore SD Ultima Fiber Nexus Modular Commercialon Adhesive for Modular Carpet & LVT
Fiber Type	Encore® SD Ultima® [with recycled content]	Stitches Per Inch	10 stitches/in 13.94 stitches/cm]	Optional Warranties	Nexus Cushion Modular Tile Tabs Nexus Cushion Adhesive Commercialon High Moisture Adhesive for Modular Carpet and LVT
Face Weight	15 oz./sy 1509 grams/m2l	Standard Width	18" x 36" approx. [45.72cm x 91.44cm]		

CLASSIFICATION:
HEAVY



VERTEX | 7438 | 24" X 24" MODULAR



COLOR SRD13
crest
QUICK SHIP



COLOR SRD14
lofty
QUICK SHIP



COLOR SRD46
rocky
QUICK SHIP



COLOR SRD52
peak
QUICK SHIP



COLOR SRD53
spectral
QUICK SHIP



COLOR SRD54
glacial
QUICK SHIP



COLOR SRD56
rugged
QUICK SHIP



COLOR SRD58
apex
QUICK SHIP



COLOR SRD59
mighty
QUICK SHIP



COLOR SRD73
cliff
QUICK SHIP



COLOR SRD76
stony
QUICK SHIP



COLOR SRD77
brow
QUICK SHIP

Construction	Textured Loop	Pile Density	5318 oz./y3 [197.19 kg/m3]	Standard Adhesive	Commercial Premium Modular Adhesive
Backing	Standard Back	Pattern Repeat	N/A	Standard Warranties	Encore SD Ultima Fiber Lifetime Standard Back
Dye Method	Solution Dyed	Gauge	1/10 [3.94 rows/cm]	Optional Warranties	Endure Plus Lifetime TitanBac Plus Lifetime
Fiber Type	Encore® SD Ultima® [with recycled content]	Stitches Per Inch	12.66 stitches/in [4.98 stitches/cm]		
Face Weight	26 oz./sy [882 grams/m2]	Standard Width	12 ft 3.66 m		

CLASSIFICATION:
HEAVY



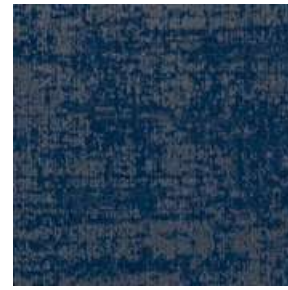
CHROMATICS | 7199 | 24" X 24" MODULAR



COLOR 3320
arctic



COLOR 3323
moss



COLOR 3324
sapphire



COLOR 3319
scarlet



COLOR 3321
ink



COLOR 3322
mulberry

Construction	Textured Patterned Loop	Pile Density	5925 oz./y3 [219.70 kg/m3]	Standard Adhesive	Commercialon Premium Modular Adhesive
Backing	Nexus® Modular	Pattern Repeat	N/A	Optional Adhesive	TileTabs
Dye Method	Solution Dyed	Gauge	1/12 (4.72 rows/cm)	Standard Warranties	Encore SD Ultima Lifetime Fiber Nexus Modular Lifetime Commercialon Adhesive for Modular Carpet & LVT Lifetime
Fiber Type	Encore® SD Ultima® (with recycled content)	Stitches Per Inch	9.3 stitches/in [3.66 stitches/cm]	Optional Warranties	Nexus Cushion Modular Lifetime Tile Tabs Nexus Cushion Adhesive
Face Weight	16 oz./sy [543 grams/m2]	Standard Size	24" x 24" approx. [60.96cm x 60.96cm]		

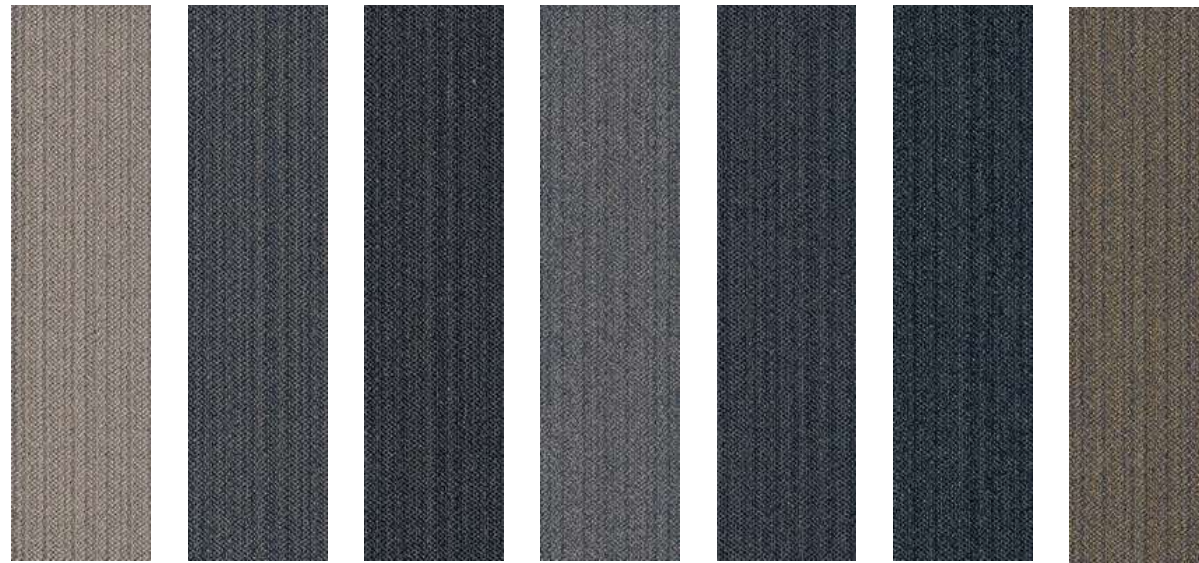
MODULAR
INSTALLATION
METHODS



CLASSIFICATION:
SEVERE



JACK | 7914 | 12" X 48" MODULAR



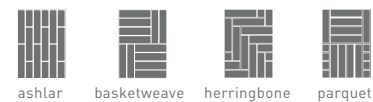
COLOR 3419 vest
 COLOR 3420 blazer
 COLOR 3421 lapel
 COLOR 3422 tie **QUICK SHIP**
 COLOR 3423 hem **QUICK SHIP**
 COLOR 3424 facing
 COLOR 3425 seam



COLOR 3427 notch
 COLOR 3428 sleeve
 COLOR 3429 garment **QUICK SHIP**
 COLOR 3430 fitting
 COLOR 3431 suit **QUICK SHIP**

Construction	Patterned Loop	Pile Density	7063 oz./y3 [261.90 kg/m3]	Standard Adhesive	Commercialon Premium Modular Adhesive
Backing	Nexus® Modular	Pattern Repeat	N/A	Optional Adhesive	Tile Tabs
Dye Method	Solution Dyed	Gauge	1/12 [4.72 rows/cm]	Standard Warranties	Encore SD Ultima Lifetime Fiber Nexus Modular Lifetime Commercialon Adhesive for Modular Carpet & LVT Lifetime
Fiber Type	Encore® SD Ultima® [with recycled content]	Standard Size	12" x 48" approx. [30.48cm x 121.92cm]	Optional Warranties	Nexus Cushion Modular Lifetime Tile Tabs Nexus Cushion Adhesive
Face Weight	22 oz./sy [746 grams/m2]				

MODULAR
INSTALLATION
METHODS



CLASSIFICATION:
SEVERE



IMPROMPTU | 7071 | 12" X 48" MODULAR



COLOR 2377
offhand



COLOR 2378
improvise



COLOR 2380
unscripted
QUICK SHIP



COLOR 2383
on a whim



COLOR 2384
at first glance
QUICK SHIP



COLOR 2385
free spirit
QUICK SHIP



COLOR 2387
from the hip



COLOR 2388
out of the blue



COLOR 2389
impetuous
QUICK SHIP



COLOR 2390
on the spot
QUICK SHIP

Construction	Textured Patterned Loop	Pile Density	7540 oz./y3 [279.59 kg/m3]	Standard Adhesive	Commercial Premium Modular Adhesive
Backing	Nexus® Modular	Pattern Repeat	N/A	Optional Warranties	Tile Tabs
Dye Method	Solution/Yarn Dyed	Gauge	1/12 [4.72 rows/cm]	Standard Warranties	Encore BCF (with ColorLoc Plus) Lifetime Nexus Modular Lifetime Commercial Adhesive for Modular Carpet & LVT Lifetime
Fiber Type	Encore SD Nylon and Encore Nylon with ColorLoc Plus	Stitches Per Inch	10 stitches/in [3.94 stitches/cm]	Optional Warranties	Nexus Cushion Modular Lifetime Tile Tabs Nexus Cushion Adhesive
Face Weight	22 oz./sy [746 grams/m2]	Standard Size	12" x 48" approx. [30.48cm x 121.92cm]		

MODULAR INSTALLATION METHODS



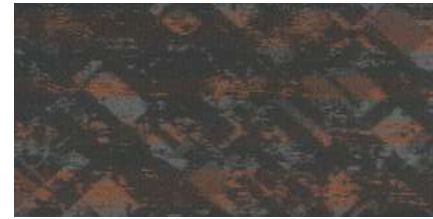
CLASSIFICATION:
SEVERE



ADVANCE | 7600 | 18" X 36" MODULAR



COLOR 3266
cool oasis



COLOR 3267
citrus oasis



COLOR 3268
crystal oasis



COLOR 3269
lime oasis



COLOR 3270
warm beam



COLOR 3271
gold beam



COLOR 3272
azure beam



COLOR 3273
light beam



COLOR 3274
carbon path



COLOR 3275
royal path



COLOR 3276
plum path



COLOR 3277
brick path

Construction	Patterned Loop	Pile Density	7391 oz./y3 (274.06 kg/m3)	Standard Adhesive	Commercialon Premium Modular Adhesive
Backing	Nexus® Modular	Pattern Repeat	N/A	Optional Adhesive	TileTabs
Dye Method	Solution Dyed	Gauge	1/12 (4.72 rows/cm)	Standard Warranties	Encore SD Ultima Lifetime Fiber Nexus Modular Lifetime Commercialon Adhesive for Modular Carpet & LVT Lifetime
Fiber Type	Encore® SD Ultima® (with recycled content)	Stitches Per Inch	10 stitches/in (3.94 stitches/cm)	Optional Warranties	Nexus Cushion Modular Lifetime Tile Tabs Nexus Cushion Adhesive
Face Weight	20 oz./sy (678 grams/m2)	Standard Size	18" x 36" approx. (45.72cm x 91.44cm)		

MODULAR INSTALLATION METHODS



CLASSIFICATION:
HEAVY



VERTEX 26 | 2439 | BROADLOOM



COLOR SRD13
crest
QUICK SHIP



COLOR SRD14
lofty
QUICK SHIP



COLOR SRD46
rocky
QUICK SHIP



COLOR SRD52
peak
QUICK SHIP



COLOR SRD53
spectral
QUICK SHIP



COLOR SRD54
glacial
QUICK SHIP



COLOR SRD56
rugged
QUICK SHIP



COLOR SRD58
apex
QUICK SHIP



COLOR SRD59
mighty
QUICK SHIP



COLOR SRD73
cliff
QUICK SHIP



COLOR SRD76
stony
QUICK SHIP



COLOR SRD77
brow
QUICK SHIP

Construction	Textured Loop	Pile Density	5318 oz./y3 [197.19 kg/m3]	Standard Adhesive	Commercial Premium Modular Adhesive
Backing	Standard Back	Pattern Repeat	N/A	Standard Warranties	Encore SD Ultima Fiber Lifetime Standard Back
Dye Method	Solution Dyed	Gauge	1/10 [3.94 rows/cm]	Optional Warranties	Endure Plus Lifetime TitanBac Plus Lifetime
Fiber Type	Encore® SD Ultima® [with recycled content]	Stitches Per Inch	12.66 stitches/in [4.98 stitches/cm]		
Face Weight	26 oz./sy [882 grams/m2]	Standard Width	12 ft 3.66 m		

CLASSIFICATION:
HEAVY

GEOMETRIC ROLL - R-SMALL



PASSAGES MODULAR | 7037 | 24" X 24" MODULAR



COLOR 2040
avenue
QUICK SHIP



COLOR 2041
vestibule
QUICK SHIP



COLOR 2042
corridor
QUICK SHIP



COLOR 2043
access
QUICK SHIP



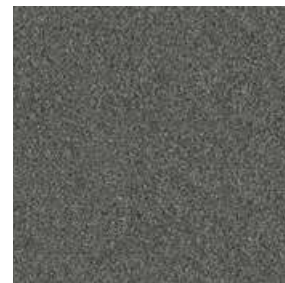
COLOR 2044
aisle
QUICK SHIP



COLOR 2045
lane
QUICK SHIP



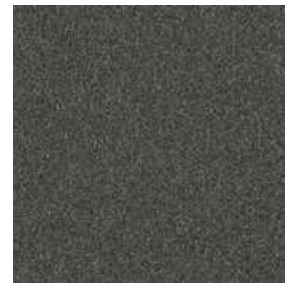
COLOR 2046
channel
QUICK SHIP



COLOR 2047
route
QUICK SHIP



COLOR 2048
course
QUICK SHIP



COLOR 2049
alley
QUICK SHIP



COLOR 2050
pathway
QUICK SHIP



COLOR 2051
trail
QUICK SHIP

Construction	Textured Loop	Pile Density	7452 oz./y3 [276.32 kg/m3]	Standard Adhesive	Commercial Premium Carpet Adhesive
Backing	Nexus® Modular	Pattern Repeat	N/A	Standard Warranties	Encore SD Ultima Lifetime Fiber PremierBac Plus Commercial Premium Broadloom Adhesive Lifetime
Dye Method	Solution Dyed	Gauge	1/10 [3.94 rows/cm]	Optional Warranties	Edure Plus Lifetime TitanBac Plus Lifetime
Fiber Type	Encore® SD Ultima® [with recycled content]	Stitches Per Inch	8 stitches/in [3.15 stitches/cm]		
Face Weight	20 oz./sy [678 grams/m2]	Standard Width	24" x 24" approx. [60.96cm x 60.96cm]		

CLASSIFICATION:
SEVERE



INCOGNITO | 7069 | 24" X 24" MODULAR



COLOR 1837
operative



COLOR 1838
espionage



COLOR 1839
classified



COLOR 1840
code word



COLOR 1841
intelligence



COLOR 1842
infiltrate



COLOR 1843
wiretap



COLOR 1844
sleeper



COLOR 1845
cryptic

Construction	Textured Patterned Loop
Backing	Nexus® Modular
Dye Method	Solution Dyed
Fiber Type	Encore® SD [with recycled content]
Face Weight	29 oz./sy [983 grams/m2]

Pile Density	8717 oz./y3 [323.23 kg/m3]
Pattern Repeat	N/A
Gauge	1/12 [4.72 rows/cm]
Stitches Per Inch	12 stitches/in [4.72 stitches/cm]
Standard Width	24" x 24" approx. [60.96cm x 60.96cm]

Standard Adhesive	Commercial Premium Modular Adhesive
Optional Adhesive	Tile Tabs
Standard Warranties	Encore SD Ultima Lifetime Fiber Nexus Modular Lifetime Commercial Adhesive for Modular Carpet & LVT Lifetime
Optional Warranties	Nexus Cushion Modular Lifetime Tile Tabs Nexus Cushion Adhesive

MODULAR
INSTALLATION
METHODS



CLASSIFICATION:
SEVERE



ALTER EGO | 7070 | 24" X 24" MODULAR



COLOR 1837
operative



COLOR 1838
espionage



COLOR 1839
classified



COLOR 1840
code word



COLOR 1841
intelligence



COLOR 1842
infiltrate



COLOR 1843
wiretap



COLOR 1844
sleeper



COLOR 1845
cryptic

Construction	Textured Patterned Loop	Pile Density	8717 oz./y3 [323.23 kg/m3]	Standard Adhesive	Commercialon Premium Modular Adhesive
Backing	Nexus® Modular	Pattern Repeat	N/A	Optional Adhesive	Tile Tabs
Dye Method	Solution Dyed	Gauge	1/12 [4.72 rows/cm]	Standard Warranties	Encore SD Ultima Lifetime Fiber Nexus Modular Lifetime Commercialon Adhesive for Modular Carpet & LVT Lifetime
Fiber Type	Encore® SD [with recycled content]	Stitches Per Inch	12 stitches/in [4.72 stitches/cm]	Optional Warranties	Nexus Cushion Modular Lifetime Tile Tabs Nexus Cushion Adhesive
Face Weight	29 oz./sy [983 grams/m2]	Standard Width	24" x 24" approx. [60.96cm x 60.96cm]		

MODULAR INSTALLATION METHODS



CLASSIFICATION: SEVERE



COMMERCIALON® PREMIUM CARPET ADHESIVE

- Minimal Odor
- Low VOC's
- Solvent-free
- Environmentally friendly

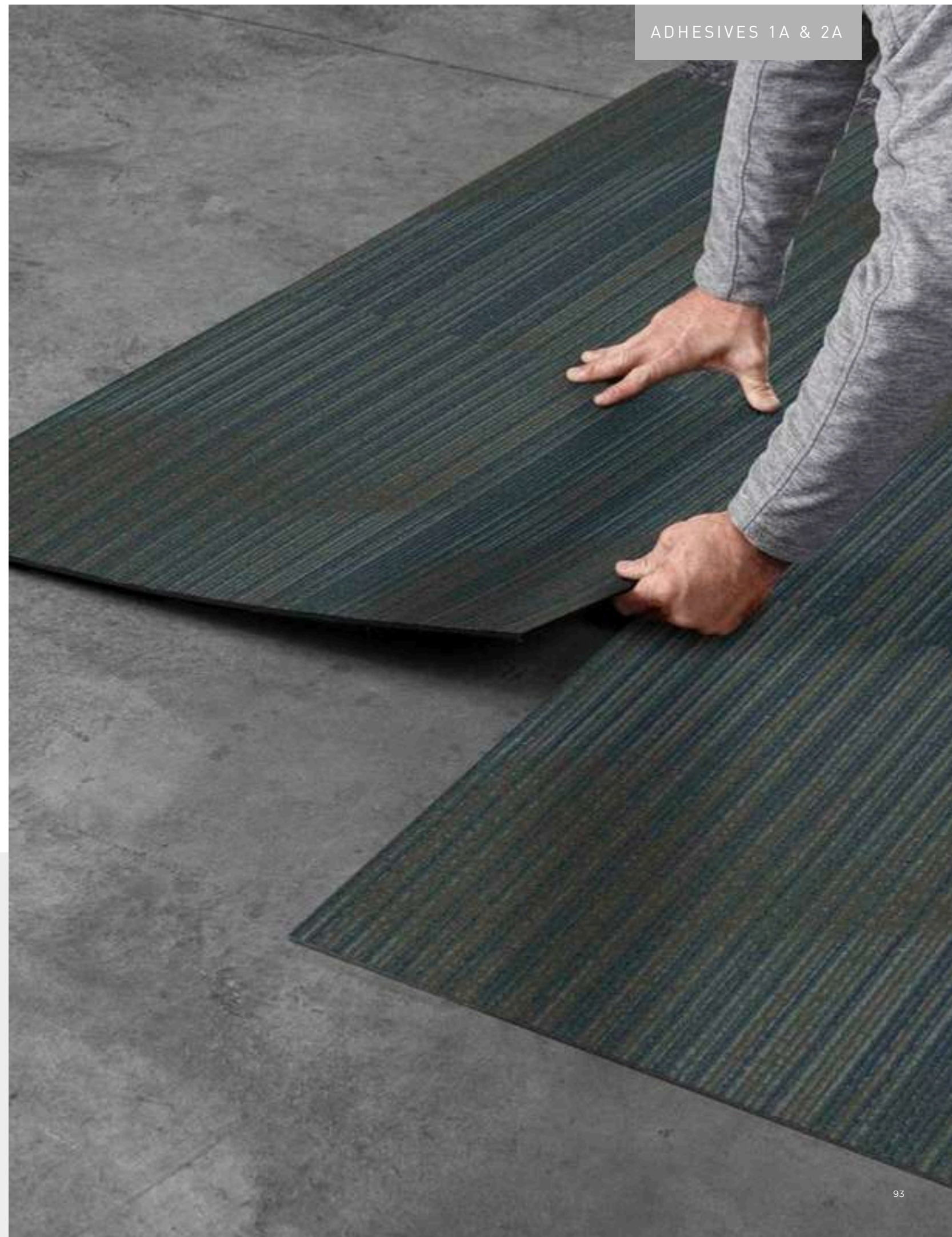
COMMERCIALON® PREMIUM MODULAR TILE AND LVT ADHESIVE

- Pressure Sensitive
- Solvent-free
- Environmentally friendly



PREMIUM BROADLOOM CARPET ADHESIVE // A2904 // 1A

NEXUS MODULAR ADHESIVE // A1334 // 2A



TILETABS® MODULAR CARPET CONNECTORS | NTAB

J+J Flooring's high-tack TileTabs allow installation and replacement of flooring without the use of spread adhesives. With our TileTabs, simply peel, place and press. They are odorless, glue-VOC-free, and eliminate drying time, making your space available for immediate traffic and occupancy.

STABILITY

TileTabs grip strips provide a low-tack, high-shear boundary layer designed specifically to stabilize the installation and prevent creep in high traffic areas. These are definitely valuable at entry points where TileTabs can be used on J+J Flooring's walk-off modular carpet to make walk-off mats that can be placed over hard surfaces like stone, tile and terrazzo.

MOISTURE

TileTabs can be used on J+J Flooring's Nexus Modular and J+J Flooring's 5mm LVT. When used on our Nexus Modular or our 5mm LVT, with our Commercialon Premium Sealer, it will perform in elevated RH slabs up to 99% and a pH of 11.

DESIGN & COLOR

TileTabs opens up a world of design possibilities like assembling carpet tiles into functional area rugs. With TileTabs, you're not locked into permanent wall-to-wall carpet solutions, but rather free to explore inspiring color and design combinations for a permanent or temporary new look.

ENVIRONMENTAL

With J+J Flooring's TileTabs system less is more: less mess and less waste means a reduced environmental footprint. TileTabs eliminate the need for cumbersome materials and tools like wet adhesive spreads thus eliminating harmful VOCs from the installation process.



PRICING | AIR FORCE | CONTRACT #FA800323C0004 | 1/19/26 - 1/18/27

ORGANIC SMALL SCALE TILE & PLANK 1"-12"	STYLE #	STYLE NAME	DIMENSIONS	PRICE	CUSHION OPTION	TITANBAC
20S-T	7587	Fractured Plaid Modular Tile	24x24	\$31.77	\$37.27	-
30S-T	7718	Obsidian Modular Tile	24x24	\$37.83	\$43.33	-
10S-P	7602	Adapt Plank	18x36	\$25.76	\$31.26	-
20S-P	7081	Boucle Plank	12x48	\$27.11	\$32.61	-

ORGANIC MEDIUM SCALE TILE & PLANK 12"-18"	STYLE #	STYLE NAME	DIMENSIONS	PRICE	CUSHION OPTION	TITANBAC
10M-T	7096	Intrinsic Modular	24x24	\$16.20	\$21.70	-
20M-T	7586	Twill Weave Modular	24x24	\$31.77	\$37.27	-
30M-T	7592V	Serene Modular	24x24	\$29.25	\$34.75	-
30M-P	7030	Etched Plank	18x36	\$28.54	\$34.04	-

ORGANIC MEDIUM SCALE TILE & PLANK 18" +	STYLE #	STYLE NAME	DIMENSIONS	PRICE	CUSHION OPTION	TITANBAC
10L-T	7685	Reveal Modular	24x24	\$21.48	\$26.98	-
20L-T	7571	Herbalist Modular	24x24	\$22.79	\$28.29	-
30L-T	7593V	Tranquil Modular	24x24	\$29.25	\$34.75	-
10L-P	7083	Tweed Plank	12x48	\$27.11	\$32.61	-
20L-P	7684	Reverie Plank	12x48	\$26.02	\$31.52	-
30L-P	7062	Organic Raku Plank	18x36	\$29.26	\$34.76	-

RANDOM PATTERN TILE & PLANK	STYLE #	STYLE NAME	DIMENSIONS	PRICE	CUSHION OPTION	TITANBAC
10CR-T	7246	Impulse III Modular Tile	24x24	\$22.19	\$27.69	-
20CR-T	7037	Passages Modular Tile	24x24	\$18.22	\$23.72	-
30CR-T	7099	Craftwork Modular Tile	24x24	\$37.59	\$43.09	-
10CR-P	7600	Advance Plank	18x36	\$25.76	\$31.26	-
20CR-P	7480	Cumulus	18x36	\$26.14	\$31.64	-
30CR-P	7479	Color Zone	18x36	\$28.41	\$33.91	-

ORGANIC ROLL OPTION	STYLE #	STYLE NAME	DIMENSIONS	PRICE	CUSHION OPTION	TITANBAC
R-Small (OS)	2433	Impulse III Broadloom	12'	\$13.70	\$19.20	\$15.70
R-MED (OM)	3081	Boucle Broadloom	12'	\$20.10	\$25.60	\$22.10
R-LG (OL)	3037	Passages 26 Broadloom	12'	\$14.02	\$19.52	\$16.02

GEOMETRIC SMALL SCALE TILE & PLANK 1"-12"	STYLE #	STYLE NAME	DIMENSIONS	PRICE	CUSHION OPTION	TITANBAC
5GS-T	7025	Fiction Modular Tile	24x24	\$24.20	\$29.70	-
6GS-T	7202	City Blocks Modular Tile	24x24	\$22.07	\$27.57	-
5GS-P	7084	Narrative II Plank	12x48	\$24.57	\$30.07	-
6GS-P	7478	Zephyr Plank	18x36	\$26.14	\$31.64	-

GEOMETRIC MEDIUM SCALE TILE & PLANK 12"-18"	STYLE #	STYLE NAME	DIMENSIONS	PRICE	CUSHION OPTION	TITANBAC
5GS-T	7025	Fiction Modular Tile	24x24	\$24.20	\$29.70	-
6GS-T	7202	City Blocks Modular Tile	24x24	\$22.07	\$27.57	-
5GS-P	7084	Narrative II Plank	12x48	\$24.57	\$30.07	-
6GS-P	7478	Zephyr Plank	18x36	\$26.14	\$31.64	-

GEOMETRIC LARGE SCALE TILE & PLANK 18" +	STYLE #	STYLE NAME	DIMENSIONS	PRICE	CUSHION OPTION	TITANBAC
4GL-T	7072	Well Versed Modular Tile	24x24	\$20.02	\$25.52	-
6GL-T	7074	Elevated Modular Tile	24x24	\$21.66	\$27.16	-
4GL-P	7621	Journey Plank	18x36	\$20.02	\$25.52	-
6GL-P	7064	Outfitter Plank	18x36	\$16.20	\$21.70	-

RANDOM PATTERN TILE & PLANK	STYLE #	STYLE NAME	DIMENSIONS	PRICE	CUSHION OPTION	TITANBAC
4GCR-T	7438	Vertex Modular Tile	24x24	\$15.99	\$21.49	-
5GCR-T	7199	Chromatic Modular Tile	24x24	\$37.59	\$43.09	-
6GCR-T	7479	Color Zone Modular Tile	24x24	\$28.41	\$33.91	-
4GCR-P	7914	Jack Plank	12x48	\$20.18	\$25.68	-
5GCR-P	7071	Impromptu Plank	12x48	\$24.19	\$29.69	-
6GCR-P	7600	Advance Plank	18x36	\$25.76	\$31.26	-

GEOMETRIC ROLL OPTION	STYLE #	STYLE NAME	DIMENSIONS	PRICE	CUSHION OPTION	TITANBAC
R-Small (GS)	2439	Vertex 26 Broadloom	12'	\$11.91	\$17.41	\$13.91

COORDINATING PRODUCTS	STYLE #	STYLE NAME	DIMENSIONS	PRICE	CUSHION OPTION	TITANBAC
8CT/Heathered-Tweed	7037	Passages Modular	24x24	\$18.22	\$23.72	-
9CW/Walk-Off	7069/7070	Incognito/Alter Ego Walkoff	24x24	\$38.19	n/a	-

ADHESIVES	STYLE #	STYLE NAME	DIMENSIONS	PRICE	COVERAGE
1A	A2904	Premium Carpet Adhesive (Broadloom)	4-Gallon Pail	\$53.65	40 SY
2A	A1334	Nexus Modular Adhesive	4-Gallon Pail	\$145.80	120 SY
3A	NTAB	Tile Tabs Modular Carpet Connectors Nexus	Box	\$145.80	120 SY

All orders must be sent to contract.team@engineeredfloors.com. Must include: Ordering DoDAAC, Ship To DoDAAC, and Contract Number. (This information is found on the PO issued by the Air Force to the FC, unless GPC transaction, then need Base, GPC Holder name)



CONTRACT #FA800323C0004

CONTRACT TEAM

P: 800 241 4586

E: USAF@ENGINEEREDFLOORS.COM



P.O. BOX 2207
DALTON, GA 30722
P 800 241 4586
JJFLOORING.COM