



GLOBAL SOLUTIONS

Flooring, Simplified.



FLOORING GROUP

carpet | lvt | kinetex

IF THERE'S ONE THING WE KNOW, IT'S FLOORING

Style. Quality. Performance. Lead times. Timelines. Budgets.

Whether you're managing a new build or a series of remodels, flooring alone can be a lot to manage. Fortunately, if there's one thing we know how to handle, it's flooring.

We're the oldest exclusive manufacturer of commercial carpet in the US. We've invested generations into designing and innovating materials, processes, products and services that meet the evolving needs of customers around the world. So you can focus on what you do best: your business.

A LITTLE ABOUT US...

A lot can change in 60 years, and flooring solutions have come a long way since J+J Flooring Group opened our doors in 1957. What hasn't changed is our commitment to improving our products and better serving people.

As the commercial flooring division of Engineered Floors, LLC, we are part of the third largest carpet company in North America. We are poised to continue delivering on our goals, shaping inspiring commercial workspaces through:

- + Procurement**—Our size positions us to negotiate for more competitive pricing on supplies, including raw materials, meaning lower costs for our customers.
- + Resources**—Some of the sharpest minds in the industry lead our design and operations teams to guide the development and delivery of our leading-edge flooring solutions.
- + Technology**—We invest in and leverage the most efficient and advanced technology, such as our new state-of-the-art modular carpet facility, to create sustainable, high quality products built to stand the test of time.
- + Product Selection** – With a versatile combination of commercial flooring types, we provide innovative solutions based on the unique challenges, aesthetic and performance needs of your project.



MEET MR. ROBERT E. SHAW

In 1985 the company bearing the name of brothers Robert and Bud Shaw became the first carpet manufacturer to break into the Fortune 500. Shortly after, Mr. Shaw became CEO of Shaw Floors and oversaw a period of massive growth for the company - as well as its sale in 2001. Mr. Shaw stayed on as CEO until he retired in 2006, but that was just the beginning of the story.

Fast forward to 2008 and the struggles of the nationwide housing crisis. Seeing local unemployment rates soar above 25%, Mr. Shaw found a way to help. He decided to come out of retirement and founded Engineered Floors, LLC, in 2009.

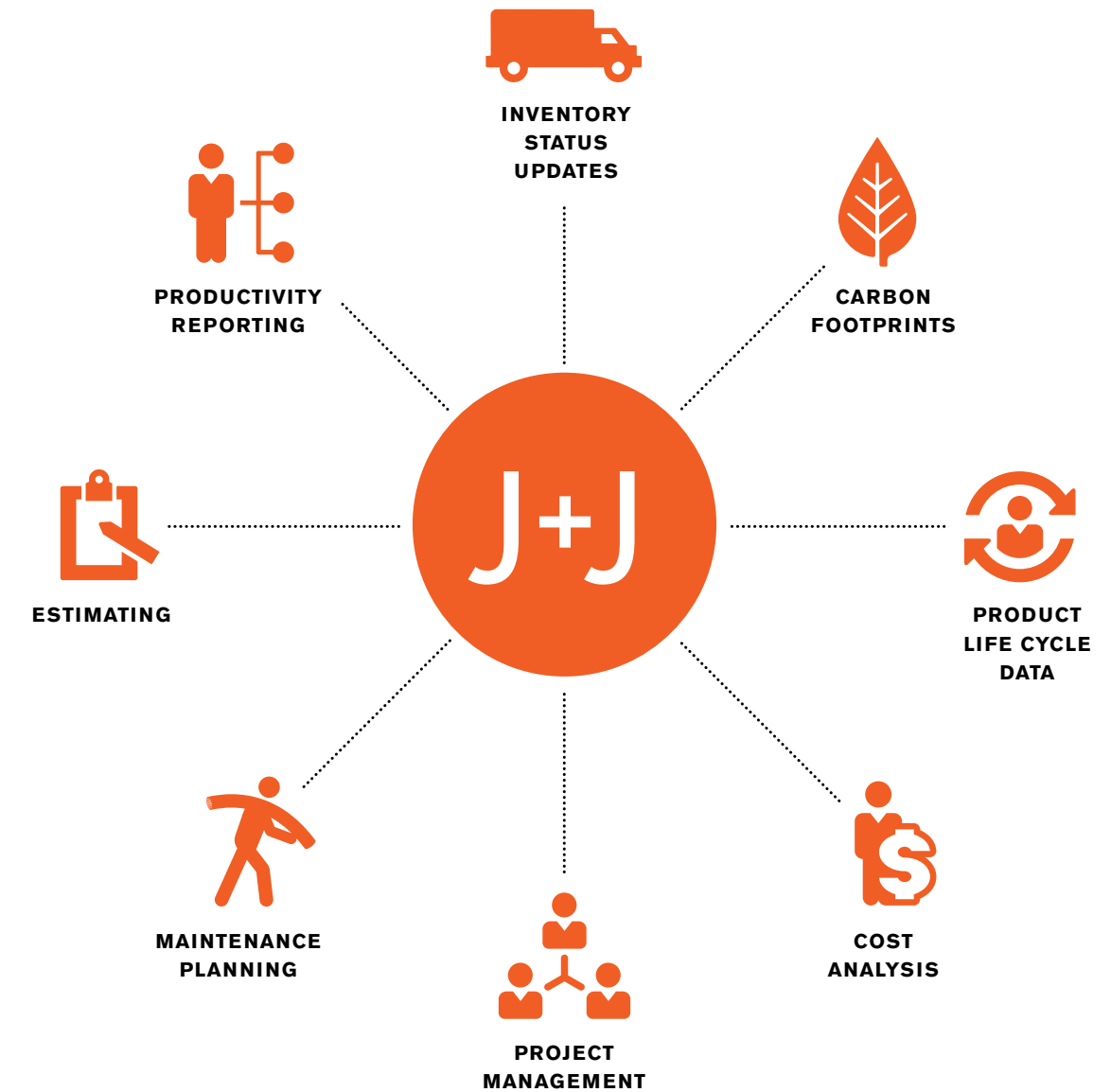
Instead of using his past success as a model for growth, Mr. Shaw knew that thriving flooring companies only get that way by doing what others haven't done or what they have deemed impossible. He began fresh with Engineered Floors, building from the ground up under the company promise of "Innovation Reinvented."

Mr. Shaw instilled a drive to identify and implement new technologies, streamline production, integrate operations under one roof, and guided the development of Engineered Floors' product and market strategies.

Today, under Mr. Shaw's leadership, Engineered Floors has quickly grown to be the third largest carpet manufacturer in the United States.

ONE PARTNER, FULL SERVICE

The Global Solutions Program is a specialized team designed to support our multi-national, multi-location customers with personalized account management, dedicated, one-on-one support and a comprehensive suite of turnkey services tailored to the needs of high volume organizations and operations.



You choose the products: we'll take care of the details.

- + Competitive pricing contracts
- + Custom product design
- + Ability to bundle other products
- + Turn Key Services
- + Product specification and standards management
- + Personal web portal access for easy account management
- + Personalized day-to-day account service, including:
 - Carpet reclamation coordination
 - Estimating and take-offs
 - Coordination & furniture lifting
 - Inventory management & usage reporting
 - Installation, logistics, planning & support
 - Maintenance standards, training & support
 - Private labeling
 - Production coordination
 - 3D digital rendering
 - Shipping & delivery coordination
 - Standards development & implementation
 - Stocking programs
 - Quality assurance
 - Quarterly performance reviews & reporting

SOLUTIONS FOR EVERY ONE (OF YOUR LOCATIONS)

carpet | lvt | kinetex

Our Global Solutions Program gives you direct access to our complete portfolio of high-performance commercial flooring products. And when additional flooring products are required, we keep the process simple by bundling those products according to your standards and specifications – so you have just one point of contact and one source from start to finish.

- + Ideal for corporate spaces, public areas, retail settings or living spaces, **J+J Broadloom Carpet** can be combined with a range of backing options to address concerns specific to a particular installation environment, from moisture to underfoot comfort.
- + With an array of creative installation opportunities, **J+J Modular Carpet** creates the appearance of a custom flooring design. Coordinate patterns or styles, or combine with broadloom or other surfaces to define functional areas, support wayfinding and facilitate engagement within a space.
- + Combining key elements of soft surface flooring with the attributes of hard surface, **Kinetex®** advanced textile composite flooring is in a category unto itself – and a smart option for spaces that benefit from the warmth of carpet, but demand the performance of hard surface.

- + J+J provides some of the most advanced **LVT** products in the market. Whether you're seeking a durable and affordable classic hardwood aesthetic or innovative, modern designs, J+J has a luxury vinyl tile solution for your project applications.

- + **Entry-way systems** and walk-off tiles facilitate flooring maintenance and care by creating critical transition areas that help prevent dirt and moisture from tracking onto adjacent flooring.

Need help finding the right flooring for your project? Our experienced flooring professionals will work with you to develop the best combination of products based on your standards, requirements and project parameters – from acoustics and comfort to budgets, timelines and branding.





MADE-TO-ORDER DESIGN

CUSTOM DESIGN ON YOUR TIMELINE

With in-house yarn extrusion and large-scale sampling equipment on site, we can produce and deliver custom strike-offs quickly and easily – so you get made-to-order products as quickly as running line.

When standard running line products aren't the answer, our design team is standing by to help create custom solutions that will take your spaces from ordinary to extraordinary.

Our experienced design team will work with you to create carpet that coordinates with your organization's branding program, matching colors and developing custom designs that align with a cohesive brand strategy – and reinforce your brand experience across one location – or one thousand.

PRODUCTS THAT ARE ALWAYS ONE STEP AHEAD

We're always looking for new opportunities to improve the way our floors enhance the spaces you create. After all, flooring can influence the way customers shop, employees engage, students learn and patients heal. And the materials and processes we use can have a big impact on human health and the environment, too.

Our legacy of innovation includes a number of significant industry milestones, from becoming the first manufacturer to integrate yarn extrusion into our operations, to the creation of Kinetex® advanced textile composite flooring and becoming the first manufacturer in the industry to achieve zero waste to landfill third-party certification.

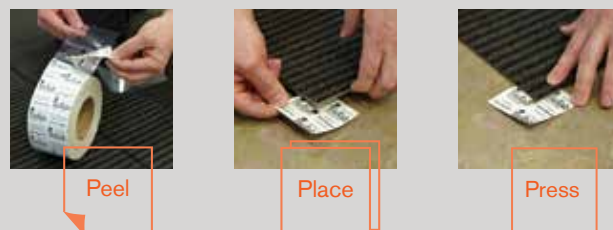
We've also generated a number of product solutions designed to improve the quality, performance and long-term appearance of our floors, including our portfolio of performance backing systems and a variety of leading fiber treatments, including:

- + **ColorLoc® Plus** – bleach and stain resistant fiber protection
- + **Prosept®** – antimicrobial treatment inhibits growth of bacteria and fungi that can degrade carpet performance and appearance
- + **Protex®** soil release – a proprietary technology applied to fiber to impede soiling and improve cleanability
- + **Sentir®** odor blocking technology – a self-renewing treatment designed to control or eliminate offensive odors

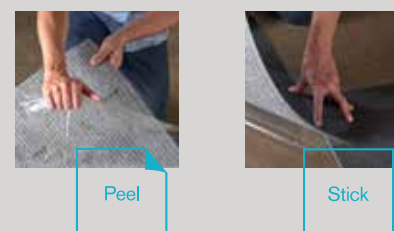


TileTabs, our glue-free solution for modular carpet, eliminates the need for wet adhesive spreads and extended drying time— which is a significant cost and time benefit.

Approximately 120 square yards of modular carpet can be installed using a single roll of odor-free and VOC-free TileTabs. Less mess and minimal waste mean a reduced environmental footprint as well.



PreFix offers a quick installation solution for all Kinetex textile composite flooring products. The release liner easily peels away to reveal a series of pre-applied adhesive strips that securely anchor the Kinetex module in place.



TILETABS®

Peel, Place & Press: TileTabs offer a time saving solution for carpet tile installation. TileTabs are high tack adhesive tabs that connect J+J carpet tiles together, resulting in a continual layer that gently grips existing flooring.

(TileTabs should not be used with Kinetex products)



kinetex®

How will the products we create affect the people who use them and the world around us? Answering that question ultimately led us to create Kinetex, an advanced textile composite that represents a whole new flooring category.

A smart flooring alternative to hard surface, Kinetex combines the best of both worlds — bringing you the key attributes of soft surface with the long-wearing performance characteristics of hard surface options. Kinetex delivers an unprecedented performance across a range of attributes critical for high-demand commercial, retail, healthcare, education and institutional applications.

ACOUSTICS:

With one of the highest Noise Reduction Coefficients and Impact Insulation Classifications of any commercial flooring product, Kinetex dramatically reduces both airborne and structure-borne noise.

COMFORT:

High density backing and a soft textile surface give Kinetex exceptional anti-fatigue properties and the potential to absorb energy, reducing repetitive foot stress and injuries related to walking and moving frequently from place to place.

DURABILITY:

With outstanding dimensional stability and crush resistance, Kinetex has been tested to withstand over 5 million foot traffic events — more than the total number of people who have attended the Super Bowl since its first game.

HEALTH:

Kinetex surpasses California's 01350 requirements for low VOC emissions and substantially minimizes airborne particles by sequestering common allergens, irritants and dust.

SAFETY:

Kinetex's unique construction creates one of the most slip-resistant flooring surfaces ever tested, wet or dry. Its low profile also provides minimal rolling resistance, potentially reducing injuries from pushing and pulling.

SUSTAINABILITY:

Kinetex has a 50 percent lower environmental impact compared to other commercial floorings. And with more than 55 percent recycled content, Kinetex is NSF/ANSI 140 Platinum certified — plus, it can be recycled as easily as an aluminum can.

MAINTENANCE:

Kinetex cleans easily with vacuuming, encapsulation cleaning or hot water extraction (in areas prone to heavy soiling). Bleach resistant and resistant to most challenging staining agents, Kinetex retains less water than carpet and dries quickly.

MOISTURE TOLERANCE:

The most common subfloor, concrete can release excessive moisture and destroy floor covering systems — unless costly precautions are taken before installation. But moisture mitigation isn't necessary with Kinetex: its breathable nature allows moisture to pass through its backing, instead of trapping it underneath. That means flooring failures due to moisture can be a thing of the past — and you can save money by avoiding expensive mitigation.



PERFORMANCE YOU CAN STAND BY (AND ON)



You need a lot from your floors, and it's our job to make sure they deliver. After all, in high-traffic, high-demand commercial environments, you need flooring you can count on to perform, no matter the conditions.

Engineered to retain their appearance even when the going gets tough, all of our carpet and Kinetex products meet world-class standards for quality, durability and wearability. And we back them up with strong lifetime performance warranty packages that give you peace of mind from the first step, to the ten millionth.



WHEREVER YOU ARE, WE'RE RIGHT THERE

Sourcing the right flooring for your facilities is one thing. Getting it in on time and on budget can be another. Product availability and on time delivery can make or break a build-out schedule – and when multiple projects are in play, that's no small concern.

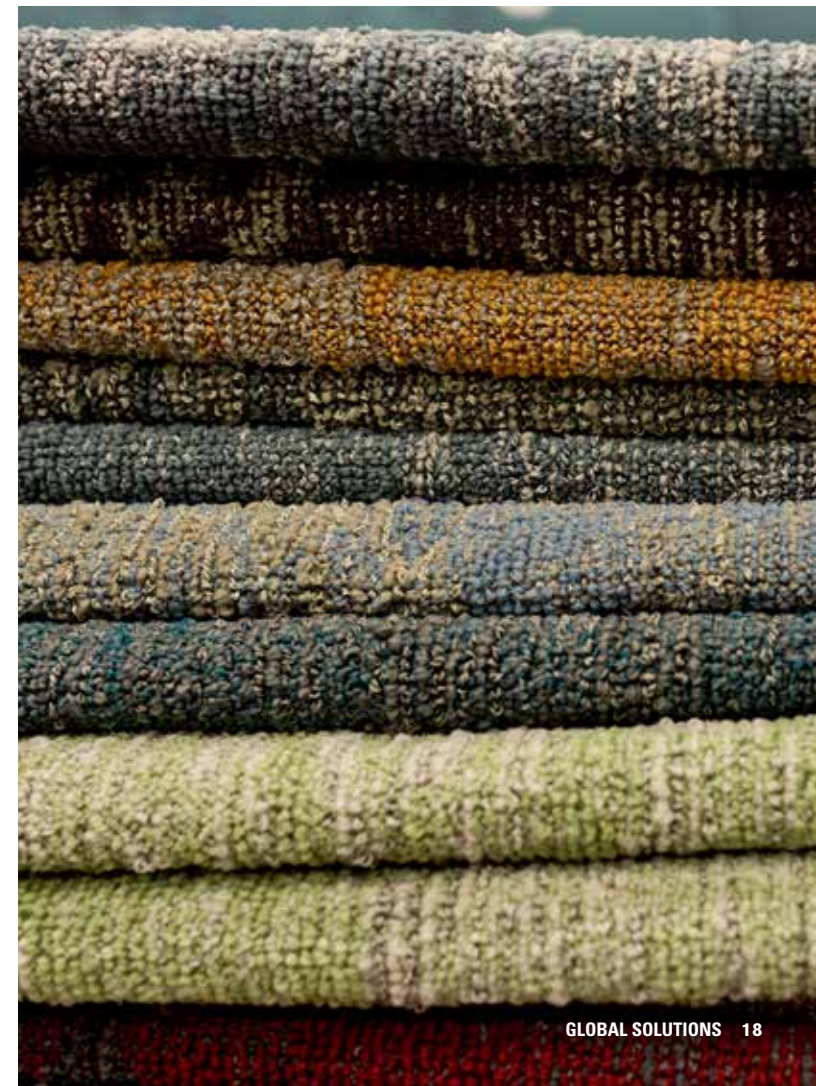
Through our stocking, inventory management and freight routing services, we ensure the products you use most are ready when you need them. And we'll work with you to align delivery schedules with often-changing build-out timelines so you can rest easy knowing your flooring will be there when – and where – you need it.

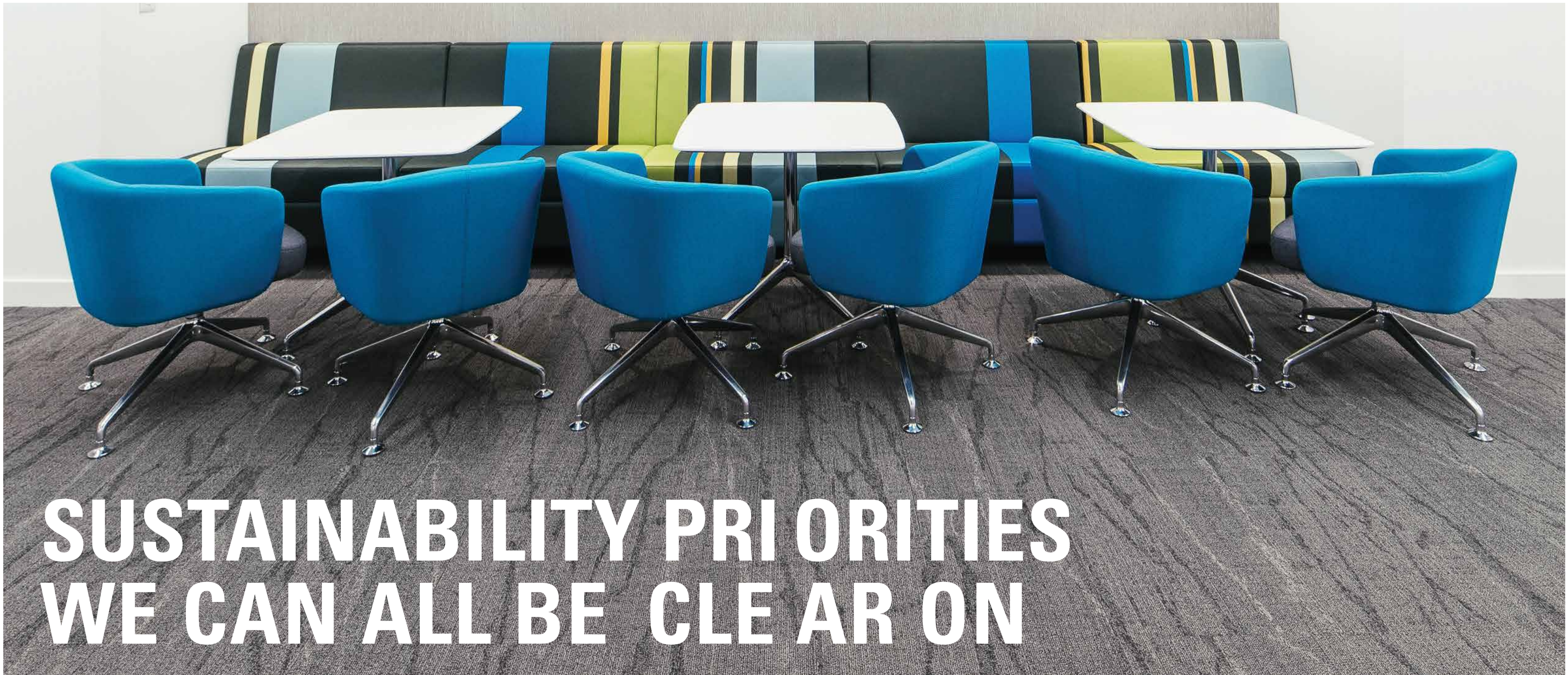
Whether you're next door or on the next continent, your personal account representative and our customer relations team is there to handle every aspect of your flooring procurement and management. From in-person installation planning and coordination to on-site installation management, to establishing maintenance schedules and providing maintenance training, we're right there with you every step of the way.

ONE LOCATION, ONE MILLION SQUARE FEET OF AT-YOUR-SERVICE

With more than a million square feet of manufacturing space at our disposal, plus a highly vertically integrated operation all centered in one location, we have the agility and the horsepower to efficiently accommodate your needs and requirements – even when expectations are high and lead times are tight.

Better yet, our one-campus model means your representative can stay personally connected to every aspect of your flooring account. From yarn extrusion to production, packaging to freight routing and distribution (not to mention inventory management), we're right there to keep a close eye on your products all the way from start to finish. To put it simply, we'll always know the status of every aspect of your flooring – and so will you.





SUSTAINABILITY PRIORITIES WE CAN ALL BE CLEAR ON

From supply chain engagement to responsible raw materials, manufacturing to recycling, sourcing flooring that is beautiful, durable and sustainable can be a daunting task. That's why we keep our sustainability priorities simple: conserve the resources we use, responsibly source the materials we need, and minimize the social and environmental effects of our operations and our products.

Since 2008, we've used ISO 14001 certification to ensure compliance with globally recognized environmental performance, and we make every effort to be as transparent as possible about all our activities and impacts.

We use third-party verified* Life Cycle Assessment data based on ISO standards and category rules to create Environmental Product Declarations (EPDs) and Health Product Declarations (HPDs) for our carpet products with PremierBac, TitanBac and Nexus backing systems and all Kinetex products.

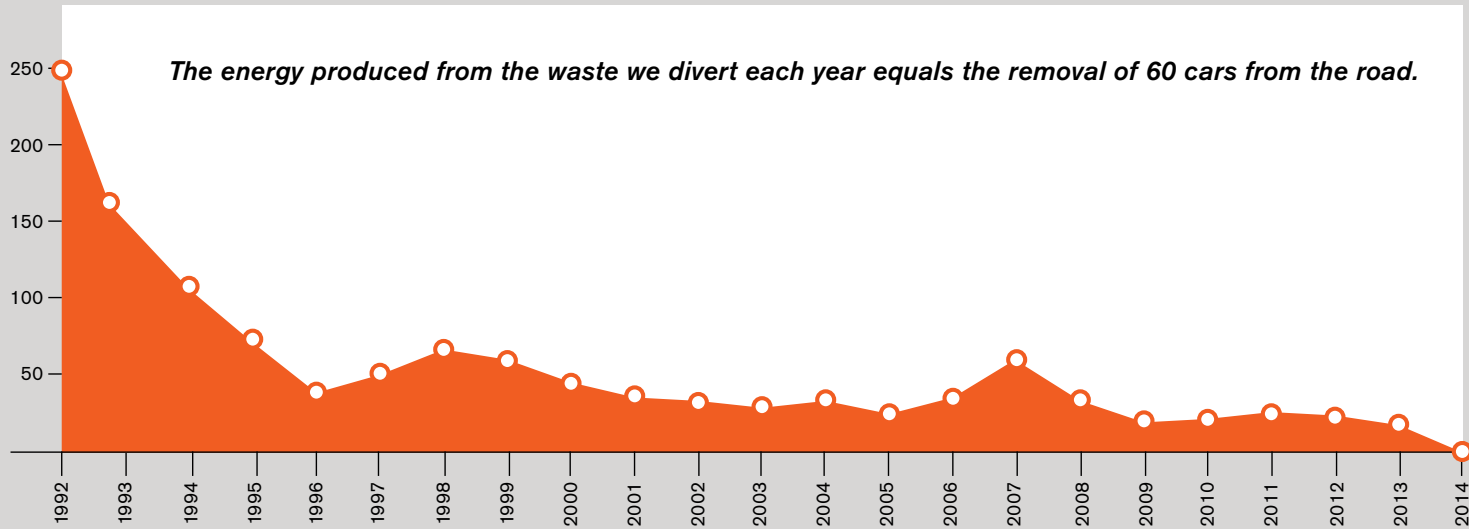
In addition to helping contribute to the US Green Building Council Leadership in Energy and Environmental Design (LEED) rating system, our flooring also meets key world-class sustainability certifications and standards, including NSF/ANSI 140, CRI Green Label Plus and BREEAM (UK.) We also participate in Pharos and Portico (Google's healthy materials tool) for our Kinetex products.

ZERO WASTE? WE'RE ALREADY THERE

Reducing and eliminating the waste we send to landfill has been one of our sustainability priorities for more than two decades. Now, we're the first flooring manufacturer in the US to receive third-party certification* for diverting all waste from our primary manufacturing campus away from landfill. Any waste we can't recycle (approximately .3% of all waste) is directed to country's largest energy-from-waste facility.

In addition to our campus-wide waste reduction efforts, we also offer our R4 (return, reuse, recycle, reduce) program for the recycle/reuse of our samples and architect folders. Our R4 (return, reuse, recycle, reduce) program gives US customers the chance to keep unwanted materials from their libraries out of the landfill by simply returning them using our pre-paid shipping labels and sample return bags..

J+J FLOORING GROUP WASTE INTENSITY • LBS OF LANDFILL/1000 YD²



*Assessed by Green Circle, LLC.



R4 Returned Samples



FLOORING GROUP

carpet | lvt | **kinetex**

818 J&J Drive
P.O. Box 1287
Dalton, GA 30722
jjflooringgroup.com

Cover: **Modular Carpet**, *Inception*