

INVISION

OUTSIDE IN COLLECTION

CANOPY / GRASSLAND / MEADOW



From our establishment in 1957, we have become one of the oldest exclusive manufacturers of *commercial flooring* in the United States. As one of the largest privately held mills, our FAMILY-OWNERSHIP provides a *heritage* of proven performance and expansive industry knowledge. Most importantly, our focus has always been on *people...* ensuring them that our products deliver the highest levels of BEAUTY, PERFORMANCE and DEPENDABILITY.

INVISION kinetex

(cover) Canopy Remedy, broadloom.

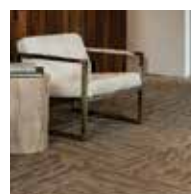
contents



6

CANOPY

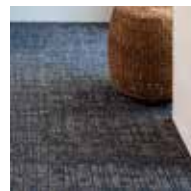
An organic, large-scale pattern mirroring the pockets of light and dark looking up through a shade tree.



16

GRASSLAND

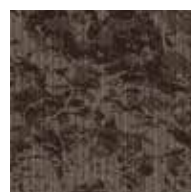
Patterns of wispy grass come and go throughout the demiplanks of this pattern.



26

MEADOW

Plush fields of feathery grass and shadows of flora are represented in this tranquil design.



COLORLINE OVERVIEW	36
CORPORATE PROGRAMS	37
PRODUCT DETAILS	38
PRODUCT FLEXIBILITIES	39



Between the earth and sky lies a wealth of natural artistry that delights and inspires. J+J draws from the basic elements of land and air to find our muse for the new collection, ***Outside In.***

Organic vignettes of silhouetted grassy terrains and sunlit tree mantles are the foundation for this collection which features two modular and one broadloom pattern in 13 colors.

At J+J, the pursuit of beauty is infinite.



FLOORING GROUP

INVISION **kinetex**



canopy

(right) **Canopy Solace**, broadloom.

Canopy broadloom features a large scale pattern in which pockets of dark and light intertwine as the sun peaks through the broad crown of the perfect shade tree. Just as one would escape from the summer sun, Canopy's organic design and intriguing use of color create a relaxing retreat.

Canopy pairs well with Grassland and Meadow or can make a strong statement on its own.







(page 8 and above) *Canopy Lotus*

SPECIFICATION

style	canopy 6597 broadloom
construction	textured patterned loop
fiber type	Encore® BCF nylon w/ColorLoc® Plus
dye method	solution/yarn dyed
ounce weight	21 oz (712 grams)
gauge	1/12 (4.72 rows/cm)
backing	PremierBac® Plus
size	12 ft (3.66m)





style 6597 broadloom
color 2085
lotus



style 6597 broadloom
color 2086
bliss



style 6597 broadloom
color 2087
calm



style 6597 broadloom
color 2088
harmonic



style 6597 broadloom
color 2089
tranquil



style 6597 broadloom
color 2090
remedy



style 6597 broadloom
color 2091
serene



style 6597 broadloom
color 2092
clear



style 6597 broadloom
color 2093
stillwater



style 6597 broadloom
color 2094
breeze



style 6597 broadloom
color 2095
escape



style 6597 broadloom
color 2096
solace



style 6597 broadloom
color 2097
shadow





(above) *Canopy Lotus.*
 (page 12) *Canopy Solace.*
 (pages 14 & 15) *Canopy Remedy.*







grassland

(right) **Grassland Solace**, *herringbone*.

From savannas to prairies, grasslands make up an expansive portion of the earth's surface. The 12" x 48" demi planks of Grassland mimic the wispy blades of grass blowing through these rolling terrains. Each plank comes together to create a serene flooring installation.

While Grassland can bode well on its own, it can also create balance when used with the more dominant Canopy and more relaxed Meadow - just as the sprawling areas of grasslands serve as a transitional biome between two landscapes.







(page 18) Grassland *Stillwater*, basketweave.
 (left) Grassland *Solace*, ashlar.
 (below) Grassland *Harmonic*, parquet.



SPECIFICATION

style	grassland 7098 modular demi-plank
construction	textured patterned loop
fiber type	Encore® BCF nylon with ColorLoc® Plus
dye method	solution/yarn dyed
ounce weight	22 oz (746 grams)
gauge	1/12 (4.72 rows/cm)
backing	Nexus® Modular
size	12" x 48" (30.48 cm x 122 cm)





style 7098
color 2085
lotus



style 7098
color 2086
bliss



style 7098
color 2087
calm



style 7098
color 2088
harmonic



style 7098
color 2089
tranquil



style 7098
color 2090
remedy



style 7098
color 2091
serene



style 7098
color 2092
clear



style 7098
color 2093
stillwater



style 7098
color 2094
breeze



style 7098
color 2095
escape



style 7098
color 2096
solace



style 7098
color 2097
shadow



(page 23) *Grassland Remedy*, basketweave. (page 24 & 25) *Grassland Stillwater*, parquet.









meadow

(page 27) **Meadow Remedy**, monolithic
and **Grassland Remedy**, ashlar.

The openness of a meadow filled with splashes of wildflowers and the blue sky gleaming above is a summertime treat. Each of the feathery grasses and shadows of abundant flowers are translated into the 24" x 24" tiles of Meadow. Each tile echoes the beauty of a tranquil blanket of flora and the organic, medium scale pattern allows for an effortless flooring design.

Meadow pairs nicely with both Canopy broadloom and Grassland demi-plank.





(above) **Meadow Lotus**, quarter turn.
 (page 29) **Meadow Stillwater**, brick.





SPECIFICATION

style	meadow 7097 modular
construction	textured patterned loop
fiber type	Encore® BCF nylon w/ColorLoc® Plus
dye method	solution / yarn dyed
ounce weight	21 oz (712 grams)
gauge	1/12 (4.72 rows/cm)
backing	Nexus® Modular
size	24" x 24" (61 cm x 61 cm)





style 7097
color 2085
lotus



style 7097
color 2086
bliss



style 7097
color 2087
calm



style 7097
color 2088
harmonic



style 7097
color 2089
tranquil



style 7097
color 2090
remedy



style 7097
color 2091
serene



style 7097
color 2092
clear



style 7097
color 2093
stillwater



style 7097
color 2094
breeze



style 7097
color 2095
escape



style 7097
color 2096
solace



style 7097
color 2097
shadow





[page 32] *Meadow Solace*, ashlar. [page 34 & 35] *Meadow Stillwater*, monolithic.





colorline overview

canopy 6597



meadow 7097



grassland 7098



corporate programs



Green Circle - Zero Waste to Landfill Operations Certification

We are proudly certified as a Zero Waste to Landfill manufacturer by GreenCircle Certified, LLC., a prominent third-party certifier of environmental claims. We are the first commercial flooring manufacturer in the United States to achieve this landfill free status and the first company in the industry to have its waste diversion efforts audited and verified by a recognized, third-party certifier.

Sustainability Progress Report

The J+J Flooring Group Sustainability Progress Report documents our journey toward increased environmental accountability and transparency. Each annual summary provides an update on sustainable advances in product development, resource reduction, certifications and progress toward the company's 20/20 Vision. To view our most recent Sustainability Progress Report visit www.jjflooringgroup.com/sustainability

Aquafinity®

This industrial water reclamation system uses a blend of filters and reverse osmosis to recover up to 50% of our dyehouse wastewater.

The reuse of wastewater in carpet dyeing is an environmentally innovative process that J+J is proud to pioneer. In fact, we anticipate annually recycling 25 to 27 million gallons of dye house wastewater with the Aquafinity System.

R4®

The R4 (return, reuse, recycle, reduce) program is specifically designed for our customers across the country to facilitate the recycling of all J+J Flooring Group samples and architect folders that are no longer needed. Print your pre-paid UPS return shipping label anytime at jjflooringgroup.com

The R4 program is available to all customers in the contiguous United States. Those in Canada, please contact us at 800-241-4586 x8020 or email answers@jjflooringgroup.com



We're on it.

The J+J Flooring Group Premium Customer Experience.

At J+J Flooring Group, you're not an account. You are a customer, and most of all a person we are privileged to serve. That outlook is fundamental to our business. It's at the core of our family-owned heritage, and this unwavering personal service is not without its structure and discipline. In fact, we call it our Premium Customer Experience, and it's a carefully crafted process by which we guarantee that our customers will get the products, services and the reliability they expect from us. We may be a very people-focused company, but those people use a disciplined and developed framework to meet and exceed our customers' expectations.

product details

FIBER

Encore® BCF Nylon with ColorLoc® Plus

Encore BCF nylon with ColorLoc Plus is manufactured to offer exceptional color, performance and appearance retention. Carpet using Encore BCF nylon with ColorLoc Plus - our patented stain resistant technology - is engineered to resist permanent staining and is backed by Lifetime Performance Warranties for stain resistance, colorfastness, color transfer, water bleed, bleach resistance and wear.

BACKINGS

PremierBac® Plus

J+J Flooring Group PremierBac® Plus is standard on Invision's broadloom products and provides superior construction to ensure solid dimensional stability for broadloom carpets.

- Stretch-in or glue-down installation
- Manufactured in an ISO 14001 certified facility
- Contains pre-consumer recycled content and contributes to LEED
- Recyclable through the J+J Flooring Group's R4 Carpet Reclamation Program

Nexus® Modular

Nexus modular products can be installed in a variety of ways and are performance engineered to be visually appealing. In addition, they are designed to accommodate your long-term flooring budget.

- Manufactured in an ISO 14001 certified facility
- Contains pre-consumer recycled content and contributes to LEED
- Recyclable through the J+J Flooring Group's R4 Carpet Reclamation Program

ADHESIVES

Commercialon® Premium Modular Adhesive

A high strength acrylic latex-based carpet adhesive specifically formulated for bonding modular PVC backed carpet to the floor. This premium adhesive is for use with all Invision Nexus Modular Tile products. This adhesive is guaranteed for the life of the installation when used in accordance with the J+J Flooring Group Carpet Installation Handbook. Commercialon Premium Modular Adhesive meets the CRI Low-VOC Emission Criteria, CRI ID# PSA-425402. Commercialon Premium Modular Adhesive is non toxic, has ultra-low odor and is antimicrobial in the dry state.

Commercialon® Premium Carpet Adhesive

Commercialon Premium Carpet Adhesive is formulated for the most demanding interior carpet installations. It forms a powerful bond with stiff and heavy backed commercial carpets directly over approved substrates. It is quick setting, features antimicrobial protection and can be removed easily. This solvent free adhesive is also low in odor, meeting the low VOC emission criteria of the CRI Green Label Plus Indoor Air Quality. Commercialon Premium Adhesive is for use with Invision broadloom PremierBac® Plus, TitanBac® Plus and Endure® Plus backing systems.

TECHNOLOGIES

ProTex® Soil Release

ProTex is a proprietary fluorochemical technology that is applied and bonded to the pile fiber to impede soiling and to improve cleanability. It is standard on all J+J Flooring Group products.

product flexibilities

OPTIONAL BACKINGS

TitanBac® Plus

Features a unique moisture management backing system for broadloom that prevents moisture from penetrating into the subfloor.

Nexus® Cushion

Nexus Cushion is a cushion backing system for modular products, offering outstanding performance and comfort underfoot.

ALTERNATIVE ADHESIVES

TileTabs®

TileTabs are high tack adhesive tabs that connect carpet tiles together, resulting in a continual layer that gently grips existing flooring. Escape typical trappings with TileTabs for a versatile, glue-free installation solution for modular carpet goods. Just peel, place, & press!

ADDITIONAL TECHNOLOGIES

ProSept® Antimicrobial

ProSept is a unique, broad-spectrum technology applied to the carpet backing system to serve a dual function: to protect the carpet from both bacterial and fungal growth and to eliminate odors associated with molds and fungi.

Sentir® Advanced Odor-Blocking Technology

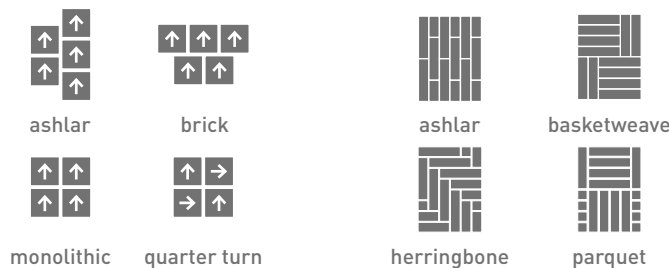
J+J Flooring Group's Sentir is a self-renewing treatment designed for the control or elimination of offensive odors associated with various indoor environments, and it is especially beneficial with odor-bearing spills. The binding properties of Sentir provide resistance to multiple cleanings and trafficking, ensuring durability.

style	meadow 7097 modular	grassland 7098 modular	canopy 6597 broadloom
construction	textured patterned loop	textured patterned loop	textured patterned loop
fiber type	100% Encore® BCF nylon with ColorLoc® Plus	100% Encore® BCF nylon with ColorLoc® Plus	100% Encore® BCF nylon with ColorLoc® Plus
dye method	solution /yarn dyed	solution /yarn dyed	solution /yarn dyed
ounce weight	21 oz/sy (712 grams/m²)	22 oz/sy (746 grams/m²)	21 oz/sy (712 grams/m²)
gauge	1/12 (4.72 rows/cm)	1/12 (4.72 rows/cm)	1/12 (4.72 rows/cm)
backing	Nexus® modular	Nexus® modular	PremierBac® Plus
size	24" x 24"	12" x 48"	12 ft
pattern repeat	N/A	N/A	72" w x 77.5" l
total thickness (nominal average)	.25 inches (0.64 cm)	.25 inches (0.64 cm)	.28 inches (0.71 cm)
special technology	ProTex® fluorochemical	ProTex® fluorochemical	ProTex® fluorochemical
optional special technologies	ProSept® antimicrobial Sentir® advanced odor blocking treatment	ProSept® antimicrobial Sentir® advanced odor blocking treatment	ProSept® antimicrobial Sentir® advanced odor blocking treatment
physical testing	flooring radiant panel – (class 1) pill test – (passes) smoke density – (less than 450 flaming) static generation – (less than 3.5 kv) ADA compliance – (compliant for accesible routes)	flooring radiant panel – (class 1) pill test – (passes) smoke density – (less than 450 flaming) static generation – (less than 3.5 kv) ADA compliance – (compliant for accesible routes)	flooring radiant panel – (class 1) pill test – (passes) smoke density – (less than 450 flaming) static generation – (less than 3.5 kv) ADA compliance – (compliant for accesible routes)
warranties	lifetime fiber performance for wear lifetime fiber performance for static lifetime stain removal lifetime colorfastness to light and atmospheric contaminants lifetime for tuft bind strength (edge ravel, yarn pulls, zippering) lifetime against delamination lifetime dimensional stability	lifetime fiber performance for wear lifetime fiber performance for static lifetime stain removal lifetime colorfastness to light and atmospheric contaminants lifetime for tuft bind strength (edge ravel, yarn pulls, zippering) lifetime against delamination lifetime dimensional stability	lifetime fiber performance for wear lifetime fiber performance for static lifetime stain removal lifetime colorfastness to light and atmospheric contaminants lifetime for tuft bind strength (edge ravel, yarn pulls, zippering) lifetime against delamination

Can be installed Glue-Free
with
TileTabs®
Nexus® Tile Connectors



installation methods



©2016 J&J Flooring Group LLC - This unique design is protected under the U.S. Copyright Act of 1976. Any unauthorized copying or duplication of this design constitutes copyright infringement in violation of federal law.

Due to the unique visual characteristics of modular carpets, pattern repeats and pattern run-off seams may appear more noticeable than in broadloom carpets. Such visual characteristics do not constitute a manufacturing defect, and as such, should be considered when selecting modular carpet and its installation.

These photographs are representations of the installation for this modular product. Your modular installation may look different than these photos depending upon individual tile placement, lighting, and overall space layout, including furnishings. Final tile placement and the resulting visual is thus the customer's, and not J+J Flooring Group's responsibility.



FLOORING GROUP

jjflooringgroup.com

P.O. Box 1287
Dalton, GA 30722
p 800 241 4586
f 706 275 4433

INVISION **kinetex**

A Division of Engineered
FLOORS