

# Atmospheric Organic Raku

# Atmospheric Organic Raku



## INSPIRATION

Clay in the potter's hands can be skillfully spun and shaped into works of ceramic art and completed in fire. But it's the finish that defines the work: dipping, pouring or brushing, iridescent glazes infuse every piece with beautiful fluidity, perfect in its imperfections.

Atmospheric represents the coalescence of elements that join in harmony to establish a striking aesthetic of textured surface and colored glaze. Inspired by the unpredictable yet beautiful results of this quick-fire method, Organic Raku yields saturated colors, eye-catching flares, and brilliant luster in tufted form.

Available in 10 fluid, earthy glazed colorways, Atmospheric is a 24"x24" tile and pairs perfectly with its 18"x36" counterpart, Organic Raku.



leover | ATMOSPHERIC // BISQUE // monolithic // ORGANIC RAKU // SILICA // monolithic  
right | ATMOSPHERIC // BISQUE // monolithic



ATMOSPHERIC // PATINA // ashlar



ATMOSPHERIC // PATINA // ashlar



ORGANIC RAKU // PEBBLE // herringbone



ORGANIC RAKU // PEBBLE // ashlar



ATMOSPHERIC // INDIGO // monolithic // ORGANIC RAKU // INK // monolithic



**COORDINATES**

Beyond the beauty of individual products, our flooring coordinates effortlessly across all of our product platforms - modular carpet tile, broadloom, LVT and Kinetex textile composite flooring. This offering enables you to blend a range of designs with tonal simplicity to create palettes that reflect the demands of each unique space.

- 1. **COLOR ZONE** // 7479 // 3225 Pepper // Modular
- 2. **FAST TRACK** // 7578 // 3217 Nitro // Modular
- 3. **CONVERGENT** // 3925 + 7925 // 3072 Unify // Broadloom + Modular
- 4. **TATAMI** // V5003 // 1019 Edo // LVT
- 5. **ORGANIC RAKU** // 7062 // 3622 Ink // Modular
- 6. **WELL VERSED II** // 7072 // 2025 Whitman // Modular
- 7. **ATMOSPHERIC** // 7713 // 3617 Indigo // Modular
- 8. **CRAFTWORK** // 6599 + 7099 // 3316 Jeweler // Broadloom + Modular
- 9. **URBAN AVENUE** // 1843 // 2836 Suburban // Kinetex
- 10. **ETCHED** // 7030 // 1993 Ingrain // Modular
- 11. **MAKE YOUR MARK** // V5012 + V5013 // 1063 Shadow // LVT
- 12. **PROVISION** // 1831 // 2280 Staple // Kinetex

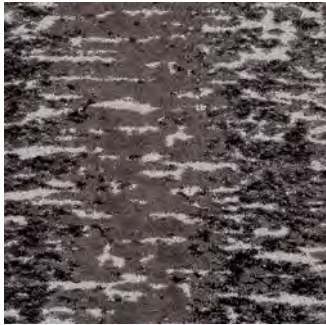


ATMOSPHERIC // ALKALINE // brick

# Atmospheric 24" x 24" MODULAR



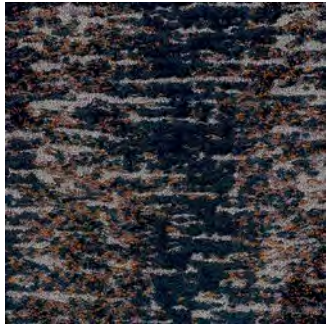
COLOR 2315  
bisque



COLOR 3613  
fired



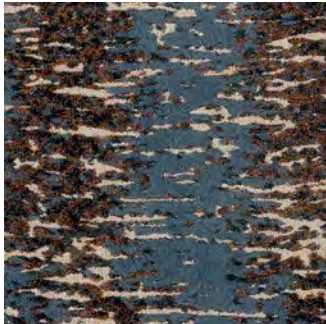
COLOR 3614  
patina



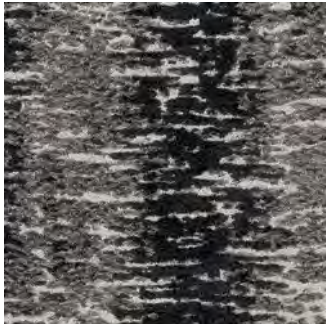
COLOR 2317  
oxide



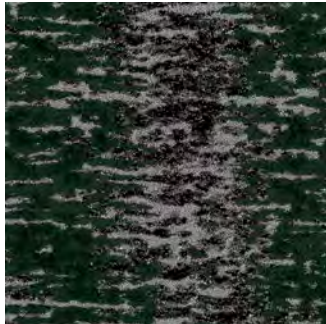
COLOR 3615  
gris



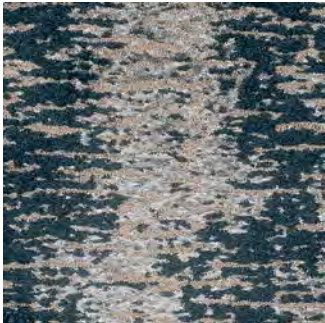
COLOR 2324  
blue kashi



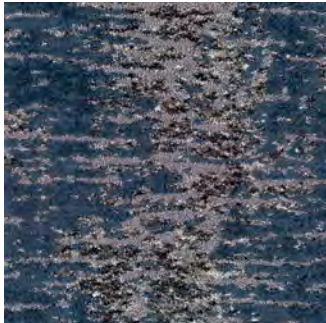
COLOR 2312  
glazed



COLOR 3616  
alpine



COLOR 2322  
alkaline



COLOR 3617  
indigo



# Organic Raku 18"x36" MODULAR



COLOR 2344  
silica



COLOR 2345  
kiln



COLOR 3618  
pebble



COLOR 2351  
burnished



COLOR 3619  
graphite



COLOR 2354  
adobe



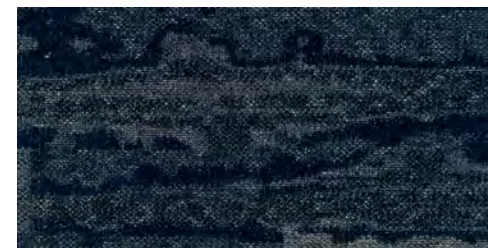
COLOR 2348  
flint



COLOR 3620  
evergreen



COLOR 3621  
cerulean



COLOR 3622  
ink

ORGANIC RAKU // CERULEAN // ashlar  
(back cover) ATMOSPHERIC // PATINA // monolithic // ORGANIC RAKU // PEBBLE // monolithic

FIBER

**Encore® SD Nylon and Encore® Nylon with ColorLoc® Plus**

Encore BCF nylon with ColorLoc Plus is manufactured to offer exceptional color, performance and appearance retention. Carpet using Encore BCF nylon with ColorLoc Plus - our patented stain resistant technology - is engineered to resist permanent staining and is backed by Lifetime Performance Warranties for stain resistance,colorfastness, color transfer, water bleed, bleach resistance and wear.

BACKINGS

**Nexus® Modular** products can be installed in a variety of ways and are performance engineered to be visually appealing. In addition, they are designed to accommodate your long-term flooring budget.

- » Manufactured in an ISO 14001 certified facility
- » Contains pre-consumer recycled content and contributes to LEED
- » Recyclable through the J+J Flooring’s R4 Carpet Reclamation Program

ADHESIVE

**Commercialon® Premium Modular Adhesive**

A high strength acrylic latex-based carpet adhesive specifically formulated for bonding modular PVC backed carpet to the floor. This premium adhesive is for use with all Nexus Modular Tile products. This adhesive is guaranteed for the lifetime of the installation when used in accordance with the J+J Flooring installation instructions. Commercialon® Premium Modular Adhesive meets the CRI Low-VOC Emission Criteria, CRI ID# PSA-425402. Commercialon® Premium Modular Adhesive is non toxic, has ultra-low odor and is antimicrobial in the dry state.

OPTIONAL:

**Commercialon® High Moisture Adhesive TileTabs - High Tack Adhesive Tabs** (modular only)

MOISTURE

Are high levels of moisture in your concrete slab causing issues with your project’s floor covering? We can help.

- » Nexus® Modular Carpet with TileTabs – 99% RH
- » Cost-efficient
- » Long-term performance
- » Straightforward, easy-to-understand warranty
- » Requires no special floor preparation

TECHNOLOGIES

**ProTex® Anti-Soil Treatment**

ProTex is a proprietary anti-soil treatment technology that is applied and bonded to the pile fiber to impede soiling and to improve cleanability. It is standard on all J+J Flooring products.

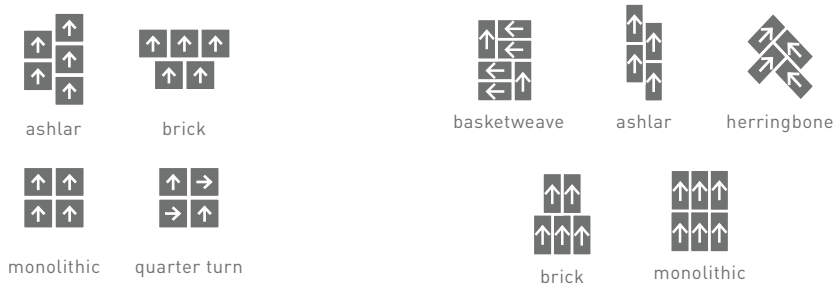
OPTIONAL:

**ProSept® Antimicrobial**

**Sentir® Advanced Odor-Blocking Technology**

STYLE	atmospheric 7713 modular	organic raku 7062 modular
CONSTRUCTION	multi-level tip sheared loop	multi-level tip sheared loop
FIBER TYPE	Encore® SD Nylon and Encore® Nylon with ColorLoc® Plus	Encore® SD Nylon and Encore® Nylon with ColorLoc® Plus
DYE METHOD	solution / yarn dyed	solution / yarn dyed
OUNCE WEIGHT	35.0 oz/sy (1186.7 grams/m2)	21.0 oz/sy (712 grams/m2)
GAUGE	1/10 (3.94 rows/cm)	1/12 (4.72 rows/cm)
BACKING	Nexus® modular	Nexus® modular
SIZE	24" x 24" (61 cm x 61 cm)	18" x 36" (45.72 cm x 91.44 cm)
PATTERN REPEAT	n/a	n/a
TOTAL THICKNESS (nominal average)	.375 inches (0.95 cm)	.281 inches (0.714 cm)
SPECIAL TECHNOLOGY	ProTex® anti-soil treatment	ProTex® anti-soil treatment
OPTIONAL SPECIAL TECHNOLOGIES	ProSept® antimicrobial Sentir® advanced odor blocking treatment	ProSept® antimicrobial Sentir® advanced odor blocking treatment
PHYSICAL TESTING	flooring radiant panel (class 1) pill test – (passes) smoke density (less than 450 flaming) static generation – (less than 3.5 kv) ADA compliance (compliant for accessible routes)	flooring radiant panel (class 1) pill test – (passes) smoke density (less than 450 flaming) static generation – (less than 3.5 kv) ADA compliance (compliant for accessible routes)
FIBER WARRANTY	lifetime fiber performance for wear lifetime fiber performance for static lifetime stain removal lifetime colorfastness to light and atmospheric contaminants	lifetime fiber performance for wear lifetime fiber performance for static lifetime stain removal lifetime colorfastness to light and atmospheric contaminants
BACKING WARRANTY	lifetime for tuft bind strength (edge ravel, yarn pulls, zippering) lifetime against delamination lifetime dimensional stability <i>Please visit <a href="http://jjflooring.com">jjflooring.com</a> for full warranty details.</i>	lifetime for tuft bind strength (edge ravel, yarn pulls, zippering) lifetime against delamination lifetime dimensional stability <i>Please visit <a href="http://jjflooring.com">jjflooring.com</a> for full warranty details.</i>

MODULAR INSTALLATION METHODS



©2023 J+J Flooring Group, LLC - This unique design is protected under the U.S. Copyright Act of 1976. Any unauthorized copying or duplication of this design constitutes copyright infringement in violation of federal law. Due to the unique visual characteristics of modular carpets, pattern repeats and pattern run-off seams may appear more noticeable than in broadloom carpets. Such visual characteristics do not constitute a manufacturing defect, and as such, should be considered when selecting modular carpet and its installation.

These photographs are representations of the installation for this modular product. Your modular installation may look different than these photos depending upon individual tile placement, lighting, and overall space layout, including furnishings. Final tile placement and the resulting visual is thus the customer’s, and not J+J Flooring’s responsibility.



P.O. BOX 2207  
DALTON, GA 30722  
P 800 241 4586  
F 706 275 4433  
JJFLOORING.COM  
OX0623M10

carpet | lvt | kinetex