

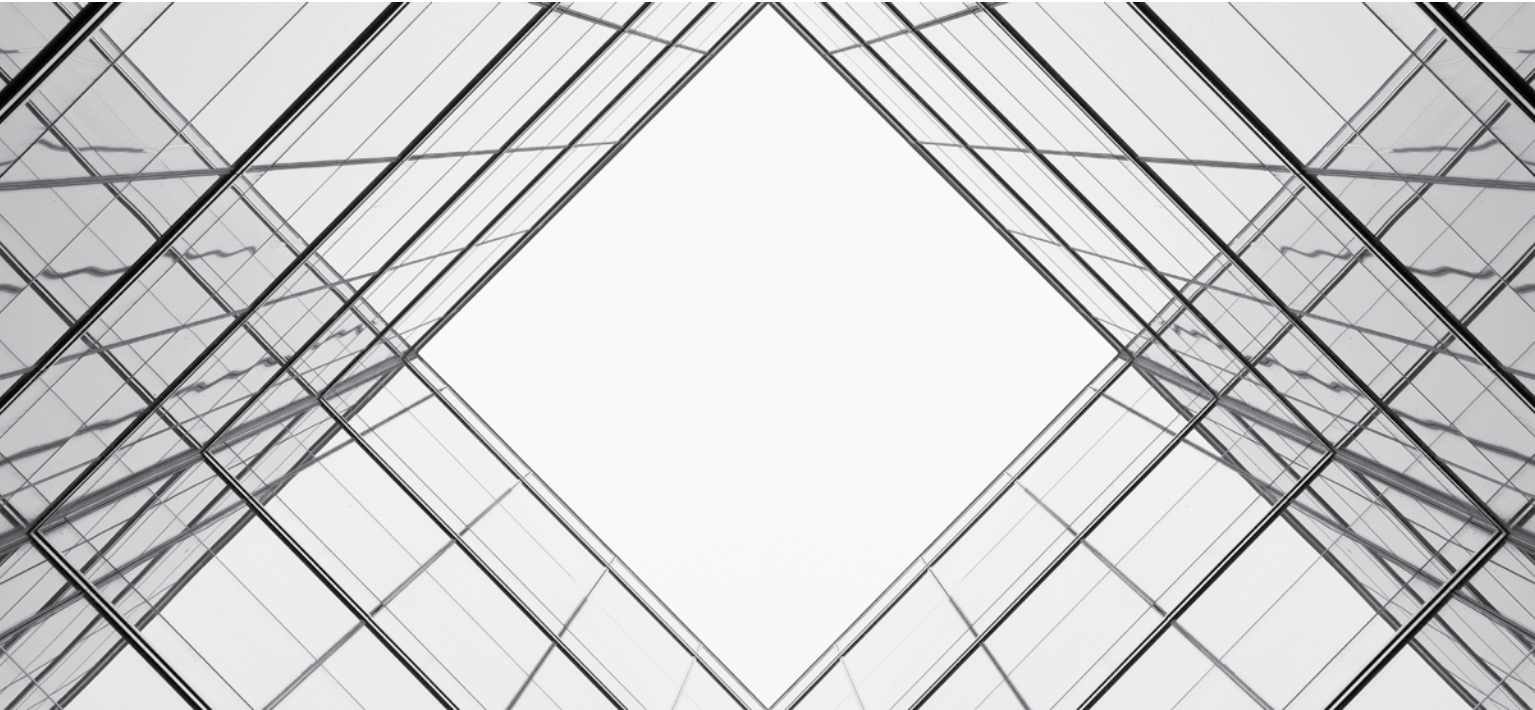
MODULAR + BROADLOOM

QUICK SHIP OPTIONS

Function Structure



Function Structure



INSPIRATION

The precision and unique elements of architectural design that determine the functionality of a structure are the inspiration for our latest collection, Structure and Function.

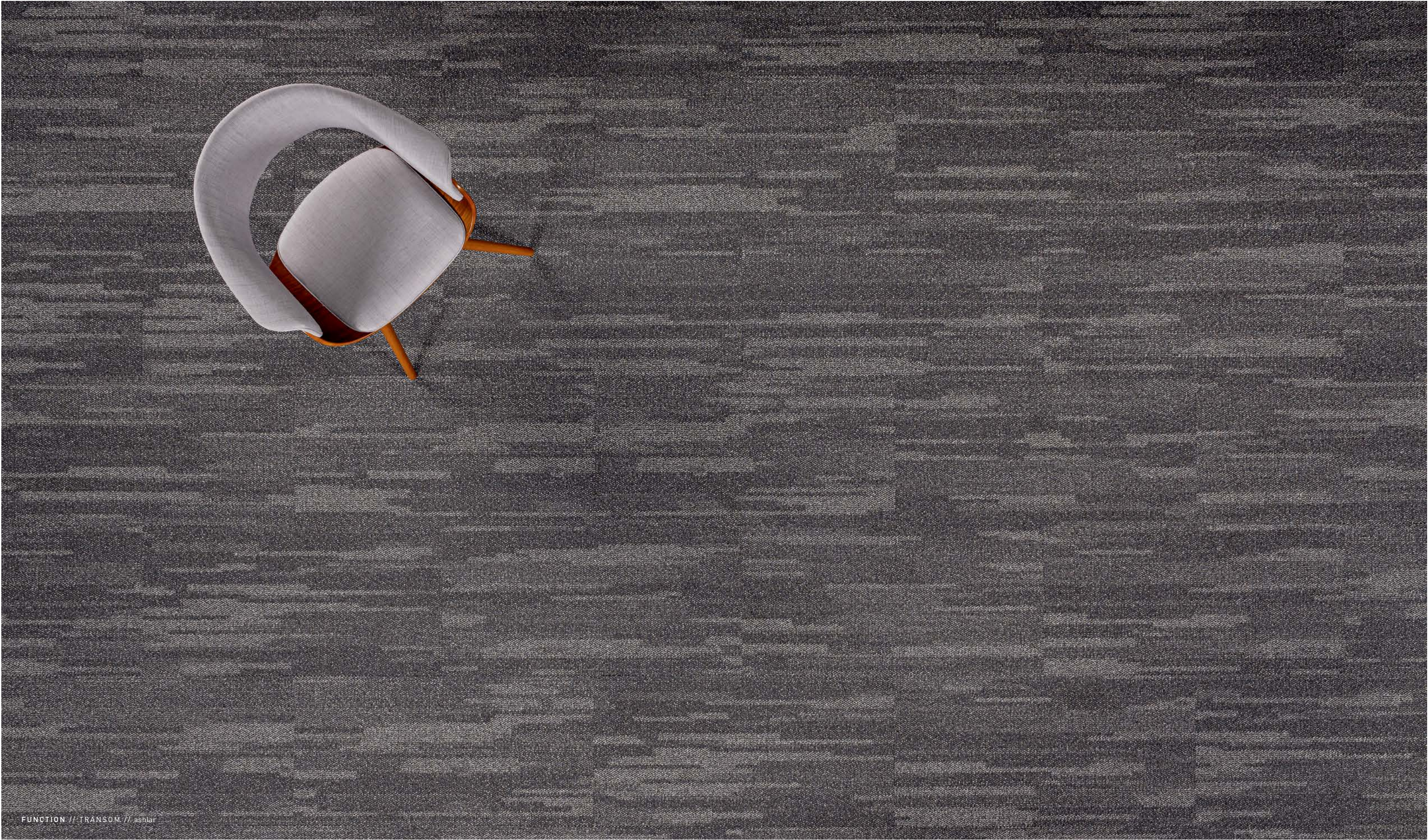
Function has a molded wash of pattern across the plain with a subtle hint of texture, suggesting movement and light. Structure has a clean form with a pristine nubby appearance – the perfect proportional complement to Function.

Function’s 18”x 36” tiles and Structure broadloom are available in 9 saturated neutral shades, and are the perfect balance of shape and color to create a canvas base that highlights the architectural surroundings in a space.



[cover] **FUNCTION** // PILASTER // ashlar // **STRUCTURE** // PILASTER // broadloom
[right] **FUNCTION** // PILASTER // ashlar

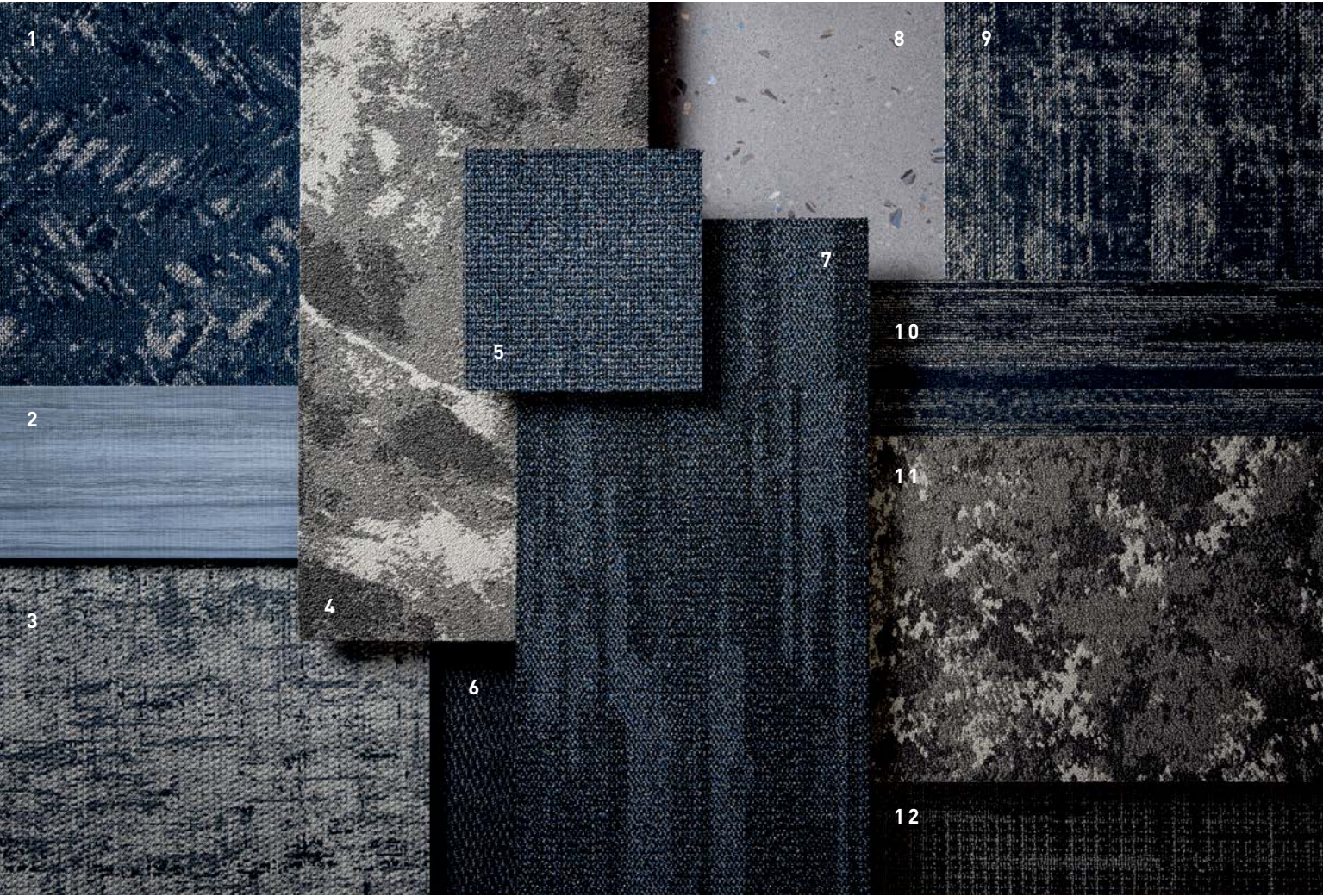




FUNCTION // TRANSOM // ashlar



FUNCTION // TRANSOM // brick



COORDINATES

Beyond the beauty of individual products, our flooring coordinates effortlessly across all of our product platforms - modular carpet tile, broadloom, LVT and Kinetex textile composite flooring. This offering enables you to blend a range of designs with tonal simplicity to create palettes that reflect the demands of each unique space.

1. TWILL WEAVE // 7586 // 2883 Corded // Modular

2. MAKE YOUR MARK // V5012+V5013 // 1068 Denim // LVT

3. DIGITAL // 1859 // 3571 Mainframe // Kinetex

4. COSMOS // 7720 // 3533 Perseus // Modular

5. STRUCTURE // 20100 // 1806 Spandrel // Broadloom

6. CATWALK II // 7268 // 1429 Photo Op // Modular Walk-Off

7. FUNCTION // 7410 // 1806 Spandrel // Modular

8. SEGMENT // V5031+V5032 // 1118 Mosaic // LVT

9. FRACTURED PLAID // 7587 // 2883 Corded // Modular

10. VARIANT // 7926 // 3072 Unify // Modular

11. GALAXY // 7719 // 3533 Perseus // Modular

12. ONE GOOD TURN // 7075 // 3331 Turn it Up // Modular

FUNCTION // SPANDREL // monolithic // STRUCTURE // SPANDREL // broadloom
[back cover] FUNCTION // PORTICO // ashlar

Function

18"x36" MODULAR



COLOR 1800
camber



QUICK SHIP
COLOR 3397
bracket



QUICK SHIP
COLOR 1802
gambrel



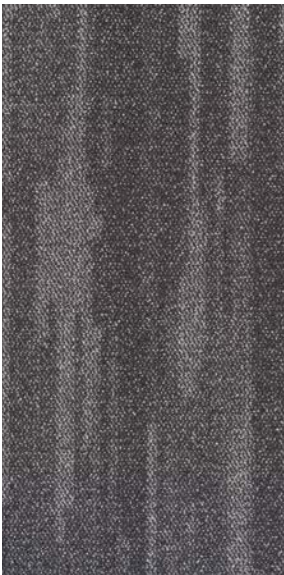
QUICK SHIP
COLOR 1801
pilaster



QUICK SHIP
COLOR 1804
truss



COLOR 3398
portico



QUICK SHIP
COLOR 3399
transom



COLOR 1805
joist



COLOR 1806
spandrel

Structure

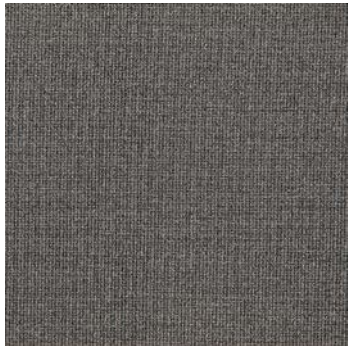
BROADLOOM



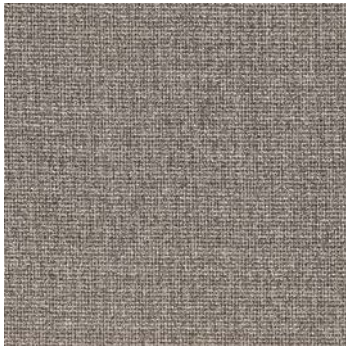
COLOR 1800
camber



QUICK SHIP
COLOR 3397
bracket



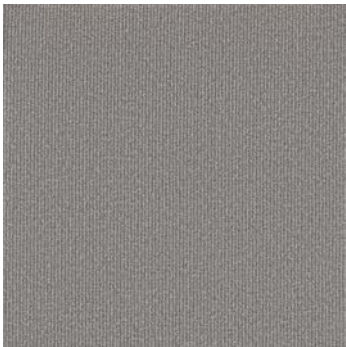
QUICK SHIP
COLOR 1802
gambrel



QUICK SHIP
COLOR 1801
pilaster



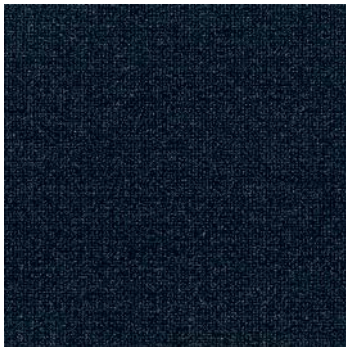
QUICK SHIP
COLOR 1804
truss



COLOR 3398
portico



QUICK SHIP
COLOR 3399
transom



COLOR 1805
joist



COLOR 1806
spandrel

FIBER

Encore® SD Ultima® Nylon (with recycled content) is specifically engineered to maximize appearance retention with exceptional color, performance, sustainability, and practicality.

BACKINGS

Nexus® Modular products can be installed in a variety of ways and are performance engineered to be visually appealing. In addition, they are designed to accommodate your long-term flooring budget.

- » Manufactured in an ISO 14001 certified facility
- » Contains pre-consumer recycled content and contributes to LEED
- » Recyclable through the J+J Flooring’s R4 Carpet Reclamation Program

PremierBac® Plus is standard on broadloom products and provides superior construction to ensure solid dimensional stability for broadloom carpets.

- » Stretch-in or glue-down installation
- » Manufactured in an ISO 14001 certified facility
- » Contains pre-consumer recycled content and contributes to LEED
- » Recyclable through the J+J Flooring R4 Carpet Reclamation Program

ADHESIVE

Commercialon® Premium Carpet Adhesive is formulated for the most demanding interior carpet installations. It forms a powerful bond with stiff and heavy backed commercial carpets directly over approved substrates. It is quick setting, features antimicrobial protection and can be removed easily. This solvent free adhesive is also low in odor, meeting the low VOC emission criteria of the CRI Green Label Plus Indoor Air Quality. Commercialon Premium Adhesive is for use with broadloom PremierBac Plus, TitanBac® Plus and Endure Plus backings systems.

Commercialon® Premium Modular Adhesive
A high strength acrylic latex-based carpet adhesive specifically formulated for bonding modular PVC backed carpet to the floor. This premium adhesive is for use with all Nexus Modular Tile products. This adhesive is guaranteed for the life of the installation when used in accordance with the J+J Flooring Carpet Installation Handbook. Commercialon Premium Modular Adhesive meets the CRI Low-VOC Emission Criteria, CRI ID# PSA-425402. Commercialon Premium Modular Adhesive is non toxic, has ultra-low odor and is antimicrobial in the dry state.

OPTIONAL:
TileTabs - High Tack Adhesive Tabs (modular only)

Commercialon® High Moisture Adhesive

MOISTURE

Are high levels of moisture in your concrete slab causing issues with your project’s floor covering? We can help.

- » Nexus® Modular Carpet with TileTabs – 99% RH
- » Cost-efficient
- » Long-term performance
- » Straightforward, easy-to-understand warranty
- » Requires no special floor preparation

TECHNOLOGIES

ProTex® Anti-Soil Treatment
ProTex is a proprietary anti-soil treatment technology that is applied and bonded to the pile fiber to impede soiling and to improve cleanability. It is standard on all J+J Flooring products.

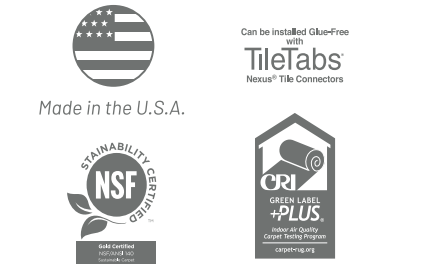
OPTIONAL:
ProSept® Antimicrobial
Sentir® Advanced Odor-Blocking Technology

STYLE	Function 7410 modular	Structure 20100 broadloom
CONSTRUCTION	Patterned Loop	Textured Loop
FIBER TYPE	100% Encore® SD Ultima® Nylon	100% Encore® SD Ultima® Nylon
DYE METHOD	solution dyed	solution dyed
OUNCE WEIGHT	18 oz./sy (610 grams/m2)	20 oz./sy (678 grams/m2)
GAUGE	1/12 (4.72 rows/cm)	1/10 (3.94 rows/cm)
BACKING	Nexus® modular	PremierBac® Plus
SIZE	18” x 36” (45.72 cm x 91.44 cm)	12 ft. (3.66 m)
PATTERN REPEAT	N/A	0.25”W x 0.25”L (0.64cm x 0.64cm)
TOTAL THICKNESS (nominal average)	0.172 inches (0.437 cm)	0.218 inches (0.554 cm)
SPECIAL TECHNOLOGY	ProTex® anti-soil treatment	ProTex® anti-soil treatment
OPTIONAL SPECIAL TECHNOLOGIES	ProSept® Antimicrobial Sentir® Advanced Odor-Blocking Technology	ProSept® Antimicrobial Sentir® Advanced Odor-Blocking Technology
PHYSICAL TESTING	flooring radiant panel (class 1) pill test – (passes) smoke density (less than 450 flaming) static generation -(less than 3.5 kv) ADA compliance (compliant for accessible routes)	flooring radiant panel (class 1) pill test – (passes) smoke density (less than 450 flaming) static generation -(less than 3.0 kv) ADA compliance (compliant for accessible routes)
FIBER WARRANTY	lifetime fiber performance for wear lifetime fiber performance for static lifetime stain removal lifetime colorfastness to light and atmospheric contaminants	lifetime fiber performance for wear lifetime fiber performance for static lifetime stain removal lifetime colorfastness to light and atmospheric contaminants
BACKING WARRANTY	lifetime for tuft bind strength (edge ravel, yarn pulls, zippering) lifetime against delamination lifetime dimensional stability	10 year for tuft bind strength (edge ravel, yarn pulls, zippering) 10 year against delamination

MODULAR INSTALLATION METHODS



STRAIGHT-FORWARD WARRANTIES					
Warranty: Installed with TileTabs	Warranty: Installed with Commercialon® Premium Adhesive and Commercialon® High Moisture Adhesive (non-prorated)	Warranty: Installed with any other adhesive	Max RH, pH: Installed without Commercialon® Premium Sealer	Max RH, pH: Installed with Commercialon® Premium Sealer	Max RH, pH: Installed with Commercialon® High Moisture Adhesive
Lifetime	Lifetime	1 Year	90% RH, pH 9	99% RH, pH 11 (TileTabs) 97% RH, pH 11 (Commercialon® Adhesive)	99% RH, pH12



©2023 J+J Flooring Group, LLC - This unique design is protected under the U.S. Copyright Act of 1976. Any unauthorized copying or duplication of this design constitutes copyright infringement in violation of federal law. Due to the unique visual characteristics of modular carpets, pattern repeats and pattern run-off seams may appear more noticeable than in broadloom carpets. Such visual characteristics do not constitute a manufacturing defect, and as such, should be considered when selecting modular carpet and its installation.

These photographs are representations of the installation for this modular product. Your modular installation may look different than these photos depending upon individual tile placement, lighting, and overall space layout, including furnishings. Final tile placement and the resulting visual is thus the customer’s, and not J+J Flooring’s responsibility.



P.O. BOX 2207
DALTON, GA 30722
P 800 241 4586
F 706 275 4433
JJFLOORING.COM
NX0823M11

carpet | lvt | kinetex



FLOORING
A DIVISION OF ENGINEERED FLOORS