

IDYLLWILD COLLECTION

Sojourn Bliss Harmony



IDYLLWILD COLLECTION

Sojourn Bliss Harmony



INSPIRATION

The Idyllwild Collection is an ode to the refreshing and invigorating spirit of Idyllwild, California. Each design captures the essence of Idyllwild's tranquil landscapes, from a canopy of evergreen trees to vibrant, abstracted flora.

Inspired by the ever-changing landscapes of Idyllwild's creek side ecosystems, **Sojourn** shows off the dynamic beauty of nature with this large scale design. This pattern ebbs and flows in a space creating a balanced, soothing aesthetic. **Harmony** is inspired by the diverse flora and fauna. The abstracted design transforms the essence of wildflowers into a captivating visual symphony. **Bliss** is the perfect, go anywhere product. Reminiscent of the beautiful evergreen canopy of Idyllwild, the pattern echoes the verdant foliage found in the wilderness. This collection is offered in multiple platforms. Styles Sojourn, Bliss and Harmony come in an 18" x 36" tile. Bliss and Harmony are also available as broadloom.



[cover] HARMONY // SANDSTONE // ashlar // BLISS // SANDSTONE // broadloom
[right] SOJOURN // SANDSTONE // ashlar



SOJOURN // BLUE SPRUCE // brick



SOJOURN // BLUE SPRUCE // brick



BLISS // BLUE SPRUCE // erick



BLISS // BLUE SPRUCE // broadloom



HARMONY // BLUE SPRUCE // brick



HARMONY// BLUE SPRUCE // broadloom



COORDINATES

Beyond the beauty of individual products, our flooring coordinates effortlessly across all of our product platforms - modular carpet tile, broadloom, LVT and Kinetex textile composite flooring. This offering enables you to blend a range of designs with tonal simplicity to create palettes that reflect the demands of each unique space.

- 1. **METAMORPHIC** // 7717 // 2960 Feldspar // modular
- 2. **LEGEND** // V5009 + V5010 // 1059 Fiction // LVT
- 3. **SOJOURN** // 7504 // 3645 Sandstone // modular
- 4. **VALLEY** // 7501 + 6501 // 3478 Basin // modular + broadloom
- 5. **ZEPHYR** // 7478 // 3362 Westerlies // modular
- 6. **AGAINST THE GRAIN** // 1840 // 2821 Bran // kinetex
- 7. **HARMONY** // 7506 + 6506 // 3645 Sandstone // modular + broadloom
- 8. **BLISS** // 7505 + 6505 // 3645 Sandstone // modular + broadloom
- 9. **QUILL** // 7801 // 3628 Truffle // modular
- 10. **TIMELESS** // V5011 // 1061 Gift // LVT
- 11. **VALLEY** // 7501 + 6501 // 3476 Desert // modular + broadloom



COORDINATES

Beyond the beauty of individual products, our flooring coordinates effortlessly across all of our product platforms - modular carpet tile, broadloom, LVT and Kinetex textile composite flooring. This offering enables you to blend a range of designs with tonal simplicity to create palettes that reflect the demands of each unique space.

- 1. SERENE // 7592 + 6592 // 3235 Meadowlark // modular + broadloom
- 2. BOUCLÉ II // 7081 + 3081 // 2706 Strand // modular + broadloom
- 3. PROVISION // 1831 // 2277 Procurement // kinetex
- 4. BLISS // 7505 + 6505 // 3641 Juniper // modular + broadloom
- 5. SOJOURN // 7504 // 3641 Juniper // modular
- 6. REED // 7800 // 3625 Lichen // modular
- 7. CRAFTWORK // 7099 + 6599 // 2200 Potter // modular + broadloom
- 8. HARMONY // 7506 + 6506 // 3641 Juniper // modular + broadloom
- 9. FRAMEWORK // V5001 // 1015 Beam // LVT
- 10. METAMORPHIC // 7717 // 2960 Feldspar // modular
- 11. TRANQUIL // 7593 + 6593 // 3235 Meadowlark // modular + broadloom



[above] BLISS // JUNIPER // ashlar // HARMONY // JUNIPER // parquet
[back cover] SOJOURN // JUNIPER // ashlar

BLISS COLORWAYS | 18"x36" MODULAR + BROADLOOM



BLISS
COLOR 3641
juniper

BLISS
COLOR 3642
hazelwood

BLISS
COLOR 3643
alpenglow

BLISS
COLOR 3644
hearth

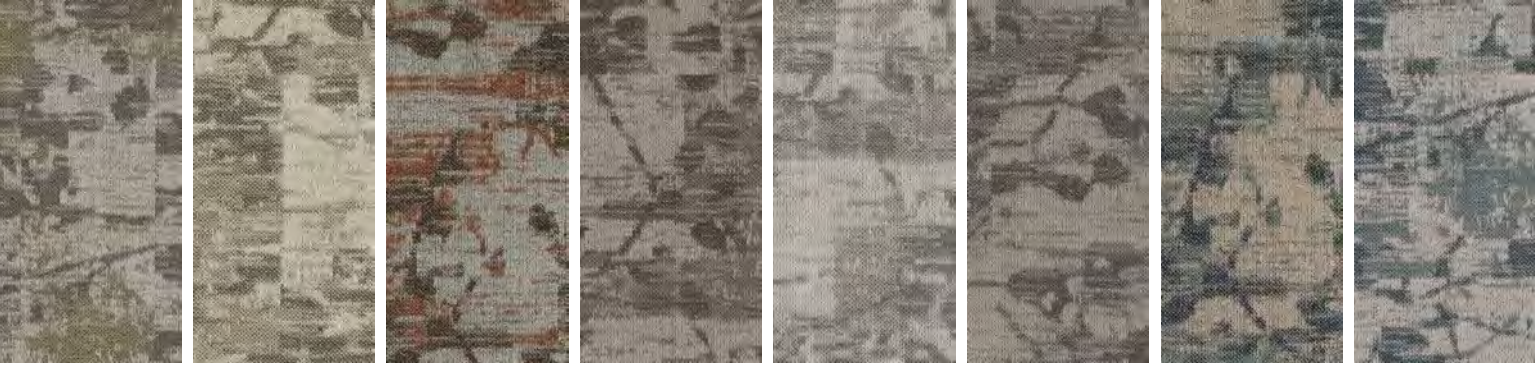
BLISS
COLOR 3645
sandstone

BLISS
COLOR 3646
crisp air

BLISS
COLOR 3647
blue spruce

BLISS
COLOR 3648
wild indigo

HARMONY COLORWAYS | 18"x36" MODULAR + BROADLOOM



HARMONY
COLOR 3641
juniper

HARMONY
COLOR 3642
hazelwood

HARMONY
COLOR 3643
alpenglow

HARMONY
COLOR 3644
hearth

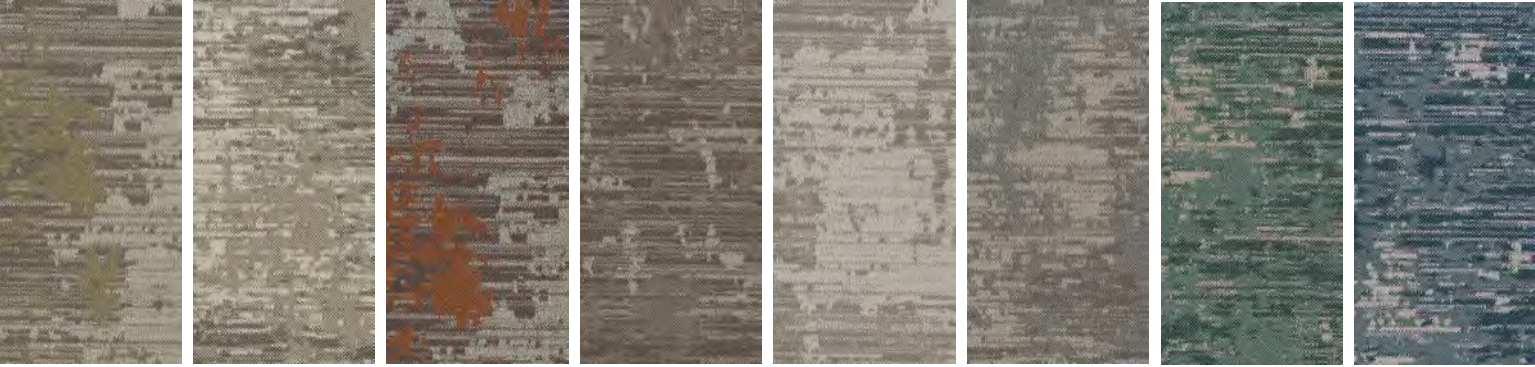
HARMONY
COLOR 3645
sandstone

HARMONY
COLOR 3646
crisp air

HARMONY
COLOR 3647
blue spruce

HARMONY
COLOR 3648
wild indigo

SOJOURN COLORWAYS | 18"x36" MODULAR



SOJOURN
COLOR 3641
juniper

SOJOURN
COLOR 3642
hazelwood

SOJOURN
COLOR 3643
alpenglow

SOJOURN
COLOR 3644
hearth

SOJOURN
COLOR 3645
sandstone

SOJOURN
COLOR 3646
crisp air

SOJOURN
COLOR 3647
blue spruce

SOJOURN
COLOR 3648
wild indigo



FIBER

Encore® SD Ultima® Nylon (with recycled content) is specifically engineered to maximize appearance retention with exceptional color, performance, sustainability and practicality.

FIBER OPTION:

Encore® 100
The high recycled content incorporated into Encore 100 nylon provides a reduced environmental impact without compromising quality or color clarity.

- » 100% post-industrial (pre-consumer) recycled content
- » Full inclusion into the J&J Flooring Carpet Reclamation Program
- » Lifetime warranty for stain removal, colorfastness, wear and static
- » See sales rep for for availability and price

MOISTURE

Are high levels of moisture in your concrete slab causing issues with your project’s floor covering? We can help.

- » Nexus® Modular Carpet with TileTabs – 99% RH
- » Cost-efficient
- » Long-term performance
- » Straightforward, easy-to-understand warranty
- » Requires no special floor preparation

TECHNOLOGIES

ProTex® Anti-Soil Treatment is a proprietary anti-soil treatment technology that is applied and bonded to the pile fiber to impede soiling and to improve cleanability. It is standard on all J+J Flooring products.

OPTIONAL:
ProSept® Antimicrobial

BACKINGS

PremierBac® Plus is standard on broadloom products and provides superior construction to ensure solid dimensional stability for broadloom carpets.

OPTIONAL:
Endure® Plus
TitanBac® Plus

Nexus® Modular products can be installed in a variety of ways and are performance engineered to be visually appealing. In addition, they are designed to accommodate your long-term flooring budget.

- » Manufactured in an ISO 14001 certified facility
- » Contains pre-consumer recycled content and contributes to LEED
- » Recyclable through the J+J Flooring’s R4 Carpet Reclamation Program

OPTIONAL:
Nexus®Cushion
Nexus® FC Cushion

ADHESIVE

Commercialon® Premium Carpet Adhesive
A premium carpet floor adhesive approved for all carpets and backing systems (except vinyl backed carpets). This adhesive is guaranteed for the life of the installation when used in accordance with the J+J Flooring Carpet Installation Handbook. Commercialon Premium Adhesive meets the CRI Low-VOC Emission Criteria, CRI ID# PSA-425402. Commercialon Premium Adhesive is non toxic, has ultra- low odor and is antimicrobial in the dry state.

Commercialon® Premium Modular Adhesive
A high strength acrylic latex-based carpet adhesive specifically formulated for bonding modular PVC backed carpet to the floor. This premium adhesive is for use with all Nexus Modular Tile products. This adhesive is guaranteed for the lifetime of the installation when used in accordance with the J+J Flooring installation instructions. Commercialon® Premium Modular Adhesive meets the CRI Low-VOC Emission Criteria, CRI ID# PSA-425402. Commercialon® Premium Modular Adhesive is non toxic, has ultra-low odor and is antimicrobial in the dry state.

OPTIONAL:
Commercialon® High Moisture Adhesive
TileTabs - High Tack Adhesive Tabs (modular only)

STYLE	Sojourn 7504 modular	Bliss 7505 modular	Bliss 6505 broadloom	Harmony 7506 modular	Harmony 6506 broadloom
CONSTRUCTION	patterned loop	patterned loop	patterned loop	patterned loop	patterned loop
FIBER TYPE	100% Encore® SD Ultima® Nylon	100% Encore® SD Ultima® Nylon	100% Encore® SD Ultima® Nylon	100% Encore® SD Ultima® Nylon	100% Encore® SD Ultima® Nylon
FIBER OPTION	Encore® 100	Encore® 100	Encore® 100	Encore® 100	Encore® 100
DYE METHOD	solution dyed	solution dyed	solution dyed	solution dyed	solution dyed
OUNCE WEIGHT	22 oz./sy (746 grams/m²)	22 oz./sy (746 grams/m²)	22 oz./sy (746 grams/m²)	22 oz./sy (746 grams/m²)	22 oz./sy (746 grams/m²)
GAUGE	1/12 {4.72 rows/cm}	1/12 {4.72 rows/cm}	1/12 {4.72 rows/cm}	1/12 {4.72 rows/cm}	1/12 {4.72 rows/cm}
BACKING	Nexus® modular	Nexus® modular	PremierBac® Plus	Nexus® modular	PremierBac® Plus
SIZE	18” x 36” (45.72 cm x 91.44 cm)	18” x 36” (45.72 cm x 91.44 cm)	12 feet (3.66 cm)	18” x 36” (45.72 cm x 91.44 cm)	12 feet (3.66 cm)
PATTERN REPEAT	n/a	n/a	48”W x 48” L (122 cm x 122 cm)	n/a	72”Wx72”L (182 cmx182 cm)
TOTAL THICKNESS (nominal average)	0.25 inches (0.635 cm)	0.218 inches (0.554 cm)	0.187 inches (0.475 cm)	0.250 inches (0.635 cm)	0.187 inches (0.475 cm)
SPECIAL TECHNOLOGY	ProTex® anti-soil treatment	ProTex® anti-soil treatment	ProTex® anti-soil treatment	ProTex® anti-soil treatment	ProTex® anti-soil treatment
OPTIONAL SPECIAL TECHNOLOGIES	ProSept® antimicrobial	ProSept® antimicrobial	ProSept® antimicrobial	ProSept® antimicrobial	ProSept® antimicrobial
PHYSICAL TESTING	flooring radiant panel (class 1)	flooring radiant panel (class 1)	flooring radiant panel (class 1)	flooring radiant panel (class 1)	flooring radiant panel (class 1)
	pill test – (passes)	pill test – (passes)	pill test – (passes)	pill test – (passes)	pill test – (passes)
	smoke density (less than 450 flaming)	smoke density (less than 450 flaming)	smoke density (less than 450 flaming)	smoke density (less than 450 flaming)	smoke density (less than 450 flaming)
	static generation – (less than 3.5 kv)	static generation – (less than 3.5 kv)	static generation – (less than 3.5 kv)	static generation – (less than 3.5 kv)	static generation – (less than 3.5 kv)
	ADA compliance (compliant for accessible routes)	ADA compliance (compliant for accessible routes)	ADA compliance (compliant for accessible routes)	ADA compliance (compliant for accessible routes)	ADA compliance (compliant for accessible routes)
FIBER WARRANTY	lifetime fiber performance for wear	lifetime fiber performance for wear	lifetime fiber performance for wear	lifetime fiber performance for wear	lifetime fiber performance for wear
	lifetime fiber performance for static	lifetime fiber performance for static	lifetime fiber performance for static	lifetime fiber performance for static	lifetime fiber performance for static
	lifetime stain removal	lifetime stain removal	lifetime stain removal	lifetime stain removal	lifetime stain removal
	lifetime colorfastness to light and atmospheric contaminants	lifetime colorfastness to light and atmospheric contaminants	lifetime colorfastness to light and atmospheric contaminants	lifetime colorfastness to light and atmospheric contaminants	lifetime colorfastness to light and atmospheric contaminants
BACKING WARRANTY	lifetime for tuft bind strength (edge ravel, yarn pulls, zippering)	lifetime for tuft bind strength (edge ravel, yarn pulls, zippering)	10 year tuft bind strength (edge ravel, yarn pulls, zippering)	lifetime for tuft bind strength (edge ravel, yarn pulls, zippering)	10 year tuft bind strength (edge ravel, yarn pulls, zippering)
	lifetime against delamination	lifetime against delamination	10 year against delamination	lifetime against delamination	10 year against delamination
	lifetime dimensional stability	lifetime dimensional stability		lifetime dimensional stability	

MODULAR INSTALLATION METHODS



parquet



basketweave



ashlar



herringbone



brick

©2024 J+J Flooring Group, LLC - This unique design is protected under the U.S. Copyright Act of 1976. Any unauthorized copying or duplication of this design constitutes copyright infringement in violation of federal law. Due to the unique visual characteristics of modular carpets, pattern repeats and pattern run-off seams may appear more noticeable than in broadloom carpets. Such visual characteristics do not constitute a manufacturing defect, and as such, should be considered when selecting modular carpet and its installation.

These photographs are representations of the installation for this modular product. Your modular installation may look different than these photos depending upon individual tile placement, lighting, and overall space layout, including furnishings. Final tile placement and the resulting visual is thus the customer’s, and not J+J Flooring’s responsibility.



P.O. BOX 2207

DALTON, GA 30722

P 800 241 4586

F 706 275 4433

JJFLOORING.COM

JX2924M06

carpet | lvt | kinetex



FLOORING
A DIVISION OF ENGINEERED FLOORS