

QUICK SHIP  
**INTRINSIC**





**J+J FLOORING GROUP**

---

From our establishment in 1957, we have become one of the oldest exclusive manufacturers of *commercial flooring* in the United States. As one of the largest privately held mills, our FAMILY-OWNERSHIP provides a *heritage* of proven performance and expansive industry knowledge. Most importantly, our focus has always been on *people...* ensuring them that our products deliver the highest levels of BEAUTY, PERFORMANCE and DEPENDABILITY.

---

carpet | lvt | **kinetex**

(cover) Intrinsic *Key*, brick.  
(right) Intrinsic *Innate*, ashlar.







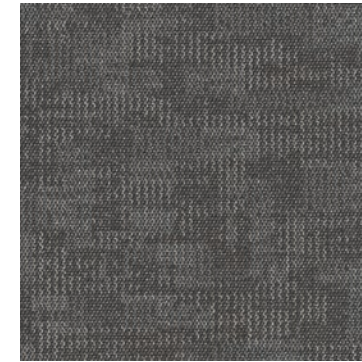




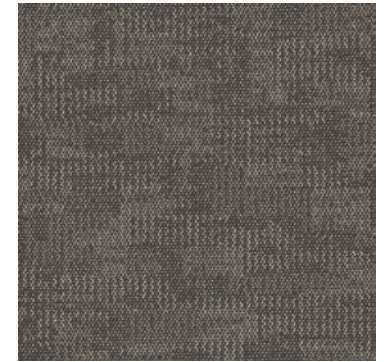
QUICK SHIP  
intrinsic 7096



style 7096  
**color 2717**  
authentic



style 7096  
**color 2718**  
central



style 7096  
**color 2719**  
essential



style 7096  
**color 2720**  
fundamental



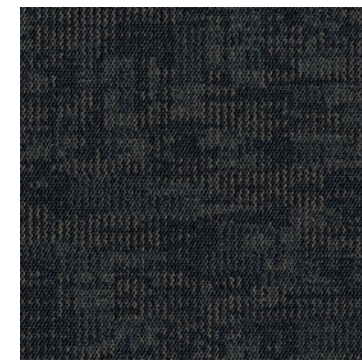
style 7096  
**color 2722**  
innate



style 7096  
**color 2723**  
key



style 7096  
**color 2726**  
inherent



style 7096  
**color 2728**  
true



style 7096  
**color 2729**  
vital

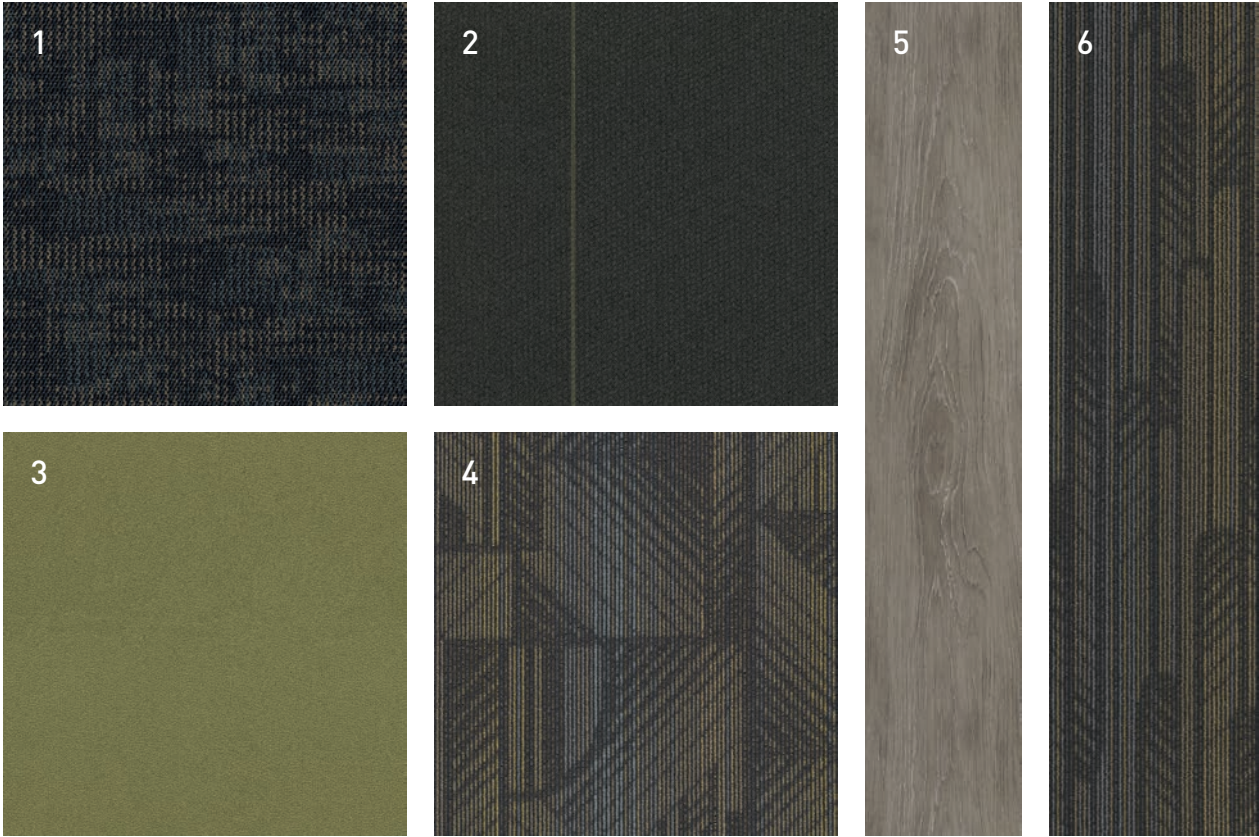
All colors of Intrinsic are available as Quick Ship. J+J Flooring Group's Quick Ship program ensures that some of our most popular styles and colors will ship within 10 days for orders up to 1,500 square yards (13,500 sq. ft.).

You need it quick — we're on it.





coordinating palette



Beyond the beauty of individual products, our flooring coordinates effortlessly with each other. This offering enables you to blend a range of designs with tonal simplicity to create palettes that reflect the demands of each unique space.

1	Intrinsic	7096	#2728 True	Modular
2	Flash	1818	#1722 Esmeralda	Kinetex
3	Chroma	7031	#1971 Crisp	Modular
4	Generation	7067	#2665 Ambition	Modular
5	Framework	V5001	#1015 Beam	LVT
6	Inline	7068	#2665 Ambition	Modular

(left) *Intrinsic Central*, monolithic with a *Framework Partition* border.



product details

FIBER

**Encore® SD Ultima®** (with recycled content)  
Encore SD Ultima is specifically engineered to maximize appearance retention with exceptional color, performance, sustainability and practicality.

BACKINGS

Nexus® Modular

Nexus modular products can be installed in a variety of ways and are performance engineered to be visually appealing. In addition, they are designed to accommodate your long-term flooring budget.

- Manufactured in an ISO 14001 certified facility
- Contains pre-consumer recycled content and contributes to LEED
- Recyclable through the J+J Flooring Group's R4 Carpet Reclamation Program

MOISTURE

Are high levels of moisture in your concrete slab causing issues with your project's floor covering? We can help.

- Nexus® Modular Carpet with TileTabs – 99% RH
- Cost-efficient
- Long-term performance
- Straightforward, easy-to-understand Lifetime warranty
- Requires no special floor preparation

Adhesive

**Commercialon®** Premium Modular Adhesive  
A high strength acrylic latex-based carpet adhesive specifically formulated for bonding modular PVC backed carpet to the floor. This premium adhesive is for use with all Nexus Modular Tile products. This adhesive is guaranteed for the life of the installation when used in accordance with the J+J Flooring Group Carpet Installation Handbook. Commercialon Premium Modular Adhesive meets the CRI Low-VOC Emission Criteria, CRI ID# PSA-425402. Commercialon Premium Modular Adhesive is non toxic, has ultra-low odor and is antimicrobial in the dry state.

OPTIONAL:

**TileTabs – High Tack Adhesive Tabs** (modular only)

TECHNOLOGIES

ProTex® Anti-Soil Treatment

ProTex is a proprietary anti-soil treatment technology that is applied and bonded to the pile fiber to impede soiling and to improve cleanability. It is standard on all J+J Flooring Group products.

OPTIONAL:

**ProSept®** Antimicrobial

**Sentir®** Advanced Odor-Blocking Technology



Green Circle - Zero Waste to Landfill Operations Certification

We are proudly certified as a Zero Waste to Landfill manufacturer by GreenCircle Certified, LLC., a prominent third-party certifier of environmental claims. We are the first commercial flooring manufacturer in the United States to achieve this landfill free status and the first company in the industry to have its waste diversion efforts audited and verified by a recognized, third-party certifier.

To learn more about zero waste or our other initiatives see our sustainability progress report online at [jjflooring.com/sustainability](http://jjflooring.com/sustainability)



We're on it.  
The J+J Flooring Group Premium Customer Experience.

Our Premium Customer Experience is a carefully crafted process by which we guarantee that our customers will get the products, services and the reliability they expect from us.

To learn more visit:  
[jjflooring.com/customer-experience/](http://jjflooring.com/customer-experience/)

Warranty: Installed with TileTabs	Warranty: Installed with Commercialon® Premium Adhesive (non-prorated)	Warranty: Installed with any other Adhesive	Max RH, pH: Installed without Sealer	Max RH, pH: Installed with Commercialon® Premium Adhesive
lifetime	lifetime	1 year	90% RH, pH 9	99% RH, pH 11 (Tiletabs) -- 97% RH, pH 11 (Commercialon)



style	intrinsic 7096 modular
construction	patterned loop
fiber type	100% Encore® SD Ultima® nylon with recycled content
dye method	100% solution dyed
ounce weight	15.0 oz/sy (509 grams/m²)
gauge	1/12 (4.72 rows/cm)
backing	Nexus® modular
size	24" x 24" (61.0 cm x 61.0 cm)
pattern repeat	n/a
total thickness (nominal average)	.25 inches (0.635 cm)
special technology	ProTex® anti-soil treatment
optional special technologies	ProSept® antimicrobial Sentir® advanced odor blocking treatment
physical testing	flooring radiant panel (class 1) pill test – (passes) smoke density (less than 450 flaming) static generation -(less than 3.5 kv) ADA compliance (compliant for accessible routes)
warranties	lifetime fiber performance for wear lifetime fiber performance for static lifetime stain removal lifetime colorfastness to light and atmospheric contaminants lifetime for tuft bind strength (edge ravel, yarn pulls, zippering) lifetime against delamination lifetime dimensional stability

modular installation methods



