

# Jack

MODULAR

QUICK SHIP OPTIONS



FLOORING



# Jack



## INSPIRATION

Jack, our latest flooring introduction, takes its cue from the flawless detail found in classic menswear. Jack features the cut and feel of a pinstripe with a hint of a hounds tooth. Each color has a fine denier silver yarn that adds a subtle sparkle and a black yarn that creates a salt and pepper texture. Available as a 12x48 tile in twelve fashion-forward colors.



(cover) JACK // SUIT // ashlar  
(right) JACK // TIE // brick









JACK // GARMENT // herringbone





### COORDINATES

Beyond the beauty of individual products, our flooring coordinates effortlessly across all of our product platforms - modular carpet tile, broadloom, LVT and Kinetex textile composite flooring. This offering enables you to blend a range of designs with tonal simplicity to create palettes that reflect the demands of each unique space.

- 1. **ATMOSPHERIC** // 7713 // 2315 Bisque // Modular
- 2. **JACK** // 7914 // 3419 Vest // Modular
- 3. **STRIA** // 7585 // 2742 Pima // Modular
- 4. **ELEMENTAL** // 7683 // 2635 Raw // Modular
- 5. **POWER PLAY** // V5019+V5020 // 1083 Information // LVT
- 6. **PROVISION** // 1831 // 2276 Fare // Kinetex
- 7. **ORGANIC RAKU** // 7062 // 2344 Silica // Modular
- 8. **MILKY WAY** // 7956 // 2007 Salt Creek // Modular
- 9. **OVERTURE** // N9133 // 3325 Aria // Broadloom
- 10. **LEGEND** // V5009+V5010 // 1059 Fiction // LVT
- 11. **INTRINSIC** // 7096 // 2719 Essential // Modular





DAPPER // SUIT // monolithic  
JACK // SUIT // ashter



COORDINATES

Beyond the beauty of individual products, our flooring coordinates effortlessly across all of our product platforms - modular carpet tile, broadloom, LVT and Kinetex textile composite flooring. This offering enables you to blend a range of designs with tonal simplicity to create palettes that reflect the demands of each unique space.

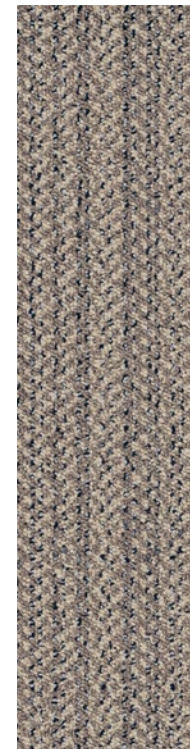
1. MESA // 7500 // 3472 Ridge // Modular
2. MAKE YOUR MARK // V5012 + V5013 // 1063 Shadow // LVT
3. BOUCLÉ // 3081 + 7081 // 2710 Tweed // Broadloom + Modular
4. STORYLINE // 7589 //3015 Analogy // Modular
5. JACK // 7914 // 3431 Suit // Modular
6. COLOR ZONE // 7479 // 3225 Pepper // Modular

7. DAPPER // 7913 // 3431 Suit // Modular
8. FRACTURED PLAID // 7587 // 2884 Plush // Modular
9. NETWORK // 1842 // 2851 Database // Kinetex
10. ADJUST // 7601 // 3268 Crystal Oasis // Modular
11. TIMELESS // V5011 // 1062 Estate // LVT
12. TWILL WEAVE // 7586 // 2884 Plush // Modular





# Jack 12"x48" MODULAR



COLOR 3419  
vest



COLOR 3420  
blazer



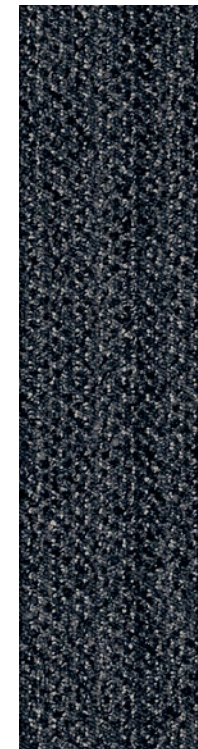
COLOR 3421  
lapel



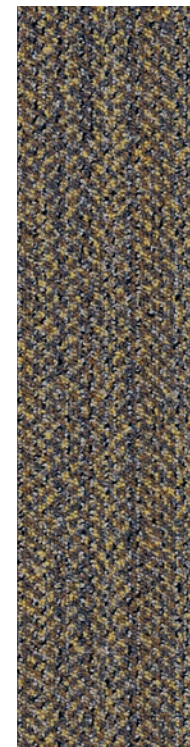
**QUICK SHIP**  
COLOR 3422  
tie



**QUICK SHIP**  
COLOR 3423  
hem



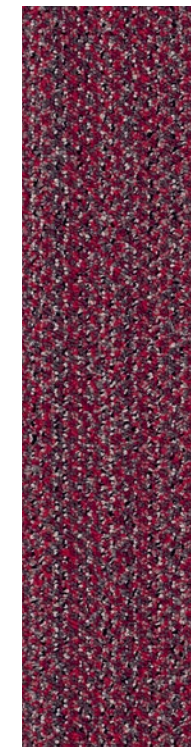
COLOR 3424  
facing



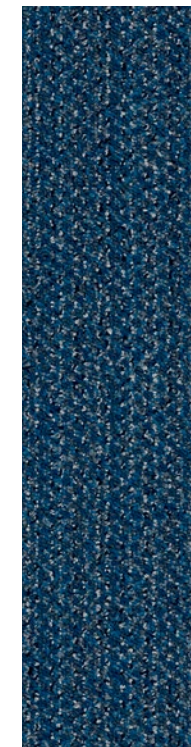
COLOR 3425  
seam



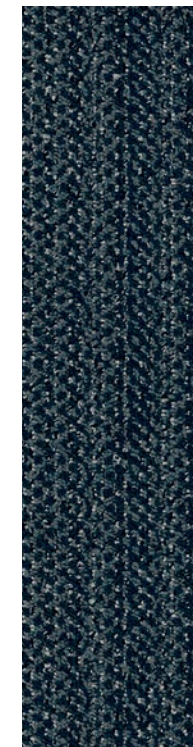
COLOR 3427  
notch



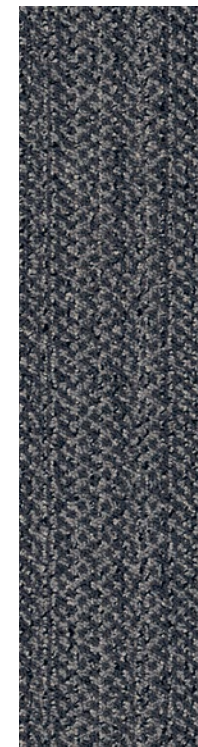
COLOR 3428  
sleeve



**QUICK SHIP**  
COLOR 3429  
garment



COLOR 3430  
fitting



**QUICK SHIP**  
COLOR 3431  
suit

JACK // NOTCH // ashlar  
[back cover] JACK // FACING // herringbone



FIBER

**Encore® SD Ultima® Nylon** (with recycled content) is specifically engineered to maximize appearance retention with exceptional color, performance, sustainability and practicality.

BACKINGS

**Nexus® Modular** products can be installed in a variety of ways and are performance engineered to be visually appealing. In addition, they are designed to accommodate your long-term flooring budget.

- » Manufactured in an ISO 14001 certified facility
- » Contains pre-consumer recycled content and contributes to LEED
- » Recyclable through the J+J Flooring’s R4 Carpet Reclamation Program

ADHESIVE

**Commercialon® Premium Modular Adhesive**

A high strength acrylic latex-based carpet adhesive specifically formulated for bonding modular PVC backed carpet to the floor. This premium adhesive is for use with all Nexus Modular Tile products. This adhesive is guaranteed for the lifetime of the installation when used in accordance with the J+J Flooring installation instructions. Commercialon® Premium Modular Adhesive meets the CRI Low-VOC Emission Criteria, CRI ID# PSA-425402. Commercialon® Premium Modular Adhesive is non toxic, has ultra-low odor and is antimicrobial in the dry state.

OPTIONAL:

**Commercialon® High Moisture Adhesive**

**TileTabs** - High Tack Adhesive Tabs (modular only)

MOISTURE

Are high levels of moisture in your concrete slab causing issues with your project’s floor covering? We can help.

- » Nexus® Modular Carpet with TileTabs – 99% RH
- » Cost-efficient
- » Long-term performance
- » Straightforward, easy-to-understand warranty
- » Requires no special floor preparation

TECHNOLOGIES

**ProTex® Anti-Soil Treatment**

ProTex is a proprietary anti-soil treatment technology that is applied and bonded to the pile fiber to impede soiling and to improve cleanability. It is standard on all J+J Flooring products.

OPTIONAL:

**ProSept® Antimicrobial**

**Sentir® Advanced Odor-Blocking Technology**

STYLE

jack 7914 modular

CONSTRUCTION

level loop

FIBER TYPE

100% Encore® SD Ultima® Nylon

DYE METHOD

solution dyed

OUNCE WEIGHT

18.0 oz./sy (610 grams/m²)

GAUGE

1/10 (3.94 rows/cm)

BACKING

Nexus® modular

SIZE

12” x 48” (30.5 cm x 122.0 cm)

PATTERN REPEAT

n/a

TOTAL THICKNESS  
(nominal average)

0.22 inches (0.56 cm)

SPECIAL TECHNOLOGY

ProTex® anti-soil treatment

OPTIONAL SPECIAL TECHNOLOGIES

ProSept® antimicrobial  
Sentir® advanced odor blocking treatment

PHYSICAL TESTING

flooring radiant panel (class 1)  
pill test – (passes)  
smoke density  
(less than 450 flaming)  
static generation – (less than 3.5 kv)  
ADA compliance  
(compliant for accessible routes)

FIBER WARRANTY

lifetime fiber performance for wear  
lifetime fiber performance for static  
lifetime stain removal  
lifetime colorfastness to light and atmospheric contaminants

BACKING WARRANTY

lifetime for tuft bind strength (edge ravel, yarn pulls, zippering)  
lifetime against delamination  
lifetime dimensional stability

MODULAR  
INSTALLATION  
METHODS



ashlar



basketweave



herringbone



parquet

STRAIGHT-FORWARD WARRANTIES					
Warranty: Installed with TileTabs	Warranty: Installed with Commercialon® Premium Adhesive and Commercialon® High Moisture Adhesive (non-prorated)	Warranty: Installed with any other adhesive	Max RH, pH: Installed without Commercialon® Premium Sealer	Max RH, pH: Installed with Commercialon® Premium Sealer	Max RH, pH: Installed with Commercialon® High Moisture Adhesive
Lifetime	Lifetime	1 Year	90% RH, pH 9	99% RH, pH 11 (TileTabs)  97% RH, pH 11 (Commercialon® Adhesive)	99% RH, pH12

©2023 J+J Flooring Group, LLC - This unique design is protected under the U.S. Copyright Act of 1976. Any unauthorized copying or duplication of this design constitutes copyright infringement in violation of federal law. Due to the unique visual characteristics of modular carpets, pattern repeats and pattern run-off seams may appear more noticeable than in broadloom carpets. Such visual characteristics do not constitute a manufacturing defect, and as such, should be considered when selecting modular carpet and its installation.

These photographs are representations of the installation for this modular product. Your modular installation may look different than these photos depending upon individual tile placement, lighting, and overall space layout, including furnishings. Final tile placement and the resulting visual is thus the customer’s, and not J+J Flooring’s responsibility.





MODULAR

QUICK SHIP OPTIONS



P.O. BOX 2207  
DALTON, GA 30722  
P 800 241 4586  
F 706 275 4433  
JJFLOORING.COM  
MX3522M03

carpet | lvt | kinetex



**FLOORING**  
A DIVISION OF ENGINEERED FLOORS