

kinetex

24" x 24" MODULAR

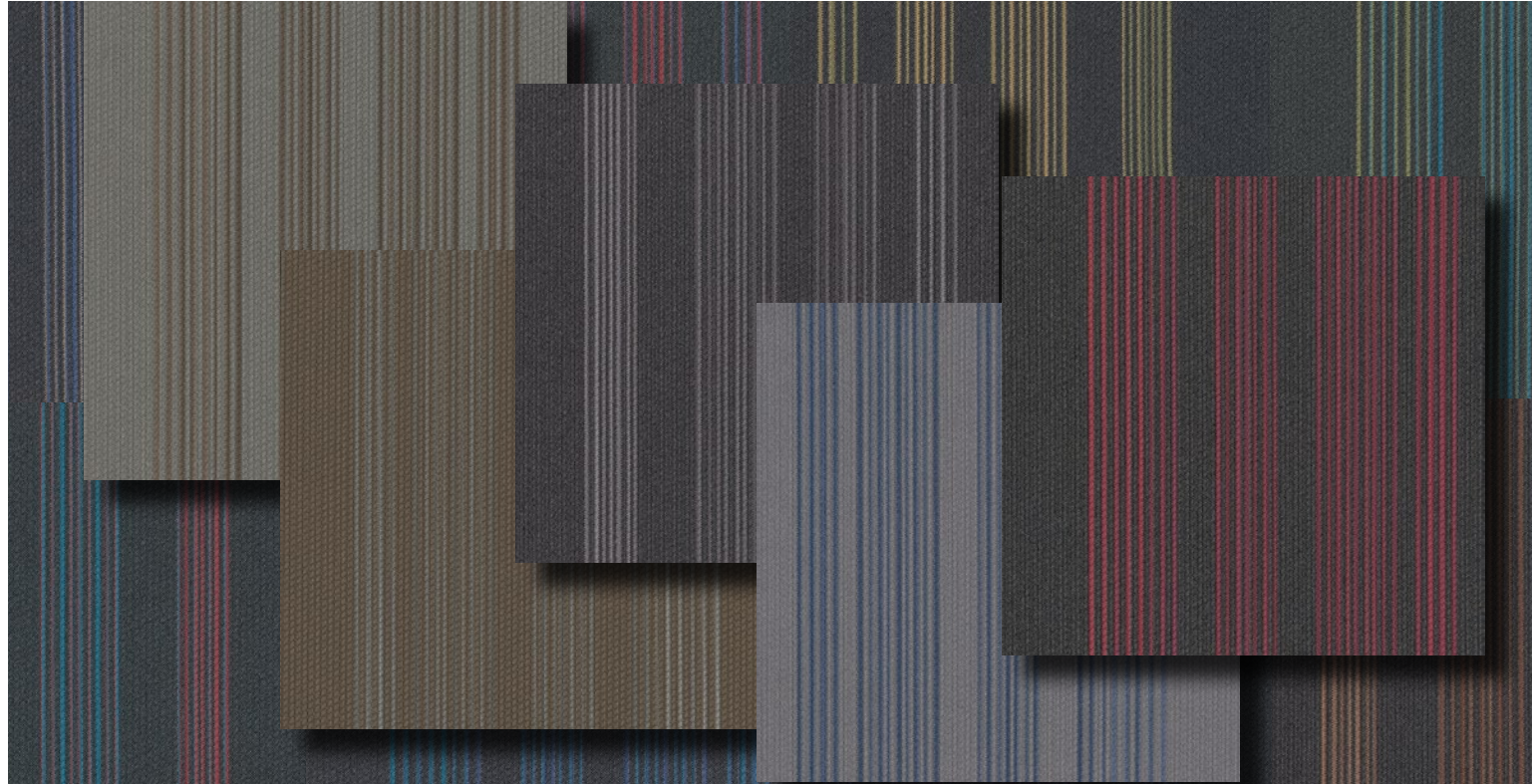
# Boom Velocity



FLOORING



# Boom Velocity



## INSPIRATION

Bursting with bold, vibrant color, Boom and Velocity shatter the notion of conventional floor coverings with their unparalleled range of performance attributes and functional, modern design. Conceptually distinct, Boom and Velocity make a dynamic statement alone - or play up the intensity by pairing them with one or more vivid Pop colors. Both styles are available in 24" x 24" modular tiles.



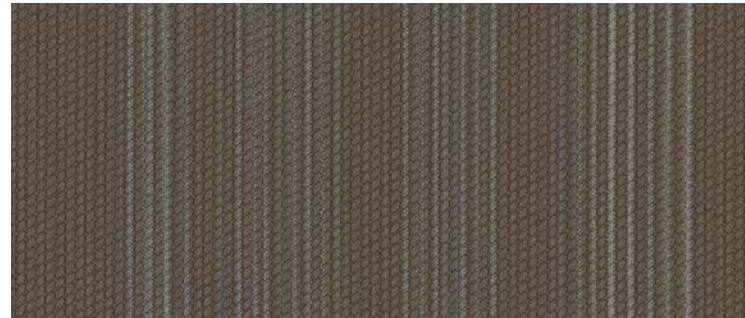
(cover) VELOCITY // MOVE // POP // ROJO, AZUL // quarter turn  
BOOM // OLD SCHOOL // POP // CIELO, VERDE // quarter turn





# Velocity

24"x24" MODULAR



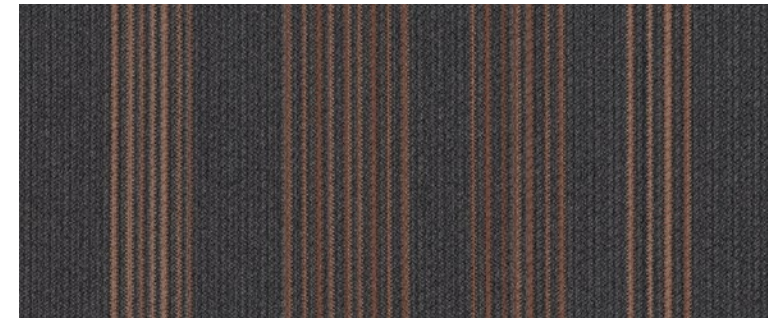
COLOR 1605  
magnitude



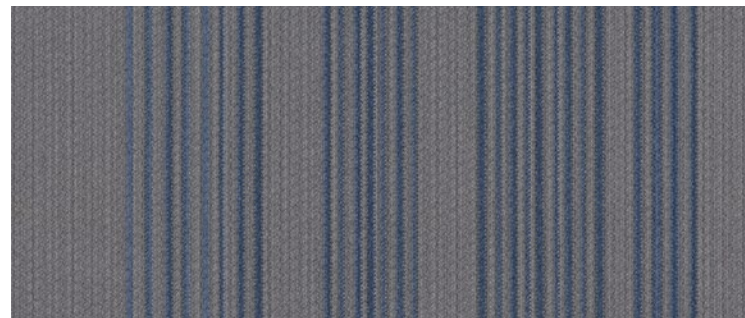
COLOR 1607  
reaction



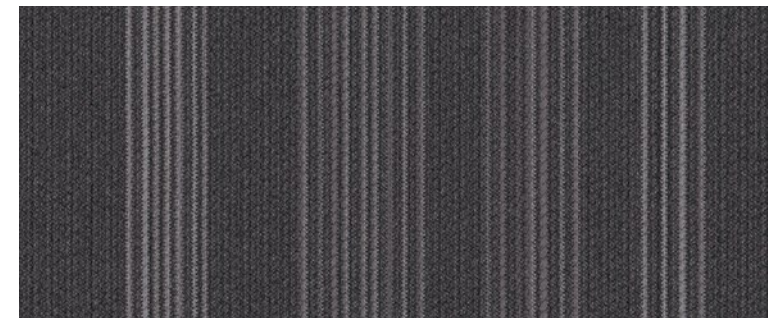
COLOR 1604  
direction



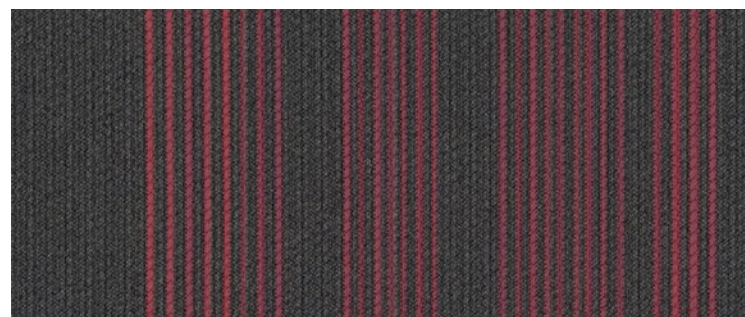
COLOR 1609  
constant



COLOR 1603  
position



COLOR 1608  
move



COLOR 1610  
vector



# Boom 24"x24" MODULAR



COLOR 1932  
throw back



COLOR 1936  
free style



COLOR 1933  
kick it



COLOR 1930  
mash up



COLOR 1931  
old school

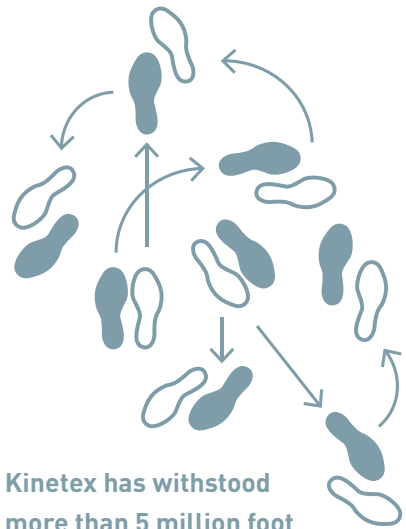


BOOM // THROW BACK // quarter turn  
(back cover) BOOM // FREE STYLE // PROPEL // OUTPACE // quarter turn



1. DURABILITY

Kinetex delivers enduring performance, year after year. One of the most thoroughly tested flooring products on the market, it has outstanding dimensional stability and unparalleled crush resistance.

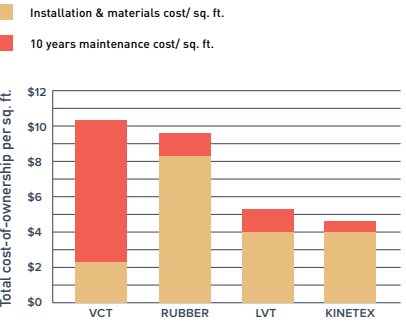


Kinetex has withstood more than 5 million foot traffic events.

2. MAINTENANCE

Tough to wear out, easy to maintain. With vacuuming and encapsulation cleaning, Kinetex looks like new, year after year. Thanks to a lightweight face construction, Kinetex retains less water than carpet and dries faster. It is easily sanitized and resists the most challenging staining agents.

Life Cycle Costs:  
INSTALLATION AND MAINTENANCE



3. MOISTURE TOLERANCE

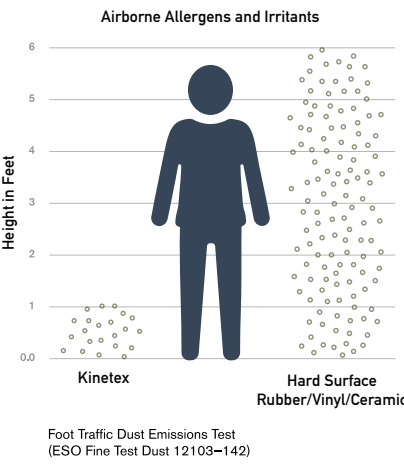
The most common subfloor, concrete, can release excessive moisture and destroy floor covering systems—unless costly precautions are taken before installation. But moisture mitigation isn't necessary with Kinetex; its breathable nature allows moisture to pass through its backing, instead of trapping it underneath. Kinetex textile composite flooring will perform in elevated RH slabs up to 100%.



4. HEALTH

Kinetex minimizes air particulates that trigger allergies and cause infection. It easily surpasses California's 01350 requirements—the most popular U.S. standard for evaluating and restricting VOC emissions indoors.

Easy Breathing

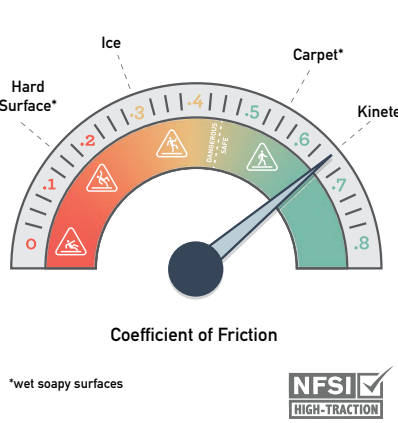


Foot Traffic Dust Emissions Test (ESO Fine Test Dust 12103–142)

5. SAFETY

Kinetex is the only wall-to-wall textile floor covering certified as High-Traction by the National Floor Safety Institute. Its innovative construction creates one of the most slip-resistant flooring surfaces ever tested—wet or dry—to prevent falls before they happen.

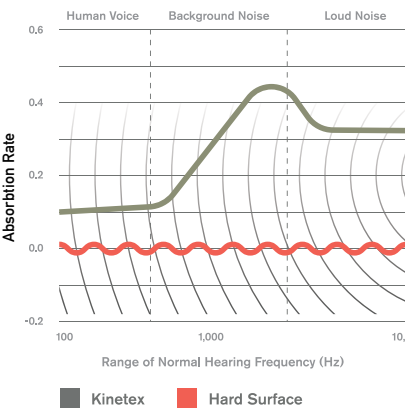
Gaining Traction



6. ACOUSTICS

Kinetex delivers unparalleled acoustic performance, with one of the highest Noise Reduction Coefficients (NRC) and Impact Insulation Classifications (IIC) ratings of any commercial flooring product.

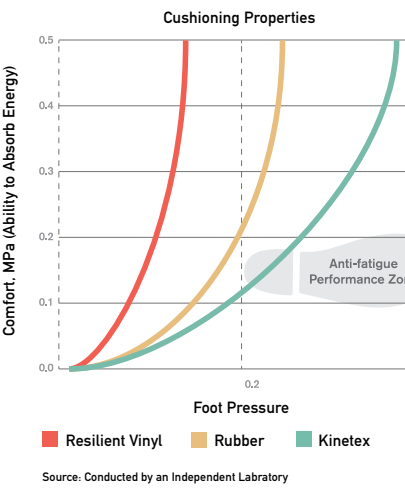
Keeping Quiet



7. COMFORT

Kinetex, a soft textile surface with a high-density backing, has exceptional anti-fatigue properties and minimal rolling resistance. Because it can absorb energy, Kinetex has the potential to reduce repetitive foot stress injuries and other injuries related to standing and frequent movement from place to place.

Step-by-Step Support

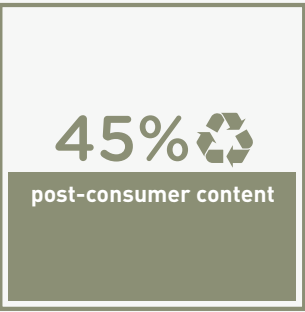


Source: Conducted by an Independent Laboratory

8. SUSTAINABILITY

Made with 45% post-consumer recycled content, each Kinetex tile contains the equivalent of 27 used water bottles. This dematerialized flooring product and its longer life mean that Kinetex has a much smaller environmental footprint than other commercial flooring options. Kinetex is NSF/ANSI-140 Platinum certified (the industry-leading standard for sustainability) and has a Red List Free DECLARE label. Furthermore, J+J Flooring has met the verification requirements for Carbon Neutral Products by purchasing offsets for 100% of its A1-A3 GWP values reported publicly in our 3rd Party Verified Environmental Production Declaration (EPD) for all annual production of Kinetex.

Second Chances



Each Kinetex tile contains the equivalent of 27 plastic water bottles.

KINETEX INSTALLATION

Installing Kinetex is as easy as traditional modular carpet, however special attention should be applied until installers gain experience with module placement. Installers should perform site and material conditioning, surface preparation, and concrete pH and moisture testing as if they were installing J+J Flooring carpet modules. Because it is such a lightweight material the modules cut very easily, reducing installation time. Kinetex uses J+J Flooring's proven adhesive systems with lifetime performance warranties.

Kinetex Adhesive

Kinetex Adhesive is formulated for Kinetex textile composite flooring products and is built to bond the textile composite to the properly prepared substrates for the life of the installation. Products with Kinetex Adhesive will perform in elevated RH slabs up to 100%.

PreFix® (optional)

PreFix includes a release liner that easily peels away to reveal pre-applied adhesive that securely anchors the Kinetex module in place. Products with PreFix will perform in elevated RH slabs up to 100%, allowing the flooring to be installed without costly moisture mitigation. PreFix offers a quick installation system and it can be added to all Kinetex products as an optional adhesive.

Please see the Kinetex installation instructions for full installation details.

WARRANTIES

We stand behind every aspect of Kinetex and extend certain lifetime warranties. Each warranty is covered for the useful life of the product, provided that installation and maintenance is in accordance with J+J Flooring’s Kinetex Installation instructions.

Wear Layer Warranties

Product Performance	Colorfastness to Light & Crocking	Stain Removal	Static Protection
Lifetime	Lifetime	Lifetime	Lifetime

Backing Warranties

Protection from Edge Ravel	Protection from Delamination Failure	Dimensional Stability
Lifetime	Lifetime	Lifetime



©2016 J+J Flooring Group, LLC - This unique design is protected under the U.S. Copyright Act of 1976. Any unauthorized copying or duplication of this design constitutes copyright infringement in violation of federal law. Due to the unique visual characteristics of modular carpets, pattern repeats and pattern run-off seams may appear more noticeable than in broadloom carpets. Such visual characteristics do not constitute a manufacturing defect, and as such, should be considered when selecting modular carpet and its installation.

These photographs are representations of the installation for this modular product. Your modular installation may look different than these photos depending upon individual tile placement, lighting, and overall space layout, including furnishings. Final tile placement and the resulting visual is thus the customer’s, and not J+J Flooring’s responsibility.

\*NRC rating is a measure of the effectiveness of a material in absorbing sound. The higher the NRC rating, the greater the ability of the flooring product to absorb airborne noise. Independent laboratory testing of Kinetex has shown an average NRC rating of 0.30 (bare concrete flooring will typically provide a NRC Rating of 0.015).

\*\*IIC is a rating of the insulation from impact noise. The higher the IIC rating, the greater the sound insulation. Independent laboratory testing of Kinetex has shown an average IIC Rating of .64 (bare concrete flooring will typically provide an IIC Rating of 34) NOTE: Test results and testing laboratory will vary, and the above information is not guaranteed.

STYLE	boom 1828 modular	velocity 1814 modular
PHYSICAL CHARACTERISTICS		
WEAR LAYER	solution dyed polyester	solution dyed polyester
BACKING	polyester felt cushion	polyester felt cushion
TOTAL WEIGHT (nominal average)	4.5 oz – 5.2 oz / square feet	4.5 oz – 5.2 oz / square feet
TOTAL THICKNESS (nominal average)	0.205 inches	0.205 inches
DIMENSIONS	24 x 24 inch modules	24 x 24 inch modules
PACKAGING	eighteen modules per box, 72 square feet	eighteen modules per box, 72 square feet
ENVIRONMENTAL ATTRIBUTES		
CARBON FOOTPRINT	carbon neutral	carbon neutral
RED LIST FREE	DECLARE label	DECLARE label
RECYCLED CONTENT	45% post consumer	45% post consumer
LEED SCORECARD	IEQ 4.1 and IEQ 4.3	IEQ 4.1 and IEQ 4.3
NSF/ANSI 140 CERTIFICATION	platinum	platinum
TESTING		
FLOORING RADIANT PANEL	class 1	class 1
SMOKE DENSITY	less than 450 (flaming & non-flaming)	less than 450 (flaming & non-flaming)
ELECTROSTATIC PROPENSITY	less than 3.0 kv	less than 3.0 kv
COLORFASTNESS TO LIGHT	rating of 4.0 or greater	rating of 4.0 or greater
COLORFASTNESS TO CROCKING	rating of 4.0 or greater	rating of 4.0 or greater
WATER REPELLENCY	rating of 4.0 or greater	rating of 4.0 or greater
APPEARANCE RETENTION	4.0 or greater	4.0 or greater
SLIP RESISTANCE	Complies with ADA Guidelines for level surface NFSI Certified High-Traction	Complies with ADA Guidelines for level surface NFSI Certified High-Traction
THERMAL INSULATION	0.73	0.73
NOISE REDUCTION COEFFICIENT	NRC Rating: 0.30*	NRC Rating: 0.30*
IMPACT INSULATION CLASSIFICATION	IIC Rating: 64**	IIC Rating: 64**
STAIN RESISTANCE	resists most challenging stains	resists most challenging stains
INDOOR AIR QUALITY CERTIFICATION	CRI Green Label Plus™	CRI Green Label Plus™

ADHESIVE	Kinetex Adhesive (optional) PreFix® pre-applied releasable adhesive	Kinetex Adhesive (optional) PreFix® pre-applied releasable adhesive
----------	---	---

INSTALLATION METHODS	<div><div>↑→</div><div>←↓</div></div> <div>1/4 turn</div>	<div><div>↑→</div><div>←↓</div></div> <div>1/4 turn</div>
----------------------	---	---

kinetex

24" x 24" MODULAR



P.O. BOX 2207

DALTON, GA 30722

P 800 241 4586

F 706 275 4433

JJFLOORING.COM

AX7123M04

carpet | lvt | kinetex



**FLOORING**  
A DIVISION OF ENGINEERED FLOORS